

# THE MERIDIAN SWAVESEY



No. 191 August/September 2021



# Welcome to Swavesey

Community information

Spring 2021



## EDITORIAL

What has happened to summer? maybe by the time this issue hits your letterbox we will have it back! and maybe we will have the freedom to enjoy it too.

If we have a grey day- or more- there is plenty in this issue to read and enjoy. Our series on "where I grew up "is still proving popular and the look back at the shops we used to have shows how limited our choices are now - shop local they say- yes well first we need the shops to shop local in!

One local "shop" is the popular sale of fruit and vegetables by the allotment holders at the start of September, if you missed the one on 24th July then try to go to this one, and do not forget Rosegate Farm for meat and eggs I am told their sausages are legendary!

The issue of street parking is one that regularly crops up and seems to be getting more of a problem. Please think before you park, some of our side roads have no pavements so pedestrians have to walk in the road to get by, not good if you have limited mobility or a young child. It is also causing residents problems driving their vehicles in and out of driveways - so think before you park - emergency services need access to properties in case of fire, accident, illness.

Have a good summer wherever you spend it.  
Deadline for the October/ issue is **20 August!**

Editor

Cover Image - Goldfinch by Edwin Parish  
Inside Front Cover - Parish Council - Welcome Leaflet  
Inside Back Cover - Library Opening Details  
Back Cover - RADSOC Audition poster

### IN THIS ISSUE ...

Editorial	page 1
Meridian Committee	page 2
Major Events List	page 2
Dates for your diary and forthcoming events	page 3
Club Reports	page 4-13
Miscellany	page 14-24
Medical News	page 25
School Information	page 26-31
Parish and County news	page 32-36
Churches	page 37-41
Community Groups & Charities table	page 42
Club Information	page 43-45
Advertiser	page 46-70
Extra Magazines, Major Events & Birthday forms	page 71
Useful Telephone Numbers	page 72

## MERIDIAN COMMITTEE

Editor:	April Martin	Tel: 01954 200533
Treasurer	David Gedny	Tel: 01954 231305
Production:	Alan Morris	Tel: 01954 202664
Advertising:	David Gedny/Selwyn Richardson	Tel: 01954 231305 / 07902 240061
Distribution	Selwyn Richardson	Tel: 01954 202974
Subscriptions	Jan Waller	Tel: 01954 230795
Complaints	Maureen Hadfield	Tel: 01954 230414
Proofreading	Alison Lucas	Tel: 01954 232984
Website:	Alan Morris <a href="http://www.swaveseymeridian.org.uk">www.swaveseymeridian.org.uk</a>	Tel: 01954 202664
Emails:	<a href="mailto:editor@swaveseymeridian.org.uk">editor@swaveseymeridian.org.uk</a>	
	<a href="mailto:adverts@swaveseymeridian.org.uk">adverts@swaveseymeridian.org.uk</a>	
	<a href="mailto:webmaster@swaveseymeridian.org.uk">webmaster@swaveseymeridian.org.uk</a>	

### Major Events List

This list is intended to avoid major events clashing on the same day. It will only work if we are advised of all such events, so please let us know as soon as you can confirm the details.

A form is available at the back of this magazine. We will list them in this section of the Magazine and also on our website at [www.swaveseymeridian.org.uk](http://www.swaveseymeridian.org.uk)

Sunday 1 August	Over Day Centre	5 Pub Challenge - 10 am start from the Over Day Centre
-----------------	-----------------	--

**Sorry!**  
**Bin dates were incorrect in the last issue.**  
**I must proof read more carefully!**  
**Ed**

## 1 DATES FOR YOUR DIARY 1

August		
Sunday 1	Over Day Centre	5 Pub Challenge - 10 am start from the Over Day Centre
Thursday 5	Refuse Collection	Black Bin Collection
Thursday 12	Refuse Collection	Green & Blue Bins
Thursday 19	Refuse Collection	Black Bin Collection
Thursday 26	Refuse Collection	Green & Blue Bins
September		
Friday 3	Refuse Collection	Black Bin Collection (NOTE FRIDAY)
Thursday 9	Refuse Collection	Green & Blue Bins
Thursday 16	Refuse Collection	Black Bin Collection
Thursday 23	Refuse Collection	Green & Blue Bins
Thursday 30	Refuse Collection	Black Bin Collection



## REED KITCHENS & BATHROOMS

DESIGN TO INSTALLATION  
THE COMPLETE SERVICE

We are a local established company since 1994 that manufactures a range of top quality kitchens and offers them direct to you, at an upfront price that includes everything from design to full installation. It also includes your choice of top range appliances from the likes of NEFF and Bosch.

Makeover your kitchen using our door and worktop replacement service.

Call for a free Brochure






COMPUTER AIDED DESIGN SERVICE



DOMESTIC INSTALLER



www.kbbi.org.uk  
Institution of Kitchen, Bathroom & Bedroom Installers

Tel: 01954 232899    Mobile: 07711 696015

For more details visit: [www.kitchenscambridge.com](http://www.kitchenscambridge.com)  
email: [glenn@kitchenscambridge.com](mailto:glenn@kitchenscambridge.com)



KITCHENS



BATHROOMS



BEDROOMS

# CLUB REPORTS

## Swavesey Spartans

With a lot of hard work from Cambs FA, the committee and Coaches all Spartan's teams managed to complete the 2020/21 season. It was very stop and start but with matches continuing into late June the leagues completed and we managed to get all games played. Thanks go out to Swavesey Village College and Swavesey Parish Council for allowing us to play on the College pitches and Village Recreation green.

Hopefully by the time you read this we will have had Spartan's Day in some shape or form and we will be preparing for the 2021/22 season with more teams than ever.

## Wildcats

We are proud to announce that we are hosting Wildcats which makes football available for 4-11 year old girls. We are hosting these sessions free of charge to give local girls the opportunity to try football, make new friends and keep fit.

For more information please contact: [wildcats@swavesey Spartans.co.uk](mailto:wildcats@swavesey Spartans.co.uk)

## Walking football

At Swavesey Spartans we want to make football available to everyone and are supporting Walking Football within the Club. Walking football is available to anyone over 45 with training on Wednesdays at Swavesey Village College, 19.30 - 20.30. Cost is £5 per session. There is a good friendly group playing already but new players are more than welcome.

Contact Jerry Ladell: **07858 254003**

## Call for players and coaches

If you have a child looking to play football and would like to join Swavesey Spartans please contact [swavesey.secretary@gmail.com](mailto:swavesey.secretary@gmail.com)

We are looking for players for all teams:

**U6-U18 Boys Teams**

**U8 - U17 Girls Teams**

**Swavesey Spartans Ladies**

Are you looking to help children from Swavesey and surrounding villages keep fit, play football and make new friends? We are looking for coaches to help develop new and present teams. As a club we will pay for all training to attain your Level 1 coaching Certificate.

I would like to finish off by saying thank you to all of the Swavesey Committee, without you we would not have a club. Your dedication and devotion to keeping the club not only going but expanding is fantastic so thank you all. Another thank you to all the coaches for your time and effort in keeping so many young players playing football and to the players and parents for pitching in, week in, week out in all weathers.

Fingers crossed the 2021/22 season will be a safe and more 'normal season' for us all

Swavesey Chairperson

## ALAN'S CARPETS

**Carpets and Vinyl  
Supplied and Fitted**

We have been in the carpet trade  
for over 47 Years!

Samples To Your Home

Measure

Quote

Express delivery & fitting included

Phone 07790 681317

or

07790 544250

## CHIMNEY SWEEP

**J. L. Wight**

**City & Guilds Qualified**

**Advice given /  
Problems solved**



**Certificates issued**

**Fully Insured**



**HETAS registered**

**01954 253315**

**www.camsweep.co.uk**

26 Cow Lane, Rampton

## What *will* happen to your family and estate after you die?

Assist Law has over 50 years' experience in  
delivering high quality legal services.

Services very popular with our clients:

- Estate planning review: What *will* be left?
- Mitigating the cost of care fees
- Mitigating against Inheritance Tax
- Lasting Power of Attorney to protect vulnerable family members

For a no-obligation conversation, contact

Estate Planner, Ed Bristow

Telephone or text: 07786061457

or email: [edwinbristow@assistlaw.co.uk](mailto:edwinbristow@assistlaw.co.uk)



**Assist  
Law**



**Limited  
SPECIAL OFFER:  
£79 per Will  
Normally £135!**

## R. A. Miller

**Plumbing and Domestic Heating**

Fenside, 71 Willingham Road, Over  
Cambridge CB24 5PE

Tel: 01954 203277 Mob: 07831 853885

Email: [robert.miller@ntlworld.com](mailto:robert.miller@ntlworld.com)

**All plumbing work undertaken**

- » New boiler replacement and installation with free quotation.
- » GAS boiler and GAS fire servicing  
Landlord Certificates.
- » Heating problems - Diagnosis  
and rectification.
- » General plumbing - taps, washers,  
pipework, showers, etc.
- » Full and partial Bathroom installation work.

For a reliable and professional service

Robert Miller MCIPHE RP



Office 01954 203 277  
Mobile 07831 853 885



# FDS

(CAMBRIDGE) LTD

01353 779754

fdssales@outlook.com

www.fds.cambridgeltd.co.uk



GRAB/TIPPER HIRE



AGGREGATE SUPPLIES



PLANT HIRE

PRIVATE AND TRADE WELCOME

**SOILS – SANDS – GRAVELS – SLEEPERS**

**HARDCORE – DIGGERS – DUMPERS**

**DOZERS - FORKLIFTS**

**CALL US ON 01351 779754 or 07921 777550**



FDS Cambridge LTD



fds\_grabhire

## FACE TO FACE ???

We have reached the end of our 20/21 Programme and, surprisingly, in spite of the lockdown, or maybe because of it, we have had a super-successful year. We have paired up with clubs from Yorkshire to Canada, been judged by someone at home in Northern Ireland, booked talks from well-known photographers, far beyond our normal modest budget because their travel expenses would have been prohibitive, all thanks to good old Zoom.

Many of these lecturers showed us new, creative styles of photography; several of our members, with strictly limited opportunities to access their usual favourite subjects, tried these out with great success. Our entries for external competitions benefited greatly as a result. This was an answer to the eternal challenge of what is new to photograph when confined to ones own home for weeks on end. Answer: an enormous amount.

One might think that club meetings on Zoom would be formal, cold and boring. Not a bit of it. Maybe it was the apparent closeness, everyone's faces filling the screens as if we were all sitting side by side. Feels like now we all know each other far better than before. At break time the group conversation took off in many strange directions, sometimes on the weirdest topics, most entertaining for those of us in isolation.

While in Zoom mode we have been joined by some really excellent photographers. They are very active in all club activities, and it feels as if they have been our friends for years: so difficult to remember that, as yet, not one of us has actually met any of them face to face. This really sank in when we had the "Image of the Year". This is when we are shown again every winning image from all the year's competitions, and the members have to decide which is the very best of all, a most difficult thing to do. This will be used to promote our club on website, membership cards, etc. for the coming year The winner was "Three Musketeers", a charming photograph of three small boys marching past the Louvre. It was much later that we realised that our Club Profile is to be promoted by an image sent in by our lovely Rose, and we hope to meet her for the very first time at our Barbecue in Simon's garden on August 14<sup>th</sup>. (Covid restrictions over completely by then, fingers crossed).

A date for your diary :

9<sup>th</sup> September. SVCollege / Covid/ Boris et al willing, we hope to have our first meeting of the year

BUT if not we shall start again on Zoom. It has worked a treat so far, after all.

Keep your eyes on our website as usual. Visitors welcome: in person or on Zoom £4.

Mo Hadfield  
Swavesey Camera Club

[www.swaveseycameraclub.co.uk](http://www.swaveseycameraclub.co.uk)

## A very strange spring - Hale Road Allotments

An extremely dry April and one of the wettest Mays on record coupled with late frost made for an uncertain start for the season. Tender plants had to be kept protected before we were able to plant them out and early blossom on fruit trees was caught by the frosts. One of the casualties seems to have been figs and by the end of May the foliage was way behind May 2020 which was quite warm. Last year the crop was excellent but I'm not expecting the same this year.

However not all plants have suffered, some have benefited from the wet spring. The raspberry crop looks to be plentiful, apparently they like wet feet as I was told by a long time local that the saying in this area is they should be picked wearing wellies. I started picking by mid June along with the outdoor strawberries.

Also benefitting from the wet May were radishes and by the end of the month I was pulling up some tasty and tender roots. I started helping my father on his allotment over 60 years ago and he always said if you can't grow radishes give up gardening. Well dad, I've passed that criteria again this year so I can carry on. He also introduced me to the variety French Breakfast and although I've tried other varieties over the years I've always returned back to them. The problem though, was as soon as we had that dry hot spell at the beginning of June the remaining plants bolted, fortunately there weren't many left and the successive sowings are developing nicely.

Potatoes were also swelling, thanks to the rain, and by mid June I was digging a plentiful supply of small egg sized potatoes. Home grown new potatoes are like no others you can buy and one of the main reasons I have an allotment.

Now the weather has warmed up the summer crops are growing quickly, tomatoes, beans and sweetcorn look like they'll be in abundance for our first produce sale on July 24<sup>th</sup>. By the time you read this it will have been and gone so I hope it was successful, especially as we were joined by the library, selling books and the WI, selling cakes. If you missed that one we are holding a second produce sale on Saturday 4<sup>th</sup> September when a different range of produce should be available as the like of squashes and apples ripen.

Within the last couple of months two plot holders had to give up as they couldn't commit the time and we appreciate that people's circumstances change but it means that we were able to offer the plots to the next on the waiting list. This list keeps ticking over so get your name down now if you are interested in starting a very enjoyable, recreational and rewarding pastime

Russell

Chairman



## Swavesey Community Orchard

The orchard has recovered without mishap from the winter flooding and following a fine blossom display from the trees we have recently been treated to a wonderful display of meadow buttercups. Most of the newly planted trees, including the new cordon of apples and pears have been successfully established and are being watered on a regular basis. A further batch of hedging plants were planted in March. Paths will be mowed regularly through the summer, but the general vegetation will be allowed to grow on naturally until September.

Two benches have been installed: one providing a view across the orchard and the other, one of the best views in the village, towards St Andrew's Church.

We have had a successful start to our **Friends of Swavesey Community Orchard** with several donations which will be used to support the development of the orchard. One specific donation is for a picnic bench which should, hopefully, have been installed, by the time you read this. A notice board, individual tree name tags and replacement trees have also been sponsored.

If you would like to contribute to **Friends of Swavesey Community Orchard**, please contact Dave Mottram (Treasurer) at [swavco.treasurer@gmail.com](mailto:swavco.treasurer@gmail.com) for details.

We are still planning, and discussing with potential sponsors and grant providers, the development of a pond, hibernacula, and wetland and to make a new, safer access to the orchard.

Short term notices for jobs to be done and help needed will be placed on the SCO Facebook page, on Swavesey Life and the orchard page on the village parish council web site.

Our AGM has been postponed to 18 October – more details nearer the time.

Glyn Jones :07977 907622: [swavco.chairman@gmail.com](mailto:swavco.chairman@gmail.com)



Visit our truly stunning display gardens ...



**Probably the largest display centre in the UK, selling directly to trade and the general public**

Bannold are one of the UK's largest independent suppliers of natural hard landscaping materials. We stock natural products sourced directly from the UK and around the world enabling Bannold to offer premium products at the most competitive rates to trade and the general public.

- Natural Paving • Setts and Paviours • Stone Walling
- Decorative Gravels • Rockery • Boulders • Waterfeatures
- Topsoils • Soil Improvers • Bark Mulches • Sands
- Hardcores and Cements



Freephone: 0500 012231  
or 01954 231666

Capability Barns  
Huntingdon Road  
Fen Drayton  
Cambridge CB24 4SD

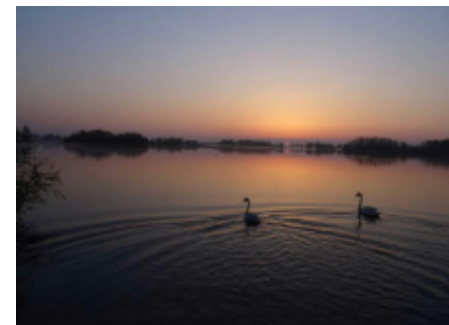
Opening Times:  
Mon-Fri 07.30 till 5.00  
Saturdays 09.00 till 1.00

**www.bannold.co.uk**



## An update from Fen Drayton Lakes

The UK is in a nature crisis with over 40% of all species suffering declines since the 1970s. In fact, many of these species are now threatened with extinction and for some it is already too late. With over 70% of land in the UK being used for agriculture, nature reserves, such as Fen Drayton Lakes, are of vital importance to halt and reverse these declines by offering safe havens for species of all kinds.



Sunrise over Ferry Lagoon - Simon Freedman

The primary purpose of a nature reserve is to provide habitat for wildlife. By a combination of non-intervention and by carrying out targeted management work in different habitats around the reserve, from open water and reedbed to scrub and woodland, we work to ensure that there is space for plants and creatures of all sizes to breed, feed and over-winter. To date, almost 1700 different species of organism have been recorded at Fen Drayton Lakes and there will be many more (particularly invertebrates) that have not been formally identified and recorded.

Of course, nature reserves are not just wonderful for wildlife; nature reserves and the countryside in general are special spaces for us all to get closer to nature, to relax and to forget, for a short time, the troubles affecting us all.

Unfortunately, where there are people there is disturbance to wildlife and so it behoves all visitors to minimise their impact and respect the countryside code when visiting the reserve. Disturbing nesting birds and other breeding wildlife can have significant consequences with nests or young being abandoned.

We know that the water is very inviting, but swimming and boating are not allowed on the lakes as these both cause significant disturbance. Fires and barbecues are also

prohibited because of the damage they can cause.

Wonderful, open meadows, which often look empty, host numerous nesting birds and other life like deer fawns hidden away amongst the vegetation. Allowing dogs into these areas can seriously harm the wildlife using them, and in some cases, constitutes a criminal offence under the Wildlife and Countryside Act.

Like elsewhere, we have seen a significant increase in these types of antisocial behaviour over the past year, with the increase in littering that comes with them. We would be really grateful if everybody could help by ensuring that those around you are aware of the harm these activities can cause to our wonderful nature reserve, and, to please discourage such behaviour where you can exert influence in your section of our community.

We thank you for your cooperation and hope you continue to enjoy your visits to Fen Drayton Lakes.

Email: [fendraytonlakes@rspb.org.uk](mailto:fendraytonlakes@rspb.org.uk)

Phone: 01954 233260

Visit [rspb.org.uk/fendraytonlakes](http://rspb.org.uk/fendraytonlakes)

The Royal Society for the Protection of Birds (RSPB) is a registered charity: England and Wales no. 207076, Scotland no. SC037654

## Ghost of the Trinity Foot' by Sue Hazel.



This atmospheric pastel and chalk drawing was inspired by old photographs when the landmark public house was long derelict and ghostly. Standing at the junction of Boxworth End and the A14, (formally the A604 dual carriageway), it was demolished in 2017 to make way for the A14 improvement scheme.

Built in the 1840s, it was originally known as The New Inn. It's only water supply came from an outside pump and wooden shutters on the lower windows provided security at night. In 1925 when it became part of Greene King, the stables were converted to a garage with petrol pump. As on duty policemen were not permitted to visit public houses, the landlord regularly left a bottle of beer by the pump for collection. During the Second World War, families sat outside to watch convoys of tanks and army lorries roll past.

In the 1960s, the pub was sold to Whitbread. Renamed the Trinity Foot, it was completely renovated and an extension built at the east end. Before it closed in 2008, many will have enjoyed a meal in its restaurant.



For more pictures by local artists, visit:  
[artime-over.webador.co.uk](http://artime-over.webador.co.uk)

## Artime Exhibition



Saturday 21st August 2.00 - 4.30pm Over Community Centre

Alongside the Over Village Produce Show, there will be an exhibition by local artists in the Seminar Room. Come along and identify the local scenes, purchase a picture or choose from a selection of greetings cards.

## Swavesey W I

It is great to be able to write in this month's Meridian magazine that Swavesey W I is thriving. We are resilient and imaginative and these two things have brought us eight new members in the last few months. Local women have been joining our safe walking groups and our coffee mornings on Market Street green, and have been getting to know us informally during lockdown. Although we haven't been able to meet in the Memorial Hall, we can still offer ways for women to meet each other. Our support for each other during this difficult time has made all the difference to our lives. See our Facebook page and notice board for up to date information on our activities.

We have held open gardens for members, a summer garden party for members and a guest, and back to hosting Compass Cafe in Bethel Baptist Church once a month. We will be hosting our first indoor meeting on September 13th, and once a month on the second Monday from then on. All women are welcome, why not come and give us a try?

For more information please contact:

Deirdre Burgess 01954 230897 or Linda Saunders 01954 201162

## Swavesey Festival 100 Club

Three winners each month receive £60 or £30 or £15.

To be added to the waiting list to take part in this popular competition phone Gill Hurst on 01954 200470.



Latest winners are:-

	£	May 2021	June 2021
<b>First prize</b>	60	Jane Stoner	Sarah Hellon
<b>Second prize</b>	30	Hannah Parish	Helen Wiesleik
<b>Third prize</b>	15	Paula Land	Brian Dye

# MISCELLANY

## Surrounded by Water – Almost Part 5. The Two Main Drains

Swavesey is the last village downstream on the river Great Ouse to be drained entirely by gravity. Beyond the parish boundary with Over, and from land all the way to The Wash at Kings Lynn, drainage water is actively pumped into the river. This puts our village in a precarious position in the local league table of flood risk.

From the recreation green, travel southwest along School Lane for just over 1 km and turn right into the former ARC minerals haul road, signposted to the RSPB nature reserve. After a straight 1 km you arrive at a sharp-left bend on a bridge over Covell's Drain. This is a main drain which forms part of our western parish boundary and it is managed and maintained by South Cambs District Council. Drainage water from fields to the northwest of the windmill in Hale Road, and from the large block of land to the west of Whitegate Close/Moat Way, travels westwards along farmer-maintained ditches to be pumped up into Covell's Drain. Additionally, as well as draining much of the arable land in the southwest of the parish, it brings in a vast amount of water from Conington and Fen Drayton along with the contents of balancing ponds beside the new A14 and on the A1307 in the southwest.

If you walk north along the footpath, which is on the left bank at first then changes to the right bank after crossing the busway then, in due course, back to the left bank over a footbridge, you eventually meet the river Great Ouse. Here you can see the ancient, crumbling remains of former sluice gates which have been derelict for decades. This means that when the water level rises in the river, the water backs up along Covell's Drain for some large distance. Most of the time the water moves very slowly, down at low level in the drain, but this can change quickly after heavy rain. Many residents can remember when the drain's eastern bank burst in 1974, flooding part of the village and again at Easter in 1998 and at the beginning of January in 2003. This year, 2021, in early January, following very heavy rain locally on 23 and 26 December, the footpath was flooded for a while as water overtopped the western bank but this was of no consequence.

Move on to another part of the village and from the busway crossing, north of St Andrew's church, travel for 0.5 km until you get to the bridge at the bottom of Over hill. Until 1839, when the first bridge was built, this had been a footpath. It was replaced by the current bridge in 1967. Underneath is Swavesey Drain which is a main drain forming part of our eastern parish boundary and for most of its length it is managed and maintained by the Environment Agency. The flow of water into the river is controlled by modern sluice gates at Webb's Hole which can be visited by travelling down Overcote Road, just after St Mary's church in Over, and parking opposite the Pike and Eel pubic house.

Swavesey Drain (SD) receives water from a very large area of land. The pumping station to the right of the bridge on Over Road lifts water from the sophisticated low-level drainage system which maintains the water table in Cow Fen sufficiently low for the production of arable crops. From as far as the A14, land drains bring water from fields in the south and southeast of the parish. Large areas of land in Boxworth and Lolworth send water under the A14 on its way to Webb's Hole via SD, along with road water from balancing ponds on the new A14 and on the A1307 in the southeast. Most of the drainage water from the residential area of the village ends up in SD, either through Turnbridge Brook which crosses High Street just north of Greenside Close, or by moving through ditches down into Cow Fen which it crosses on its way to the pumping station beside Over Road.

The 1,000-dwelling Northstowe 3b site will be built on a conspicuous block of land on the left just beyond the roundabout at the far end of Ramper Road. The source of SD is just east of Longstanton and it travels along the western edge of this large new site, all of which slopes gracefully down to SD. So, the surface water from this development, which will have nearly the same number of houses as the whole of Swavesey, will travel across Swavesey's fenland, further putting our village at risk.

The water becomes murkier in further instalments of this "Surrounded by water" series, during which it will become increasingly obvious why "Surface water, drainage and flood risk" is the headline policy in Swavesey's Neighbourhood Plan which is currently under construction.

### OVER DAY CENTRE - LOOKING FOR TRUSTEES & VOLUNTEERS

Over Day Centre is a friendly, community led charity that has been offering high quality care and social opportunities to older people living in South Cambridgeshire since 1989.

We are looking for four new Trustees to join our Board and help us to navigate future challenges. We are also keen to increase the number of volunteers to both help at the Centre, and/or join one of our four working groups (see below).

We want our Trustees reflect our diverse community with people from all backgrounds; as well as from all the villages for which we provide social care. At the moment we have clients from 6 villages – including Swavesey.

The Board of Trustees meets 6 times a year and has four working groups focused on business development, maintenance of the Centre, HR and fundraising. All our meetings are currently virtual, and, in the future, we expect to have a blended mix of face to face and virtual meetings.

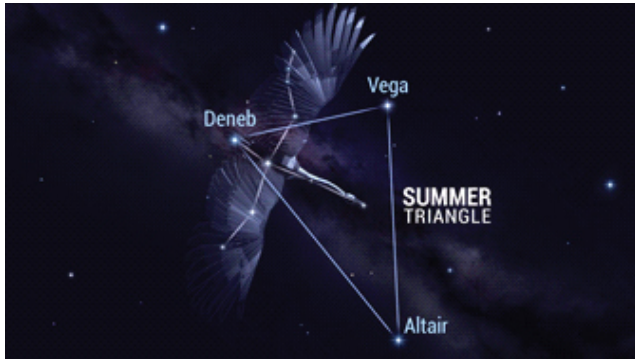
We are keen to find new trustees who can provide strategic direction, appropriate oversight, scrutiny, challenge, leadership, and passion to support the development of the Centre. Skills and expertise in business development, social care, human resources, and governance/policy would be welcome.

For further information about becoming a trustee or volunteer, please contact our Administrator, Halina Szulakowska by phone 01954 231807 or email [admin@overdaycentre.co.uk](mailto:admin@overdaycentre.co.uk). Arrangements can be made to meet with the co-chairs David Barker or Cecilia Tredget. Applications to be made by letter of support and CV.

## It Will Probably Be Cloudy...

### A guide to the night sky over Swavesey during August and September.

The summer months provide the perfect opportunity to observe the night sky, mainly because it isn't cold!



One of the main features of the summer night sky is the Summer Triangle asterism. An asterism is a simple pattern of stars, similar to a constellation. The Summer Triangle can be spotted towards the South, made up of stars Deneb, Vega and Altair that together make the shape of an upside-down triangle.

Deneb is in the constellation of Cygnus. These stars also make it easier to see the Milky Way, as it runs through the stars Deneb and Altair.

The Milky Way is easier to see during the summer as the northern hemisphere is facing the galactic centre. Under the relentless glare of the Swavesey streetlights it will appear like a thin band of cloud. Under a darker sky then you will be able to truly appreciate the depth of the star field. The Milky Way is one of two galaxies that can be seen with the naked eye – the other being Andromeda.

Another feature unique to the summer night sky are noctilucent clouds. Noctilucent literally means night shining in Latin. Noctilucent clouds are clouds of icy dust that form at very high altitude on the edge of space, around 50 miles up. Because they are so high up, noctilucent clouds are illuminated by the Sun long after it has set for us at ground level, but they do not appear every night and cannot be predicted with more than a few hours accuracy. They are usually blue or silver in colour, but sometimes orange or red. To view them, look to the north west horizon around 90 minutes to 2 hours after sunset. For the early risers, they may appear 2 hours to 90 minutes before dawn on the north east horizon.

An annual event is the peak of the spectacular Perseid meteor shower on the night of 12<sup>th</sup> August and before dawn on 13<sup>th</sup> August, where you could see up to a meteor a minute at peak and possibly even the occasional fireball. The Perseids are caused by the Earth slamming into the debris left behind by comet 109P/Swift-Tuttle in July and August every year.



They are called the Perseids because the meteors seem to originate from the constellation of Perseus. Jupiter and

Saturn will be very bright in the night sky as they both go into opposition in August. At opposition, a planet is on the opposite side of the Earth from the Sun. The planets are around the closest they get to Earth and will be visible all night. If you have a pair of binoculars, see if you can view the four largest moons of Jupiter and Saturn's largest moon, Titan. You will need a telescope to see Saturn's rings in any detail.

The full moon on 22<sup>nd</sup> August is called the Sturgeon Moon, named by North American fishing tribes since the species appeared in number during this month. It is also a Blue Moon as it is the third Full Moon in an astronomical season. The phrase 'once in a Blue Moon' might mean that something is rare. Blue Moons happen every two or three years.

The full moon on 21<sup>st</sup> September is the Harvest Moon as it is the nearest full moon to the autumnal equinox which is on 22<sup>nd</sup> September at 2:30pm. The autumnal equinox marks the end of summer and the beginning of autumn, and there are equal hours of daylight and darkness.

Again, if you have binoculars, look at the moon, particularly in the earlier phases, as the lunar terminator (the line between light and dark hemispheres on the moon) as craters are more visible due to the length of shadows.

As ever, please keep an eye out for the International Space Station (ISS) passes. The ISS returned to the evening sky in the UK from July but there were no exact dates for August viewing at the time of writing. Maybe someone will post them on the Swavesey Village Life Facebook page!

**Chris & Helen Nunn**

## Paying too much for your glasses?

### Save Money - Buy Direct!

Visit our factory shop to see our fabulous range of Discount Prescription Eyewear

- Hundreds of frames to choose from, including designer frames from Ray-Ban, Polo Ralph Lauren, Oakley, PRADA, Ted Baker and Versace
- Specialists in high and complex prescriptions
- Same-day or next-day service available\*
- Save up to 75%
- Huge range of designer sunglasses
- Full range of sports eyewear

Official stockists

\*subject to prescription and availability



**POLO**  
RALPH LAUREN



**PRADA**  
EYEWEAR

**TED BAKER**  
LONDON

**VERSACE**

We are open 9am to 5pm Monday to Friday, and 9am to 1pm Saturday



**ALL EYES**  
SPECTACLE MAKERS  
SINCE 1997

Call us

**01954 231545**

Visit our website

**www.all-eyes.co.uk**

20 Norman Way Industrial Park, Over, Cambridge CB24 5QE

SUMMIT



# LANDSCAPES

PAVING - DRIVEWAYS - BRICKWORK  
CARPENTRY - GROUNDWORKS



[www.landscapingpaving.co.uk](http://www.landscapingpaving.co.uk)  
PHONE: 01223-929394

## HOCKEYS

ESTABLISHED 1885

**Thinking of a move?** We are happy to offer you a free, no obligation valuation of your property.



Call our Cambridge office for a free valuation  
**(01223) 356054**

Call our Willingham office for a free valuation  
**(01954) 260940**

## The Over Day Centre Bike Rides return on 3<sup>rd</sup> October 2021



Kindly sponsored by  
Law & Lewis, Redmayne, Arnold & Harris, Cambridgeshire Bathrooms and the Fen Edge Community Association

With government guidance now published for easing of Covid regulations from 19<sup>th</sup> July, we are confident that we will be able to hold the Over Day Centre Bike Rides as planned, in a COVID-19 safe manner.

Willingham Wheels and Swavesey and Over Cycling Club have dusted off their bikes and invite you to do the same for the 2021 Bike Rides on Sunday 3<sup>rd</sup> October. The event will raise funds for the Over Day Centre.

This year, the rides will start at Over Day Centre and finish, with post-ride activities, at Over Community Centre with super bar, separate café area, out- or indoor seating and live music from RPM to generate a lively social event!

There will be three, fully marked routes from which to choose:

1. 50 mile 'Challenge' route - £20 Minimum donation per rider (for route, please see <https://tinyurl.com/odc-challenge>)
2. 20 mile 'Have-A-Go' route - £15 Minimum donation per rider (for route, please see <https://tinyurl.com/odc-intermediate>)
3. 8.5 mile 'Family' route - Minimum donation £10 per family (any size); £5 adult individual; £2 under-18 including medals for all children completing the course; along the busway track with a cake stop at St. Ives.

So, make a date in your calendar for Sunday 3<sup>rd</sup> October. More details including arrangements for registration will be published soon.

## NURSE TRAINING IN THE 1960s

Call the Midwife has brought me so many memories of the West End of London, the docks and dockers, narrow streets, and big coach-built prams. On 11.11.63 I started my general nurse training at St Bartholomews Hospital London EC1 but the first three months were based at Piggotts Manor in Radlett Hertfordshire. So on a cold November day we all arrived with our bags and baggage and were told to carry them up the grand staircase to our rooms and get changed into our hospital nursing uniform. We were told NO MEN were ever allowed above the ground floor so even our fathers were not allowed to help. At that time there were no male nurses except in mental nursing hospitals and neither were any married women allowed to be nurses.

Trying to put on the nursing uniform was experimental at best and retrospectively hilarious. The dress cuffs had to be stitched into place, and the collar was fitted with a collar stud. The apron was attached round the waist with a large safety pin and two smaller ones for the bib. So, if you hadn't brought cotton and a needle (essential surely nurse!) and safety pins you were rushing round looking for somebody who had had a nurse relative and knew the score. Next we had to learn how to make our caps - it took weeks for us to get the hang of it. You start with a piece of very starched materials 24 inches by 12 inches - you fold the long edge over, put it round your head and place a safety pin on one edge to secure ("remember nurses only one and a half inches of hair to be exposed") then you pleat the bulge of cap over your head so that you can secure a second safety pin to keep it in place. You are then left with triangles which should be turned upward but for most hung down your back until you learned to control them! The uniform dress was 3 inches below the knees and was completed with black stockings, black lace up shoes and a very starched belt - grey for first years.

From the moment we walked through the door we were expected to address each other as nurse(surname) whenever we were in uniform and we were expected to be in uniform every weekday.

The Manor housed all 32 of us. It was cold and draughty but fascinating. I always used the bathroom on the first floor where the bath was in the middle of a very large marbles lined room with beautiful views over the countryside - lovely to sit in the bath and watch the cows being fetched in!

Part of our training was to include punctuality, cleanliness and observation, so we had to clean the house everyday before lessons. I will never forget seeing a very posh fellow student scrubbing round the bend of the Victorian toilet and her comment! When finished we had to wash our dusters and hang them on the washing line. These dusters must be retrieved by 3pm or the nurse tutors would collect them and you got a rocket about punctuality when you collected them.

We learned to bandage arms, legs, heads and bodies, to make junket for people needing light diets and how to take temperature, pulse and respiration. How to describe sputum, measure urine, test for sugar and record observations.

We were not allowed out after 9 pm although my friend managed to find a window which could be opened in an emergency. She met her future husband who was at the local RAF station and made use of the window regularly. The rest of us had no

television but had regular gatherings in each other's shared rooms and made friends for life.

At Christmas we were taken in full uniform by coach to Barts to spend one day on the wards - oh the excitement and fear! We came back to Piggotts with tales of dragon ward sisters, gorgeous housemen and patients with strange problems.

In February we left Piggotts and 28 of us moved to St. Mary's nursing home based on the hospital site with our own single room with a bathroom down the corridor. But the rules about men above the ground floor still applied and you had to ask the Ward sister to sign a chitty to allow you to stay out after 10pm once a week.

Nursing on the wards was hard but wonderful for me. I was on men's medical and during the first 3 month my jobs included cleaning the locker tops, ( which gave you a great opportunity to chat to the patients and you were often the one they confided in about worries ) high dusting, collecting and distributing urine bottles and bedpans - measuring and recording their contents, distributing drinks and food, and helping with bed baths. In the afternoon when the Ward was closed for an hour and patients put to bed for an afternoon sleep, I was expected to get the monometal (bedpans) to shine so I could see my face in it! You learned a lot about patients' illnesses and learned to feel comfortable touching and talking to people. I loved this part of my nurse training which fulfilled all my expectations. However, it was emotionally quite hard but the fact that the whole set of trainees would meet for meals and breaks as well as living in the same accommodations meant that we could share our down time as well as successes. We were expected to work shift hours during the day duty and given 48 hours off together once a fortnight . That meant you worked from 7.30am to 1pm had the next day off and were on duty at 1pm the following day. If you got a form signed you could claim £1.25p in lieu which bed and board which just paid my train fair home. I still have my first months salary slip - 15 shillings or 75p to those who don't remember proper money. The friendships forged at that time continue today with 5 yearly reunions bringing members from all over the world, a Round Robin letter which goes to 22 of us at least twice a year and a zoom call to 6 others monthly.

If you enjoy this reminiscence I will continue the saga another time

Sue Ellington

### 50 YEARS

#### THANK YOU SWAVESEY

In August 1971 we bought our first house, a charming but rather dilapidated cottage in a village near Cambridge previously unknown to us. How lucky that turned out to be. We were told that Swavesey was the friendliest village in the district. They were right. Thank you everyone.

Mo Hadfield, and, of course, Bill, Susan and Robert.

## A stroll through Swavesey in the early 50's

Mum used to house-keep for the Barwell family, Mr. John, who was the managing director of the local family firm & his wife Sheila & their 4 children who used to live just down Boxworth End in "Sunrise", the house that was to become "Brent House" at a later date. Next door to them in what is now known as Fryers Court was a wooden store/shop owned & operated by Mr. Crouch, the late David's father, who was one of the local paraffin dealers & used to operate regular deliveries in the surrounding villages with his van. Paraffin in those days being the standard form of fuel used for household heaters prior to the supply of mains gas to the village.

I remember Mum taking me to Whitton Close to see the original "Airey" houses being built on the left hand side of the Close, as one of Dad's siblings & family had just moved in to one, apparently I asked one of the builders where the toy cupboards were going to be! These first houses were largely pre-fabricated units with external cladding as were so many of those constructed in the immediate post-war housing boom. Strangely enough during a trip to Northstowe a couple of weeks ago I saw half a dozen 3 & 1/2 storey town houses being thrown up still using pre-fabricated sections - that's progress for you!

Further down Middle Watch was Cable's general store where the Londis now is, their 2 sons Robert & Freddie went to the primary school with us a couple of years later.

Prior to the College being built towards the back end of the decade, the only buildings down Gibraltar Lane were a few farm buildings and the 4 original cottages which are still in place.

Bill Bleet's garage was operating where C & V are now and almost opposite & next to the Primary School entrance was a Police House, yes we did actually have a police presence in the village in those days - and if you misbehaved & got a clip round the ear you didn't tell Mum or Dad or you would probably get another before they asked what you had done to deserve it!, happy days though. The Primary school is in the same location though vastly different to the current buildings and we still had the original national school on the corner of the High Street & School lane.

What is now Turnbridge Court was the main entrance to the Barwell's engineering works with the rubber works division being accessed via what is now the entrance to Chantry Close off of Black Horse Lane. In the years to come there was I believe at least 3 large flag poles by the engineering entrance from which the Company would fly its Queen's Award to Industry flags. Mr John had amongst a few other items invented & fabricated a rubber extrusion

unit which enabled mass production of re-moulded tyres of all sizes. At it's peak I was led to believe they employed in excess of 300 people at the Swavesey works and had a depot in Cambridge located on the East Rd. and Elizabeth bridge roundabout junction and another in Ohio in America.

The building which until fairly recently housed "Foxglove" was also a general store & shop operated by the Canhams as I remember it & just a couple of doors up the High Street was John Parish's butchers shop, almost opposite what was then "The Rising Sun" public house. Almost opposite "The Sun" was a small cobblers unit where we could get our shoes fixed & new soles & heels by Mr George Fenn.

Next along the High Street is the Memorial Hall though in the time it hadn't been extended to the side or rear of the building but it did have the snooker table upstairs and I can remember a stage with a piano on it as, in the day, it was the only social hub in the village. Along side the then entrance was another butchers shop operated by the Hepher family, and lo & behold on the other side of the road almost opposite Wallmans Lane was another village butchers operated by Dennis Spolton.

Alongside Wallman's and what is now the B&B was another general store operated by the Alsop family and next door to this at no: 13 was the villages second bakery operated by Mr Doug Isgrove. The Post Office in those days was located in no: 8 High Street and the Postmaster was Mr. Alan Lee ably assisted by his wife Joyce who, co-incidentally, shared the same wedding day as my parents in the Swavesey Church.

Just round the corner at the top of Taylors Lane was the villages 4th butchers shop which was operated by a Mr. George Duffield who delivered his produce around many of the local villages as did most of retail outlets in the village. Considering so many products were the subject of "rationing" which didn't end for everything until the mid 50's I guess the residents of our village didn't do too badly, there was certainly plenty of choice!

Down the south side of Taylors lane where the block of flats now stands was a large warehouse operated by a company called Austin Coe which gathered fruit and vegetables along with flower products and delivered it either to the markets or the local railway marshalling yards for more of a national distribution. The shop at the top of the lane which was until recently the carpet store, was occupied by Brian Hepher as his original outlet for his radio & television rental business which was the predecessor of Hepher's Electrical Business, prior to him moving & becoming established on The Broadway in St.Ives. Brian & his family at the time lived in one of the what was then new houses at the top of School Lane.

The stroll down to the Church passes the vicarage which in the day was occupied by the Parish Vicar who was at the time the Reverend Franklin, passing the church we come to the railway line with the signal box to the left on what is now Robert Smarts land, the stationmasters house, booking office & waiting rooms were all on the site of what is now the MG owners club. There was also a small marshalling area of I believe 3 shortish lines for loading the fruit, veg & flowers etc for wider distribution.

Coming back into the village we pass the Manor House, one of the villages historic buildings, which was then the home, surgery & dispensary for Dr. Ford & his family. Just past the entrance to Chequers Court is the long unoccupied house that was the entrance to Mr John Mitham's wooden outbuildings which also in those times contained a chapel of rest as amongst many other talents John was the local undertaker for the village.

The multi use building at no: 2 Station Road was in the day yet another general & hardware store selling paraffin & fuel by a pump and was run by a Mr & Mrs Clark.

There was a barbers run by a Mr. Dunthorne who ran his business from the upper part of what is now the lounge area of the White Horse Pub prior to the revamp in the very early 90's. I have a lasting memory of sitting in there with my Mum and someone opened the door and said "the King has died", must have been just before my 4th birthday, funny how certain things vividly stick in your mind. The pub obviously occupied the same place at the head of Market Street which it has done since since the mid 17th century. The building next door was also a newsagents & store as it is now and I believe run by a Mr & Mrs Day.

Just across the road Century House was the headquarters of the Prime Godfreys transport company who had a substantial fleet of trucks shipping goods around the country, their main vehicular operation was to the rear of the building accessed by Wallman's Lane and most of the trucks were parked up on the land that is now the memorial Hall car park. Amazing to think of what were then heavy duty lorries entering & exiting the High Street by Wallman's Lane but it worked - the trucks obviously weren't the same size as today but were still plenty big enough.

At the top of the Market Street Green was a substantial pond which was what was left of the old Saxon in-land port basin, this pond was filled in sometime I believe in the very early 70's after some cattle had become trapped in it. Down the bottom of Market Street we have the Grange, now a large office building and amongst others the local HQ for the RSPB, but in the immediate post war period and well into the 50's if not the 60's was a children's home.

### Doctors Surgeries

<p><b>Swavesey Surgery</b> (01954) 230202 Out of hours 111 Website:- <a href="http://www.swavesey surgery.nhs.uk">www.swavesey surgery.nhs.uk</a> Information &amp; updates on facebook page</p> <p><b>Over Surgery</b> (01954) 231550 Out of hours 111 Website:- <a href="http://www.oversurgery.nhs.uk">www.oversurgery.nhs.uk</a> Information &amp; updates on facebook page</p> <p><b>Longstanton</b> (01954) 207600 Out of hours 111 Website:- <a href="http://www.willinghammedicalpractice.nhs.uk">www.willinghammedicalpractice.nhs.uk</a></p>	<p><b>Bar Hill Surgery</b> (01954) 780442 Out of hours (01954) 780442 - <i>call will automatically be diverted</i> Website:- <a href="http://www.mhmaple.co.uk/">www.mhmaple.co.uk/</a></p> <p><b>Fenstanton</b> 7E High Street, Fenstanton 01480 461873 Out of hours 111 Website:- <a href="http://www.riverportmedicalpractice.co.uk">www.riverportmedicalpractice.co.uk</a></p>
--	--

See our website at [www.swaveseymeridian.org.uk](http://www.swaveseymeridian.org.uk)  
for the full and latest surgery newsletters. Ed



## English Rose BEAUTY HOUSE

**BEAUTY, RELAXATION AND A WARM WELCOME...**

Specialists in Shellac nails, Manicures & Pedicures, Spray Tanning,  
Hair removal, Facials and Massage.

Stockists of Elemis Skincare, Sp@home and much more...

Gift Vouchers now available online at  
[www.englishrosebeautyhouse.co.uk](http://www.englishrosebeautyhouse.co.uk)

---

16 Berrycroft, Willingham, Cambridge CB24 5JX. Tel: 01954 261176

## SCHOOLS INFORMATION

### Swavesey Primary School Early Years and Playwork Centre

#### Wraparound Care and Early Years Provision – Mon to Fri – term-time

Registration Fee £15 per family for using Breakfast and/or After School Club

#### Breakfast Club 7.30 am – 8.55 am

3+ year olds to Year 6 children: £6 per child per session

#### After School Club 3.15 pm to 6.00 pm

For Reception to Year 6 children: £10 per child, family rate £9 per child

#### Early Years 9.00 am to 3.00 pm (full day) or morning (9-12/1) or afternoon (12-3)

For 2 ½ year olds to 4 year olds

Places for funded children up to 30 hours per week

Charged sessions:-

3+ year olds £13 half-day and £26 full-day

2 year olds £15 half-day and £30 full-day

£4.50 for lunch hour (12-1)

For more information and to register:-

<https://www.swavesey.cambs.sch.uk/page/?title=EY+%26amp%3B+P&pid=59>



9am – 10am	Sing Up	choir	4yrs – 12yrs
10am – 11am	Rockin' Rhythms I	interactive theory lessons	4yrs – 7yrs
	Rockin' Rhythms II		8+yrs
	Rockin' Rhythms III		Grade 3+
<b>NEW CLASS!</b>	Rock School Rockets	guitars, drums	beginners
11am – 12pm	SMS Community Orchestra	instrumental ensemble	all levels; all ages
	Rock School	guitars, drums, vocals	9+yrs

#### ***Now in its 9<sup>th</sup> Year!***

Check out our new class: RS Rockets

Also, SMS Community Orchestra, open to all ages; adults, parents: why not pick up that instrument from youth and join us on a Saturday morning?

Email for more information and to check availability.

**£4 per session!**

Swavesey Music School  
Swavesey Village College  
Gibraltar Lane  
Swavesey  
CB24 4RS

<http://swaveseyms.co.uk/>

## Swavesey Playtimers

**Tuesday 10-11.30am**  
In the back room of the Bethel Church, different craft activities, stories and themes each week. £2

**Wednesday 10-12noon**  
At the Memorial Hall, singing with Sharon from 11.15am. Family with one child, £3. More than one child, £4. Under 6 months. £2.

All children under 5 welcome to these term-time toddler groups. Find out what is going on from our Facebook group – "Swavesey playgroups". A great chance to meet local parents.

APRIL BURGESS MARTIN SCHOOL OF BALLET  
BALLET AT OVER PRIMARY SCHOOL  
THURSDAYS  
AGE 3+ -17  
CLASSICAL BALLET WITH FULLY TRAINED, QUALIFIED, EXPERIENCED TEACHER  
ASSOC. MEMBER ARBTA ;MEMBER BDQT  
DBS CHECKED "PREVENT" TRAINED  
DETAILS [www.abmschoolofdance.co.uk](http://www.abmschoolofdance.co.uk)  
CLASSES ALSO IN GIRTON HISTON & COTTENHAM

# SWAVESEY VILLAGE COLLEGE

## ADULT EDUCATION

### New Courses coming for Autumn 2021

#### Art & Crafts Courses

Watercolour Painting/Knitting & Crochet/Patchwork & Quilting/Mosaics

#### Health & Wellbeing Courses

Mindfulness Meditation/Pilates/Yoga/Tai Chi/Nordic  
Walking/Badminton/Foraging/Drumming & Tribal Dance

#### General & Languages Courses

Photography/Curry In a Hurry  
Language Courses Italian & Spanish

For more detailed information about all our courses please visit

[www.swaveseyvc.co.uk/community-education](http://www.swaveseyvc.co.uk/community-education)

When you visit Swavesey Village College Adult Education it may feel a little different from before, but our team will ensure that you have a safe experience whilst learning with us.

Please see our website for more information on our COVID procedures.

To book a place on our Autumn Courses

Please call 01954 234488

Email: [community@swaveseyvc.co.uk](mailto:community@swaveseyvc.co.uk)

[www.swaveseyvc.co.uk/community-education](http://www.swaveseyvc.co.uk/community-education)



After the summer holidays the Cubs and Scouts will be returning to face-to-face sessions in the middle of September.

Both the Cubs and Scouts have water activity days planned at Grafham Water in September which will hopefully be a lot of fun. At the end of last term the Cubs and Scouts went on an activity day at Skreens Park in Essex, they all got to do so many fun activities from Abseiling, Axe Throwing, learning Bushcraft skills

to the 250m Zip Wire, even though we couldn't camp out it was so much fun to be able to go and do this as a group.

#### Beavers:

It doesn't look like we are in a position to restart Beavers in Swavesey due to not having enough interest from adult leaders, we will try again for January 2022.

#### Cubs:

In August some of the Cubs joined lots of other Cubs from around Cambridgeshire and took part in #TheBigSplash. These were activity days on the water, this will hopefully get them practicing for their trip in September.

#### Scouts:

Scout numbers are continuing to grow and I believe we have 25 young people now attending the weekly sessions. We are also looking forward to the water activity day in September.

In July the Scouts spent two separate weekends navigating the rivers of the Fens on a narrow boat, it was lots of fun and we all got to drive the boat too.

If you would like to join either the Beavers, Cubs or Scouts then please do get in touch at the email address below. To confirm the ages for each section, Beavers 6-8years, Cubs 8-10½ years and the Scouts are 10½-14 years old.

#### Volunteers:

We are always after extra help and support, if you would like to help out but are unsure how, please do get in touch. Not only will you be able to give the young people of the village and surrounding areas new experiences and memories, but you will also get your own experiences and memories that will stay with you.

If you have any questions regarding joining as Beaver, Cub, Scout or as an adult volunteering or anything else relating to the Scout Group, please do get in touch with us by emailing us at [info@1stswaveseyscoutgroup.org.uk](mailto:info@1stswaveseyscoutgroup.org.uk) and we will happily get back to you as soon as possible.



## Rainbows, Brownies, Guides and Rangers.

On Saturday 26th June, sixty girls, (plus a few adults), from Swavesey Rainbows, Brownies, Guides and Rangers met at The Jarman Centre for a Bushcraft Day. At the time of planning restrictions did not allow for overnight stays, but outdoors there was no limit on numbers for youth groups. So, the idea was for an outdoors sleepover without the sleeping over!

The Jarman Centre is Girlguiding Cambridgeshire East's residential centre set in 18 acres of private woodland just outside Newmarket. The girls arrived at 11am and after the 'keeping safe' talk they set off in their groups to explore the grounds on a treasure hunt, the nine letters they found when rearranged spelt out the word BUSHCRAFT. The girls would spend the day working on tasks set by 2nd Chiddingfold Brownies in their Bushcraft Challenge badge.

After a loo break and hand washing the girls sat down to eat their packed lunches brought from home, followed by an afternoon of activities. Rainbows and Brownies made instruments using things they found in the woodland; with the help of paper cups, material and elastic bands there were several shakers, also stick xylophones, and even kicking your shoe against a tree trunk made music! Then they set to to make some nature art, we had butterflies, ladybirds, beetles and even a flamingo made with what they found on the ground. In the meantime, Guides and Rangers were learning knots and making camp gadgets.

Everyone helped to collect and grade firewood, and prepare snacks. The Guides and Rangers used different methods to light fires for us all to cook the snacks on, with the sun shining at just the right time to try the magnifying glass method! Brownies had a go at lighting a cotton wool ball wiped in Vaseline using a flint and steel, they found this less scary than lighting matches. Snacks were marshmallows on a stick, toast on a stick (with jam to spread on afterwards) and popcorn wrapped in foil with a little oil.

The next session was a choice of activities with some doing all, and some a few. They could make bird seed cupcakes with melted suet and bird seeds in cupcake cases, make three different bark rubbings, use the sheets with leaves to identify five trees, use the sheets to learn tracking signs and follow a trail, and make a den for a fairy, or a troll, or a small dragon.

During this time the Rangers had a specially arranged session with a Girlguiding knife skills expert who showed them how to make whistles - they were all successful, all made a noise!

Then it was dinner time; burgers and sausages cooked by our adult helpers on the BBQ. The girls were hungry by this time and eating took a little longer than planned, so parents who had come to collect the Rainbows and Brownies at 7pm had to wait a little while!

Guides and Rangers stayed on till 10pm, with a chance to complete any activities they had not had time for during the day, and a chill and chat time around the campfire. The Rangers had a singsong which caused lots of giggling and fun!

Throughout the day the girls had a chance to try some pyrography in their small groups enabling 1:1 supervision of the hot irons, they burnt designs on wooden discs, with some of the younger girls producing some work as lovely as the older girls did.

How to sum up the day?

Hands, Face, Space, Fresh Air - Sanitiser was squirted onto hands regularly throughout the day, faces were full of smiles, we enjoyed sharing the space as four units altogether and we had plenty of fresh air and expect as a result everyone slept very well!

Adult helpers are always welcome, please sign up here if you are interested or would like to know more. [www.girlguiding.org.uk/get-involved/](http://www.girlguiding.org.uk/get-involved/)

Rainbows and Brownies are full with waiting lists, sign your daughters up early for Rainbows, don't wait until she is 5 and her friends have started!

[www.girlguiding.org.uk/joinus](http://www.girlguiding.org.uk/joinus)

This is a situation that is only going to get worse with 200 new houses currently being built in Swavesey. Please get in touch if you think you can help or would like to know more. Another Rainbow and Brownie Unit are most likely going to be needed, and it is possible they could be run alongside the existing ones with both doing the same activities and leaders joining together for planning. There would be lots of help and support for anyone wanting to get involved.

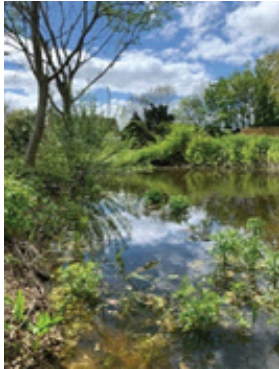
[www.girlguiding.org.uk/get-involved/become-a-volunteer/ways-of-volunteering/](http://www.girlguiding.org.uk/get-involved/become-a-volunteer/ways-of-volunteering/)

The Complete Gas Heating and Plumbing Company

Plumbing • Heating • Gas  
Bathrooms • Water Softeners  
Property Maintenance

Tel: 01954 204044 • Web: [www.entiregroup.co.uk](http://www.entiregroup.co.uk)  
Email: [service@entiregroup.co.uk](mailto:service@entiregroup.co.uk)

## Wildlife Ponds - Funding Available!



Ponds are a cherished part of the parish landscape; familiar features found at the heart of most village centres and in the wider countryside. Many ponds in Cambridgeshire pre-date parliamentary enclosure and are a fascinating and often overlooked historical resource, with much to tell us about local land use over the years. From marl pits to hammer ponds, in times past they were essential to agriculture and other industries. Uses ranged from watering livestock, retting cloth, rearing fish and trapping ducks for the table, to sourcing manure (when cleaned out) to fertilise the land. Wagons were driven through them to help tighten wagon wheels (think Constable's 'The Hay Wain'). When steam power arrived, the same ponds that had watered thirsty teams of plough horses were used to fill the water tanks of traction engines.

These days ponds are still vital to the farmed environment - as resources for wildlife. A wide array of flora and fauna is associated with pond habitats, including amphibians, grass snakes, bats, numerous dragonflies and other insects, water voles, otters, and many species of farmland bird. Many of these species are under threat. Sadly, due to changes in land use and agricultural practices, the UK has lost around 50% of ponds in the 20th Century alone.



Excitingly, funding is now available in certain parts of Cambridgeshire for the restoration and creation of ponds capable of supporting great crested newts. The funding is part of Natural England's District Level Licencing Scheme (DLL) for great crested newts, a new strategic approach to compensating the loss of newt habitats, which seeks to provide new ponds and bigger, better, more joined-up habitat for this orange-bellied amphibian at a landscape scale.

In Cambridgeshire there is a high demand for such wildlife ponds through the DLL scheme. If you have a pond creation or restoration project in mind in your parish, please email [jilly.mcnaughton@fwageast.org.uk](mailto:jilly.mcnaughton@fwageast.org.uk) or [martin.baker@wildlifebcn.org](mailto:martin.baker@wildlifebcn.org) to receive further information or to arrange an informal chat.

Dear All

It is good to be able to write again - I am not allowed to write during the election period which means that I have not been in the last two copies of The Meridian. So quite a lot of news to share. I hope you are all enjoying the summer and that the restrictions have not stopped you doing all of your favourite activities. I think the greatest problem is not knowing when it is going to end as you just cannot make plans and it is the anticipation which often provides the greatest pleasure. - take the football matches for example! I would like to thank all those people who have 'been there' when they were needed as a result of the pandemic, other illness, flooding, and personal disasters. They are too numerous to list and there are many who quietly work behind the scenes but THANK YOU - it is what keeps our community together. Congratulations to the Thistle Green residents who managed to get South Cambs to agree they could go back to using their community room. When authorities treat elderly people as children my blood boils!

The new housing in the village has moved on a pace since I last wrote. Welcome to all the new residents on the Bloor site - hopefully we shall soon all get used to the street names as the residents are integrated into the village community. South Cambs District Council, aided by Linda Miller as Clerk to the Parish Council and myself have written a Welcome Pack which contains all the contact details for village activities, groups and resources. We have also identified educational, religious and retail buildings with link names and telephone numbers to ensure new residents feel welcome and included. I am so proud of our village environment with the Byeways, lakes and open space, we are so fortunate, let's keep them looking beautiful. I have delivered a Welcome pack to every house which is occupied but will keep an eye out for new occupations. These packs are also available for residents moving into established housing so do ask if you need any. I shall be placing some in the shops, library, Memorial Hall etc. Of course these will need to be updated as contacts change and new groups are formed - please keep us informed of any changes you know and we will reprint next year.

The Middlewatch development is also moving forward rapidly, although quite disruptive at first mainly because of the flooding it now seems to have made a much better entrance. As result of all the development in the village I, as District Councillor, chair a liaison meeting which all the developers, the County Council, Drainage Boards, District Council and Parish Council attends. We are able to talk through concerns on both sides, learn from each other and solve problems before they escalate. The main concern at present is the Ramper road junction with additional traffic, new entrances from the two new sites and the lack of a footpath on the far side resulting in pedestrians from Ramper Road having to cross a very busy junction to get to the shop or school.

If you have a problem as a result of the developments please let me know and we will raise it at the next meeting.

Well I have rambled on enough. Please feel to contact me at any time with any problem I can help to solve. My home phone is 01954 202923 and mobile is 07774146331

Best wishes  
Sue Ellington  
South Cambs District Councillor for Swavesey Ward

# SWAVESEY PARISH

## Parish Council News May June 2021

**A Welcome Brochure** to the village has been published and printed. This has been distributed to new residents in the village and generally is available from shops and key outlets in the village.

### **ANNUAL GENERAL MEETING 05/05/2021**

The annual meeting of the PC confirmed and appointed members to the various working groups etc and reviewed the various procedures necessary for the functioning of the PC. Mr W Wright agreed to continue as Chair for the coming year and Miss H Parish to become Vice-Chair. The June 28<sup>th</sup> meeting went ahead in person in the main hall of the Memorial Hall. Future meetings are as planned but exact room location will be dependent on COVID rules at the time.

### **COVID 19**

Due to recent Government restrictions for COVID 19 the PC were unable to hold their scheduled end of May meeting. In person meetings are now possible and returned to the Memorial Hall from 10<sup>th</sup> June.

### **COUNTY COUNCIL**

Highways maintenance by the Highways Dept. is continuing.

The PC is dissatisfied with the state of the roads, especially the number of potholes. Recent rain has shown up areas where road drains have not been cleared effectively. The PC is to raise the lack of maintenance with the newly elected County Council leader and Chair of the highways committee.

Residents have raised concerns about flooding in Wallman's Lane and Ramper Road Boxworth End areas. The Clerk is to look into the history of recent flooding events and the PC will continue to challenge the planning decision to discharge surface water from a section of the housing development opposite the Ramper Road junction into the foul sewer.

The PC is to deploy the speed watch monitor in Ramper Road in an effort to slow traffic particularly as it leaves the village. The PC is awaiting a date for the continued discussion over potential traffic calming options for Ramper Road and Boxworth End, with funding from the Northstowe Developers.

# COUNCIL NEWS

Work to repair a section of Gibraltar Lane will take place during the school holidays. Requests are still being made by the PC for footpath repairs.

The PC is to review previous discussions with the County Highways Dept. for a safe crossing to the High Street at the recreation ground.

### **DISTRICT COUNCIL**

The SCDC is considering extending the rules governing licences for Street Traders to include smaller villages and communities in addition to those larger villages already covered. The PC has concerns that this may discourage small traders from visiting the village.

A number of planning applications and issues were addressed. In particular the PC has expressed concerns that where planning approvals are not followed, then enforcement by SCDC is not being followed up.

### **DRAINAGE**

Cllr Mr Wilderspin is working with the Middle Level Commissioners and continues to press for action on major drainage works affecting the village.

Work is underway to improve and raise the banks to the drain across Mare Fen.

### **FINANCE**

The Internal Auditor Report was received and circulated.

The Annual Governance Statement and Accounting Statement for 2020/21 were approved by the PC. The PC agreed a grant to the Cambridge Search and Rescue organisation to support volunteers in this area.

### **VILLAGE MATTERS**

Some anti-social behaviour has been reported from young people using benches on the village green. The benches affected have been temporarily removed.

The PC is to work with CCC Highways Department to install cycle stands at the western end of Market Street.

The PC agreed to replace two damaged Gazebos for community use.

**Swavesey Parish Council**  
**Website:- [www.swavesey.org.uk](http://www.swavesey.org.uk)**

Parish Councillors	Telephone (01954)	E-mail address
Warren Wright (Chairman)	203172	wwright@swavesey.org.uk
John Pook (Vice-Chairman)	230978	jpook@swavesey.org.uk
Martin Johnston	200605	mjohnston@swavesey.org.uk
Lisa Boyes	232603	lboyes@swavesey.org.uk
James Dodson	230560	jdodson@swavesey.org.uk
Stuart Faben	07887 906982	sfaben@swavesey.org.uk
Hannah Parish	203035	hparish@swavesey.org.uk
Colin Parsons	230861	cparsons@swavesey.org.uk
Sandie Smith	232356	ssmith@swavesey.org.uk
Keith Wilderspin	230083	kwilderspin@swavesey.org.uk
Doug Hunt	232478	dhunt@swavesey.org.uk
Clerk: Linda Miller	202982	clerk@swavesey.org.uk
District Councillor: Sue Ellington	202923	cllr.ellington@scambs.gov.uk
County Councillor: Mandy Smith Papworth & Swavesey Ward	230248	mandy.smith@cambridgeshire.gov.uk
Memorial Hall Administrator: Nicole Mullee	07963 861791	memorialhall@swavesey.org.uk



**SACRED HEART OF JESUS**  
**Roman-Catholic Parish**  
**19 Needingworth Road, St Ives, Cambs. PE27 5JT**

**Parish Priest: Rev Thomas J Walton**

Tel: 01480 462 192  
[www.sacredheart-stives.org.uk](http://www.sacredheart-stives.org.uk)  
 email: [office@sacredheart-stives.org.uk](mailto:office@sacredheart-stives.org.uk)

Mass Times:  
 Saturday 17.00 (Anticipatory)  
 Sunday 08.00 and 11.00

**BC Landcrafts**  
 BESPOKE LANDSCAPING & TREE SURGERY

- o TREE SURGERY & HEDGE MAINTENANCE
- o FENCING, DOMESTIC - AGRICULTURAL & SECURITY
- o LAWNS - TURFING & SEEDING
- o PERSONAL GARDEN DESIGN & BUILD PROJECTS
- o HARD LANDSCAPING
- o PAVING & DRIVEWAYS
- o LOGS & FIREWOOD



Contact Ben Carter on  
 Tel: 01954 250830  
 Mob: 07836 654252

Email: [ben@bclandcrafts.co.uk](mailto:ben@bclandcrafts.co.uk)  
 Web: [www.bclandcrafts.co.uk](http://www.bclandcrafts.co.uk)

Family firm  
since 1974

# PEST PROBLEM?

LOCAL QUALITY SERVICE

pest control/prevention/  
 emergencies/contracts/quotations/  
 birds/rodents/insects/more...

t: 01954 230708  
 m: 07836 245670  
 w: [www.drepestcontrol.co.uk](http://www.drepestcontrol.co.uk)  
 e: [info@drepestcontrol.co.uk](mailto:info@drepestcontrol.co.uk)




19, WALLMANS LANE  
 CAMBRIDGE  
 CB24 4QY

## LANGLEY & Co.

### Accountants

**Are you paying too much tax?**  
**Are you claiming all your business expenses?**  
**Do you need help with your accounting and taxation affairs?**

We provide a complete range of accounting and taxation services including:

- ◆ Accounts preparation for sole traders, partnerships and small businesses including limited companies
  - ◆ Self assessment preparation and online filing
  - ◆ Bookkeeping including payroll, CIS and VAT
- ◆ Taxation advice
- ◆ Business start-ups
- ◆ Business planning
- ◆ Pension reviews

For a friendly and competitively priced service from local accountants please contact Doug Langley at:

Unit C1, 2 Station Road, Swavesey, CB24 4QJ  
 Tel: 01954 231249 Email: [doug@langleyaccountants.co.uk](mailto:doug@langleyaccountants.co.uk)

## The Parish Church of St Andrew



We are delighted to be able to invite you to take part in a service in church every Sunday from the beginning of August, provided that things have progressed as planned. We also have weddings to celebrate and some baptisms as well. Maybe, things really are beginning to get back to something approaching normal!

The church is now open every day from 9am to 4pm and we invite you to explore our building (following all current Covid precautions) and to enjoy the tranquillity of the graveyard during this stay-at-home summer.

For up-to-date information about our services and times of opening, please check our Facebook page, our page on the benefice website:  
[www.5folds.org.uk/church/st-andrews-swavesey](http://www.5folds.org.uk/church/st-andrews-swavesey)  
or look at the notice boards in the graveyard.

For details about our regular online services, go to:  
[www.5folds.org.uk/page/online-services-and-resources](http://www.5folds.org.uk/page/online-services-and-resources).

For more information, please contact Nicky Carne: 01954 230971, Jacqui Fuller: 01954 230774, Rev Simon Gill: 01954 230434 or Rev Lucy Cleland: 01954 277758.

## How do you eat an elephant?

Sounds an impossible task - it's far too big! The answer is slice by slice. There seem to be so many things going wrong in our world at the moment it can feel overwhelming.

Bill Hybels, the leader of a big church in America, talks of one period in his life when everything was going disastrously wrong: his church was on the verge of bankruptcy and people were resigning from their jobs. He spent an entire night in prayer and in tears pleading for God to intervene and to show him how to turn the situation around. The answer to prayer was simple: "Bill, go to work tomorrow". Just carry on.

By carrying on and dealing with the problems each day brought, he saw his church not only survive but ultimately thrive. Jesus tells us not to worry about tomorrow, for today has plenty of trouble in it! Not easy, when there are so many things to concern us - but advice worth following.

Keep our eyes and effort focussed on whatever is to do today. That way, maybe, we will succeed in eating a whole elephant.

God bless,

Simon Gill.

Team Rector, Swavesey.

**tutor  
doctor**  
How learning hits home.

**BECOME A  
TUTOR!**

**Tutors needed: All subjects and ages**  
**Tutor Doctor Cambridge**  
**01223 430432**  
[www.tutordocor.co.uk/cambridge](http://www.tutordocor.co.uk/cambridge)

## **CHIROPODIST/ PODIATRIST**

I can offer a professional service  
in your own home.

For further details please ring  
**01954 201256**

Biomechanical assessments &  
orthotic therapy also available.

*Michelle Dolan*  
HCPC Registered Chiropodist/Podiatrist  
CH34864

*e-mail: michelledolan@outlook.com*



We are so pleased to be returning to Church soon, we have held online services now for sixteen months! Although we are so excited to be able to worship together again we are grateful for all that we have learnt over those months and the doors that online services have opened for us. For this reason we intend to live stream our services going forwards. If you've been able to watch our services during lockdowns and would like to meet in person you are most welcome to join us, or to continue watching online.

We now have our own app which is available on both android and apple phones by searching Bethel Baptist Church Swavesey. You can watch our latest services online, book in person services and keep up to date with everything going on here at Bethel.

## CONTACT US

In times of uncertainty we want you to know you can count on God, and by extension us as a church. Please do not hesitate to reach out.

*Stacey Alsop (Admin) - [admin@bethelbaptistchurch.org.uk](mailto:admin@bethelbaptistchurch.org.uk)*

*John Porter (Secretary) - [secretary@bethelbaptistchurch.org.uk](mailto:secretary@bethelbaptistchurch.org.uk)*

*Wendy Whistler (Treasurer) [treasurer@bethelbaptistchurch.org.uk](mailto:treasurer@bethelbaptistchurch.org.uk)*

*Marianne Holt (Youthworker) - [marianne@bethelbaptistchurch.org.uk](mailto:marianne@bethelbaptistchurch.org.uk)*

*Wendy Snead (Pastoral Care) - [pastoralcare@bethelbaptistchurch.org.uk](mailto:pastoralcare@bethelbaptistchurch.org.uk)*

*[www.bethelbaptistchurch.org.uk](http://www.bethelbaptistchurch.org.uk)*

*[www.facebook.co.uk/SwaveseyBethel](https://www.facebook.co.uk/SwaveseyBethel)*

*[www.youtube.com/SwaveseyBethel](https://www.youtube.com/SwaveseyBethel)*

*Bethel Baptist Church Swavesey on Apple and Android*



Bethel Baptist Church is celebrating **Silver Sunday on Sunday 3rd October** and invites you to a **Vintage Tea Party**.

Silver Sunday is a national day when the nation is asked to pause and think about older people and loneliness. We will be marking Silver Sunday by launching our exciting new weekly venture, **Club Vintage**, to support older people. Club Vintage extends a special welcome to people with dementia and their carers.

Club Vintage will meet **every Wednesday from 2pm to 4pm at Bethel Baptist Church, Swavesey** from Wednesday 6th October. Each week in the month will have a different theme, to include:

- Exercise - Love to Move, a chair-based exercise programme that is aimed at older folk and is dementia friendly
- Music and singing
- Activities with young children
- Messy Vintage, Bible-based craft activities
- Visiting speakers

The activities help those who have been lonely and isolated to meet new people and are known to have benefits for mental and physical well-being. A special vintage afternoon tea will be served each week. Carers are most welcome to join with the person they care for - we want to support you as well!

For more information, please contact Stacey on [admin@bethelbaptistchurch.org.uk](mailto:admin@bethelbaptistchurch.org.uk) and look out for more details about booking. We look forward to welcoming you!

## Community Groups & Charities

Swavesey Neighbourhood Plan Steering Group	A voluntary group who meet on the first Monday each month to set out the vision for Swavesey and the planning policies needed to manage development according to the wishes of the local community. See <a href="http://www.swavesey.org.uk/neighbourhood-plan/">http://www.swavesey.org.uk/neighbourhood-plan/</a> or Email: <a href="mailto:clerk@swavesey.org.uk">clerk@swavesey.org.uk</a> for more information
Cam Sight	Cam Sight is a local charity which offers support to anyone with a visual impairment, along with their family and carers. We meet on the 4th Wednesday afternoon of each month in Bar Hill. For more information please telephone Joan in Bar Hill on 01954 200622 or Alison at Cam Sight on 01223 420033 or email <a href="mailto:alison@camsight.org.uk">alison@camsight.org.uk</a> . For more info see:- <a href="http://www.camsight.org.uk">www.camsight.org.uk</a>
Cambridgeshire Hearing Help	CHH is a charity that helps people with hearing loss. Volunteers service NHS hearing aids and provide batteries and they attend Swavesey quarterly at Thistle Green. Advice on any aspects of hearing loss is available at a hearing help session or by calling the office on 01223 416141, e-mail <a href="mailto:enquiries@cambridgeshirehearinghelp.org.uk">enquiries@cambridgeshirehearinghelp.org.uk</a> or check the website <a href="http://cambridgeshirehearinghelp.org.uk">cambridgeshirehearinghelp.org.uk</a>
Care Network	Care Network supports volunteers, encourages independence and develops good neighbour projects. We provide the Welcome Home from Hospital service across Cambridgeshire. Contact:- Care Network, 5 Broadway House, 149-151 St Neots Rd, Hardwick, Cambridge, CB23 7QJ (tel: 01954 211919). <a href="http://care-network.org.uk/">care-network.org.uk/</a>
Community First Responder Scheme	The local group in Over and Swavesey has provided help over many hours and attended over 20 patients in your community. You can support the group and help to fundraise for equipment or volunteer to become a Community First Responder within your community. Contact:- <a href="mailto:responderadmin@eastamb.nhs.uk">responderadmin@eastamb.nhs.uk</a> or call 01284 731802
Swavesey Library	A volunteer run community library based in Swavesey Village College. We are able to providing a full range of library facilities being directly linked to the Cambridgeshire County Council library service. For more info see:- <a href="http://www.swavesey.org.uk/village-link/swavesey-library">www.swavesey.org.uk/village-link/swavesey-library</a>
The Friends of the Rosie Hospital	The Friends of the Rosie Hospital are helping to make the Rosie a more comfortable environment for mothers and babies. Contact:- Mrs Mary Sanders (Hon Chair) <a href="mailto:rosieinstitches@ukonline.co.uk">rosieinstitches@ukonline.co.uk</a> Tel 01223 356615
East Anglia's Children's Hospice (EACH)	Put your free time to good use and volunteer at East Anglia's Children's Hospice (EACH) in Milton. Volunteering at a children's hospice doesn't always mean care work and fundraising as there are also tasks such as admin and maintenance of the grounds. Contact:- Clare Bates on 01223 815 134, email <a href="mailto:clare.bates@each.org.uk">clare.bates@each.org.uk</a>
Community Resourcing	We have a small group of local volunteers (local residents from our community) who would like to help other members of our community with any practical tasks. Contact:- Parish Council Tel: 01954 202982 or Email: <a href="mailto:clerk@swavesey.org.uk">clerk@swavesey.org.uk</a>
OWLS Community Car Scheme	Run by DBS checked volunteers the scheme offers a door-to-door service, for medical or some social journeys, to people who are unable to access other forms of transport. Ring 07505 254363 to book a journey, find out more, or to volunteer as a driver

## CLUB INFORMATION

Army Cadet Force	Swavesey Detachment, No 2 (Cromwell) Company, Cambridgeshire Army Cadet Force meets each Tuesday evening at the Swavesey Village College from 7 pm. New recruits are welcomed from ages 12 years (year 8) to 18 years. Contact - Sgt Phill Barrett phone 07786981380																								
Over District Girlguiding Swavesey and Over	<table border="1"> <thead> <tr> <th>Unit</th> <th>Evening</th> <th>Contact</th> </tr> </thead> <tbody> <tr> <td>Swavesey Rainbows</td> <td>Thurs</td> <td><a href="mailto:caroline@overroad.co.uk">caroline@overroad.co.uk</a></td> </tr> <tr> <td>Swavesey Brownies</td> <td>Mon</td> <td><a href="mailto:swaveseyeagleowl@gmail.com">swaveseyeagleowl@gmail.com</a></td> </tr> <tr> <td>Swavesey Guides</td> <td>Thurs</td> <td><a href="mailto:swaveseyguides@gmail.com">swaveseyguides@gmail.com</a></td> </tr> <tr> <td>Over Rainbows</td> <td>Mon</td> <td></td> </tr> <tr> <td>Swavesey Rangers</td> <td>Thurs</td> <td><a href="mailto:seniorsectionoverdistrict@gmail.com">seniorsectionoverdistrict@gmail.com</a></td> </tr> <tr> <td>Over Brownies</td> <td>Wed</td> <td></td> </tr> <tr> <td>Over Guides</td> <td>Tue</td> <td></td> </tr> </tbody> </table>	Unit	Evening	Contact	Swavesey Rainbows	Thurs	<a href="mailto:caroline@overroad.co.uk">caroline@overroad.co.uk</a>	Swavesey Brownies	Mon	<a href="mailto:swaveseyeagleowl@gmail.com">swaveseyeagleowl@gmail.com</a>	Swavesey Guides	Thurs	<a href="mailto:swaveseyguides@gmail.com">swaveseyguides@gmail.com</a>	Over Rainbows	Mon		Swavesey Rangers	Thurs	<a href="mailto:seniorsectionoverdistrict@gmail.com">seniorsectionoverdistrict@gmail.com</a>	Over Brownies	Wed		Over Guides	Tue	
Unit	Evening	Contact																							
Swavesey Rainbows	Thurs	<a href="mailto:caroline@overroad.co.uk">caroline@overroad.co.uk</a>																							
Swavesey Brownies	Mon	<a href="mailto:swaveseyeagleowl@gmail.com">swaveseyeagleowl@gmail.com</a>																							
Swavesey Guides	Thurs	<a href="mailto:swaveseyguides@gmail.com">swaveseyguides@gmail.com</a>																							
Over Rainbows	Mon																								
Swavesey Rangers	Thurs	<a href="mailto:seniorsectionoverdistrict@gmail.com">seniorsectionoverdistrict@gmail.com</a>																							
Over Brownies	Wed																								
Over Guides	Tue																								
Swavesey Spartans	Swavesey Spartans are a Chartered Standard Youth Football Club affiliated to Cambridgeshire Football Association. The club runs boys and girls teams from under 6 through to under 17. For information and enquiries please contact Chairperson - Mr Darren Bucknall 07872 681167 Secretary - Mr Simon Dawson 07886 215205 Club Welfare Officer - Carolyn Merricks on 01954 204972																								
1st Swavesey Scout Group	All sections meet at the Scout Hut on the SVC site. <b>Cubs</b> Day: Tuesday. Time: 18:00 to 19:15 Contact: Steven Wilson - Cub Leader Email: <a href="mailto:steven.wilson@1stswaveseyscoutgroup.org.uk">steven.wilson@1stswaveseyscoutgroup.org.uk</a> <b>Scouts</b> Day: Monday. Time: 19:00 to 20:30 Contact: Jim Burling - Group Scout Leader Email: <a href="mailto:jim.burling@1stswaveseyscoutgroup.org.uk">jim.burling@1stswaveseyscoutgroup.org.uk</a> For any other Scouting enquiries Email: <a href="mailto:info@1stswaveseyscoutgroup.org.uk">info@1stswaveseyscoutgroup.org.uk</a>																								
Swavesey Early Years and Playwork Centre	Swavesey Early Years and Playwork Centre are based in their own purpose-built unit on the primary school site. It comprises Early Years children (aged 2 – 4 years) between 9am and 3pm (formerly Swavesey Pre School) and we provide activities and care for primary school aged children before and after school. Breakfast Club runs from 7.30 am to 9am and After School Club from 3.15pm to 6pm. For information please contact Carol Panther (Early Years and Playwork Manager) by email: <a href="mailto:eyandp@swavesey.cambs.sch.uk">eyandp@swavesey.cambs.sch.uk</a> or by phone 01954 273312 or 07803 812221.																								
Swavesey Music School	Meets every Saturday of term time at Swavesey Village College. Only £3.00 per session. For further details see: <a href="http://www.swaveseymusic.co.uk/">www.swaveseymusic.co.uk/</a>																								

Health and Wellbeing Club	A club for older adults which runs on the last Tuesday of the month with the exception of December. The group meets at the Community Centre, Thistle Green, Swavesey from 10.00 to 11.30am. Refreshments, chair-based exercises, speakers and time for conversation. No booking is required and the group is Free.
British Tang Soo Do Institute	British Tang Soo Do Institute practices the Korean martial art of Tang Soo Do. Our club training covers self defence techniques and many aspects of fitness including flexibility, coordination, conditioning, balance and discipline helping to promote a healthy lifestyle. For further information please contact Master Jeff Cockram on 07863 345681 or <a href="mailto:jeff@btsdi.co.uk">jeff@btsdi.co.uk</a> or see our website: <a href="http://www.btsdi.com">www.btsdi.com</a>
Swavesey Tang Soo Do Club	Swavesey Tang Soo Do have classes on a Monday and Wednesday in the primary school main hall. Beginners and junior grades are 6pm-7pm and senior grades 7pm-8:15pm. The contact details are Mr and Mrs Morton 07919 050261 and <a href="mailto:enquiries@swaveseytsd.co.uk">enquiries@swaveseytsd.co.uk</a> . The website is <a href="http://www.swaveseytsd.co.uk">www.swaveseytsd.co.uk</a>
Allotments in Swavesey	Down Hale Road towards the windmill and on the right there are 61 plots, mostly 150 sq yds (125 m2) in area, backed up by eight water tanks. Large yields of a wide range of high quality vegetable, fruit and flower crops can be grown successfully. If you are interested in joining the waiting list contact Russell Fear on 01954 202846.
British Legion	For information contact:- Secretary - Angela Dye. 01954 277453. email: <a href="mailto:dyeangela0@gmail.com">dyeangela0@gmail.com</a>
Swavesey Badminton Club	Located at the Swavesey Village College Sports Centre. The Club offers a high standard of play at club nights on Tuesdays 7pm to 8pm and on Fridays from 6.30pm to 9.30pm. We play competitive badminton in the Cambridge leagues and run men's, women's and mixed teams. Contact Helen Taylor on 01954 230997 Email: <a href="mailto:enquiries@swaveseybadminton.net">enquiries@swaveseybadminton.net</a> website: <a href="http://www.swaveseybadminton.net">www.swaveseybadminton.net</a>
Swavesey Billiards and Snooker Club	For information/membership please contact Graeme Waites (01954 230113) Email <a href="mailto:graham.waites566@btinternet.com">graham.waites566@btinternet.com</a>
Swavesey Camera Club	At Swavesey Camera Club we are proud to cater for photographers of all standards. For more information visit our website at <a href="http://www.swaveseycameraclub.co.uk">www.swaveseycameraclub.co.uk</a> . We meet every Thursday, 7.30 - 9.30pm, Lecture Room, SVC. Non-members welcome - £4 charge (first visit free). For further details please ring Simon Shore 01954 230848
Swavesey Squash Club	Swavesey Squash Club has three international standard squash courts, in our recently refurbished clubhouse, on the Swavesey Village College site. The club has a number of weekly sessions running, suitable for beginners, improvers, and more advanced players. Unlimited use of the facility from £17 a month. A welcoming and active community club with social events and opportunities for competition. Visit our website for more details or contact Ali Loke on 07776 176866/ <a href="mailto:ali@alilokesquash.com">ali@alilokesquash.com</a> . <a href="http://www.swaveseysquash.com">www.swaveseysquash.com</a>

Over Netball Club	We train on a Tuesday night 7pm till 8.30pm on the outdoor courts at Swavesey Village College. Small friendly club, play in CDNL local league, beginners/ everyone welcome. Cost £3 per session. Contact is Lindsay Foster - <a href="mailto:lindsayfoster001@gmail.com">lindsayfoster001@gmail.com</a> 01954 202070 or 07543 460725
Compass Cafe	Meets every Thursday morning from 10.30 until 12.00 at Bethel Baptist Church. Contact Sue Ellington on 01954 202923 or <a href="mailto:sue.ellington@virgin.net">sue.ellington@virgin.net</a>
Swavesey Community Choir	If you enjoy singing and having fun then come and join Swavesey Community Choir. We meet every Wednesday in term time in St. Cecilia's Hall at SVC, from 7.30pm - 9pm. You don't need to be able to read music and no auditions needed, tenor and bass voices particularly welcome. For further details contact Chrissie Richardson 07881 824095. Website: <a href="http://www.swaveseycommunitychoir.co.uk">www.swaveseycommunitychoir.co.uk</a>
Swavesey District Bridleway Association	A liaison group representing local horse riders whose main aim is to protect existing and create safe new horse riding links between all local villages. New members welcome. Regular Newsletter/Social events calendar. Please contact Sue Rogers (01954) 232758
Swavesey & District History Society	Meet every third Tuesday in the month, 7.30pm, Global Resources Centre, SVC. Contact Carolyn Redmayne, Secretary (01954) 230037
Swavesey Institute Football Club	New players always welcome, please contact: Phil Baines on 01954 200377 [Saturday sides] or Jerry Ladell on (01954) 201018 [Veterans side].
Linedance	Linedance classes held on Wednesday mornings at the Bethel Baptist Church 9-30 to 11-30 am. Beginners always welcome. Contact Deborah Walker 01954231382 Email: <a href="mailto:deborahwalker105@talktalk.net">deborahwalker105@talktalk.net</a>
Swavesey & Over Conservation Society	Meet at Bethel Baptist Church, Middlewatch Swavesey CB24 4RP commencing at 7.30pm on the 2 <sup>nd</sup> Wednesday of the month unless otherwise stated. If you need a lift: PHONE: Trevor Grange - 01954 230119 or Pat Miles - 01954 780485. Guests Are Always Welcome!
Swavesey & Over Tennis Club	Club night 1 October to 1 April is on Monday, 7.00 to 9.00pm. From 1 April - 30 September there will be club nights on both Mondays and Wednesdays. We welcome new members from anywhere in the locality. Further information from <a href="mailto:s.taylor996@btinternet.com">s.taylor996@btinternet.com</a> <a href="http://www.swaveseyandovertennisclub.btcc.co.uk">www.swaveseyandovertennisclub.btcc.co.uk</a>
Swavesey RADSoc	Friendly local drama group staging two or three productions a year. New members always welcome. Contact: Nathalie Balzano: <a href="mailto:nathaliewoodward@hotmail.com">nathaliewoodward@hotmail.com</a> Visit our website at <a href="http://www.swaveseyradsoc.org.uk">www.swaveseyradsoc.org.uk</a>
Swavesey Speakers	Develop your public speaking skills at this Toastmasters International club. Guests welcome! 1 <sup>st</sup> & 3 <sup>rd</sup> Tuesday of every month at the Memorial Hall from 7pm to 9pm (occasional venue change). More details: <a href="http://www.swaveseyspeakers.toastmastersclubs.org">www.swaveseyspeakers.toastmastersclubs.org</a> or call/text Faye on 07908 443610.
Swavesey W.I.	We meet every second Monday of the month at 7.30pm in the Memorial Hall. New members are always welcome to enjoy a variety of invited speakers and have a chat and cup of tea/coffee afterwards. For further information contact Linda Saunders (01954) 201162
Women's Walking	Women's Walking on Mondays and Fridays at 10:00AM. Meet on Market Street green. Walk for approximately one hour on pathways in and around Swavesey. A chance to exercise and chat. Reasonably robust footwear recommended. All welcome. Clare Fox 01954 202882

# THE MERIDIAN ADVERTISER August/September

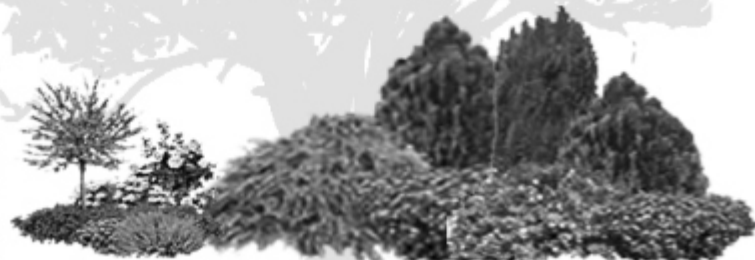
## Landscaping & Garden Services

Grower & Supplier of Trees, Shrubs & Hedges



- ✘ Supply and or planting of trees, shrubs and hedges
- ✘ Cutting / Pruning of trees, shrubs and hedges.
- ✘ Land Preparation, spraying, lawn seeding and turfing
- ✘ General maintenance, clearance and repairs
- ✘ Fencing, Gates and Paving

For a FREE estimate phone :- 07786699977  
or 01954 770306  
or visit [www.eparish-landscaping.co.uk](http://www.eparish-landscaping.co.uk)  
or Email : [edwin@parishnet.co.uk](mailto:edwin@parishnet.co.uk)



## ANDREW EVANS

01954 780 999 – 01223 864335  
email: [andrew@omegaclean.co.uk](mailto:andrew@omegaclean.co.uk)  
[www.omegaclean.co.uk](http://www.omegaclean.co.uk)

- ✓ Carpet Cleaning
- ✓ Upholstery Cleaning
- ✓ Tile & Grout Cleaning
- ✓ Leather Cleaning
- ✓ Oriental Rug Cleaning
- ✓ Carpet & Fabric Protection
- ✓ Allergy Relief Treatment
- ✓ Odour Eradication
- ✓ Stain Removal
- ✓ Carpet Fitting

Family Business Since 1980



## M.B. FLACK

Interior & Exterior  
Painter & Decorator  
& Repairs

30+ Years Experience  
in the trade.

**Free Estimates**

Telephone  
**01954 231 915**

## ALEX ARTHURS BUILDING SERVICES

ALL ASPECTS OF BRICKWORK UNDERTAKEN

EXTENSIONS • TRADITIONAL BRICKWORK • ALTERATIONS  
GARDEN WALLS • CHIMNEY REBUILDING • REPOINTING  
FIREPLACES • STONE SILLS AND THRESHOLDS

PAVING • SLABS & NATURAL STONE • BLOCK PAVING  
CONCRETING • GROUNDWORKS • FENCING • DECKING

FOR A FREE QUOTATION & ADVICE CALL ALEX ARTHURS

**01954 232050 or 07841 433652**

# YOUR PERSONAL WEALTH. OUR PERSONAL RESPONSIBILITY.

At Tilney, we have been helping clients achieve their financial goals for more than 180 years. Whether you are saving for retirement, want to pass on your wealth or would like to have your investments managed by an expert, we can do the same for you.

To find out how we can help you, please call our Cambridge office on **01223 452 840** or email [neil.trickett@tilney.co.uk](mailto:neil.trickett@tilney.co.uk) for Investment Management or [laura.ingram@tilney.co.uk](mailto:laura.ingram@tilney.co.uk) for Financial Planning.

Investments carry risk –  
investors can lose money investing.  
[tilney.co.uk](http://tilney.co.uk)



PLANNING | ADVISING | INVESTING

## Do you need a chiroprapist? Are you sure?



As a fully qualified foot health practitioner  
I am trained in the following:

Diabetic foot health care  
Toenail cutting  
Corn and callous removal  
Bunion relief  
Minor wound dressing  
And the treatment of many other foot health problems.

All in the comfort of your own home.

**Tracy Griffiths**  
Foot Health Practitioner

Call today to make an appointment  
Telephone: 07840 636883  
Email: [tracy.griffiths@hotmail.com](mailto:tracy.griffiths@hotmail.com)

## MOBILITY EQUIPMENT

SCOOTERS, WHEELCHAIRS,  
RISING CHAIRS, BEDS,  
WALKERS, TOILET, BATHING,  
KITCHEN AIDS, STAIRLIFTS,  
CONTINENCE CARE

Orchard Mobility Centre  
Scotsdales Garden Centre  
High Street  
Horningsea  
CB25 9JG



01223 863908

Mon to Sat 9.00 - 5.00



# Alpha Cars

01954  
23 23 00

[www.alphacarsonline.co.uk](http://www.alphacarsonline.co.uk)

Your local, reliable taxi firm  
*think taxi, think Alpha Cars*

• Corporate Accounts Welcome • Nights Out  
• Airport Transfers • Village to Village

# Buttercups CHILDCARE LTD

Childcare and Early Years education for children aged 4 months to 5 years.

We are now open and following stringent Government guidance.  
Staff trained in Covid-19 Awareness.

Monday to Friday, 7.30am to 6pm (excluding Bank Holidays), 50 weeks a year.

2 and 3 year old funded spaces available (including 30 hours.)  
Video tour available on request.

Find us in Gladeside, Bar Hill, Cambridge, CB23 8DY.

Contact the Nursery  
Phone: 01954 488081  
Email: [nursery@buttercupschildcareltd.co.uk](mailto:nursery@buttercupschildcareltd.co.uk)

[www.buttercupschildcareltd.co.uk](http://www.buttercupschildcareltd.co.uk)

## Sales: Servicing Salt

- ▶ Supply & Installation Service
- ▶ Servicing & Repairs
- ▶ Drinking Water Systems
- ▶ Salt Delivery & Collection

[www.aquastream-softeners.co.uk](http://www.aquastream-softeners.co.uk)

Unit 17 Meridian, Buckingham Business Park, Anderson Road, Swavesey, Cambridge, CB24 4AE

**AQUASTREAM**  
Water Softeners limited

01954 230898



**Authorised  
Ecowater & Kinetico  
Dealership**



## Andy Tibbett & Sons Painting & Decorating



- \* All internal & external work carried out to a high standard
- \* Trade references can be supplied
- \* Very competitive pricing
- \* A prompt & polite service from a name you can trust

Telephone: 01954 230810

Mobile: 07717 493723

Email: [andrewtibbett@hotmail.co.uk](mailto:andrewtibbett@hotmail.co.uk)



# Ash Croft Veterinary Surgery

169 St. Neots Road,  
Hardwick, Cambridge CB23 7QJ  
Mon.-Fri. 8.30am - 10.30am  
4.30pm - 7.00pm  
Saturday 9.00am - 11.00am  
Sunday 10.00am - 11.00am  
Tel: 01954 210250

Unit 1 Pendrill Court, Ermine Street North  
Papworth Everard, Cambridge CB23 3UY  
Monday, Wednesday, Friday 11.30am - 1.30pm  
Saturday 12noon - 1.30pm  
Tel: 01480 831615

Laura Wood MA, VetMB, MRCVS  
Simon Shore MA, VETMB, MRCVS  
Dragan Tomovic BVSc, MRCVS  
Consultations by appointment only

# BA Building Services

**EXPERIENCED LOCAL BUILDER**

*For all your building requirements*

- All aspects of Brickwork
- Extensions
- Patios, Block Paving, Fencing
- Conservatories
- Porches, Doors & Windows
- Tiling
- Bathroom & Kitchens

**ALL ENQUIRIES WELCOME**

TEL 01954 232 241

MOBILE 07952 339 227

# G B Builders

NO JOB TOO SMALL

FOR ALL MAINTENANCE RENOVATIONS  
AND DIY WORK

All general building repairs & odd jobs  
Specialist in Painting & Decorating  
Groundwork & Grass cutting

- Fencing
- Brickwork & Plastering
- Plumbing
- Driveways, Paths, Patios
- Carpentry
- Slabbing
- Roofing
- Concreting
- Tiling
- Blockpaving
- Drainage
- Guttering

Call Today  
07877 742420  
Or 01480 437511  
g.builders@yahoo.co.uk



**Chartered  
Physiotherapist**

**Susannah Jennings BSc (Hons)  
MCSP, HCPC, MAACP**



Musculo-Skeletal Injuries:

- Back & Neck Pain
- Muscle & Joint Pain
- Rehabilitation after Surgery
- Postural Conditions (including Post & Ante Natal)
- Mobility Difficulties

Treatments Available:

- Joint Mobilisation & Manipulation
- Soft Tissue Massage and Stretching
- Acupuncture
- Mobility Assessments
- Electrotherapy
- 1:1 Clinical Pilates
- Rehabilitation Programs

31 Thistle Green, Swavesey, Cambridge. CB24 4RJ.  
Tel: 07970 548205

Email: [susie@swaveseyphysio.co.uk](mailto:susie@swaveseyphysio.co.uk)  
Web: [www.swaveseyphysio.co.uk](http://www.swaveseyphysio.co.uk)

# F.W. COOK FUNERAL SERVICE

49 Church Street Willingham

Tel Willingham 260325

Andrew Cook Dip FD Kay Cook Dip FD MBIE

A long established family business providing a personal 24 hour service

Golden Charter pre-payment funeral plans available

# COOK'S MEMORIALS

New memorials and refurbishments  
Brochures available on request



**Want to bring your outdoor  
living ideas to life?**

Push your driveway, garden & outdoor living area to its  
full potential with iScape Landscaping



Paving & Driveways



Decking & Fencing



Water Features



Hard Landscaping



Turfing & Lawn Care



Path & Patios

01954 202 232 | 07738 255 003  
[dan@iscapelandscapingcambs.co.uk](mailto:dan@iscapelandscapingcambs.co.uk)  
[iscapelandscapingcambs.co.uk](http://iscapelandscapingcambs.co.uk)

# A. R. CATER

Carpentry & Joinery

Established 1984



- KITCHENS •
- WARDROBES •
- CUPBOARDS •
- SECURITY LOCKS SUPPLIED & FITTED •
- COVINGS FITTED •
- UPVC FASCIAS, SOFFITS & GUTTERING •
- TILING TO KITCHENS & BATHROOMS •
- GENERAL PROPERTY MAINTENANCE •

*CALL TODAY FOR A  
"FREE ESTIMATE"*

**01954 - 232069**

OR

**MOBILE 07778 307578**

**IAN R NORMAN**  
HEATING AND PLUMBING



**Gas Boiler Servicing- Domestic & Commercial**

**Plumbing, Heating, Gas, LPG,  
Landlords Certificates**

Tel: 07827 938150 Email: [normanian@hotmail.co.uk](mailto:normanian@hotmail.co.uk)

**Cottenham based, covering all of South Cambs**



**DDB Home Solutions Limited**

Making your house a home

We are a company based in Needingworth specialising in kitchen and bathroom installations and can also supply the following services;

- Carpentry and Joinery
- Plumbing
- Electrical installation – Part P registered
- Floor and wall tiling
- Less-abled Bathrooms and Wet Rooms



We are a member of the Institute of Carpenters and also the Guild of Master Craftsmen with over twenty years experience

Visit our website for more information - [www.ddbhomesolutions.co.uk](http://www.ddbhomesolutions.co.uk)  
For an informal discussion or quote please contact Darren or Jo Turnbull  
Tel: 01480 495984, or email us at [Darren@ddbhomesolutions.co.uk](mailto:Darren@ddbhomesolutions.co.uk)



# Avenue

Property Management

## Quality Property Rental service

A local, personal & professional approach to all aspects of property management & letting

We provide a friendly & efficient service to Landlords and Tenants supported by 22 years' property experience

We look forward to hearing from you for an informal chat

Tel: 01223 353 353 or 01354 691 560

[enquiries@avenue-properties.co.uk](mailto:enquiries@avenue-properties.co.uk)



JK Reflections

restore:relax:renew

Massage

Facials

Relaxation techniques

Mindfulness

Tropic Ambassador – freshly made, vegan, cruelty-free, green skincare products. *Free Skincare consults in Swavesey/remotely.*

Website: [www.jkreflections.co.uk](http://www.jkreflections.co.uk)

Email: [jo@jkreflections.co.uk](mailto:jo@jkreflections.co.uk)

Phone: 07714 625243

Facebook: JK Reflections

Gift Vouchers & e-vouchers

Professional Arborists based in Swavesey, Cambridge. We offer a free, no obligation quote. Advice on any trees/hedges. Deal with any conservation area or Tree Preservation Order Applications. A freindly, efficient service, leaving your garden or land clean and tidy.

Tree Felling / Dismantling

Crown reduction / thin / lift / deadwood

Pruning / Planting

Hedge trimming / reducing / removal

Stump Grinding

Seasoned logs

NPTC Qualified Staff  
Full Liability Insurance



# DELLAR

TREE SERVICES

30A Thistle Green, Swavesey  
Cambridge CB24 4RJ

01487 740348 / 07703 568 474  
[dellartreeservices@hotmail.co.uk](mailto:dellartreeservices@hotmail.co.uk)

# R.A. Denton

## Painting & Decorating

*High Quality*



Industrial

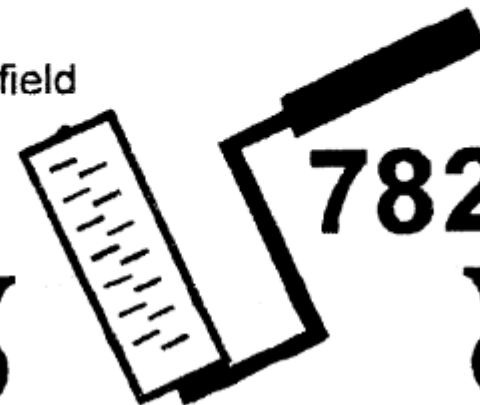
Commercial

Domestic



102, Stonefield  
Bar Hill  
Cambridge  
CB3 8TB

782472



# Put your love in writing

Be there for your family  
when they need you most

- ✓ Protect your children and partner with a Will
- ✓ Look after elderly parents with Lasting Powers of Attorney
- ✓ Set up a Trust for a disabled child
- ✓ Protect your family's property and assets
- ✓ Minimise care home fees and funeral costs
- ✓ Reduce Inheritance Tax and Probate fees

**Take  
action  
today!**

Call, email or text Just Wills  
for a FREE home consultation  
Phone: **01223 655646**  
Mobile: **07930 197432**  
[info@justwillscambridge.co.uk](mailto:info@justwillscambridge.co.uk)

Just Wills (Cambridge) is the local office of Just Wills & Legal Services Ltd. Since 1989 we've helped more than 150,000 families like yours plan for the future with our friendly, money-saving service and professional expertise. Call us for a chat and advice!

- Wills, Trust and Probate specialists
- Society of Trust and Estate Practitioners (STEP) qualified solicitors
- Backed by full professional indemnity insurance
- Member, The Society of Will Writers
- Member, Professional Association of Legal Services

**JUST WILLS**  
Just Wills (Cambridge) LLP

Just Wills (Cambridge)  
St John's Innovation Centre  
Cambridge CB4 0WS



*For all your building requirements,  
please contact Paul Hendry*

## **GEORGE HENDRY & SON** **Building Contractors**

33 Wallmans Lane, Swavesey  
Cambridge, CB24 4QY

Telephone: 01954 200613  
Mobile: 07778686791  
Email: [prh.ghs@gmail.com](mailto:prh.ghs@gmail.com)

**Eyes of Swavesey**  
Opticians



2 Station Road, Swavesey, Cambridgeshire, CB24 4DJ  
T 01954 231158 E [info@eyesofswavesey.co.uk](mailto:info@eyesofswavesey.co.uk)

Under new ownership.  
For all your eyecare & eyewear needs.  
Come to your local, friendly, professional  
& caring optician at Eyes of Swavesey.



# HIDDEN BEAUTY

BY REBECCA



NAILS | LASHES | WAXING | MASSAGE

Home based salon ready to offer you a range of lovely beauty treatments. Whether it's a relaxing, stress relieving massage or facial, some fabulous eye lash extensions, or a pampering manicure or pedicure, Hidden Beauty is here for you!

Message or call to book.  
20% off your first treatment

120 MIDDLE WATCH  
SWAVESEY  
07815443009  
BECCASTART@HOTMAIL.COM  
f HIDDENBEAUTYBYREBECCA  
i HIDDENBEAUTYBYREBECCA

## La' Mac

Hairdressing for all  
the family



- ◆ Friendly Service
- ◆ Traditional & up to date styling
- ◆ Fully trained in all colouring techniques
- ◆ Senior Citizens discount (Tue & Wed)
- ◆ Open Tuesday - Saturday (late 7.00pm Thursday)
- ◆ Wedding and Ball packages

We aim to provide a professional yet friendly atmosphere to make your visit as pleasant an experience as possible. So if you are thinking of a change please pop in and ask for Wendy, Charlotte or Estelle. They will be pleased to help

 **01954 231 445**    **2a Market Street**    **Swavesey**  
**Cambridgeshire**    **CB24 4QG**

# Swavesey Windmill

Hale Road Swavesey Cambridge CB24 4QP  
Tel: 01954 232 247

Fantastic function hall with licensed Bar available for hire for any event, set in the grounds of The Windmill.

Private parties, Fundraising  
Charity Nights, & Band Concerts!

Licensed with Cambridge County Council  
For Weddings, Civil Partnerships,  
& Baby Naming Ceremonies

To book to view or hire please phone Pam or Lisa.  
To keep updated on events follow  
Swavesey Windmill on Facebook





*Let me take care of your pet family!*

- FREE HOME DELIVERY
- Local Cambridge Business
- Quality Food at Direct Prices
- Pet Food Treats & Accessories
- All Ingredients Declared
- Gluten Free & Hypoallergenic Foods
- Let Me Deliver Your Cat Litter

*Hassle free!*






Call Teresa & Stuart  
your Cambridge Nutritional Advisors on  
01954 712633 / 07516184185

**OSCAR** *much more than pet food.* *you call i fetch!*

[www.oscar.co.uk](http://www.oscar.co.uk) Search  for Oscar Pet Foods Cambridge

Bayley - Lichfield Norman - Witney

**Local, family run business who thrive on transforming project dreams into a stunning reality!**

*Extensions – Conversions – New Builds – Groundworks – Bathrooms*

*Kitchens – Flooring – Electrical works – the list is endless!*

[www.ajcarpentry.co.uk](http://www.ajcarpentry.co.uk)

**07989 341724 / 07812 671495**

**\*Special Fees apply for readers\***



114-116 Regent Street, Cambridge, CB2 1DP Tel: 01223 462 013

There's a reason these signs are everywhere... ..we're serious about your property

**Call now for a free market appraisal**  
Tel: **01223 462013**  
Email: [cambridge@morrisarmitage.co.uk](mailto:cambridge@morrisarmitage.co.uk)

114-116 Regent Street, Cambridge, CB2 1DP Tel: 01223 462 013



The truly independent cruise & travel company  
01954 232 802 | [sales@ponderstravel.co.uk](mailto:sales@ponderstravel.co.uk)

The World of Travel is now in Over High Street.  
Ponders Travel opened a new Travel Agency in January 2019.

Opening hours  
Monday – Friday, 9.30am – 5.30pm  
Saturday, 9.30am – 4.00pm

Pop in and see our new shop at The Gallery, 25 High Street, Over  
Special Offers | Tailor Made holidays | 35 years' experience

Contact us today for more information  
01954 232802 | [sales@ponderstravel.co.uk](mailto:sales@ponderstravel.co.uk) | [www.ponderstravel.co.uk](http://www.ponderstravel.co.uk)

## Financial advice made personal

We recognise that talking about money and finances is personal – sometimes sensitive. So it's reassuring to know that there's someone on hand who can help you address your needs, understand your goals and realise your dreams.

We offer a friendly and approachable service, backed by the strength and security of FTSE 100 company, St. James's Place Wealth Management; and being local means we're here to help whenever you need us.

Please do get in touch for a chat.

TAIT FINANCIAL SERVICES LTD

Associate Partner Practice of St. James's Place Wealth Management

Tel: 01954 231768 | 07768 305151  
Email: james.tait@sjpp.co.uk  
www.taitfinancialservices.co.uk



The Partner Practice is an Appointed Representative of and represents only St. James's Place Wealth Management plc (which is authorised and regulated by the Financial Conduct Authority) for the purpose of advising solely on the group's wealth management products and services, more details of which are set out on the group's website www.sjpp.co.uk/products. The 'St. James's Place Partnership' and the titles 'Partner' and 'Partner Practice' are marketing terms used to describe St. James's Place representatives.

SJP11596 V1 (12/19)

Contact us:  
david@rosegatefarm.co.uk  
07922 588171



Rose and Crown Road Road, Swavesey

Butchery Open Fridays (8.30 am - 5.30 pm) & Saturdays (8.30 am - 1.30 pm)

[www.rosegatefarm.co.uk](http://www.rosegatefarm.co.uk)

Bespoke Butchery – butchered to suit your requirements

### BEEF

- Primarily from our own Hereford / Angus herd
- All at least 21-day aged

### LAMB

- Swavesey born and bred
- individual cuts, or ¼, ½ or whole lamb packs available

### PORK

- Bred & reared here at Rosegate Farm.
- Home-made sausages, dry-cured bacon and gammons (smoked and unsmoked)
- Cooked Ham

### CHICKEN (sourced from Diaper Poultry)

- Sutton Hoo Free Range
- St George Chicken

BBQ Meats – Burgers – Kebabs – Glazes

*See you in the butchery!*



## STEPHANIE'S CARE

Care and Support in your own home

Offering Compassion, Kindness Confidentially as well as Personnel Care to my clients

I am local so if you think I might be able to help you please contact me for an informal chat on the phone or in your home

Telephone: 01353 777 789  
Mobile: 07800 668 788

Qualified in Health & Social Care Level 3  
18 years extensive experience  
Fully Insured & Enhanced DBS Checked  
Reference's are available

## Rothwell's Carpet Cleaning

**Carpet, Stone Floor, Upholstery & Rug Cleaning**

*A few points that make us stand out,*

Rothwell's has been in business since 1993  
We're an honest local family firm.  
Our large truck mounted machines mean more cleaning & drying power for the best results possible.  
Members of both the NCCA and TACCA.  
We will move the furniture.  
100% satisfaction or it's FREE.

*Call Oliver and Max Campbell for expert help today.*

**01223 832 928**  
**www.Rothwells.biz**

# embe.

Professional, Local Painting And Decorating

embe\_pad @embepad 07931779042 mike@embe-pad.co.uk

[www.embe-pad.co.uk](http://www.embe-pad.co.uk)

## LIGHT REMOVALS

Small Houses to Single Items

ANY DISTANCE  
7 Days a Week

For a Free Quote

Telephone:

01480 352220

07711 556833

[www.cambslightremovals.com](http://www.cambslightremovals.com)

## Accountancy & Taxation Services



Tax Returns  
Business Accounts  
Bookkeeping  
VAT Returns  
Payroll  
Audits

L.A. Wells FCCA CTA

Chartered Certified Accountant, Chartered Tax Advisor

4 Scone  
Fenstanton  
Huntingdon  
Cambridgeshire  
PE28 9QG

Tel: 01480 466 197



[www.lwells.co.uk](http://www.lwells.co.uk)

## The Inside Outside

Bespoke Garden Rooms

Luxury garden rooms designed and  
built to your exact specifications

- Home office
- Home gym
- Hobby room
- Modern or traditional

Free consultation and  
friendly helpful advice



☎ 01954 201521  
07880 720377

📍 The Inside Outside  
✉ [paul@paulbramall.co.uk](mailto:paul@paulbramall.co.uk)



Total  
Relaxation  
at the farmhouse

Open 6 days a week

Tel: 01954 789 344

Aromatherapy, Body Massage, Indian Head Massage, Reflexology, Hot Stone Massage, Hopi Ear Candles, Facials, Nail Extensions, Manicures & Pedicure, Gel Polish, Lash and Brow Treatments, Waxing, Hairdressing

Gift vouchers always available

[www.total-relaxation.co.uk](http://www.total-relaxation.co.uk)

email: [total.relaxation@ntlworld.com](mailto:total.relaxation@ntlworld.com)

The Old Farmhouse, Gladeside, Bar Hill, Cambridge CB23 8DY

ARE YOUR WINDOWS  
READY FOR THE SUMMER ?

Give them a new lease of life with CST

NO CALL OUT CHARGES

All repairs carried out on UPVC,  
Aluminium or Timber Installations

- ▶ Windows, Doors, Conservatories
- ▶ Conservatory Roofs
- ▶ Misted or Broken Glass
- ▶ Broken Handles, Hinges and Locks
- ▶ Cat Flaps and Letter Plates
- ▶ Door panel fitting

C.S.T

DOUBLE GLAZING REPAIRS  
& Lock Maintenance

Tel: 01480 462 948

Mob: 07973 682562

[www.cstupvcrepair.co.uk](http://www.cstupvcrepair.co.uk)  
[cst.dgcrepairs@googlegmail.com](mailto:cst.dgcrepairs@googlegmail.com)

T.N. WALSH (AIP-RP)

PLUMBING & HEATING

5 ACORN AVENUE  
BAR HILL  
CAMBRIDGE  
CB23 8DT

TELEPHONE 01954 780252  
MOBILE 07887 561525



Reg. No.  
23354



026851 I

**Stamp Chiropody & Podiatry**  
**Casey Stamp MCPod BSc (Hons)**  
**HCPC registered CH15068**



- General chiropody – nails, hard skin & corns
- Diabetic foot care
- Children's Feet – Growing pains, Verrucas, etc.
- Sporty Feet & associated injuries + pains
- Ingrowing toe nails
- Custom made Orthotics/insoles
- Dancing feet – we'll keep you on your toes
- Biomechanics & Gait analysis

New Clients Always Welcome.

Find us at:

Willingham Medical Practice,  
 52 Long Lane, Willingham,  
 Cambridge, CB24 5LB

Tel: 01480 464507 or 07807505534

Also available at:

Salus Wellness Clinics  
 47 Norfolk St

Cambridge CB1 2LD

Tel: 07807 505534

[www.stamppodiatry.co.uk](http://www.stamppodiatry.co.uk)

**CHIMNEY SWEEP**  
**Cambridgeshire**  
**Trading Standards**  
**Approved**



- Fully Insured
- Enhanced CRB Check
- Certificates issued
- Bird nests removed
- All types of chimney swept
- No Mess, No Fuss



MAKE AN APPOINTMENT  
 TODAY WITH

**SWEEPOVER**

Tel: 01954 230777

Mob: 07779711458

[www.sweepover.co.uk](http://www.sweepover.co.uk)

19 New Road, Over, CB24 5PJ



The Ultimate  
**FLOOR SANDING**  
 Company

AFFILIATED SERVICE PROVIDER

**Dust Free**  
**Wood Floor Sanding**  
**& Restoration**

Is your Wooden Floor in need of  
 Sanding?

Call us today **01223 863 632**

Please quote "Swavesey Mag"

[www.floorsandingcambridge.co.uk](http://www.floorsandingcambridge.co.uk)

**Discover...**

A selection of beautiful individual villas & houses with pools in tranquil settings & areas of traditional local culture.

GREECE • SPAIN • LANZAROTE • BALEARICS  
 PORTUGAL • FRANCE • ITALY • CROATIA

**Vintage**  
 travel  
 Now in our 22nd year

Your Local Holiday Company

Call for a brochure or to speak to one of our specialists  
**01954 261431**  
 or visit our website [www.vintagetravel.co.uk](http://www.vintagetravel.co.uk)

ABTA No V0643

**Delicious**  
 & delivered

- FREE NATIONWIDE DELIVERY
- MEALS FROM ONLY £2.99
- OVER 300 TASTY RECIPES
- NO CONTRACT,  
 NO COMMITMENT

Call us for your **FREE** brochure  
**01371 876970**  
[wiltshirefarmfoods.com](http://wiltshirefarmfoods.com)

Wiltshire Farm Foods

# MAGAZINE ADVERTISING RATES

ADVERTISING RATES AS FROM JANUARY 2021.  
For a one year inclusion i.e. six issues.

Size	Advertiser	Magazine
Full page	£196	
Half page	£100	£143
Quarter page	£66	£88

The following rates are for one inclusion only and as a premium rate is already charged will be positioned in the magazine section:-

Half page one inclusion only £75

A small charge may be made for creating and amending artwork

For all advertising details please contact:

David Gedny Tel: 01954 231305 Mob: 079 022 40061 or

Email: [adverts@swaveseymeridian.org.uk](mailto:adverts@swaveseymeridian.org.uk)

## EXTRA MAGAZINES

Send a Meridian Magazine subscription to your favourite Auntie, or to a friend who has recently left the village.

Six issues (one year) costs only £12.00.

Send a cheque (made out to 'The Meridian Magazine') and the address of the recipient, to:

Jan Waller, Meridian Subscriptions,  
35 Carters Way, Swavesey, Cambridge, CB4 5RZ

## NOTIFICATION OF MAJOR EVENTS

Please use this form to notify us of any major events you are organising so that we can publish the dates in the magazine and on the website at [www.swaveseymeridian.org.uk](http://www.swaveseymeridian.org.uk). It is hoped this will avoid major events clashing on the same day. Please send to the Editor, 14 Black Horse Lane, Swavesey.

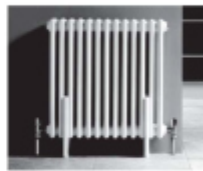
Event \_\_\_\_\_

Location \_\_\_\_\_ Date \_\_\_\_\_ Time \_\_\_\_\_

Contact Name \_\_\_\_\_ Tel No. \_\_\_\_\_



Plumbing and heating supplies  
to the trade and public



We are a local independent company supplying  
all your plumbing & heating needs, including:

**Bathroom Taps • Boilers • Bathroom Suites  
Underfloor Heating • Central Heating Radiators  
Heated Towel Rails • Showers • Kitchen Taps  
Sinks • Baths • Sanitaryware  
Plastic Plumbing Systems • Fittings**

*Do not hesitate to ring, email or visit...*

Unit 10, Norman Way Industrial Estate, Over, Cambridge CB24 5QE.  
Tel: 01954 230268. E-mail: [info@dandtsupplies.co.uk](mailto:info@dandtsupplies.co.uk). [www.dandtsupplies.co.uk](http://www.dandtsupplies.co.uk)

## BIRTHDAYS, ANNIVERSARIES & SPECIAL OCCASIONS

If you would like to mark any occasion that is special to you or somebody that you know by announcing it in this magazine, please fill in the form below.

Also supply your name and contact details, and return to the Editor by the copy date. We will endeavour to include it in our next issue.

### SHORT MESSAGE:

---



---



---

USEFUL TELEPHONE NUMBERS & WEBSITES		
Doctor's Surgery (Swavesey)	01954-230202	
Doctor's Surgery (Over)	01954-231550	
Police:		www.cambs.police.uk
Emergency	999	
All Non Emergency Calls	101	
Swavesey Neighbourhood Watch	07830 110062	www.swavesey.org.uk/neighbourhood-watch/
Swavesey Pre-school Enquires	01954 273312	preschool@swavesey.cambs.sch.uk
Swavesey Primary School	01954-273312	www.swavesey.cambs.sch.uk/
Swavesey Village College:	01954-230366	www.swaveseyvc.co.uk
Community Office	01954-230373	
Swavesey Post Office	01954-232311	
Cambridgeshire County Council:		www.cambridgeshire.gov.uk
General Enquiries	0345 045 5200	
Library Service	0345 045 5225	www.cambridgeshire.gov.uk/leisure/libraries
South Cambs District Council	0345 045 0500	www.scams.gov.uk
Electricity (UK Power Networks):		
Emergencies	0800-7838838	www.ukpowernetworks.co.uk
Gas Emergencies (National Grid)	0800-111999	www.nationalgrid.com/uk/gas
Water (Cambridge Water Company):	01223-706050	www.cambridge-water.co.uk
Sewage (Anglia Water) Emergency	08457 145145	www.anglianwater.co.uk
Environment Agency (Flood Line):	0845 988 1188	www.environment-agency.gov.uk
Incident Reporting Line (pollution etc)	0800 807060	
Samaritans	08457-909090	www.samaritans.org.uk
Addenbrooke's Hospital:		www.addenbrookes.org.uk
Accident & Emergency	01223-217118	
General	01223-245151	
Hinchingbrooke Hospital	01480-416416	www.hinchingbrooke.nhs.uk
NHS Direct	111	111.nhs.uk
Airports + Road & Rail:		
Local Taxi: Alpha Cars	01954 232300	www.alphacarsonline.co.uk
Gatwick	0844 3351802	www.gatwickairport.com
Heathrow	0844 3351801	www.heathrowairport.com
Luton	01582-405100	www.london-luton.co.uk
Stansted	0844 3351803	www.stanstedairport.com
Traveline (Bus Coach & Rail)	08706-082608	www.traveline.org.uk
Transport Direct (Coach, Rail, Flight)		www.transportdirect.info
Local Timetables:		
Cambridgeshire CC Bus Information		www.cambridgeshire.gov.uk/transport
Stagecoach	01223-423578	www.stagecoachbus.com
National Express Coaches	0871 7818178	www.nationalexpress.com
Whippet Coaches	01954-230011	www.go-whippet.co.uk
National Rail	08457-484950	www.nationalrail.co.uk
Veterinary Practices:		
Village Vet (Longstanton)	01954-780027	www.villagevet.co.uk
Ash Croft (Hardwick)	01954-210250	www.ashcroftvet.co.uk



**SWAVESEY LIBRARY is now open for browsing on Wednesday evenings 5 – 7pm and Saturday mornings 10 – 12 noon.**  
**All being well, Tuesday afternoon sessions will start from September.**

**The library continues to offer:**  
**Good quality books to borrow or buy**  
**SELECT & COLLECT \***  
**On-Line Reservation pick-ups**  
**Returns from any library**  
**Swavesey `Loan Service`\*\***

**\*The `Select & Collect` service is operated through the Cambridgeshire Library service, see website for details.**

**[https://cambridgeshire-self.achieveservice.com/service/Select and Collect](https://cambridgeshire-self.achieveservice.com/service/Select_and_Collect)**

**\*\*If you would like to use the `Swavesey Loan Service` please email/phone [Richard94.hart@virgin.net](mailto:Richard94.hart@virgin.net) / 01954 202707 or [Doughuntuk@yahoo.co.uk](mailto:Doughuntuk@yahoo.co.uk) / 01954 232478**

**Swavesey library can be found in the Old Entrance Hall, Swavesey Village College. It's entrance is at the right of the Gibraltar Road car park. Just follow the library signs.**

**We Are Finally Back!!**

**Swavesey RADSOC  
Proudly Presents Their  
2022 Pantomime of**

**Ali Baba**

**And the 40 Thieves!**

We are looking for new members  
to come join our friendly cast and crew  
For More information or to get involved  
contact us through our website

[www.swaveseyradsoc.org.uk](http://www.swaveseyradsoc.org.uk)

Or Find us on  
Facebook  
and Twitter

