

THE MERIDIAN SWAVESEY



No. 193 December/January 2022



Snowdrop Open Garden & Open Studio

**Date dependent on the weather –
to be announced later**

Priory House, Swavesey
(next to St Andrew's Church)

By kind permission of Mr & Mrs Jeremy Newsum

Donations to St Andrew's fabric fund

**Snowdrop plants
& refreshments
available in church**



EDITORIAL

As we approach the end of one year and the start of a new one let us hope life may get back to "normal" whatever that is now! We wish you all a Merry Christmas and Happy New Year!

If you feel you would like to be involved in the production of the magazine please contact the editor - be it helping with deliveries, finance, advertising etc.- thanks.

Computer skills are needed -everything seems to be "online" these days!

Safety- dark nights mean you need lights on your bicycle and also reflective clothing when you are walking, and also on your dogs collar. It is very disconcerting to suddenly see a dark shape loom in front of you on a narrow road and realise it is a person!

Be safe, be seen as the slogan once said!

Editor

Deadline for the Feb/March issue is the **20th December!**

Cover Image - St Andrews Church by Edwin Parish

Inside Front Cover - Snowdrop Walk

Inside Back Cover - Village Carols

Back Cover - RADSOC Ali Baba

IN THIS ISSUE ...

Editorial	page 1
Meridian Committee	page 2
Major Events List	page 2
Dates for your diary and forthcoming events	page 3
Club Reports	page 4-10
Miscellany	page 12-21
Medical News	page 22-24
School Information	page 25-29
Parish and County news	page 30-34
Churches	page 35-40
Community Groups & Charities table	page 41
Club Information	page 42-44
Advertiser	page 45-70
Extra Magazines, Major Events & Birthday forms	page 71
Useful Telephone Numbers	page 72

MERIDIAN COMMITTEE

Editor:	April Martin	Tel: 01954 200533
Treasurer	David Gedny	Tel: 01954 231305
Production:	Alan Morris	Tel: 01954 202664
Advertising:	David Gedny/Selwyn Richardson	Tel: 01954 231305 / 07902 240061
Distribution	Selwyn Richardson	Tel: 01954 202974
Subscriptions	Jan Waller	Tel: 01954 230795
Complaints	Maureen Hadfield	Tel: 01954 230414
Proofreading	Alison Lucas	Tel: 01954 232984
Website:	Alan Morris www.swaveseymeridian.org.uk	Tel: 01954 202664
Emails:	editor@swaveseymeridian.org.uk	
	adverts@swaveseymeridian.org.uk	
	webmaster@swaveseymeridian.org.uk	

Major Events List

This list is intended to avoid major events clashing on the same day. It will only work if we are advised of all such events, so please let us know as soon as you can confirm the details.

A form is available at the back of this magazine. We will list them in this section of the Magazine and also on our website at www.swaveseymeridian.org.uk

Sunday 19 December	Carols	Village Carols - from 5pm at Swavesey Primary School
Friday 28 January	RADSOC	Ali BaBa at Swavesey Village College - Tickets:- swaveseyradsoc.org.uk or 07504 522870
Saturday 29 January	RADSOC	Ali BaBa at Swavesey Village College - Tickets:- swaveseyradsoc.org.uk or 07504 522870
Sunday 30 January	RADSOC	Ali BaBa at Swavesey Village College - Tickets:- swaveseyradsoc.org.uk or 07504 522870

1

DATES FOR YOUR DIARY

1

December		
Thursday 2	Refuse Collection	Green & Blue Bins
Thursday 9	Refuse Collection	Black Bin Collection
Monday 13	Parish Council	PC Full Council Meeting, 7.30pm Memorial Hall
Thursday 16	Refuse Collection	Green & Blue Bins
Sunday 19	Carols	Village Carols - from 5pm at Swavesey Primary School
Thursday 23	Refuse Collection	Black Bin Collection
January		
Tuesday 4	Refuse Collection	Blue Bin Only (Note Tuesday)
Monday 10	Refuse Collection	Black Bin Collection (Note Monday)
Thursday 13	Parish Council	PC Planning Meeting, 7.30pm Memorial Hall
Saturday 15	Refuse Collection	Green & Blue Bins (Note Saturday)
Friday 21	Refuse Collection	Black Bin Collection (Note Friday)
Monday 24	Parish Council	PC Full Council Meeting, 7.30pm Memorial Hall
Friday 28	RADSOC	Ali BaBa at Swavesey Village College - Tickets:- swaveseyradsoc.org.uk or 07504 522870
Saturday 29	RADSOC	Ali BaBa at Swavesey Village College - Tickets:- swaveseyradsoc.org.uk or 07504 522870
Sunday 30	RADSOC	Ali BaBa at Swavesey Village College - Tickets:- swaveseyradsoc.org.uk or 07504 522870

CLUB REPORTS

A MERRY CHRISTMAS TO YOU ALL.

As we go to press the media has endless depressing news of how sad we will be with turkey-less Christmas dinners, just like WW2 they say. Don't you believe it, those old enough to remember it know none of us had even seen a turkey in those days except in Hollywood movies so that wouldn't have bothered anyone. Whatever turns up everyone will have a jolly good time we're sure.

Meanwhile, in spite of all the cautions still in place our club goes from strength to strength. We are meeting again in the College, but please note that to help the maintenance staff everything is moved forward half an hour ie. 7pm instead of 7:30, winding down about 8:45 to be clear of the building at 9pm.

Many plaudits to our technically brilliant members who have managed to set up a zoom contact so everyone can join in (how do they do that? Wow !). This is so helpful for those of us with immunity problems, just old, struggling to cope, the odd night when you have to be away from home, or even when it's your turn to put the kids to bed. We have members zooming in while touring Wales in a caravan, and several others birdwatching in Scotland. This zoom stuff is very useful. Never will be as good as face to face meetings, but it is great when it's pouring outside.

We have a long break when the College is closed for Christmas and New Year. There are just two competitions, the Joe Sipos Trophy for Colour prints is on Dec 9th, and on Jan 13th we have our next Set Subject, 'Metal'. These set subject competitions were devised to encourage us to get outside our comfort zones and try something new. The results can be astonishing.

We have three talks; the first on Dec 2nd is 'At the bottom of my garden' by Jayne Odell. Please note this is a Zoom talk, so everyone can join us by going on our website for details (fee £4). On 27th Jan we have 'Africa Dust Under My Feet' from the very well-known Naomi Saul. There is another talk to be announced for Jan 20th, so please check our website nearer the time.

Our celebrations might be a bit different this year with many of us at home. President's evening is usually when we are challenged by fiendishly devised games and puzzles provided by our leader, this year once again Simon. If on zoom bring your own drink and mince pies.

In the new year we have a Members evening, no topic announced yet, on Jan 6th.

Please keep checking the website in case of any changes and updates.

Mo Hadfield.

Swavesey Camera Club

www.swaveseycameraclub.co.uk

ALAN'S CARPETS

Carpets and Vinyl
Supplied and Fitted

We have been in the carpet trade
for over 47 Years!

Samples To Your Home

Measure

Quote

Express delivery & fitting included

Phone 07790 681317

or

07790 544250

What *will* happen to your family and estate after you die?

Assist Law has over 50 years' experience in
delivering high quality legal services.

Services very popular with our clients:

- Estate planning review: What *will* be left?
- Mitigating the cost of **care fees**
- Mitigating against **Inheritance Tax**
- Lasting Power of Attorney to protect **vulnerable family members**

For a no-obligation conversation, contact

Estate Planner, Ed Bristow

Telephone or text: 07786061457

or email: edwinbristow@assistlaw.co.uk



Assist
Law



Limited
SPECIAL OFFER:
£79 per Will
Normally £135!

Ensuring
continuity of service
to its members' clients

CHIMNEY SWEEP

J. L. Wight

City & Guilds Qualified

Advice given /
Problems solved



Certificates issued

Fully Insured



HETAS registered

01954 253315

www.camsweep.co.uk

26 Cow Lane, Rampton

R. A. Miller

Plumbing and Domestic Heating

Fenside, 71 Willingham Road, Over
Cambridge CB24 5PE

Tel: 01954 203277 Mob: 07831 853885

Email: robert.miller@ntlworld.com

All plumbing work undertaken

- » New boiler replacement and installation with free quotation.
- » GAS boiler and GAS fire servicing
Landlord Certificates.
- » Heating problems - Diagnosis
and rectification.
- » General plumbing - taps, washers,
pipework, showers, etc.
- » Full and partial Bathroom installation work.

For a reliable and professional service

Robert Miller MCIPHE RP



Office 01954 203 277
Mobile 07831 853 885



FDS

(CAMBRIDGE) LTD

01353 779754

fdssales@outlook.com

www.fdscambridgeltd.co.uk



GRAB/TIPPER HIRE



AGGREGATE SUPPLIES



PLANT HIRE

PRIVATE AND TRADE WELCOME

SOILS – SANDS – GRAVELS – SLEEPERS

HARDCORE – DIGGERS – DUMPERS

DOZERS - FORKLIFTS

CALL US ON 01351 779754 or 07921 777550



FDS Cambridge LTD



fds_grabhire

Swavesey WI

In September we held our AGM which was very well attended by members and new members. President Linda Saunders reported that our WI had thrived in many ways through the recent lockdowns. We kept in touch with our members through regular newsletters, phone calls, meeting for coffee on Market Street Green and we established a Walking Group for members and any ladies in our community who wish to walk safely in a group.

President Linda stepped down from office at the AGM. She was presented with a beautiful bouquet in appreciation of her time, efforts and friendship. Linda thanked the committee and members for their support and friendship and wished Swavesey WI all the very best for the future. Margaret Guest was duly elected our new President and she said she is looking forward to the year ahead.

Sad news.....Kathleen Clewlow, a past Swavesey WI member, recently passed away. Kathleen enjoyed many years as a loyal member and held various offices in our WI over the years. We have very fond memories of Kathleen, who was a friend to all.

Our programme for December 13th meeting is "Festive Desert Island Discs".

For further information on our Walking Groups, please ring Clare Fox 01954 202882.

We serve Coffee and delicious homemade cakes at the Compass Cafe on the second Thursday of the month.

We meet in the Memorial Hall, Swavesey on the second Monday every month at 7.30pm.

All women are welcome. Joining WI is a great way to make new friends. If you would like more information on anything we do, please ring:- Margaret Guest 01954 202757/Deirdre Burgess 01954 230897.

Swavesey Festival 100 Club

Three winners each month receive £60 or £30 or £15.

To be added to the waiting list to take part in this popular competition phone Gill Hurst on 01954 200470.

Latest winners are:-



	£	September 2021	October 2021
First prize	60	Sue Rodgers	Ena Keerie
Second prize	30	Amanda Monk	Colin Start
Third prize	15	Hannah Parish	Bob Wick

A season finishes and new one begins

Although many of us have winter crops such as leeks, brassicas and parsnips, autumn always feels like the start of another year on the allotment. Paying our plot rental, preparing ground for next year, planting garlic and broad beans and perusing seed catalogues for next year.

Another good response from the village at the produce sale has meant that we were able to ship in a good quantity of soil improver which the members have been attacking enthusiastically. Now is also the right time to spread cattle manure as it takes time to break down and over the winter, worms and weather will do the work.

This summer seems to have been the reverse of last year with crops that didn't do well in 2020 thriving this year and vice versa. We will eagerly look forward to what will happen next year.

By the time this appears we hope to have held a successful quiz and AGM. We had to limit the quiz numbers due to Covid capacity rules and there was a reserve list, hopefully we can increase the participants next year.

In October it was 9 years since we opened the allotment site and next year we celebrate our 10th anniversary, what form that celebration will take is to be decided by the new committee. On a quick count I have estimated that just under 50% of the original members are still beavering away, although some plots have had multiple occupants so turnover is most probably running at about 7% annually. At the autumn weed walk the site was looking well maintained and we have a healthy waiting list so the quicker you put your name down the sooner you'll be offered a plot. The waiting list is still 1-2 years and contact details are in the club section.

Russell
Chairman (Hale Road Allotments)

The Over Players concert - Songs from the Shows

With all the uncertainty around, we made the tough decision not to produce a pantomime this year. However, not wanting to be beaten, we decided instead to put on a concert of popular songs from some of the big musicals we have performed over the years such as Fiddler on the Roof, My Fair Lady, Me and My Girl and The Sound of Music. There will be ample space around the hall and further measures will be put in place to ensure our audience's safety.

We would love to have you join us!

Friday 26th November and Saturday 27th November 2021

Start time: 8.00pm

Venue: The Community Centre, Over

Ticket price: £6.00 per ticket

For tickets please visit www.overplayers.uk

Box Office opens 1st October 2021

Swavesey & District History Society

September meeting. On a pleasant evening with some Covid 19 restrictions in place, including doors and windows thrown wide open for ventilation, 30 members attended the first talk since February 2020 entitled "The Railway Through Swavesey" by Roy Stoner. Roy, who is a Swavesey resident, used a combination of old photos and video footage to take us on a journey from Cambridge to St Ives.

Surprisingly, the main reason for building the line was coal. By the mid-1800s moving coal from Yorkshire coalfields to southern counties was a lucrative activity for the railways and Great Eastern Railway wanted to supply London via Cambridge. To achieve this a line was built across The Fens from March (which was already linked to Wisbech) to St Ives and on to Cambridge via Swavesey where the station was opened on 17 August 1847. Starting as a single track line, it was immediately very successful and a second track was built alongside in 1851. The railway was extended westwards to Huntingdon, Thrapston and Kettering on 1 March 1866. The majority of traffic through Swavesey was freight, dominated by lengthy and slow-moving coal trains, the line being busy all night. However, enormous amounts of local fruit and vegetables were also carried to markets as far away as London, Birmingham and Manchester with cucumbers, asparagus and celery moved on faster trains. The goods yards in Swavesey and Longstanton were particularly busy during fruit harvesting time. Hay for horses and milk were taken to Cambridge with return loads of granite for road making. Conversely, passenger traffic was always light as only small market towns and villages were served and with the post war popularity of the car, passenger numbers began dropping through the 1950s.

After the line was closed to passengers on 5 October 1970 it continued to be used to haul in large quantities of soft fruit for jam making by Chivers at Histon until 1983 and ARC carried on transporting sand from Fen Drayton down to Kings Cross as a major building material until May 1992. The Cambridgeshire Guided Busway to St Ives opened along the railway track on 7 August 2011.

October meeting. Dr Ken Sneath's talk entitled "The Singing Milkmaids" made no mention of milkmaids and neither was there any singing. Instead, it dealt with life in post-restoration Huntingdonshire, concentrating on population explosion throughout England compared with Hunts and the consequent importance of feeding the increasing population. England's population at the time of the Domesday Book in 1086 was about 2.0 million and this had increased markedly to around 6.0 million by 1300. However, the Black Death first arrived in England in 1348 with a further major outbreak in the 1360s and this pandemic reduced the population by 50% with the most devastating effect among the agricultural labour force. In 1541 it was still down at 2.8 million and even by 1741 it had only risen to 5.5 million. Thus, it took nearly 500 years to return to the pre-Black Death level.

The agricultural revolution refers to changes in agriculture between about 1760 and 1830. It was mainly influenced by i) land enclosure which replaced the open field system, ii) movement of labour from the countryside to industrial towns, iii) improved crop mechanisation, iv) improved crop rotation and v) improvements in livestock husbandry. Statistics were presented from a range of sources to illustrate how agricultural production kept pace with population increase and mobility, including some detail from Swavesey.

A birding annual review

The closing of the year presents a good time to summarise the wildlife goings-on that have taken place over the past 12 months. Overall, it has been an exciting year; however varied water levels posed a challenge for some species to overcome.

Early winter flooding meant the reserve effectively became one giant lake. The ducks were having a great time with large numbers of wigeon, tufted duck, pintail, shoveler and goldeneye counted. Wading birds that like shallow water struggled to find higher ground, but the few areas that were suitable resulted in large counts of black-tailed godwits and lapwing, amongst others.

Fluctuating water levels are not good for species which nest close to the water, as proved to be the case when spring flooding in April resulted in many of the nesting islands for gulls, waders and terns being washed out. It was really fraught to watch the birds trying to build up their nests with twigs so that their eggs remained out of the water. Most couldn't do it in time, but a few managed to build up their nests over a foot higher. Once the water receded somewhat, these birds were sat proud on towering nests.

Our reedbeds are managed with the hope of scarce breeding birds using them. This year, a pair of bittern were observed to be likely breeding on site. Although we often hear a territorial male in the spring, this is the first time we recorded nesting evidence. Bearded tits are also likely to have nested on site for the first time after sightings of a family group with youngsters were reported. These are both good signs that the work we carry out in the reedbed is working and that it is in the right condition with habitat and food availability for our target birds.

Nightingales hadn't been heard on the reserve for a few years, but following habitat work that we have carried out over the past two winters, we were overjoyed to hear two males singing their wonderful lyrical song from deep within an area of scrub in the spring. A female was later seen with one of the males, suggesting breeding may have taken place.



Turtle Dove at the orchard – Henry Cook

Our other headline species is the turtle dove and surveys revealed up to five singing birds around the reserve. They went quiet after a while, but we confirmed breeding for at least one pair with a family group seen in August.

Following the breeding season, the reserve sees an annual build-up of mute swans which come here to moult their wing feathers. During this time, they are flightless and need large waterbodies to feel safe on. The counts achieved by our volunteers were huge with 233 counted in June.

Going into the winter months a murmuration began. Black silhouettes appeared en-masse in the sky before the setting sun. They wheel around and create wonderous shapes. These are made by starlings which fly into the reedbed to roost. We are lucky that most years they visit, but their presence is never guaranteed. A fitting finale to the year.



Starling murmuration at Fen Drayton Lakes – Gill Parish

Visit rspb.org.uk/fendraytonlakes

The Royal Society for the Protection of Birds (RSPB) is a registered charity: England and Wales no. 207076, Scotland no. SC037654

Visit our truly stunning display gardens ...



Probably the largest display centre in the UK, selling directly to trade and the general public

Bannold are one of the UK's largest independent suppliers of natural hard landscaping materials. We stock natural products sourced directly from the UK and around the world enabling Bannold to offer premium products at the most competitive rates to trade and the general public.

- Natural Paving • Setts and Paviours • Stone Walling
- Decorative Gravels • Rockery • Boulders • Waterfeatures
- Topsoils • Soil Improvers • Bark Mulches • Sands
- Hardcore and Cements



Capability Barns
 Huntingdon Road
 Fen Drayton
 Cambridge CB24 4SD

Freephone: 0500 012231
 or 01954 231666

Opening Times:
 Mon-Fri 07.30 till 5.00
 Saturdays 09.00 till 1.00

www.bannold.co.uk



MISCELLANY

Swavesey 100 Years ago (Dec 1921 & Jan 1922)

From the Cambridge Chronicle

HAPPENINGS IN THE FOG. 2nd Dec. 1921. Several mishaps, none, fortunately, of a serious nature, occurred in the thick fog which enveloped Swavesey on Saturday night. Two youthful cyclists attempting, when near the school, to get out of one another's way, came into collision, and both narrowly escaped a ducking in the adjacent pond. Both youths were shaken by falling, and one went home with a bleeding nose and damaged machine. A farmer who had been visiting relatives at Church End had some difficulty in finding his bicycle, which he had left outside the house, and while groping for the machine struck his head with considerable violence against a brick wall, sustaining a cut face and nose. Earlier in the evening a party set out gaily for an evening's entertainment in Cambridge but did not get far before they found themselves in the chapel pond. The driver refused to go any further, and so they went back home.

FOOTBALL. 9th Dec. 1921. **SWAVESSEY v. ELSWORTH.** Played at Swavesey on December 3rd. Result was a win for Elsworth by 2 goals to 1. Oakman scored the goal for Swavesey.

HOCKEY. 9th Dec. 1921. The Willingham Ladies' Hockey Club visited Swavesey on Saturday, and after a well-fought game came out winners to the score of 4 – 2. The play throughout was fast and evenly contested, the score at half-time reading two goals each.

ADVERTS. 16th Dec. 1921. No need to travel far to procure your requirements for Christmas this year, as we can supply most if not quite all. We specialise in Grapes, Oranges, Dates, Figs, Muscatels, etc. Games, Bon-Bons, Toys, Christmas Stockings, Cakes, Chocolates, etc. Special offer to the men: A New Cap, Tie, Soft Collar and Wool Socks for 5s. 6d. Don't forget Crestona Ginger Wine, at 1s. bottle, makes 75 glasses. – Canham's Stores.

CHRISTMAS CHEER. – Kind orders solicited. Fine Bunchey Grapes, Denia Oranges, Mixed Nuts, Figs, Dates, Metz Fruits, Biscuits, Chocolate Biscuits, Fch. Plums. Best Genoa and Cherry Cake. Toys, Games, Picture books, in variety. **AGENTS FOR CARTER'S TESTED SEEDS.** Catalogues free **EARLY IN NEW YEAR.** – Aldred's, Swavesey.

CHRISTMAS POSTAL ARRANGEMENTS. 23rd Dec. 1921. The following are the special arrangements which will be in force in Swavesey during Christmastide: – Christmas Day (Sunday), Post Office open from 8.30 to 10 a.m. One delivery of letters and parcels, and one despatch at 1 p.m. Boxing Day, 26th December, office open from 9.30 to 11 a.m. No delivery or despatch of mails. Bank Holiday, 27th December, office open from 9.30 to 11 a.m. One delivery in morning and one despatch at 10.45 a.m. A special mail will be made up at 5.45 to-day (Friday) and to-morrow (Saturday).

SUPPER. 30th Dec. 1921. The first annual supper of the Rising Sun Sick and Share-Out Club was held at the National School on Thursday evening in last week, and was attended by a full muster of members. An excellent repast was provided by Mr. and Mrs. T. C. Heasman, of the Rising Sun Inn. Mr. Albert Payne, who presided, proposed

a vote of thanks to the host and hostess, which was seconded by Mr. James Culpin. Mr. Heasman, in responding, announced that the club would start again on Saturday, January 7th. The rest of the evening was spent in social enjoyment and songs were sung by Messrs. S. Badcock, C. Wood, F. Brickwood, Giddings and E. Oakman, while Mr. Wood recited and Mr. Badcock presided at the piano.

THE GALE. 6th Jan. 1922. During last week's gales poultry houses recently erected in the gardens of the new Council houses suffered disaster. One collapsed entirely, while another, which faced in one direction at night, was discovered next morning to be facing exactly the opposite way. Fortunately, the poultry escaped injury. Sheets of corrugated iron forming the roof of a builder's shed were carried a considerable distance by the wind to different parts of the gardens, and a long iron bath put out to catch rain-water once travelled many yards until its mad career was stopped by the entrance gate, and a later disappearance led to its discovery in a ditch. A respected householder at Boxworth End lost his headgear one dark, blustery night, when on his way to a card party at a friend's house. Having searched in all directions without success, he groped his way to his friend's residence for assistance and a lamp. But so intense was the darkness that he could not find the house, and for a time wandered aimlessly, but probably not painlessly, amongst outbuildings, until at long last he found himself in one, some of the contents of which he recognised, and was able to take his bearings. With the aid of his host and a flash lamp, the hat was recovered, and the party settled down to a quiet rubber.

HOCKEY. 13th Jan. 1922. The Swavesey mixed eleven were at home to the St. Ives "Incogniti" holiday team on Tuesday, when, after a fast and enjoyable game, the home team were beaten by six goals to four.

SCHOOL CLOSED. 20th Jan. 1922. Owing to the prevalence of illness, the National School has been closed temporarily. On Thursday in last week no less than 40 children and two teachers were absent.

ENTERTAINMENT. 20th Jan. 1922. The concert arranged by Mr. Nigel Wilson, in aid of the Church Roof Repair Fund on Friday evening, was held under rather trying circumstances, as owing to the prevailing influenza epidemic both performers and audience were much reduced in numbers. However, those who did attend listened to a most enjoyable programme, several hearty encores being responded to. The following ladies and gentlemen took part: Miss C. Goad, Mr. R. Barwell, Mr. N. Wilson, Mr. E. Papworth, Mr. H. Topham and Mr. P. Ding. Mesdames Barwell, Ashby and Papworth kindly acted as accompanists.

SNOWSTORM. 20th Jan. 1922. About three o'clock on Sunday afternoon snow began to fall, and by Monday morning the land was covered to the depth of four inches, or thereabouts. The County Council snow plough was brought into use with commendable promptitude, and early on Monday the main road through the village was cleared for vehicular traffic. The accumulation of snow on the roof of the Parish church wrought havoc inside the building when a thaw set in on Monday; and if there are any people in Swavesey who have any doubt as to the urgent need for the repair of the roof, they would probably have had those doubts removed if they had paid a visit to their ancient church on Monday afternoon. Snow water had penetrated in copious showers through the old timbers of the roof, and had deluged the floor beneath and the seats, with their hassocks, cushions, books, etc. If the leakage had occurred during Sunday night's service a considerable portion of the congregation would have had to beat a hasty retreat, in order to escape a shower bath.

Chris Richardson



Now Open 7 Days a Week

Your new local landlords Jonny & Joe are delighted to be able to welcome you all back to The White Horse Inn, now open 7 days a week for grub & grog!

Our Head Chef Chris has created an awe-inspiring menu for you, infused with his own unique flair; from authentic home-made pizzas to full Sunday roasts - The White Horse has you covered.



OPENING HOURS	
Monday	12pm - 11pm
Tuesday	12pm - 11pm
Wednesday	12pm - 11pm
Thursday	12pm - 11pm
Friday	12pm - 12am
Saturday	12pm - 12am
Sunday	12pm - 10pm

Your Local - Back in Your Hands
 Tel. 01954 231665  /whitehorseswavesey

Do you remember Young Farmer's Clubs?

By Sue Ellington

Young Farmer's Clubs were very popular when I was growing up in the 50s and 60s. Many of the villages around had their own clubs which were affiliated to the West Anglia Federation. I joined Swavesey Young Farmers Club when I was about 13 but Martin, my brother, had been a prominent member for several years before - I suspect he was not happy to have little sister joining!

We met monthly in the Village College and enjoyed talks about agriculture, ecology and household crafts. You were allowed to be a young farmer until you were 27 so we had quite a wide range of members from 12-27 of both sexes. It was frequently described as the marriage bureau! But young farmers was a lot more than just an opportunity to socialise. There were many inter club competitions and I learned many skills which stood me in good stead in adult life.

The public speaking competition included 4 members - a speaker, a chairman a proposer of thanks and a seconded of thanks. You had to give a talk for 10 minutes if you were speaker and two members of another team had to ask you two questions, the proposer of thanks and seconded had to make a little off the cuff speech thanking you for the talk and the chairman had to manage the event. I remember being very nervous but Swavesey won on many occasions and it taught me to "stand up, speak up and listen".

We had a lot of dances - usually country dancing - if you couldn't do "the St Bernards Waltz" or "strip the willow" you hadn't lived! Very lively and very good fun. I think young people miss out on so much now.

In the spring of 1963 after the worst winter anybody could remember I was asked by the county organiser Daphne Allen, if I would be part of a play production to be performed at the Hunts Show. I agreed and she said that a young man from Cottenham club would come and pick me up to take me to rehearsals. He was to play my husband in the show and turned up in a Vanguard Estate car. Well you can guess the rest - David and I married in 1967. The show was good too, but I had to join Cottenham Club for the rest of my membership.

In 1970, The national associate arranged an exchange trip to the states and David was keen to go - we had Debbie De Long to stay with us for 2 weeks and David went to her parents farm in Upper New York State. It was a great experience for all of us - Debbie and her parents are still friends and we have visited each other several times since.

Some of you will remember The annual Young Farmers club rally which ran at John Burgess's farm in 1972. The Rally was the highlight of the year and we all went to classes to learn how to judge livestock, as well as entering for competitions for dressmaking, cooking and tractor driving. David was chairman of the organising committee that year so we got involved in significant organisational management. It was a great event and the sun shone. We made £600 profit, the first time it hadn't made a loss.

I have a lot to thank Young Farmers for as well as a husband for 40 years, I gained confidence, skills and many lifelong friends.



**BECOME A
TUTOR!**

**Tutors needed: All subjects and ages
Tutor Doctor Cambridge
01223 430432
www.tutordocor.co.uk/cambridge**

**CHIROPODIST/
PODIATRIST**

I can offer a professional service
in your own home.

For further details please ring
01954 201256

Biomechanical assessments &
orthotic therapy also available.

Michelle Dolan
HCPC Registered Chiroprapist/Podiatrist
CH34864

e-mail: michelledolan@outlook.com

Memories by Will Wright

My parents told me we were going back to London for a short stay with my grandparents in the early summer of '53, just a few weeks before I was due to enter the education system at the primary school. I seem to remember kind of looking forward to going to the local school & meeting lots of other children of the village, a few of whom I had already met but the thought of going back to our capital city again just took over as it was a completely different world to me, underground trains, double decker buses and so much to see.

I was confused to see lots of soldiers marching around on the roads in the Kensington area next to Earls Court were we were staying and the streets were being decorated with thousands of flags. It was a couple of days before I was told we were there for the Coronation of our Queen and it turned out that Grandad had arranged for us to be down the Mall of all places for the major procession.

On the day we got a bus early & I can remember having a small hand held Union Jack flag & when asked by the conductor where I was going apparently I told him we were off to see the Queen! Well we had a great place down the Mall, don't know how Grandad fixed it but later found out he had been working on the North Thames Gas board since the end of World War 1, so maybe that opened a door or two, after all it's more who you know than what you know in our society.

The crowd had built up incredibly when there was an hilarious moment as a dust cart wagon made it's way along the Mall towards Buck House to the applause of thousands. This was immediately followed by a series of enormous explosions just behind us in Green Park which scared the living daylight out of me, and a few others, as we weren't prepared to be so close to a Cannon fire gun salute, which signalled the start of the procession which absolutely captivated me and probably all those watching. One thing this country can do is to arrange pomp & splendour in a traditional manner. I can vividly remember a large elderly lady waving at us from one of the carriages and was later told it was the Queen of Tonga who seemed to be a real character. What a day for all especially a young Swavesey boy.

The next couple of days included a trip to the Zoo from which I still have a photo of me on a Jumbo - "I on a Dumbo" and of course a " 2 & a 1/2 to Putney mate" trip at the top of a double decker but before long it was time to make the return journey back to the reality of life & prepare myself for starting school.

My Mum walked me there & back for the first week or so but it wasn't long before I was going on my own as there were always other children to meet up with for the journey there & back, and we soon got to know each other. I remember being in Miss Palash's class for the first year or maybe two, the headmaster at the time was "Buck" Jones who I think lived in one of the large houses at the Rose & Crown junction with Boxworth End.

I received a small 2 wheel bicycle for my birthday and Dad taught me how to ride it as he was running behind it with one hand on the rear of the saddle and this took place at the top of Ramper road, where the bungalows now are. Just goes to show how times have changed when you consider at times it is now almost impossible to cross the road there now given the constant traffic flows!

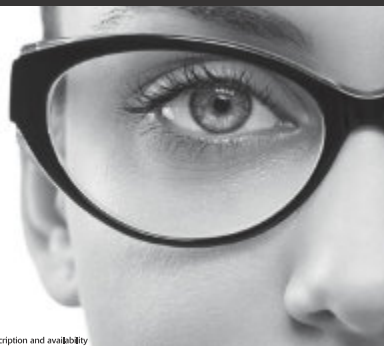
I remember being awoken one night by the sound of jet engines which were getting louder & louder as it passed over the house before there was one almighty frightening KERRRASH as the plane hit the deck. It turned out that it was a twin engine Meteor jet fighter on its way back to the RAF Oakington base, which had come down in the field between the Z bend on Ramper rd - Willow Tree bend as it was I believe & Uttons drain. Sadly none of the crew survived the crash.

Paying too much for your glasses?

Save Money - Buy Direct!

Visit our factory shop to see our fabulous range of Discount Prescription Eyewear

- Hundreds of frames to choose from, including designer frames from Ray-Ban, Polo Ralph Lauren, Oakley, PRADA, Ted Baker and Versace
- Specialists in high and complex prescriptions
- Same-day or next-day service available*
- Save up to 75%
- Huge range of designer sunglasses
- Full range of sports eyewear



Official stockists

* subject to prescription and availability



We are open 9am to 5pm Monday to Friday, and 9am to 1pm Saturday



Call us **01954 231545** Visit our website **www.all-eyes.co.uk**
20 Norman Way Industrial Park, Over, Cambridge CB24 5QE

Surrounded by Water – Almost

Part 7. Sewage: More serious concerns.

The Oct/Nov 2021 Meridian (pp 10/11) drew attention to a massive increase in foul water loading planned for Utton's Drove sewage works. This potentially increases the risk from four serious problems which already threaten Swavesey.

1). Minimal gradient. The sewage works at the southern end of Utton's Drove is at 13m Above Ordnance Datum and the treated water travels 6¼ km to the Great Ouse at Webb's Hole sluice, which is at 4m AOD, a gradient of only 1 in 700 which is close to completely flat. Each bucketful of water only moves on because it is being nudged by the bucketful behind, potentially causing leisurely accumulation in Swavesey's fens.

2). Improving the flow. Utton's Drove drain receives water from a large area of agricultural land south of the A14 around Boxworth, Lolworth, Childerley and Bar Hill and during periods of extremely heavy rainfall, such as in August 2014, it overflows into Utton's Drove and into adjacent farmland. The first 40% length of the watercourse north from the sewage works is managed by South Cambs District Council and the remainder is managed by the EA to the river. To improve conveyance (the rate at which water flows along a watercourse) would require widening the channel which would be technically difficult to do along some stretches and both responsible bodies, with limited resources, would undoubtedly take a dim view of the inevitably enormous cost.

3). If Webb's Hole Sluice doors close. The Great Ouse, flowing from west to east, brings in a very large volume of water from Buckinghamshire, Bedfordshire and Northamptonshire and due to the enormous size of its catchment, water levels can rise and fall slowly. At an upper threshold water depth level, the doors at Webb's Hole sluice close to prevent river water flowing back inland along Swavesey Drain and flooding the village. With no outlet the water coming down Swavesey Drain towards the river overtops adjacent to the sluice and floods into Middle Fen. While the doors remain closed the flooding sequentially inundates Middle Fen and Mow Fen then Mare Fen and finally flows across Over Road, as it did in early January 2003, and falls into the lower level in Cow Fen. If Cow Fen floods seriously, a significant area of housing in the village is at risk.

4). More water in our fens. It is not unusual for the sluice doors to be closed for up to two weeks during periods of prolonged wet weather and occasionally three. In Jan/Feb 2021 many residents commented on the very widespread and deep fenland flooding north of the village during the most recent winter and this was caused by the doors being closed for 3 weeks, open for 1 week then closed again for 4 weeks. In future, with a markedly increased volume of treated water from Utton's Drove sewage works entering the system along Utton's Drove drain which leads into Swavesey Drain, the flood risk to the village too will increase.

It could get even worse: there has been early mention of a possible business park covering many hectares being developed in the Slate Hall Farm area (on the left between Bar Hill and the road to Oakington) and it is believed the buffer strip between Longstanton and the guided busway will also be put forward for residential development, with sewage from both sites directed to Utton's Drove.

Furthermore, if East West Rail goes ahead and the option of building a station at Cambourne north is chosen, there is a preliminary proposal already in to build 10,000 houses nearby within the parish of Knapwell. Guess where the sewage is likely to be directed to for treatment.

It might even get far worse: the former Highways England/A14 works accommodation site, south of the A14 Swavesey Services, is being promoted by a developer for a 16 ha (39 acre) commercial development site wrapped in an "L" shape around Swavesey Services www.commercialnewsmedia.com/archives/115034. If an application should be submitted, the vast amount of surface water from roofs, roads and hard standing along with associated foul water treatment at Utton's Drove could have a major impact on the Swavesey fens open drainage system.

Could it be done differently? Well as long ago as 2006-8 Northstowe developers firmly refused to have a new sewage works in their back yard when Utton's Drove was deemed close enough. So, AW investigated the viability of pumping the treated effluent through a pipeline from Utton's Drove direct to the river instead of putting it into the open drainage system, which would have removed the problem Swavesey now faces, but the additional £11 million cost ruled that out.

This unfolding situation is what is known in the complicated, modern technical jargon of advisory hydrologists as "a right cock-up". Be assured that Swavesey Parish Council is earnestly and aggressively fighting against bureaucracy on this sewage issue.



SUMMIT

LANDSCAPES

PAVING - DRIVEWAYS - BRICKWORK
CARPENTRY - GROUNDWORKS

www.landscapingpaving.co.uk
PHONE: 01223-929394

It Will Probably Be Cloudy...

A guide to the night sky over Swavesey during December and January.

The long winter nights provide some of the clearest night skies due to less turbulence in the atmosphere, but the trade-off is that it can be very cold to stand outside and look up!



December and January provide the opportunity to observe three meteor showers, these being the Geminids meteor shower, the Ursids meteor shower and Quadrantids meteor shower.

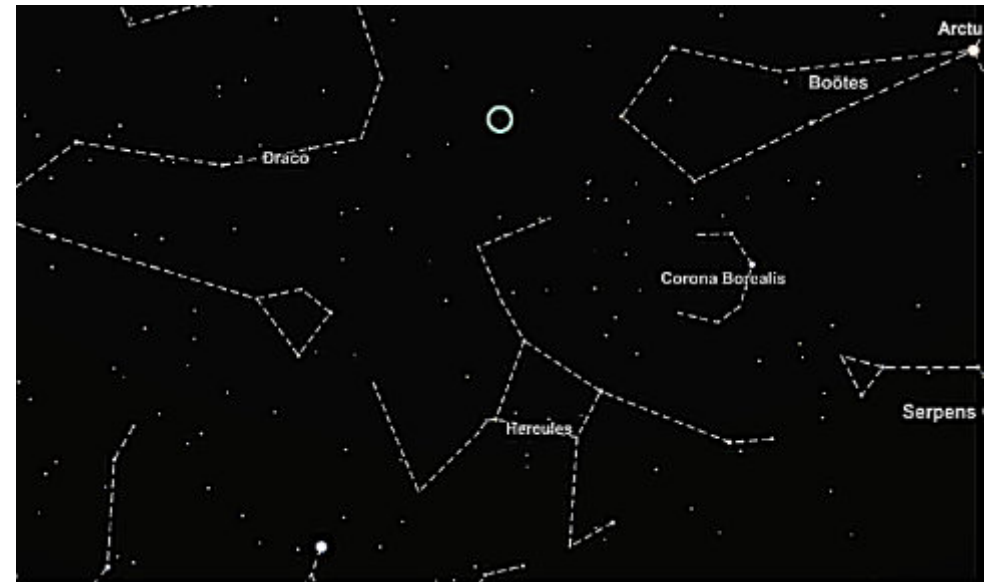
The Geminids is magnificent meteor shower. The shower owes its name to the constellation Gemini because the meteors seem to emerge from this

constellation in the sky and is active between 4th and 20th December. With the highest average rate of the year, around 120 meteors per hour, this is one to watch out for! Peaking on the night of 13 December, this is one of a few showers produced by the debris from an asteroid rather than a comet. The materials these meteors are made of work like fireworks, producing surprisingly strongly coloured bursts of light, an excellent way to end the year.

The Ursids meteor shower is active annually between December 17 and December 24 and peaks on the night of 22nd December with around 10 meteors per hour. The shower is named the Ursids because the meteors seem to radiate from the direction of the constellation Ursa Minor in the sky. The Ursids are associated with the 8P/Tuttle comet.



The first major meteor shower of 2022, the Quadrantids are usually active between the end of December and the second week of January, and peak around January 3-4. Unlike other meteor showers that tend to stay at their peak for about two days, the peak period of the Quadrantids only lasts a few hours with around 110 meteors per hour. The shower owes its name to the now-defunct constellation Quadrans Muralis and are associated with asteroid 2003 EH1 which takes about 5.5 years to orbit around the Sun. The Quadrantids is also sometimes called Bootids after the modern constellation, Boötes.



The Full Moon on December 19th is a Micromoon. This occurs when the Moon is closest to its apogee - the point in the Moon's orbit farthest away from Earth. Because a Micromoon is further away, it looks approximately 14% smaller than a Supermoon. In addition, the illuminated area appears 30% smaller, so it might look a little less bright. One of the traditional names for the Full Moon in December is Cold Moon. Other names include the long night moon and the oak moon.

The first Full Moon of the year on January 17th is known as Wolf Moon in many northern cultures, named after the howling of hungry wolves lamenting the scarcity of food in midwinter. Other names for this month's full moon include old moon and ice moon.

The winter solstice, the shortest day of the year in the northern hemisphere, occurs on 21st December. The world 'solstice' comes from the Latin solstitium meaning 'Sun stands still', because the apparent movement of the Sun's path north or south stops before changing direction.

On January 4th the Earth will reach its perihelion—the point on its orbit closest to the Sun – at around 91.4 million miles.

On January 7th, the planet Mercury is at its greatest elongation east. This is when the planet appears at its farthest distance from the Sun in the evening sky. It should be a bright in the twilight but tricky to see as only 14 degrees above the horizon in the south west at sunset.

As ever, please keep an eye out for the International Space Station (ISS) passes, due to return to the evening sky in the UK from November but there are no exact dates at the time of writing.

And finally...there is total solar eclipse happening on December 4th but unfortunately you will need to be in Antarctica to see it!

Chris & Helen Nunn

Subsidised Community Lifelines for Swavesey residents

Swavesey Parish Council is subsidising a number of lifelines for Swavesey residents.

The Community Lifeline Service allows people, young and old to stay in their homes longer and live independently. It is run by South Cambridgeshire District Council.

If you live alone or someone in your family is sometimes left alone and may need to call for assistance, the Council's Lifeline team can help.

In an emergency, pressing a button - worn around your neck or on your wrist - connects you via a contact centre with family, friends, neighbours, or the emergency services.



For more information on how Lifelines work, please look at www.scamb.gov.uk/lifelines or contact us for a leaflet on:- 01954 713470.

How to apply for a subsidised lifeline alarm

If you are interested in a lifeline subsidised by Swavesey Parish Council, please contact the Parish Clerk, Linda Miller on 01954 202982 or 07458 302193, or email her on clerk@swavesey.org.uk to see if there are places available. This is operated strictly on a first come first served basis.

The Parish Council will pass your details to the Lifeline Service who will contact you with more information and an application form.

How to apply for a self-funded lifeline alarm

If there are no subsidised places currently available, the Parish Clerk will put you on a waiting list and contact you when a space becomes free. In the meantime, you can still apply and pay for your own lifeline through the Lifeline Service. When a subsidised place becomes free, the payments of your lifeline will be passed over to the Parish Council on the next quarterly bill.

How to apply for a lifeline if you live in the Thistle Green Sheltered Scheme

Please contact your Sheltered Scheme Warden on 01954 713468 or email alarm.calls@scamb.gov.uk.

The Community Lifeline Service costs £4.47 per week. This is payable every three months in advance by a £58.11 direct debit. The installation charge is £30.

You can learn more about Lifelines and apply online at:- www.scamb.gov.uk/lifelines.

If you are interested in speaking with someone regarding the Lifeline Service, or would like an application form, please contact us on 01954 713470 or email lifelines@scamb.gov.uk.

"The Lifeline Service has enabled me to live comfortably and independently in my own home knowing that I can call on someone in an emergency"
Lifeline user living in Willingham.



Swavesey Warden Scheme

Support for independent living
Regular contact giving peace of mind
Extra support during times of need

Some examples of what the Warden can help with:

- A listening ear
- Making drinks and light meals
- Water plants
- Feeding pets
- Getting small items of shopping
- Collecting prescriptions
- Information and guidance

We have 19 warden services across the county, with 6 new schemes introduced this year and have capacity for more service user. Please get in touch for a FREE 2 Week trial - thereafter, if you wish to continue there is a small fee of only £9 a week (single person) or £11 per week (for a couple) temporary or permanent basis according to need.

Swavesey Warden Contact
Tracey Booth on 07436 102 736

<http://www.ageuk.org.uk/cambridgeshireandpeterborough/>
Helpline 0300 666 9860

Follow us on Facebook Age UK Cambridgeshire and Peterborough

Doctors Surgeries

Swavesey Surgery

(01954) 230202
Out of hours 111

Website:- www.swaveseynsurgery.nhs.uk
Information & updates on facebook page

Over Surgery

(01954) 231550
Out of hours 111

Website:- www.oversurgery.nhs.uk
Information & updates on facebook page

Longstanton

(01954) 207600
Out of hours 111

Website:-
www.willinghammedicalpractice.nhs.uk

See our website at www.swaveseymeridian.org.uk
for the full and latest surgery newsletters. Ed

Bar Hill Surgery

(01954) 780442
Out of hours (01954) 780442 -
call will automatically be diverted
Website:- www.mhmaple.co.uk/

Fenstanton

7E High Street, Fenstanton
01480 461873

Out of hours 111
Website:-
www.riverportmedicalpractice.co.uk

SCHOOLS INFORMATION

Swavesey Primary School Early Years and Playwork Centre

Wraparound Care and Early Years Provision – Mon to Fri – term-time

Registration Fee £15 per family for using Breakfast and/or After School Club

Breakfast Club 7.30 am – 8.55 am

3+ year olds to Year 6 children: £6 per child per session

After School Club 3.15 pm to 6.00 pm

For Reception to Year 6 children: £10 per child, family rate £9 per child

Early Years 9.00 am to 3.00 pm (full day) or morning (9-12/1) or afternoon (12-3)

For 2 ½ year olds to 4 year olds

Places for funded children up to 30 hours per week

Charged sessions:-

3+ year olds £13 half-day and £26 full-day

2 year olds £15 half-day and £30 full-day

£4.50 for lunch hour (12-1)

For more information and to register:-

<https://www.swavesey.cambs.sch.uk/page/?title=EY+%26amp%3B+P&pid=59>



BEAUTY, RELAXATION AND A WARM WELCOME...

Specialists in Shellac nails, Manicures & Pedicures, Spray Tanning,
Hair removal, Facials and Massage.

Stockists of Elemis Skincare, Sp@home and much more...

Gift Vouchers now available online at
www.englishrosebeautyhouse.co.uk

16 Berrycroft, Willingham, Cambridge CB24 5JX. Tel: 01954 261176

Swavesey Playtimers

Tuesday 10-11.30am
In the back room of the
Bethel Church, different craft
activities, stories and themes
each week. £2

Friday 10-12noon
At the Memorial Hall, singing
with Sharon from 11.15am.
Family with one child, £3.
More than one child, £4.
Under 6 months. £2.

All children under 5 welcome to these term-time toddler
groups. Find out what is going on from our
Facebook group - "Swavesey playgroups".
A great chance to meet local parents.



9am – 10am	Sing Up	choir	4yrs – 12yrs
10am – 11am	Rockin' Rhythms I	interactive theory lessons	4yrs – 7yrs
	Rockin' Rhythms II		8+yrs
	Rockin' Rhythms III		Grade 3+
NEW CLASS!	Rock School Rockets	guitars, drums	beginners
11am – 12pm	SMS Community Orchestra	instrumental ensemble	all levels; all ages
	Rock School	guitars, drums, vocals	9+yrs

Now in its 9th. Year!

Check out our new class: RS Rockets

Also, SMS Community Orchestra, open to all ages; adults, parents: why not pick up that instrument from youth and join us on a Saturday morning?

Email for more information and to check availability.

£4 per session!

Swavesey Music School
Swavesey Village College
Gibraltar Lane
Swavesey
CB24 4RS

<http://swaveseyms.co.uk/>

SWAVESEY VILLAGE COLLEGE ADULT EDUCATION

Please see our website for all information about our Adult Education courses for Dec 2021/Jan 2022

www.swaveseyvc.co.uk/community-education

Any enquiries please call 01954 234488

Email: community@swaveseyvc.co.uk



APRIL BURGESS MARTIN SCHOOL OF BALLET
BALLET AT OVER PRIMARY SCHOOL
THURSDAYS
AGE 3+ -17
CLASSICAL BALLET WITH FULLY TRAINED,
QUALIFIED, EXPERIENCED TEACHER
ASSOC. MEMBER ARBTA ;MEMBER BDQT
DBS CHECKED "PREVENT" TRAINED
DETAILS www.abmschoolofdance.co.uk
CLASSES ALSO IN GIRTON HISTON & COTTENHAM



Thinking of a move? We are happy to offer you a free, no obligation valuation of your property.



Call our Cambridge office for a free valuation
(01223) 356054



Call our Willingham office for a free valuation
(01954) 260940



Rainbows, Brownies, Guides and Rangers.

With our risk assessments to be Covid responsible signed off, we have been able to get back to meeting indoors after 18 months of Zooming and meeting outdoors.

Rainbows: None of our Rainbows had ever met inside before, so at our first meeting this term we all decided on some rules to keep us safe and happy and the girls have all been brilliant at remembering them! We tackled the Innovate Skills Builder badge and tied in some activities with the Bugs Life Challenge badge, so we made a jointed caterpillar puppet, and did some coding to get the bee to the flower without getting caught in a spider's web. We had a session trying some science experiments, and also found out which materials are slippery or sticky and how to make music using parts of our body. Lots of fun with bug themed crafts and games too. The second half of the term is busy with Parliament Week, Remembrance, Children in Need and Christmas activities. It will be great to be able to join in again in St Andrew's Advent Festival, we hope you liked our angels made from recycled paper? We are very proud to have sent 17 shoeboxes to Moldova with Love in a Box and very appreciative of one of our mums who is sharing with us how her family celebrates Diwali.

Brownies: We started our new term with a Promise ceremony and saying goodbye to four of our Brownies. We also welcomed nine new Brownies to our pack and a new assistant leader, Elf Owl.

Two of our young leaders ran Promise activities to help the new Brownies understand their Promise and remind the existing girls what they had promised: the Brownies looked at stereotypes and negative comments made about young people and girls, they learned about ways to help their community while playing a matching game and they made Good Turn mice to remind them of how often they help other people. We completed our Network skills builder by looking at how to break down a big goal into smaller, more manageable parts, what makes a good friend, how different tasks need different size teams, how some tasks are easier when we help one another and finally, how we all have different learning styles: looking, listening and moving. We also did lots of activities for our Fantasy Land Challenge badge, including making a paper rose, playing 'sorcerer says', decorating fairy wings and a horseshoe and making jam tarts. We also did the Xmas Pudding Challenge badge in time for Christmas and made decorations for our entry in the St Andrew's Advent Festival.

Guides: We started our new term round the fire, making biscuits and coded bracelets and planning our activities for the term. We welcomed seven new Guides to the unit and launched into the Make Change skills builder. The Guides chose a campaign for which they sewed patches, tried out different methods of getting their message across, worked out a campaign and planned a fundraising event. The Guides investigated stress reduction methods, such as breathing, digital detox, meditation, bring the natural world into their rooms, and keeping their minds active with tangrams. They made and decorated poppy biscuits for Remembrance Day, they made decorations for the St Andrew's Advent Festival and made Christmas puddings in a mug, among other things, for the Xmas Pudding Challenge.

Rangers: Rangers said goodbye to two of their members, Lara and Erica, who left for University at the end of September. The remaining Rangers did their First Aid skills builder this term, as well as making decorations for the Advent Festival at St Andrew's Church and a night walk to the chip shop. They also did the Time Traveller Challenge badge to celebrate Dr Who Day (23 November).

We have recently awarded the following:

Rainbows: Bronze to Lila-Rose

Brownies: Bronze to Hattie

Lara also earned her Leadership Qualification with Brownies.

Congratulations to all!

Rainbows and Brownies are full with waiting lists, sign your daughters up early for Rainbows, don't wait until she is 5 and her friends have started! See:- www.girlguiding.org.uk/joinus. Adult helpers are always welcome, please sign up here if you are interested or would like to know more. www.girlguiding.org.uk/get-involved/ This is a situation that is only going to get worse with 200 new houses currently being built in Swavesey. Please get in touch if you think you can help or would like to know more. Another Rainbow and Brownie Unit are most likely going to be needed, and it is possible they could be run alongside the existing ones with both doing the same activities and leaders joining together for planning. There would be lots of help and support for anyone wanting to get involved, see:-

www.girlguiding.org.uk/get-involved/become-a-volunteer/ways-of-volunteering/



We are still continuing to have face-to-face weekly sessions both at Cubs and Scouts, where we can we are trying to still spend as much time outside as we possibly can.

The building work to do up the Scout Hut is continuing and hopefully it won't be too long until it has been completed. And we can all then benefit from the extra space that we have from having the refurbishment done.

The group is still going well, currently we are only running two sections which are both really full, but we are always on the lookout for extra help and support.

Beavers:

Beavers are currently not running; we have several young people on the waiting list but unfortunately, we do not have any adults to come and help run the section. We will be trying to get some leaders to come and join the Scout Group and if we are in a position, we may be able to open Beavers again after Easter 2022.

Cubs:

The Cubs are trying to retain their winning streak with the Christmas Tree event at St. Andrews church again this year. They are also trying to spend as much time outside but with the darker colder nights of winter, it is not always that easy.

Scouts:

Unfortunately, the Scout Group was affected by COVID before Christmas and the planned Scuba Diving sessions had to be postponed to 2022. Over these past few months, we have been spending as much time outside as possible. We are planning on entering a couple of teams into the annual incident hike in March which is run by Scouts and Guides from Cambridge University.

If you would like to join either the Cubs or Scouts, then please do get in touch at the email address below. To confirm the ages for each section, Beavers 6-8years, Cubs 8-10½ years and the Scouts are 10½-14 years old.

Christmas Post:

The group have decided that the current situation with the COVID pandemic it is safe enough for us to do the Christmas Post again, hopefully everyone would have seen adverts on social media or in the local shops advertising that we are planning on doing this again,

Volunteers:

We are always after extra help and support, if you would like to help out but are unsure how, please do get in touch. Not only will you be able to give the young people of the village and surrounding areas new experiences and memories, but you will also get your own experiences and memories that will stay with you.

If you have any questions regarding joining as Beaver, Cub, Scout or as an adult volunteering or anything else relating to the Scout Group, please do get in touch with us by emailing us at info@1stswaveseyscoutgroup.org.uk and we will happily get back to you as soon as possible.

Notes From Your DC - Sue Ellington

Christmas approaches but as I am writing this in October I will not be focusing on Christmas. I am concerned to find that the pandemic shows few signs of being over. Yes we are able to do more with less restrictions but the incidence of the disease is currently increasing although it is considerably less severe. It has been an awful 2 years but hopefully 2022 will be better.

South Cambs District Council has been busy preparing the next local plan which will be open for consultation when you read this. It includes a proposal to build a further 49,000 houses in South Cambs over the next 20 years. They have chosen sites which are mainly linked to current new developments such as Cambourne, Waterbeach, Bourn airfield, Marshall's airfield and Northstowe to avoid villages. But there are many issues which will affect Swavesey. The basic infrastructure of roads, health facilities, schools and transport are obvious but for Swavesey it is the fact that a very high percentage of sewage from Cambourne, Bourne, and Northstowe will be piped to Uttons Drove Sewage Works and the outflow will have to go in the open drain which encircles Swavesey to be pumped over the river bank at Webb's Hole. If that system overtops the banks or fails there is significant threat of flooding to Swavesey. I shall be working hard to ensure everybody understands the significance and takes steps to ensure Swavesey's safety.

The other issue is the availability of water to supply the increase in housing. I am sure you have read about it in the paper but there are water issues which are not well understood when planning new developments as South Cambs District Council have found when kingfisher pond in Longstanton dried up after Northstowe started being built. The council are defending a high court hearing about that on the day I am writing this.

There has been much village concern about the need for the 30 mph restrictions to be extended beyond the new development. Quite rightly there are fears when vehicles can drive at 60mph right up to the traffic calming measure. I chair a liaison committee which meet 3 monthly with all the village developers, the county officers from Highways, and water/flood, district officers for planning and the parish council. This committee has raised this issue on all occasions without success. I hope that the current bid will be successful but the more villagers who write to the Parish Council to support the move, the better.

The next traffic issue is going to be the Ramper Road junction with Middlewatch. The liaison committee have been alerted to our concerns but as yet we have no positive conclusions. The new development is going to open onto the junction and there is no footpath on the far side. We are pushing for

a pedestrian crossing and other measures to keep traffic moving and pedestrians safe.

The Welcome pack for families moving into our new homes has been very successful so we need to edit and reprint ready for the next group of new residents. If you have a change in contact details for your organisation please let me or The clerk to the parish council know.

I am aware there are still issues around getting planning applications decided but there is still a severe shortage of staff although the administration is trying to resolve the problem. There are also problems with getting the accounts audited with the external auditors threatening special measures but we have been promised that that is being resolved.

If I can sort out any problems with the council please feel free to give me a ring on 07774146331 or 01954202923.

Or email me at Cllr.ellington@scambs.gov.uk.

Sue Ellington

District Councillor for Swavesey, Fen Drayton and Lolworth.

REED R **REED KITCHENS & BATHROOMS**
DESIGN TO INSTALLATION
THE COMPLETE SERVICE

We are a local established company since 1994 that manufactures a range of top quality kitchens and offers them direct to you, at an upfront price that includes everything from design to full installation. It also includes your choice of top range appliances from the likes of NEFF and Bosch.

Makeover your kitchen using our door and worktop replacement service.

Call for a free Brochure

ArtiCAD[®] COMPUTER AIDED DESIGN SERVICE
DOMESTIC INSTALLER
www.kbbi.org.uk
KBBI
Kitchen, Bathroom & Bedroom Installers

KITCHENS
BATHROOMS
BEDROOMS

Tel: 01954 232899 Mobile: 07711 696015
For more details visit: www.kitchenscambridge.com
email: glenn@kitchenscambridge.com

SWAVESEY PARISH

Parish Council News September/October 2021

COUNTY COUNCIL

Highways maintenance by the Highways Dept. is continuing.

The Clerk has been in contact, on a number of occasions, with the County Highways Officer, to identify all of the outstanding blocked surface water gullies and highway maintenance items. Jetting crews were in the village on October 8th and four further visits were programmed to complete the village. The Officer indicated that there would be a 2-year programme to maintain the gullies.

The PC has received correspondence concerned at the level of street lighting in Gibraltar Lane. The County Council will not increase the current provision as a result the Clerk is asking that the overhanging shrubs and trees are cut back to ensure that the maximum light is directed to the street.

The PC is in discussions with the County Council with regard to the ongoing concerns about speeding in Boxworth End and the safety of the Ramper Road junction and the impact of the new developments.

The PC has received a report on the recent flooding around Ramper Road and elsewhere as a result they continue to press for action in particular where the foul drainage is being impacted. There is particular concern at the impact from new developments where limited surface water has been allowed to flow into the foul drainage system.

A Local Highways Improvement scheme application has been submitted for speed reduction measures in Fen Drayton Road. Recent correspondence from The Bloor homes site will be used in support of the application.

DISTRICT COUNCIL

The PC is to take up the offer of free trees to be planted in consultation with our Tree Warden as part of the Queen's Green Canopy initiative for the Jubilee next year.

The RSPB is expanding its reserve into Over towards Earith. Our District Councillor is to arrange a joint briefing from the RSPB with other interested parishes.

The first draft of the emerging Local Plan has been published. Additional housing has been added to the plan which now proposes 49,000 new dwellings in South Cambs. There is at present no direct housing impact on Swavesey but the impact on drainage and other infrastructure issues is extremely concerning for our Parish.

The PC has pressed the planners on their inability to enforce planning decisions where they are ignored. The reply received indicated that it was at the planning officer's discretion as to enforcement issues.

COUNCIL NEWS

A vacancy on the Parish Council is to be the subject of an election called for by 10 village residents. The cost of the election which will be up to approx. £2,800 will fall to the PC. The result will be known before the Meridian is circulated.

DRAINAGE

The PC continues to press for improved drainage and raise issues of concern (see elsewhere in this report).

PLANNING

A number of planning applications have been considered. The PC response is set out in the minutes of meetings (see the village website).

FINANCE

The Hale Road Allotment site lease with the Galon's Charity is due for renewal. The PC is to meet the cost of renewing the lease and is suggesting the renewal be for 20 years.

VILLAGE MATTERS

The handyman has reported graffiti to the play equipment, a millennium marker post, and in addition plants pulled from planters. Remedial work has taken place.

The annual tree inspection report has been prepared and necessary maintenance work has been arranged.

The village ponds have been dug out and the detritus from them removed. Apologies for inconvenience.

The PC agreed to a request from the Primary School to continue to use the gate on to the village green.

The PC has received and considered a letter from a resident concerned at their decision to require dogs to be kept on leads on the Village Green and Market Street Green. Signs are to be put up to notify of the decision. The PC is investigating ways of increasing the capacity and location of dog waste bins.

The PC has agreed to a request for a Memorial Bench to be installed on Market Street Green in memory of Bob and Anne Stone.

The Coronation Bench on Rose and Crown Road is to be refurbished and relocated.

Councillor Ms S Smith reported that Community Catalysts have been taken on by the CC to look at supporting care workers and to encourage local small care worker business models. They are hoping to use Swavesey as a pilot village for the scheme.

Working Group meetings have started for both the Neighbourhood Plan and the new Sportsground.

Swavesey Parish Council Website:- www.swavesey.org.uk		
Parish Councillors	Telephone (01954)	E-mail address
Warren Wright (Chairman)	203172	wwright@swavesey.org.uk
John Pook (Vice-Chairman)	230978	jpook@swavesey.org.uk
Martin Johnston	200605	mjohnston@swavesey.org.uk
Lisa Boyes	232603	lboyes@swavesey.org.uk
James Dodson	230560	jdodson@swavesey.org.uk
Stuart Faben	07887 906982	sfaben@swavesey.org.uk
Hannah Parish	203035	hparish@swavesey.org.uk
Colin Parsons	230861	cparsons@swavesey.org.uk
Sandie Smith	232356	ssmith@swavesey.org.uk
Keith Wilderspin	230083	kwilderspin@swavesey.org.uk
Doug Hunt	232478	dhunt@swavesey.org.uk
Clerk: Linda Miller	202982	clerk@swavesey.org.uk
District Councillor: Sue Ellington	202923	cllr.ellington@scambs.gov.uk
County Councillor: Mandy Smith Papworth & Swavesey Ward	230248	mandy.smith@cambridgeshire.gov.uk
Memorial Hall Administrator: Nicole Mullee	07963 861791	memorialhall@swavesey.org.uk

Swavesey Parish Council meets on the 2nd Thursday of each month for Planning items and on the 4th Monday of each month for Full Council.

All meetings are held in the Memorial Hall at 7.30pm. There is always a 10 minute public forum at the start of the meeting.






300007

The Complete Gas Heating and Plumbing Company

**Plumbing • Heating • Gas
Bathrooms • Water Softeners
Property Maintenance**

**Tel: 01954 204044 • Web: www.entiregroup.co.uk
Email: service@entiregroup.co.uk**

Family firm since 1974

PEST PROBLEM?


LOCAL QUALITY SERVICE

pest control/prevention/
emergencies/contracts/quotations/
birds/rodents/insects/more...

t: 01954 230708
m: 07836 245670
w: www.drepestcontrol.co.uk
e: info@drepestcontrol.co.uk




19, WALLMANS LANE
CAMBRIDGE
CB24 4QY



SACRED HEART OF JESUS
Roman-Catholic Parish
19 Needingworth Road, St Ives, Cambs. PE27 5JT

Parish Priest: Rev ThomasJ Walton

Tel: 01480 462 192
www.sacredheart-stives.org.uk
email: office@sacredheart-stives.org.uk

Mass Times:
Saturday 17.00 (Anticipatory)
Sunday 08.00 and 11.00

LANGLEY & Co.

Accountants

**Are you paying too much tax?
Are you claiming all your business expenses?
Do you need help with your accounting and taxation affairs?**

We provide a complete range of accounting and taxation services including:

- ◆ Accounts preparation for sole traders, partnerships and small businesses including limited companies
 - ◆ Self assessment preparation and online filing
 - ◆ Bookkeeping including payroll, CIS and VAT
- ◆ Taxation advice
- ◆ Business start-ups
- ◆ Business planning
- ◆ Pension reviews

For a friendly and competitively priced service from local accountants please contact Doug Langley at:

Unit C1, 2 Station Road, Swavesey, CB24 4QJ
Tel: 01954 231249 Email:doug@langleyaccountants.co.uk



WELCOME

We are enjoying meeting in person again and would love to welcome you to our Sunday Services at 10.45am. If you are unable to get along in person we still stream our service every week on Youtube.

CONTACTS

Stacey Alsop (Admin) – admin@bethelbaptistchurch.org.uk

Sue Hope (Secretary) – secretary@bethelbaptistchurch.org.uk

Wendy Whistler (Treasurer) treasurer@bethelbaptistchurch.org.uk

Marianne Holt (Youthworker) – marianne@bethelbaptistchurch.org.uk

Wendy Snead (Pastoral Care) – pastoralcare@bethelbaptistchurch.org.uk

www.bethelbaptistchurch.org.uk

Bethel Baptist Church Swavesey on Apple and Android

CLUB VINTAGE

Wow! We have been so overwhelmed with the positive response to Club Vintage and the obvious need for it in our village. We have now been open for three weeks and each week we have met new faces and enjoyed new experiences together!

If you haven't yet attended, **Club Vintage** is designed to support older people and extends a special welcome to those with dementia and their carers. There is a small £3 weekly charge.

We meet on **Wednesdays 2pm – 4pm.**

Registration is open. Contact us or visit the Church during Compass Cafe for more information.



CHRISTMAS AT BETHEL

DATES FOR YOUR DIARY

Please note: some of the dates and timings have changed since the last Meridian. Continue to check our website, app and Facebook for up to date information. We all hope that this year our plans can and will go ahead but if anything changes we will communicate through these first.

Carols by Candlelight

Sunday 12th December – 7pm At Bethel

Swavesey's Village Carols

Saturday 18th December – 5pm at Swavesey Primary

Christmas Sanctuary

Sunday 19th December – 7pm at Bethel

Club Vintage Christmas Party

Wednesday 22nd December – 2-4pm at Bethel

A Messy Christmas Eve

Friday 24th December – 4-6pm at Bethel

Christmas Day

Saturday 25th December – 10.45am at Bethel

A Boxing Day Walk

Sunday 26th December – 10.45am, location tbc

Club Vintage Meal

Wednesday 29th December – 2-4pm at Bethel



Compass Café

"Encompasses the community"

Thursdays
10:30am until 12 noon
At Bethel Baptist Church



"Excellent home-made cakes with
fair trade coffee and tea"



Priced to be affordable to all:
Tea/coffee/hot chocolate £1 per mug
and Cakes £1 per large slice
(Cake will be £1.50 from January 2022)

Please use the side door to enter, the far side door has
a ramp for wheelchair users and pushchairs.

Compass café is run as a community event, a place to meet
and chat. Your hosts are a group from one of:
Bethel Baptist Church, Swavesey Women's Institute,
St Andrew's Church, Swavesey Festival and
Girlguiding Units in Swavesey.

When there is a 5th Thursday in the month other groups
are invited to run the café to fundraise. Please get in touch
with Sue Ellington if you would like to know more.
sue.ellington@virgin.net or phone 01954 202923



The Parish Church of St Andrew

The season of Advent is here and our thoughts are turning
towards Christmas and if we dare, the new year.

Christingle Service

We will be holding our Christingle service in support of The Children's Society
on Sunday, December 5th at 4:30pm. but in order to maintain safety for all,
there will be a limit on the number of people attending. If you would like to take
part, you will need a free ticket, available by contacting:-

Nicky Carne: nicky_carne@hotmail.com 01954 230971

or Jacqui Fuller: jacqui_fuller@hotmail.com 01954 230774.

We will only have enough places for one hundred people including adults and
children and tickets will be issued on a first come, first served basis. Please
book your place by Friday, December 3rd. We won't be giving out the candle
money boxes before the service this year but they will be available for your
donations for the work of The Children's Society in church on the day. If you
are interested in seeing how your money is used, please look at their website:
www.childrensociety.org.uk

Christmas Church Services

You are welcome to all our services over Christmas; please come and help us
celebrate the birth of Jesus!

Sunday, December 19th: 11am: Holy Communion
4:30pm: Carol Service

Friday, December 24th: 11:30pm: Midnight Mass

Saturday, December 25th: No service in church

Sunday, December 26th: 11am: Holy Communion

There will be a recorded online service available from Christmas Day at:
www.5folds.org.uk/page/online-services-and-resources

Snowdrop Walk and Open Studio: Date to be confirmed

Once again Jeremy and Gillian Newsum, of Priory House, have offered to
open their gardens on behalf of the church for a Snowdrop Walk. Jeremy will
also be opening his studio. The date of this event is impossible to predict so
look out for information on our noticeboards, Facebook and online on the
5folds website.

Refreshments will be served in church.

Countdown to Christmas?



Each year, the youngsters amongst us certainly count down the days to Christmas. For example: '3 more sleeps... 2 more sleeps... 1 more sleep until Christmas Day'. Yet the last month of the year can appear to gain pace by the day. In many ways the momentum is upward, not downward, if we consider the anticipation and excitement levels. Then there is the expenditure on gifts and good

food. This year we can expect a steep rise in energy costs with gas prices the way they are.

December also brings an endless number of enjoyable events to engage in: Christmas lights switch on; seasonal fairs; and carol services to name a few examples. As a child, I remember the diary being full with never a dull moment in December. My mum was the organist and choir director at our local church. My brother and I were in the choir, so we all sang our full quota of carols at school, at church and in the community youth choir. Now that collective singing is possible, I know that many people look forward to singing carols this Christmas. Perhaps it will be a case of 'the more the merrier'.

In the Nativity story, I imagine the relative peace and tranquillity of the sheep, the wise men's camels and the donkey. I tend to assume that they continued to take life at a leisurely pace, even if the Shepherds, Wise Men, Mary and Joseph were wanting to travel with speed. Each Advent, I like to take a few quiet days to prepare practically for Christmas – browsing in the shops slowly and steadily working my way through the writing of cards.

Last year, December seemed to have a strange feel. First looking forward to spending the Christmas period with loved ones, then another lockdown looming ominously on the horizon. As Covid-19 cases soared, so the seasonal festivities unravelled and diminished. Who knows what it will be like this time.

Whether you are counting up or counting down this December, I wish you a Happy Christmas and New Year.

*Rev'd Lucy Cleland, Team Vicar in the 5folds Group
Longstanton, Northstowe, Over, Swavesey and Willingham
T: (01954) 277758 E: lucy@5folds.org.uk*

Community Groups & Charities

Swavesey Neighbourhood Plan Steering Group	A voluntary group who meet on the first Monday each month to set out the vision for Swavesey and the planning policies needed to manage development according to the wishes of the local community. See http://www.swavesey.org.uk/neighbourhood-plan/ or Email: clerk@swavesey.org.uk for more information
Cam Sight	Cam Sight is a local charity which offers support to anyone with a visual impairment, along with their family and carers. We meet on the 4th Wednesday afternoon of each month in Bar Hill. For more information please telephone Joan in Bar Hill on 01954 200622 or Alison at Cam Sight on 01223 420033 or email alison@camsight.org.uk . For more info see:- www.camsight.org.uk
Cambridgeshire Hearing Help	CHH is a charity that helps people with hearing loss. Volunteers service NHS hearing aids and provide batteries and they attend Swavesey quarterly at Thistle Green. Advice on any aspects of hearing loss is available at a hearing help session or by calling the office on 01223 416141, e-mail enquiries@cambridgeshirehearinghelp.org.uk or check the website cambridgeshirehearinghelp.org.uk
Care Network	Care Network supports volunteers, encourages independence and develops good neighbour projects. We provide the Welcome Home from Hospital service across Cambridgeshire. Contact:- Care Network, 5 Broadway House, 149-151 St Neots Rd, Hardwick, Cambridge, CB23 7QJ (tel: 01954 211919). care-network.org.uk/
Community First Responder Scheme	The local group in Over and Swavesey has provided help over many hours and attended over 20 patients in your community. You can support the group and help to fundraise for equipment or volunteer to become a Community First Responder within your community. Contact:- responderadmin@eastamb.nhs.uk or call 01284 731802
Swavesey Library	A volunteer run community library based in Swavesey Village College. We are able to providing a full range of library facilities being directly linked to the Cambridgeshire County Council library service. For more info see:- www.swavesey.org.uk/village-link/swavesey-library
The Friends of the Rosie Hospital	The Friends of the Rosie Hospital are helping to make the Rosie a more comfortable environment for mothers and babies. Contact:- Mrs Mary Sanders (Hon Chair) rosieinstitches@ukonline.co.uk Tel 01223 356615
East Anglia's Children's Hospice (EACH)	Put your free time to good use and volunteer at East Anglia's Children's Hospice (EACH) in Milton. Volunteering at a children's hospice doesn't always mean care work and fundraising as there are also tasks such as admin and maintenance of the grounds. Contact:- Clare Bates on 01223 815 134, email clare.bates@each.org.uk
Community Resourcing	We have a small group of local volunteers (local residents from our community) who would like to help other members of our community with any practical tasks. Contact:- Parish Council Tel: 01954 202982 or Email: clerk@swavesey.org.uk
OWLS Community Car Scheme	Run by DBS checked volunteers the scheme offers a door-to-door service, for medical or some social journeys, to people who are unable to access other forms of transport. Ring 07505 254363 to book a journey, find out more, or to volunteer as a driver

CLUB INFORMATION

Army Cadet Force	Swavesey Detachment, No 2 (Cromwell) Company, Cambridgeshire Army Cadet Force meets each Tuesday evening at the Swavesey Village College from 7 pm. New recruits are welcomed from ages 12 years (year 8) to 18 years. Contact - Sgt Phill Barrett phone 07786981380																								
Over District Girlguiding Swavesey and Over	<table border="1"> <thead> <tr> <th>Unit</th> <th>Evening</th> <th>Contact</th> </tr> </thead> <tbody> <tr> <td>Swavesey Rainbows</td> <td>Thurs</td> <td>caroline@overroad.co.uk</td> </tr> <tr> <td>Swavesey Brownies</td> <td>Mon</td> <td>swaveseyeagleowl@gmail.com</td> </tr> <tr> <td>Swavesey Guides</td> <td>Thurs</td> <td>swaveseyguides@gmail.com</td> </tr> <tr> <td>Over Rainbows</td> <td>Mon</td> <td></td> </tr> <tr> <td>Swavesey Rangers</td> <td>Thurs</td> <td>seniorsectionoverdistrict@gmail.com</td> </tr> <tr> <td>Over Brownies</td> <td>Wed</td> <td></td> </tr> <tr> <td>Over Guides</td> <td>Tue</td> <td></td> </tr> </tbody> </table>	Unit	Evening	Contact	Swavesey Rainbows	Thurs	caroline@overroad.co.uk	Swavesey Brownies	Mon	swaveseyeagleowl@gmail.com	Swavesey Guides	Thurs	swaveseyguides@gmail.com	Over Rainbows	Mon		Swavesey Rangers	Thurs	seniorsectionoverdistrict@gmail.com	Over Brownies	Wed		Over Guides	Tue	
	Unit	Evening	Contact																						
	Swavesey Rainbows	Thurs	caroline@overroad.co.uk																						
	Swavesey Brownies	Mon	swaveseyeagleowl@gmail.com																						
	Swavesey Guides	Thurs	swaveseyguides@gmail.com																						
	Over Rainbows	Mon																							
	Swavesey Rangers	Thurs	seniorsectionoverdistrict@gmail.com																						
	Over Brownies	Wed																							
Over Guides	Tue																								
Swavesey Spartans	Swavesey Spartans are a Chartered Standard Youth Football Club affiliated to Cambridgeshire Football Association. The club runs boys and girls teams from under 6 through to under 17. For information and enquiries please contact Chairperson - Mr Darren Bucknall 07872 681167 Secretary - Mr Simon Dawson 07886 215205 Club Welfare Officer - Carolyn Merricks on 01954 204972																								
1 st Swavesey Scout Group	All sections meet at the Scout Hut on the SVC site Cubs Day: Tuesday: 18.00 to 19.15 Contact: Steven Wilson - Cub Leader Email: steven.wilson@1stswaveseyscoutgroup.org.uk Scouts Day: Monday. Time: 19.00 to 20.30 Contact: Jim Burling - Group Scout Leader Email: jim.burling@1stswaveseyscoutgroup.org.uk For any other enquiries Email: info@1stswaveseyscoutgroup.org.uk																								
Swavesey Early Years and Playwork Centre	Swavesey Early Years and Playwork Centre are based in their own purpose-built unit on the primary school site. It comprises Early Years children (aged 2 – 4 years) between 9am and 3pm (formerly Swavesey Pre School) and we provide activities and care for primary school aged children before and after school. Breakfast Club runs from 7.30 am to 9am and After School Club from 3.15pm to 6pm. For information please contact Carol Panther (Early Years and Playwork Manager) by email: eyandp@swavesey.cambs.sch.uk or by phone 01954 273312 or 07803 812221.																								
Swavesey Music School	Meets every Saturday of term time at Swavesey Village College. Only £3.00 per session. For further details see: www.swaveseymusic.co.uk/																								

Health and Wellbeing Club	A club for older adults which runs on the last Tuesday of the month with the exception of December. The group meets at the Community Centre, Thistle Green, Swavesey from 10.00 to 11.30am. Refreshments, chair-based exercises, speakers and time for conversation. No booking is required and the group is Free.
British Tang Soo Do Institute	British Tang Soo Do Institute practices the Korean martial art of Tang Soo Do. Our club training covers self defence techniques and many aspects of fitness including flexibility, coordination, conditioning, balance and discipline helping to promote a healthy lifestyle. For further information please contact Master Jeff Cockram on 07863 345681 or jeff@btsdi.co.uk or see our website: www.btsdi.com
Swavesey Tang Soo Do Club	Swavesey Tang Soo Do have classes on a Monday and Wednesday in the primary school main hall. Beginners and junior grades are 6pm-7pm and senior grades 7pm-8:15pm. The contact details are Mr and Mrs Morton 07919 050261 and enquiries@swaveseytsd.co.uk . The website is www.swaveseytsd.co.uk
Allotments in Swavesey	Down Hale Road towards the windmill and on the right there are 61 plots, mostly 150 sq yds (125 m ²) in area, backed up by eight water tanks. Large yields of a wide range of high quality vegetable, fruit and flower crops can be grown successfully. If you are interested in joining the waiting list contact Russell Fear on 01954 202846.
British Legion	For information contact:- Secretary - Angela Dye. 01954 277453. email: dyeangela0@gmail.com
Swavesey Badminton Club	Located at the Swavesey Village College Sports Centre. The Club offers a high standard of play at club nights on Tuesdays 7pm to 8pm and on Fridays from 6.30pm to 9.30pm. We play competitive badminton in the Cambridge leagues and run men's, women's and mixed teams. Contact Helen Taylor on 01954 230997 Email: enquiries@swaveseybadminton.net website: www.swaveseybadminton.net
Swavesey Billiards and Snooker Club	For information/membership please contact Graeme Waites (01954 230113) Email graham.waites566@btinternet.com
Swavesey Camera Club	At Swavesey Camera Club we are proud to cater for photographers of all standards. For more information visit our website at www.swaveseycameraclub.co.uk . We meet every Thursday, 7.30 - 9.30pm, Lecture Room, SVC. Non-members welcome - £4 charge (first visit free). For further details please ring Simon Shore 01954 230848
Swavesey Squash Club	Swavesey Squash Club has three international standard squash courts, in our recently refurbished clubhouse, on the Swavesey Village College site. The club has a number of weekly sessions running, suitable for beginners, improvers, and more advanced players. Unlimited use of the facility from £17 a month. A welcoming and active community club with social events and opportunities for competition. Visit our website for more details or contact Ali Loke on 07776 176866/ ali@alilokesquash.com . www.swaveseysquash.com

Over Netball Club	We train on a Tuesday night 7pm till 8.30pm on the outdoor courts at Swavesey Village College. Small friendly club, play in CDNL local league, beginners/ everyone welcome. Cost £3 per session. Contact is Lindsay Foster - lindsayfoster001@gmail.com 01954 202070 or 07543 460725
Compass Cafe	Meets every Thursday morning from 10.30 until 12.00 at Bethel Baptist Church. Contact Sue Ellington on 01954 202923 or sue.ellington@virgin.net
Swavesey Community Choir	If you enjoy singing and having fun then come and join Swavesey Community Choir. We meet every Wednesday in term time in St. Cecilia's Hall at SVC, from 7.30pm - 9pm. You don't need to be able to read music and no auditions needed, tenor and bass voices particularly welcome. For further details contact Chrissie Richardson 07881 824095. Website: www.swaveseycommunitychoir.co.uk
Swavesey District Bridleway Association	A liaison group representing local horse riders whose main aim is to protect existing and create safe new horse riding links between all local villages. New members welcome. Regular Newsletter/Social events calendar. Please contact Sue Rogers (01954) 232758
Swavesey & District History Society	Meet every third Tuesday in the month, 7.30pm, Global Resources Centre, SVC. Contact Carolyn Redmayne, Secretary (01954) 230037
Swavesey Institute Football Club	New players always welcome, please contact: Phil Baines on 01954 200377 [Saturday sides] or Jerry Ladell on (01954) 201018 [Veterans side].
Linedance	Linedance classes held on Wednesday mornings at the Bethel Baptist Church 9-30 to 11-30 am. Beginners always welcome. Contact Deborah Walker 01954231382 Email: deborahwalker105@talktalk.net
Swavesey & Over Conservation Society	Meet at Bethel Baptist Church, Middlewatch Swavesey CB24 4RP commencing at 7.30pm on the 2 nd Wednesday of the month unless otherwise stated. If you need a lift: PHONE: Trevor Grange - 01954 230119 or Pat Miles - 01954 780485. Guests Are Always Welcome!
Swavesey & Over Tennis Club	Club night 1 October to 1 April is on Monday, 7.00 to 9.00pm. From 1 April - 30 September there will be club nights on both Mondays and Wednesdays. We welcome new members from anywhere in the locality. Further information from s.taylor996@btinternet.com https://swaveseyovertennis.wixsite.com/sotc
Swavesey RADsOc	Friendly local drama group staging two or three productions a year. New members always welcome. Contact: Nathalie Balzano: nathaliewoodward@hotmail.com Visit our website at www.swaveseyradsoc.org.uk
Swavesey Speakers	Develop your public speaking skills at this Toastmasters International club. Guests welcome! 1 st & 3 rd Tuesday of every month at the Memorial Hall from 7pm to 9pm (occasional venue change). More details: www.swaveseyspeakers.toastmastersclubs.org or call/text Faye on 07908 443610.
Swavesey W.I.	We meet every second Monday of the month at 7.30pm in the Memorial Hall. New members are always welcome to enjoy a variety of invited speakers and have a chat and cup of tea/coffee afterwards. For further information contact Linda Saunders (01954) 201162
Women's Walking	Women's Walking on Mondays and Fridays at 10:00AM. Meet on Market Street green. Walk for approximately one hour on pathways in and around Swavesey. A chance to exercise and chat. Reasonably robust footwear recommended. All welcome. Clare Fox 01954 202882

THE MERIDIAN ADVERTISER December/January

Landscaping & Garden Services

Grower & Supplier of Trees, Shrubs & Hedges



- ✘ Supply and or planting of trees, shrubs and hedges
- ✘ Cutting / Pruning of trees, shrubs and hedges.
- ✘ Land Preparation, spraying, lawn seeding and turfing
- ✘ General maintenance, clearance and repairs
- ✘ Fencing, Gates and Paving

For a FREE estimate phone :- 07786699977
or 01954 770306
or visit www.eparish-landscaping.co.uk
or Email : edwin@parishnet.co.uk




■ ■ ■ ■ **Sue Allen**
Bespoke Framing

- Photos, prints, oil paintings, cross-stitch, mirrors & glass replacement
- Garments including football shirts, christening gowns and first shoes
- Large selection of frame styles
- Collection and delivery service available
- Based in Over



For all enquiries please contact Sue on **01954 203272** or (m) **07779 528 408**
suzanneallen64@gmail.com

M.B. FLACK

Interior & Exterior
Painter & Decorator
& Repairs

30+ Years Experience
in the trade.

Free Estimates

Telephone
01954 231 915

ALEX ARTHURS

BUILDING SERVICES

ALL ASPECTS OF BRICKWORK UNDERTAKEN

EXTENSIONS • TRADITIONAL BRICKWORK • ALTERATIONS
GARDEN WALLS • CHIMNEY REBUILDING • REPOINTING
FIREPLACES • STONE SILLS AND THRESHOLDS

PAVING • SLABS & NATURAL STONE • BLOCK PAVING
CONCRETING • GROUNDWORKS • FENCING • DECKING

FOR A FREE QUOTATION & ADVICE CALL ALEX ARTHURS

01954 232050 or 07841 433652



wilderspin
GARAGE LTD

A local family-run business

**MOTOR -
HOME SERVICING -
MOT'S & HABITATION CHECKS
ALL DONE ON SITE**



SERVICING & REPAIRS

EXHAUSTS | BATTERIES | TYRES | CLUTCHES | BRAKES | TIMING BELTS

M.O.T. TESTING CENTRE

CLASSES 4,5 & 7 | MOTOR HOMES | MINI BUSES
CARS | VANS | LIGHT COMMERCIAL

FREE
USE OF
COURTESY CARS

FREE
WINTER
HEALTH CHECK

FREE
COLLECTION AND
DELIVERY SERVICE

OAKTREE ROAD | FEN DRAYTON | CB24 4SS
Tel: 01954 230273 | Email: service@wilderspins.net
www.wilderspin-garage.co.uk



YOUR PERSONAL WEALTH. OUR PERSONAL RESPONSIBILITY.

At Tilney, we have been helping clients achieve their financial goals for more than 180 years. Whether you are saving for retirement, want to pass on your wealth or would like to have your investments managed by an expert, we can do the same for you.

To find out how we can help you, please call our Cambridge office on **01223 452 840** or email neil.trickett@tilney.co.uk for Investment Management or laura.ingram@tilney.co.uk for Financial Planning.

Investments carry risk –
investors can lose money investing.
tilney.co.uk



Do you need a chiropodist? Are you sure?



As a fully qualified foot health practitioner
I am trained in the following:

Diabetic foot health care
Toenail cutting
Corn and callous removal
Bunion relief
Minor wound dressing
And the treatment of many other foot health problems.

All in the comfort of your own home.

Tracy Griffiths
Foot Health Practitioner

Call today to make an appointment
Telephone: 07840 636883
Email: tracy.griffiths@hotmail.com

MOBILITY EQUIPMENT

SCOOTERS, WHEELCHAIRS,
RISING CHAIRS, BEDS,
WALKERS, TOILET, BATHING,
KITCHEN AIDS, STAIRLIFTS,
CONTINENCE CARE

Orchard Mobility Centre
Scotsdales Garden Centre
High Street
Horningsea
CB25 9JG



01223 863908

Mon to Sat 9.00 - 5.00



Alpha Cars

**01954
23 23 00**

www.alphacarsonline.co.uk

Your local, reliable taxi firm
think taxi, think Alpha Cars

• Corporate Accounts Welcome • Nights Out
• Airport Transfers • Village to Village

Buttercups CHILDCARE LTD

Childcare and Early Years education for children aged 4 months to 5 years.

We are now open and following stringent Government guidance.
Staff trained in Covid-19 Awareness.

Monday to Friday, 7.30am to 6pm (excluding Bank Holidays), 50 weeks a year.

2 and 3 year old funded spaces available (including 30 hours.)
Video tour available on request.

Find us in Gladeside, Bar Hill, Cambridge, CB23 8DY.

Contact the Nursery
Phone: 01954 488081
Email: nursery@buttercupchildcareltd.co.uk

www.buttercupchildcareltd.co.uk

Sales: Servicing Salt

- ▶ Supply & Installation Service
- ▶ Servicing & Repairs
- ▶ Drinking Water Systems
- ▶ Salt Delivery & Collection

www.aquastream-softeners.co.uk

Unit 17 Meridian, Buckingham Business Park, Anderson Road, Swavesey, Cambridge, CB24 4AE

AQUASTREAM
Water Softeners limited

01954 230898



**Authorised
Ecowater & Kinetico
Dealership**



Andy Tibbett & Sons Painting & Decorating



- * All internal & external work carried out to a high standard
- * Trade references can be supplied
- * Very competitive pricing
- * A prompt & polite service from a name you can trust

Telephone: 01954 230810

Mobile: 07717 493723

Email: andrewtibbett@hotmail.co.uk



Ash Croft Veterinary Surgery

169 St. Neots Road,
Hardwick, Cambridge CB23 7QJ
Mon.-Fri. 8.30am - 10.30am
4.30pm - 7.00pm
Saturday 9.00am - 11.00am
Sunday 10.00am - 11.00am
Tel: 01954 210250

Unit 1 Pendrill Court, Ermine Street North
Papworth Everard, Cambridge CB23 3UY
Monday, Wednesday, Friday 11.30am - 1.30pm
Saturday 12noon - 1.30pm
Tel: 01480 831615

Laura Wood MA, VetMB, MRCVS
Simon Shore MA, VETMB, MRCVS
Dragan Tomovic BVSc, MRCVS
Consultations by appointment only

BA Building Services

EXPERIENCED LOCAL BUILDER

For all your building requirements

- All aspects of Brickwork
- Extensions
- Patios, Block Paving, Fencing
- Conservatories
- Porches, Doors & Windows
- Tiling
- Bathroom & Kitchens

ALL ENQUIRIES WELCOME

TEL 01954 232 241

MOBILE 07952 339 227

G B Builders

NO JOB TOO SMALL

FOR ALL MAINTENANCE RENOVATIONS
AND DIY WORK

All general building repairs & odd jobs
Specialist in Painting & Decorating
Groundwork & Grass cutting

- Fencing
- Brickwork & Plastering
- Plumbing
- Driveways, Paths, Patios
- Carpentry
- Slabbing
- Roofing
- Concreting
- Tiling
- Blockpaving
- Drainage
- Guttering

Call Today
07877 742420
Or 01480 437511
g.builders@yahoo.co.uk



**Chartered
Physiotherapist**

**Susannah Jennings BSc (Hons)
MCSP, HCPC, MAACP**



Musculo-Skeletal Injuries:

- Back & Neck Pain
- Muscle & Joint Pain
- Rehabilitation after Surgery
- Postural Conditions (including Post & Ante Natal)
- Mobility Difficulties

Treatments Available:

- Joint Mobilisation & Manipulation
- Soft Tissue Massage and Stretching
- Acupuncture
- Mobility Assessments
- Electrotherapy
- 1:1 Clinical Pilates
- Rehabilitation Programs

31 Thistle Green, Swavesey, Cambridge. CB24 4RJ.
Tel: 07970 548205

Email: susie@swaveseyphysio.co.uk
Web: www.swaveseyphysio.co.uk

F.W. COOK

FUNERAL SERVICE

49 Church Street Willingham

Tel Willingham 260325

Andrew Cook Dip FD Kay Cook Dip FD MBIE

A long established family business providing a personal 24 hour service

Golden Charter pre-payment funeral plans available

COOK'S MEMORIALS

New memorials and refurbishments
Brochures available on request



**Want to bring your outdoor
living ideas to life?**

Push your driveway, garden & outdoor living area to its
full potential with iScape Landscaping

- Paving & Driveways
- Decking & Fencing
- Water Features
- Hard Landscaping
- Turfing & Lawn Care
- Path & Patios

01954 202 232 | 07738 255 003
dan@iscapelandscapingcambs.co.uk
iscapelandscapingcambs.co.uk

A. R. CATER

Carpentry & Joinery

Established 1984



- KITCHENS •
- WARDROBES •
- CUPBOARDS •
- SECURITY LOCKS SUPPLIED & FITTED •
- COVINGS FITTED •
- UPVC FASCIAS, SOFFITS & GUTTERING •
- TILING TO KITCHENS & BATHROOMS •
- GENERAL PROPERTY MAINTENANCE •

*CALL TODAY FOR A
"FREE ESTIMATE"*

01954 - 232069

OR

MOBILE 07778 307578

IAN R NORMAN
HEATING AND PLUMBING



Gas Boiler Servicing- Domestic & Commercial

**Plumbing, Heating, Gas, LPG,
Landlords Certificates**

Tel: 07827 938150 Email: normanian@hotmail.co.uk

Cottenham based, covering all of South Cambs



DDB Home Solutions Limited

Making your house a home

We are a company based in Needingworth specialising in kitchen and bathroom installations and can also supply the following services;

- Carpentry and Joinery
- Plumbing
- Electrical installation – Part P registered
- Floor and wall tiling
- Less-abled Bathrooms and Wet Rooms



We are a member of the Institute of Carpenters and also the Guild of Master Craftsmen with over twenty years experience

Visit our website for more information - www.ddbhomesolutions.co.uk
For an informal discussion or quote please contact Darren or Jo Turnbull
Tel: 01480 495984, or email us at Darren@ddbhomesolutions.co.uk



ELECSA



Avenue

Property Management

Quality Property Rental service

A local, personal & professional approach to all aspects of property management & letting

We provide a friendly & efficient service to Landlords and Tenants supported by 22 years' property experience

We look forward to hearing from you for an informal chat

Tel: 01223 353 353 or 01354 691 560

enquiries@avenue-properties.co.uk



JK Reflections

restore:relax:renew

Massage

Facials

Relaxation techniques

Mindfulness

Tropic Ambassador – freshly made, vegan, cruelty-free, green skincare products. *Free Skincare consults in Swavesey/remotely.*

Website: www.jkreflections.co.uk

Email: jo@jkreflections.co.uk

Phone: 07714 625243

Facebook: JK Reflections

Gift Vouchers & e-vouchers

Professional Arborists based in Swavesey, Cambridge. We offer a free, no obligation quote. Advice on any trees/hedges. Deal with any conservation area or Tree Preservation Order Applications. A freindly, efficient service, leaving your garden or land clean and tidy.

Tree Felling / Dismantling

Crown reduction / thin / lift / deadwood

Pruning / Planting

Hedge trimming / reducing / removal

Stump Grinding

Seasoned logs

NPTC Qualified Staff
Full Liability Insurance



DELLAR

TREE SERVICES

30A Thistle Green, Swavesey
Cambridge CB24 4RJ

01487 740348 / 07703 568 474
dellartreeservices@hotmail.co.uk

R.A. Denton

Painting & Decorating

High Quality



Industrial

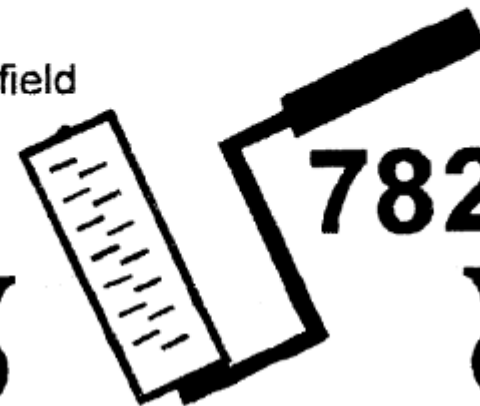
Commercial

Domestic



102, Stonefield
Bar Hill
Cambridge
CB3 8TB

782472



Put your love in writing

Be there for your family
when they need you most

- ✓ Protect your children and partner with a Will
- ✓ Look after elderly parents with Lasting Powers of Attorney
- ✓ Set up a Trust for a disabled child
- ✓ Protect your family's property and assets
- ✓ Minimise care home fees and funeral costs
- ✓ Reduce Inheritance Tax and Probate fees

**Take
action
today!**

Call, email or text Just Wills
for a FREE home consultation
Phone: **01223 655646**
Mobile: **07930 197432**
info@justwillscambridge.co.uk

Just Wills (Cambridge) is the local office of Just Wills & Legal Services Ltd. Since 1989 we've helped more than 150,000 families like yours plan for the future with our friendly, money-saving service and professional expertise. Call us for a chat and advice!

- Wills, Trust and Probate specialists
- Society of Trust and Estate Practitioners (STEP) qualified solicitors
- Backed by full professional indemnity insurance
- Member, The Society of Will Writers
- Member, Professional Association of Legal Services

JUST WILLS
Just Wills (Cambridge) LLP

Just Wills (Cambridge)
St John's Innovation Centre
Cambridge CB4 0WS



*For all your building requirements,
please contact Paul Hendry*

GEORGE HENDRY & SON **Building Contractors**

33 Wallmans Lane, Swavesey
Cambridge, CB24 4QY

Telephone: 01954 200613
Mobile: 07778686791
Email: prh.ghs@gmail.com

Eyes of Swavesey
Opticians



2 Station Road, Swavesey, Cambridgeshire, CB24 4DJ
T 01954 231158 E info@eyesoftware.com

Under new ownership.
For all your eyecare & eyewear needs.
Come to your local, friendly, professional
& caring optician at Eyes of Swavesey.



HIDDEN BEAUTY

BY REBECCA



NAILS | LASHES | WAXING | MASSAGE

Home based salon ready to offer you a range of lovely beauty treatments.

Whether it's a relaxing, stress relieving massage or facial, some fabulous eye lash extensions, or a pampering manicure or pedicure, Hidden Beauty is here for you!

Message or call to book.
20% off your first treatment

120 MIDDLE WATCH
SWAVESEY
07815443009
BECCASTART@HOTMAIL.COM
f HIDDENBEAUTYBYREBECCA
i HIDDENBEAUTYBYREBECCA

La' Mac

Hairdressing for all
the family



- ◆ Friendly Service
- ◆ Traditional & up to date styling
- ◆ Fully trained in all colouring techniques
- ◆ Senior Citizens discount (Tue & Wed)
- ◆ Open Tuesday - Saturday (late 7.00pm Thursday)
- ◆ Wedding and Ball packages

We aim to provide a professional yet friendly atmosphere to make your visit as pleasant an experience as possible. So if you are thinking of a change please pop in and ask for Wendy, Charlotte or Estelle. They will be pleased to help



01954 231 445

2a Market Street
Cambridgeshire

Swavesey
CB24 4QG

Swavesey Windmill

Hale Road Swavesey Cambridge CB24 4QP

Tel: 01954 232 247

Fantastic function hall with licensed Bar available for hire
for any event, set in the grounds of The Windmill.

Private parties, Fundraising
Charity Nights, & Band Concerts!

Licensed with Cambridge County Council
For Weddings, Civil Partnerships,
& Baby Naming Ceremonies

To book to view or hire please phone Pam or Lisa.
To keep updated on events follow
Swavesey Windmill on Facebook





Let me take care of your pet family!

- ☑FREE HOME DELIVERY
- ☑Local Cambridge Business
- ☑Quality Food at Direct Prices
- ☑Pet Food Treats & Accessories
- ☑All Ingredients Declared
- ☑Gluten Free & Hypoallergenic Foods
- ☑Let Me Deliver Your Cat Litter

Call Teresa & Stuart
your Cambridge Nutritional Advisors on
01954 712633 / 07516184185




OSCAR much more than pet food-
you call i fetch!

www.oscar.co.uk Search for Oscar Pet Foods Cambridge

Hassle free!



Norman - Witney

Local, family run business who thrive on transforming project dreams into a stunning reality!

Extensions – Conversions – New Builds – Groundworks – Bathrooms

Kitchens – Flooring – Electrical works – the list is endless!

www.ajcarpentry.co.uk

07989 341724 / 07812 671495

Special Fees apply for readers



114-116 Regent Street, Cambridge, CB2 1DP Tel: 01223 462 013

There's a reason these signs are everywhere... ..we're serious about your property

Call now for a free market appraisal
Tel: 01223 462013
Email: cambridge@morrisarmitage.co.uk

114-116 Regent Street, Cambridge, CB2 1DP Tel: 01223 462 013



The truly independent cruise & travel company
01954 232 802 | sales@ponderstravel.co.uk

The World of Travel is now in Over High Street.
Ponders Travel opened a new Travel Agency in January 2019.

Opening hours
Monday – Friday, 9.30am – 5.30pm
Saturday, 9.30am – 4.00pm

Pop in and see our new shop at The Gallery, 25 High Street, Over
Special Offers | Tailor Made holidays | 35 years' experience

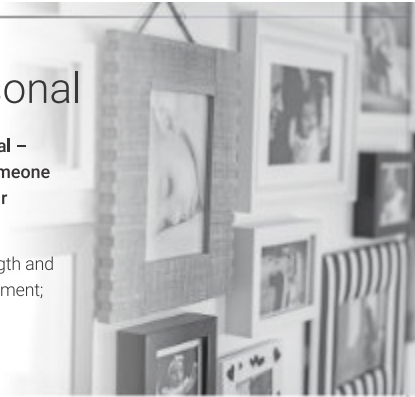
Contact us today for more information
01954 232802 | sales@ponderstravel.co.uk |
www.ponderstravel.co.uk

Financial advice made personal

We recognise that talking about money and finances is personal – sometimes sensitive. So it's reassuring to know that there's someone on hand who can help you address your needs, understand your goals and realise your dreams.

We offer a friendly and approachable service, backed by the strength and security of FTSE 100 company, St. James's Place Wealth Management; and being local means we're here to help whenever you need us.

Please do get in touch for a chat.



TAIT FINANCIAL SERVICES LTD

Associate Partner Practice of St. James's Place Wealth Management

Tel: 01954 231768 | 07768 305151
Email: james.tait@sjpp.co.uk
www.taitfinancialservices.co.uk



The Partner Practice is an Appointed Representative of and represents only St. James's Place Wealth Management plc (which is authorised and regulated by the Financial Conduct Authority) for the purpose of advising solely on the group's wealth management products and services, more details of which are set out on the group's website www.sjpp.co.uk/products. The 'St. James's Place Partnership' and the titles 'Partner' and 'Partner Practice' are marketing terms used to describe St. James's Place representatives.

SJP11596 V1 (12/19)

Contact us:
david@rosegatefarm.co.uk
07922 588171



Rose and Crown Road Road, Swavesey

Butchery Open Fridays (8.30 am - 5.30 pm) & Saturdays (8.30 am - 1.30 pm)

www.rosegatefarm.co.uk

Bespoke Butchery – butchered to suit your requirements

BEEF

- Primarily from our own Hereford / Angus herd
- All at least 21-day aged

LAMB

- Swavesey born and bred
- individual cuts, or ¼, ½ or whole lamb packs available

PORK

- Bred & reared here at Rosegate Farm.
- Home-made sausages, dry-cured bacon and gammons (smoked and unsmoked)
- Cooked Ham

CHICKEN (sourced from Diaper Poultry)

- Sutton Hoo Free Range
- St George Chicken

BBQ Meats – Burgers – Kebabs – Glazes

See you in the butchery!



STEPHANIE'S CARE

Care and Support in your own home

Offering Compassion, Kindness Confidentially
as well as Personnel Care to my clients

I am local so if you think I might
be able to help you please
contact me for an informal chat on
the phone or in your home

Telephone: 01353 777 789
Mobile: 07800 668 788

Qualified in Health & Social Care Level 3
18 years extensive experience
Fully Insured & Enhanced DBS Checked
Reference's are available

Rothwell's Carpet Cleaning

**Carpet, Stone Floor,
Upholstery & Rug Cleaning**

A few points that make us stand out,

Rothwell's has been in business since 1993
We're an honest local family firm.
Our large truck mounted machines mean
more cleaning & drying power
for the best results possible.
Members of both the NCCA and TACCA.
We will move the furniture.
100% satisfaction or it's FREE.

*Call Oliver and Max Campbell
for expert help today.*

01223 832 928
www.Rothwells.biz

embe.

Professional, Local Painting And Decorating

embe_pad @embepad 07931779042 mike@embe-pad.co.uk

www.embe-pad.co.uk

LIGHT REMOVALS

Small Houses to Single Items

ANY DISTANCE
7 Days a Week

For a Free Quote

Telephone:

01480 352220

07711 556833

www.cambslightremovals.com

Accountancy & Taxation Services



Tax Returns
Business Accounts
Bookkeeping
VAT Returns
Payroll
Audits

L.A. Wells FCCA CTA

Chartered Certified Accountant, Chartered Tax Advisor

4 Scone
Fenstanton
Huntingdon
Cambridgeshire
PE28 9QG

Tel: 01480 466 197



www.lwells.co.uk

ANDREW EVANS

01954 780 999 – 01223 864335

email: andrew@omegaclean.co.uk

www.omegaclean.co.uk

- ✓ Carpet Cleaning
- ✓ Upholstery Cleaning
- ✓ Tile & Grout Cleaning
- ✓ Leather Cleaning
- ✓ Oriental Rug Cleaning
- ✓ Carpet & Fabric Protection
- ✓ Allergy Relief Treatment
- ✓ Odour Eradication
- ✓ Stain Removal
- ✓ Carpet Fitting

Family Business Since 1980



Open 6 days a week
**Total
Relaxation**
at the farmhouse

Tel: 01954 789 344

Aromatherapy, Body Massage, Indian Head Massage, Reflexology, Hot Stone Massage, Hopi Ear Candles, Facials, Nail Extensions, Manicures & Pedicure, Gel Polish, Lash and Brow Treatments, Waxing, Hairdressing

Gift vouchers always available

www.total-relaxation.co.uk

email: total.relaxation@ntlworld.com

The Old Farmhouse, Gladeside, Bar Hill, Cambridge CB23 8DY

ARE YOUR WINDOWS
READY FOR THE SUMMER ?

Give them a new lease of life with CST

NO CALL OUT CHARGES

All repairs carried out on UPVC,
Aluminium or Timber Installations

- ▶ Windows, Doors, Conservatories
- ▶ Conservatory Roofs
- ▶ Misted or Broken Glass
- ▶ Broken Handles, Hinges and Locks
- ▶ Cat Flaps and Letter Plates
- ▶ Door panel fitting

C.S.T

DOUBLE GLAZING REPAIRS
& Lock Maintenance

Tel: 01480 462 948

Mob: 07973 682562

www.cstupvcrepair.co.uk

cst.dgcrepairs@googlemail.com

T.N. WALSH (AIP-RP)

PLUMBING & HEATING

5 ACORN AVENUE
BAR HILL
CAMBRIDGE
CB23 8DT

TELEPHONE 01954 780252

MOBILE 07887 561525



Reg. No.
23354



026851 I

Stamp Chiropody & Podiatry
Casey Stamp MCPod BSc (Hons)
HCPC registered CH15068



- General chiropody – nails, hard skin & corns
- Diabetic foot care
- Children's Feet – Growing pains, Verrucas, etc.
- Sporty Feet & associated injuries + pains
- Ingrowing toe nails
- Custom made Orthotics/insoles
- Dancing feet – we'll keep you on your toes
- Biomechanics & Gait analysis

New Clients Always Welcome.

Find us at:

Willingham Medical Practice,
 52 Long Lane, Willingham,
 Cambridge, CB24 5LB

Tel: 01480 464507 or 07807505534

Also available at:

Salus Wellness Clinics
 47 Norfolk St

Cambridge CB1 2LD

Tel: 07807 505534

www.stamppodiatry.co.uk

CHIMNEY SWEEP
Cambridgeshire
Trading Standards
Approved



- Fully Insured
- Enhanced CRB Check
- Certificates issued
- Bird nests removed
- All types of chimney swept
- No Mess, No Fuss



MAKE AN APPOINTMENT
 TODAY WITH

SWEEPOVER

Tel: 01954 230777

Mob: 07779711458

www.sweepover.co.uk

19 New Road, Over, CB24 5PJ



The Ultimate
FLOOR SANDING
 Company

AFFILIATED SERVICE PROVIDER

Dust Free
Wood Floor Sanding
& Restoration

Is your Wooden Floor in need of
 Sanding?

Call us today **01223 863 632**

Please quote "Swavesey Mag"

www.floorsandingcambridge.co.uk



Discover...

A selection of beautiful individual villas & houses with pools in
 tranquil settings & areas of traditional local culture.

GREECE • SPAIN • LANZAROTE • BALEARICS
 PORTUGAL • FRANCE • ITALY • CROATIA

Vintage
 travel

Now in our 22nd year

Your
 Local Holiday
 Company

Call for a brochure or to speak to one of our specialists

01954 261431

or visit our website www.vintagetravel.co.uk



Delicious
 & delivered

- FREE NATIONWIDE DELIVERY
- MEALS FROM ONLY £2.99
- OVER 300 TASTY RECIPES
- NO CONTRACT,
 NO COMMITMENT

Call us for your **FREE** brochure

01371 876970

wiltshirefarmfoods.com



Wiltshire Farm Foods



MAGAZINE ADVERTISING RATES

ADVERTISING RATES AS FROM JANUARY 2021.
For a one year inclusion i.e. six issues.

Size	Advertiser	Magazine
Full page	£196	
Half page	£100	£143
Quarter page	£66	£88

The following rates are for one inclusion only and as a premium rate is already charged will be positioned in the magazine section:-

Half page one inclusion only £75

A small charge may be made for creating and amending artwork

For all advertising details please contact:

David Gedny Tel: 01954 231305 Mob: 079 022 40061 or

Email: adverts@swaveseymeridian.org.uk

EXTRA MAGAZINES

Send a Meridian Magazine subscription to your favourite Auntie, or to a friend who has recently left the village.

Six issues (one year) costs only £12.00.

Send a cheque (made out to 'The Meridian Magazine') and the address of the recipient, to:

Jan Waller, Meridian Subscriptions,
35 Carters Way, Swavesey, Cambridge, CB4 5RZ

NOTIFICATION OF MAJOR EVENTS

Please use this form to notify us of any major events you are organising so that we can publish the dates in the magazine and on the website at www.swaveseymeridian.org.uk. It is hoped this will avoid major events clashing on the same day. Please send to the Editor, 14 Black Horse Lane, Swavesey.

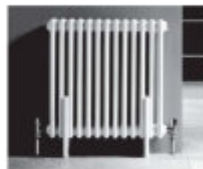
Event _____

Location _____ Date _____ Time _____

Contact Name _____ Tel No. _____



Plumbing and heating supplies
to the trade and public



We are a local independent company supplying
all your plumbing & heating needs, including:

**Bathroom Taps • Boilers • Bathroom Suites
Underfloor Heating • Central Heating Radiators
Heated Towel Rails • Showers • Kitchen Taps
Sinks • Baths • Sanitaryware
Plastic Plumbing Systems • Fittings**

Do not hesitate to ring, email or visit...



Unit 10, Norman Way Industrial Estate, Over, Cambridge CB24 5QE.
Tel: 01954 230268. E-mail: info@dandtsupplies.co.uk. www.dandtsupplies.co.uk

BIRTHDAYS, ANNIVERSARIES & SPECIAL OCCASIONS

If you would like to mark any occasion that is special to you or somebody that you know by announcing it in this magazine, please fill in the form below.

Also supply your name and contact details, and return to the Editor by the copy date. We will endeavour to include it in our next issue.

SHORT MESSAGE:

USEFUL TELEPHONE NUMBERS & WEBSITES		
Doctor's Surgery (Swavesey)	01954-230202	
Doctor's Surgery (Over)	01954-231550	
Police:		www.cambs.police.uk
Emergency	999	
All Non Emergency Calls	101	
Swavesey Neighbourhood Watch	07830 110062	www.swavesey.org.uk/neighbourhood-watch/
Swavesey Pre-school Enquires	01954 273312	preschool@swavesey.cambs.sch.uk
Swavesey Primary School	01954-273312	www.swavesey.cambs.sch.uk/
Swavesey Village College:	01954-230366	www.swaveseyvc.co.uk
Community Office	01954-230373	
Swavesey Post Office	01954-232311	
Cambridgeshire County Council:		www.cambridgeshire.gov.uk
General Enquiries	0345 045 5200	
Library Service	0345 045 5225	www.cambridgeshire.gov.uk/leisure/libraries
South Cambs District Council	0345 045 0500	www.scams.gov.uk
Electricity (UK Power Networks):		
Emergencies	0800-7838838	www.ukpowernetworks.co.uk
Gas Emergencies (National Grid)	0800-111999	www.nationalgrid.com/uk/gas
Water (Cambridge Water Company):	01223-706050	www.cambridge-water.co.uk
Sewage (Anglia Water) Emergency	08457 145145	www.anglianwater.co.uk
Environment Agency (Flood Line):	0845 988 1188	www.environment-agency.gov.uk
Incident Reporting Line (pollution etc)	0800 807060	
Samaritans	08457-909090	www.samaritans.org.uk
Addenbrooke's Hospital:		www.addenbrookes.org.uk
Accident & Emergency	01223-217118	
General	01223-245151	
Hinchingbrooke Hospital	01480-416416	www.hinchingbrooke.nhs.uk
NHS Direct	111	111.nhs.uk
Airports + Road & Rail:		
Local Taxi: Alpha Cars	01954 232300	www.alphacarsonline.co.uk
Gatwick	0844 3351802	www.gatwickairport.com
Heathrow	0844 3351801	www.heathrowairport.com
Luton	01582-405100	www.london-luton.co.uk
Stansted	0844 3351803	www.stanstedairport.com
Traveline (Bus Coach & Rail)	08706-082608	www.traveline.org.uk
Transport Direct (Coach, Rail, Flight)		www.transportdirect.info
Local Timetables:		
Cambridgeshire CC Bus Information		www.cambridgeshire.gov.uk/transport
Stagecoach	01223-423578	www.stagecoachbus.com
National Express Coaches	0871 7818178	www.nationalexpress.com
Whippet Coaches	01954-230011	www.go-whippet.co.uk
National Rail	08457-484950	www.nationalrail.co.uk
Veterinary Practices:		
Village Vet (Longstanton)	01954-780027	www.villagevet.co.uk
Ash Croft (Hardwick)	01954-210250	www.ashcroftvet.co.uk

Swavesey's VILLAGE CAROLS

Saturday 18th December from 5pm
at Swavesey Primary School

Living Nativity, Warm food, Mulled wine and Mince
pies, Dress up to be part of the Nativity!

6pm start for Christmas Carols with a Brass Band

We are expecting a special guest appearance
from Father Christmas on his sleigh too!



PANTO IS COMING BACK TO
SWAVESEY

**Swavesey RADSOC Invites
you to come see**

Ali Baba
And the 40 Thieves!

A Family Pantomime by Julie Petrucci & Chris Shinn

January
28th - 30th

SWAVESEY VILLAGE COLLEGE

Book tickets online from
www.swaveseyradsoc.org.uk

Or Call 07504 522 870

See you there x

