

# THE MERIDIAN SWAVESEY



No. 194 February/March 2022

## Swavesey Community Warden Scheme

**Are you aged 60 or over?**

**Would you like help to continue to live independently in your own home?**

**The Community Warden is able to offer assistance by providing a daily phone call (Mon-Fri) and support such as:**

- **Making drinks and a light meal**
- **A home visit**
- **Collecting prescriptions**
- **Small items of shopping**
- **A listening ear**
- **Help with paperwork and making appointments**
- **Signposting to other services where appropriate**

If you are interested in this service and would like more information, please call **07436102736** or email **wardens@ageukcap.org.uk**

There is a **FREE** 2-week trial and then a small weekly fee afterwards if you wish to remain on the scheme.

### EDITORIAL

Your editor is aware that there have been a few comments at the last issue being slimmer than usual. Future editions may also be slimmed down. Why? Simple economics I am afraid, we have to print more copies due to the new housing developments and the cost of paper and ink is most probably going to rise. In addition, we have lost some advertisers. If you are interested in advertising with us get in touch - adverts that appear in the magazine also appear on The Meridian website at no extra cost!

We have to increase the cost of advertising from 1st April to ensure we can still supply a free copy to every residence in the village. Remember we are volunteers we do not get paid to produce the Meridian. There are a lot of local enterprises in our village use them or lose them!

Important local elections in May more information on these inside and also on the Parish Council website,

Lighter nights will be welcome I am sure - and the prospect of warmer weather. the deadline for the next issue is 20th February which covers the April/May issue

Editor

Cover Image - Swan Pond Reflections by Edwin Parish  
 Inside Front Cover - AgeUK - Warden Scheme  
 Inside Back Cover - Swavesey Library  
 Back Cover - Girlguiding Poster

#### IN THIS ISSUE ...

Editorial	page 1
Meridian Committee	page 2
Major Events List	page 2
Dates for your diary and forthcoming events	page 3
Club Reports	page 4-10
Miscellany	page 12-22
Medical News	page 26
School Information	page 27-32
Parish and County news	page 33-38
Churches	page 38-40
Community Groups & Charities table	page 41
Club Information	page 42-44
Advertiser	page 45-70
Extra Magazines, Major Events & Birthday forms	page 71
Useful Telephone Numbers	page 72

## MERIDIAN COMMITTEE

Editor:	April Martin	Tel: 01954 200533
Treasurer	David Gedny	Tel: 01954 231305
Production:	Alan Morris	Tel: 01954 202664
Advertising:	David Gedny/Selwyn Richardson	Tel: 01954 231305 / 07902 240061
Distribution	Selwyn Richardson	Tel: 01954 202974
Subscriptions	Jan Waller	Tel: 01954 230795
Complaints	Maureen Hadfield	Tel: 01954 230414
Proofreading	Alison Lucas	Tel: 01954 232984
Website:	Alan Morris <a href="http://www.swaveseymeridian.org.uk">www.swaveseymeridian.org.uk</a>	Tel: 01954 202664
Emails:	<a href="mailto:editor@swaveseymeridian.org.uk">editor@swaveseymeridian.org.uk</a>	
	<a href="mailto:adverts@swaveseymeridian.org.uk">adverts@swaveseymeridian.org.uk</a>	
	<a href="mailto:webmaster@swaveseymeridian.org.uk">webmaster@swaveseymeridian.org.uk</a>	

### Major Events List

This list is intended to avoid major events clashing on the same day. It will only work if we are advised of all such events, so please let us know as soon as you can confirm the details.

A form is available at the back of this magazine. We will list them in this section of the Magazine and also on our website at [www.swaveseymeridian.org.uk](http://www.swaveseymeridian.org.uk)

Wednesday 13 April	Parish Council	Annual Parish Meeting
--------------------	----------------	-----------------------



## DATES FOR YOUR DIARY



### February

Thursday 3	Refuse Collection	Black Bin Collection
Thursday 10	Parish Council	PC Planning Meeting, 7.30pm Memorial Hall
Thursday 10	Refuse Collection	Green & Blue Bins
Thursday 17	Refuse Collection	Black Bin Collection
Thursday 24	Refuse Collection	Blue Bin Only
Monday 28	Parish Council	PC Full Council Meeting, 7.30pm Memorial Hall

### March

Thursday 3	Refuse Collection	Black Bin Collection
Thursday 10	Parish Council	PC Planning Meeting, 7.30pm Memorial Hall
Thursday 10	Refuse Collection	Green & Blue Bins
Thursday 17	Refuse Collection	Black Bin Collection
Thursday 24	Refuse Collection	Green & Blue Bins
Monday 28	Parish Council	PC Full Council Meeting, 7.30pm Memorial Hall
Thursday 31	Refuse Collection	Black Bin Collection

### April

Wednesday 13	Parish Council	Annual Parish Meeting
--------------	----------------	-----------------------

## CLUB REPORTS

### WHAT NEXT

Once again, none of us know where we are going with this pandemic, who would have guessed we would still have so many questions after all this time. However, one must think positive, and as our wise president, Simon, has pointed out, our exciting programme can as easily be presented digitally as face to face. In fact, because some of us are elderly /infirm/ otherwise indisposed we have been holding hybrid meetings for a couple of months, so we are half way there. It was a little disappointing to have a virtual Presidents Evening / Christmas party once again, but needs must.

By now we will either have been let out again, or enjoying our evenings in the comfort of our own homes with the added luxury of avoiding inclement weather, dark village roads and ice. With two Friendly competitions planned it usually means only one or two members can drive to an Away night, on Zoom we can all join in. The first is an Away with Ely PC on 23rd Feb (Wednesday) and the second is at Home with St Neots and District CC on 24th March.

We have another Set Subject Competition, 'Myths, legends and Fairy Tales', on 3rd March and there will be a helpful Critique evening on 17th Feb when one can get helpful feedback from other members.

Our first talk is from the well known Colin Westgate, 'The Expressive Landscape', on 24th Feb, already planned to be on Zoom. On the 10th March we have what promises to be a very helpful talk from Derek Middleton, a professional with expertise in Long Exposure Photography. Another useful talk, again already on Zoom, is from David Hogg on the uses of Drone Photography, on 17th March.

It is always helpful to keep your eye on our website, and especially so at this uncertain time. We did have a Club Outing planned to Cambridge on 15th Feb, which might still go ahead if restrictions are not tightened. We have two Members Nights when the more experienced amongst us generously share their knowledge, details to be announced nearer the time. These will be on 10th Feb and 31st March.

Whether on Zoom or at the College visitors are always welcome. Just go to Contact on the website, there is a modest charge of £4.

Mo Hadfield.  
Swavesey Camera Club  
[www.swavesey\\_camera\\_club.co.uk](http://www.swavesey_camera_club.co.uk)

## ALAN'S CARPETS

### Carpets and Vinyl Supplied and Fitted

We have been in the carpet trade  
for over 47 Years!

Samples To Your Home

Measure

Quote

Express delivery & fitting included

Phone 07790 681317

or

07790 544250

## CHIMNEY SWEEP

### J. L. Wight

City & Guilds Qualified

Advice given /  
Problems solved



Certificates issued

Fully Insured

HETAS registered



**01954 253315**

[www.camsweep.co.uk](http://www.camsweep.co.uk)

26 Cow Lane, Rampton

### R. A. Miller

#### Plumbing and Domestic Heating

Fenside, 71 Willingham Road, Over  
Cambridge CB24 5PE

Tel: 01954 203277 Mob: 07831 853885

Email: [robert.miller@ntlworld.com](mailto:robert.miller@ntlworld.com)

#### All plumbing work undertaken

- » New boiler replacement and installation with free quotation.
- » GAS boiler and GAS fire servicing  
Landlord Certificates.
- » Heating problems - Diagnosis  
and rectification.
- » General plumbing - taps, washers,  
pipework, showers, etc.
- » Full and partial Bathroom installation work.

For a reliable and professional service

Robert Miller MCIPHE RP



Office 01954 203 277  
Mobile 07831 853 885



# FDS

(CAMBRIDGE) LTD

01353 779754

fdssales@outlook.com

www.fds.cambridgeltd.co.uk



GRAB/TIPPER HIRE



AGGREGATE SUPPLIES



PLANT HIRE

PRIVATE AND TRADE WELCOME

**SOILS – SANDS – GRAVELS – SLEEPERS**

**HARDCORE – DIGGERS – DUMPERS**

**DOZERS - FORKLIFTS**

**CALL US ON 01351 779754 or 07921 777550**



FDS Cambridge LTD



fds\_grabhire

## Swavesey WI

December's WI meeting found members getting in the Christmas mood and enjoying "Festive Desert Island Discs". Several members chose favourite pieces of music and told us all the reasons why they had these special Christmas memories.

This provided a varied music list and we were able to sing along. Our glasses were topped up through the meeting and light refreshments were served by the Committee.

Christmas cards were distributed and each member present received a gift for Christmas. Margaret Guest, President wished everyone a very Happy Christmas and thanked everyone for making the meeting so jolly!

We are looking forward to the New Year and our new programme and we will be starting off with a Quiz for members on January 10th.

For more information on our Walking Groups please ring Clare Fox 202882.

On the second Thursday of the month our WI serve coffee and homemade cakes at the Compass Cafe.

Our monthly meetings are on the second Monday of the month in the Memorial Hall at 7.30pm. All women are welcome. We have a varied programme and joining WI is a great way to make new friends.

For more information on anything we do, please ring Margaret Guest 01954 202757 / Deirdre Burgess 01954 230897.

## Swavesey Festival 100 Club

Three winners each month receive £60 or £30 or £15.

To be added to the waiting list to take part in this popular competition phone Gill Hurst on 01954 200470.

Latest winners are:-



	£	November 2021	December 2021
<b>First prize</b>	60	Bamidele Amure	Richard Harrison
<b>Second prize</b>	30	Neville Tait	Derek Shaw
<b>Third prize</b>	15	Vera Doggett	Vicki Russell

## Swavesey & District History Society

November meeting. Thirty members heard Nigel Fenner of Fen Drayton speak on "The history of sport in Cambridge – cradle of a leisure revolution". During the Victorian and Edwardian periods Cambridge was the main driving force of the sport leisure revolution that swept across the world. Following is a small selection from the abundant evidence provided.

In 1857 the Cambridge Independent Press reported that a bandy (ice hockey) match was staged at Mere Fen between the villages of Swavesey and Over on February 5, 1857. This is the earliest contemporary reference in the UK for a sports event which lists the complete line-ups of each team in a newspaper. Swavesey won.

Cambridge was deeply involved in establishing the world's most popular sports and Cambridge created most of the rules. Thus, the Cambridge News reported that on 12 May 2018, at the fire station corner on Parkers Piece, a statue was installed celebrating the single set of football rules written down by Cambridge students 170 years earlier (in 1848) that have gone on to shape the modern game. Nigel himself played football in the university match between Cambridge and Oxford at Wembley Stadium in 1982

John Graham Chambers had a distinguished college career rowing for Cambridge and was President of the Cambridge University Boat Club. In 1866 he founded the Amateur Athletic Club and through this, in 1867, he established the Marquess of Queensberry Rules upon which modern-day boxing is based.

Charles Kingsley, author of *The Water Babies* (1863) was a Cambridge Professor of Modern History and established Muscular Christianity, a philosophical movement which believed in patriotic duty, discipline, self-sacrifice, masculinity, and the moral and physical beauty of athleticism. It promoted "Sport for all".

Nigel is a close descendant of Frank Fenner who was born in Cambridge in 1811. He was an outstanding administrator as well as a good cricketer. He embraced "Sport for all" and pioneered town and gown playing sport together. In 1846 he leased a former cherry orchard from Gonville and Caius College for the purpose of constructing a cricket ground. In 1848 he sub-let the ground to Cambridge University Cricket Club. Fenner's first hosted first-class cricket in 1848, with Cambridge University playing against the Marylebone Cricket Club (MCC).

December meeting. On a dreadfully cold, wet and windy evening 21 hardy souls turned out for the AGM. After the formal proceedings Carole Pook of Swavesey first reported the drama of one of her ancestors who, in 1808, stood trial at The Old Bailey accused of stealing three entire glass mirrors and a damaged mirror from a house. Together these were valued at over £4 and if the proceedings found that he had stolen them all in a single operation this would be a capital offence, punishable by hanging. It was discovered that he had been working at the house for some time and the jury was eventually persuaded that he had not stolen items worth more than £1.95 in any single offence so instead of being hung he was given a 6 month prison sentence.

Carole then told the story of two ancestors of her husband John who, in 1829, were witnesses in a murder trial. This involved a farm labourer in Devon who served his wife with clotted cream and scones which were each laced with rat poison supplied by John's relatives. The man might have got away with it if he had not thrown the spare scones to

his neighbour's chickens who subsequently died. He absconded to Wales but was brought back by the police. He was hung and his body was ordered to be given up to surgeons for study.

Roger Hetherington from Over reported on a landscape archaeology course he is undertaking which studies the connection between the substantial Bronze Age communities on the Fen Edge to the north-west of Over and local village communities today. Possible Romano-British influence was also discussed briefly including reference to "Lavinia", a Roman skeleton found in the Church End area of Over. Roger lives in Chain House in Chain Road (now known as Overcote Road). He outlined the course of the Chain Ditch which was probably used to transport limestone blocks on Fenland barges from the river Great Ouse to build St Mary's Church after being shipped from the famous quarry at Barnack near Stamford.

Next meeting: - 26 April. The Inns and Outs of Pub names. Mark Pardoe.

## Hale Road Allotments

It's always fairly quiet on the site over the depths of the winter. Most crops have been harvested with just a few parsnips and sprouts left around after Christmas dinner! Onions and broad beans planted in the autumn will hopefully be ticking over waiting, like us all, for the warmth of early spring.

In the late autumn when the weather remained a little warmer, plot holders were busy clearing the remains of crops from last year and spreading manure on the soil in the hope that it will result in huge yields next year! With the cold, damp days now upon us, we will all be perusing the seed catalogues contemplating new varieties for next year.

2022 marks the 10<sup>th</sup> anniversary of the Hale Road Allotments. Looking at the site, it is difficult to remember how it all looked back in September of 2012. I and other original plot holders will remember, though, how heavy the soil was back then. There really were times when it was too solid to get a fork in it! Many many barrow loads of soil improver, horse and cattle poo later and now we have plots with beautifully workable soil and a site that looks as though it has always been there. I am reliably informed that we have one of the smartest allotment sites in the area. Something to be proud of, I think.

Last year we had two very successful produce sales on Market Street Green and we thank everyone who supported them by buying, and hopefully enjoying, some of the freshest vegetables you will ever get. Look out for further sales this summer.

If you are reading this and think that you may be interested in growing your own fruit and vegetables, whilst also enjoying plenty of exercise and fresh air thrown in as well, you would be welcome to join the waiting list for either a full, or half plot. If you'd like to know more about the realities of allotment growing, or would like your name added to the waiting list, please do give me a ring. We can have a chat or even arrange a walk around the site. My details can be found in the club information section of the magazine

Val  
Chairperson.

The winter is a busy time on the reserve as we go around the different habitats carrying out work to maintain and improve them for target breeding species. Come the spring this work must finish to prevent disturbance to the wildlife. So, it is always a bit of a race against time and the weather to get to as many areas as possible.

As in previous years, the reedbeds on Holywell and Elney Lakes have been a priority for our volunteer work groups. We go in to remove willow trees growing amongst the reeds. This is to entice one of Britain's most secretive and rare species, the bittern, to call Fen Drayton Lakes home.



*Eurasian bittern, Botaurus stellaris, standing in reedbed habitat – Ben Andrew (rspb-images.com)*

Bitterns are medium-sized, brown herons and are reedbed specialists. They are very secretive and difficult to spot as they stalk silently through reeds looking for fish. Bitterns are one of our conservation success stories. In 1997 there were just 11 territorial breeding males in the country due to loss of habitat. Following a concerted effort to save this species, that number has increased to around 200 in the UK with 2 of those being with us at Fen Drayton Lakes.

Working in amongst the reeds by Holywell Lake can be a bit treacherous as there is standing water and you are presented with a wall of reed stems to push through. Surrounded by vegetation taller than you, it is easy to lose your bearings! But it is a unique experience spending time in the habitat of a bittern.

During our work, occasionally you spot the thin trunk of a willow. These are targeted for removal. If they were allowed to grow tall it would mean that fewer reeds would grow.

Over on Elney Lake we have also removed spindly willows from one of the islands to open up new reedbed. You may notice the eastern half of the lake is quite open now.

Thanks to this work, bearded tits have also colonised and were confirmed to breed on the reserve for the first-time last year. Listen out for their pinging call if you are at any of the lookouts surrounding the lake. You'll be very lucky to see them though as they blend in with the golden-brown reeds very well indeed.

Thanks to the hard work of the volunteers, Fen Drayton Lakes will hopefully be home to a growing number of these rare reedbed specialists in the years to come.

Email: [fendraytonlakes@rspb.org.uk](mailto:fendraytonlakes@rspb.org.uk)

Phone: 01954 233260

Visit [rspb.org.uk/fendraytonlakes](http://rspb.org.uk/fendraytonlakes)

The Royal Society for the Protection of Birds (RSPB) is a registered charity: England and Wales no. 207076, Scotland no. SC037654

Visit our truly stunning display gardens ...



**Probably the largest display centre in the UK, selling directly to trade and the general public**

Bannold are one of the UK's largest independent suppliers of natural hard landscaping materials. We stock natural products sourced directly from the UK and around the world enabling Bannold to offer premium products at the most competitive rates to trade and the general public.

- Natural Paving • Setts and Paviours • Stone Walling
- Decorative Gravels • Rockery • Boulders • Waterfeatures
- Topsoils • Soil Improvers • Bark Mulches • Sands
- Hardcore and Cements



Capability Barns  
Huntingdon Road  
Fen Drayton  
Cambridge CB24 4SD

Freephone: 0500 012231  
or 01954 231666

Opening Times:  
Mon-Fri 07.30 till 5.00  
Saturdays 09.00 till 1.00

[www.bannold.co.uk](http://www.bannold.co.uk)



# MISCELLANY

## It Will Probably Be Cloudy...

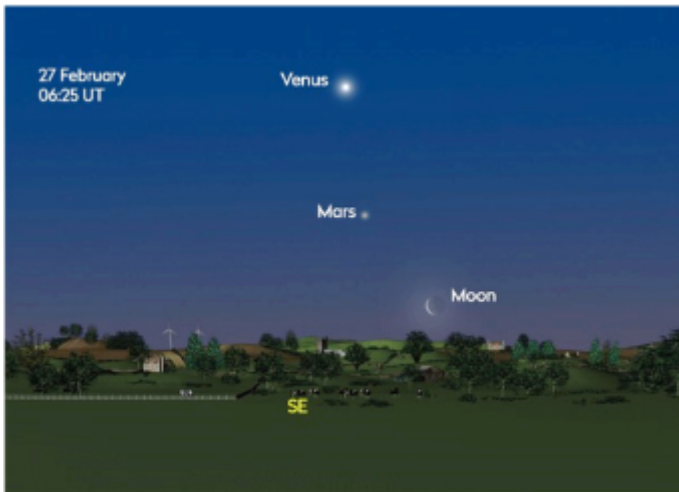
A guide to the night sky over Swavesey during February and March.

After the excitement of three meteor showers in December and January, February and March are a much quieter time for astronomical events. But it does offer the opportunity to have a look at some of our solar system's other planets.

On the 7<sup>th</sup> February, Uranus, which is the seventh planet from the Sun, will be visible in the night sky above the first-quarter Moon. Shining at mag. +5.7, and with the bright waxing Moon in view, you will have to reach for your binoculars to see this icy planet.

Venus is the morning 'star' throughout most of the year and is easy to identify because of its exceptionally bright appearance. The planet closest to us forms a dazzling conjunction with Mars on the morning of 27 February.

If you can locate the waning crescent Moon hanging low in the southeast, then look to its left and you will easily see Venus shining brightly above Mars. Venus is at its best and brightest in the early mornings throughout the first half of March, and worth getting out of bed for.



The full moon on February 16<sup>th</sup> was known by early Native American tribes as the Snow Moon because the heaviest snows usually fell during this time of the year. Since hunting is difficult, this moon has also been known by some tribes as the Hunger Moon, since the harsh weather made hunting difficult.

Also on 16<sup>th</sup> February, the planet Mercury reaches greatest western elongation of 26.3 degrees from the Sun. This is the best time to view Mercury since it will be at its highest point above the horizon in the morning sky. Look for the planet low in the eastern sky just before sunrise.

The full moon on 18<sup>th</sup> March was known by early Native American tribes as the Worm Moon because this was the time of year when the ground would begin to soften and the

earthworms would reappear. This moon has also been known as the Crow Moon, the Crust Moon, the Sap Moon, and the Lenten Moon.

Very prominent in the night sky during February and March is the constellation of Orion, which is one of the brightest and best known constellations in the night sky.



Orion has been known since ancient times. The constellation is also known as the Hunter, as it is associated with one in Greek mythology, the mythical hunter Orion, who is often depicted in star maps as either facing the charge of Taurus the bull, pursuing the Pleiades sisters, represented by the famous open cluster, or chasing after the hare (constellation Lepus)

with his two hunting dogs, represented by the nearby constellations Canis Major and Canis Minor.

The constellation Orion contains two of the ten brightest stars in the sky – Rigel and Betelgeuse, a number of famous nebulae – the Orion Nebula, De Mairan's Nebula and the Horsehead Nebula among others, the well-known Trapezium Cluster, and one of the most prominent asterisms in the night sky – Orion's Belt.

The constellation Orion has its origins in Sumerian mythology, specifically in the myth of Gilgamesh. Sumerians associated it with the story of their hero fighting the bull of heaven, represented by Taurus. They called Orion URU AN-NA, meaning "the light of heaven." Their name for the constellation Taurus was GUD AN-NA, or "the bull of heaven."

In Greek mythology, the hunter Orion was the most handsome of men. He was the son of the sea god Poseidon and Euryale, the daughter of King Minos of Crete. In Homer's *Odyssey*, Orion is described as exceptionally tall and armed with an unbreakable bronze club.

In one myth, Orion fell in love with the Pleiades, the seven sisters, daughters of Atlas and Pleione. He started pursuing them and Zeus scooped them up and placed them in the sky. The Pleiades are represented by the famous star cluster of the same name, located in the constellation Taurus. Orion can still be seen chasing the sisters across the sky at night.

Chris & Helen Nunn



# OpenArch

## OFFICES TO LET



### The Grange, Swavesey

The Grange located on Market Street is a 19th century building set in its own landscaped grounds in the centre of the village. The property provides high quality office accommodation with a private gated car park. There are various suites available on the ground floor, first floor and second floor.



### The Stable Block, Swavesey

Well presented, **open plan offices up to, 979 sq ft** available to let within a pleasant working environment with landscaped grounds and private gated car park. The Stable Block comprises a **detached two storey office building** forming part of an attractive office development. The property provides open plan offices and board / meeting rooms at both ground and first floor levels along with a kitchen and WC's with shower. The office benefits from good specification, an **external seating area** and up to **10 car parking spaces**.

For more information please contact us:

01223 644210

[jamie.johnson@openarch.co.uk](mailto:jamie.johnson@openarch.co.uk)

[www.openarch.co.uk](http://www.openarch.co.uk)

## Swavesey 100 Years ago (Feb & March 1922) From the Cambridge Chronicle

**MARKET TICKETS.** 3rd Feb. 1922 - Commencing on the 2<sup>nd</sup> inst., market tickets will be issued from Swavesey station as follows: Mondays and Saturdays, to Cambridge, return fare 2s. 3d.; Mondays, to St. Ives, return fare 8d.; Thursdays, to Ely, return fare, via Cambridge, 4s. 6d., via Sutton, 3s. 11d. Passengers must, however, leave Swavesey by trains due before 2 p.m.

**A DRAINAGE QUESTION.** 10th Feb. 1922 - A report is current in the village that the overflow from the cesspools, which take the drainage from the newly-erected Council houses, either runs into, or is about to be run into, the open drain which passes close to the backs of the National School and neighbouring houses, and thence under the bridge in High-street, along the front of Turn Bridge Cottages (Papworth's Cottages). This open drain has in times past been the cause of unpleasant odours, and of numerous complaints, and some years ago the sewage of the High-street district which fell into it at the bridge was diverted at no small cost into pipes, with the view of abating the nuisance. But even this relief did not entirely remove all cause for complaint, and it is feared that if the overflow from the cesspools at the Council houses is allowed to enter the drain the odours arising therefrom will be as objectionable as in days gone by. The possibility of a nuisance would be minimised if there was a regular flow of water along the drain, but unfortunately, except in times of heavy rain or of flood, there is practically none.

**RETURNED FROM HOLLAND.** 24th Feb. 1922 - The card attached to a miniature balloon sent up by Mr. Harold Beales in the Swavesey balloon race last September has been returned within the past few days from Holland. The finder, P. Scherpenige, Weststraat, Oosterland, Zeeland, states that the balloon, which he is keeping as a souvenir, and the weather-stained card were picked up recently in a field at Dykblok, by Nieuwerkek, Holland. Several of the other balloons found their way to Germany.

**POSTAL NOTICE.** 3rd March 1922 - Commencing on the 1<sup>st</sup> inst., the latest time for posting at Swavesey Post Office for the night mail despatch will be 7.15 p.m. instead of 7.25 p.m. - **ROYAL WEDDING.** 3rd March 1922. A few flags were displayed from private houses in the village on Tuesday in honour of the marriage of Princess Mary, and the school children had a day's holiday.

**MOTOR COLLIDES WITH HOUSE.** 10th March 1922 - Shortly after 7 p.m. last Friday a motor lorry, in turning to enter the gates of the White Horse Inn yard, was backed across the roadway, and came into contact with the front of Mr. P. S. Spring's house, forcing in a window frame and damaging the brickwork.

**PARISH PUMPS.** 24th March 1922 - Two pumps of the old, but now condemned, village water supply, namely, those at the corner of Black Horse-lane, and near Trinity College Farm, Middle Watch, have been thoroughly repaired and renovated by Messrs. Branson and Bagley, Over, by direction of the Parish Council.

**SUMMER TIME.** 31st March 1922 The only noteworthy incident in Swavesey in connection with the change from Greenwich time to summer time occurred at one of the places of worship, where the congregation on Sunday morning was kept waiting for a short space while a messenger went to remind the minister that the clocks had been advanced an hour since the previous night.

**Chris Richardson**



**BECOME A  
TUTOR!**

**Tutors needed: All subjects and ages  
Tutor Doctor Cambridge  
01223 430432  
www.tutordocor.co.uk/cambridge**

**CHIROPODIST/  
PODIATRIST**

I can offer a professional service  
in your own home.

For further details please ring  
**01954 201256**

Biomechanical assessments &  
orthotic therapy also available.

*Michelle Dolan*  
HCPC Registered Chiropodist/Podiatrist  
CH34864

*e-mail: michelledolan@outlook.com*

**EVENTS AT THE WHITE HORSE**

**Quiz night 31st January**  
Exercise those little grey cells!

**Valentine event 14th February**  
Exciting plans watch out for more information

**St. Patrick's day 17th March**  
Guinness anybody?

**Mothering Sunday 27th March**  
Treat mum to our special roast dinner.

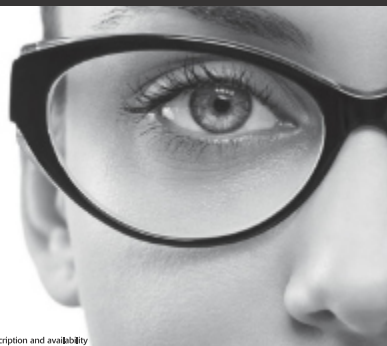
For bookings and more information on all these contact  
The White Horse 01954 231665

**Paying too much for your glasses?**

**Save Money - Buy Direct!**

Visit our factory shop to see our fabulous  
range of Discount Prescription Eyewear

- Hundreds of frames to choose from, including designer frames from Ray-Ban, Polo Ralph Lauren, Oakley, PRADA, Ted Baker and Versace
- Specialists in high and complex prescriptions
- Same-day or next-day service available\*
- Save up to 75%
- Huge range of designer sunglasses
- Full range of sports eyewear



Official stockists

\*subject to prescription and availability



**We are open 9am to 5pm Monday to Friday, and 9am to 1pm Saturday**



Call us **01954 231545** Visit our website **www.all-eyes.co.uk**  
20 Norman Way Industrial Park, Over, Cambridge CB24 5QE

**The Collatz Conjecture (a Straightforward Arithmetic Puzzle)**

Take any whole number (n) greater than zero. If even, divide by two. If odd, multiply by three and add one. Then repeat these operations on the resulting numbers. The as-yet unproven Collatz Conjecture of 1937 proposes that for all numbers this process converges at which number?

For an easy test, start with n = 12.

If you have fifteen minutes to spare, start with n = 19. If your sequence does not pass through the number 52 you have gone wrong somewhere.

If you fancy a significant challenge which takes a little over 100 steps, start with n = 27. Write down the numbers generated as you go else you may lose the plot. When you get to the end make a note of how many of the steps generate odd numbers and also what is the largest number reached in this sequence.

You will find the answers to this puzzle on page 22

**Now try this one**

$$8 \div 2(2+2) = \text{????}$$

If you think you have won! try putting the equation into the calculator in your mobile phone and see what you get.

The answer depends on the mathematical protocol used.

## A Glance at the Past in February and March From the Cambridge Chronicle

1791, 12 Mar. Assignment of Property. J.D. merchant & farmer conveyed real and personal estate to principal creditor, Edmond Rolfe Elsdon of Lynn Regis. The Deed of Trust is at Thos. Bullen, Attorney, Cambridge.

1815, 31 Mar. Sale of Live & Dead Stock & Implements. Comprising 3 cart mares, a brown hackney, 3 cows in calf 1 ditto with calf by side, 9 store hogs, poultry, 3 dung carts, a market cart, 2 taxed carts, 6 ploughs, harrows, harness sacks, beer casks, brewing & washing coppers, dairy utensils & some furniture.

1849, 17 Feb. More Fires. We are sorry to have to record two more fires which occurred this week, which broke out in a most singular manner both on the premises of Mr Hinson, grocer & draper. The first took place on Sunday morning at 11.45 a.m. during divine service and the other one the next day at twenty past one. There are various reports respecting the origin.

1852, 6 Mar, Inquest on JG. Held by Mr Marshal. The deceased was 28 years old and lived with his father. He had been in a low state of mind resulting from his being about to settle in life and a fear of being unable to get a comfortable living. At 10.30 in the morning when his father went to search for him to accompany the family to chapel, he at last found him in the wheatbarn suspended from a beam by a ploughcord. Verdict accordingly.

1855, 31 Mar. Parish Meeting. Held on Thursday 22<sup>nd</sup> to select guardians for the coming year, the old ones were chosen again.

1855, 31 Mar. Mr James Hopher. James Hopher, tailor, appointed agent for this paper.

1857, 21 Feb. National School. The Hon Mrs Dudley Ryder of Ickleford, Hitchin, Lady of the Manor of Swavesey and owner of the Rectory and other farms and property visited the schools with the Government Inspector. She again visited the parish and at a meeting at the school advised parishioners that she had engaged Mr Tomkins of Cambridge to new board the floors and make other alterations, costing £150. She has engaged a new master & mistress. The parishioners offered to assist with the cost.

1862, 8 Feb. Convict's Lecture. On Thursday 29<sup>th</sup> and Friday 30<sup>th</sup> ult. at the National Schoolroom, Charles King talked of his experience in the Penal Settlement, and as an escaped prisoner in the bush.

1867, 9 Feb. Magic Lantern. In the National School on Friday Feb 1<sup>st</sup>, in the evening the Rev W. H. Whiting of Cambridge gave a showing. Scholars of the Day, Night, Sunday & infants' schools greatly enjoyed John Gilpin's ride to Edmonton & its comic scenes.

1876, 4 Mar. Railway Accident. Inquest at the Cricketers public house on George Day, age 12, who was engaged with a man in painting the signal posts in Longstanton. When he was about to return home, instead of walking he begged a lift on a railway trolley. Whilst running to get on he tripped and fell on the line and the trolley passed over his body and killed him.

1888, 16 Mar. Smoking concert. Primrose Club meeting at The White Horse yesterday.

1890, 21 Mar. Fire. On Friday last, about midnight, fire broke out accidentally at The White Horse and resulted in the total destruction of two barns and their contents, an empty stable, six cottages and a quantity of furniture. A Police Sergeant and two constables were soon present, and with the assistance of neighbours succeed in extinguishing the flames. There was a plentiful supply of water from the wells and pumps, and the parish engine was present.

1895, 1 Mar. Seasonal Benevolence. Due to the kindness of Dr Adams of Cambridge 100 stone of bread will be given to the poor of Swavesey. Thanks are due to Dr Ellis for obtaining this gift.

1896, 14 Feb. Ancient Shepherds. Annual dinner at the Wheatsheaf. Forty members sat down to a substantial dinner. Afterwards, songs by brothers Key, Maltby, Wilderspin, Stocker, Trundley and Linford.



SUMMIT

**LANDSCAPES**

PAVING - DRIVEWAYS - BRICKWORK  
CARPENTRY - GROUNDWORKS

[www.landscapingpaving.co.uk](http://www.landscapingpaving.co.uk)  
PHONE: 01223-929394

## Surrounded by Water – Almost Part 8. Turnbridge Brook.



Taken from the footpath in front of the former School House, opposite the recreation green, the photograph looks north towards High Street, Swavesey in March 1947. The boat is ferrying passengers across the floodwater in Turnbridge Brook which flows from left to right. Both the large house and the black farm barn on the right are long gone, with Greenside Close now meeting High Street close to the site of the house.

Quiet and inconspicuous for almost all of its length, Turnbridge Brook is one of the four major waterways leading to the Great Ouse in Swavesey, the others being Covell's Drain, Swavesey Drain and Utton's Drove Drain.

On travelling westwards for about 380 metres along Rose and Crown Road, the eastern boundary wall of Envea House (formerly Aqua) is reached on the left. Here, at your feet, a narrow but deep ditch flows in from the south west. At about 620 metres further to the south west, looking along the ditch towards the A14 a lonely, defiant, weather-beaten hawthorn bush, leaning gracefully to the north east, stands where the ditch has become shallow to no more than plough furrow depth. This is the source of Turnbridge Brook at about 11m AOD.

The watercourse flows under Rose and Crown Road at the western edge of Rosegate Farm orchard and continues, largely unnoticed, at a field-plus-

garden's distance west of, and parallel to, Boxworth End road. Most of the surface water from the 30 dwelling Matthew Homes development behind 18 Boxworth End and the 70 dwelling Bushmead Homes development behind 130 Middle Watch will drain westwards into Turnbridge Brook along with agricultural land drainage water from fields either side of the brook. It continues round the eastern boundary of the Village College then it enters a pipe (culvert) under the road at the western edge of 3 Gibraltar Lane. This viewpoint and that from the pavement at Turnbridge in High Street are where Turnbridge Brook can be most easily viewed within the village. After about 40 metres in the pipe the brook reverts to an open ditch behind 8 Gibraltar Lane but for only about 10 metres before entering a pipe again. After another 100 metres it emerges as an open ditch along the eastern boundary of 24 Carter's Way then about 120 metres further on it re-enters a pipe at the north-western corner of 22 Middle Watch where it abuts Swavesey Garage. The pipe, which has gradually increased to about 1 metre in diameter, goes under School Lane between numbers 1 and 3 where it collects water in a second pipe flowing in eastwards from Priory Avenue and Carter's Way, then it runs under the eastern boundary of number 2 and beyond until it emerges as an open ditch at Turnbridge, just north of 62 High Street. The pipe bringing in Chantry Close and (possibly) Black Horse Lane water and the pipe bringing in water from Moat Way, Whitegate Close, Home Close and the Bloor Homes development in Fen Dayton Road can be seen joining the Turnbridge Brook at this point.

During periods of prolonged heavy rainfall producing vast quantities of surface water which has to reach the river, Turnbridge Brook is at its most vulnerable to serious flooding in this High Street area which is its lowest point in the built environment at around 6m AOD. In the 1947 floods the most spectacular photos of flooded roads and houses were taken in this area. The watercourse crosses under High Street to flow between Wallman's Lane and Greenside Close then turns north across Church Green alongside the community orchard, by which point it was traditionally known as Church Brook, and onwards to Swavesey Drain and the river.

In truth, most Swavesey residents will never notice Turnbridge Brook unless rainfall exceeds the torrential downpour of 8 August 2014 when, at nearby Bar Hill, three times the monthly long term average rainfall fell in six hours, equating to a rainfall event with an annual probability of 1 in 330. Stretches of several roads and streets in the village are at risk of surface water flooding from Turnbridge Brook including Whitton Close, Whitton Court, Gibraltar Lane, Middle Watch, Greenside Close and Wallman's Lane. Details can be found in maps on pages 6, 7 and 8 within the Swavesey Community Flood Plan (2021) which can be viewed as the top document on the Policies-Publications tab of the Swavesey Parish Council website at [www.swavesey.org.uk](http://www.swavesey.org.uk).

We do get some thought-provoking articles in The Meridian, don't we?

## Swavesey School Woodwork Class



I enclose a First Half 1930's Swavesey School Photo of the Woodwork Class and their great results . Guess many would go on to do Craft / Hand Work. My Father Jim Close is front row on end to right. The only other person I am fairly sure is there is Douglas Isgrove (The Baker).

Richard Close - Fen Drayton.

Can anyone identify the other pupils and the teacher? Please reply to [editor@swaveseymeridian.org.uk](mailto:editor@swaveseymeridian.org.uk)

### Answers to The Collatz Conjecture Puzzle on page 17

If  $n = 12$  the numbers on the way are: 12, 6, 3, 10, 5, 16, 8, 4, 2, 1.

If  $n = 19$  the numbers on the way are: 19, 58, 29, 88, 44, 22, 11, 34, 17, 52, 26, 13, 40, 20, 10, 5, 16, 8, 4, 2, 1.

If  $n = 27$ , there are 111 steps and 41 of the steps generate odd numbers (41, 31, 47, 71, 107, 161, 121, 91, 137, 103, 155, 233, 175, 263, 395, 593, 445, 167, 251, 377, 283, 425, 319, 479, 719, 1,079, 1,619, 2,429, 911, 1,367, 2,051, 3,077, 577, 433, 325, 61, 23, 35, 53, 5, 1) and it climbs to a high of 9,232 before starting its landing approach.

If, when attempting  $n = 27$ , you went wrong on the way or you simply lost the will to live, the full sequence is 27, 82, 41, 124, 62, 31, 94, 47, 142, 71, 214, 107, 322, 161, 484, 242, 121, 364, 182, 91, 274, 137, 412, 206, 103, 310, 155, 466, 233, 700, 350, 175, 526, 263, 790, 395, 1186, 593, 1780, 890, 445, 1336, 668, 334, 167, 502, 251, 754, 377, 1132, 566, 283, 850, 425, 1276, 638, 319, 958, 479, 1438, 719, 2158, 1079, 3238, 1619, 4858, 2429, 7288, 3644, 1822, 911, 2734, 1367, 4102, 2051, 6154, 3077, 9232, 4616, 2308, 1154, 577, 1732, 866, 433, 1300, 650, 325, 976, 488, 244, 122, 61, 184, 92, 46, 23, 70, 35, 106, 53, 160, 80, 40, 20, 10, 5, 16, 8, 4, 2, 1.



# ENTIRE

GROUP



300007




The Complete Gas Heating and Plumbing Company

## Plumbing • Heating • Gas

## Bathrooms • Water Softeners

## Property Maintenance

Tel: 01954 204044 • Web: [www.entiregroup.co.uk](http://www.entiregroup.co.uk)

Email: [service@entiregroup.co.uk](mailto:service@entiregroup.co.uk)

## LANGLEY & Co. Accountants

**Are you paying too much tax?  
Are you claiming all your business expenses?  
Do you need help with your accounting and taxation affairs?**

We provide a complete range of accounting and taxation services including:

- ◆ Accounts preparation for sole traders, partnerships and small businesses including limited companies
  - ◆ Self assessment preparation and online filing
  - ◆ Bookkeeping including payroll, CIS and VAT
- ◆ Taxation advice ◆ Business start-ups ◆ Business planning ◆ Pension reviews

For a friendly and competitively priced service from local accountants please contact Doug Langley at:

Unit C1, 2 Station Road, Swavesey, CB24 4QJ  
Tel: 01954 231249 Email: [doug@langleyaccountants.co.uk](mailto:doug@langleyaccountants.co.uk)

## Memories by Will Wright

I think it was in 1954 that we went to London for a break in the summer and again for a couple of days around Christmas time. I really looked forward to the Christmas time visits, not only because us young kids were awaiting Santa's visit and the customary presents he left us in exchange for the mince pies & sherry Mum & Dad used to leave for him, but it was absolutely amazing to be able to see the Xmas lights that were all around the central area of London's West End, especially along both Oxford & Regent streets. A visit to Santa's grotto in Selfridges store also had to be on the agenda.

Unbeknown to me at the time, but the summer holiday trip would totally open my mind to something that would effectively become an inspiration which indicated to me a future way of life & earning a living - and that was me at about 6 years old, encaptured by the entertainment industry!

It was always nice to see Nana & Grandad and they used to show us round different places of interest, such as both the Science and the Natural History museums, historical sites in the City such as the Monument, which we climbed & St.Pauls Cathedral with the totally unforgettable "whispering gallery" at the bottom of the dome, Madame Tussaud's museum & gallery and of course, not forgetting the obligatory "2 & a 1/2 to Putney please mate" trips.

Unbeknown to myself at the time, Grandad had retired but he was still a part time steward at none other than the Royal Albert Hall which is located in Kensington & looking over the south western corner of Hyde Park and the Prince Albert Memorial, after whom the hall was named. Grandad had arranged for us all to go to a show one evening during the holiday break - "tickets at the door"!

So we turn up at the Albert Hall in the early evening and are shown to our seats which were in the centre of the auditorium in the 3rd or 4th row, far enough back for a little kiddie to see above the front of what is a tall stage, no need for any crash barriers here. Well I was totally overwhelmed by the hall's internal structuring and architecture with the central dome and balcony rows along with private boxes akimbo for the "well to do" and/or "connected" punters. The headline artiste for the show was Winifred Atwell, the Caribbean pianist, singer songwriter who had sold hundreds of thousands of records in those post war days. I was totally captivated by this experience, especially when the Caribbean man sitting alongside started to talk to me - I never will know whether he was Winifred's husband or part of the management team but he gave me a biro pen inscribed "With compliments of Winifred Atwell". Wonder what happened to it, never knew but it could well turn up in a box one day!

I have to say that coming back to our lovely village did make it a little difficult for me to adapt to normal life and going back to school and I couldn't wait for the next trip to London, which, sure enough, occurred at the start of the Xmas holiday - bingo - lights everywhere and of course Selfridges grotto - woop woop!

What I was not expecting was another evening at the Royal Albert Hall seated almost identically as before and this time the star artist was none other than Eddie Calvert, known as "the man with the Golden Trumpet", who had recently had a massive number 1 hit with "Oh Mein Papa". Though we didn't have a TV in the house at the time, I had started to listen to music on the radio shows & his name &

music was constantly popping up as this was just prior to the advent of rock & roll & skiffle bands plus my Dad was building a collection of discs - back in the days of 78 & 33 rpm play speeds.

I just could not get these two shows out of my mind and just knew, albeit subconsciously, that I needed to be in the entertainment industry when my school days were finished, after all my first 2 ever gigs were at the Royal Albert Hall and ironically, little did I know at the time but I would be at this venue on numerous occasions in my future life.

---

## Manderson Trust update 2021

In turbulent times The Trust has continued to provide a haven of calm. A place to sit, think, take in a bit of nature and unwind.

The free under 12s fishing has brought families to the lakes to make the most of the equipment we loan and the advice we offer. We have carp up to 20lb in lake 5 and a host from 6lb upwards. Get in touch if you fancy a session with your youngsters.

The restocking of Lake 1 with carp up to 2lb has proved very successful. It now hosts open matches on the first Sunday of each month with winning catches being in the 10lb to 20lb range. More stock, Carp and Ide arrived before Christmas to add to the fun to be had on the lake. See our Facebook page for photos and updates.

The Mick George sports fund very kindly gave us a grant of over £1000 to reinstate and repair nearly 200m of track. We are very grateful to Dave at Over garage for the digger and to Harry for his skills as the driver.

Work continues on the wild flower meadow. Seeded with insects in mind last year, the Trust has added colourful native annual seeds to the site this autumn. Trevor from the Over and Swavesey conservation society continues to advise us and monitor the progress of the area. This year's star find was a group of Bee Orchids among the grass.

Lake 4 is part of ongoing development. 100 Tench and 100 Crucians will go in at the end of January, when water temperatures drop below 7 degrees. Areas in front of swims are clear of weed while others will provide the cover that the two species need to thrive.

Lake 3 was dredged at the start of December. Many thanks to James and the Pidley fisheries for the loan of their long arm digger. Once things have settled, we will have a breeding lake and a great place for juniors to hone their angling skills.

We were chuffed when November saw us in The Angling Times as one of the national venues that cater for disabled anglers.

Our open annual Fur and Feather match was held on the 18<sup>th</sup> December on lake 1. Well done Mark Easey who had a winning weight of nearly 20lb.

If you are struggling to find a present for a family angler in the coming year annual membership is £60 but only £30 for OAPs and £15 for Juniors 13-18. We also offer night fishing for a £25 supplement to annual membership. As always, registered disabled members fish for free.

## Doctors Surgeries

### Swavesey Surgery

(01954) 230202  
Out of hours 111

Website:- [www.swavesey surgery.nhs.uk](http://www.swavesey surgery.nhs.uk)  
Information & updates on facebook page

### Over Surgery

(01954) 231550  
Out of hours 111

Website:- [www.oversurgery.nhs.uk](http://www.oversurgery.nhs.uk)  
Information & updates on facebook page

### Longstanton

(01954) 207600  
Out of hours 111

Website:-  
[www.willinghammedicalpractice.nhs.uk](http://www.willinghammedicalpractice.nhs.uk)

See our website at [www.swaveseymeridian.org.uk](http://www.swaveseymeridian.org.uk)  
for the full and latest surgery newsletters. Ed

### Bar Hill Surgery

(01954) 780442  
Out of hours (01954) 780442 -  
*call will automatically be diverted*  
Website:- [www.mhmaple.co.uk/](http://www.mhmaple.co.uk/)

### Fenstanton

7E High Street, Fenstanton  
01480 461873

Out of hours 111  
Website:-  
[www.riverportmedicalpractice.co.uk](http://www.riverportmedicalpractice.co.uk)

## SCHOOLS INFORMATION

### Swavesey Primary School Early Years and Playwork Centre

#### Wraparound Care and Early Years Provision – Mon to Fri – term-time

Registration Fee £15 per family for using Breakfast and/or After School Club

**Breakfast Club 7.30 am – 8.55 am**

3+ year olds to Year 6 children: £6 per child per session

**After School Club 3.15 pm to 6.00 pm**

For Reception to Year 6 children: £10 per child, family rate £9 per child

**Early Years 9.00 am to 3.00 pm (full day) or morning (9-12/1) or afternoon (12-3)**

For 2 ½ year olds to 4 year olds

Places for funded children up to 30 hours per week

Charged sessions:-

3+ year olds £13 half-day and £26 full-day

2 year olds £15 half-day and £30 full-day

£4.50 for lunch hour (12-1)

For more information and to register:-

<https://www.swavesey.cambs.sch.uk/page/?title=EY+%26amp%3B+P&pid=59>



**BEAUTY, RELAXATION AND A WARM WELCOME...**

Specialists in Shellac nails, Manicures & Pedicures, Spray Tanning,  
Hair removal, Facials and Massage.

Stockists of Elemis Skincare, Sp@home and much more...

Gift Vouchers now available online at  
[www.englishrosebeautyhouse.co.uk](http://www.englishrosebeautyhouse.co.uk)

16 Berrycroft, Willingham, Cambridge CB24 5JX. Tel: 01954 261176





9am – 10am	Sing Up	choir	4yrs – 12yrs
10am – 11am	Rockin' Rhythms I	interactive theory lessons	4yrs – 7yrs
	Rockin' Rhythms II		8+yrs
	Rockin' Rhythms III		Grade 3+
<b>NEW CLASS!</b>	Rock School Rockets	guitars, drums	beginners
11am – 12pm	SMS Community Orchestra	instrumental ensemble	all levels; all ages
	Rock School	guitars, drums, vocals	9+yrs

***Now in its 9<sup>th</sup>. Year!***

Check out our new class: RS Rockets

Also, SMS Community Orchestra, open to all ages; adults, parents: why not pick up that instrument from youth and join us on a Saturday morning?

Email for more information and to check availability.

**£4 per session!**

Swavesey Music School  
Swavesey Village College  
Gibraltar Lane  
Swavesey  
CB24 4RS

<http://swaveseyms.co.uk/>

**HOCKEYS**  
ESTABLISHED 1885

**Thinking of a move?** We are happy to offer you a free, no obligation valuation of your property.



Call our Cambridge office for a free valuation  
**(01223) 356054**



Call our Willingham office for a free valuation  
**(01954) 260940**

**BALLET**

Russian Style Ballet Classes in  
Over Primary School Hall

Thursdays for age 4-16

Full trained experienced teacher -  
Assoc ARBTA BDQT

Enhanced DBS; Prevent; Chaperone Licence

Local: Friendly: Fun: Small Classes  
100% pass rate in recent examinations.

Website [www.abmschoolofdance.co.uk](http://www.abmschoolofdance.co.uk)

Email. [tutusrus@ntlworld.com](mailto:tutusrus@ntlworld.com)

(Also in Cottenham, Histon & Girton)



**REED KITCHENS & BATHROOMS**

DESIGN TO INSTALLATION  
THE COMPLETE SERVICE

We are a local established company since 1994 that manufactures a range of top quality kitchens and offers them direct to you, at an upfront price that includes everything from design to full installation. It also includes your choice of top range appliances from the likes of NEFF and Bosch.

Makeover your kitchen using our door and worktop replacement service.

Call for a free Brochure



**KITCHENS**



**BATHROOMS**



**BEDROOMS**

Tel: 01954 232899 Mobile: 07711 696015

For more details visit: [www.kitchenscambridge.com](http://www.kitchenscambridge.com)  
email: [glenn@kitchenscambridge.com](mailto:glenn@kitchenscambridge.com)



# Rainbows, Brownies, Guides and Rangers.

## Girlguiding Anglia's Amazzing 50th Birthday

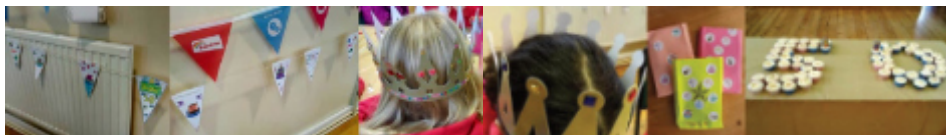
In 1971 Girlguiding in England was divided into six regions and so in 2021, they all celebrated their 50th Birthdays. Girlguiding Anglia chose a bee theme and we were invited to 'Buzz about Anglia'. There was a special challenge badge we all worked towards with six themes spelling ANGLIA:

- Bee **A**dventurous - Have a new adventure or try a new activity
- Bee **N**ew and Creative - Use your imagination to create or learn a new skill.
- Bee **G**iving - Give your time or generosity to others or your community.
- Bee a **L**eading Light - Lead the way on those things that are important to you or those around you.
- Bee an **I**nternational explorer - Discover more about guiding around the world and WAGGGS.
- Bee **A**mazing - Be amazing, celebrate being you and being part of Girlguiding Anglia and all the amazing fun and friendship Girlguiding has to offer.



Each of the Swavesey units completed this is their own way with their own set of activities.

We were also invited to join a region-wide party and celebrate on 27th November or whenever we could. The next day, Sunday 28th November, suited the volunteer leaders and venue availability and so 49 Leaders, Rangers, Guides, Brownies and Rainbows met at Bethel Baptist church for an indoor street party. The street party style allowed us to reduce the covid risk by the girls remaining seated and given a variety of activities to do at the tables; Anglia themed bunting needed colouring in, gold party hats needed some gems and jewels adding, party bags were made and decorated with stickers bearing the Anglia 50th motives. Then time for some finger sandwiches and fruit. No party is complete without cake, and gold iced cupcakes had been placed in a 50 shape. Our District Commissioner, Debbie, had been invited as a special guest to blow out the candles and we sang Happy Birthday to Girlguiding Anglia. We opened our birthday card, swapped with another unit in the Anglia region. Sadly, we didn't have time for the planned game of bingo, but whilst the girls had been eating, their party bags had been filled with a badge, balloon and sweets.



Rainbows and Brownies are full with waiting lists, sign your daughters up early for Rainbows, don't wait until she is 5 and her friends have started!


[www.girlguiding.org.uk/joinus](http://www.girlguiding.org.uk/joinus)

**Adult helpers are needed, please get in touch if you think you can help or would like to know more. Another Brownie Unit is needed, and it is possible it could be run alongside the existing one with both doing the same activities and leaders joining together for planning.**

**There would be help and support for anyone wanting to get involved.**

[www.girlguiding.org.uk/get-involved/become-a-volunteer/ways-of-volunteering/](http://www.girlguiding.org.uk/get-involved/become-a-volunteer/ways-of-volunteering/)

[www.girlguiding.org.uk/get-involved/](http://www.girlguiding.org.uk/get-involved/)



**Swavesey Village College**  
Adult Education Courses Spring 2022

Course	Start Date	End Date	Time	Weeks	Cost	Place	Day
<b>Art &amp; Crafts</b>							
Art Class with Sarah Warnes	18/01/2022	15/03/2022	10.00-12.30	7	£105	PVH	Tuesday
Mosaics for Improvers	23/02/2022	30/03/2022	19:00-21:00	6	£98	NSC	Wednesday
Intermediate Knitting - Knit a Hat & Read a Pattern	24/02/2022	10/03/2022	19:30-21:00	3	£35	NSC	Thursday
Intermediate Knitting - Cable Knitting	17/03/2022	24/03/2022	19:30-21:00	2	£25	NSC	Thursday
Beginners Knitting	21/04/2022	12/05/2022	19:30-21:00	4	£45	NSC	Thursday
Crochet Amigurimi - How to make cute soft toys	19/04/2022	03/05/2022	19:30-21:00	3	£35	NSC	Tuesday
<b>Health &amp; Wellbeing Classes</b>							
Nordic Walking Beginners	26/04/2022	17/05/2022	09:30-10:30	4	£32	SVC	Tuesday
Nordic Walker Improvers	26/04/2022	24/05/2022	10:30-11:30	5	£48	SVC	Tuesday
Nordic Walking Beginners	14/06/2022	05/07/2022	09:30-10:30	4	£32	SVC	Tuesday
Nordic Walker Improvers	14/06/2022	19/07/2022	10:30-11:30	6	£48	SVC	Tuesday
Foraging Evening Course	01/03/2022	29/03/2022	19:00-21:00	5	£60	SVC	Tuesday
<b>General</b>							
Curry House Favourites	23/02/2022	30/03/2022	19:00-21:00	6	£40	SVC	Wednesdays

SVC Swavesey Village College  
 NSC Northstowe Secondary College  
 PVH Papworth Village Hall

**For information and details about all our courses**  
 Please call 01954 234488  
 Email: [community@swaveseyvc.co.uk](mailto:community@swaveseyvc.co.uk)  
[www.swaveseyvc.co.uk/community-education](http://www.swaveseyvc.co.uk/community-education)



The renovation of the Scout Hut is now complete, and I would really like to thank Paul Hendry from George Hendry & Son Building Contractors for all the fantastic work.

Both Paul and Steve and many others have helped transform the Scout Hut into an amazing new modern building for the members of 1<sup>st</sup> Swavesey Scout Group and people of the community to enjoy for many years to come.

The Scout Hut was in real need of being updated, and with the help of Paul and Steve and the support from various building developers in the village we have been able to make such a difference for the young people and adults who regularly attend the group.

I hope that lots of you would have seen the photos that we posted on the village Facebook page in January and February. Also, hopefully you would have been able to see the hut in person at the open day that we held at the end of January too.

#### **Beavers:**

We are hoping that we will be able to confirm in the next issue of the Meridian magazine that we were able to start up running beavers again after Easter as we have had a couple of adults come forward and volunteer to run the section.

#### **Cubs & Scouts:**

Both the Cub Pack and the Scout Troop are both running well and have good numbers, now that the weather will hopefully getting better and the days are staying lighter for longer, we are hoping that we will be getting outside for more activities and adventures.

#### **Volunteers:**

We are always after extra help and support, if you would like to help but are unsure how, please do get in touch. Not only will you be able to give the young people of the village and surrounding areas new experiences and memories, but you will also get your own experiences and memories that will stay with you.

If you have any questions regarding joining as Beaver, Cub, Scout or as an adult volunteering or anything else relating to the Scout Group, please do get in touch with us by emailing us at [info@1stswaveseyscoutgroup.org.uk](mailto:info@1stswaveseyscoutgroup.org.uk) and we will happily get back to you as soon as possible.

## **Notes From Your DC - Sue Ellington**

I am sorry I am a little late in wishing you all a Happy New Year but I sincerely hope we are heading into a better year where we finally learn to live with the virus and return to normal living. By the time you read this we will all know whether the forecast infection explosion has happened. All I can say is keep safe and look out for your neighbours

South Cambs District Council has revised the community grants scheme and increased the basic grant applications to £2000. These are available to any village group to improve their community activities. Examples of grants which have been approved over the last year includes - moveable goal posts for village football groups, a lawn mower for a bowls club, outdoor table tennis table, and equipment for a drama group. Applications can be for the full amount needed or partial payment with a plan to raise the remainder required. The panel need to know that the proposal is supported by the Parish Council - preferably with a contribution. But please apply - it is very simple.

There is concern in Boxworth End about the speed of the traffic coming into the village and the Parish Council have been asked to support traffic calming at the end of the cycle way. This has been investigated previously but the Highways Authority said it was not possible because it is too close to the bend. But if the calming could be a little further into the village it could work and the Parish Council would be interested to hear resident's comments on such a proposal.

I have been made aware of rising concern about cyclists riding with poor lighting and the rider having dark clothing. Please wear fluorescent clothing and make sure your lights work. This problem can be increased by cars which park on the wrong side of the road at night.

The Welcome booklet for families moving into the new homes has been so successful that the Parish Council has agreed to fund a reprint so that all new residents can have one ( established residents also find them useful) . There will be a further edition funded by South Cambs after April so if there are changes in contact details for your organisation please let me or Linda Miller - clerk to the parish council know.

If I can sort out any problems with the District council please feel free to give me a ring on 07774146331 or 01954202923. Or email me at [Cllr.ellington@scambs.gov.uk](mailto:Cllr.ellington@scambs.gov.uk).

Sue Ellington  
District Councillor for Swavesey, Fen Drayton and Lolworth.

## Land South of the A14 Cambridge Services,

### Boxworth Road, Boxworth

At the December Parish Council meeting, representatives from JAYNIC attended to give a presentation on proposals for land which has been identified south of the A14 Cambridge Services, within the Gtr Cambridge Local Plan First Draft Submissions (GCLP). This land is being promoted for general industry and storage and distribution development.

At the time of writing this is only a proposal within the First Draft Submission, which was open for consultation until 13<sup>th</sup> December 2021.

JAYNIC has entered into an agreement with the landowner of the main part of the site to promote the development of the land for employment services. A plan showing the land identified within the GCLP is shown below.

- Allocated area of 18.62 hectares
- Majority of land is the former contractors' compound for the A14 works
- Land to the south of the former contractor site is owned by Cambridge University



This photograph shows:

- Outlined in red local landowner land which JAYNIC has an agreement on
- Additional land south (outlined yellow) land owned by Camb University, in discussion with JAYNIC
- Additional land east (hatched area) not part of allocation but could be in the future.

The Parish Council expressed concerns over this proposal including:

- Surface and foul water from the site would be directed through Swavesey (foul water via the Uttons Drove sewage treatment works), which would add to the flood risk concerns for the parish
- Would create more traffic, in particular HGV traffic, around the Swavesey junction of the A14.
- Likely to cause huge issues with traffic on the existing Services sliproad and roundabout which are often queuing
- A no right turn out of the proposed site would be required to stop traffic going through Boxworth towards the A428 or to avoid the A14
- Would restrict any growth at the Services, the lorry park already cannot cope with existing requirements
- There is further industrial development already being proposed and developed at Bar Hill, Northstowe and Slate Hall Farm (between Oakington and Longstanton Roads) is further development needed here?

The Parish Council will stay involved in this discussion and comment further as the proposals develop. JAYNIC are interested in hearing local residents' views, contact Paul Sutton at JAYNIC: [paul@jaynic.co.uk](mailto:paul@jaynic.co.uk)

## Annual Parish Meeting Wednesday 13th April 2022 – 7.30pm Swavesey Memorial Hall

Your opportunity to hear reports from and ask questions of the Parish Council, its committees, village charities, other village organisations and your County and District Councillors, on items over the past year and for the forthcoming year.

Having not been able to hold this public meeting for the past couple of years we very much hope that it will be able to take place in the Memorial Hall in April this year.

Further information will be published on posters around the village nearer the date

Please do come along to the meeting to learn more about your village.

We look forward to seeing you on 13<sup>th</sup> April.

**Swavesey Parish Council**

communitycatalysts®  
unlocking potential effecting change



### Could caring be your new business?

Community Catalysts are looking to help people who want to make a business out of caring. This might be offering care and support for older people or people with disabilities at home or running activities in the community. This is about local people helping other local people. How you do it is entirely your choice - as a sole trader or maybe with friends to set up a co-operative or social enterprise.

This is a great opportunity for people with an interest in caring. Maybe you have a background in care or already supporting people informally or on a voluntary basis. Your local 'Catalyst', Anna Tuck is already working with other groups in East Cambridgeshire and can now offer this help in Swavesey. This project has the full support of Swavesey Parish Council.

The project has been funded by the county council to offer free support, helping folks to help their neighbours and understand how to run your own business whilst providing the best care and support. Anna is also able to advise small groups and organisations already established with developing or diversifying their business.

Community Catalysts have done this for over 10 years, with many successful projects up and down the country. We have seen that with Covid that continuity of support is even more important, difficult times have shown even more that people want to help others in their community. If you or someone you know in Swavesey has an idea to provide care or support and need help to realise it, please get in touch with Anna Tuck on:

[anna.tuck@communitycatalysts](mailto:anna.tuck@communitycatalysts) or phone 07881 297 330

[www.communitycatalysts.co.uk](http://www.communitycatalysts.co.uk)

[www.facebook.com/CommCatsEastCambs](https://www.facebook.com/CommCatsEastCambs)

# SWAVESEY PARISH

## Parish Council News November/December 2021

**The recent Parish Council Election resulted in the election of Jonathan Kerley to the PC. Members welcomed him to the December meeting.**

### **DISCUSSION WITH LEADERS OF SOUTH CAMBRIDGESHIRE DISTRICT COUNCIL, and DISTRICT COUNCIL MATTERS**

The November meeting of the PC opened with a discussion with SCDC Leader, Councillor Bridget Smith, and the Cabinet Member for Planning Policy and Delivery, Councillor Dr. Tumi Hawkins.

A number of concerns were raised by Parish Councillors:

The affect of the pandemic on access to SCDC staff at the Cambourne Offices. Cllr. Smith reported that whilst the Offices are closed, they are being upgraded to make them more sustainable and economical to run.

There were a number of concerns raised in relation to the Planning Departments working with the PC and applications in the village.

A major issue, which has been raised on numerous occasions, relating to planning applications affecting Swavesey both within the village and in surrounding areas was the amount of surface water coming through the village and the increasing pressure on the foul water being processed through the Uttons Drove Sewage Treatment Works.

The PC also asked for access to air pollution monitoring equipment, in particular to monitor air quality around the schools and the High Street.

(A fuller report is available in the PC minutes for the November meeting on the PC website).

At the December Meeting the PC received a short briefing from The JAYNIC organisation on proposals for the development of 18.5 hectares of land adjacent to the A14 Cambridge Services for B1, B2, and B8 commercial employment uses which is part of early consultation on the SCDC local planning process (again the details presented to the PC are on the web site).

The PC agreed to fund £130.00 towards a reprint of 'The Swavesey Welcome Pack'. This is to supplement those already distributed to the new residents moving in to the village.

### **COUNTY COUNCIL**

Highways maintenance by the Highways Dept. is continuing.

There has been a programme of jetting to clear the surface water drains in the village. The PC is concerned that a number are so blocked that they were not cleared and is awaiting a report from the County Council as to the success of the operation.

# COUNCIL NEWS

Following further representations by residents the PC is continuing discussions with the County Council with regard to the ongoing concerns about speeding in Boxworth End and the safety of the Ramper Road junction and the impact of the new developments.

The PC considered an application for a disabled persons parking bay at 25 Thistle Green. The response from the PC is to question why a disabled bay is necessary when the property has parking available on its own site unless there are special requirements for wheelchair access to the vehicle.

Some S106 funding has been identified to improve the Guided Busway parking area.

### **DRAINAGE**

The PC continues to press for improved drainage and raise issues of concern as raised in the meeting with the District Councillors (see above).

Mr Fulton of the Fewes Lane Consortium expressed concern at the November meeting that consideration of the planning applications for Northstowe 3a and 3b were proceeding with outstanding water and drainage issues not having been resolved. The PC shared his concerns and informed him that Keith Wilderspin would attend the Greater Cambridge Planning Meeting to once again express our concerns. The December Gtr Camb Planning meeting however was subsequently deferred.

### **PLANNING**

A number of planning applications have been considered. An application 21/04730/FUL was considered, affecting land to the rear of 10 Boxworth End and observations were passed to planners relating to compliance with the village design guide and surface water drainage. (Full details in the minutes on the web site).

### **VILLAGE MATTERS**

The drainage from the low road at Swan Pond has been improved.

Additional dog waste disposal in Brick kiln drove is being considered.

The PC welcomed a request for a memorial bench to be installed in the Constable's Rood in memory of Lewis Mannion.

Cycle stands and bollards are to be installed around the village sign in Market Street.

### **FINANCE**

The Draft Budget for the PC for 2022/3 was shared and will be finalised in January.

The PC agreed to make a grant of £1,000.00 towards the cost of new flooring in Over Day Centre from the PC COVID recovery fund.

Some new replacement Christmas lights have been purchased and erected in Market Street.

<b>Swavesey Parish Council Website:- www.swavesey.org.uk</b>		
<b>Parish Councillors</b>	<b>Telephone (01954)</b>	<b>E-mail address</b>
Warren Wright (Chairman)	203172	wwright@swavesey.org.uk
Hannah Parish (Vice-Chairman)	203035	hparish@swavesey.org.uk
Martin Johnston	200605	mjohnston@swavesey.org.uk
John Pook (Vice-Chairman)	230978	jpook@swavesey.org.uk
James Dodson	230560	jdodson@swavesey.org.uk
Stuart Faben	07887 906982	sfaben@swavesey.org.uk
Colin Parsons	230861	cparsons@swavesey.org.uk
Sandie Smith	232356	ssmith@swavesey.org.uk
Keith Wilderspin	230083	kwilderspin@swavesey.org.uk
Doug Hunt	232478	dhunt@swavesey.org.uk
Jonathan Kerley	231304	jkerley@swavesey.org.uk
<b>Clerk:</b> Linda Miller	202982	clerk@swavesey.org.uk
<b>District Councillor:</b> Sue Ellington	202923	cllr.ellington@scambs.gov.uk
<b>County Councillor:</b> Mandy Smith Papworth & Swavesey Ward	230248	mandy.smith@cambridgeshire.gov.uk
<b>Memorial Hall Administrator:</b> Nicole Mullee	07963 861791	memorialhall@swavesey.org.uk
Swavesey Parish Council meets on the 2nd Thursday of each month for Planning items and on the 4th Monday of each month for Full Council. All meetings are held in the Memorial Hall at 7.30pm. There is always a 10 minute public forum at the start of the meeting.		


**PEST PROBLEM?**  
LOCAL QUALITY SERVICE

Family firm since 1974

pest control/prevention/  
emergencies/contracts/quotations/  
birds/rodents/insects/more...

t: 01954 230708  
m: 07836 245670  
w: www.drepestcontrol.co.uk  
e: info@drepestcontrol.co.uk

**DRE** 19, WALLMANS LANE  
CAMBRIDGE CB24 4QY



**SACRED HEART OF JESUS**  
Roman-Catholic Parish  
19 Needingworth Road, St Ives, Cambs. PE27 5JT

**Parish Priest: Rev Thomas J Walton**

Tel: 01480 462 192  
www.sacredheart-stives.org.uk  
email: office@sacredheart-stives.org.uk

Mass Times:  
Saturday 17.00 (Anticipatory)  
Sunday 08.00 and 11.00

## The Parish Church of St Andrew

Thank you to everyone who came to our Advent Fayre and Craft Market which we held on November 27<sup>th</sup>, last year. It was lovely to welcome so many of you back into St Andrew's and we hope that you all enjoyed yourselves. The event raised £650.43 for church funds. As always, we'd like to say a huge thank you to all the people who contributed trees and decorations for the "A Going Green Christmas" competition. The results of your voting were:

### Young Persons Category:

- First: 1st Swavesey Cubs
- 2nd: 1st Swavesey Brownies
- 3rd: Bethel Baptist Church

### Adults Category:

- 1st Richard Hart
- Joint 2nd: Meridian Quilters and Nicky Carne

The displays were removed at the beginning of January but we hope that you had time to visit the church to see them.

### Snowdrop Walk and Open Studio: Date to be confirmed

As mentioned in the December Meridian, Jeremy and Gillian Newsum, of Priory House, have once again offered to open their gardens on behalf of the church for a Snowdrop Walk. Jeremy will also be opening his studio. The date of this event is impossible to predict so look out for information on our noticeboards, Facebook and online on the 5folds website.

Refreshments will be served in church.

## Do you like salt?

These days I expect the answer that should be No! High blood pressure, heart problems and other medical conditions tend to make us think of salt being bad. How strange that Jesus should bid us be the salt of the earth in chapter 5 of Matthew's Gospel. With the recent frosts we have recently had, we are reminded of some of the positive benefits of salt. How many more accidents would there have been without salted roads and paths? That gives a clue to what Jesus was getting at - even if salt was used for different purposes in his day. We might not always like the mess gritting the roads makes, but we would be worse off without it. The trouble is, we don't see the accident we didn't have.

Many of Jesus' sayings and instructions left to us are not that comfortable and we might be inclined to ignore them or not apply them, but how many more mishaps are caused in life by such lack of spiritual salting? I fear too many. Next time we are cleaning the mess off our cars, bicycles or footwear, let's be grateful it helped us not to fall over. Let's also take courage and apply spiritual salt in our lives and communities and there as well. Maybe one day you will be thanked that you helped someone avoid a stumble of a different kind.

Best wishes,

Simon Gill, Team Rector, Swavesey.



Once again we are entering uncertain times as we write this. We hope that come the New Year we will still be meeting every Sunday at Bethel but should that change we will first update our Facebook page.

Along with our Sunday Services we host Club Vintage on a Wednesday at 2-4pm and Compass Cafe on a Thursday at 10.45am.

If you would like more information about either please do get in touch with Admin.

The Church Building will be closed from 4th - 10th January inclusive due to essential electrical work.

## CONTACT US

In times of uncertainty we want you to know you can count on God, and by extension us as a church. Please do not hesitate to reach out.

Stacey Alsop (Admin) - [admin@bethelbaptistchurch.org.uk](mailto:admin@bethelbaptistchurch.org.uk)

Sue Hope (Secretary) - [secretary@bethelbaptistchurch.org.uk](mailto:secretary@bethelbaptistchurch.org.uk)

Wendy Whistler (Treasurer) [treasurer@bethelbaptistchurch.org.uk](mailto:treasurer@bethelbaptistchurch.org.uk)

Marianne Holt (Youthworker) - [marianne@bethelbaptistchurch.org.uk](mailto:marianne@bethelbaptistchurch.org.uk)

Wendy Snead (Pastoral Care) -  
[pastoralcare@bethelbaptistchurch.org.uk](mailto:pastoralcare@bethelbaptistchurch.org.uk)

[www.bethelbaptistchurch.org.uk](http://www.bethelbaptistchurch.org.uk)

[www.facebook.co.uk/SwaveseyBethel](http://www.facebook.co.uk/SwaveseyBethel)

[www.youtube.com/SwaveseyBethel](http://www.youtube.com/SwaveseyBethel)

Bethel Baptist Church Swavesey on Apple and Android

## Community Groups & Charities

Swavesey Neighbourhood Plan Steering Group	A voluntary group who meet on the first Monday each month to set out the vision for Swavesey and the planning policies needed to manage development according to the wishes of the local community. See <a href="http://www.swavesey.org.uk/neighbourhood-plan/">http://www.swavesey.org.uk/neighbourhood-plan/</a> or Email: <a href="mailto:clerk@swavesey.org.uk">clerk@swavesey.org.uk</a> for more information
Cam Sight	Cam Sight is a local charity which offers support to anyone with a visual impairment, along with their family and carers. We meet on the 4th Wednesday afternoon of each month in Bar Hill. For more information please telephone Joan in Bar Hill on 01954 200622 or Alison at Cam Sight on 01223 420033 or email <a href="mailto:alison@camsight.org.uk">alison@camsight.org.uk</a> . For more info see:- <a href="http://www.camsight.org.uk">www.camsight.org.uk</a>
Cambridgeshire Hearing Help	CHH is a charity that helps people with hearing loss. Volunteers service NHS hearing aids and provide batteries and they attend Swavesey quarterly at Thistle Green. Advice on any aspects of hearing loss is available at a hearing help session or by calling the office on 01223 416141, e-mail <a href="mailto:enquiries@cambridgeshirehearinghelp.org.uk">enquiries@cambridgeshirehearinghelp.org.uk</a> or check the website <a href="http://cambridgeshirehearinghelp.org.uk">cambridgeshirehearinghelp.org.uk</a>
Care Network	Care Network supports volunteers, encourages independence and develops good neighbour projects. We provide the Welcome Home from Hospital service across Cambridgeshire. Contact:- Care Network, 5 Broadway House, 149-151 St Neots Rd, Hardwick, Cambridge, CB23 7QJ (tel: 01954 211919). <a href="http://care-network.org.uk/">care-network.org.uk/</a>
Community First Responder Scheme	The local group in Over and Swavesey has provided help over many hours and attended over 20 patients in your community. You can support the group and help to fundraise for equipment or volunteer to become a Community First Responder within your community. Contact:- <a href="mailto:responderadmin@eastamb.nhs.uk">responderadmin@eastamb.nhs.uk</a> or call 01284 731802
Swavesey Library	A volunteer run community library based in Swavesey Village College. We are able to providing a full range of library facilities being directly linked to the Cambridgeshire County Council library service. For more info see:- <a href="http://www.swavesey.org.uk/village-link/swavesey-library">www.swavesey.org.uk/village-link/swavesey-library</a>
The Friends of the Rosie Hospital	The Friends of the Rosie Hospital are helping to make the Rosie a more comfortable environment for mothers and babies. Contact:- Mrs Mary Sanders (Hon Chair) <a href="mailto:rosieinstitches@ukonline.co.uk">rosieinstitches@ukonline.co.uk</a> Tel 01223 356615
East Anglia's Children's Hospice (EACH)	Put your free time to good use and volunteer at East Anglia's Children's Hospice (EACH) in Milton. Volunteering at a children's hospice doesn't always mean care work and fundraising as there are also tasks such as admin and maintenance of the grounds. Contact:- Clare Bates on 01223 815 134, email <a href="mailto:clare.bates@each.org.uk">clare.bates@each.org.uk</a>
Community Resourcing	We have a small group of local volunteers (local residents from our community) who would like to help other members of our community with any practical tasks. Contact:- Parish Council Tel: 01954 202982 or Email: <a href="mailto:clerk@swavesey.org.uk">clerk@swavesey.org.uk</a>
OWLS Community Car Scheme	Run by DBS checked volunteers the scheme offers a door-to-door service, for medical or some social journeys, to people who are unable to access other forms of transport. Ring 07505 254363 to book a journey, find out more, or to volunteer as a driver

# CLUB INFORMATION

Army Cadet Force	Swavesey Detachment, No 2 (Cromwell) Company, Cambridgeshire Army Cadet Force meets each Tuesday evening at the Swavesey Village College from 7 pm. New recruits are welcomed from ages 12 years (year 8) to 18 years. Contact - Sgt Phill Barrett phone 07786981380																								
Over District Girlguiding Swavesey and Over	<table border="1"> <thead> <tr> <th>Unit</th> <th>Evening</th> <th>Contact</th> </tr> </thead> <tbody> <tr> <td>Swavesey Rainbows</td> <td>Thurs</td> <td><a href="mailto:caroline@overroad.co.uk">caroline@overroad.co.uk</a></td> </tr> <tr> <td>Swavesey Brownies</td> <td>Mon</td> <td><a href="mailto:swaveseyeagleowl@gmail.com">swaveseyeagleowl@gmail.com</a></td> </tr> <tr> <td>Swavesey Guides</td> <td>Thurs</td> <td><a href="mailto:swaveseyguides@gmail.com">swaveseyguides@gmail.com</a></td> </tr> <tr> <td>Over Rainbows</td> <td>Mon</td> <td></td> </tr> <tr> <td>Swavesey Rangers</td> <td>Thurs</td> <td><a href="mailto:seniorsectionoverdistrict@gmail.com">seniorsectionoverdistrict@gmail.com</a></td> </tr> <tr> <td>Over Brownies</td> <td>Wed</td> <td></td> </tr> <tr> <td>Over Guides</td> <td>Tue</td> <td></td> </tr> </tbody> </table>	Unit	Evening	Contact	Swavesey Rainbows	Thurs	<a href="mailto:caroline@overroad.co.uk">caroline@overroad.co.uk</a>	Swavesey Brownies	Mon	<a href="mailto:swaveseyeagleowl@gmail.com">swaveseyeagleowl@gmail.com</a>	Swavesey Guides	Thurs	<a href="mailto:swaveseyguides@gmail.com">swaveseyguides@gmail.com</a>	Over Rainbows	Mon		Swavesey Rangers	Thurs	<a href="mailto:seniorsectionoverdistrict@gmail.com">seniorsectionoverdistrict@gmail.com</a>	Over Brownies	Wed		Over Guides	Tue	
	Unit	Evening	Contact																						
	Swavesey Rainbows	Thurs	<a href="mailto:caroline@overroad.co.uk">caroline@overroad.co.uk</a>																						
	Swavesey Brownies	Mon	<a href="mailto:swaveseyeagleowl@gmail.com">swaveseyeagleowl@gmail.com</a>																						
	Swavesey Guides	Thurs	<a href="mailto:swaveseyguides@gmail.com">swaveseyguides@gmail.com</a>																						
	Over Rainbows	Mon																							
	Swavesey Rangers	Thurs	<a href="mailto:seniorsectionoverdistrict@gmail.com">seniorsectionoverdistrict@gmail.com</a>																						
	Over Brownies	Wed																							
Over Guides	Tue																								
Swavesey Spartans	Swavesey Spartans are a Chartered Standard Youth Football Club affiliated to Cambridgeshire Football Association. The club runs boys and girls teams from under 6 through to under 17. For information and enquiries please contact Chairperson - Mr Darren Bucknall 07872 681167 Secretary - Mr Simon Dawson 07886 215205 Club Welfare Officer - Carolyn Merricks on 01954 204972																								
1 <sup>st</sup> Swavesey Scout Group	All sections meet at the Scout Hut on the SVC site <b>Cubs</b> Day: Tuesday: 18.00 to 19.15 Contact: Steven Wilson - Cub Leader Email: <a href="mailto:steven.wilson@1stswaveseyscoutgroup.org.uk">steven.wilson@1stswaveseyscoutgroup.org.uk</a> <b>Scouts</b> Day: Monday. Time: 19.00 to 20.30 Contact: Jim Burling - Group Scout Leader Email: <a href="mailto:jim.burling@1stswaveseyscoutgroup.org.uk">jim.burling@1stswaveseyscoutgroup.org.uk</a> For any other enquiries Email: <a href="mailto:info@1stswaveseyscoutgroup.org.uk">info@1stswaveseyscoutgroup.org.uk</a>																								
Swavesey Early Years and Playwork Centre	Swavesey Early Years and Playwork Centre are based in their own purpose-built unit on the primary school site. It comprises Early Years children (aged 2 – 4 years) between 9am and 3pm (formerly Swavesey Pre School) and we provide activities and care for primary school aged children before and after school. Breakfast Club runs from 7.30 am to 9am and After School Club from 3.15pm to 6pm. For information please contact Carol Panther (Early Years and Playwork Manager) by email: <a href="mailto:eyandp@swavesey.cambs.sch.uk">eyandp@swavesey.cambs.sch.uk</a> or by phone 01954 273312 or 07803 812221.																								
Swavesey Music School	Meets every Saturday of term time at Swavesey Village College. Only £3.00 per session. For further details see: <a href="http://www.swaveseymusic.co.uk/">www.swaveseymusic.co.uk/</a>																								

Health and Wellbeing Club	A club for older adults which runs on the last Tuesday of the month with the exception of December. The group meets at the Community Centre, Thistle Green, Swavesey from 10.00 to 11.30am. Refreshments, chair-based exercises, speakers and time for conversation. No booking is required and the group is Free.
British Tang Soo Do Institute	British Tang Soo Do Institute practices the Korean martial art of Tang Soo Do. Our club training covers self defence techniques and many aspects of fitness including flexibility, coordination, conditioning, balance and discipline helping to promote a healthy lifestyle. For further information please contact Master Jeff Cockram on 07863 345681 or <a href="mailto:jeff@btsdi.co.uk">jeff@btsdi.co.uk</a> or see our website: <a href="http://www.btsdi.com">www.btsdi.com</a>
Swavesey Tang Soo Do Club	Swavesey Tang Soo Do have classes on a Monday and Wednesday in the primary school main hall. Beginners and junior grades are 6pm-7pm and senior grades 7pm-8:15pm. The contact details are Mr and Mrs Morton 07919 050261 and <a href="mailto:enquiries@swaveseytsd.co.uk">enquiries@swaveseytsd.co.uk</a> . The website is <a href="http://www.swaveseytsd.co.uk">www.swaveseytsd.co.uk</a>
Allotments in Swavesey	Down Hale Road towards the windmill and on the right there are 61 plots, mostly 150 sq yds (125 m <sup>2</sup> ) in area, backed up by eight water tanks. Large yields of a wide range of high quality vegetable, fruit and flower crops can be grown successfully. If you are interested in joining the waiting list contact Val Sage Tel 01954 230853
British Legion	For information contact:- Secretary - Angela Dye. 01954 277453. email: <a href="mailto:dyeangela0@gmail.com">dyeangela0@gmail.com</a>
Swavesey Badminton Club	Located at the Swavesey Village College Sports Centre. The Club offers a high standard of play at club nights on Tuesdays 7pm to 8pm and on Fridays from 6.30pm to 9.30pm. We play competitive badminton in the Cambridge leagues and run men's, women's and mixed teams. Contact Helen Taylor on 01954 230997 Email: <a href="mailto:enquiries@swaveseybadminton.net">enquiries@swaveseybadminton.net</a> website: <a href="http://www.swaveseybadminton.net">www.swaveseybadminton.net</a>
Swavesey Billiards and Snooker Club	For information/membership please contact Graeme Waites (01954 230113) Email <a href="mailto:graham.waites566@btinternet.com">graham.waites566@btinternet.com</a>
Swavesey Camera Club	At Swavesey Camera Club we are proud to cater for photographers of all standards. For more information visit our website at <a href="http://www.swaveseycameraclub.co.uk">www.swaveseycameraclub.co.uk</a> . We meet every Thursday, 7.30 - 9.30pm, Lecture Room, SVC. Non-members welcome - £4 charge (first visit free). For further details please ring Simon Shore 01954 230848
Swavesey Squash Club	Swavesey Squash Club has three international standard squash courts, in our recently refurbished clubhouse, on the Swavesey Village College site. The club has a number of weekly sessions running, suitable for beginners, improvers, and more advanced players. Unlimited use of the facility from £17 a month. A welcoming and active community club with social events and opportunities for competition. Visit our website for more details or contact Ali Loke on 07776 176866/ <a href="mailto:ali@alilokesquash.com">ali@alilokesquash.com</a> . <a href="http://www.swaveseysquash.com">www.swaveseysquash.com</a>

Over Netball Club	We train on a Tuesday night 7pm till 8.30pm on the outdoor courts at Swavesey Village College. Small friendly club, play in CDNL local league, beginners/ everyone welcome. Cost £3 per session. Contact is Lindsay Foster - <a href="mailto:lindsayfoster001@gmail.com">lindsayfoster001@gmail.com</a> 01954 202070 or 07543 460725
Compass Cafe	Meets every Thursday morning from 10.30 until 12.00 at Bethel Baptist Church. Contact Sue Ellington on 01954 202923 or <a href="mailto:sue.ellington@virgin.net">sue.ellington@virgin.net</a>
Swavesey Community Choir	If you enjoy singing and having fun then come and join Swavesey Community Choir. We meet every Wednesday in term time in St. Cecilia's Hall at SVC, from 7.30pm - 9pm. You don't need to be able to read music and no auditions needed, tenor and bass voices particularly welcome. For further details contact Chrissie Richardson 07881 824095. Website: <a href="http://www.swaveseycommunitychoir.co.uk">www.swaveseycommunitychoir.co.uk</a>
Swavesey District Bridleway Association	A liaison group representing local horse riders whose main aim is to protect existing and create safe new horse riding links between all local villages. New members welcome. Regular Newsletter/Social events calendar. Please contact Sue Rogers (01954) 232758
Swavesey & District History Society	Meet every third Tuesday in the month, 7.30pm, Global Resources Centre, SVC. Contact Carolyn Redmayne, Secretary (01954) 230037
Swavesey Institute Football Club	New players always welcome, please contact: Phil Baines on 01954 200377 [Saturday sides] or Jerry Ladell on (01954) 201018 [Veterans side].
Linedance	Linedance classes held on Wednesday mornings at the Bethel Baptist Church 9-30 to 11-30 am. Beginners always welcome. Contact Deborah Walker 01954231382 Email: <a href="mailto:deborahwalker105@talktalk.net">deborahwalker105@talktalk.net</a>
Swavesey & Over Conservation Society	Meet at Bethel Baptist Church, Middlewatch Swavesey CB24 4RP commencing at 7.30pm on the 2 <sup>nd</sup> Wednesday of the month unless otherwise stated. If you need a lift: PHONE: Trevor Grange - 01954 230119 or Pat Miles - 01954 780485. Guests Are Always Welcome!
Swavesey & Over Tennis Club	Club night 1 October to 1 April is on Monday, 7.00 to 9.00pm. From 1 April - 30 September there will be club nights on both Mondays and Wednesdays. We welcome new members from anywhere in the locality. Further information from <a href="mailto:s.taylor996@btinternet.com">s.taylor996@btinternet.com</a> <a href="https://swaveseyovertennis.wixsite.com/sotc">https://swaveseyovertennis.wixsite.com/sotc</a>
Swavesey RADsoc	Friendly local drama group staging two or three productions a year. New members always welcome. Contact: Nathalie Balzano: <a href="mailto:nathaliewoodward@hotmail.com">nathaliewoodward@hotmail.com</a> Visit our website at <a href="http://www.swaveseyradsoc.org.uk">www.swaveseyradsoc.org.uk</a>
Swavesey Speakers	Develop your public speaking skills at this Toastmasters International club. Guests welcome! 1 <sup>st</sup> & 3 <sup>rd</sup> Tuesday of every month at the Memorial Hall from 7pm to 9pm (occasional venue change). More details: <a href="http://www.swaveseyspeakers.toastmastersclubs.org">www.swaveseyspeakers.toastmastersclubs.org</a> or call/text Faye on 07908 443610.
Swavesey W.I.	We meet every second Monday of the month at 7.30pm in the Memorial Hall. New members are always welcome to enjoy a variety of invited speakers and have a chat and cup of tea/coffee afterwards. For further information contact Linda Saunders (01954) 201162
Women's Walking	Women's Walking on Mondays and Fridays at 10:00AM. Meet on Market Street green. Walk for approximately one hour on pathways in and around Swavesey. A chance to exercise and chat. Reasonably robust footwear recommended. All welcome. Clare Fox 01954 202882

# THE MERIDIAN ADVERTISER

## February/March

## Landscaping & Garden Services

*Grower & Supplier of Trees, Shrubs & Hedges*



- ✘ Supply and or planting of trees, shrubs and hedges
- ✘ Cutting / Pruning of trees, shrubs and hedges.
- ✘ Land Preparation, spraying, lawn seeding and turfing
- ✘ General maintenance, clearance and repairs
- ✘ Fencing, Gates and Paving

For a FREE estimate phone :- 07786699977  
or 01954 770306  
or visit [www.eparish-landscaping.co.uk](http://www.eparish-landscaping.co.uk)  
or Email : [edwin@parishnet.co.uk](mailto:edwin@parishnet.co.uk)




■ ■ ■ ■ **Sue Allen**  
Bespoke Framing

- Photos, prints, oil paintings, cross-stitch, mirrors & glass replacement
- Garments including football shirts, christening gowns and first shoes
- Large selection of frame styles
- Collection and delivery service available
- Based in Over



For all enquiries please contact Sue on **01954 203272** or (m) **07779 528 408**  
suzanneallen64@gmail.com

# M.B. FLACK

Interior & Exterior  
Painter & Decorator  
& Repairs

30+ Years Experience  
in the trade.

**Free Estimates**

Telephone  
**01954 231 915**

# ALEX ARTHURS

BUILDING SERVICES

ALL ASPECTS OF BRICKWORK UNDERTAKEN

EXTENSIONS • TRADITIONAL BRICKWORK • ALTERATIONS  
GARDEN WALLS • CHIMNEY REBUILDING • REPOINTING  
FIREPLACES • STONE SILLS AND THRESHOLDS

PAVING • SLABS & NATURAL STONE • BLOCK PAVING  
CONCRETING • GROUNDWORKS • FENCING • DECKING

FOR A FREE QUOTATION & ADVICE CALL ALEX ARTHURS

**01954 232050 or 07841 433652**



**wilderspin**  
GARAGE LTD

*A local family-run business*

**MOTOR -  
HOME SERVICING -  
MOT'S & HABITATION CHECKS  
ALL DONE ON SITE**



## SERVICING & REPAIRS

EXHAUSTS | BATTERIES | TYRES | CLUTCHES | BRAKES | TIMING BELTS

## M.O.T. TESTING CENTRE

CLASSES 4,5 & 7 | MOTOR HOMES | MINI BUSES  
CARS | VANS | LIGHT COMMERCIAL

**FREE**  
USE OF  
COURTESY CARS

**FREE**  
WINTER  
HEALTH CHECK

**FREE**  
COLLECTION AND  
DELIVERY SERVICE

OAKTREE ROAD | FEN DRAYTON | CB24 4SS  
Tel: 01954 230273 | Email: [service@wilderspins.net](mailto:service@wilderspins.net)  
[www.wilderspin-garage.co.uk](http://www.wilderspin-garage.co.uk)



# YOUR PERSONAL WEALTH. OUR PERSONAL RESPONSIBILITY.

At Tilney, we have been helping clients achieve their financial goals for more than 180 years. Whether you are saving for retirement, want to pass on your wealth or would like to have your investments managed by an expert, we can do the same for you.

To find out how we can help you, please call our Cambridge office on **01223 452 840** or email [neil.trickett@tilney.co.uk](mailto:neil.trickett@tilney.co.uk) for Investment Management or [laura.ingram@tilney.co.uk](mailto:laura.ingram@tilney.co.uk) for Financial Planning.



Investments carry risk –  
investors can lose money investing.  
[tilney.co.uk](http://tilney.co.uk)

PLANNING | ADVISING | INVESTING

## Do you need a chiroprapist? Are you sure?



As a fully qualified foot health practitioner  
I am trained in the following:

- Diabetic foot health care
  - Toenail cutting
  - Corn and callous removal
  - Bunion relief
  - Minor wound dressing
- And the treatment of many other foot health problems.

**All in the comfort of your own home.**

**Tracy Griffiths  
Foot Health Practitioner**

Call today to make an appointment  
Telephone: 07840 636883  
Email: [tracy.griffiths@hotmail.com](mailto:tracy.griffiths@hotmail.com)

# C & BLINDS C

*Specialists in Blinds | Any size | Any colour*



Vertical Blinds • Roller Blinds  
Venetian Blinds • Repairs • Roman • Pleated  
Perfect Fit • Wooden • Roof Blinds  
Awnings • Fitting Service

Free Estimates & 1 Year Guarantee

**10%  
OFF**  
Valid on all  
orders

**Tel: 01223 211 171 • Mob: 07761 262070**  
**Email: [colincoleman64@hotmail.com](mailto:colincoleman64@hotmail.com)**



## Alpha Cars

**01954  
23 23 00**

[www.alphacarsonline.co.uk](http://www.alphacarsonline.co.uk)

Your local, reliable taxi firm  
*think taxi, think Alpha Cars*

- Corporate Accounts Welcome • Nights Out
- Airport Transfers • Village to Village

# Buttercups CHILDCARE LTD

Childcare and Early Years education for children aged 4 months to 5 years.

We are now open and following stringent Government guidance.

Staff trained in Covid-19 Awareness.

Monday to Friday, 7.30am to 6pm (excluding Bank Holidays), 50 weeks a year.

2 and 3 year old funded spaces available (including 30 hours.)

Video tour available on request.

Find us in Gladeside, Bar Hill, Cambridge, CB23 8DY.

Contact the Nursery

Phone: 01954 488081

Email: [nursery@buttercupschildcareltd.co.uk](mailto:nursery@buttercupschildcareltd.co.uk)



[www.buttercupschildcareltd.co.uk](http://www.buttercupschildcareltd.co.uk)

## Sales: Servicing Salt

- ▶ Supply & Installation Service
- ▶ Servicing & Repairs
- ▶ Drinking Water Systems
- ▶ Salt Delivery & Collection

[www.aquastream-softeners.co.uk](http://www.aquastream-softeners.co.uk)

Unit 17 Meridian, Buckingham Business Park, Anderson Road, Swavesey, Cambridge, CB24 4AE

**AQUASTREAM**  
Water Softeners limited

01954 230898



**Authorised  
Ecowater & Kinetico  
Dealership**



## Andy Tibbett & Sons Painting & Decorating



- \* All internal & external work carried out to a high standard
- \* Trade references can be supplied
- \* Very competitive pricing
- \* A prompt & polite service from a name you can trust



Telephone: 01954 230810

Mobile: 07717 493723

Email: [andrewtibbett@hotmail.co.uk](mailto:andrewtibbett@hotmail.co.uk)



# Ash Croft Veterinary Surgery

169 St. Neots Road,  
Hardwick, Cambridge CB23 7QJ  
Mon.-Fri. 8.30am - 10.30am  
4.30pm - 7.00pm  
Saturday 9.00am - 11.00am  
Sunday 10.00am - 11.00am  
Tel: 01954 210250

Unit 1 Pendrill Court, Ermine Street North  
Papworth Everard, Cambridge CB23 3UY  
Monday, Wednesday, Friday 11.30am - 1.30pm  
Saturday 12noon - 1.30pm  
Tel: 01480 831615

Laura Wood MA, VetMB, MRCVS  
Simon Shore MA, VETMB, MRCVS  
Dragan Tomovic BVSc, MRCVS  
Consultations by appointment only

# BA Building Services

**EXPERIENCED LOCAL BUILDER**

*For all your building requirements*

- All aspects of Brickwork
- Extensions
- Patios, Block Paving, Fencing
- Conservatories
- Porches, Doors & Windows
- Tiling
- Bathroom & Kitchens

**ALL ENQUIRIES WELCOME**

TEL 01954 232 241

MOBILE 07952 339 227

# G B Builders

NO JOB TOO SMALL

FOR ALL MAINTENANCE RENOVATIONS  
AND DIY WORK

All general building repairs & odd jobs  
Specialist in Painting & Decorating  
Groundwork & Grass cutting

- Fencing
- Brickwork & Plastering
- Plumbing
- Driveways, Paths, Patios
- Carpentry
- Slabbing
- Roofing
- Concreting
- Tiling
- Blockpaving
- Drainage
- Guttering

Call Today  
07877 742420  
Or 01480 437511  
g.builders@yahoo.co.uk



**Chartered  
Physiotherapist**

**Susannah Jennings BSc (Hons)  
MCSP, HCPC, MAACP**



Musculo-Skeletal Injuries:

- Back & Neck Pain
- Muscle & Joint Pain
- Rehabilitation after Surgery
- Postural Conditions (including Post & Ante Natal)
- Mobility Difficulties

Treatments Available:

- Joint Mobilisation & Manipulation
- Soft Tissue Massage and Stretching
- Acupuncture
- Mobility Assessments
- Electrotherapy
- 1:1 Clinical Pilates
- Rehabilitation Programs

31 Thistle Green, Swavesey, Cambridge. CB24 4RJ.  
Tel: 07970 548205

Email: [susie@swaveseyphysio.co.uk](mailto:susie@swaveseyphysio.co.uk)  
Web: [www.swaveseyphysio.co.uk](http://www.swaveseyphysio.co.uk)

# F.W. COOK FUNERAL SERVICE

49 Church Street Willingham

Tel Willingham 260325

Andrew Cook Dip FD Kay Cook Dip FD MBIE

A long established family business providing a personal 24 hour service

Golden Charter pre-payment funeral plans available

# COOK'S MEMORIALS

New memorials and refurbishments  
Brochures available on request



**Want to bring your outdoor  
living ideas to life?**

Push your driveway, garden & outdoor living area to its  
full potential with iScape Landscaping



Paving & Driveways



Decking & Fencing



Water Features



Hard Landscaping



Turfing & Lawn Care



Path & Patios

01954 202 232 | 07738 255 003  
[dan@iscapelandscapingcambs.co.uk](mailto:dan@iscapelandscapingcambs.co.uk)  
[iscapelandscapingcambs.co.uk](http://iscapelandscapingcambs.co.uk)

# A. R. CATER

Carpentry & Joinery

Established 1984



- KITCHENS •
- WARDROBES •
- CUPBOARDS •
- SECURITY LOCKS SUPPLIED & FITTED •
- COVINGS FITTED •
- UPVC FASCIAS, SOFFITS & GUTTERING •
- TILING TO KITCHENS & BATHROOMS •
- GENERAL PROPERTY MAINTENANCE •

*CALL TODAY FOR A  
"FREE ESTIMATE"*

**01954 - 232069**

OR

**MOBILE 07778 307578**

**IAN R NORMAN**  
HEATING AND PLUMBING



**Gas Boiler Servicing- Domestic & Commercial**

**Plumbing, Heating, Gas, LPG,  
Landlords Certificates**

Tel: 07827 938150 Email: [normanian@hotmail.co.uk](mailto:normanian@hotmail.co.uk)

**Cottenham based, covering all of South Cambs**



**DDB Home Solutions Limited**

Making your house a home

We are a company based in Needingworth specialising in kitchen and bathroom installations and can also supply the following services;

- Carpentry and Joinery
- Plumbing
- Electrical installation – Part P registered
- Floor and wall tiling
- Less-abled Bathrooms and Wet Rooms



We are a member of the Institute of Carpenters and also the Guild of Master Craftsmen with over twenty years experience

Visit our website for more information - [www.ddbhomesolutions.co.uk](http://www.ddbhomesolutions.co.uk)  
For an informal discussion or quote please contact Darren or Jo Turnbull  
Tel: 01480 495984, or email us at [Darren@ddbhomesolutions.co.uk](mailto:Darren@ddbhomesolutions.co.uk)



ELECSA



# Avenue

Property Management

## Quality Property Rental service

A local, personal & professional approach to all aspects of property management & letting

We provide a friendly & efficient service to Landlords and Tenants supported by 22 years' property experience

We look forward to hearing from you for an informal chat

Tel: 01223 353 353 or 01354 691 560

[enquiries@avenue-properties.co.uk](mailto:enquiries@avenue-properties.co.uk)



JK Reflections

restore:relax:renew

Massage

Facials

Relaxation techniques

Mindfulness

Tropic Ambassador – freshly made, vegan, cruelty-free, green skincare products. *Free Skincare consults in Swavesey/remotely.*

Website: [www.jkreflections.co.uk](http://www.jkreflections.co.uk)

Email: [jo@jkreflections.co.uk](mailto:jo@jkreflections.co.uk)

Phone: 07714 625243

Facebook: JK Reflections

Gift Vouchers & e-vouchers

Professional Arborists based in Swavesey, Cambridge. We offer a free, no obligation quote. Advice on any trees/hedges. Deal with any conservation area or Tree Preservation Order Applications. A freindly, efficient service, leaving your garden or land clean and tidy.

Tree Felling / Dismantling

Crown reduction / thin / lift / deadwood

Pruning / Planting

Hedge trimming / reducing / removal

Stump Grinding

Seasoned logs

NPTC Qualified Staff  
Full Liability Insurance



# DELLAR

TREE SERVICES

30A Thistle Green, Swavesey  
Cambridge CB24 4RJ

01487 740348 / 07703 568 474  
[dellartreeservices@hotmail.co.uk](mailto:dellartreeservices@hotmail.co.uk)

# R.A. Denton

## Painting & Decorating

*High Quality*



Industrial

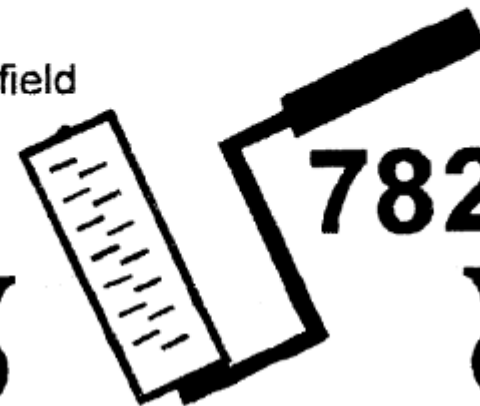
Commercial

Domestic



102, Stonefield  
Bar Hill  
Cambridge  
CB3 8TB

782472



# Put your love in writing

Be there for your family  
when they need you most

- ✓ Protect your children and partner with a Will
- ✓ Look after elderly parents with Lasting Powers of Attorney
- ✓ Set up a Trust for a disabled child
- ✓ Protect your family's property and assets
- ✓ Minimise care home fees and funeral costs
- ✓ Reduce Inheritance Tax and Probate fees

**Take  
action  
today!**

Call, email or text Just Wills  
for a FREE home consultation  
Phone: **01223 655646**  
Mobile: **07930 197432**  
[info@justwillscambridge.co.uk](mailto:info@justwillscambridge.co.uk)

Just Wills (Cambridge) is the local office of Just Wills & Legal Services Ltd. Since 1989 we've helped more than 150,000 families like yours plan for the future with our friendly, money-saving service and professional expertise. Call us for a chat and advice!

- Wills, Trust and Probate specialists
- Society of Trust and Estate Practitioners (STEP) qualified solicitors
- Backed by full professional indemnity insurance
- Member, The Society of Will Writers
- Member, Professional Association of Legal Services

**JUST WILLS**  
Just Wills (Cambridge) LLP

Just Wills (Cambridge)  
St John's Innovation Centre  
Cambridge CB4 0WS



*For all your building requirements,  
please contact Paul Hendry*

## **GEORGE HENDRY & SON** **Building Contractors**

33 Wallmans Lane, Swavesey  
Cambridge, CB24 4QY

Telephone: 01954 200613  
Mobile: 07778686791  
Email: [prh.ghs@gmail.com](mailto:prh.ghs@gmail.com)

**Eyes of Swavesey**  
Opticians



2 Station Road, Swavesey, Cambridgeshire, CB24 4DJ  
T 01954 231158 E [info@eyesofswavesey.co.uk](mailto:info@eyesofswavesey.co.uk)

Under new ownership.  
For all your eyecare & eyewear needs.  
Come to your local, friendly, professional  
& caring optician at Eyes of Swavesey.



# La` Mac

Hairdressing for all  
the family



- ◆ Friendly Service
- ◆ Traditional & up to date styling
- ◆ Fully trained in all colouring techniques
- ◆ Senior Citizens discount (Tue & Wed)
- ◆ Open Tuesday - Saturday (late 7.00pm Thursday)
- ◆ Wedding and Ball packages

We aim to provide a professional yet friendly atmosphere to make your visit as pleasant an experience as possible. So if you are thinking of a change please pop in and ask for Wendy, Charlotte or Estelle. They will be pleased to help

 **01954 231 445**     **2a Market Street**     **Swavesey**  
**Cambridgeshire**     **CB24 4QP**

## STEPHANIE'S CARE

Care and Support in your own home

Offering Compassion, Kindness Confidentially  
as well as Personnel Care to my clients

I am local so if you think I might  
be able to help you please  
contact me for an informal chat on  
the phone or in your home

Telephone: 01353 777 789  
Mobile: 07800 668 788

Qualified in Health & Social Care Level 3  
18 years extensive experience  
Fully Insured & Enhanced DBS Checked  
Reference's are available

# Swavesey Windmill

Hale Road Swavesey Cambridge CB24 4QP  
Tel: 01954 232 247

Fantastic function hall with licensed Bar available for hire  
for any event, set in the grounds of The Windmill.

Private parties, Fundraising  
Charity Nights, & Band Concerts!

Licensed with Cambridge County Council  
For Weddings, Civil Partnerships,  
& Baby Naming Ceremonies

To book to view or hire please phone Pam or Lisa.  
To keep updated on events follow  
Swavesey Windmill on Facebook





Let me take care of your pet family!

- ☑FREE HOME DELIVERY
- ☑Local Cambridge Business
- ☑Quality Food at Direct Prices
- ☑Pet Food Treats & Accessories
- ☑All Ingredients Declared
- ☑Gluten Free & Hypoallergenic Foods
- ☑Let Me Deliver Your Cat Litter




Call Teresa & Stuart  
your Cambridge Nutritional Advisors on  
01954 712633 / 07516184185

**OSCAR** much more than pet food-  
*you call i fetch!*

*Hassle free!*



www.oscar.co.uk Search for Oscar Pet Foods Cambridge

Local, family run business who thrive on transforming project dreams into a stunning reality!

*Extensions – Conversions – New Builds – Groundworks – Bathrooms*

*Kitchens – Flooring – Electrical works – the list is endless!*

[www.ajcarpentry.co.uk](http://www.ajcarpentry.co.uk)

07989 341724 / 07812 671495

\*Special Fees apply for readers\*



114-116 Regent Street, Cambridge, CB2 1DP Tel: 01223 462 013

There's a reason these signs are everywhere... ..we're serious about your property

Call now for a free market appraisal  
Tel: 01223 462013  
Email: [cambridge@morrisarmitage.co.uk](mailto:cambridge@morrisarmitage.co.uk)

114-116 Regent Street, Cambridge, CB2 1DP Tel: 01223 462 013



The truly independent cruise & travel company  
01954 232 802 | [sales@ponderstravel.co.uk](mailto:sales@ponderstravel.co.uk)

The World of Travel is now in Over High Street.  
Ponders Travel opened a new Travel Agency in January 2019.

Opening hours  
Monday – Friday, 9.30am – 5.30pm  
Saturday, 9.30am – 4.00pm

Pop in and see our new shop at The Gallery, 25 High Street, Over  
Special Offers | Tailor Made holidays | 35 years' experience

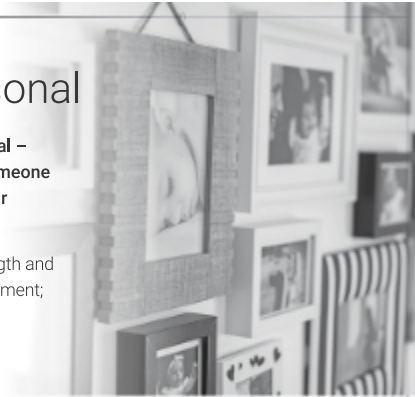
Contact us today for more information  
01954 232802 | [sales@ponderstravel.co.uk](mailto:sales@ponderstravel.co.uk) | [www.ponderstravel.co.uk](http://www.ponderstravel.co.uk)

## Financial advice made personal

We recognise that talking about money and finances is personal – sometimes sensitive. So it's reassuring to know that there's someone on hand who can help you address your needs, understand your goals and realise your dreams.

We offer a friendly and approachable service, backed by the strength and security of FTSE 100 company, St. James's Place Wealth Management; and being local means we're here to help whenever you need us.

Please do get in touch for a chat.



TAIT FINANCIAL SERVICES LTD

Associate Partner Practice of St. James's Place Wealth Management

Tel: 01954 231768 | 07768 305151  
Email: james.tait@sjpp.co.uk  
www.taitfinancialservices.co.uk



The Partner Practice is an Appointed Representative of and represents only St. James's Place Wealth Management plc (which is authorised and regulated by the Financial Conduct Authority) for the purpose of advising solely on the group's wealth management products and services, more details of which are set out on the group's website www.sjpp.co.uk/products. The 'St. James's Place Partnership' and the titles 'Partner' and 'Partner Practice' are marketing terms used to describe St. James's Place representatives.

SJP11596 V1 (12/19)

## Rothwell's Carpet Cleaning

**Carpet, Stone Floor,  
Upholstery & Rug Cleaning**

*A few points that make us stand out,*

Rothwell's has been in business since 1993

We're an honest local family firm.

Our large truck mounted machines mean more cleaning & drying power for the best results possible.

Members of both the NCCA and TACCA.

We will move the furniture.  
100% satisfaction or it's FREE.

*Call Oliver and Max Campbell  
for expert help today.*

**01223 832 928**

**www.Rothwells.biz**

Contact us:  
david@rosegatefarm.co.uk  
07922 588171



Rose and Crown Road Road, Swavesey

Butchery Open Fridays (8.30 am - 5.30 pm) & Saturdays (8.30 am - 1.30 pm)

**www.rosegatefarm.co.uk**

*Bespoke Butchery – butchered to suit your requirements*

### BEEF

- Primarily from our own Hereford / Angus herd
- All at least 21-day aged

### LAMB

- Swavesey born and bred
- individual cuts, or ¼, ½ or whole lamb packs available

### PORK

- Bred & reared here at Rosegate Farm.
- Home-made sausages, dry-cured bacon and gammons (smoked and unsmoked)
- Cooked Ham

### CHICKEN (sourced from Diaper Poultry)

- Sutton Hoo Free Range
- St George Chicken

**BBQ Meats – Burgers – Kebabs – Glazes**

*See you in the butchery!*



# embe.

Professional, Local Painting And Decorating

embe\_pad @embepad 07931779042 mike@embe-pad.co.uk

**www.embe-pad.co.uk**

## LIGHT REMOVALS

Small Houses to Single Items

ANY DISTANCE  
7 Days a Week

For a Free Quote

Telephone:

01480 352220

07711 556833

[www.cambslightremovals.com](http://www.cambslightremovals.com)

## Accountancy & Taxation Services



Tax Returns  
Business Accounts  
Bookkeeping  
VAT Returns  
Payroll  
Audits

L.A. Wells FCCA CTA

Chartered Certified Accountant, Chartered Tax Advisor

4 Scone  
Fenstanton  
Huntingdon  
Cambridgeshire  
PE28 9QG

Tel: 01480 466 197



[www.lwells.co.uk](http://www.lwells.co.uk)

## ANDREW EVANS

01954 780 999 – 01223 864335

email: [andrew@omegaclean.co.uk](mailto:andrew@omegaclean.co.uk)  
[www.omegaclean.co.uk](http://www.omegaclean.co.uk)

- ✓ Carpet Cleaning
- ✓ Upholstery Cleaning
- ✓ Tile & Grout Cleaning
- ✓ Leather Cleaning
- ✓ Oriental Rug Cleaning
- ✓ Carpet & Fabric Protection
- ✓ Allergy Relief Treatment
- ✓ Odour Eradication
- ✓ Stain Removal
- ✓ Carpet Fitting

Family Business Since 1980



## MOBILITY EQUIPMENT

SCOOTERS, WHEELCHAIRS,  
RISING CHAIRS, BEDS,  
WALKERS, TOILET, BATHING,  
KITCHEN AIDS, STAIRLIFTS,  
CONTINENCE CARE

Orchard Mobility Centre  
Scotsdales Garden Centre  
High Street  
Horningsea  
CB25 9JG



01223 863908

Mon to Sat 9.00 - 5.00



Open 6 days a week  
**Total  
Relaxation**  
at the farmhouse

**Tel: 01954 789 344**

Aromatherapy, Body Massage, Indian Head Massage, Reflexology, Hot Stone Massage, Hopi Ear Candles, Facials, Nail Extensions, Manicures & Pedicure, Gel Polish, Lash and Brow Treatments, Waxing, Hairdressing

Gift vouchers always available

**[www.total-relaxation.co.uk](http://www.total-relaxation.co.uk)**

email: [total.relaxation@ntlworld.com](mailto:total.relaxation@ntlworld.com)

The Old Farmhouse, Gladeside, Bar Hill, Cambridge CB23 8DY

## ARE YOUR WINDOWS READY FOR THE SUMMER ?

Give them a new lease of life with CST

### NO CALL OUT CHARGES

All repairs carried out on UPVC,  
Aluminium or Timber Installations

- ▶ Windows, Doors, Conservatories
- ▶ Conservatory Roofs
- ▶ Misted or Broken Glass
- ▶ Broken Handles, Hinges and Locks
- ▶ Cat Flaps and Letter Plates
- ▶ Door panel fitting

## C.S.T

DOUBLE GLAZING REPAIRS  
& Lock Maintenance

Tel: 01480 462 948

Mob: 07973 682562

[www.cstupvcrepair.co.uk](http://www.cstupvcrepair.co.uk)

[cst.dgcrepairs@googlemail.com](mailto:cst.dgcrepairs@googlemail.com)

## T.N. WALSH (AIP-RP)

### PLUMBING & HEATING

5 ACORN AVENUE  
BAR HILL  
CAMBRIDGE  
CB23 8DT

TELEPHONE 01954 780252

MOBILE 07887 561525



Reg. No.  
23354



026851 I

**Stamp Chiropody & Podiatry**  
**Casey Stamp MCPod BSc (Hons)**  
**HCPC registered CH15068**



- General chiropody – nails, hard skin & corns
- Diabetic foot care
- Children's Feet – Growing pains, Verrucas, etc.
- Sporty Feet & associated injuries + pains
- Ingrowing toe nails
- Custom made Orthotics/insoles
- Dancing feet – we'll keep you on your toes
- Biomechanics & Gait analysis

New Clients Always Welcome.

Find us at:

Willingham Medical Practice,  
 52 Long Lane, Willingham,  
 Cambridge, CB24 5LB

Tel: 01480 464507 or 07807505534

Also available at:

Salus Wellness Clinics  
 47 Norfolk St

Cambridge CB1 2LD

Tel: 07807 505534

[www.stamppodiatry.co.uk](http://www.stamppodiatry.co.uk)

**CHIMNEY SWEEP**  
**Cambridgeshire**  
**Trading Standards**  
**Approved**



- Fully Insured
- Enhanced CRB Check
- Certificates issued
- Bird nests removed
- All types of chimney swept
- No Mess, No Fuss



MAKE AN APPOINTMENT  
 TODAY WITH

**SWEEPOVER**

Tel: 01954 230777

Mob: 07779711458

[www.sweepover.co.uk](http://www.sweepover.co.uk)

19 New Road, Over, CB24 5PJ



The Ultimate  
**FLOOR SANDING**  
 Company

AFFILIATED SERVICE PROVIDER

**Dust Free**  
**Wood Floor Sanding**  
**& Restoration**

Is your Wooden Floor in need of  
 Sanding?

Call us today **01223 863 632**

Please quote "Swavesey Mag"

[www.floorsandingcambridge.co.uk](http://www.floorsandingcambridge.co.uk)



**Discover...**

A selection of beautiful individual villas & houses with pools in  
 tranquil settings & areas of traditional local culture.

GREECE • SPAIN • LANZAROTE • BALEARICS  
 PORTUGAL • FRANCE • ITALY • CROATIA

**Vintage**  
 travel

Now in our 22nd year

Your  
 Local Holiday  
 Company

Call for a brochure or to speak to one of our specialists

**01954 261431**

or visit our website [www.vintagetravel.co.uk](http://www.vintagetravel.co.uk)



**Delicious**  
 & delivered

- FREE NATIONWIDE DELIVERY
- MEALS FROM ONLY £2.99
- OVER 300 TASTY RECIPES
- NO CONTRACT,  
 NO COMMITMENT

Call us for your **FREE** brochure

**01371 876970**

[wiltshirefarmfoods.com](http://wiltshirefarmfoods.com)



Wiltshire Farm Foods



# MAGAZINE ADVERTISING RATES

ADVERTISING RATES AS FROM APRIL 2022.  
For a one year inclusion i.e. six issues.

Size	Advertiser	Magazine
Full page	£215	£285
Half page	£110	£158
Quarter page	£72	£97

The following rates are for one inclusion only and as a premium rate is already charged will be positioned in the magazine section:-

Half page one inclusion only £75

A small charge may be made for creating and amending artwork

For all advertising details please contact:

David Gedny Tel: 01954 231305 Mob: 079 022 40061 or

Email: [adverts@swaveseymeridian.org.uk](mailto:adverts@swaveseymeridian.org.uk)



Plumbing and heating supplies  
to the trade and public



We are a local independent company supplying  
all your plumbing & heating needs, including:

**Bathroom Taps • Boilers • Bathroom Suites  
Underfloor Heating • Central Heating Radiators  
Heated Towel Rails • Showers • Kitchen Taps  
Sinks • Baths • Sanitaryware  
Plastic Plumbing Systems • Fittings**

*Do not hesitate to ring, email or visit...*



Unit 10, Norman Way Industrial Estate, Over, Cambridge CB24 5QE.  
Tel: 01954 230268. E-mail: [info@dandtsupplies.co.uk](mailto:info@dandtsupplies.co.uk). [www.dandtsupplies.co.uk](http://www.dandtsupplies.co.uk)

## EXTRA MAGAZINES

Send a Meridian Magazine subscription to your favourite Auntie, or to a friend who has recently left the village.

Six issues (one year) costs only £12.00.

Send a cheque (made out to 'The Meridian Magazine') and the address of the recipient, to:

Jan Waller, Meridian Subscriptions,  
35 Carters Way, Swavesey, Cambridge, CB4 5RZ

## NOTIFICATION OF MAJOR EVENTS

Please use this form to notify us of any major events you are organising so that we can publish the dates in the magazine and on the website at [www.swaveseymeridian.org.uk](http://www.swaveseymeridian.org.uk). It is hoped this will avoid major events clashing on the same day. Please send to the Editor, 14 Black Horse Lane, Swavesey.

Event \_\_\_\_\_

Location \_\_\_\_\_ Date \_\_\_\_\_ Time \_\_\_\_\_

Contact Name \_\_\_\_\_ Tel No. \_\_\_\_\_

## BIRTHDAYS, ANNIVERSARIES & SPECIAL OCCASIONS

If you would like to mark any occasion that is special to you or somebody that you know by announcing it in this magazine, please fill in the form below.

Also supply your name and contact details, and return to the Editor by the copy date. We will endeavour to include it in our next issue.

### SHORT MESSAGE:

---



---



---



USEFUL TELEPHONE NUMBERS & WEBSITES		
Doctor's Surgery (Swavesey)	01954 230202	
Doctor's Surgery (Over)	01954 231550	
<b>Police:</b>		www.cambs.police.uk
Emergency	999	
All Non Emergency Calls	101	
Swavesey Parish Council	01954 202982	www.swavesey.org.uk
Swavesey Pre-school Enquires	01954 273312	preschool@swavesey.cambs.sch.uk
Swavesey Primary School	01954 273312	www.swavesey.cambs.sch.uk/
Swavesey Village College:	01954 230366	www.swaveseyvc.co.uk
Community Office	01954 234488	www.swaveseyvc.co.uk/community-education/
Swavesey Post Office	01954 232311	
Cambridgeshire County Council:		www.cambridgeshire.gov.uk
General Enquiries	0345 045 5200	
Library Service	0345 045 5225	www.cambridgeshire.gov.uk/leisure/libraries
South Cambs District Council	01954 713000	www.scams.gov.uk
Electricity (UK Power Networks):		
Power Cut Report Line	0800 3163105	www.ukpowernetworks.co.uk
Gas Emergencies (National Grid)	0800 111999	www.nationalgrid.com/uk/gas
Water (Cambridge Water Company):	01223 706050 (opt 4)	www.cambridge-water.co.uk
Sewage (Anglia Water) Emergency	08457 145145	www.anglianwater.co.uk
Environment Agency (Flood Line):	0845 988 1188	www.environment-agency.gov.uk
Incident Reporting Line (pollution etc)	0800 807060	
Samaritans	116 123	www.samaritans.org
Addenbrooke's Hospital:	01223 245151	www.addenbrookes.org.uk
Hinchingbrooke Hospital	01480 416416	www.hinchingbrooke.nhs.uk
NHS Direct	111	111.nhs.uk
Airports + Road & Rail:		
Local Taxi: Alpha Cars	01954 232300	www.alphacarsonline.co.uk
Gatwick	0844 3351802	www.gatwickairport.com
Heathrow	0844 335 1801	www.heathrow.com
Luton	01582 405100	www.london-luton.co.uk
Stansted	0844 3351803	www.stanstedairport.com
Traveline (Bus Coach & Rail)	0871 200 22 33	www.traveline.info
Local Timetables:		
Cambridgeshire Bus Information		www.cambridgeshirebus.info
Stagecoach	01223 433250	www.stagecoachbus.com
National Express Coaches	0871 781 8181	www.nationalexpress.com
Whippet Coaches	01954 230011	www.go-whippet.co.uk
National Rail	03457 48 49 50	www.nationalrail.co.uk
Veterinary Practices:		
Village Vet (Longstanton)	01954 780027	www.villagevet.co.uk
Ash Croft (Hardwick)	01954 210250	www.ashcroftvet.co.uk

**SWAVESEY LIBRARY is open for browsing  
on Tuesday afternoons 3.30pm -5.30pm,  
Wednesday evenings 5 – 7pm and Saturday  
mornings 10 – 12 noon.**

**We look forward to seeing you back in the Library.**

**The library offers:**

**Hundreds of Children's and Adult books to borrow**

**SELECT & COLLECT \***

**On-Line Reservation pick-ups**

**Book returns for any library**

**Swavesey `Loan Service'\*\***

\*The `Select & Collect' service is operated through the Cambridgeshire Library service, see web site for details.

[https://cambridgeshire-self.achieveservice.com/service/Select and Collect](https://cambridgeshire-self.achieveservice.com/service/Select_and_Collect)

\*\*If you would like to use the `Swavesey Loan Service' please email/phone [Richard94.hart@virgin.net](mailto:Richard94.hart@virgin.net) / 01954 202707 or [Doughuntuk@yahoo.co.uk](mailto:Doughuntuk@yahoo.co.uk) / 01954 232478

Swavesey library can be found in the Old Entrance Hall, Swavesey Village College. It's entrance is at the right of the Gibraltar Road car park. Just follow the library signs.



“ I come home  
with glue in my hair,  
and a feeling that  
I have empowered  
young women

SHEENA  
Brownies volunteer

”

Inspire girls in Swavesey today  
Volunteer at [girlguiding.org.uk](http://girlguiding.org.uk)



Meet new people, gain skills and  
help girls discover their full potential.  
Discover the benefits of volunteering with Girlguiding.  
If you'd like to know more or visit and see what we do  
email Claire: [swaveseyagleowl@gmail.com](mailto:swaveseyagleowl@gmail.com)

