

A close-up photograph of a large cluster of bright red holly berries. The berries are small, round, and have a dark, star-shaped mark on their surface. They are surrounded by dark green, glossy leaves. The background is filled with more of the same berries and leaves, creating a rich, textured scene.

THE MERIDIAN SWAVESEY

No. 199 December/January 2023



Christmas Carols

GATES OPEN 5.30PM - CAROLS AT 6PM

★ MARKET STREET, SWAVESEY ★

Saturday 17th December

CAROLS WITH A LIVE BRASS BAND | WARM FOOD FROM THE WHITE HORSE |
HOT CHOCOLATE FROM THE NOOK | DRESS UP AND JOIN THE NATIVITY | MEET
THE ANIMALS | RAFFLE | CLO-HO-HO-SING WITH A VISIT FROM SOMEONE
SPECIAL (SPONSORED BY THE NEWSAGENTS) | AND SO MUCH MORE!



EDITORIAL

December! already! we have had a very mixed year in so many ways, Let us hope that 2023 will be a little quieter! One thing that will not be quieter is the amount of traffic coming through our village sometimes it is very difficult to get from one end to the other! The many roadworks do not help the situation plus the vehicles that are parked often not very carefully on the sides of the roads cause problems. Please remember that many of our roads are actually lanes - narrow, plus some have no pavements so proceed with care.

Information on Christmas and New Year events can be found inside or on our website but remember we cannot tell others if you do not tell us!

The Meridian team wish everyone a very restful Christmas and a good start to 2023.

Editor

IN THIS ISSUE ...

Front Cover - Red Berries by Edwin Parish	
Inside Front Cover -	
Inside Back Cover - Christmas Carols	
Back Cover -	
Editorial	page 1
Meridian Committee	page 2
Major Events List	page 2
Dates for your diary and forthcoming events	page 3
Club Reports	page 5-11
Miscellany	page 12-21
Medical News	Page 22-24
School Information	page 26-31
Parish and County news	page 33-39
Churches	page 40-45
Community Groups & Charities table	page 46
Club Information	page 47-49
Advertiser	page 50-74
Extra Magazines, Major Events & Birthday forms	page 75
Useful Telephone Numbers	page 76

MERIDIAN COMMITTEE

Editor:	April Martin	Tel: 01954 200533
Treasurer	David Gedny	Tel: 01954 231305
Production:	Alan Morris	Tel: 01954 202664
Advertising:	David Gedny/April Martin	Tel: 01954 231305 / 01954 200533
Distribution	Selwyn Richardson	Tel: 01954 202974
Subscriptions	Jan Waller	Tel: 01954 230795
Complaints	Maureen Hadfield	Tel: 01954 230414
Proofreading	Alison Lucas	Tel: 01954 232984
Website:	Alan Morris www.swaveseymeridian.org.uk	Tel: 01954 202664
E-mails:	editor@swaveseymeridian.org.uk	
	adverts@swaveseymeridian.org.uk	
	webmaster@swaveseymeridian.org.uk	

Major Events List

This list is intended to avoid major events clashing on the same day. It will only work if we are advised of all such events, so please let us know as soon as you can confirm the details.

A form is available at the back of this magazine. We will list them in this section of the Magazine and also on our website at www.swaveseymeridian.org.uk

Saturday 10 December	Community Choir	Come & Carol - 7.30 St Andrews Church Free Entry
Sunday 11 December	St Andrews	Nutcracker & The Mouse King - 3pm St Andrews Church - Tickets £12.50 under 16's £8 -
Saturday 17 December	Village Carols	Christmas Carols on Market Street Green - Gates open 5.30pm Carols start 6.00pm
Friday 20 January Saturday 21 January Sunday 23 January	RADSOC	Alice in Wonderland - Tickets www.swaveseyradsoc.org.uk or 07563 334555



DATES FOR YOUR DIARY



December

Thursday 1	Refuse Collection	Green & Blue Bins
Thursday 8	Refuse Collection	Black Bin Collection
Saturday 10	Community Choir	Come & Carol - 7.30 - St Andrews Church Free Entry
Sunday 11	St Andrews	Nutcracker & The Mouse King - 3pm St Andrews Church - Tickets £12.50 under 16's £8 -
Monday 12	Parish Council	Full Council Meeting
Thursday 15	Refuse Collection	Green & Blue Bins
Saturday 17	Village Carols	Christmas Carols on Market Street Green - Gates open 5.30pm Carols start 6.00pm
Thursday 22	Refuse Collection	Black Bin Collection
Saturday 31	Refuse Collection	Blue Bin Only (Note Saturday)

January

Saturday 7	Refuse Collection	Black Bin Collection (Note Saturday)
Thursday 12	Parish Council	Planning Meeting
Friday 13	Refuse Collection	Green & Blue Bins (Note Friday)
Thursday 19	Refuse Collection	Black Bin Collection
Friday 20 Saturday 21 Sunday 22	RADSOC	Alice in Wonderland - Tickets www.swaveseyradsoc.org.uk or 07563 334555
Monday 23	Parish Council	Full Council Meeting

Congratulations to Sue Ellington on her award.

Plus: We welcome your contributions and news for The Meridian but **please, please submit it in good time.** Sending it on the deadline or after it makes our job harder especially if you want to display a poster as we have a limited amount of space for these.

If you know you have something that is going to be late please contact the editor and say how much space you think you will need. As a rough guide one page is 500 words if there are photos this goes down to 300. Once the deadline is reached then the laying out of the magazine begins and it is very helpful to know what we have at this point, and no we cannot just "add an extra page!" as the paper size used (A4 folded) is such that one extra page equals 4 in the magazine so one extra page means we then have to find enough content to fill another 3 pages!

Thank you

Your Meridian team

Deadline for the next issue 20th December!



SUMMIT

LANDSCAPES

PAVING - DRIVEWAYS - BRICKWORK
CARPENTRY - GROUNDWORKS

www.landscapingpaving.co.uk
PHONE: 01223-929394

CLUB REPORTS

Swavesey WI News

Dates for diary	
December 12th	Christmas Party
January 9th	Talk on Guide Dogs for the Blind.

Swavesey WI held a very successful cake stall in September, being part of the village outdoor market. Cakes galore, provided by members all sold very quickly and together with a raffle, made for a significant boost to funds.

At the start of our September meeting, our President Margaret Guest, with sadness paid tribute to our late Queen Elizabeth II who passed away peacefully the previous week.

Members' stood for a 2 minute silence in respect and reflection of the Queen's long life of dedication to us all. Our President laid flowers in the village Memory Garden in memory and thanks to Her Majesty for her love and devotion to her family, our nation and worldwide.

We wish King Charles a long reign and we give him and his Queen Consort Camilla our loyalty and support. God Save The King.

Our September meeting continued with a fun evening, when Mary Blackhurst-Hill from the House of Colour gave us many ways to wear our scarves and pashminas. Mary was very entertaining and came with a huge selection of scarves for us all to practice Scarf Tying. We welcomed several visitors to this meeting and we hope they will join us again. Later in the month, several members were found enjoying a taster session of bowls at Willingham Bowls Club.

Sue Smailes, Chair of Cambridgeshire Federation of WI's attended our October meeting. She has held this position for 18 months and looks forward to visiting all 53 WI's in the county while in office. She gave our members a talk on her work and that of the County Federation.

Our speaker at this meeting was Peter Moorefoot, a Swavesey resident who is a crime fiction writer. Peter gave us an account of how he builds on the plots and characters in his books. He is known for the 'Captain Dirac Mysteries' which are set in the South of France. There are five books in this series. His talk was very interesting as it took us to South of France and was enjoyed by all those who love reading crime books.

Peter brought books for members to buy of which he signed for them too.

🎄🎄🎄 MERRY CHRISTMAS EVERYONE 🎄🎄🎄

Two short months this time, the College is closed for Christmas and New Year, of course, so only seven meetings, so please check our website before you turn up. On it you will see that we have a most interesting meeting on 1st Dec. Many of our members find Macrophotography very satisfying, capturing wonderful images of things too tiny to see with the naked eye, so we are eagerly awaiting this talk by Bob Brind-Surch on his work in this field. Our experts will be hoping for plenty of useful advice, while the rest of us will just sit back and enjoy the show. Do come along if you are interested.

The next week, 8th Dec, we have our important Annual 'Joe Sipos Trophy' for colour prints, renamed in memory of our old friend Joe, as he often won this competition. Our last meeting of the year on Dec.15th will be the President's Evening, when once again we are faced with Simon's fiendish Christmas Quiz, after which one can celebrate one's success (or seek consolation) with the help of drinks and nibbles. Once again some members will still be on Zoom, sorry, they will have to bring their own mince pies.

We start again on Jan 5th with something we haven't had before, when Tom Peck will talk about photography using a mobile phone. We all use them in this way, and the quality one can achieve is astonishing nowadays, and they are always to hand when your real camera is somewhere else. Let us see what he suggests we do to take advantage of that.

On the 12th we have Justin Minns with '(More) Interesting Stuff', yes, he has been before and it is very interesting. The following week, 19th, we are back to Zoom, with a talk from Ruth Grindod, Scottish Nature Photographer of the Year in 2019. Normally there is no way we could expect to enjoy one of her talks, good old Zoom has opened up the world. Her talk is 'Colours, Tones and Textures', very atmospheric sea and landscapes.

Our last meeting in January 26th, is our second set subject, another challenge, 'Opposites'. Plenty of scope for interpretation there.

Do come along if anything interests you.

Mo Hadfield

Swavesey Camera Club.

www.swaveseycameraclub.co.uk

Camera Club Exhibition 2023

Saturday 25th March 2023

As in previous years we host an Open Photographic Competition within our Annual Exhibition. Our aim is to encourage photography amongst everyone in the local community. The Competition is open to any non-professional photographers and can be on any subject (but no selfies). Prizes will be awarded in three categories: junior school age, senior school age and adults. Visit our website www.swaveseycameraclub.co.uk for further details.

FREE ENTRY!

MULLED WINE MINCE PIES

COME AND CAROL

**SAT 10TH DEC
7.30PM 2022**

ST ANDREWS CHURCH SWAVESEY

Swavesey Community Choir
Singing for fun

**ALL WELCOME
FREE ENTRY
JUST COME ALONG
VOTE FOR AND SING YOUR
FAVOURITE CAROLS**

www.swaveseycommunitychoir.co.uk

News from the Hale Road Allotments

As I write this we are into full on autumn, which is a very busy time at the allotments. Plot holders will be clearing the now exhausted plants from summer crops, digging the ground and spreading manure, which will feed the soil for next year. Those of us who grow parsnips will be awaiting some frost (it makes them taste better) before digging to see if the exceptionally dry summer has affected the size of the roots. Hopefully by the time of the next issue of the magazine we will be digging lovely parsnips and will be enjoying them roasted! Those who enjoy a brussel sprout will be harvesting those too, so long as they have covered them to keep the pigeons off! Something we learn very quickly when growing on an allotment is that there is always something that wants to eat your crops before you do! However, if we beat the pests there is nothing nicer than having some of your own vegetables with Christmas dinner!

December and January are a quieter time on Hale Road. Any digging not done in the autumn will have to wait until spring. During these colder days plot holders will be planning where everything will be planted in 2023 and looking through seed catalogues for new things to grow. We will all be looking forward to the new season and the beginning of another growing year at Hale Road.

If you would like to explore the possibilities of an allotment and add your name to the waiting list then please get in touch. My details can be found within the Club Information section.

Val (Chair, Hale Road Allotment Association.)

COMBERTON RAMBLERS

Join our friendly group for wonderful walks

Comberton Ramblers walk alternative Sundays between 5-7 miles. We are a friendly / informative group and enjoy exploring the varied countryside in this area. No dogs are allowed except assistance dogs.

Walking is one of the easiest ways to get more active, become healthier and make new friends.

You are welcome to join us on any 2 of our walks to see if our group is for you. Then, once you have enjoyed the views, fun, exhilaration, it is just a case of becoming a member.

Annual membership membership fee is £10.00 per person.

For further information please contact me by emailing : stella.hardwicke2274@hotmail.com or telephoning 01954 210049, mobile 07930951703.

Thank you for reading this.

Stella – Secretary of the Comberton Ramblers

ALAN'S CARPETS

Carpets and Vinyl Supplied and Fitted

We have been in the carpet trade
for over 47 Years!

Samples To Your Home

Measure

Quote

Express delivery & fitting included

Phone 07790 681317

or

07790 544250

R. A. Miller

Plumbing and Domestic Heating

Fenside, 71 Willingham Road, Over
Cambridge CB24 5PE

Tel: 01954 203277 Mob: 07831 853885

Email: robert.miller@ntlworld.com

All plumbing work undertaken

- » New boiler replacement and installation with free quotation.
- » GAS boiler and GAS fire servicing
Landlord Certificates.
- » Heating problems - Diagnosis
and rectification.
- » General plumbing - taps, washers,
pipework, showers, etc.
- » Full and partial Bathroom installation work.

For a reliable and professional service

Robert Miller MCIPHE RP



Office 01954 203 277
Mobile 07831 853 885



CHIMNEY SWEEP

J. L. Wight

City & Guilds Qualified

Advice given /
Problems solved



Certificates issued

Fully Insured



HETAS registered

01954 253315

www.camsweep.co.uk

26 Cow Lane, Rampton

PEST PROBLEM?

Family firm
since 1974

LOCAL QUALITY SERVICE

pest control/prevention/
emergencies/contracts/quotations/
birds/rodents/insects/more...

t: 01954 230708

m: 07836 245670

w: www.drepestcontrol.co.uk

e: info@drepestcontrol.co.uk



19, WALLMANS LANE
CAMBRIDGE
CB24 4QY

Swavesey & District History Society

September meeting. More than 50 attended the first talk of the 2022/23 season when Selwyn gave a report, with contemporary b&w photographs, on the dramatic floods around Swavesey and Over in spring 1947. WWII had come to an end just over 18 months earlier and the country was still desperately short of food when the sequence of events unfolded:-

- Thursday 23 January. The temperature dropped to well below freezing, it started to snow and carried on snowing for just over 6 weeks.
- Monday 10 March. A rapid thaw set in and the quickly increasing volume of water came roaring down the Great Ouse.
- Wednesday 12 March. At the Great Ouse River Board HQ in Ely, they knew what was coming so they arranged many teams of men to fill thousands of sacks with clay and load them onto lorries, ready.
- Friday 14 March. Fenland farmers started 3 days of frantically moving their livestock, livestock feed, machinery, furniture, valuables and pets to higher ground.
- Sunday 16 March. In violent storm force conditions around 50 men worked all day along the local bank, filling sacks with soil from the fields below and dragging them up the steep slope to stop several threatened breaches but the water level kept rising. By 9 p.m. they were very wet, very muddy, extremely cold, totally exhausted and it was clear they couldn't possibly win. Just before midnight, at a serious breach opposite Bluntisham, a torrent of water thundered through the darkness down into Over fen.
- Monday 24 March. Royal Engineers used 16 Neptune tracked amphibious military vehicles to form a wall across the breach on the river side. They set up a miniature railway along the bank and transported thousands of bags of clay soil from Earith Bridge to the breach. Over 1,000 soldiers were involved over 3 days and nights.
- Friday 28 March. During the week 260 massive pumps and more than 100 firemen from across the country, who volunteered to man them, had arrived in the area.
- Sunday 30 March. The Duke and Duchess of Gloucester arrived at Bluntisham railway station to visit the site of the breach and view the destruction across 12,500 acres of flooded, top quality agricultural land.
- Most of the water had been removed from the fens by the end of May and the farmers managed to grow moderately good crop yields that year.

October meeting. Speaking to 35 members, archivist Gill Shapland from Bar Hill delivered "Did he do it?", an account of the trial of John Bonham of nearby Sutton in 1636, the records of which are held in the university library. During local gravel extraction a child's bones were found and the only child anyone could remember

going lost in recent years was John's son, also called John, 9 years earlier. Preliminary evidence was given over a two-month period from many Sutton witnesses and the witness statements of ten were dramatically read out by members of the audience. Meanwhile John Snr. was held in Ely prison. He was clearly unpopular in the village and he seems to have treated his children harshly and he had put little effort into finding his son after he originally disappeared. Then there was the ancient burial urn found beside the bones which was similar to a pot which was known to have been in John's house in the past. But the thigh bones seemed longer than expected from what was remembered of the 12 year old boy. The commendable detailed, forensic and fair nature of the statements was notable. The Assize Court was held in Peterborough on 12 December 1636. After heated discussion the consensus of opinion of History Society members present was that the case was not proven. But what was the judgment of the Assize Court and what became of John Snr? If you really would like to know, the reporter is susceptible to bribery.

Next meetings:-

- 17 January. The picture postcard: an eyewitness of history. Mark Pardoe.
- 21 February. George Brewster: the last climbing boy. Joanna Hudson.
- 21 March. From blacksmith to dental surgeon. Mike Muncaster.

Selwyn's diabolical puzzle on book titles. Part 5.

Each clue below leads to the title of a well-known book. All the books come under the category of fiction, so do not look for Roget's Thesaurus or A Brief History of Time etc. General knowledge, a mildly cryptic approach and Google™ should provide most of the answers.

Former chemical company received praise all over America (1, 8)

With a little over two grand, somehow copes with easy days (4, 1, 5, 7)

Would four of them make lovely couples? (4)

Careless apprentice, no longer in charge (5, 3)

She - in distress - believed the soft slurs (4, 2, 3, 11)

Mark a line on a rugby pitch (5-2)

Donkey loses nothing after short month (4, 4)

Birds on a circuitous course (8, 6)

Where undersea trials are conducted? (8, 6)

He - hurting terribly - broke gym equipment (9, 7)

[You will find the answers to this puzzle on page 19.](#)

MISCELLANY

Swavesey 100 Years ago (Dec 1922 & Jan 1923)

From the Cambridge Chronicle

SCHOOL CLOSED. 8th Dec. 1922

The National School has been closed since Monday in consequence of illness amongst the children.

WHIST DRIVE. 8th Dec. 1922

For the benefit of the War Memorial Hall Fund, a whist drive took place at the National School on the 30th ult. Thirteen tables were in play, and the prizes were won by the following:- Ladies, Mrs. H. Holmes, Miss Loades, Miss M. Parsons; gentlemen, Mr. D Say, Mr. E. Loades, Mr. R. Seekings. Mr. George Goad was M.C. Owing to the closure of the School (through illness), the Entertainment Sub-Committee have decided to suspend the series of whist drives until further notice.

ADVERTS. 15th Dec. 1922

CHRISTMAS CHEER. – Toys, Games, Useful Presents for ladies and gentlemen, in variety. Shop early. – H. S. Aldred, London House, Swavesey.

GIVE us a look this Christmas-tide for Useful Presents before shopping elsewhere. Something to suit everyone. – Prior's Stores, Swavesey.

VISIT Canham's Stores for your many needs during the next few days and you will be amply satisfied both with the price and quality. Don't forget Cretona, Ginger, Raisin and Orange Wine.

CHRISTMAS SHOW. 15th Dec. 1922

111 passengers were booked to St. Ives from Swavesey station on Monday, the special attraction being the Christmas Fat Stock Show.

BOYS' FOOTBALL. 15th Dec. 1922

Having worn out their football, the boys of the National School have collected nearly £1 from their friends in the village and have bought a new one with etceteras. A small balance remains in hand, and will be used for repairs, etc.

WAR MEMORIAL HALL. 29th Dec. 1922

The tender for the erection of the War Memorial Hall, submitted by Mr. Canham, of Somersham, has been accepted, and work will be commenced immediately.

SALVATION ARMY. 22nd Dec. 1922

The Willingham Salvation Army Band perambulated the village on Monday night, playing Christmas and other well-known hymns, including "Lead, kindly light," and "Nearer, my God, to Thee". Their visit was much appreciated.

POSTAL ARRANGEMENTS. 22nd Dec. 1922

The following are postal arrangements in Swavesey at Christmas: Sunday, 24th December, one delivery of letters and parcels, no collection; Christmas Day, one delivery of letters and parcels, collection from the sub-post-office at 10 a.m.; Boxing Day, no delivery, no collection.

A BAD ROAD. 22nd Dec. 1922

In conversation after the Parish Council meeting on Tuesday evening a farmer caused consternation amongst the Councillors by observing that if something was not soon done to the Hale-road, he would bring no more milk into the village. After a pause, he added, "It will be butter." The Hale-road is under the control of the District Council.

POSTAL ALTERATIONS. 29th Dec. 1922

The announcement in last Friday's "Independent Press," contained in a report of a meeting of the West Cambs. Fruit Growers' Association, that early in the New Year the latest time for posting for the night mail despatch from Swavesey Post Office would be altered from 7.15 p.m. to 6.30 p.m., caused much consternation and indignation in the village. It is felt that Swavesey has not been fairly dealt with, as the change is apparently being made without reference to the Parish Council or any other local representative body. In pre-war days letters could be posted for night mail despatch until 7.40 or 7.45 p.m., half an hour later than the present time, and an hour and a quarter later than the future time, and early in the war the third delivery of letters, etc., was suspended, and has not been restored. The proposed commencement of the first morning post delivery at 7 a.m. (the pre-war time) meets with general approval.

WAR MEMORIAL HALL. 12th Jan. 1923

The work of digging trenches for the foundations of the War Memorial Hall was commenced on Monday.

ADVERTS. 19th Jan. 1923

FOR SALE. – A Good Tumbrel Cart, with copes and ladder, £8; Large Garden Roll, £3; Two Weighing Machines and Weights; Two Tons of Second-hand Scantlings, about 12ft. long, cheap; 15 tons of Good Sweet Mixed Chaff. – All at Prior's Stores.

CHURCH REPAIR FUND. 26th Jan. 1923

The scaffolding used in connection with the repair of the roof of the parish church with other surplus building material was sold by auction on the 18th inst. by Mr. Cyril Watts, of St. Ives, and with the sum of £4 17s. 6d. received for galvanised iron sheets previously disposed of, realised £46 19s. After deducting expenses (printing, bill-posting, advertising, etc.) £1 16s., the net amount realised by the sale was £45 3s., which will more than meet the deficit in the Church Repair Fund accounts. Mr. Watts kindly made no charge for his services.

Chris Richardson

It Will Probably Be Cloudy...

A guide to the night sky over Swavesey during December and January.

So, the Artemis 1 mission with Shaun the Sheep on board still hasn't launched at the time of writing with a new launch date of 14th November. The DART mission in September appears to have successfully changed the orbit of a small asteroid by colliding with it so we will not have to rely on sending Bruce Willis in to space to save us all!

On 7th December 2022, it will be the 50th anniversary of the launch of Apollo 17, the sixth and final mission to actually touch down on the moon.



Conveniently, that evening will also be the night of the Cold Moon, the full moon of December, so you can even try and take a look for where the lander arrived only a few days later. A valley, known as Taurus-Littrow from the names of the mountains and crater found nearby, it is found on the south-eastern edge of the Sea of Serenity, to the top right of the Moon's surface when viewed from the northern hemisphere of the Earth).

Speaking of human exploration, Mars is our next big hope after we head back to the Moon this decade.

While people landing on Mars may be some way away yet, that doesn't stop us from enjoying the view from here on Earth. On 8th December, Mars will reach opposition, when it will be closest and brightest in our sky. As a bonus, because it is occurring in the winter, it will be high above the horizon, making it an excellent target for binoculars or a small telescope, though the unaided eye will have no trouble spotting it either.

And don't worry if you miss it on the day: Mars will be a big and bright for a month or so either side of this time, so there are plenty of chances to see it for yourself.

The Geminids meteor shower is active between 4th and 20th December and will peak on the night of 14th December. With the highest average rate of the year, around 120 meteors per hour, this is one to watch out for!

The winter solstice, the shortest day of the year in the northern hemisphere, occurs on 21st December.

Also on 21st December, the planet Mercury reaches greatest eastern elongation from the Sun. This is a good time to view Mercury as the planet appears at its farthest distance from the Sun in the evening sky. Look for the planet low in the western sky just after sunset.

The Ursids meteor shower is active annually between December 17 and December 24 and peaks on the night of 22nd December with around 10 meteors per hour.

The first major meteor shower of 2022, the Quadrantids are usually active between the end of December and the second week of January, and peak around January 3-4. Unlike other meteor showers that tend to stay at their peak for about two days, the peak period of the Quadrantids only lasts a few hours with around 40 meteors per hour. Unfortunately, the full moon will block out the fainter meteors.

The first Full Moon of the year on 6th January is known as Wolf Moon in many northern cultures, named after the howling of hungry wolves lamenting the scarcity of food in midwinter. Other names for this month's full moon include old moon and ice moon.

On 30th January, the planet Mercury reaches greatest western elongation from the Sun. It will be at its highest point above the horizon in the morning sky. Look for the planet low in the eastern sky just before sunrise.

Still bright in the night sky is the planet Jupiter. Jupiter is the largest planet in the solar system and is about 318 times the mass of Earth, and around 1320 times the volume. Jupiter is made mostly of hydrogen and helium, similar to the Sun, and is known as a gas giant. Jupiter can easily be enjoyed with the naked eye. A reasonably good pair of binoculars will reveal the planet's four large moons discovered by Galileo in 1610.

Chris & Helen Nunn

Feet of Endurance

How smart is your right foot? Try this.

While sitting in a chair, lift your right foot off the floor and make clockwise circles.

Next, while doing this, draw the number "6" in the air with your right hand. Your foot will change direction.

I told you so and there is absolutely nothing you can do about it. We all know how ridiculous it is but before the day is done you are going to try it again - If you have not already done so.

Visit our truly stunning display gardens ...



Probably the largest display centre in the UK, selling directly to trade and the general public

Bannold are one of the UK's largest independent suppliers of natural hard landscaping materials. We stock natural products sourced directly from the UK and around the world enabling Bannold to offer premium products at the most competitive rates to trade and the general public.

- Natural Paving • Setts and Paviours • Stone Walling
- Decorative Gravels • Rockery • Boulders • Waterfeatures
- Topsoils • Soil Improvers • Bark Mulches • Sands
- Hardcore and Cements



Capability Barns
Huntingdon Road
Fen Drayton
Cambridge CB24 4SD

Freephone: 0500 012231
or 01954 231666

Opening Times:
Mon-Fri 07.30 till 5.00
Saturdays 09.00 till 1.00

www.bannold.co.uk



SWAVESEY LIBRARY

is your local voluntary run community library.



Wanted

Donations of good quality, recent adult fiction books and children's books for ages 1 to 15 would be most welcome.

Swavesey Library is a voluntary run library whose only source of books to loan is from books given to the library. Your donations will help us to refresh our stock of books for loan. If unsuitable, they would be sold on our second-hand book shelves, with monies raised being used to support the library. If you have books you would like to donate, please drop them round to the library or call Doug or Richard on the numbers below.

We are open:-

**Tuesday afternoons 3.30pm -5.30pm,
Wednesday evenings 5pm – 7pm and
Saturday mornings 10 – 12 noon.**

Swavesey library can be found in the Old Entrance Hall, Swavesey Village College. It's entrance is at the righthand side of the Gibraltar Lane car park. Just follow the library signs.

For further information;-

see our web site www.swavesey.org.uk/village-links/swavesey-library,

Facebook at Swavesey Village Life or contact

Richard at Richard94.hart@virgin.net / 01954 202707 or

Doug at Doughuntuk@yahoo.co.uk / 01954 232478.

Will Wright Memories

Back in the 50's & 60's, long before the days of "education, education, education", all school children, with the exception of those already being educated at private schools, underwent an "11 plus" examination which was used to allocate pupils to grammar schools, secondary modern schools & village colleges. 1959 was apparently one of the best ever year's results at the local primary with, I believe, 8 of our year's pupils passing and going on to the grammar schools in Cambridge & a further 2 or 3 passing to access further education at Impington Village College. Maybe the fact that the Swavesey College had opened effectively created less pressure on all concerned. I was lucky enough to get a place at the boys County, now Hills Road 6th form school. After getting the results, all of us who had passed were taken out of our classes and put in a separate back room of the original building and given the task of selecting & working on a project of our choice for the last few weeks of the term, overseen by the then headmaster "Buck" Jones. Bobby Mitham & myself had decided to write about the recent British Antarctic expeditions and managed to obtain quite a lot of information from the offices of the Antarctic exploration unit based in Cambridge.

So it was soon time for my dear old Mum to take me to Cambridge one day and get me kitted out with a school uniform as the County High was very strict about all pupils being properly dressed on the way to & from school. Needless to say the clothing was only available from one outlet in the city and comprised dark blue jacket & a cap, both with the school badge & logo, similarly ties with badge prints on them. If we were wearing dark shorts, which most of the lads did for the first couple of years, we even had to have specific long grey wool socks which had a couple of blue ring lines just below the knees - what I soon became aware of was that if any lad was spotted either on the way to or from the school without cap or tie in place, the penalty was having to report for a dress parade at 8:45 am before the general daily school assembly for a week!

We travelled to Cambridge on the train which, needless to say, was always rather busy at the "school run" times. The morning train left Swavesey a couple of minutes after 8:00 am and was almost always in Cambridge station by 08:30 - a bit quicker than the guided bus these days but I guess that's what they call progress!

I was fairly lucky in that there were 2 other lads, Nicky Alsop & Tim Parish, who were already at the County and quickly showed me the ropes. We were given a free season ticket which was valid from the first to the last day of term & which included half term break periods and week-ends as well! There was never enough room in the official station waiting room for everybody, so most of us lads used to gather in the bike storage unit, which was located roughly where the entrance to the MG Owners club is now, and was at the end of the platform so we did have a bit of shelter even if it wasn't heated nor totally weatherproof.

All the lads who went to the "Boys Central", which had recently been re-located to Queen Edith's Way, along with the pupils at the Girls County on Long Rd., also had a seasonal bus pass for the second part of their journey but our school on Hills road was deemed to be close enough to walk it, so we used to make our way through the goods/marshalling yards and come out just by Hills Road bridge so all we had to do was cross the bridge & access the school a 100 yards down the road.

LANGLEY & Co. Accountants

**Are you paying too much tax?
Are you claiming all your business expenses?
Do you need help with your accounting and taxation affairs?**

We provide a complete range of accounting and taxation services including:

- ◆ Accounts preparation for sole traders, partnerships and small businesses including limited companies
 - ◆ Self assessment preparation and online filing
 - ◆ Bookkeeping including payroll, CIS and VAT
- ◆ Taxation advice
- ◆ Business start-ups
- ◆ Business planning
- ◆ Pension reviews

For a friendly and competitively priced service from local accountants please contact
Doug Langley at:

Unit C1, 2 Station Road, Swavesey, CB24 4QJ
Tel: 01954 231249 Email:doug@langleyaccountants.co.uk

Answers to The Editor's diabolical book titles puzzle on page 11

Former chemical company received praise all over America (1, 8)	I, Claudius
With a little over two grand, somehow copes with easy days (4, 1, 5, 7)	2001: A Space Odyssey
Would four of them make lovely couples? (4)	Emma
Careless apprentice, no longer in charge (5, 3)	Peter Pan
She - in distress - believed the soft slurs (4, 2, 3, 11)	Tess of the D'Urbervilles
Mark a line on a rugby pitch (5-2)	Catch-22
Donkey loses nothing after short month (4, 4)	Jane Eyre
Birds on a circuitous course (8, 6)	Robinson Crusoe
Where undersea trials are conducted? (8, 6)	Treasure Island
He - hurting terribly - broke gym equipment (9, 7)	Wuthering Heights

A Glance at the Past in December and January From the Cambridge Chronicle

1798, 20 Jan. Dwelling house to let. Immediately or at Lady Day next, a convenient house fit for a small family, with good cellars, a coach house, stable & other conveniences at Swavesey. Enquire the Printers.

1804, 1 Dec. Thomas Cole, Sale of Farm. Auction Sale by Lots at the White Horse of farm in the occupation of Thos. Cole. Farmhouse, barns, stables, outbuildings and a Close of Pasture adjoining also a Close of Pasture called Hale Close, & 5 Halfyardlands lying in the Common Fields with Rights of Commons in Meadows & Fens.

1820, 28 Jan. John Harvey of Swavesey aged 65 died.

1830, 14 Jan. Insolvent Hayfactor. HM, formerly of Swavesey & late of Cambridge examined by the Court concerning whether he had been allowed out of the Town Gaol (Debtors). He said he was allowed into the garden because of his health.

1831, 14 Jan. Townsends Land. Freehold & Copyhold estate for Auction. Farming Buildings with Home Close of old pasture called Townsends. 2 sets of Commons & sundry parcels of land in Open Fields. Arable land containing 34 acres.

1843, 14 Jan. Highway Robbery. On Tuesday evening last about 5 o'clock a robbery was committed upon a boy of the name of John Capps, an apprentice of Mr Heiffer, tailor of Swavesey.

1849, 8 Dec. The Reading Society. On Friday evening the 30th Nov, a meeting was held in the National School to celebrate the opening of the Swavesey Young Men's Reading Society. Now instead of having a knot of idle lads assembled at every corner, ready for every kind of mischief, insulting the passer-by, and a pest to all the well-disposed inhabitants, you may well see upwards of 50 of them assembled every evening in the spacious, convenient and comfortable schoolroom, anxious to be instructed.

1850, 21 Dec. Smuggling Case. A Writ of Extent having been issued by the Crown against WC, maltster of Swavesey, for arrears of duty, an inquiry was held at the Red Lion hotel, Cambridge. It appears that Mr C is indebted to the sum of £104-3-3d for malt duty and the inquiry was to ascertain the value of his lands, goods, chattels and personal property which might be seized to liquidate the debt. Mr C was now in the Castle.

1854, 7 Jan. Drainage Meeting. At the meeting held last Thursday at the White Horse Mr Mann of Fenstanton explained that the object was to find the cause and suggest a remedy for the imperfect drainage. He directed their attention to the grown up state of the river Ouse, considering it to be the principle evil.

1854, 21 Jan. Singular Death. Last Wednesday an inquest was held upon Mrs SP aged seventy. She had been complaining of her head and worrying about her daughter who was ill. Her granddaughter who slept in the same room said she had locked up the front and back doors before retiring. Next morning, she found the back door open and her grandmother missing. A search was made and the body found in a field at the back of the house, in a shallow pool of water not covering her face. Verdict, died of exhaustion and exposure to the cold.

1859, 15 Jan. School Treat. The annual treat given by Mrs Ryder came off on Tuesday last when upwards of 200 sat down to the customary Christmas fare of roast beef & plum pudding seasoned with plentiful supplies of Mr Wickham's ale. Speech by Mr Harris. Mr & Mrs Gory organised the meal. Number of scholars had doubled in less than six months.



An update from Fen Drayton Lakes

Work is underway here at RSPB Fen Drayton Lakes on a new family trail to open in the spring. The route will take in several different habitats whilst being less than a mile long; perfect for seeing a little bit of what the reserve as a whole has to offer. Leaving the car park through the gate at the end, the trail will go north through our sandy area of 'early successional grassland', through the small wood and out into the floodplain meadow along the river before looping back with views over Drayton Lake and Hoylwell reedbed.

You may have already heard that we are looking to improve our visitor facilities over the next few years. These improvements, of which the new trail is a part, have been in the planning stages for a long time so we are pleased to say that real progress is now being made.

The first stages of this project involve providing more facilities for visitors to enhance your experience, such as repairing and improving tracks and surfaces, creating wild play features for children and families, opening new trails and providing much needed permanent toilet facilities helping everyone to enjoy their visit even more. We hope these improvements will benefit all our visitors and that you will support us in this next important step for the reserve.

To help fund these improvements, we will shortly be introducing a £2 car park fee for non-members of RSPB visiting Fen Drayton Lakes. Further details will be posted on our reserve blog post in due course at www.rspb.org.uk/fen-drayton-lakes. RSPB members and Blue Badge holders do not need to pay. This small car parking fee will also help us ensure we are maintaining facilities to a high standard for our visitors' comfort and safety. As a charity, we need to maximise opportunities to raise income wherever possible to financially support our charitable purpose of conserving wildlife and habitats.

Visit rspb.org.uk/fendraytonlakes

The Royal Society for the Protection of Birds (RSPB) is a registered charity: England and Wales no. 207076, Scotland no. SC037654



Area of Holywell north of the car park that our new family trail will traverse

Winter is always busy on the reserve with many birds from northern Europe spending the winter with us. At this time of year, you may be able to spot fieldfares, bullfinches, woodpeckers, herons, great crested grebes and hundreds of over-wintering waterbirds such as goldeneyes and teal. We hope you'll come and see us soon.

If you would like to join the 1.2 million RSPB members to help protect wildlife and the special places it lives, or would like to find out more about membership, please take a look on our website at:-

www.rspb.org.uk/join-and-donate/join-us/

Wednesday Wander

If you are interested in finding out more about the wildlife you can find here, as well as the work we are doing to create and maintain valuable habitats, why not join one of our monthly 'Wednesday Wander' guided walks? These volunteer-led walks take place once a month, usually on the second Wednesday, stopping to take in the seasonal highlights. To see details and book, please visit:

www.events.rspb.org.uk/fendraytonlakes

Email: fendraytonlakes@rspb.org.uk

Phone: 01954 233260



MAGGIE'S

**Welcome to Maggie's
Cambridge**

Everyone's home of cancer care

What is Maggie's? Maggie's provides practical and emotional support to those with cancer, their family, friends and carers. The centre is a warm and welcoming place, with qualified cancer support specialists offering an evidence-based free programme of support which complements medical treatment.

Practical support includes information about eating well, coping with hair loss, or empowering visitors with information about their cancer treatment and benefits entitlements. Or visitors can talk to our psychologists and counsellors, explore their creative side through Art Therapy or get help to manage stress.

Then there is our kitchen table which is at the heart of our centre; a place where visitors can sit and chat with others in a similar situation, or maybe just take some quiet time with a cup of tea.

Examples of support can be anything from Art Therapy to Yoga, Men's Support Group to Menopause workshop, Living with Prostate Cancer to Brain Tumour Support Group. In addition, a cancer support specialist is always available for a chat and to listen. They will always meet a new visitor, help them decide what support best suits their needs and make the appropriate referrals. Read more about our offering on:-

<https://www.maggies.org/>

Primarily we are a 'drop in' centre, Monday to Friday, 9am-5pm. Drop in anytime, but we are also happy to answer any questions prior to a visit on 01223 249220.

Maggie's, 21 Milton House, Puddicombe Way, Cambridge, CB2 0AD

Email: Cambridge@maggiescentres.org

Facebook: @maggiescentrescams

Twitter: @maggiescams

Instagram: maggiescambridge

SWAVESEY SURGERY Fund raising

We are looking to raise funds to automate the entrance door to the surgery.

An automated door will help with accessibility for many patients; including wheelchair users, those with pushchairs and those with walking aids.

From second hand book sales and patient donations we have already raised £2,901.35

Target - £8,100

Thank you for any support you are able to offer to help us to reach our goal.

Doctors Surgeries

Swavesey Surgery

(01954) 230202

Out of hours 111

Website:- www.swavesey surgery.nhs.uk

Information & updates on facebook page

Over Surgery

(01954) 231550

Out of hours 111

Website:- www.oversurgery.nhs.uk

Information & updates on facebook page

Longstanton

(01954) 207600

Out of hours 111

Website:-

www.willinghammedicalpractice.nhs.uk

See our website at www.swaveseymeridian.org.uk
for the full and latest surgery newsletters. Ed

Bar Hill Surgery

(01954) 780442

Out of hours (01954) 780442 -
call will automatically be diverted

Website:- www.mhmaple.co.uk/

Fenstanton

7E High Street, Fenstanton

01480 461873

Out of hours 111

Website:-

www.riverportmedicalpractice.co.uk



SWAVESEY COMMUNITY WARDEN SCHEME



Hi, I am Tracey, the Age UK Cambridgeshire and Peterborough (Age UK CAP) Community Warden in Swavesey.

My role is to support older people to remain living at home safely and independently as well as accessing the local community. The scheme is varied in how I can support people, and no one day is ever the same.

One example of how I can assist is ensuring you are receiving all relevant benefits, access to grants, advice on how to reduce energy costs etc. – all vital within this current cost of living crisis.

If you would like to know more about the scheme and how I could help you, I would love to have a chat with you, so please give me a call on **07436102736**, I look forward to hearing from you.

President: Dr S G P Webster MA, MD, FRCP

Chairman: Hazel Williams MBE

Vice Chairman: Clive Adkin

Hon. Treasurer: David E Bruch FCA

Chief Executive: Melanie Wicklen

Age UK Cambridgeshire and Peterborough is a charitable incorporated organisation registered with the Charity Commission for England and Wales with registered charity no. 1165856

Registered Office: 2 Victoria Street, Chatteris, Cambridgeshire, PE16 6AP.

FDS

(CAMBRIDGE) LTD

01353 779754

fdssales@outlook.com

www.fds.cambridgetd.co.uk



GRAB/TIPPER HIRE



AGGREGATE SUPPLIES



PLANT HIRE

PRIVATE AND TRADE WELCOME

SOILS – SANDS – GRAVELS – SLEEPERS
HARDCORE – DIGGERS – DUMPERS
DOZERS - FORKLIFTS

CALL US ON 01351 779754 or 07921 777550



FDS Cambridge LTD



fds_grabhire

SCHOOLS INFORMATION

Swavesey Primary School Early Years and Playwork Centre Wraparound Care and Early Years Provision - Mon to Fri - term-time

Registration Fee £15 per family for using Breakfast and/or After School Club

Breakfast Club 7.30 am - 8.55 am

3+ year olds to Year 6 children: £6 per child per session

After School Club 3.15 pm to 6.00 pm

For Reception to Year 6 children: £12 per child, family rate £11 per child

Early Years 9.00 am to 3.00 pm (full day) or morning (9-12/1) or afternoon (12-3)

For 2½ year olds to 4 year olds

Places for funded children up to 30 hours per week

Charged sessions:-

3+ year olds £15 half-day and £30 full-day.

2 years and 6 months £17 AM only

£5 for lunch hour (12-1)

For more information and to register:-

<https://www.swavesey.cambs.sch.uk/page/?title=EY+%26amp%3B+P&pid=59>



9.30 am – 10.15 am
Music Theory classes for ALL

10.15 am – 11.00 am
Little Rockets for 3-9 yrs
Join the Band & Find your voice!

11:00 am – 12:00 pm
The BIG Rock School for
Drummers, vocalists or guitarists
with some experience or have
been playing for some time aged
10 yrs+

10.15 am – 11:00 am
The BIG Sing!
(aka Choir/Sing up – 7 – 77yrs! ALL AGES)

11am – 12pm
The BIG Orchestra!
An opportunity for children,
parents, adults & community in
an orchestra together.
Everyone welcome... beginners
to experienced players!

Swavesey Music School

admin@swaveseymusic.co.uk
Swavesey Village College CB24 4RS

Swavesey Playtimers

9:45 - 11:15 every Friday (including the holidays).

In the Memorial Hall

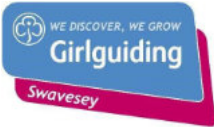
We will begin with free play followed by a snack and then finish with Sharon from Parafunalia clap and sing who will lead some singing and movement.

All children under 5 welcome to these term-time toddler groups. Find out what is going on from our Facebook group - "Swavesey playgroups".
A great chance to meet local parents.



BALLET CLASSES

Ballet classes at Over Primary School
Thursdays
During term time
Qualified teacher with enhanced DBS,
Chaperone Licence and Prevent.
Age 4 to 18
Details:
www.abmschoolofdance.co.uk
LOCAL FRIENDLY FUN.
Also in Histon, Cottenham and Girton.



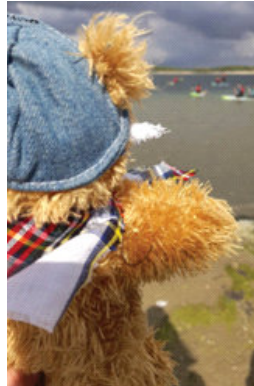
Rainbows, Brownies, Guides and Rangers.

We need a unit helper or assistant leader at 1st Swavesey Guides

www.girlguiding.org.uk/get-involved/become-a-volunteer/ways-of-volunteering/

Swavesey Guides and Rangers Activity Weekend

On the second weekend in September, seven Guides and five Rangers (plus the Rangers bear) attended the annual County Activity Camp at Grafham Water, joining with Bar Hill Guides to form a subcamp. When they arrived on Friday evening, they helped with pitching tents before completing the wide game activity as the sun set. Hot dogs and hot chocolate were consumed and then everyone went to bed (and most of the girls even slept!)



Saturday dawned bright and early - as the girls got ready for a full day of activities, the leaders cooked bacon for breakfast. There were four activity periods throughout the day so the girls were busy doing bushcraft, climbing/high ropes, getting soaked in water activities, doing archery, and generally having a good time! After dinner (pesto pasta or chicken and chorizo paella), there was a campfire run by some of the volunteers so everyone put on their camp blankets and took their chairs to sit by the fire. Singing (and some dancing) required a snack before bed so we had some hot chocolate and a biscuit before going to bed.

Everyone had to wake up earlier on Sunday morning as they had to pack everything before having breakfast. It was a grey morning but the girls were still smiling. After a hearty breakfast of eggy bread and beans, the girls disappeared off to their Sunday activities and the leaders started packing everything away and striking camp. Lunch was eaten quickly between activities and final packing was done during the final activity. After showers (if needed), the girls carried their bags to the car park and it was time to go home.

We were lucky with the weather as it didn't rain, even though it usually does. Although everyone was exhausted by the end, it was a wonderful weekend enjoyed by all.

Swavesey Brownies Slept under the Wings

The last Cambs East County event for the year involved 17 of the Swavesey Brownies joining up with 500 other Brownies from the County at the Imperial War Museum at Duxford on 16 October. We were part of the purple group, Great Ouse Division. After putting our belongings under the planes in the Aircraft airspace hangar, we started our activities. The Great Ouse group started by making paper aeroplanes and flying them along the mini runways in the Conservation Hangar. Then, we decorated mugs with a flying theme. Next was a wonderful storyteller from English Heritage, who told us about some of the first female aviators, including Harriet Quimby and Amy Johnson.



We were off again, to visit the test Concorde and an Avro York that had been part of the Berlin Airlift. The Great Ouse Brownies then laid out their bedding rolls under the wings of an Avro Vulcan, a BAC TSR-2 and a Westland Lysander Mark II before enjoying hot chocolate and some singing in the Conservation Hangar.

Lights out was a little later than planned, but the Brownies settled relatively quickly and the aircraft hangar was quiet. Next morning, at 6:30am, the lights were all turned on to cheering and Brownies were up, dressed and packed ready for their morning of activities. After breakfast, we made articulated card space women, a peg biplane and a galaxy in a jar. After a visit to the shop, we were free to explore the museum. Swavesey Brownies voted to visit the Land Warfare display and the American Air Museum. We had a picnic lunch outside in the sunshine and watched aircraft taking off and landing. It was an amazing experience for us all.

Rainbows and Brownies are full with waiting lists, sign your daughters up early for Rainbows, don't wait until she is 5 and her friends have started!
www.girlguiding.org.uk/joinus

Quality Bespoke Secure Storage

Space for all your storage needs

Easy to open & fast to access. High security with PIN codes, HD CCTV cameras & individual room alarms. Choose as little or as much space as you really need, for any length of stay, with no long term commitment. Clean, dry, ventilated & condensation free. Friendly & helpful service with packaging available. Open to customers everyday from 7am to 9pm. Viewings arranged by appointment.



• Home • Document • Commercial

Located at Manor Farm, Graveley, PE19 6PH. Mention SMM22 to receive £5 discount on your first month of storage room rental.



www.morespacestorage.co.uk

Call 01480 830130



1st Swavesey Scout Group

In early October, although it was quite cold at night, the cubs and scouts had a wonderful time camping at Skreens Park in Essex. They did a huge array of different activities including Air Rifles, Paddleboarding and Raft Building. On the Saturday of the camp the Beavers came along and joined in the fun for the day.



As it was our first camp since the pandemic began, the camp was vital in helping some of the Scouts and Cubs to finally complete their Outdoors Challenge badges. These badges require the Scouts and Cubs to do activities that can only be done when camping. These include:

- Campsite hygiene
- Looking after the campsite
- Countryside code
- Taking part in a campfire and singing

By completing this challenge badge along with other challenge badges helps the Scouts and Cubs gain their Chief Scout's Gold Award (Scouts) and Silver Award (Cubs). It is with great honour that I can announce that Will Norton, Maise Burling, Daniel Corbett and Jamie Martin have been awarded their Gold Award. Douglas Parker, Amber Hayden-Garner, Alyn Bentley, and Florian Eccleston have all been awarded their Silver Award.

As a Scout group we use the various Challenge Awards to help guide us in what we plan during our weekly sessions. Our aim is to give all of our young people from the Beavers to the Scouts a chance to gain the Chief Scout's awards relevant to their section.

After the camp, the Cubs and Scouts hiked to Fenstanton and visited the chip shop. The scouts then hiked back. We made very good time and everyone did very well.

In October the Scouts tried their hand at tie dying tote bags. A messy activity but all the scouts had a great time. The bag in the photo is Claudia's. (see *opposite page*)

In the middle of November, the cubs met the Mayor and Mayoress of Cambridge at the Guildhall. The meeting went very well. The cubs got a



Claudia's bag

chance to quiz the Mayor on what their job involves and to get up close to the chain that he and his Lady wife wear. We also visited some of the council chambers in the Guildhall and learned some of the history of the Cambridge Mayors.

During the autumn the Beavers have done a whole collection of activities including playing a wide game. Wide games are played over a large area and usually require lots of moving around.

Finally, from January Scouts is moving to a Wednesday evening. The 7pm start time is still the same just a change in the evening. Cubs meet on Tuesday at 6.15pm and Beavers at 6pm on Thursday.

Beavers (ages 6-8) elizabeth.bush@1stswaveseyscoutgroup.org.uk

Cubs (ages 8-10½) steven.wilson@1stswaveseyscoutgroup.org.uk

Scouts (ages 10½ -14) marian.bentley@1stswaveseyscoutgroup.org.uk



**BECOME A
TUTOR!**

Tutors needed: All subjects and ages
Tutor Doctor Cambridge
01223 430432
www.tutordocor.co.uk/cambridge

CHIROPODIST/ PODIATRIST

I can offer a professional service
in your own home.

For further details please ring
01954 201256

Biomechanical assessments &
orthotic therapy also available.

Michelle Dolan
HCPC Registered Chiropodist/Podiatrist
CH34864

e-mail: michelledolan@outlook.com

HOCKEYS

ESTABLISHED 1885



Thinking of a move? We are happy to offer you a free, no obligation valuation of your property.



Call our Cambridge office for a free valuation
(01223) 356054

Call our Willingham office for a free valuation
(01954) 260940



REED KITCHENS & BATHROOMS

DESIGN TO INSTALLATION
THE COMPLETE SERVICE

We are a local established company since 1994 that manufactures a range of top quality kitchens and offers them direct to you, at an upfront price that includes everything from design to full installation. It also includes your choice of top range appliances from the likes of NEFF and Bosch.

Makeover your kitchen using our door and worktop replacement service.

Call for a free Brochure



KITCHENS

BATHROOMS

BEDROOMS

Tel: 01954 232899 Mobile: 07711 696015

For more details visit: www.kitchenscambridge.com
email: glenn@kitchenscambridge.com



Why am I being given this flyer?



Because it's currently against the law to ride an e-scooter on a public road or pavement.

We understand that buying an e-scooter can be tempting, especially as you can get them from many popular retailers.

What happens if I've been stopped by Police?

The Police will advise you of the current law about how to use an e-scooter legally and ask you to take your e-scooter home. They may however still penalise you depending on the nature and gravity of the offence.

However, the current law is clear

You can buy one but you can't ride it on a UK public road, cycle lane or pavement. The only place an e-scooter can be used is on private land.

Why is this?

E-scooters are classified as Personal Light Electric Vehicles (PLEVs), so they are treated as motor vehicles and subject to the same legal requirements.

All details can be found on the following Government website: <https://www.gov.uk/government/publications/powerd-transporters/information-sheet-guidance-on-powered-transporters>

We understand the public's support for environmentally friendly modes of transport. We want to work with the public to make sure the roads are safe for everyone.

The UK Government is currently taking part in 'Future Transport Zone' trials for e-scooter hire, with a view to making them legal to use on the roads.

Check out the gov.uk website or enquire with your local authority for a trial closest to you.

The Parish Council has received correspondence about e-scooters being ridden on pavements around the village and of near misses with pedestrians.

All details of where e-scooters can be used can be found on the Government website:

www.gov.uk

search for powered transporters

SWAVESEY PARISH

Parish Council News September/October 2022

County Council Highways:

The Traffic Regulation Order for work on the LHI project for speed reduction & signage on Fen Drayton Rd is proceeding. Work is likely to take place in the New Year. Unfortunately there will need to be a full road closure.

The PC has questioned a number of the recent road closures, asking for partial closures with lights, unfortunately with narrow roads and work in the centre of the road, this has not been possible.

A number of drainage gully tops at the road-side edge in various areas of the village were stolen in October. Many of you would have seen the bollards to prevent any serious vehicular damage or worse. They are being replaced with new hinged gully covers which also require a special tool to release the cover, which will hopefully prevent further thefts in the future. Hopefully all this should be completed by the time you read this edition.

The PC held early discussions on what to put forward as our Parish LHI bid for next year as applications open soon & have to be in by January 6th. The imposition of 20mph zones in villages is more than likely to become a new funding application scheme early in the New Year so this cannot be submitted via the existing scheme.

The constant issue of cycle thefts & (lack of) security by the Busway was discussed, but we do not seem to be able to come up with an answer at present, as even IF any officer has the time to view any recorded footage, on the basis of any thief wearing a hoodie or balaclava neither the Police nor, and specifically, the CPS will take no further action. Oh the glory - NOT - of free legal aid!

Hopefully by the time you read this, the water connection will have been made to the 2 new Frere cottages and also on Middle Watch opposite the entrance to Cygnus Court. Both of these works will have required complete road closures with the accompanying diversion chaos.

District Council:

The District Council will be trialling a 4-day working week for all its office-based staff at Cambourne. So if you think it has often been difficult to speak to an officer let's see what difference this will make!

The recent SCDC development liaison meeting raised quite a few issues but at least we are able to highlight issues of local knowledge with the developers, building contractors, Council officers and planners being present, albeit on screen.

Trinity Estates - the management company for the Folly Road development is being chased regarding outstanding grounds maintenance including the hedge cutting along Fen Drayton Rd boundary.

Planning:

There have been a number of applications recently, most of which have gone without comment, however the proposed re-development of 63 Middle Watch raised a few issues and comments. It must be said that there are no objections to the re-development in principle, particularly as retirement flats are in demand, however the proposal is in contravention of the village design guide in that it is proposed to be a 3-storey building. Also the proposed "winter garden rooms" would overlook the

COUNCIL NEWS

neighbouring rear gardens. The PC supported comments & concerns from local residents, copied to them. The PC also requested that should consent be granted a condition be included that all deliveries & parking of construction vehicles must be maintained within the site boundary.

Discussions are ongoing regarding the location & gated entrance of the agricultural access to the land between the Folly Rd development & the Village College.

Permission has been granted for a new access & pond to the Community Orchard.

Drainage:

Telemetry software for the control of the surface water from the attenuation ponds on the Folly Rd site and the forthcoming Bushmead Homes site, has now been approved for installation at the EA's Webb's Hole sluice and should be in place by 4th November.

The Bushmead development has had the brakes put on it until a solution can be found to solve the surface water drainage at the Middle Watch end of the site, as Anglian Water have quite rightly now refused to feed this surface water into the foul sewers. It beggars belief that we discussed this with them 3 or 4 years ago, A possible answer would be to feed this water into a pumping station which would then take it back to their main drainage system & balancing pond at the top end of the site. Ground maintenance work has been ordered to ensure the site is prepared for winter, including necessary ditch clearing work.

The PC agreed with the IDB & Neighbourhood Plan group that any future large developments within the Parish should be conditioned to have a 4-week attenuation period on the balancing ponds within the site.

Finance:

The PC approved a Community Grant application for new flooring and improvements to the Squash Club courts.

The Bethel church is organising the Christmas Carols in Market St. on December 17th, having arranged a road closure for the event. The PC has supported the event with a Community Grant Fund to finance the Road Traffic Management for the road closure.

Village projects & maintenance:

The joint project with the Village College for the new artificial turf sports pitch has now started and should be completed in early in the New Year.

40 tons of sand/soil loam was spread across the Recreation Green to counter the cracks opening & the sinking of drainage channels.

The PC is arranging for various tree maintenance work in the Parish over this autumn/winter.

It has been agreed to plant a new tree to commemorate both the Platinum Jubilee and reign of Queen Elizabeth II on the central mound at Constable's Rood.

Fews Lane Consortium again attended the meetings to thank the PC for its support for the forthcoming judicial review of both Northstowe 3a & 3b decisions Gtr Cambridge Planning.

Swavesey Parish Council Website www.swavesey.org.uk		
Parish Councillors	Telephone (01954)	E-mail address
Martin Johnston (Chairman)	200605	mjohnston@swavesey.org.uk
Doug Hunt (Vice-Chairman)	232478	dhunt@swavesey.org.uk
James Dodson	230560	jdodson@swavesey.org.uk
Colin Parsons	230861	cparsons@swavesey.org.uk
Sandie Smith	232356	ssmith@swavesey.org.uk
Warren Wright	203172	wwright@swavesey.org.uk
Jonathan Kerley	231304	jkerley@swavesey.org.uk
Rachel Vollerthun	07312 102526	rvollerthun@swavesey.org.uk
Alex Widger	07949 228580	awidger@swavesey.org.uk
Sue Rogers		srogers@swavesey.org.uk
Mandy Smith	230248	msmith@swavesey.org.uk
Clerk: Linda Miller	202982	clerk@swavesey.org.uk
District Councillor: Sue Ellington	202923	cldr.ellington@scambs.gov.uk
County Councillor: Mandy Smith Papworth & Swavesey Ward	230248	mandy.smith@cambridgeshire.gov.uk
Memorial Hall Administrator: Nicole Mullee	07963 861791	memorialhall@swavesey.org.uk

Swavesey Parish Council meets on the 2nd Thursday of each month for Planning items and on the 4th Monday of each month for Full Council.

All meetings are held in the Memorial Hall at 7.30pm. There is always a 10 minute public forum at the start of the meeting.






300007

The Complete Gas Heating and Plumbing Company

Plumbing • Heating • Gas
Bathrooms • Water Softeners
Property Maintenance

Tel: 01954 204044 • Web: www.entiregroup.co.uk
Email: service@entiregroup.co.uk



OH LÀ LÀ!

YOU DON'T SPEAK FRENCH ?!

Come and joins us!
Learn or improve your French from only
£20/hour !

With who?

Certified, experienced and passionate native French teacher (PGCE, Former DELF examiner-DELF certified)

For who?

Adults, teenagers and children, all levels welcome

For what?

French lessons tailored to your needs
(General French, Business French, Exam preparation such as GCSE, IGCSE, A Level, IB, DELF, TCF, TEF...)

Where?

*Online private classes
*Face-to-face small group classes at Northstowe



Contact: abcfrench@outlook.com
Website: www.learnfrenchabc.com

Pretend to know French wine by pronouncing
Sauvignon blanc correctly!
Language is about connection, not perfection

From Your DC - Sue Ellington

Happy Christmas everybody, and a Happy and Peaceful New Year. 2022 seems to have been very turbulent both nationally and internationally and I pray that 2023 may see things settling down so that we can concentrate our efforts to fighting climate change issues. As I have said many times - I believe strongly in supporting my local community and was very proud to be presented with the St Etheldreda Award from the Bishop of Ely in recognition of my services to the community. This award is presented by the Bishop to twenty nominated people every two years at a formal service in the Cathedral in front of family and friends; quite overwhelming.

The Greater Cambridge Partnership (made up of the leaders of the County and District Councillors) are currently out to consultation for the congestion charging programme for Cambridge. I believe there are significant details which need to be addressed such as how this will apply to Blue Badge holders, the community car service, the tradespeople and the delivery operators. I fear for the sustainability of the shops in the city but the effects on commuters, unless the bus service is radically revised, will be significant. I agree that there is considerable congestion in Cambridge but I would like to see the detail of this proposal.

South Cambs District Council are working hard to support the Homes for Ukraine programme. There is a lot of information on their website especially the "Welcome Pack". In addition to the initial monthly payments the District has decided to make an additional 'opt-in' payment of £150 per month to cover extra energy and other costs.

The Council are currently working to move towards a 4 day week to start in the new year. It will be interesting to see the implications. I do hope it will improve recruitment particularly in planning and development.

There are currently two vacant district councillor seats at Longstanton, Oakington and Northstowe following the resignation of the elected members. The election will be held on November 3rd which will be interesting in these turbulent times. As I reported previously the community facilities in Northstowe were due to be supported by £12 million from South Cambs but the proposal has hit a significant problem and cannot now be delivered in the agreed form. Work is progressing to modify the proposals.

I am pleased that the advice day in October was well attended but I suspect there were people who were unable to attend or who have further questions they would like answered. If I can help please get in contact - cllr.Ellington@scams.gov.uk or 07774146331 or 01954 202923 .

Congratulations to District Councillor for Swavesey Cllr Sue Ellington, who received the Etheldreda Medal Award.

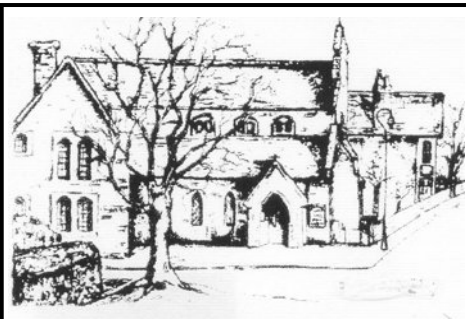


Every other year, the Bishop of Ely awards The Etheldreda Medal to people across the Diocese whose service to the community is both 'generous' and 'outstanding'.

The citation for Sue:-

Sue Ellington has served her community in various practical ways over many years. She is a long-serving member of South Cambridgeshire District Council but her ceaseless support for community events goes way beyond her duties as a Councillor. She bakes cakes, arranges flowers, provides transport, and supports the elderly, disabled and housebound. Sue has even had time, somehow, to be a Churchwarden and Treasurer. She possesses a true heart of gold.

Extract from the Church of England Ely Diocese website:-
<https://www.elydiocese.org/etheldreda-medal-award-2022--citations.php>



SACRED HEART OF JESUS
Roman-Catholic Parish
 19 Needingworth Road, St Ives, Cambs. PE27 5JT

Parish Priest: Rev Thomas J Walton

Tel: 01480 462 192
 www.sacredheart-stives.org.uk
 email: office@sacredheart-stives.org.uk

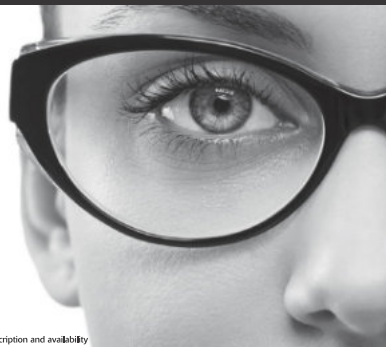
Mass Times:
 Saturday 17.00 (Anticipatory)
 Sunday 08.00 and 11.00

Paying too much for your glasses?

Save Money - Buy Direct!

Visit our factory shop to see our fabulous range of Discount Prescription Eyewear

- Hundreds of frames to choose from, including designer frames from Ray-Ban, Polo Ralph Lauren, Oakley, PRADA, Ted Baker and Versace
- Specialists in high and complex prescriptions
- Same-day or next-day service available*
- Save up to 75%
- Huge range of designer sunglasses
- Full range of sports eyewear



Official stockists

*subject to prescription and availability



We are open 9am to 5pm Monday to Friday, and 9am to 1pm Saturday



Call us **01954 231545** Visit our website **www.all-eyes.co.uk**
 20 Norman Way Industrial Park, Over, Cambridge CB24 5QE

Your choice

A farmer hired a man to work for him. He told him his first task would be to paint the barn and said it should take him about three days to complete. But the hired man was finished in one day. The farmer set him to cutting wood, telling him it would require about 4 days. The hired man finished in a day and a half, the farmer was amazed. The next task was to sort out a large pile of potatoes. He was to arrange them into three piles: seed potatoes, food for the pigs, and potatoes that were good enough to sell. The farmer said it was a small job and shouldn't take long at all. At the end of the day the farmer came back and found the hired man had barely started. "What's the matter here," the farmer asked. "Well" said the man, "I can work hard, but I can't make decisions!"

Life is like that isn't it? Decisions for this, decisions for that, always it seems someone somewhere wants a decision for one reason or another. Seasons of the year and important dates approach more decisions, and some we regret for a while. We promise ourselves always to do better, but we know that means more decisions!

Most of us, if we are honest just want a life that is hassle free, a job that stretches us, but not too much; an income to pay the bills and a little bit extra for that 'financial freedom.' Well we can all live in hope of that! Chances of winning the lottery are not even worth mentioning and the politicians' promise it with one hand and take it away with the other.

The sort of life decisions we need to make, it seems to me, are those that makes no promise to take away the hassle, but place us in a position where we can gain perspective.

Eleanor Roosevelt once said: 'One's philosophy is not best expressed in words. It is expressed in the choices one makes. In the long run, we shape our lives and we shape ourselves. The process never ends until we die. And the choices we make are ultimately our responsibility.'

Sometimes talking things over before that decision is made helps to find good direction. I am always willing to be a listening ear.

Pastor Bob Adams Bethel Baptist Church.

Mb: 07590 921125

e: pastorbob@bethelbaptistchurch.org.uk



Sunday Service

We meet together every week for our Sunday Service at 10.45am. We would love to welcome you to come and join us!

Club Vintage - Wednesdays 2-4pm



Club Vintage is designed to support older people and extends a special welcome to those with dementia and their carers. There is a small £3 weekly charge. Each week, members enjoy a rotating variety of activities such as chair-based exercise, singing, bible-based crafts, quizzes, games and entertainment from others.

LITTLE LIGHTS - Fridays 10am-12pm

All are welcome, bumps, babies, toddlers, parents and carers. There is no pressure, drop in at anytime for as long as you need. Only £2 per family, which includes cake and coffee for grown ups and drinks and a snack for the little ones! There are optional craft activities and singing as well. We hope you can come along and join us!



The Hub - Fridays 7-9pm



Our Friday night youth club is back! Open to all secondary aged children. Come along and meet up with friends, chat, play games, listen to music and much more! Snack bar also available. Parents must complete a permission form.

CONTACT US

Pastor Bob- pastorbob@bethelbaptistchurch.org.uk

Sue Hope (Secretary) - secretary@bethelbaptistchurch.org.uk

Marianne Holt (Youthworker) - marianne@bethelbaptistchurch.org.uk

www.bethelbaptistchurch.org.uk

www.facebook.co.uk/SwaveseyBethel



DATES TO REMEMBER

A Messy Advent

Christmas crafts & family meal

Saturday 10th December - 4-6pm at Bethel

Little Lights' Christmas Party

Friday 16th December - 10am-12pm at Bethel

Swavesey's Village Carols

Saturday 17th December - 5.30pm on Market Square

Carols by Candlelight

Sunday 18th December - 7pm at Bethel

Interactive Virtual Nativity & Dress-up

19th - 23rd December - 5-7pm every night at Bethel

Christmas Day

Saturday 25th December - 10.45am at Bethel

Club Vintage New Year Meal

4th January - Time TBC at Bethel

(email: clubvintage@bethelbaptistchurch.org.uk)

Tel: 07821 720470)

Check our facebook page for more details nearer the events!





The Parish Church of St Andrew

Services at St Andrew's

We hold a service at St Andrew's every Sunday at 11am. For the first three Sundays of the month, this is a celebration of Holy Communion but on the fourth Sunday, we have a Morning Praise service which is less formal. When there is a fifth Sunday, we take part in a 5Folds benefice service at one of our benefice churches.

On the first Thursday of each month at 8pm, we have fifteen minutes of silence and prayer remembering the people of Ukraine followed by Compline (a short-sung service of night prayer). By tradition, people then leave in silence. -

We would love to welcome you to any of our services.

Prayer Table

The Lady Chapel is always a quiet place to sit and think or to pray. You will find a prayer table there with prayer resources for you to use and where you can leave a message requesting prayer for yourself, a loved one or a difficult situation. It is confidential and you can choose whether or not to leave your name.

If at any time, you feel that you would like to talk to one of our ministers, please ring either Rev'd Lucy Cleland (Team Vicar): 01954 277758 or Rev'd Simon Gill (Team Rector): 01954 230434.

The church is open daily between 9am and 4pm (or dusk, whichever is earlier).

"What I did in Lockdown" October 8th

Who would have thought that so many people were so busy in so many different ways during Lockdown! The church was packed with wonderful things created during those difficult times and with the results of new skills learnt and old skills polished. Many of you visited us to wonder at the beautiful quilts, the hand-woven rugs, and the colourful knitted and crocheted items, not to mention the inspiring paintings and pastels. The Guiding units in Swavesey shared what they had achieved in Lockdown and the Swavesey Together group's display reminded us how quickly and efficiently they had organised themselves to help anyone in need in the village. We even had some poetry and an academic paper for people to read.

Thank you to all of you who were brave enough to share your work with us all and thank you to all our visitors who came to look at the exhibition on that lovely sunny afternoon.

The Parish Church of St Andrew

Upcoming Services and Events



Sunday, December 11th 3pm (Doors open at 2:30pm)

**This is my Theatre presents
The Nutcracker and the Mouse-King**

"It is nearly Christmas and Maria and her brother Frederick can hardly wait to tear open their presents. But an early gift from their Godfather of a beautiful, wooden Nutcracker soldier to Maria was hardly what she had expected. Little does Maria know that this small wooden figure was once a real child, not much older than herself, turned to wood for daring to cross the evil Mouse-King. But just before midnight, when the magic of Christmas is strongest, Maria's beloved Nutcracker comes to life in order to march into battle and fulfil a deadly mission!

Can Maria help the Nutcracker to defeat the horrid Mouse-King and break the curse once and for all?

The "This is My Theatre" group have visited St Andrew's before, bringing us "Alice in Wonderland", "The Wind in the Willows" and "The Christmas Carol". They are dedicated to presenting plays in churches, country house gardens and other challenging spaces. Their shows have always been enjoyed by our Swavesey audiences.

Tickets £12.50, under 16s £8.00 available online from This is my Theatre: www.thisismytheatre.com/nutcracker-tickets

Or locally from: Nicky Carne: 01954 230971: nicky_carne@hotmail.com or Jacqui Fuller: 01954 230774: jacqui_fuller@hotmail.com

Christmas Events and Services:	
Sunday, 27 th November: 4.30pm:	Christingle Service with collection for The Children's Society
Saturday, December 10 th :	Community Carol Concert
Sunday, December 11 th : 3pm:	This is my Theatre Group presents "The Nutcracker and the Mouse-King"
Saturday, December 17 th :	Carols on Market Square
Sunday, December 18 th :	4:30pm: Carol Service
Saturday, December 24 th : 11:30pm:	Midnight Communion

If you have any queries about church services or about our events, please contact the churchwardens:

Nicky Carne: 01954 230971: nicky_carne@hotmail.com

Jacqui Fuller: 01954 230774: jacqui_fuller@hotmail.com

Community Groups & Charities

Swavesey Neighbourhood Plan Steering Group	A voluntary group who meet on the first Monday each month to set out the vision for Swavesey and the planning policies needed to manage development according to the wishes of the local community. See http://www.swavesey.org.uk/neighbourhood-plan/ or Email: clerk@swavesey.org.uk for more information
Cam Sight	Cam Sight is a local charity which offers support to anyone with a visual impairment, along with their family and carers. We meet on the 4th Wednesday afternoon of each month in Bar Hill. For more information please telephone Joan in Bar Hill on 01954 200622 or Alison at Cam Sight on 01223 420033 or email alison@camsight.org.uk . For more info see:- www.camsight.org.uk
Cambridgeshire Hearing Help	CHH is a charity that helps people with hearing loss. Volunteers service NHS hearing aids and provide batteries and they attend Swavesey quarterly at Thistle Green. Advice on any aspects of hearing loss is available at a hearing help session or by calling the office on 01223 416141, e-mail enquiries@cambridgeshirehearinghelp.org.uk or check the website cambridgeshirehearinghelp.org.uk
Care Network	Care Network supports volunteers, encourages independence and develops good neighbour projects. We provide the Welcome Home from Hospital service across Cambridgeshire. Contact:- Care Network, 5 Broadway House, 149-151 St Neots Rd, Hardwick, Cambridge, CB23 7QJ (tel: 01954 211919). care-network.org.uk/
Community First Responder Scheme	The local group in Over and Swavesey has provided help over many hours and attended over 20 patients in your community. You can support the group and help to fundraise for equipment or volunteer to become a Community First Responder within your community. Contact:- responderadmin@eastamb.nhs.uk or call 01284 731802
Swavesey Library	A volunteer run community library based in Swavesey Village College. We are able to providing a full range of library facilities being directly linked to the Cambridgeshire County Council library service. For more info see:- www.swavesey.org.uk/village-link/swavesey-library
The Friends of the Rosie Hospital	The Friends of the Rosie Hospital are helping to make the Rosie a more comfortable environment for mothers and babies. Contact:- Mrs Mary Sanders (Hon Chair) rosieinstitches@ukonline.co.uk Tel 01223 356615
East Anglia's Children's Hospice (EACH)	Put your free time to good use and volunteer at East Anglia's Children's Hospice (EACH) in Milton. Volunteering at a children's hospice doesn't always mean care work and fundraising as there are also tasks such as admin and maintenance of the grounds. Contact:- Clare Bates on 01223 815134, email clare.bates@each.org.uk
OWLS Community Car Scheme	Run by DBS checked volunteers the scheme offers a door-to-door service, for medical or some social journeys, to people who are unable to access other forms of transport. Ring 07505 254363 to book a journey, find out more, or to volunteer as a driver

CLUB INFORMATION

Army Cadet Force	Swavesey Detachment, No 2 (Cromwell) Company, Cambridgeshire Army Cadet Force meets each Tuesday evening at the Swavesey Village College from 7 pm. New recruits are welcomed from ages 12 years (year 8) to 18 years. Contact - Sgt Phill Barrett phone 07786981380		
Swavesey Girlguiding	Unit	Evening	Contact
	1st Swavesey Rainbows	Thursdays	caroline@overroad.co.uk
	1st Swavesey Brownies	Mondays	swaveseybrownies@outlook.com
	1st Swavesey Guides	Thursdays	swaveseyguides@gmail.com
1st Swavesey Rangers	Thursdays	swaveseyrangers@gmail.com	
Swavesey Spartans	Swavesey Spartans are a Chartered Standard Youth Football Club affiliated to Cambridgeshire Football Association. The club runs boys and girls teams from under 6 through to under 17. For information and enquiries please contact Chairperson - Mr Darren Bucknall 07872 681167 Secretary - Mr Simon Dawson 07886 215205 Club Welfare Officer - Carolyn Merricks on 01954 204972		
1 st Swavesey Scout Group	All sections meet at the Scout Hut on the SVC site Cubs Day: Tuesday: 18.00 to 19.15 Contact: Steven Wilson - Cub Leader Email: steven.wilson@1stswaveseyscoutgroup.org.uk Scouts Day: Monday. Time: 19.00 to 20.30 Contact: Jim Burling - Group Scout Leader Email: jim.burling@1stswaveseyscoutgroup.org.uk For any other enquiries Email: info@1stswaveseyscoutgroup.org.uk		
Swavesey Early Years and Playwork Centre	Swavesey Early Years and Playwork Centre are based in their own purpose-built unit on the primary school site. It comprises Early Years children (aged from 2 years and 6 Months) between 9am and 3pm (formerly Swavesey Pre School) and we provide activities and care for primary school aged children before and after school. Breakfast Club runs from 7.30 am to 9am and After School Club from 3.15pm to 6pm. For information please contact Carol Panther (Early Years and Playwork Manager) by email: eyandp@swavesey.cambs.sch.uk or by phone 01954 273312 Ext 2 or 07803 812221.		
Swavesey Music School	Meets every Saturday of term time at Swavesey Village College. For further details see: www.swaveseymusic.co.uk/		
Swavesey Community Choir	If you enjoy singing and having fun then come and join Swavesey Community Choir. We meet every Wednesday in term time in St Andrews Church, from 7.30pm - 9pm. You don't need to be able to read music and no auditions needed, tenor and bass voices particularly welcome. For further details contact Julie Holmes julieholmes78@gmail.com Website: www.swaveseycommunitychoir.co.uk		

Health and Wellbeing Club	A club for older adults which runs on the last Tuesday of the month with the exception of December. The group meets at the Community Centre, Thistle Green, Swavesey from 10.00 to 11.30am. Refreshments, chair-based exercises, speakers and time for conversation. No booking is required and the group is Free.
British Tang Soo Do Institute	British Tang Soo Do Institute practices the Korean martial art of Tang Soo Do. Our club training covers self defence techniques and many aspects of fitness including flexibility, coordination, conditioning, balance and discipline helping to promote a healthy lifestyle. For further information please contact Master Jeff Cockram on 07863 345681 or jeff@btsdi.co.uk or see our website: www.btsdi.com
Swavesey Tang Soo Do Club	Swavesey Tang Soo Do have classes on a Monday and Wednesday in the primary school main hall. Beginners and junior grades are 6pm-7pm and senior grades 7pm-8:15pm. The contact details are Mr and Mrs Morton 07919 050261 and enquiries@swaveseytsd.co.uk . The website is www.swaveseytsd.co.uk
Allotments in Swavesey	Down Hale Road towards the windmill and on the right there are 61 plots, mostly 150 sq yds (125 m2) in area, backed up by eight water tanks. Large yields of a wide range of high quality vegetable, fruit and flower crops can be grown successfully. If you are interested in joining the waiting list contact Val Sage Tel 01954 230853
British Legion	For information contact:- Secretary - Angela Dye. 01954 277453. email: dyeangela0@gmail.com
Swavesey Badminton Club	Located at the Swavesey Village College Sports Centre. The Club offers a high standard of play at club nights on Tuesdays 7pm to 8pm and on Fridays from 6.30pm to 9.30pm. We play competitive badminton in the Cambridge leagues and run men's, women's and mixed teams. Contact Helen Taylor on 01954 230997 Email: enquiries@swaveseybadminton.net website: www.swaveseybadminton.net
Swavesey Billiards and Snooker Club	For information/membership please contact Graeme Waites (01954 230113) Email graham.waites566@btinternet.com
Swavesey Camera Club	At Swavesey Camera Club we are proud to cater for photographers of all standards. For more information visit our website at www.swaveseycameraclub.co.uk . We meet every Thursday, 7.30 - 9.30pm, Lecture Room, SVC. Non-members welcome - £4 charge (first visit free). For further details please ring Simon Shore 01954 230848
Swavesey Squash Club	Swavesey Squash Club has three international standard squash courts, in our recently refurbished clubhouse, on the Swavesey Village College site. The club has a number of weekly sessions running, suitable for beginners, improvers, and more advanced players. Unlimited use of the facility from £17 a month. A welcoming and active community club with social events and opportunities for competition. Visit our website for more details or contact Ali Loke on 07776 176866/ ali@alilokesquash.com . www.swaveseysquash.com
Swavesey & Over Cycling Club	We meet regularly throughout the year, with rides most weekends and also weekdays on spring and summer evenings. As a Cycling UK affiliated club our goal is to explore a joint passion for cycling in a safe, inclusive and social way. We aim to organise events throughout the year from day & weekend rides in the UK and long weekend trips in Europe. Contact: John Craven Email: socccommittee@gmail.com Facebook: https://bit.ly/3GJcksZ SOCC or Website: https://swaveseyovercc.wixsite.com/socc

Over Netball Club	We train on a Tuesday night 7pm till 8.30pm on the outdoor courts at Swavesey Village College. Small friendly club, play in CDNL local league, beginners/ everyone welcome. Cost £3 per session. Contact is Lucy Parsons lucyparsons801@gmail.com . We train at Northstowe Secondary Academy on Tuesdays 7-8:30pm
Compass Cafe	Meets every Thursday morning from 10.30 until 12.00 at Bethel Baptist Church. Contact Sue Ellington on 01954 202923 or sue.ellington@virgin.net
Swavesey District Bridleway Association	A liaison group representing local horse riders whose main aim is to protect existing and create safe new horse riding links between all local villages. New members welcome. Regular Newsletter/Social events calendar. Please contact Sue Rogers (01954) 232758
Swavesey & District History Society	Meet every third Tuesday in the month, 7.30pm, Global Resources Centre, SVC. Contact Carolyn Redmayne, Secretary (01954) 230037
Swavesey Institute Football Club	New players always welcome, please contact: Phil Baines on 01954 200377 [Saturday sides] or Jerry Ladell on (01954) 201018 [Veterans side].
Linedance	Linedance classes held on Wednesday mornings at the Bethel Baptist Church 9-30 to 11-30 am. Beginners always welcome. Contact Deborah Walker 01954231382 Email: deborahwalker105@talktalk.net
Swavesey & Over Conservation Society	Meet at Bethel Baptist Church, Middlewatch, Swavesey CB24 4RP commencing at 7.30pm on the 2 nd Wednesday of the month unless otherwise stated. If you need a lift: PHONE: Trevor Grange - 01954 230119 or Pat Miles - 01954 780485. Guests Are Always Welcome!
Swavesey & Over Tennis Club	Club night 1 October to 1 April is on Monday, 7.00 to 9.00pm. From 1 April - 30 September there will be club nights on both Mondays and Wednesdays. We welcome new members from anywhere in the locality. Further information from s.taylor996@btinternet.com https://swaveseyovertennis.wixsite.com/sotc
Swavesey RADSoc	Friendly local drama group staging two or three productions a year. New members always welcome. Contact: Nathalie Balzano: nathaliewoodward@hotmail.com Visit our website at www.swaveseyradsoc.org.uk
Swavesey Speakers	Develop your public speaking skills at this Toastmasters International club. Guests welcome! 1 st & 3 rd Tuesday of every month at the Memorial Hall from 7pm to 9pm (occasional venue change). More details: www.swaveseyspeakers.toastmastersclubs.org or call/text Faye on 07908 443610.
Swavesey W.I.	We meet every second Monday of the month at 7.30pm in the Memorial Hall. New members are always welcome to enjoy a variety of invited speakers and have a chat and cup of tea/coffee afterwards. For further information contact Margaret Guest tel (01954)202757
Women's Walking	Women's Walking on Mondays and Fridays at 10:00AM. Meet on Market Street green. Walk for approximately one hour on pathways in and around Swavesey. A chance to exercise and chat. Reasonably robust footwear recommended. All welcome. Clare Fox 01954 202882

THE MERIDIAN ADVERTISER December/January

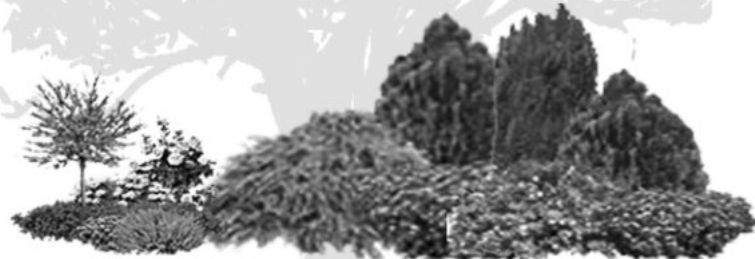
Landscaping & Garden Services

Grower & Supplier of Trees, Shrubs & Hedges



- ✘ Supply and or planting of trees, shrubs and hedges
- ✘ Cutting / Pruning of trees, shrubs and hedges.
- ✘ Land Preparation, spraying, lawn seeding and turfing
- ✘ General maintenance, clearance and repairs
- ✘ Fencing, Gates and Paving

For a FREE estimate phone :- 07786699977
or 01954 770306
or visit www.eparish-landscaping.co.uk
or Email : edwin@parishnet.co.uk



■ ■ ■ ■ **Sue Allen**
Bespoke Framing

- Photos, prints, oil paintings cross-stitch, mirrors & glass replacement
- Garments including football shirts, christening gowns and first shoes
- Large selection of frame styles
- Memorabilia and baby hand casting
- Based in Over



For all enquiries
please contact Sue
on **01954 203272** or
(m) **07779 528 408**

Sueallenframing@gmail.com
Sueallenframing.co.uk

ALEX ARTHURS BUILDING SERVICES

ALL ASPECTS OF BRICKWORK UNDERTAKEN

EXTENSIONS • TRADITIONAL BRICKWORK • ALTERATIONS
GARDEN WALLS • CHIMNEY REBUILDING • REPOINTING
FIREPLACES • STONE SILLS AND THRESHOLDS

PAVING • SLABS & NATURAL STONE • BLOCK PAVING
CONCRETING • GROUNDWORKS • FENCING • DECKING

FOR A FREE QUOTATION & ADVICE CALL ALEX ARTHURS

01954 232050 or 07841 433652



wilderspin
GARAGE LTD

A local family-run business

**MOTOR
HOME SERVICING -
MOT'S & HABITATION CHECKS
ALL DONE ON SITE**



SERVICING & REPAIRS

EXHAUSTS | BATTERIES | TYRES | CLUTCHES | BRAKES | TIMING BELTS

M.O.T. TESTING CENTRE

CLASSES 4,5 & 7 | MOTOR HOMES | MINI BUSES
CARS | VANS | LIGHT COMMERCIAL

FREE

USE OF
COURTESY CARS

FREE

WINTER
HEALTH CHECK

FREE

COLLECTION AND
DELIVERY SERVICE

OAKTREE ROAD | FEN DRAYTON | CB24 4SS
Tel: 01954 230273 | Email: service@wilderspins.net
www.wilderspin-garage.co.uk



Willingham Auctions Café
Serving food & drinks 7 days a week
Open 9am to 5pm (4pm Sundays)



Serving a selection of cakes, coffees, fresh Lakenham Creamery ice creams and a variety of breakfasts and lunches with Gluten Free and Vegetarian Options.

Thursday to Saturday Evenings we also have Lot 25 Bar, serving a large range of drinks including cocktails over the weekend with food trucks also available every Friday and Saturday evening for your enjoyment.

Find us at 25 High Street, Willingham and enjoy our inside and outside dining areas.

We also have regular event nights,
please see our on-site posters for more information.

We are also dog and child friendly please feel free to bring the entire family.

web: www.willinghamauctionscafe.com
email: hello@willinghamauctionscafe.com

tel: 01954 261252

Do you need a chiropodist? Are you sure?



As a fully qualified foot health practitioner
I am trained in the following:

- Diabetic foot health care
 - Toenail cutting
 - Corn and callous removal
 - Bunion relief
 - Minor wound dressing
- And the treatment of many other foot health problems.

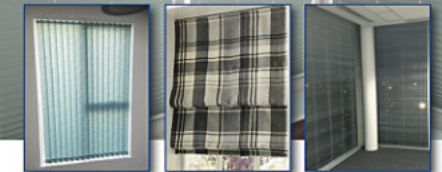
All in the comfort of your own home.

Tracy Griffiths
Foot Health Practitioner

Call today to make an appointment
Telephone: 07840 636883
Email: tracy.griffiths@hotmail.com

C & BLINDS
C

Specialists in Blinds | Any size | Any colour



Vertical Blinds • Roller Blinds
Venetian Blinds • Repairs • Roman • Pleated
Perfect Fit • Wooden • Roof Blinds
Awnings • Fitting Service
Free Estimates & 1 Year Guarantee

10% OFF
With this leaflet

Tel: 01223 211 171 • Mob: 07761 262070
Email: colincoleman64@hotmail.com

A.M.S GROUP

Paving & Landscapes Division

Friendly, reliable, family run business
based in Swavesey

All aspects of landscaping and
garden maintenance from fencing, gates,
turfing, patios and artificial grass to Groundworks.

We always take pride in our work and always ensure
that our clients are 100% happy

Please contact us for a free no-obligation quote today
E: amsgroup76@hotmail.com - T: 07741 908344
www.amsgrouppavingandlandscapes.co.uk

Driveways (Tarmac, block pave, resin)
Patios - Fencing - Turfing - Pathways

Digger & Driver Hire Available

Fully insured in public liability

Proud to Sponsor Swavesey Spartans U15s



BOOK NOW FOR OUR CHRISTMAS MENU

POP IN OR VISIT OUR WEBSITE FOR
OUR CHRISTMAS MENU



THE WHITE HORSE INN
1 MARKET STREET, SWAVESY,
CAMBS, CB24 4QG

BOOKING IS ESSENTIAL
CONTACT US NOW TO BOOK YOUR TABLE
P: 01954 231665

W: WWW.WHITEHORSESWAVESY.CO.UK
E: CONTACT@WHITEHORSE.CO.UK





Want to bring your outdoor living ideas to life?

Push your driveway, garden & outdoor living area to its full potential with iScape Landscaping

- Paving & Driveways
- Decking & Fencing
- Water Features
- Hard Landscaping
- Turfing & Lawn Care
- Path & Patios

01954 202 232 | 07738 255 003
 dan@iscapelandscapingcambbs.co.uk
 iscapelandscapingcambbs.co.uk



Ash Croft Veterinary Surgery

169 St. Neots Road,
 Hardwick, Cambridge CB23 7QJ
 Mon.-Fri. 8.30am - 10.30am
 4.30pm - 7.00pm
 Saturday 9.00am - 11.00am
 Sunday 10.00am - 11.00am
 Tel: 01954 210250

Unit 1 Pendrill Court, Ermine Street North
 Papworth Everard, Cambridge CB23 3UY
 Monday, Wednesday, Friday 11.30am - 1.30pm
 Saturday 12noon - 1.30pm
 Tel: 01480 831615

Laura Wood MA, VetMB, MRCVS
 Simon Shore MA, VETMB, MRCVS
 Dragan Tomovic BVSc, MRCVS
 Consultations by appointment only



Andy Tibbett & Sons Painting & Decorating



- * All internal & external work carried out to a high standard
- * Trade references can be supplied
- * Very competitive pricing
- * A prompt & polite service from a name you can trust



Telephone: 01954 230810

Mobile: 07717 493723

Email: andrewtibbett@hotmail.co.uk

BA Building Services

EXPERIENCED LOCAL BUILDER

For all your building requirements

- o All aspects of Brickwork
- o Extensions
- o Patios, Block Paving, Fencing
- o Conservatories
- o Porches, Doors & Windows
- o Tiling
- o Bathroom & Kitchens

ALL ENQUIRIES WELCOME

TEL 01954 232 241

MOBILE 07952 339 227

G B Builders

NO JOB TOO SMALL

FOR ALL MAINTENANCE RENOVATIONS
AND DIY WORK

All general building repairs & odd jobs
Specialist in Painting & Decorating
Groundwork & Grass cutting

- Fencing
- Brickwork & Plastering
- Plumbing
- Driveways, Paths, Patios
- Carpentry
- Slabbing
- Roofing
- Concreting
- Tiling
- Blockpaving
- Drainage
- Guttering

Call Today
07877 742420
Or 01480 437511
g.builders@yahoo.co.uk



**Chartered
Physiotherapist**
Susannah Jennings BSc (Hons)
MCSP, HCPC, MAACP



Musculo-Skeletal Injuries:

- Back & Neck Pain
- Muscle & Joint Pain
- Rehabilitation after Surgery
- Postural Conditions (including Post & Ante Natal)
- Mobility Difficulties

Treatments Available:

- Joint Mobilisation & Manipulation
- Soft Tissue Massage and Stretching
- Acupuncture
- Mobility Assessments
- Electrotherapy
- 1:1 Clinical Pilates
- Rehabilitation Programs

31 Thistle Green, Swavesey, Cambridge. CB24 4RJ.
Tel: 07970 548205

Email: susie@swaveseyphysio.co.uk
Web: www.swaveseyphysio.co.uk

F.W. COOK FUNERAL SERVICE

49 Church Street Willingham

Tel Willingham 260325

Andrew Cook Dip FD Kay Cook Dip FD MBIE

A long established family business providing a personal 24 hour service

Golden Charter pre-payment funeral plans available

COOK'S MEMORIALS

New memorials and refurbishments
Brochures available on request



XBOX & PlayStation Repairs

Phone Repairs inc. Screens

Nintendo Switch Repairs

Games Console Refurbishments

Phone, Laptop & PC Refurbishments

Sales Repairs Refurbishments Servicing



A. R. CATER

Carpentry & Joinery

Established 1984



- KITCHENS •
- WARDROBES •
- CUPBOARDS •
- SECURITY LOCKS SUPPLIED & FITTED •
- COVINGS FITTED •
- UPVC FASCIAS, SOFFITS & GUTTERING •
- TILING TO KITCHENS & BATHROOMS •
- GENERAL PROPERTY MAINTENANCE •

*CALL TODAY FOR A
"FREE ESTIMATE"*

01954 - 232069

OR

MOBILE 07778 307578

M.B. FLACK

Interior & Exterior

Painter & Decorator
& Repairs

30+ Years Experience
in the trade.

Free Estimates

Telephone

01954 231 915

La` Mac

Hairdressing for all
the family



- ♦ Friendly Service
- ♦ Traditional & up to date styling
- ♦ Fully trained in all colouring techniques
- ♦ Open Tuesday - Saturday
(late 7.00pm Wednesday)

We aim to make your visit as pleasant as possible, with a professional and friendly atmosphere to help you relax.

If you are thinking of a change please pop in - we will be pleased to help.

☎ 01954 231 445

2a Market Street Swavesey
Cambridgeshire CB24 4QG



DDB Home Solutions Limited

Making your house a home

We are a company based in Needingworth specialising in kitchen and bathroom installations and can also supply the following services;

- Carpentry and Joinery
- Plumbing
- Electrical installation – Part P registered
- Floor and wall tiling
- Less-abled Bathrooms and Wet Rooms



We are a member of the Institute of Carpenters and also the Guild of Master Craftsmen with over twenty years experience

Visit our website for more information - www.ddbhomesolutions.co.uk
For an informal discussion or quote please contact Darren or Jo Turnbull
Tel: 01480 495984, or email us at Darren@ddbhomesolutions.co.uk



ELECSA





JK Reflections
restore:relax:renew

Massage

Facials

Relaxation techniques

Mindfulness

Tropic Ambassador – freshly made, vegan, cruelty-free, green skincare products. Free Skincare consults in Swavesey/remotely.

Website: www.jkreflections.co.uk

Email: jo@jkreflections.co.uk

Phone: 07714 625243

Facebook: JK Reflections

Gift Vouchers & e-vouchers

ARE YOUR WINDOWS
READY FOR THE SUMMER ?

Give them a new lease of life with CST

NO CALL OUT CHARGES

All repairs carried out on UPVC,
Aluminium or Timber Installations

- ▶ Windows, Doors, Conservatories
- ▶ Conservatory Roofs
- ▶ Misted or Broken Glass
- ▶ Broken Handles, Hinges and Locks
- ▶ Cat Flaps and Letter Plates
- ▶ Door panel fitting

C.S.T

DOUBLE GLAZING REPAIRS
& Lock Maintenance

Tel: 01480 462 948

Mob: 07973 682562

www.cstupvcrepair.co.uk

cst.dgrepairs@googlemail.com

Professional Arborists based in Swavesey, Cambridge. We offer a free, no obligation quote. Advice on any trees/hedges. Deal with any conservation area or Tree Preservation Order Applications. A freindly, efficient service, leaving your garden or land clean and tidy.

Tree Felling / Dismantling
Crown reduction / thin / lift / deadwood
Pruning / Planting
Hedge trimming / reducing / removal
Stump Grinding
Seasoned logs

NPTC Qualified Staff
Full Liability Insurance



DELLAR
TREE SERVICES

30A Thistle Green, Swavesey
Cambridge CB24 4RJ

01487 740348 / 07703 568 474
dellartreeservices@hotmail.co.uk

R.A. Denton

Painting & Decorating

High Quality



Industrial

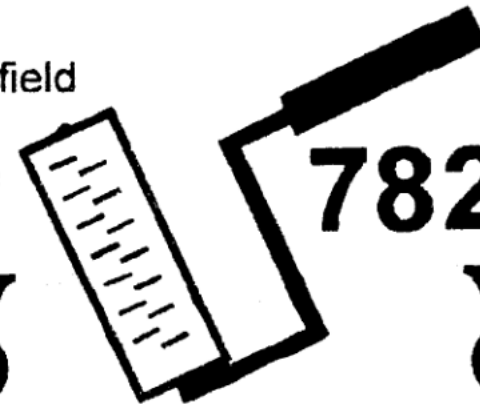
Commercial

Domestic



102, Stonefield
Bar Hill
Cambridge
CB3 8TB

782472



For all your building requirements,
please contact Paul Hendry

GEORGE HENDRY & SON Building Contractors

33 Wallmans Lane, Swavesey
Cambridge, CB24 4QY

Telephone: 01954 200613
Mobile: 07778686791
Email: prh.ghs@gmail.com

Struggling with Long Covid?
Living with chronic pain?
Can't get a good night's sleep?



Traditional
Five Element Acupuncture

- diagnoses the root cause
- calms your nervous system
- relaxes tense muscles
- rebalances your body
- nourishes mind and spirit

Give the gift
of relaxation!
Gift vouchers
available at
kr-acupuncture.com

Discover how working on your health
with a fully qualified Five Element
acupuncturist can transform your outlook.

Phone or email today for your FREE 20-
minute consultation with Willingham
acupuncturist
Kaye Rooney
Lic. Ac., B.A Hons. MBACc
kaye@kr-acupuncture.com
07593 058748

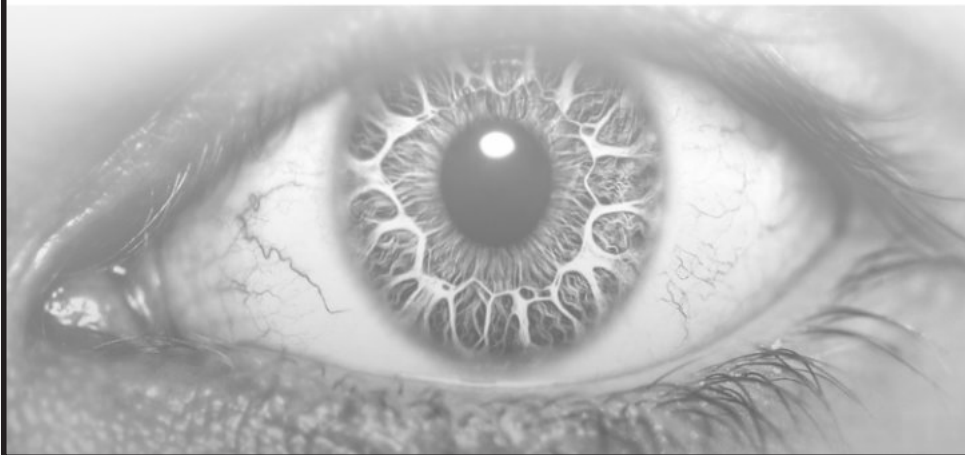


Eyes of Swavesey
Opticians



2 Station Road Swavesey,
Cambridgeshire, CB24 4QJ
T 01954 231158
E info@eyesofswavesey.co.uk

For all your eyecare & eyewear needs.
Come to your local, friendly, professional
& caring optician at Eyes of Swavesey.



CE APPROVED

Now only
£895*
for a fully
fitted electric
garage door.
WAS £1354 INCLUDING VAT.
Gotta get a Garolla.

Garolla garage doors are expertly
made to measure in our own UK
factories, they're strong and solidly
built. The electric Garolla door rolls
up vertically, taking up only 8 inches
inside your garage, maximising
valuable space. Our experienced
installers will fit your new door and
they'll take away the old one too,
so there's no mess.

Give us a call today and we'll come
and measure up **FREE** of charge.

GAROLLA
ROLLER
SHUTTER
DOORS

www.garolla.co.uk

CALL US TODAY ON:
01954 750 018
MOBILE:
07537 149 128

LINES OPEN 7 DAYS A WEEK

Trustpilot
4.8 out of 5 (Over 2,000 reviews)

*Offer valid for openings up to 2.6m wide & including 2 remote controls, 55mm white slats, internal manual override.

Swavesey Windmill

Hale Road Swavesey Cambridge CB24 4QP
Tel: 01954 232 247

Fantastic function hall with licensed Bar available for hire for any event, set in the grounds of The Windmill.

Private parties, Fundraising
Charity Nights, & Band Concerts!

Licensed with Cambridge County Council
For Weddings, Civil Partnerships,
& Baby Naming Ceremonies

To book to view or hire please phone Pam or Lisa.
To keep updated on events follow
Swavesey Windmill on Facebook



Sales: Servicing Salt

AQUASTREAM
Water Softeners limited

- ▶ Supply & Installation Service
- ▶ Servicing & Repairs
- ▶ Drinking Water Systems
- ▶ Salt Delivery & Collection

01954 230898



www.aquastream-softeners.co.uk

Unit 17 Meridian, Buckingham Business Park, Anderson Road, Swavesey, Cambridge, CB24 4AE

Authorised
Ecowater & Kinetico
Dealership



Special Fees apply for readers



114-116 Regent Street, Cambridge, CB2 1DP Tel: 01223 462 013

MA
Morris Armitage

There's a reason these signs are everywhere...

...we're serious about your property

Call now for a free market appraisal

Tel: 01223 462013

Email: cambridge@morrisarmitage.co.uk

114-116 Regent Street, Cambridge, CB2 1DP

Tel: 01223 462 013

AJ Carpentry



Local, family run business who thrive on transforming project dreams into a stunning reality!

Extensions – Conversions – New Builds – Groundworks – Bathrooms

Kitchens – Flooring – Electrical works – the list is endless!

www.ajcarpentry.co.uk

07989 341724 / 07812 671495

Financial advice made personal

We recognise that talking about money and finances is personal – sometimes sensitive. So it's reassuring to know that there's someone on hand who can help you address your needs, understand your goals and realise your dreams.

We offer a friendly and approachable service, backed by the strength and security of FTSE 100 company, St. James's Place Wealth Management; and being local means we're here to help whenever you need us.

Please do get in touch for a chat.

TAIT FINANCIAL SERVICES LTD

Associate Partner Practice of St. James's Place Wealth Management

Tel: 01954 231768 | 07768 305151

Email: james.tait@sjpp.co.uk

www.taitfinancialservices.co.uk



The Partner Practice is an Appointed Representative of and represents only St. James's Place Wealth Management plc (which is authorised and regulated by the Financial Conduct Authority) for the purpose of advising solely on the group's wealth management products and services, more details of which are set out on the group's website www.sjpp.co.uk/products. The 'St. James's Place Partnership' and the titles 'Partner' and 'Partner Practice' are marketing terms used to describe St. James's Place representatives.

SJP11596 V1 (12/19)



The truly independent cruise & travel company
01954 232 802 | sales@ponderstravel.co.uk

The World of Travel is now in Over High Street.

Ponders Travel opened a new Travel Agency in January 2019.

Opening hours

Monday – Friday, 9.30am – 5.30pm

Saturday, 9.30am – 4.00pm

Pop in and see our new shop at The Gallery, 25 High Street, Over

Special Offers | Tailor Made holidays | 35 years' experience

Contact us today for more information

01954 232802 | sales@ponderstravel.co.uk |
www.ponderstravel.co.uk

Rothwell's Carpet Cleaning

**Carpet, Stone Floor,
Upholstery & Rug Cleaning**

A few points that make us stand out,

Rothwell's has been in business since 1993

We're an honest local family firm.

Our large truck mounted machines mean more cleaning & drying power for the best results possible.

Members of both the NCCA and TACCA.

We will move the furniture.

100% satisfaction or it's FREE.

*Call Oliver and Max Campbell
for expert help today.*

01223 832 928

www.Rothwells.biz

STEPHANIE'S CARE

Care and Support in your own home

Offering Compassion, Kindness Confidentially
as well as Personnel Care to my clients

**I am local so if you think I might
be able to help you please
contact me for an informal chat on
the phone or in your home**

Telephone: 01353 777 789

Mobile: 07800 668 788

**Qualified in Health & Social Care Level 3
18 years extensive experience
Fully Insured & Enhanced DBS Checked
Reference's are available**

Contact us:
david@rosegatefarm.co.uk
07922 588171



Rose and Crown Road Road, Swavesey

Butchery Open Fridays (8.30 am - 5.30 pm) & Saturdays (8.30 am - 1.30 pm)

www.rosegatefarm.co.uk

Bespoke Butchering – butchered to suit your requirements

BEEF

- Primarily from our own Hereford / Angus herd
- All at least 21-day aged

PORK

- Bred & reared here at Rosegate Farm.
- Home-made sausages, dry-cured bacon and gammons (smoked and unsmoked)
- Cooked Ham

LAMB

- Swavesey born and bred
- individual cuts, or ¼, ½ or whole lamb packs available

CHICKEN (sourced from Diaper Poultry)

- Sutton Hoo Free Range
- St George Chicken

BBQ Meats – Burgers – Kebabs – Glazes

See you in the butchery!



LIGHT REMOVALS

Small Houses to Single Items

**ANY DISTANCE
7 Days a Week**

For a Free Quote

Telephone:

01480 352220

07711 556833

www.cambslightremovals.com

Accountancy & Taxation Services



- Tax Returns
- Business Accounts
- Bookkeeping
- VAT Returns
- Payroll
- Audits

L.A. Wells FCCA CTA

Chartered Certified Accountant, Chartered Tax Advisor

4 Scoreney
Fenstanton
Huntingdon
Cambridgeshire
PE28 9QG

Tel: 01480 466 197



www.lwells.co.uk



**ENTIRE
GROUP**



300007



The Complete Gas Heating and Plumbing Company

**Plumbing • Heating • Gas
Bathrooms • Water Softeners
Property Maintenance**

**Tel: 01954 204044 • Web: www.entiregroup.co.uk
Email: service@entiregroup.co.uk**

Open 6 days a week



**Total
Relaxation**
at the farmhouse

Tel: 01954 789 344

Aromatherapy, Body Massage, Indian Head Massage, Reflexology, Hot Stone Massage, Hopi Ear Candles, Facials, Nail Extensions, Manicures & Pedicure, Gel Polish, Lash and Brow Treatments, Waxing, Hairdressing

Gift vouchers always available

www.total-relaxation.co.uk

email: total.relaxation@ntlworld.com

The Old Farmhouse, Gladeside, Bar Hill, Cambridge CB23 8DY

ANDREW EVANS

01954 780 999 – 01223 864335

email: andrew@omegaclean.co.uk

www.omegaclean.co.uk

- ✓ Carpet Cleaning
- ✓ Upholstery Cleaning
- ✓ Tile & Grout Cleaning
- ✓ Leather Cleaning
- ✓ Oriental Rug Cleaning
- ✓ Carpet & Fabric Protection
- ✓ Allergy Relief Treatment
- ✓ Odour Eradication
- ✓ Stain Removal
- ✓ Carpet Fitting

Family Business Since 1980



MOBILITY EQUIPMENT

SCOOTERS, WHEELCHAIRS,
RISING CHAIRS, BEDS,
WALKERS, TOILET, BATHING,
KITCHEN AIDS, STAIRLIFTS,
CONTINENCE CARE

Orchard Mobility Centre
Scotsdales Garden Centre
High Street
Horningsea
CB25 9JG



01223 863908

Mon to Sat 9.00 - 5.00

Stamp Chiropody & Podiatry

Casey Stamp MCPod BSc (Hons)

HCPC registered CH15068



- General chiropody – nails, hard skin & corns
- Diabetic foot care
- Children's Feet – Growing pains, Verrucas, etc.
- Sporty Feet & associated injuries + pains
- Ingrowing toe nails
- Custom made Orthotics/insoles
- Dancing feet – we'll keep you on your toes
- Biomechanics & Gait analysis

New Clients Always Welcome.

Find us at:

Willingham Medical Practice,
52 Long Lane, Willingham,
Cambridge, CB24 5LB

Tel: 01480 464507 or 07807505534

Also available at:

Salus Wellness Clinics
47 Norfolk St
Cambridge CB1 2LD

Tel: 07807 505534

www.stamppodiatry.co.uk

CHIMNEY SWEEP Cambridgeshire Trading Standards Approved



- Fully Insured
- Enhanced CRB Check
- Certificates issued
- Bird nests removed
- All types of chimney swept
- No Mess, No Fuss



MAKE AN APPOINTMENT
TODAY WITH

SWEEPOVER

Tel: 01954 230777
Mob: 07779711458

www.sweepover.co.uk

19 New Road, Over, CB24 5PJ



The Ultimate
FLOOR SANDING
Company

AFFILIATED SERVICE PROVIDER

Dust Free Wood Floor Sanding & Restoration

Is your Wooden Floor in need of
Sanding?

Call us today **01223 863 632**

Please quote "Swavesey Mag"

www.floorsandingcambridge.co.uk



Vintage
travel
your own pool

..holidays with added peace of mind.

Your Local
Travel
Company

Handpicked Villas with private pools.
Over 30 years of creating perfect holidays.
Book with confidence.



• Greece • Spain • Lanzarote • Balearics • Portugal • Turkey • France • Italy • Croatia • Cyprus

01954 261 431

www.vintagetravel.co.uk



MAGAZINE ADVERTISING RATES

ADVERTISING RATES AS FROM APRIL 2022.
For a one year inclusion i.e. six issues.

Size	Advertiser	Magazine
Full page	£215	£285
Half page	£110	£158
Quarter page	£72	£97

The following rates are for one inclusion only and as a premium rate is already charged will be positioned in the magazine section:-

Half page one inclusion only £75

A small charge may be made for creating and amending artwork

For all advertising details please contact:
April Martin Tel: 01954 200533 or
Email: adverts@swaveseymeridian.org.uk



Plumbing and heating supplies
to the trade and public



We are a local independent company supplying
all your plumbing & heating needs, including:

**Bathroom Taps • Boilers • Bathroom Suites
Underfloor Heating • Central Heating Radiators
Heated Towel Rails • Showers • Kitchen Taps
Sinks • Baths • Sanitaryware
Plastic Plumbing Systems • Fittings**



Do not hesitate to ring, email or visit...

Unit 10, Norman Way Industrial Estate, Over, Cambridge CB24 5QE.
Tel: 01954 230268. E-mail: info@dandtsupplies.co.uk www.dandtsupplies.co.uk

EXTRA MAGAZINES

Send a Meridian Magazine subscription to your favourite Auntie, or to a friend who has recently left the village.

Six issues (one year) costs only £12.00.

Send a cheque (made out to 'The Meridian Magazine') and the address of the recipient, to:

Jan Waller, Meridian Subscriptions,
35 Carters Way, Swavesey, Cambridge, CB4 5RZ

NOTIFICATION OF MAJOR EVENTS

Please use this form to notify us of any major events you are organising so that we can publish the dates in the magazine and on the website at www.swaveseymeridian.org.uk. It is hoped this will avoid major events clashing on the same day. Please send to the Editor, 14 Black Horse Lane, Swavesey.

Event _____

Location _____ Date _____ Time _____

Contact Name _____ Tel No. _____

BIRTHDAYS, ANNIVERSARIES & SPECIAL OCCASIONS

If you would like to mark any occasion that is special to you or somebody that you know by announcing it in this magazine, please fill in the form below.

Also supply your name and contact details, and return to the Editor by the copy date. We will endeavour to include it in our next issue.

SHORT MESSAGE:

USEFUL TELEPHONE NUMBERS & WEBSITES		
Doctor's Surgery (Swavesey)	01954 230202	
Doctor's Surgery (Over)	01954 231550	
Police:		www.cambs.police.uk
Emergency	999	
All Non Emergency Calls	101	
Swavesey Parish Council	01954 202982	www.swavesey.org.uk
Swavesey Pre-school Enquires	01954 273312 Ext 2	eyandp@swavesey.cambs.sch.uk
Swavesey Primary School	01954 273312	www.swavesey.cambs.sch.uk/
Swavesey Village College:	01954 230366	www.swaveseyvc.co.uk
Community Office	01954 234488	www.swaveseyvc.co.uk/community-education/
Swavesey Post Office	01954 232311	
Cambridgeshire County Council:		www.cambridgeshire.gov.uk
General Enquiries	0345 045 5200	
Library Service	0345 045 5225	www.cambridgeshire.gov.uk/leisure/libraries
South Cambs District Council	01954 713000	www.scams.gov.uk
Electricity (UK Power Networks):		
Power Cut Report Line	0800 3163105	www.ukpowernetworks.co.uk
Gas Emergencies (National Grid)	0800 111999	www.nationalgrid.com/uk/gas
Water (Cambridge Water Company):	01223 706050 (opt 4)	www.cambridge-water.co.uk
Sewage (Anglia Water) Emergency	08457 145145	www.anglianwater.co.uk
Environment Agency (Flood Line):	0845 988 1188	www.environment-agency.gov.uk
Incident Reporting Line (pollution etc)	0800 807060	
Samaritans	116 123	www.samaritans.org
Addenbrooke's Hospital:	01223 245151	www.addenbrookes.org.uk
Hinchingbrooke Hospital	01480 416416	www.hinchingbrooke.nhs.uk
NHS Direct	111	111.nhs.uk
Airports + Road & Rail:		
Local Taxi: Alpha Cars	01954 232300	www.alphacarsonline.co.uk
Gatwick	0844 3351802	www.gatwickairport.com
Heathrow	0844 335 1801	www.heathrow.com
Luton	01582 405100	www.london-luton.co.uk
Stansted	0844 3351803	www.stanstedairport.com
Traveline (Bus Coach & Rail)	0871 200 22 33	www.traveline.info
Local Timetables:		
Cambridgeshire Bus Information		www.cambridgeshirebus.info
Stagecoach	01223 433250	www.stagecoachbus.com
National Express Coaches	0871 781 8181	www.nationalexpress.com
Whippet Coaches	01954 230011	www.go-whippet.co.uk
National Rail	03457 48 49 50	www.nationalrail.co.uk
Veterinary Practices:		
Village Vet (Longstanton)	01954 780027	www.villagevet.co.uk
Ash Croft (Hardwick)	01954 210250	www.ashcroftvet.co.uk

THIS MY THEATRE

The Nutcracker & The Mouse King

St Andrew's Church
Sunday, December 11th at 3pm

Tickets: £12.50, under 16s: £8.00
www.thisismytheatre.com/nutcracker-tickets
 Or: Nicky Carne: 01954 230971:
nicky_carne@hotmail.com or Jacqui Fuller:
 01954 230774: jacqui_fuller@hotmail.com

Swavesey Radsoc Presents

Alice in Wonderland



A pantomime by
Andrew O'Leary



20th-22nd Jan 2023
Swavesey Village College

Tickets:

www.swaveseyradsoc.org.uk

07563 334555