

# THE MERIDIAN SWAVESEY



**No. 207 April/May 2024**

**Sunday  
12th May 2024**



# The Five Pub Challenge

**Back by popular request. All proceeds to go to Over Day Centre, this year to help raise further funds towards solar panels.**

Meet at Over Day Centre, Drings Close, CB245NZ from 10.00am, for a 12.5 mile walk through the beautiful Cambridgeshire fens to the Pike & Eel, the Ferry Boat, the Three Tuns, the White Horse, to finish at the Over Community Centre.

Minimum donation of £12 per adult, children free. Under 18s are very welcome but must be accompanied by a responsible adult. The length of the route may make it unsuitable for younger children.

Details of registration and how to donate will be published soon.

## EDITORIAL

Busy Busy! lots happening in the next 2 months so hold on to your copy of The Meridian! The Memorial Hall is 100! Swavesey like many villages across the UK built these to keep alive the memory of those who died in The Great War as it was called. Many would have been young and never left their local villages before let alone travelled to another country. Sadly, many did not return.

So go along and look at all the information .

This issue also has information about the annual Camera Club Competition - go along and see the magical pictures they have produced. maybe it will inspire you to try.

Spring is here blossom everywhere! let us hope the rain stops so we can all go out and enjoy it.

Deadline for the summer issue (June/July) is **20th April**

Editor

IN THIS ISSUE ...	
Front Cover - Great Ouse at St Ives by Edwin Parish	
Inside Front Cover - 5 Pub Challenge	
Inside Back Cover - RADSOC Production	
Back Cover - Memorial Hall 100 Years	
Editorial	page 1
Meridian Committee	page 2
Major Events List	page 3
Dates for your diary and forthcoming events	page 4
Club Reports	page 5-14
Miscellany	page 16-25
Medical News	Page 26 -27
School Information	page 28-33
Parish and County news	page 34-37
Churches	page 38-44
Community Groups & Charities table	page 45
Club Information	page 46-48
Advertiser	page 49-70
Extra Magazines, Major Events & Birthday forms	page 71
Useful Telephone Numbers	page 72

## MERIDIAN COMMITTEE

Editor:	April Martin	Tel: 01954 200533
Treasurer	David Gedny	Tel: 01954 231305
Production:	Alan Morris	Tel: 01954 202664
Advertising:	David Gedny/April Martin	Tel: 01954 231305 / 01954 200533
Distribution	Neil Jordison	Tel: 01954 204390
Subscriptions	Jan Waller	Tel: 01954 230795
Complaints	Maureen Hadfield	Tel: 01954 230414
Proofreading	Alison Lucas	Tel: 01954 232984
Website:	Alan Morris <a href="http://www.swaveseymeridian.org.uk">www.swaveseymeridian.org.uk</a>	Tel: 01954 202664
Emails:	<a href="mailto:editor@swaveseymeridian.org.uk">editor@swaveseymeridian.org.uk</a>	
	<a href="mailto:adverts@swaveseymeridian.org.uk">adverts@swaveseymeridian.org.uk</a>	
	<a href="mailto:webmaster@swaveseymeridian.org.uk">webmaster@swaveseymeridian.org.uk</a>	
	<a href="mailto:distribution@swaveseymeridian.org.uk">distribution@swaveseymeridian.org.uk</a>	

## Major Events List

This list is intended to avoid major events clashing on the same day. It will only work if we are advised of all such events, so please let us know as soon as you can confirm the details.

A form is available at the back of this magazine. We will list them in this section of the Magazine and also on our website at [www.swaveseymeridian.org.uk](http://www.swaveseymeridian.org.uk)

Saturday 23 March	Camera Club	Photo Exhibition - 10am - 4pm in The Memorial Hall
Saturday 23 March	St Andrews Church	Easter Fair
Sunday 12 May	Over Day Centre	5 Pub Challenge
Saturday 18 May	Memorial Committee	100 Years Celebration - 10am - 3pm in The Memorial hall
Saturday 18 May	St Andrews Church	Plant Sale

SUMMIT



# LANDSCAPES

PAVING - DRIVEWAYS - BRICKWORK  
CARPENTRY - GROUNDWORKS





[www.landscapingpaving.co.uk](http://www.landscapingpaving.co.uk)  
PHONE: 01223-929394



## HEMINGFORD ARB

PROFESSIONAL TREE SURGEON

- ⌘ Felling/sectional felling
- ⌘ Crown reduction/thinning
- ⌘ Pollarding
- ⌘ Shaping
- ⌘ Hedge trimming
- ⌘ Stump grinding
- ⌘ Firewood for sale
- ⌘ Free quotation

All aspects of garden and tree work covered.  
NPTC Qualified. Fully insured.

Tel: 01480 463674  
Mob: 07876 521605  
Email: [hemingfordarb2016@gmail.com](mailto:hemingfordarb2016@gmail.com)




<b>March</b>		
Saturday 23	Camera Club	Photo Exhibition - 10am - 4pm in The Memorial Hall
Saturday 23	St Andrews Church	Easter Fair
Monday 25	Refuse Collection	Green & Blue Bins (Note: Monday 4 days early)
Monday 25	Parish Council	Full Council Meeting
<b>April</b>		
Friday 5	Refuse Collection	Black Bin Collection
Thursday 11	Parish Council	Planning Meeting
Friday 12	Refuse Collection	Green & Blue Bins
Friday 19	Refuse Collection	Black Bin Collection
Monday 22	Parish Council	Full Council Meeting
Friday 26	Refuse Collection	Green & Blue Bins
<b>May</b>		
Friday 3	Refuse Collection	Black Bin Collection
Thursday 9	Parish Council	Planning Meeting
Friday 10	Refuse Collection	Green & Blue Bins
Sunday 12	Over Day Centre	5 Pub Challenge
Friday 17	Refuse Collection	Black Bin Collection
Saturday 18	Memorial Committee	100 Years Celebration - 10am - 3pm in The Memorial hall
Saturday 18	St Andrews Church	Plant Sale
Monday 20	Parish Council	Full Council Meeting
Friday 24	Refuse Collection	Green & Blue Bins



## Swavesey WI News

Meetings coming up.....

**April 8th** "Experiences of hospital ships as a Doctor in Africa"

**May 13th** Nature Craft.

If you would like further information of any of our meetings or would like to join us please contact:-

Margaret Guest. 01954 202757

Deirdre Burgess 01954 230897.

We meet on the second Monday of the month in the Memorial Hall at 7.30pm.

At January's meeting, members took part in an "Auction of Unwanted". This proved to be a fun evening and raised £111.

In February, members enjoyed a visit from local author David Duker who spoke about his latest book "One of our Own" which is the remarkable story of Battle of Britain pilot, Squadron Leader Victor Ekins MBE. DFC. An inspiring and enthusiastic speaker, David gave us all a unique insight into the mind and experiences of a very brave and respected man, who was one of Churchill's "Few". Copies of the book were sold at the meeting and this proved successful.....they all sold!!

On the 4th Thursday of the month Swavesey WI hosts the Compass Cafe. Always popular, good coffee and a wonderful selection of homemade cakes. We look forward to seeing you!

## Swavesey Sustainability News

June 1st is the date of the next Sustainability Hub community event, 10-2 at the Memorial Hall as usual. The Christmas event was great fun and from the repair cafe alone 360kg of CO2 was prevented from being released - based on the assumption that people would have bought a new item to replace the broken one had the local volunteer repairers not fixed them - and 42kg saved from landfill. If you would like to book an item for the June repair cafe please email [cambridgegills@hotmail.co.uk](mailto:cambridgegills@hotmail.co.uk) - electrical, sewing, bikes, general.

Sheddit will be there again helping you create a wildlife friendly addition to your garden from reclaimed materials, after the huge success of the bug hotel building. Also a book sale by Swavesey library, and plenty of creative summer themed sustainability activities and actions to take. Please do send a photo of any installed hedgehog gateways from the previous event to [clerk@swavesey.org.uk](mailto:clerk@swavesey.org.uk), so the Parish Council's wildlife map can be updated, and share pictures as the wildflower seeds grow. Watch out for further information on this event.

This year's Annual Parish Meeting on April 10th, to which all residents are warmly invited, will be to inform on local flooding. In keeping with this there will also be a presentation and public discussion on Climate Action, enquiring what further actions can be taken within Swavesey to help it adapt to current and future changes and what can be done to reduce its impact on the planet.

### Swavesey Litter Pickers

February saw the successful formation of the "Swavesey Litter Pickers" which aims to:

- connect local litter pickers
- celebrate their efforts and provide a platform to discuss ideas and challenges
- ensure our local litter pickers are supported with equipment requirements
- recruit and equip more local litter pickers
- coordinate group activities to tackle problem areas
- use social media to raise the profile of litter related issues

Our current members litter pick for a variety of reasons, such as helping wildlife, improving our local environment, contributing to the community, to exercise and to get outside more. Everyone is welcome to join us and if you would like further information, please message the Facebook page "Swavesey Litter Pickers" or email:- [clerk@swavesey.org.uk](mailto:clerk@swavesey.org.uk).

## IT ISN'T TOO LATE.

We hope you enjoyed our Exhibition at the end of March: the prints, projected images, audio visuals, the picture cards, all the super cakes. We look forward to seeing all our friends on this special day, and always have tried to make you feel part of our group by inviting you to enter our Open Competition. This year we felt it was time to be more 'hands on', with two workshops, Macro and Portrait, sharing not just our photos but techniques too. As a club we pride ourselves on the generous way our more experienced members are more than happy to share all their knowledge with the rest of us. This is the first time it has been done outside club premises for our friends to join in. We hope you all had a great time; now you will probably be encouraged to try other things outside your comfort zone, if so, you would get a warm welcome at our friendly club.

It would be a shame if you missed the Exhibition this time, but all is not lost. The photographs will probably be on our website until the Autumn at least. Of course, we still have lots on in the College. Two more Competitions, Bamber Trophy on 25th April, and the Pairs Competition on 9th May, another time when members work together swapping expertise. Two lectures to come, 'Life in the Blender' by Jonathon Vaines, and 'Architectural Photography' by Tom Peck, 2nd May.

After this we have three meetings only, before the Summer break. All our winning images will be displayed once more for us members to choose our 'Image of the Year'; this will appear as the heading on our website, and on membership cards for our 2024/25 season. The AGM will be on 23rd May, and the Annual Dinner on 30th May.

For last minute announcements keep your eyes on the website.

Mo Hadfield.

Swavesey Camera Club.

[www.swaveseycameraclub.co.uk](http://www.swaveseycameraclub.co.uk)

## Selwyn's Alphanumeric Quiz. Part 1.

There have been grumbles that the Pop Groups Quiz is too easy for many Swavesey residents. Selwyn does not take kindly to criticism so, for this Meridian, he offers this more challenging alphanumeric quiz. Example 1: 7 D in a W. 7 Days in a Week. Example 2: 23 R C. H of T H. 23 Railway Cuttings. Home of Tony Hancock. We said it wasn't easy.

1	366	D in a L Y	6	4	W and a F
2	18	H on a G C	7	10	G B H on the W
3	6	of O. H a D of the O	8	1966	E W the W C
4	20000	L U the S	9	36	I in a Y
5	617	The D B S	10	30	F B D in the N L

You will find the answers to this puzzle on page 16

**R. A. Miller**  
**Plumbing and Domestic Heating**  
 Fenside, 71 Willingham Road, Over  
 Cambridge CB24 5PE  
 Tel: 01954 203277 Mob: 07831 853885  
 Email: robert.miller@ntlworld.com

---

**All plumbing work undertaken**


- » New boiler replacement and installation with free quotation.
- » GAS boiler and GAS fire servicing  
Landlord Certificates.
- » Heating problems - Diagnosis and rectification.
- » General plumbing - taps, washers, pipework, showers, etc.
- » Full and partial Bathroom installation work.


---

For a reliable and professional service

**Robert Miller MCIPHE RP**

Office 01954 203 277  
Mobile 07831 853 885





Family firm since 1974

# PEST PROBLEM?

LOCAL QUALITY SERVICE

pest control/prevention/  
emergencies/contracts/quotations/  
birds/rodents/insects/more...

---

t: 01954 230708  
m: 07789 502556  
w: www.drepestcontrol.co.uk  
e: info@drepestcontrol.co.uk



19, WALLMANS LANE  
CAMBRIDGE  
CB24 4QY



## Swavesey Spartans FC

As you pick up this edition of the Meridian you will be looking forward to the Easter weekend followed by the clocks springing forward and lighter evenings to enjoy. Swavesey Spartans are now entering the business end of the season, which will be followed by our AGM and the imaginatively titled "Spartans Day" annual celebration day. Traditionally Spartans Day is on

Fathers Day, normally it would be 16 June 2024, this date is not confirmed yet and the committee are looking at alternatives. The agreed date will be published on the Major Events List on the Meridian website once agreed. The usual off-season activity of closing down and submitting accounts, securing home grounds and affiliating teams for the 2024/25 season including registering in excess of 200 players will fill the summer evenings.

In 2023/24 Spartans entered teams into 3 Cambridgeshire FA organised leagues. Mini League (4 teams for ages 6 to 11 boys & girls) & Girls League (5 teams for females aged 6 and into the open age football) and the Colts League (5 teams ages 12 to 18 boys & girls). In addition Swavesey's Walking Football is formally part of the club. Before the season started we lost a lot of under 15 colts' players to higher level football forcing us to withdraw one team from the league. During the season our Ladies team decided to revert to friendly football. We finished the season with 12 league teams, the ladies playing friendlies and the Walking Football squad honing their skills every Wednesday evening.

Formed in 1989, the club is now 35 years old. It was formed in the same year as Tim Berners-Lee invented the World Wide Web, the Berlin Wall came down and tragedy struck when 97 football fans were killed at the FA Cup semi-final between Liverpool and Nottingham Forest at Hillsborough, Sheffield. Liverpool went on and won an all-Merseyside FA Cup Final The formation of the Premier League was still 4 years away. Arsenal won the first division, Chelsea won the second, Wolves, the third and Rotherham the fourth. Unfortunately, after 68 years in the football league Darlington were relegated to the Conference (National League today) and Maidstone replaced them in Division 4 (League 2).

Running a football club costs a lot of money. Although each player pays a fee this is made more affordable by the generosity of our sponsors. We would encourage you to consider using and owe thanks to: - Matthew Homes; Nexus Fostering; FDS Cambridge; IT for Starters; Cambridge Buses; Orbital Fabrications; Ken Booth & Co; Industrial Inkjet; AJ Carpentry & Building Services; AMS Group and Spartan Recruitment. We hope for their continued support and would welcome any new sponsors to get in touch using the contact details in the "Club Information" section of this magazine. Readers wanting to use the named sponsors are welcome to make contact through the club.

Finally, if your child wants to join the club or any adults would like to coach, act as match officials or lead fundraising events we would welcome your call/email.

## Jottings from the Hale Road Allotments.

Hopefully by the time the Meridian drops on the doormat Spring will have arrived. The rain will have given way to warmth and some sunshine. By then our plot holders will be nurturing new crops and harvesting asparagus. On a spring day there is nothing like being on the allotment site harvesting what is currently at its best and planting things for the months to come. So what do we grow? Have a go at the word search and find some of the vegetables our plot holders grow each year.

If you would like to find out more about joining us at Hale Road Allotments please feel free to give me a ring. My details are in the club section of the magazine.

Val



### Word Search - Vegetables

I	E	T	N	H	C	O	I	S	D	O	N	E	G	R	G	E
H	I	L	L	I	H	C	E	T	M	C	E	R	R	N	U	R
O	U	N	L	A	K	E	H	T	O	S	N	O	I	N	O	N
R	A	R	M	E	D	P	S	C	H	E	R	A	O	L	H	V
T	A	M	A	D	S	I	M	A	C	N	R	M	D	G	K	T
G	C	A	R	R	O	T	S	U	G	A	R	A	P	S	A	S
W	I	A	R	I	W	O	C	L	P	M	E	S	S	E	P	H
E	H	K	O	S	H	U	S	I	M	O	C	F	N	O	O	A
C	O	E	W	B	M	Q	L	F	U	R	U	I	E	T	T	L
S	A	E	P	B	U	O	E	L	A	K	T	T	C	A	A	L
O	D	L	E	A	C	S	E	O	T	T	T	I	N	M	T	O
E	S	R	S	C	R	N	H	W	B	E	E	T	R	O	O	T
Y	H	H	O	E	N	S	E	E	G	K	L	B	R	T	E	S
U	H	R	P	E	I	A	N	R	O	C	T	E	E	W	S	I
E	B	P	F	D	A	S	U	I	P	O	Y	A	I	L	S	P
T	E	G	A	Y	I	O	A	B	P	R	H	N	I	E	Y	G
P	O	R	N	D	C	O	U	G	I	S	T	S	R	K	E	W

ASPARAGUS  
CARROTS  
COURGETTE  
KALE  
ONIONS  
POTATOES  
ROMANESCO  
SWEETCORN

BEANS  
CAULIFLOWER  
CUCUMBER  
LEEK  
PARSNIPS  
PUMPKIN  
SHALLOTS  
TOMATOES

BEETROOT  
CHARD  
FENNEL  
LETTUCE  
PEAS  
RADISH  
SQUASH  
BROCCOLI  
CHILLI  
GARLIC  
MARROW  
PEPPERS  
ROCKET  
SWEDE

Powered by [www.wordsearchcreator.co.uk](http://www.wordsearchcreator.co.uk) ©Copyright Rik Still 2024

Visit our truly stunning display gardens ...



Probably the largest display centre in the UK, selling directly to trade and the general public

Bannold are one of the UK's largest independent suppliers of natural hard landscaping materials. We stock natural products sourced directly from the UK and around the world enabling Bannold to offer premium products at the most competitive rates to trade and the general public.

- Natural Paving • Setts and Paviours • Stone Walling
- Decorative Gravels • Rockery • Boulders • Waterfeatures
- Topsoils • Soil Improvers • Bark Mulches • Sands
- Hardcore and Cements



Capability Barns  
Huntingdon Road  
Fen Drayton  
Cambridge CB24 4SD

Freephone: 0500 012231  
or 01954 231666

Opening Times:  
Mon-Fri 07.30 till 5.00  
Saturdays 09.00 till 1.00

[www.bannold.co.uk](http://www.bannold.co.uk)



## Swavesey & District History Society

**January Meeting.** Dr Caroline Shenton, former Director of the Parliamentary Archives at Westminster, spoke on "National Treasures: Saving the Nation's Art in WW II". The little-known story of how the priceless exhibits of Britain's museums, gallery and library collections were protected and preserved. These included Old Masters, the Magna Carta, the Crown jewels, the Parthenon Marbles, rare books, numerous marble statues and hundreds of tons of national archives from the Public Records Office. Winston Churchill ordered that all would be stored at home because the risk of sending to Canada, for example, was too great. So, they were stashed in ingenious hiding places across the country including stately homes, tube transport tunnels, slate mines, castles, prisons and stone quarries.

By the late 1930s it was realised that Hitler's army might soon race across Europe and Britain had to prepare plans against widespread damage and looting, first by bombing then by invading troops. A massive but covert effort was planned and quietly delivered mostly by a coalition of misfits, mild-mannered civil servants, high-profile public figures, social oddballs, inconspicuous scholars and others who discovered in themselves reserves of resilience and courage. On 1 September 1939 Hitler's forces marched into Poland. Already, by 25 August the escape plan for Britain's treasures had gone into action.

It took 5 weeks to build temperature and humidity-controlled brick sheds inside a slate quarry in Snowdonia while transporting the vast collection of the National Gallery to them. Despite two major rockfalls onto the brick sheds all came out safely in 1945.

Furniture, metalwork, porcelain and ivory from the V&A first went to Montacute House in Somerset then in 1942 it was moved to Much Markle in the Mendips. Paintings from the Tate Gallery went to Much Markle. Other V&A items went to the London underground, along with the Parthenon Marbles from the British Museum.

Several country houses stored numerous sculptures and many crates of monumental pieces of stonework from the British Museum including Drayton House and Boughton House, both in Northamptonshire. Treasures from Westminster Abbey also went to Boughton. Vast quantities of archives from the Public Records Office went to Haddon Hall in Derbyshire

The Chief Librarian of the National Library of Wales readily agreed to a rock tunnel being excavated under the main building to store thousands of British Museum books. The Domesday Book went from the National

Archives at Kew to a women's prison in Shepton Mallet. Items from the Houses of Parliament were placed underground at The Imperial War Museum. Precious paintings at Windsor Castle went into the vault in the on-site basement and other royal treasures were put into specially made underground tunnels there. One of the four original Magna Cartas was on loan to New York. At the outbreak of war, it was moved to the Library of Congress in Washington DC then at the end of 1941, when the USA entered the war, it was moved to Fort Knox.

**February Meeting.** On a cold, wet evening 40 people heard Terry Crump talk about his motorsport activities over a 55 year period during which he has raced 2, 3 and 4 wheeled vehicles. Terry is a retired product design engineer who has lived in Swavesey for 47 years. In the early 1960's he met some top American dragster racers along with Donald Campbell who was demonstrating his jet car Bluebird at Blackbushe Airfield. As a Stevenage schoolboy he helped a number of local World Record Holders throughout the 1970's including Clive Angel, from Over, George Brown, Tony Driscoll and Adrian Reynard.

In the early 1970's he first rode motorcycle sidecar for his father Vic Crump at the Brighton Speed Trials and developed it further as an apprentice at ICL until 1974 when he met the Duke of Edinburgh at a local Gold Award event. In 1975 he rebuilt and raced for a number of years, a Reliant powered Formula 750 racing car with a school friend, Bob Hampton. In 1979 he designed, built and raced in 1980 an electric three wheeled car made of paper composites at a national event at Donnington Park and came 13<sup>th</sup> out of 250. He was invited by Ciba-Geigy to design and build a 2<sup>nd</sup> composite three wheeler to attempt the Cyclecar World Land Speed Record using a Yamaha 250cc engine and gearbox. An air operated gearshift was added to minimise gear change timing. In October 1983 he broke the World Record at Elvington, York and the following year reduced the time again unofficially to 12.853 secs for a quarter of a mile at Santa Pod Raceway, after further engine development.

In 1989 he and his brother Andrew raced a Ford Capri, then went on to rebuild a 2,000cc Ford Escort Mk2 and Rallied it from 1993 to 1997. They then converted it for Speed Hillclimb and successfully raced it until the end of 2003. In 2004 he joined Lola Composites as the Manufacturing Engineer on the McLaren Mercedes SLR Supercar and in 2005 became Quality Manager on the A1 Grand Prix car project. In retirement he has encouraged his Grandson Archie's interest in race cars taking him to Goodwood and Lydden Hill race meetings to help with his cousin Michael Moulder and an old race friend Russell Dawkes who compete with their Hillman Imp powered saloon car.

## Memories by Will Wright

The band had changed its name again and for a very brief period was known as "Freak Down Lucifer", which was mainly connected to Frank Zappa's album entitled Freak Out and largely as a result of the light show with the primitive smoke machine we were using, however it wasn't long before we became known as "Mr. Lucifer" on the circuit. It was about this time when our Standard Atlas van gave up the ghost, not surprising really as the engine was less than 900 cc! We went down to Rich's yard at the top of Coldhams Lane where there was an enormous number of old ex-military vehicles for sale and we managed to pick up an old Bedford Civil Defence ambulance which only had 9,000 miles on the clock and only cost us £80 - bargain seeings as it had 3:75 litre engine, though we did have to learn how to "double de clutch" when changing gear but that very quickly became a routine part of driving. It wasn't long before we painted the band's name in red on both sides, and it was amusing to see that many messages, mainly from female fans, were also written on it in red lip-stick. Unlike most vehicles of a similar nature it was fitted out with hardboard internally which meant we were later able to arrange for a triple bunk space above the rear seating area plus space for 2 more in the seating area for an overnight stay, without having sweat gathering on the internal wall panels. By this time we were well ready to hit the road and despite the large engine size, petrol & diesel prices were relatively cheap and we were able to buy 4 gallons of fuel with a couple of shots of Redex and still managed to get a few pence change from £1 back in the day!!

As a group we weren't signed to either a sole agency or a management deal and this meant we normally only had to pay 15% commission on the fees received for the gigs, though of course some times we had to pay an extra 5%. We were gradually building up agency contacts further afield than Cambridgeshire

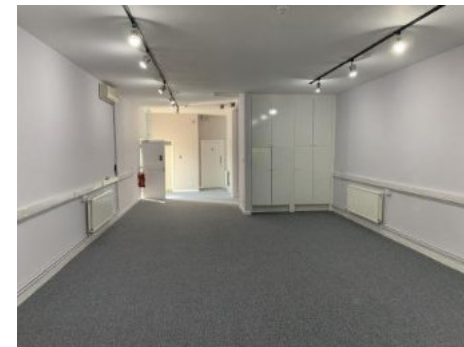
By mid 1966 the band had acquired a keyboard player with a Hammond Organ, Dave, who lived with his family on Mill Rd and we were doing a lot of gigs in East Anglia which had at that time an enormous amount of aerodrome bases. There was a collection of both both English & American bases which were still operational as we were in the Cold War period and Europe was extremely divided after the end of world war 2. Most English bases had 3 entertainment venues therein, such as a youth club for the children on the large bases, an air-mans club and of course an officers club, the total entertainment budget must have been enormous. Initially we were booked for the base youth clubs and soon began to get bookings in many of the airman's clubs as well and, unbelievably, we achieved some bookings in a few of the officers clubs.

On the return journey home we almost always stopped off at the original Red Lodge cafe for a break and a coffee & bite. Back in those days the cafe was basically a couple of original railway carriages which had been renovated into a transport cafe and turned into a dining unit. The cafe is still operative in the same location but is now of course a re-built version to comply with modern day regulations. Back in the 60's if you visited in the early hours you would probably find it full of people in the music industry taking a break on their journey home. In fact I first met many people there in the 60's and our lives crossed on numerous occasions as we went through our working lives in the music business. It certainly is a small world!



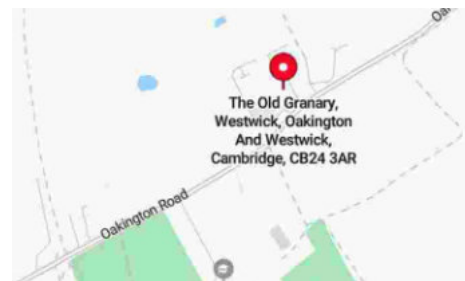
### The Old Granary - Westwick (near Oakington)

The property comprises a ground floor open plan office suite within an attractive converted granary. The office benefits from gas fired central heating, ample car parking, bicycle parking, kitchen, WC and showering facilities.



The village of Westwick (near Oakington) is situated approximately 3 miles to the northwest of Cambridge and only 2 miles from the A14 and M11. The Guided Busway, connecting Huntingdon, St Ives and Cambridge, is approximately 150 metres away.

Mains electricity, gas and water are available to the premises.



For more information please contact us:

01223 644210

[Rebecca.Haylett@OpenArch.co.uk](mailto:Rebecca.Haylett@OpenArch.co.uk)

[www.openarch.co.uk](http://www.openarch.co.uk)

# MISCELLANY

## Answers to Selwyn's Alphanumeric Quiz on page 8

1	366	D in a L Y	366 Days in a Leap Year
2	18	H on a G C	18 Holes on a Golf Course
3	6	of O. H a D of the O	6 of One. Half a Dozen of the Other.
4	20000	L U the S	20000 Leagues Under the Sea.
5	617	The D B S	617 The Dam Busters Squadron
6	4	W and a F	4 Weddings and a Funeral
7	10	G B H on the W	10 Green Bottles Hanging on the Wall
8	1966	E W the W C	1966 England Won the World Cup
9	36	I in a Y	36 Inches in a Yard
10	30	F B D in the N L	30 First Ball Drawn in the National Lottery



## REED KITCHENS & BATHROOMS

DESIGN TO INSTALLATION  
THE COMPLETE SERVICE

We are a local established company since 1994 that manufactures a range of top quality kitchens and offers them direct to you, at an upfront price that includes everything from design to full installation. It also includes your choice of top range appliances from the likes of NEFF and Bosch.

Makeover your kitchen using our door and worktop replacement service.

Call for a free Brochure






COMPUTER AIDED DESIGN SERVICE



DOMESTIC INSTALLER



www.kbbi.org.uk  
Institute of Kitchen, Bathroom & Bedroom Installers



KITCHENS



BATHROOMS



BEDROOMS

Tel: 01954 232899 Mobile: 07711 696015

For more details visit: [www.kitchenscambridge.com](http://www.kitchenscambridge.com)  
email: [glenn@kitchenscambridge.com](mailto:glenn@kitchenscambridge.com)

## Swavesey-based World Champion

Currently the UK doesn't have many resident world champions in any sport but Swavesey has its own world champion living in Whitegate Close. On 5 January this year Dave Tiplady became the world seniors ping pong hardbat champion.

Ping pong was invented in the early 1900s but its name was changed to table tennis in 1921. Essentially ping pong and table tennis are the same game, the difference being mainly one of perception. Thus, table tennis is an Olympic sport but ping pong is mostly regarded as a recreational activity. So, is ping pong conducted at a gentler pace? No, it jolly well isn't.

During his working life Dave was an electrician with Eastern Electricity and its various successors. He was born in Cambridge then moved to Swavesey in 1998, having started to play the game when he was about 10 years old and has been playing now for around 60 years, after taking it up more earnestly again in his late 50s. Nowadays he plays four or five times a week, mostly in St Neots or in Cambridge. There are tournaments going on throughout much of the year with Dave playing county matches for Cambridgeshire mainly until the end of March.

Until recent years the ping pong world cup was promoted by Barry Hearne at the Alexandra Palace along with other sporting events including darts, snooker and boxing. This year, and for at least the next two years the "Mecano Sports Ping Pong World Cup" was held in Mexico. Because of its increasing popularity the event was live streamed on YouTube. It is now a major sporting event and several European countries would like to host it themselves in due course because of the publicity and prestige it brings.

There were 21 countries taking part in Mexico this year with many from Europe. Each contestant had to qualify in their home country and 8 of the eventual participants were from England, Scotland or Ireland. China has an impressive history of success at ping pong competitions and the top two Chinese players were there.

The tournament was held in Mexico City which lies at an altitude of 2,300 metres – 7,550 feet and much higher than Ben Nevis at 4,413 feet. At this altitude the air is thinner than in the UK and consequently the ball flies faster. Dave competes in the "hard bat" section and in the "Seniors" group which means over the age of 55 years. He entered the event as No 3 Seed and had a tough journey on the way to victory. In the quarter finals he beat an American player then in the semi-finals he beat the No 2 Seed from Denmark. In the final he was up against the No 1 Seed, Alexei Perez from the Dominican Republic, but who lives and trains in the USA and who is a very popular sportsman there.

Dave was too athletic and quick for Perez and brought the title of World Champion back to the UK and Swavesey. In 2025 he will be expected back in Mexico to defend his title.

The match can be watch at:- [www.youtube.com/watch?v=pZ627B4y8w0](http://www.youtube.com/watch?v=pZ627B4y8w0)

## Swavesey 100 Years ago (April & May 1924) From the Cambridge Chronicle

### ADVERT. 4th April 1924

Wallpapers, from 3d. per roll. Digging Forks, 3s. 9d. Ely Hoes, 5in. to 8in. Good Paint, mixed any colour to order. – Prior's Stores.

### CAMPA NOLOGY. 11th April 1924

A plain Bob peal of 720 changes was rung on the bells of the parish church before the morning service on Sunday by the following: 1 Mr. F. Huckle (Willingham), 2 Mr. B. Hodson (Swavesey), 3 Mr. F. Gleaves (Willingham), 4 Mr. E. Williams (Swavesey), 5 Mr. F. Warrington (Longstanton), tenor, Mr. F. Hemington (Swavesey). Mr. Warrington was the conductor.

### EGGS FOR ADDENBROOKE'S. 18th April 1924

In response to the appeal of the Secretary-Superintendent, 1,304 eggs have been collected in Swavesey for the use of Addenbrooke's Hospital. Taking the figures of the 1921 Census, this represents, roughly speaking, an egg and a half from each inhabitant, or five eggs from every house in the parish. The gift has been gratefully acknowledged by the Hospital authorities.

### SUMMERTIME. 18th April 1924

It is credibly reported that certain persons in Swavesey, misled probably by the snowstorm early in the day, put back their clocks and watches on Saturday night, instead of advancing them by an hour, and in consequence of these mishaps on Sunday morning a member of the congregation of one of the places of worship in the village, who is conspicuous by the regularity of his attendance, arrived at the end of the service, while another parishioner took the family dinner to the bakehouse two hours after time.

### WATER RISING. 2nd May 1924

Yesterday (Thursday) morning water was rising rapidly around Swavesey. The River Ouse and the drains were full, and, if more rain fell, there was every prospect of a flood.

### "SPRING'S HARBINGER." 2nd May 1924

A correspondent writes: The writer of the Bourn local paragraph in last Friday's "Independent Press" may be interested to know that the cuckoo was heard in various parts of Swavesey parish at least three weeks ago. One bird, when seen in the neighbourhood of The Manor, near the Railway Station, was being driven away by crows and jackdaws.

### A RUNAWAY. 2nd May 1924

A runaway horse and cart caused excitement at Boxworth End last week. Startled, it is said, by a traction engine, the animal bolted, knocking down

the youth who was in charge, and then partly demolishing the wall in front of the house occupied by the Pastor of the Particular Baptist Chapel. Continuing its mad career, the horse turned, or was turned, along the Ramper Road, just missing Mr. Robinson Mitham, who flattened himself against a high fence he was erecting, and upsetting his assistant, Mr. Charles Hepher, who, however, was not hurt, though a tool in his hand was smashed. The horse dragging the cart now "untumbrilled," raced along the road towards Longstanton with men in pursuit, but at the second turning ran into a ditch and was captured. The youth with the cart had a marvellous escape, for when he was knocked down he fell between the wheels, neither of which touched him. His face was cut slightly, and he was shaken and bruised.

### HORTICULTURAL SHOW. 23rd May 1924

Arrangements for this year's show, which is to be held on August 7th, were discussed at a well-attended meeting of the Swavesey and District Horticultural Society on Friday evening, and it was decided to again engage the Cambridge G.E.R. Band, and to have refreshments and amusements carried out by independent firms of caterers and amusement providers. Members were reminded that their annual subscriptions should be paid to the treasurer, Mr. G. J. Paine.

Chris Richardson

## ALAN'S CARPETS

### Carpets and Vinyl Supplied and Fitted

We have been in the carpet trade  
for over 47 Years!

Samples To Your Home

Measure

Quote

Express delivery & fitting included

Phone 07790 681317

or

07790 544250

## CHIMNEY SWEEP

### J. L. Wight

City & Guilds Qualified

Advice given /  
Problems solved



Certificates issued

Fully Insured

HETAS registered



01954 253315

www.camsweep.co.uk  
26 Cow Lane, Rampton

# FDS

(CAMBRIDGE) LTD

01353 779754

fdssales@outlook.com

www.fdscambridgeltd.co.uk



GRAB/TIPPER HIRE



AGGREGATE SUPPLIES



PLANT HIRE

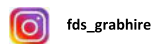
PRIVATE AND TRADE WELCOME

**SOILS – SANDS – GRAVELS – SLEEPERS**

**HARDCORE – DIGGERS – DUMPERS**

**WOODCHIP – LOGS**

**CALL US ON 01353 779754 or 07921 777550**



# Compass Café

“Encompasses the community”

All are welcome on Thursdays  
10:30am until 12 noon  
At Bethel Baptist Church



Our cakes are home-made,  
our coffee and sugar are Fairtrade,  
our tea bags are plastic-free.



Priced to be affordable:  
Tea/coffee/hot chocolate £1 per mug  
and Cakes £1.50 per large slice  
Squash is free

Please use the side door to enter, the far side door has a ramp for wheelchair users and pushchairs, and there is a carpet and toys for pre-school age customers.

Compass Café is run as a community event, a place to meet and chat. Your hosts are a group from one of:  
Bethel Baptist Church, Girlguiding Units in Swavesey,  
Swavesey Primary School PTA, St Andrew's Church  
and Swavesey Women's Institute.

When there is a 5th Thursday in the month other groups are invited to run the café to fundraise.

Please get in touch with Sue Ellington  
if you would like to know more.  
sue.ellington@virgin.net or phone 01954 202923  
29th Aug (school hols) and 31st Oct (half term)

## HIDDEN BEAUTY

BY REBECCA



NAILS | LASHES | WAXING | MASSAGE

Home based salon offering a range of professional beauty treatments. Whether it's a relaxing, stress relieving massage A facial using vegan & cruelty-free Husk & seed products fabulous eye lash extensions or a pampering manicure or pedicure

Hidden Beauty is here for you.

Gift vouchers available

07815 443009  
BECCASTART@HOTMAIL.COM  
f HIDDENBEAUTYBYREBECCA



## An update from Fen Drayton Lakes

The humble seagull, a study in greyscale, is the characteristic sound of the seaside. Whilst not at the top of the list of favourite birds for many, the more you get to know about them, the more fascinating they turn out to be.

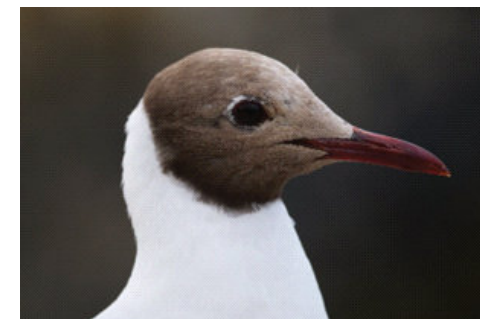
At Fen Drayton Lakes, gulls form a large part of the bird community year-round, and several different species can regularly be seen here. From spring onwards, the breeding birds appear and take up residence on the islands and rafts that are out on the lakes. These are sociable birds that nest at close quarters with each other, but they'll squabble if a neighbouring bird gets within nibbling range.

The main species that nests at the reserve is the Black-headed Gull, a small member of the family with a confusingly brown head in summer. Numbers have reached as high as 600 nesting pairs, but the last year or two has been very tough on them as a wave of highly pathogenic bird-flu has arrived and affected many. However, against all odds some pairs managed to produce young in 2023.

The quantity of gulls increases in late summer when the youngsters join the adults out on the water and learn how to feed. The flush of insect life at this time of year encourages many of them to fly high and pluck the insects out of the air in a surprisingly nimble fashion.

Most gulls undertake large migrations and many of the Black-headed Gulls wintering in the area have come all the way from countries such as Poland, Norway and Finland, a journey they undertake each year.

A feature of the birders' calendar at the reserve are the winter gull roosts when thousands of individuals come into the lakes. It takes a dedicated person to head



Black-headed Gull close-up – Henry Cook

out in the often cold, rainy, and windy conditions to stand for a couple of hours before dark to see what is arriving. The excitement factor is in not knowing what species may turn up. There are some rare species that come down from the arctic in winter, such as the Iceland Gull, a bird that has a strikingly pale plumage which earns it the moniker of 'white-winger'.

Why not come down to the reserve to enjoy these charismatic birds yourself?

**Dawn Chorus**

Be an early bird and join us for a dawn chorus walk on 27th April. Learn about the many different birds that sing at the peak of spring.

**Wednesday Wander**

Ever thought you'd like to know more about the reserve and its wildlife? Volunteer-led guided walks take place once a month, usually on the second Wednesday.

To see details and book for these events, please visit:-

[events.rspb.org.uk/fendraytonlakes](https://events.rspb.org.uk/fendraytonlakes)

**Email:** [fendraytonlakes@rspb.org.uk](mailto:fendraytonlakes@rspb.org.uk)

**Phone:** 01954 233260

Visit [rspb.org.uk/days-out/reserves/fen-drayton-lakes](https://rspb.org.uk/days-out/reserves/fen-drayton-lakes)  
The Royal Society for the Protection of Birds (RSPB) is a registered charity: England and Wales no. 207076, Scotland no. SC037654

## Quality Bespoke Secure Storage

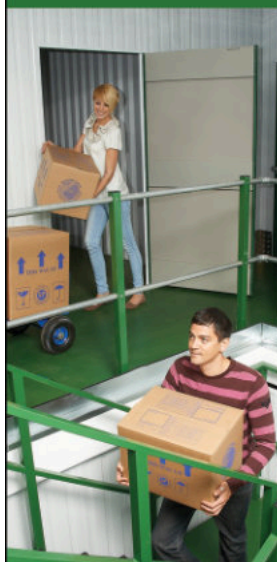
### Space for all your storage needs

Easy to open & fast to access. High security with PIN codes, HD CCTV cameras & individual room alarms. Choose as little or as much space as you really need, for any length of stay, with no long term commitment. Clean, dry, ventilated & condensation free. Friendly & helpful service with packaging available. Open to customers everyday from 7am to 9pm. Viewings arranged by appointment.

**MoreSpace**

• Home • Document • Commercial

Located at Manor Farm, Graveley, PE19 6PH. Mention SMM22 to receive £5 discount on your first month of storage room rental.



[www.morespacestorage.co.uk](https://www.morespacestorage.co.uk)

Call 01480 830130

## SWAVESEY LIBRARY

is your local voluntary run community library.



**Swavesey library can be found in the Old Entrance Hall, Swavesey Village College. Its entrance is at the righthand side of the Gibraltar Lane car park. Just follow the library signs.**

We can provide you with the majority of the services you may find in the larger town libraries right on your doorstep, such as - a large range of adult fiction, autobiographies and large print books, Children's – early readers to young adult books; plus internet access and local information.

In addition, with our links to the Cambridgeshire County Council Library Service you can order books from most Cambridgeshire libraries for collection at Swavesey.

All you need to be is a member of the Cambridgeshire Library service to borrow our books (and those from other Cambridgeshire Libraries), and if you're not, then we can soon enrol you and your family.

We also stock numerous second-hand books for sale – only 50p each and hold regular children's activity events.  
So why not pop along today.

**We are open: -**

**Tuesday afternoons 3.30pm -5.30pm,**

**Wednesday evenings 5pm – 7pm and**

**Saturday mornings 10 – 12 noon.**

For further information; - see our website:-

<http://www.swavesey.org.uk/community/swavesey-your-library/>

Facebook at Swavesey Village Life or contact

Richard at [Richard94.hart@virgin.net](mailto:Richard94.hart@virgin.net) / 01954 202707 or

Doug at [Doughuntuk@yahoo.co.uk](mailto:Doughuntuk@yahoo.co.uk) / 01954 232478.

## It Will Probably Be Cloudy...

A guide to the night sky over Swavesey during April and May.

Comet 12P/Pons–Brooks has the potential to be visible to the naked-eye before perihelion (closest approach to the sun) on 21<sup>st</sup> April 2024 for northern hemisphere viewers. It is a periodic comet (a comet that has an orbit around the sun less than 200 years) discovered by Jean-Louis Pons in 1812 and then recovered by William Robert Brooks in 1883. It orbits the sun every 71 years.

This will likely lose out in brightness to comet C/2023 A3 Tsuchinshan–ATLAS which should be visible to the naked eye in September/October and has the potential to reach magnitude -0.9. If so, in terms of brightness that would bring it close to Sirius (magnitude -1.44), the brightest star in the night sky.

The Lyrid meteor shower will be visible from 14<sup>th</sup> – 30<sup>th</sup> April, peaking on the 22<sup>nd</sup> – 23<sup>rd</sup> April. It is the oldest recorded meteor shower still visible today and was first recorded in 687 BCE. This year, the shower comes to a maximum at full Moon, so moonlight will affect viewing conditions.

The full moon on 6th April was known by early Native American tribes as the Pink Moon because it marked the appearance of the moss pink, or wild ground phlox, which is one of the first spring flowers. This moon has also been known as the Sprouting Grass Moon, the Growing Moon, and the Egg Moon. Many coastal tribes called it the Fish Moon because this was the time that the shad swam upstream to spawn.

The Eta Aquariid meteor shower is active from 19<sup>th</sup> April to 28<sup>th</sup> May, peaking around 6<sup>th</sup> May and expecting to produce up to 50 meteors per hour. The source of the meteor shower is the famous Comet Halley, which is visible from the Earth every 75-76 years. The nearly new moon means dark skies for what should be an excellent show this year.

May provides the opportunity to see Earthshine. This is a dull glow which lights up the unlit part of the Moon because the Sun's light reflects off the Earth's surface and back onto the Moon. The best times are the morning of 5<sup>th</sup> and 6<sup>th</sup> May just before sunrise and the evenings of 11<sup>th</sup> and 12<sup>th</sup> May just after sunset.

The May full moon, on 23<sup>rd</sup> May, was known by early Native American tribes as the Flower Moon because this was the time of year when spring flowers appeared in abundance. This moon has also been known as the Hare Moon, the Corn Planting Moon and the Milk Moon.

Chris & Helen Nunn

## Doctors Surgeries

### Swavesey Surgery

(01954) 230202  
Out of hours 111

Website:- [www.swaveseyurgery.nhs.uk](http://www.swaveseyurgery.nhs.uk)  
Information & updates on facebook page

### Over Surgery

(01954) 231550  
Out of hours 111

Website:- [www.oversurgery.nhs.uk](http://www.oversurgery.nhs.uk)  
Information & updates on facebook page

### Longstanton

(01954) 207600  
Out of hours 111

Website:- [www.willinghammedicalpractice.nhs.uk](http://www.willinghammedicalpractice.nhs.uk)

See our website at [www.swaveseymeridian.org.uk](http://www.swaveseymeridian.org.uk)  
for the full and latest surgery newsletters. Ed

### Bar Hill Surgery

(01954) 780442

Out of hours (01954) 780442 -  
*call will automatically be diverted*  
Website:- [www.maplebarhill.co.uk](http://www.maplebarhill.co.uk)

### Fenstanton

7E High Street, Fenstanton  
01480 461873

Out of hours 111

Website:- [www.riverportmedicalpractice.co.uk](http://www.riverportmedicalpractice.co.uk)



## Swavesey Warden Scheme

### Community Warden

### Service Overview

- Flexible Assistance to meet individual needs to remain living independently at home. Providing reassuring daily contact (Mon-Fri) either in person or by telephone call.
- Support with small practical tasks to ensure a sense of security and wellbeing.
- Free 2 weeks trial.



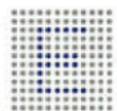
How did I cope before? Bits of shopping, sorting my post, watering plants, filling my bird feeder and bringing me a cup of tea...wonderful.



### Contact Us

Email: [wardens@ageukcap.org.uk](mailto:wardens@ageukcap.org.uk)

Tel: 07436 102 736



**ENTIRE**  
GROUP



300007



The Complete Gas Heating and Plumbing Company

Plumbing • Heating • Gas  
Bathrooms • Water Softeners  
Property Maintenance

Tel: 01954 204044 • Web: [www.entiregroup.co.uk](http://www.entiregroup.co.uk)  
Email: [service@entiregroup.co.uk](mailto:service@entiregroup.co.uk)

## SCHOOLS INFORMATION



### Rainbows, Brownies, Guides and Rangers

#### Spring Term Activities

This Spring Term there are 102 girls spread across the five units, and us leaders have great fun watching them grow and develop and have lots of fun, it is a huge pleasure being a leader in Girlguiding. A new term sees girls who are old enough moving sections with new girls in all the units and they are all settling in well.

1st Swavesey Rainbows have taken part in the Snow and Ice, and Pancake challenge badges. With our meeting falling on 29th Feb, we just had to do the Leap Year challenge too! We celebrated World Thinking Day with some Unit Meeting Activities finding out about WAGGGS and the World Centres. Our Skills Builder badge, Reflect, is about values and what is important to us, and looking at similarities and differences, but we can all live together. We have awarded 2 Rainbow Bronze awards.

1st Swavesey Brownies have taken part in a Thinking Day Card Swap, with the Brownies creating their own cards and messages. These were posted to 24 Brownie groups across the United Kingdom who will send a card in return. The girls will get to open these after the Easter holidays and see where their cards came from! The girls chose to work on their Get Messy challenge badge and chose the activities they'd like to do for it. So far, they have made suncatchers with glitter and glue, with chocolate mud pies and bath bomb making planned for next term.

2nd Swavesey Brownies have been busy this term learning more about our local community. We have packed food parcels on a trip to St Ives Foodbank as part of our Charities badge, and had visits from the parish council (who explained more about local democracy) and the Quantum Quilters who helped us design and sew our own quilt. As a new unit we are still finding our feet and Swavesey Parish Council have also given us a grant to enable us to support us offering more adventures to girls. This term we have awarded our first three Brownie Bronze Awards and welcomed a new Brownie whilst having lots of fun with crafts and games.

1st Swavesey Guides started their Spring programme with a Peer Educator run session about personal safety and consent. We leapt straight into our Thinking Day activities, having chosen to think about Girl Scouts of the USA. We are in contact with a Junior troop in Missouri and learned about their promise and law, their uniform, badges and swaps. We sent them the challenge syllabus for 1st Swavesey Rainbows Hedgehog Challenge to show

some of the fun badges we do. Two Guides planned and ran a Pancake Day. Nutella, strawberries and squirty cream were very popular toppings. The second half of the term concentrated on programme activities of the Explore theme. We ended the term with our postponed chip walk.

1st Swavesey Rangers started the term with their planning session, involving leadership activities and some snacks. Their next session was led by a Peer Educator all about personal safety and harassment. They had many important and sometimes difficult conversations, so finished the session by making a paper chain of people they could turn to for support. In our final meeting before half term, the Rangers completed an activity about supporting each other for the Live Smart Skills Builder. They then spent the rest of the meeting making hama bead emojis and characters for a challenge badge about computers and coding.

Our units are full with waiting lists, sign your daughters up early for Rainbows, don't wait until she is 5 and her friends have started! [www.girlguiding.org.uk/joinus](http://www.girlguiding.org.uk/joinus)

**Adult volunteers are needed,**  
**please get in touch if you think you can help or would like to know more.**  
[www.girlguiding.org.uk/get-involved/become-a-volunteer/register-your-interest/](http://www.girlguiding.org.uk/get-involved/become-a-volunteer/register-your-interest/)

The advertisement for HOCKEYS features the company logo at the top, which includes the name 'HOCKEYS' in a green serif font, 'ESTABLISHED 1885' in a smaller font, and a red square icon with a white grid pattern. Below the logo, the text reads: 'Thinking of a move? We are happy to offer you a free, no obligation valuation of your property.' The advertisement is supported by two photographs of HOCKEYS storefronts. The left photo shows a storefront with a red and white facade and a sign that says 'HOCKEYS'. The right photo shows a storefront with a red and white facade and a sign that says 'HOCKEYS'. Below the photographs, there are two red boxes with white text. The left box says: 'Call our Cambridge office for a free valuation (01223) 356054'. The right box says: 'Call our Willingham office for a free valuation (01954) 260940'.



# INDUSTRY LEADING CAR DETAILING

## MOBILE SERVICES BASED IN CAMBRIDGESHIRE

Experience a professional service from a highly trained team of car enthusiasts. We are the industry leading choice for detailing services in the Cambridgeshire area.



### Our Services

- ✓ Maintenance Details
- ✓ Luxury Details
- ✓ Exterior & Interior Protection
- ✓ Ceramic Coating
- ✓ Swirl and Scratch Removal
- ✓ Staged Polishing
- ✓ Gloss Restoration
- ✓ New Car Protection

Contact us today

07307 367570

07307 367570



detailedauto.co.uk

info@etailedauto.co.uk



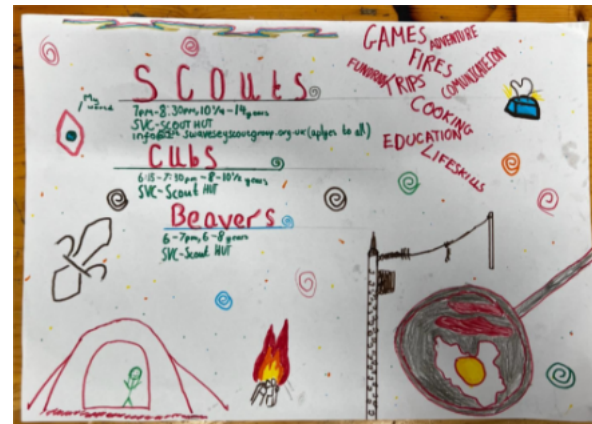
## 1st Swavesey Scout Group

This Winter term has mainly been about doing sessions in the hut. As you can see from this photo the Beavers have been making paper dragons for the Chinese Lunar New Year.



The scouts on Valentine's evening made Chocolate Truffles (as you can see above). On pancake night the Cubs made gluten free Okonomiyaki aka Japanese Cabbage pancakes. This was to expose them to traditions elsewhere in the world.

Looking forward to next term all the group will be taking part in the district St George's Day parade. Also, next term we will be having our group camp.



Finally, the scouts have been doing recruitment posters for our group. This one I think sums up what we try to do as a scout group. Please get in touch with the relevant leader if you wish them to join the waiting list.

It's never too early to get your child on the Beavers waiting list. Please email John to add your child. There is space in cubs and scout for your child to start right now.

Beavers (ages 6-8) [john.pawson@1stswaveseyscoutgroup.org.uk](mailto:john.pawson@1stswaveseyscoutgroup.org.uk)

Cubs (ages 8-10½) [steven.wilson@1stswaveseyscoutgroup.org.uk](mailto:steven.wilson@1stswaveseyscoutgroup.org.uk)

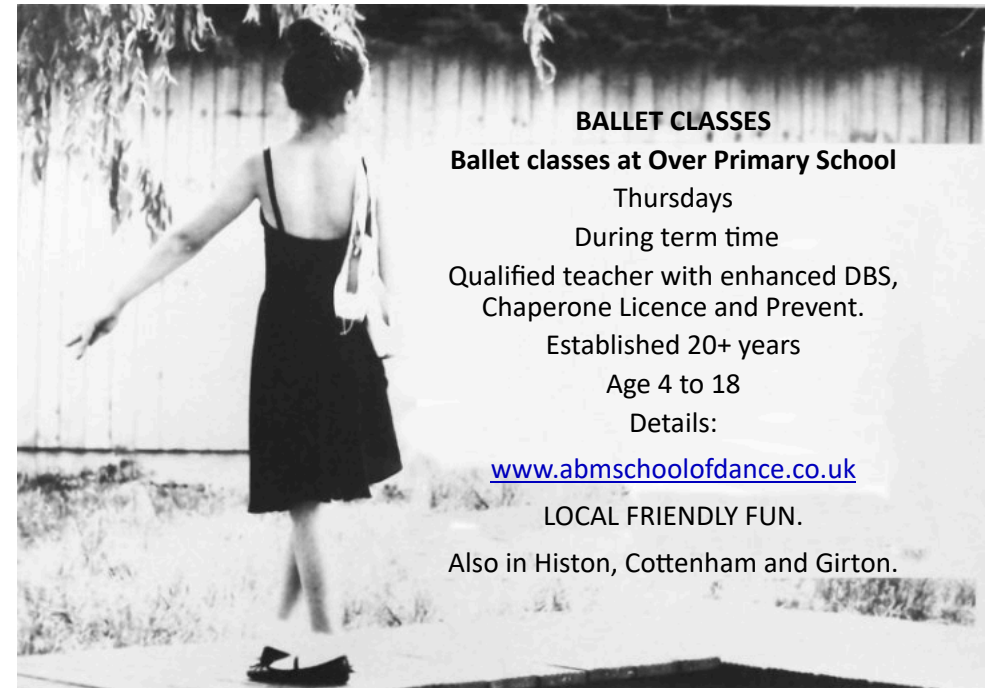
Scouts (ages 10½ -14) [marian.bentley@1stswaveseyscoutgroup.org.uk](mailto:marian.bentley@1stswaveseyscoutgroup.org.uk)

**Swavesey Primary School Early Years and Playwork Centre**  
**Wraparound Care and Early Years Provision - Mon to Fri - term-time**  
 Registration Fee £15 per family for using Breakfast and/or After School Club

**Breakfast Club 7.30 am - 8.55 am**  
 3+ year olds to Year 6 children: £6 per child per session

**After School Club 3.15 pm to 6.00 pm**  
 For Reception to Year 6 children: £12 per child, family rate £11 per child

**Early Years 9.00 am to 3.00 pm (full day) or morning (9-12/1) or afternoon (12-3)**  
 For 2½ year olds to 4 year olds  
 Places for funded children up to 30 hours per week  
 Charged sessions:-  
 3+ year olds £15 half-day and £30 full-day.  
 2 years and 6 months £17 am only  
 £5 for lunch hour (12-1)  
 For more information and to register:-  
[www.swavesey.cambs.sch.uk](http://www.swavesey.cambs.sch.uk) (Select EY & P)



**BALLET CLASSES**  
**Ballet classes at Over Primary School**  
 Thursdays  
 During term time  
 Qualified teacher with enhanced DBS, Chaperone Licence and Prevent.  
 Established 20+ years  
 Age 4 to 18  
 Details:  
[www.abmschoolofdance.co.uk](http://www.abmschoolofdance.co.uk)  
 LOCAL FRIENDLY FUN.  
 Also in Histon, Cottenham and Girton.

9.30 am – 10.15 am  
 Music Theory classes for ALL

10.15 am – 11.00 am  
 Little Rockets for 3-9 yrs  
 Join the Band & Find your voice!

11:00 am – 12:00 pm  
 The BIG Rock School for  
 Drummers, vocalists or guitarists  
 with some experience or have  
 been playing for some time aged  
 10 yrs+

10.15 am – 11:00 am  
 The BIG Sing!  
 (aka Choir/Sing up – 7 – 77yrs! ALL AGES)

11am – 12pm  
 The BIG Orchestra!  
 An opportunity for children,  
 parents, adults & community in  
 an orchestra together.  
 Everyone welcome... beginners  
 to experienced players!

**Swavesey Music School**  
 admin@swaveseymusic.co.uk  
 Swavesey Village College CB24 4RS

**LANGLEY & Co.**  
**Accountants**

**Are you paying too much tax?**  
**Are you claiming all your business expenses?**  
**Do you need help with your accounting and taxation affairs?**

We provide a complete range of accounting and taxation services including:

- ◆ Accounts preparation for sole traders, partnerships and small businesses including limited companies
  - ◆ Self assessment preparation and online filing
  - ◆ Bookkeeping including payroll, CIS and VAT
- ◆ Taxation advice
- ◆ Business start-ups
- ◆ Business planning
- ◆ Pension reviews

For a friendly and competitively priced service from local accountants please contact Doug Langley at:

Unit C1, 2 Station Road, Swavesey, CB24 4QJ  
 Tel: 01954 231249 Email:doug@langleyaccountants.co.uk

# PARISH & COUNTY NEWS

## From Your DC - Sue Ellington

Well, Spring is definitely on its way- I saw my first daffodils in early February and nature is very busy doing it's thing. South Cambs District Council is also gearing up for the future by looking at the budget for the coming year. It is good to report that SCDC is in relatively good financial state in comparison with many other councils but the administration are concerned that the Government is planning the introduction of a Fair Funding Review in 2026 which may push a lot of Government funding towards County and Unitary Authorities. So the revenue from The New Homes Bonus which pays the council for new homes, and from The Cambridgeshire Business Rate Pool which pays the council for additional businesses in South Cambs, in addition to raising the Council Tax, will help to build reserves for potential cuts in 2026.

The Council continues with the four day week trial against the The Dept. of Levelling Up instructions so they are providing all the statistical information required on a weekly basis. The information has finally been made available which has led to questions around the use and cost of agency staff and the predicted saving or cost of this. I am hoping that the council will produce these figures and allow the elected members of the council to vote on whether this trial should continue.

Just a little bit of history to conclude. The District Council is celebrating 50 years on March 20th 2024, but some of you will remember it was created from Chesterton Rural District Council in 1974. But do you remember that the Councillor for Swavesey and Fen Drayton was my father, Frank Spicer. In 1976 the boundaries were changed to make Swavesey a single village ward and John Shepperson took over the role until I was elected in 2006. I have loved being your councillor, thank you for electing me.

So the future looks a little brighter and we will see how it works out in 2024.

Please feel free to contact me if I can help with any district council issues.

[cllr.Ellington@scambs.gov.uk](mailto:cllr.Ellington@scambs.gov.uk) 01954 202923, or 07774146331

Sue Ellington - District Councillor Swavesey Ward.

## Volunteer Cambs

This is a brand new website matching potential volunteers with organisations.

The development of the new website allows those organisations to showcase volunteering opportunities in one place, and answers the questions that any prospective volunteer wants to know about the time commitment, location and the skills and interests needed to get the most out of the role. It's a great opportunity for local people to match their precious time to local good causes.

Website:- [www.volunteercambs.org.uk/](http://www.volunteercambs.org.uk/)

<b>Swavesey Parish Council</b>		<b>Website: <a href="http://www.swavesey.org.uk">www.swavesey.org.uk</a></b>
<b>Parish Councillors</b>	<b>Telephone (01954)</b>	<b>E-mail address</b>
Doug Hunt (Chairman)	232478	dhunt@swavesey.org.uk
Sandie Smith (Vice-Chairman)	07806 709939	ssmith@swavesey.org.uk
James Dodson	230560	jdodson@swavesey.org.uk
Colin Parsons	230861	cparsons@swavesey.org.uk
Martin Johnston	200605	mjohnston@swavesey.org.uk
Warren Wright	203172	wwright@swavesey.org.uk
Jonathan Kerley	231304	jkerley@swavesey.org.uk
Rachel Vollerthun	07312 102526	rvollerthun@swavesey.org.uk
Sue Ellington	202923 / 07774 146331	sellington@swavesey.org.uk
Sue Rogers	0777 224 7673	srogers@swavesey.org.uk
Mandy Smith	230248	msmith@swavesey.org.uk
<b>Clerk:</b> Linda Miller	202982	clerk@swavesey.org.uk
<b>District Councillor:</b> Sue Ellington	202923 / 07774 146331	cllr.ellington@scambs.gov.uk
<b>County Councillor:</b> Mandy Smith Papworth & Swavesey Ward	230248	mandy.smith@cambridgeshire.gov.uk
<b>Memorial Hall Administrator:</b> Nicole Mullee	07963 861791	memorialhall@swavesey.org.uk
Swavesey Parish Council meets on the 2nd Thursday of each month for Planning items and on the 4th Monday of each month for Full Council. All meetings are held in the Memorial Hall at 7.30pm. There is always a 10 minute public forum at the start of the meeting.		

## Swavesey Annual Parish Meeting Weds 10<sup>th</sup> April 2024 7.30pm, Swavesey Memorial Hall

A presentation on the flood risk to and flood prevention measures in place around Swavesey Parish

A discussion on climate change, sustainability and biodiversity around the village

Also your opportunity to receive reports from and ask questions of the Parish Council, village charities, other village organisations and your County and District Councillors

Please do come along to the meeting to learn more about your village

**Swavesey Parish Council**  
[www.swavesey.org.uk](http://www.swavesey.org.uk)

# SWAVESEY PARISH

## Parish Council News November/December 2024

### County Council Business

Highways maintenance: The yellow line refreshing outside of the Primary School entrance has been chased up, as has surface water gully cleaning on gullies which are still blocked along Boxworth End and in the layby by the Recreation Green.

We have also highlighted the overflowing ditch at the end of Boxworth End which floods across the road and have been informed that work has been ordered to address this.

Weed removal: during 2023 CCC stopped using chemical weed control along highways and pavements, however no other form of weed control was put in place. This led to a huge amount of weed growth and complaints. Having reviewed this CCC will reinstate chemical weed control as the most effective method.

Traffic Calming Projects: In January a funding application was submitted to CCC for traffic calming measures along sections of Station Rd & Over Rd. We now await a feasibility study on what might be provided. Once received further community consultation will take place. The decision on funding will not be made until around May/June.

Currently second applications for 20mph zones are being invited, closing on 15th March. The Parish Council intends to resubmit its application. We will not know the results of this until summer this year.

Boxworth End-Ramper Rd – the PC is reviewing draft option plans from CCC for traffic calming measures for these two roads, from funding received from the Northstowe developers.

We anticipate holding community consultation events for all of these around May/June.

### Civil Parking Enforcement (CPE)

Came into force on 1st Feb and the village has already seen Warden visits re illegal parking. Incidents and Warden visit requests can be made to the CPE Team: [southcambsparkingenforcement@cambridgeshire.gov.uk](mailto:southcambsparkingenforcement@cambridgeshire.gov.uk)

Parking fines will be issued to those vehicles which are parked illegally on yellow lines or other restricted areas. The PC is receiving comments about illegal

# COUNCIL NEWS

parking around Market Street and along School Lane, Middle Watch and High St. Please think of others and be considerate when parking your vehicle.

### Finance

The Parish Council set its budget at the January Full Council Meeting and no increase to the Parish part of the Council Tax will be made, it will remain at the 2023/24 rate.

### Drainage

During this very wet start to 2024 we wish to thank the members of the Swavesey IDB who have been monitoring the water levels and surveying the riverbank, as we experience prolonged flooding in the fens around the village. They met with the Environment Agency Flood Risk Manager for the Gt Ouse catchment area in late January and walked the riverbank to show the effect of river overtopping the bank. The Parish Council also wrote to the Secretary of State at DEFRA and Shadow Secretary to highlight flood risk concerns.

We still have no information on the drainage issues under Burgess Close and whether the foul and surface water drains will have to be replaced, we continue to chase for an update. The junction works with Boxworth End were installed during February.

### Village Projects & Maintenance

We were really pleased to receive a grant from the PECT 30for30 fund for creating sustainable places. This will be used to purchase gardening tools and equipment which the volunteers who help to maintain the community garden spaces around the village will be able to use.

### Annual Parish Meeting

Will be on Weds 10th April, 7.30pm in the Memorial Hall. Your opportunity to hear reports from many village organisations and updates from the Parish Council. We look forward to seeing you there.

Please visit our website at [www.swavesey.org.uk](http://www.swavesey.org.uk) for more information on the above and to read copies of the Council Meeting Minutes.



**SACRED HEART OF JESUS**  
**Roman-Catholic Parish**  
 19 Needingworth Road, St Ives, Cambs. PE27 5JT

**Parish Priest: Rev ThomasJ Walton**

Tel: 01480 462 192  
 www.sacredheart-stives.org.uk  
 email: office@sacredheart-stives.org.uk

Mass Times:  
 Saturday 17.00 (Anticipatory)  
 Sunday 09.00 and 11.00

**CHIROPODIST/  
 PODIATRIST**

I can offer a professional service

For further details please ring  
**01954 201256**  
**07494 196065**

Biomechanical assessments &  
 orthotic therapy also available.

*Michelle Dolan*  
 HCPC Registered Chiropodist/Podiatrist  
 CH34864

*e-mail: michelledolan@outlook.com*

St Andrew's Church, Swavesey

**Plant Sale**  
 Saturday, May 18th  
 10-4pm

Children's  
 Activities



Shrubs,  
 flower and  
 vegetable  
 plants for  
 sale

Refreshments  
 available all day

**Free Entry**

**Paying too much for your glasses?**

**Save Money - Buy Direct!**

Visit our factory shop to see our fabulous  
 range of Discount Prescription Eyewear

- Hundreds of frames to choose from, including designer frames from Ray-Ban, Polo Ralph Lauren, Oakley, PRADA, Ted Baker and Versace
- Specialists in high and complex prescriptions
- Same-day or next-day service available\*
- Save up to 75%
- Huge range of designer sunglasses
- Full range of sports eyewear



Official stockists

\*subject to prescription and availability



**We are open 9am to 5pm Monday to Friday, and 9am to 1pm Saturday**



Call us **01954 231545** Visit our website **www.all-eyes.co.uk**  
 20 Norman Way Industrial Park, Over, Cambridge CB24 5QE



## St Andrew's Church

### 5folds Benefice News

We are sorry to bring you the news that due to his continuing ill health, the Rev'd Simon Gill resigned on December 31st. The 5Folds Benefice is sorry to see Sallie and Simon go, and wish them all the best in the future. The Rev'd Jenny Hill and Canon Jan Payne are continuing to look after us whilst the process of appointing a new Team Rector takes place.

As before, this means that we are unable to predict exactly what our pattern of services will be from week to week but you can always find information about our weekly services on Facebook and online at A Church near You:-

<https://www.achurchnearyou.com/church/2834/service-and-events/events-all/>

### Services at St Andrew's

You are always welcome to join us at 11am on Sunday mornings. We usually hold communion services on the first three Sundays in the month and a more relaxed service of Morning Praise on the fourth Sunday. We have a band that plays at this service and would welcome any new musicians if you would like to join us in our worship. There is a special activity for children at all our morning services.

If there is a fifth Sunday in the month, you might not find us at St Andrew's as we take this opportunity to praise God with the other churches in our 5Folds Benefice.

At 8pm on the first Thursday of each month, we have fifteen minutes of silence and prayer remembering the people of Ukraine and other countries affected by war. This is followed by Compline (a short-sung service of night prayer). By tradition, people then leave in silence.

**Easter Services:** There will be a range of services during Holy Week

March 24th: Palm Sunday: Holy Communion

March 29th: Good Friday: 3pm: Poetry and meditations on the Stations of the Cross

March 31st: Easter Sunday: 11am: Holy Communion

We would love to welcome you to any of our services.

### Ministry Team:

Rev'd Jenny Hill (Priest and interim Team Leader): [jenny@5folds.org.uk](mailto:jenny@5folds.org.uk)

Canon Jan Payne (Licensed Lay Minister): [jan.payne@northstowe.church](mailto:jan.payne@northstowe.church)

Colin Smith (Benefice Administrator): 01954 203459 [admin@5folds.org.uk](mailto:admin@5folds.org.uk)

*(Colin works Tuesday to Friday 9.30 am to noon)*

## St Andrew's Church



### Snowdrop Open Garden and Studio

Once again, many of you enjoyed this opportunity to stroll around the beautiful gardens of Priory House and to view their lovely snowdrops and winter aconites. We were so happy to welcome you into St Andrew's for a revitalising cup of tea, a slice of cake and an opportunity to buy snowdrops and daffodils.

We are very grateful for your generosity and support for this event and once again must say a big thank you to Jeremy and Gillian Newsum for opening their garden to the village.

### Come and join us for these events at St Andrew's

Easter Fair March 30<sup>th</sup>: 2 - 4pm: Lots of things for families to enjoy on Easter Saturday: Easter egg tombola, Easter egg hunt, Easter Garden making and other activities. Tea, coffee and cake available.

Plant Sale May 18<sup>th</sup>: 10 - 4pm: Range of shrubs, flower and vegetable plants for sale and children's activities as well.

Teddy Bear Zip Wire: July: Our annual opportunity for your soft toy to show their bravery by zipping down from the church tower. Look out for further details on social media.

Harvest Happenings: September 29<sup>th</sup> A new event celebrating the Harvest season. More details in the next Meridian.

### Can you help us, please?

Mowing the graveyard

A small number of volunteers from the church and the village work very hard to keep the graveyard tidy and the grass mown. If you would be willing to join the mowing rota and help the team.

Please contact Peter Fuller: 01954 230774: [peterfuller@ntlworld.com](mailto:peterfuller@ntlworld.com)

### Plants for the Plant Sale

If you think you might have some plants or cuttings to donate for this sale, please contact Richard Hart 01954 202707 / [Richard94.hart@virgin.net](mailto:Richard94.hart@virgin.net)

### Information

If you have any queries about church services or about our events, please contact the churchwardens:

Jacqui Fuller: 01954 230774: [jacqui\\_fuller@hotmail.com](mailto:jacqui_fuller@hotmail.com)

Bridget Lofts: 07732726228: [bml20@cam.ac.uk](mailto:bml20@cam.ac.uk)



### Club Vintage - Wednesdays 2-4pm

Designed to support older people and those with dementia and their carers. There is a small £3 weekly charge. Enjoy a rotating variety of activities such as chair-based exercise, singing, bible-based crafts, quizzes, games and entertainment from others.



### Thursdays 10:30am-12:00pm



You will receive a very warm welcome at our community run cafe. Enjoy reasonably priced coffee, tea and homemade cakes.

### LITTLE LIGHTS - Fridays 10am-12pm

Baby & toddler group. All are welcome, bumps, babies, toddlers, parents and carers. Drop in at anytime for as long as you need. Only £2 per family, including drinks & snacks for all! We hope you can come along and join us!



### The Hub - Youth Group - Fridays 7-9pm

Open to all year 6 and secondary aged children. Come along and meet up with friends, chat, play games, listen to music and much more! Snack bar also available. Parents must complete a permission form.



# Sunday + Services



You are warmly invited to join us for our weekly services every Sunday from 10:45am followed by coffee in our compass room. Our services are open to everyone and are all family friendly with children's Sunday School groups for all ages! We have a special Communion service once a month on the 3rd Sunday. We also have several home groups which meet during the week for Bible study, prayer and support.

## Café Church

Every first Sunday of the month is our alternative all age, café-style service which include refreshments around tables, conversation and maybe even some crafts!

At Bethel we are brought together by our Faith, but what truly makes us family is our passion to serve God and love one another through every season.

We are known for our warm welcome and offer friendship and hospitality to both each other and the local community.

## CONTACT US

Pastor Bob - [pastorbob@bethelbaptistchurch.org.uk](mailto:pastorbob@bethelbaptistchurch.org.uk)

Sue Hope (Secretary) - [secretary@bethelbaptistchurch.org.uk](mailto:secretary@bethelbaptistchurch.org.uk)

Marianne Holt (Youthworker) - [marianne@bethelbaptistchurch.org.uk](mailto:marianne@bethelbaptistchurch.org.uk)

[www.bethelbaptistchurch.org.uk](http://www.bethelbaptistchurch.org.uk)

[www.facebook.co.uk/SwaveseyBethel](https://www.facebook.co.uk/SwaveseyBethel)

## Is anyone out there?

The only survivor of a shipwreck was washed up on a small, uninhabited island. He prayed feverishly for God to rescue him, and every day he scanned the horizon for help, but none seemed forthcoming. He eventually managed to build a little hut out of driftwood to protect him from the elements, and to store his few possessions.

One day, after scavenging for food, he arrived home to find his little hut in flames, the smoke rolling up to the sky.

It was more than he could take. He was stunned with grief and anger and shouted. "God, how could you do this to me?"

But the next day, he woke to the sound of a ship approaching the island to rescue him. How did you know I was here?" he asked in wonder.

"We saw your smoke signal," they replied.

We will not always understand, but we can always trust, that there is always something or someone bigger than us and our circumstances.

*Mary Lewis. Punxsutawney Pennsylvania.*

What do we do when we receive tough news? Maybe you lose your job or fail an exam, or perhaps, you have experienced the loss of a companion or a friend. Sometimes things just seem to go from bad to worse. Normally, the bad news arrives and then the shock of it all hits you hard. Then the difficulty comes just trying to sort out the jumble of mixed feelings and thoughts; doubt and fear often even cloud your thinking. Now, common sense tells us that there needs to be a response to these feelings, but the majority of us find it hard to respond or even know how to think straight!

If only there was someone I could talk to, we say, someone who really cares, someone with the wisdom that I just cannot find.

Although there are times when we choose to forget that he is there, I believe this is exactly what God promises to do for each one of us, he will listen and he is willing to respond.

There is hope to be had.

Pastor Bob Adams

Bethel Baptist Church

## Community Groups & Charities

Swavesey Sustainability Hub	The Sustainability Hub is a community group that offers space and support for people to realise their ideas for a more sustainable way of life. Contact: <a href="mailto:rvollerthun@gmail.com">rvollerthun@gmail.com</a> Website: <a href="http://www.thesustainabilityhub.biz">www.thesustainabilityhub.biz</a>
Cam Sight	Cam Sight is a local charity which offers support to anyone with a visual impairment, along with their family and carers. We meet on the 4th Wednesday afternoon of each month in Bar Hill. For more information please telephone Joan in Bar Hill on 01954 200622 or Alison at Cam Sight on 01223 420033 or email <a href="mailto:alison@camsight.org.uk">alison@camsight.org.uk</a> . For more info see:- <a href="http://www.camsight.org.uk">www.camsight.org.uk</a>
Cambridgeshire Hearing Help	CHH is a charity that helps people with hearing loss. Volunteers service NHS hearing aids and provide batteries and they attend Swavesey quarterly at Thistle Green. Advice on any aspects of hearing loss is available at a hearing help session or by calling the office on 01223 416141, E-mail: <a href="mailto:enquiries@cambridgeshirehearinghelp.org.uk">enquiries@cambridgeshirehearinghelp.org.uk</a> Website: <a href="http://cambridgeshirehearinghelp.org.uk">cambridgeshirehearinghelp.org.uk</a>
Care Network	Care Network supports volunteers, encourages independence and develops good neighbour projects. We provide the Welcome Home from Hospital service across Cambridgeshire. Contact:- Care Network, 5 Broadway House, 149-151 St Neots Rd, Hardwick, Cambridge, CB23 7QJ (tel: 01954 211919). Website: <a href="http://care-network.org.uk/">care-network.org.uk/</a>
Compass Cafe	Meets every Thursday morning from 10.30 until 12.00 at Bethel Baptist Church. Contact Sue Ellington on 01954 202923 or <a href="mailto:sue.ellington@virgin.net">sue.ellington@virgin.net</a>
Swavesey Library	A volunteer run community library based in Swavesey Village College. We are able to providing a full range of library facilities being directly linked to the Cambridgeshire County Council library service. For more info see:- <a href="http://www.swavesey.org.uk/community/swavesey-your-library/">www.swavesey.org.uk/community/swavesey-your-library/</a>
The Friends of the Rosie Hospital	The Friends of the Rosie Hospital are helping to make the Rosie a more comfortable environment for mothers and babies. Contact:- Mrs Mary Sanders (Hon Chair) <a href="mailto:rosieinstitches@ukonline.co.uk">rosieinstitches@ukonline.co.uk</a> Tel 01223 356615
East Anglia's Children's Hospice (EACH)	Put your free time to good use and volunteer at East Anglia's Children's Hospice (EACH) in Milton. Volunteering at a children's hospice doesn't always mean care work and fundraising as there are also tasks such as admin and maintenance of the grounds. Contact:- Clare Bates on 01223 815134, Email: <a href="mailto:clare.bates@each.org.uk">clare.bates@each.org.uk</a>
OWLS Community Car Scheme	Run by DBS checked volunteers the scheme offers a door-to-door service, for medical or some social journeys, to people who are unable to access other forms of transport. Ring 07505 254363 to book a journey, find out more, or to volunteer as a driver Website: <a href="http://www.swavesey.org.uk/village-links/owls-community-care-scheme/">http://www.swavesey.org.uk/village-links/owls-community-care-scheme/</a>

# CLUB INFORMATION

Army Cadets UK	Swavesey Detachment, No 2 (Cromwell) Company, Cambridgeshire Army Cadet Force meets each Tuesday evening at the Swavesey Village College from 7 pm. New recruits are welcomed from ages 12 years (year 8) to 18 years. <a href="http://www.armycadets.com/county/cambridgeshire-acf/">www.armycadets.com/county/cambridgeshire-acf/</a>		
Swavesey Five-a-Side Football Club	Currently seeking new members for this long-established club. We play each Wednesday evening from 6:30 to 7:30pm in the new sports hall at Swavesey Village College. Enquiries to Stewart Smith (07803 050234).		
Swavesey Girlguiding	Unit	Evening	Contact
	1st Swavesey Rainbows	Thursdays	<a href="mailto:caroline@overroad.co.uk">caroline@overroad.co.uk</a>
	1st Swavesey Brownies	Mondays	<a href="mailto:swaveseybrownies@outlook.com">swaveseybrownies@outlook.com</a>
	2nd Swavesey Brownies	Wednesdays	<a href="mailto:secondswaveseybrownies@outlook.com">secondswaveseybrownies@outlook.com</a>
	1st Swavesey Guides	Thursdays	<a href="mailto:swaveseyguides@gmail.com">swaveseyguides@gmail.com</a>
1st Swavesey Rangers	Thursdays	<a href="mailto:swaveseyrangers@gmail.com">swaveseyrangers@gmail.com</a>	
Swavesey Spartans	Swavesey Spartans ( <a href="http://swaveseyspartans.co.uk">swaveseyspartans.co.uk</a> ) is a Chartered Standard Football Club affiliated to Cambridgeshire Football Association. The club delivers football for children aged 6 and above. The club helps with the transition to open age football. Colts football ceases at the end of a player's Under 18 season. Open age football for men in Swavesey is available through Swavesey Institute FC (separate entry in this section of the Meridian). Swavesey Spartans FC have an open age football team for ladies playing league games on a Sunday. For more information about Spartans please contact Lewis Walsh ( <a href="mailto:swavesey.chairperson@gmail.com">swavesey.chairperson@gmail.com</a> ) or Neil Jordison ( <a href="mailto:swavesey.secretary@gmail.com">swavesey.secretary@gmail.com</a> or (01954) 204390).		
1st Swavesey Scout Group	All sections meet at the Scout Hut on the SVC site		
	<b>Beavers</b> Day: Thursday 18:00 to 19:00 Contact: John Pawson - Beaver Leader <a href="mailto:john.pawson@1stswaveseyscoutgroup.org.uk">john.pawson@1stswaveseyscoutgroup.org.uk</a>		
	<b>Cubs</b> Day: Tuesday 18:15 to 19:30 Contact: Steven Wilson - Cub Leader <a href="mailto:steven.wilson@1stswaveseyscoutgroup.org.uk">steven.wilson@1stswaveseyscoutgroup.org.uk</a>		
Swavesey Early Years and Playwork Centre	<b>Scouts</b> Day: Wednesday 19:00 to 20:30 Contact : Marian Bentley - Scout Leader <a href="mailto:Marian.Bentley@1stswaveseyscoutgroup.org.uk">Marian.Bentley@1stswaveseyscoutgroup.org.uk</a> For any other enquiries please email <a href="mailto:info@1stswaveseyscoutgroup.org.uk">info@1stswaveseyscoutgroup.org.uk</a>		
	Swavesey Early Years and Playwork Centre are based in their own purpose-built unit on the primary school site. It comprises Early Years children (aged from 2 years and 6 Months) between 9am and 3pm (formerly Swavesey Pre School) and we provide activities and care for primary school aged children before and after school. Breakfast Club runs from 7.30 am to 9am and After School Club from 3.15pm to 6pm. For information please contact Carol Panther (Early Years and Playwork Manager) by email: <a href="mailto:evandp@swavesey.cambs.sch.uk">evandp@swavesey.cambs.sch.uk</a> or by phone (01954) 273312 Ext 2 or 07803 812221.		
Swavesey Community Choir	If you enjoy singing and having fun then come and join Swavesey Community Choir. We meet every Wednesday in term time in Fen Drayton Village Hall, Cootes Lane, Fen Drayton from 7.45pm - 9.30pm. You don't need to be able to read music and no auditions needed, tenor and bass voices particularly welcome. For further details contact Julie Holmes <a href="mailto:julieholmes78@gmail.com">julieholmes78@gmail.com</a> Website: <a href="http://www.swaveseycommunitychoir.co.uk">www.swaveseycommunitychoir.co.uk</a>		

British Tang Soo Do Institute	British Tang Soo Do Institute practices the Korean martial art of Tang Soo Do. Our club training covers self defence techniques and many aspects of fitness including flexibility, coordination, conditioning, balance and discipline helping to promote a healthy lifestyle. For further information please contact Master Jeff Cockram on 07863 345681 or <a href="mailto:jeff@btsdi.co.uk">jeff@btsdi.co.uk</a> Or see our website: <a href="http://www.btsdi.com">www.btsdi.com</a>
Swavesey Tang Soo Do Club	Swavesey Tang Soo Do have classes on a Monday and Wednesday in the primary school main hall. Beginners and junior grades are 6pm-7pm and senior grades 7pm-8:15pm. The contact details are Mr and Mrs Morton 07919 050261 and <a href="mailto:enquiries@swaveseytsd.co.uk">enquiries@swaveseytsd.co.uk</a> The website is <a href="http://www.swaveseytsd.co.uk">www.swaveseytsd.co.uk</a>
Allotments in Swavesey	Down Hale Road towards the windmill and on the right there are 61 plots, mostly 150 sq yds (125 m2) in area, backed up by eight water tanks. Large yields of a wide range of high quality vegetable, fruit and flower crops can be grown successfully. If you are interested in joining the waiting list contact Val Sage Tel (01954) 230853
British Legion	For information contact:- Secretary - Angela Dye. (01954) 277453. email: <a href="mailto:dyeangela0@gmail.com">dyeangela0@gmail.com</a>
Swavesey Badminton Club	Located at the Swavesey Village College Sports Centre. The Club offers a high standard of play at club nights on Tuesdays 7pm to 8pm and on Fridays from 6.30pm to 9.30pm. We play competitive badminton in the Cambridge leagues and run men's, women's and mixed teams. Contact Helen Taylor on (01954) 230997 Email: <a href="mailto:enquiries@swaveseybadminton.net">enquiries@swaveseybadminton.net</a> Website: <a href="http://www.swaveseybadminton.net">www.swaveseybadminton.net</a>
Swavesey Billiards and Snooker Club	For information/membership please contact Graeme Waites (01954 230113) Email <a href="mailto:graham.waites566@btinternet.com">graham.waites566@btinternet.com</a>
Swavesey Camera Club	At Swavesey Camera Club we are proud to cater for photographers of all standards. For more information visit our website at:- <a href="http://www.swaveseycameraclub.co.uk">www.swaveseycameraclub.co.uk</a> . We meet every Thursday, 7.30 - 9.30pm, Lecture Room, SVC. Non-members welcome - £4 charge (first visit free). For further details please ring Simon Shore (01954) 230848
Swavesey Squash Club	Swavesey Squash Club has three international standard squash courts, in our recently refurbished clubhouse, on the Swavesey Village College site. The club has a number of weekly sessions running, suitable for beginners, improvers, and more advanced players. Unlimited use of the facility from £17 a month. A welcoming and active community club with social events and opportunities for competition. Visit our website for more details or contact Ali Loke on 07776 176866/ <a href="mailto:ali@alilokesquash.com">ali@alilokesquash.com</a> . <a href="http://www.swaveseysquash.com">www.swaveseysquash.com</a>
Swavesey & Over Cycling Club	We meet regularly throughout the year, with rides most weekends and also weekdays on spring and summer evenings. As a Cycling UK affiliated club our goal is to explore a joint passion for cycling in a safe, inclusive and social way. We aim to organise events throughout the year from day & weekend rides in the UK and long weekend trips in Europe. Contact: John Craven Email: <a href="mailto:socccommittee@gmail.com">socccommittee@gmail.com</a> Facebook: <a href="https://bit.ly/3GJCksZ">https://bit.ly/3GJCksZ</a> SOCC or Website: <a href="https://swaveseyovercc.wixsite.com/socc">https://swaveseyovercc.wixsite.com/socc</a>

Over Netball Club	Local friendly club, everyone welcome, from back-to-netballers to seasoned players. We have teams playing in CDNL and Fenland Netball league. Training is on Tuesdays 7-8:30pm at Northstowe Secondary School. First month is free, £15 per month thereafter. Contact <a href="mailto:overnetballclub@gmail.com">overnetballclub@gmail.com</a> for more information.
Over & Willingham Cricket Club	We have 2 open age (adult) cricket teams in the Cambridgeshire Saturday afternoon league playing 40 over cricket between the start of May and the end of August. If you are interested in joining our club, please get in touch with one of the club officials, come along to one of our training sessions or approach any club member on our matchdays (Saturday's). Contact Jane Reeson if you are interested. email - <a href="mailto:reesonhcx46k@aol.com">reesonhcx46k@aol.com</a> ; Telephone 07768 540146; or Facebook - Over and Willingham CC, or Website - <a href="http://overandwillingham.play-cricket.com">overandwillingham.play-cricket.com</a>
Swavesey Music School	Meets every Saturday of term time at Swavesey Village College. For further details see: <a href="http://www.swaveseymusic.co.uk/">www.swaveseymusic.co.uk/</a>
Swavesey District Bridleway Association	A liaison group representing local horse riders whose main aim is to protect existing and create safe new horse riding links between all local villages. New members welcome. Regular Newsletter/Social events calendar. Please contact Sue Rogers (01954) 232758
Swavesey & District History Society	Meet every third Tuesday in the month, 7.30pm, Carole Shaw room, SVC. Contact Carolyn Redmayne, Secretary (01954) 230037
Swavesey Institute Football Club	Swavesey Institute FC have 2 teams in the Cambs County Saturday afternoon leagues. For information about the club or if you are interested in playing open age (adult) football for the village please contact Martin Pickering on 07737 391445
Linedance	Linedance classes held on Wednesday mornings at the Bethel Baptist Church 9-30 to 11-30 am. Beginners always welcome. Contact Deborah Walker (01954) 231382 Email: <a href="mailto:deborahwalker105@talktalk.net">deborahwalker105@talktalk.net</a>
Swavesey & Over Conservation Society	At the moment we organise interesting walks If you need a lift: Phone: Trevor Grange - 01954 230119 or Pat Miles - (01954) 780485. Guests Are Always Welcome!
Swavesey & Over Tennis Club	Club night 1 October to 1 April is on Monday, 7.00 to 9.00pm. From 1 April - 30 September there will be club nights on both Mondays and Wednesdays. We welcome new members from anywhere in the locality. Further information from <a href="mailto:s.taylor996@btinternet.com">s.taylor996@btinternet.com</a> <a href="https://swaveseyovertennis.wixsite.com/sotc">https://swaveseyovertennis.wixsite.com/sotc</a>
Swavesey RADsOc	Friendly local drama group staging two or three productions a year. New members always welcome. Contact: Nathalie Balzano: <a href="mailto:nathaliewoodward@hotmail.com">nathaliewoodward@hotmail.com</a> Visit our website at <a href="http://www.swaveseyradsoc.org.uk">www.swaveseyradsoc.org.uk</a>
Swavesey W.I.	We meet every second Monday of the month at 7.30pm in the Memorial Hall. New members are always welcome to enjoy a variety of invited speakers and have a chat and cup of tea/coffee afterwards. For further information contact Margaret Guest tel (01954) 202757
Women's Walking	Women's Walking on Mondays and Fridays at 10:00am. Meet on Market Street green. Walk for approximately one hour on pathways in and around Swavesey. A chance to exercise and chat. - Reasonably robust footwear recommended. All welcome. Clare Fox (01954) 202882

# THE MERIDIAN ADVERTISER

## April/May 2024

## Landscaping & Garden Services

Grower & Supplier of Trees, Shrubs & Hedges



- ✘ Supply and or planting of trees, shrubs and hedges
- ✘ Cutting / Pruning of trees, shrubs and hedges.
- ✘ Land Preparation, spraying, lawn seeding and turfing
- ✘ General maintenance, clearance and repairs
- ✘ Fencing, Gates and Paving

For a FREE estimate phone :- 07786699977

or visit [www.eparish-landscaping.co.uk](http://www.eparish-landscaping.co.uk)  
or Email : [edwin@parishnet.co.uk](mailto:edwin@parishnet.co.uk)



■ ■ ■ ■ **Sue Allen**  
Bespoke Framing

- Photos, prints, oil paintings cross-stitch, mirrors & glass replacement
- Garments including football shirts, christening gowns and first shoes
- Large selection of frame styles
- Memorabilia and baby hand casting
- Based in Over



For all enquiries please contact Sue on **01954 203272** or (m) **07779 528 408**

Sueallenframing@gmail.com  
Sueallenframing.co.uk

**C & C BLINDS**  
*Specialists in Blinds | Any size | Any colour*

Vertical Blinds • Roller Blinds  
Venetian Blinds • Repairs • Roman • Pleated  
Perfect Fit • Wooden • Roof Blinds  
Awnings • Fitting Service

**10% OFF**  
With this leaflet

Free Estimates & 1 Year Guarantee

**Tel:** 01223 211 171 • **Mob:** 07761 262070  
**Email:** colincoleman64@hotmail.com

# ALEX ARTHURS

## BUILDING SERVICES

ALL ASPECTS OF BRICKWORK UNDERTAKEN

EXTENSIONS • TRADITIONAL BRICKWORK • ALTERATIONS  
GARDEN WALLS • CHIMNEY REBUILDING • REPOINTING  
FIREPLACES • STONE SILLS AND THRESHOLDS

PAVING • SLABS & NATURAL STONE • BLOCK PAVING  
CONCRETING • GROUNDWORKS • FENCING • DECKING

FOR A FREE QUOTATION & ADVICE CALL ALEX ARTHURS

**01954 232050 or 07841 433652**



**wilderspin**  
GARAGE LTD

*A local family-run business*

**MOTOR -  
HOME SERVICING -  
MOT'S & HABITATION CHECKS  
ALL DONE ON SITE**



## SERVICING & REPAIRS

EXHAUSTS | BATTERIES | TYRES | CLUTCHES | BRAKES | TIMING BELTS

## M.O.T. TESTING CENTRE

CLASSES 4,5 & 7 | MOTOR HOMES | MINI BUSES  
CARS | VANS | LIGHT COMMERCIAL

**FREE**  
USE OF  
COURTESY CARS

**FREE**  
WINTER  
HEALTH CHECK

**FREE**  
COLLECTION AND  
DELIVERY SERVICE

OAKTREE ROAD | FEN DRAYTON | CB24 4SS  
Tel: 01954 230273 | Email: [service@wilderspins.net](mailto:service@wilderspins.net)  
[www.wilderspin-garage.co.uk](http://www.wilderspin-garage.co.uk)



## ANDREW EVANS

01954 780 999 – 01223 864335

email: [andrew@omegaclean.co.uk](mailto:andrew@omegaclean.co.uk)

[www.omegaclean.co.uk](http://www.omegaclean.co.uk)

- ✓ Carpet Cleaning
- ✓ Upholstery Cleaning
- ✓ Tile & Grout Cleaning
- ✓ Leather Cleaning
- ✓ Oriental Rug Cleaning
- ✓ Carpet & Fabric Protection
- ✓ Allergy Relief Treatment
- ✓ Odour Eradication
- ✓ Stain Removal
- ✓ Carpet Fitting

Family Business Since 1980



## Sales: Servicing Salt

- Supply & Installation Service
- Servicing & Repairs
- Drinking Water Systems
- Salt Delivery & Collection

**AQUASTREAM**  
Water Softeners limited

01954 230898



[www.aquastream-softeners.co.uk](http://www.aquastream-softeners.co.uk)

Unit 17 Meridian, Buckingham Business Park, Anderson Road, Swavesey, Cambridge, CB24 4AE

Authorised  
Ecowater & Kinetico  
Dealership




## RPJ SOLUTIONS

### PAINTING SOLUTIONS

### INTERIOR AND EXTERIOR

### CALL TODAY FOR MORE INFORMATION

### AND TO ARRANGE A FREE QUOTE!

 RPJ Solutions

Phone: 07794 732097

Email: [ryan@rpjsolutions.co.uk](mailto:ryan@rpjsolutions.co.uk)

Web: [www.rpjsolutions.co.uk](http://www.rpjsolutions.co.uk)



## Willingham Auctions Café

Serving food & drinks 7 days a week

Open 9am to 5pm (4pm Sundays)



Serving a selection of cakes, coffees, fresh Lakenham Creamery ice creams and a variety of breakfasts and lunches with Gluten Free and Vegetarian Options.

Thursday to Saturday Evenings we also have Lot 25 Bar, serving a large range of drinks including cocktails over the weekend with food trucks also available every Friday and Saturday evening for your enjoyment.

Find us at 25 High Street, Willingham and enjoy our inside and outside dining areas.

We also have regular event nights,  
please see our on-site posters for more information.

We are also dog and child friendly please feel free to bring the entire family.

web: [www.willinghamauctionscafe.com](http://www.willinghamauctionscafe.com)

email: [hello@willinghamauctionscafe.com](mailto:hello@willinghamauctionscafe.com)

tel: 01954 261252

# A.M.S GROUP

## Paving & Landscapes Division

Friendly, reliable, family run business  
based in Swavesey

All aspects of landscaping and  
garden maintenance from fencing, gates,  
turfing, patios and artificial grass to Groundworks.

We always take pride in our work and always ensure  
that our clients are 100% happy

Please contact us for a free no-obligation quote today  
E: [amsgroup76@hotmail.com](mailto:amsgroup76@hotmail.com) - T: 07741 908344  
[www.amsgrouppavingandlandscapes.co.uk](http://www.amsgrouppavingandlandscapes.co.uk)

Driveways (Tarmac, block pave, resin)  
Patios - Fencing - Turfing - Pathways

Digger & Driver Hire Available

Fully insured in public liability

Proud to Sponsor Swavesey Spartans U15s



## Flooring & Furnishing Care Specialist

- Carpet Cleaning
- Upholstery Cleaning
- Fine Rugs Cleaning
- Stone Floor Cleaning
- Wood Floor Sanding

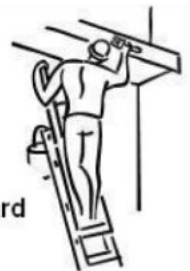
Call us now on:

### 01223 790796

Please quote "Swavesey Meridian"  
[www.artofclean.co.uk](http://www.artofclean.co.uk) / [info@artofclean.co.uk](mailto:info@artofclean.co.uk)  
Art of Clean, Denny Lodge Business Park,  
Ely Road, CB25 9PH  
[www.artofclean.co.uk](http://www.artofclean.co.uk)



## Andy Tibbett & Sons Painting & Decorating



- \* All internal & external work carried out to a high standard
- \* Trade references can be supplied
- \* Very competitive pricing
- \* A prompt & polite service from a name you can trust

Telephone: 01954 230810

Mobile: 07717 493723

Email: [andrewtibbett@hotmail.co.uk](mailto:andrewtibbett@hotmail.co.uk)





# Ash Croft Veterinary Surgery

169 St. Neots Road,  
Hardwick, Cambridge CB23 7QJ  
Mon.-Fri. 8.30am - 10.30am  
4.30pm - 7.00pm  
Saturday 9.00am - 11.00am  
Sunday 10.00am - 11.00am  
Tel: 01954 210250

Unit 1 Pendrill Court, Ermine Street North  
Papworth Everard, Cambridge CB23 3UY  
Monday, Wednesday, Friday 11.30am - 1.30pm  
Saturday 12noon - 1.30pm  
Tel: 01480 831615

Laura Wood MA, VetMB, MRCVS  
Simon Shore MA, VETMB, MRCVS  
Dragan Tomovic BVSc, MRCVS  
Consultations by appointment only

## G B Builders

NO JOB TOO SMALL

**FOR ALL MAINTENANCE RENOVATIONS  
AND DIY WORK**

All general building repairs & odd jobs  
Specialist in Painting & Decorating  
Groundwork & Grass cutting

- Fencing
- Brickwork & Plastering
- Plumbing
- Driveways, Paths, Patios
- Carpentry
- Slabbing
- Roofing
- Concreting
- Tiling
- Blockpaving
- Drainage
- Guttering

Call Today  
07877 742420  
Or 01480 437511  
g.builders@yahoo.co.uk

# BA Building Services

**EXPERIENCED LOCAL BUILDER**

For all your building requirements

- All aspects of Brickwork
- Extensions
- Patios, Block Paving, Fencing
- Conservatories
- Porches, Doors & Windows
- Tiling
- Bathroom & Kitchens

ALL ENQUIRIES WELCOME

TEL 01954 232 241 MOBILE 07952 339 227

## F.W. COOK FUNERAL SERVICE

49 Church Street Willingham

Tel Willingham 260325

Andrew Cook Dip FD Kay Cook Dip FD MBIE

A long established family business providing a personal 24 hour service

Golden Charter pre-payment funeral plans available

## COOK'S MEMORIALS

New memorials and refurbishments  
Brochures available on request



## Chartered Physiotherapist

Susannah Jennings BSc (Hons)  
MCSP, HCPC, MAACP



### Musculo-Skeletal Injuries:

- Back & Neck Pain
- Muscle & Joint Pain
- Rehabilitation after Surgery
- Postural Conditions (including Post & Ante Natal)
- Mobility Difficulties

### Treatments Available:

- Joint Mobilisation & Manipulation
- Soft Tissue Massage and Stretching
- Acupuncture
- Mobility Assessments
- Electrotherapy
- 1:1 Clinical Pilates
- Rehabilitation Programs

31 Thistle Green, Swavesey, Cambridge. CB24 4RJ.  
Tel: 07970 548205

Email: [susie@swaveseyphysio.co.uk](mailto:susie@swaveseyphysio.co.uk)  
Web: [www.swaveseyphysio.co.uk](http://www.swaveseyphysio.co.uk)



XBOX & PlayStation Repairs

Phone Repairs inc. Screens

Nintendo Switch Repairs

Games Console Refurbishments

Phone, Laptop & PC Refurbishments

Sales      Repairs      Refurbishments      Servicing

07845 283 537  
01223 752 947

[getrefurbed.com](http://getrefurbed.com)

@GetRefurbed

# A. R. CATER

Carpentry & Joinery

Established 1984



- KITCHENS •
- WARDROBES •
- CUPBOARDS •
- SECURITY LOCKS SUPPLIED & FITTED •
- COVINGS FITTED •
- UPVC FASCIA, SOFFITS & GUTTERING •
- TILING TO KITCHENS & BATHROOMS •
- GENERAL PROPERTY MAINTENANCE •

CALL TODAY FOR A  
"FREE ESTIMATE"

01954 - 232069

OR

MOBILE 07778 307578

# M.B. FLACK

Interior & Exterior

Painter & Decorator  
& Repairs

30+ Years Experience  
in the trade.

**Free Estimates**

Telephone

**01954 231 915**

## La` Mac

Hairdressing for all  
the family



- ◆ Friendly Service
- ◆ Traditional & up to date styling
- ◆ Fully trained in all colouring techniques
- ◆ Open Tuesday - Saturday  
(late 7.00pm Wednesday)

We aim to make your visit as pleasant as possible, with a professional and friendly atmosphere to help you relax.

If you are thinking of a change please pop in - we will be pleased to help.

☎ 01954 231 445

2a Market Street Swavesey  
Cambridgeshire CB24 4QG



**Massage**

**Facials**

**Relaxation techniques**

**Mindfulness**

**Tropic Ambassador – freshly made, vegan, cruelty-free, green skincare products. Free Skincare consults in Swavesey/remotely.**

Website: [www.jkreflections.co.uk](http://www.jkreflections.co.uk)

Email: [jo@jkreflections.co.uk](mailto:jo@jkreflections.co.uk)

Phone: 07714 625243

Facebook: JK Reflections

**Gift Vouchers & e-vouchers**



## DDB Home Solutions Limited

Making your house a home

We are a company based in Needingworth specialising in kitchen and bathroom installations and can also supply the following services;

- Carpentry and Joinery
- Plumbing
- Electrical installation – Part P registered
- Floor and wall tiling
- Less-abled Bathrooms and Wet Rooms



We are a member of the Institute of Carpenters and also the Guild of Master Craftsmen with over twenty years experience

Visit our website for more information - [www.ddbhomesolutions.co.uk](http://www.ddbhomesolutions.co.uk)  
For an informal discussion or quote please contact Darren or Jo Turnbull  
Tel: 01480 495984, or email us at [Darren@ddbhomesolutions.co.uk](mailto:Darren@ddbhomesolutions.co.uk)



ELECSA



## Accountancy & Taxation Services



Tax Returns  
Business Accounts  
Bookkeeping  
VAT Returns  
Payroll  
Audits

**L.A.Wells FCCA CTA**

Chartered Certified Accountant, Chartered Tax Advisor

4 Scone  
Fenstanton  
Huntingdon  
Cambridgeshire  
PE28 9QG

Tel: 01480 466 197



[www.lwells.co.uk](http://www.lwells.co.uk)

## LIGHT REMOVALS

Small Houses to Single Items

**ANY DISTANCE  
7 Days a Week**

**For a Free Quote**

**Telephone:**

**01480 352220**

**07711 556833**

[www.cambslightremovals.com](http://www.cambslightremovals.com)

# R.A. Denton

## Painting & Decorating

*High Quality*



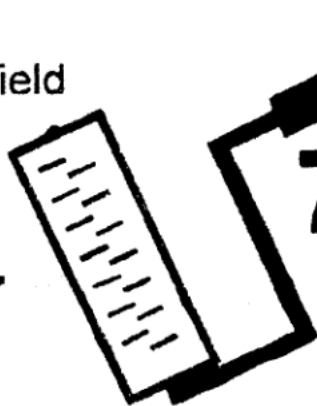
**Industrial**

**Commercial**

**Domestic**



102, Stonefield  
Bar Hill  
Cambridge  
CB3 8TB



# 782472



Open 6 days a week



# Total Relaxation

at the farmhouse

## Tel: 01954 789 344

Aromatherapy, Body Massage, Indian Head Massage, Reflexology, Hot Stone Massage, Hopi Ear Candles, Facials, Nail Extensions, Manicures & Pedicure, Gel Polish, Lash and Brow Treatments, Waxing, Hairdressing

**Gift vouchers always available**

**[www.total-relaxation.co.uk](http://www.total-relaxation.co.uk)**

email: [total.relaxation@ntlworld.com](mailto:total.relaxation@ntlworld.com)

The Old Farmhouse, Gladeside, Bar Hill, Cambridge CB23 8DY

# Eyes of Swavesey

Opticians



Progress House (Coulson's Building),  
Rowles Way, Buckingway Business Park,  
Swavesey CB24 4UG

T: 01954 231158

E: [info@eyesofswavesey.co.uk](mailto:info@eyesofswavesey.co.uk)

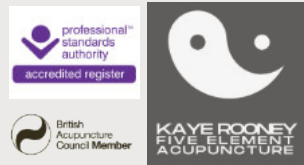
W: [www.eyesofswavesey.co.uk](http://www.eyesofswavesey.co.uk)

**'Seeing things differently'**

Experts in Eyecare since 1994. Our expert team combine the latest diagnostic technology with our carefully selected eyewear collection and products to help you look and feel your best.



Struggling with Long Covid?  
 Living with chronic pain?  
 Can't get a good night's sleep?



Five Element Acupuncture

- diagnoses the root cause
- calms your nervous system
- relaxes tense muscles
- rebalances your body
- nourishes mind and spirit

Discover how working on your health with a fully qualified Five Element acupuncturist can transform your outlook.

Phone or email today for your FREE 20-minute consultation with Willingham acupuncturist Kaye Rooney  
 Lic. Ac., B.A Hons. MBACc  
[kaye@kr-acupuncture.com](mailto:kaye@kr-acupuncture.com)  
 07593 058748



Find out more at [kr-acupuncture.com](http://kr-acupuncture.com)

Garolla garage doors are expertly made to measure in our own UK factories, they're strong and solidly built. The electric Garolla door rolls up vertically, taking up only 8 inches inside your garage, maximising valuable space. Our experienced installers will fit your new door and they'll take away the old one too, so there's no mess.

Give us a call today and we'll come and measure up **FREE** of charge.

**GAROLLA**  
 ROLLER SHUTTER DOORS

[www.garolla.co.uk](http://www.garolla.co.uk)

CALL US TODAY ON:  
**01954 750 018**  
 MOBILE:  
**07537 149 128**

LINES OPEN 7 DAYS A WEEK

\*Offer valid for openings up to 2.6m wide & including 2 remote controls, 55mm white slats, internal manual override.

# Swavesey Windmill

Hale Road Swavesey Cambridge CB24 4QP  
 Tel: 01954 232 247

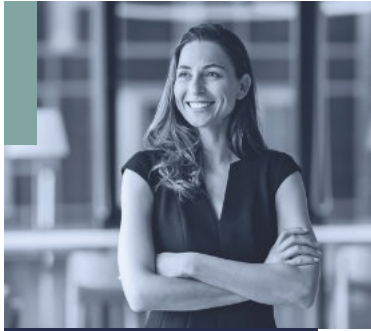
**Fantastic function hall with licensed Bar available for hire for any event, set in the grounds of The Windmill.**

**Private parties, Fundraising  
 Charity Nights, & Band Concerts!**

**Licensed with Cambridge County Council  
 For Weddings, Civil Partnerships,  
 & Baby Naming Ceremonies**

**To book to view or hire please phone Pam or Lisa.  
 To keep updated on events follow  
 Swavesey Windmill on Facebook**

65



## Feel confident and in control

Financial advice for the future you imagine.

We're here to help you feel in control of your money. Not the other way around.

Let's start a conversation.

**James Tait**  
BA (Hons) DipPFS  
Director  
01954 231768  
07768 305151  
taitts@sjpp.co.uk  
www.taitfinancialservices.co.uk

Associate Partner Practice



Tait Financial Services Ltd is an Appointed Representative of and represents only St James's Place Wealth Management plc (which is authorised and regulated by the Financial Conduct Authority) for the purpose of advising solely on the group's wealth management products and services, more details of which are set out on the group's website www.sjp.co.uk/products. The 'St James's Place Partnership' and the titles 'Partner' and 'Partner Practice' are marketing terms used to describe St James's Place representatives.

SJP Approved 30/01/2023

SJP193569c-B1 (09/22)

Contact us:  
david@rosegatefarm.co.uk  
07922 588171



Rose and Crown Road Road, Swavesey

Butchery Open Fridays (8.30 am - 5.30 pm) & Saturdays (8.30 am - 1.30 pm)

[www.rosegatefarm.co.uk](http://www.rosegatefarm.co.uk)

Bespoke Butchery – butchered to suit your requirements

### BEEF

- Primarily from our own Hereford / Angus herd
- All at least 21-day aged

### LAMB

- Swavesey born and bred
- individual cuts, or ¼, ½ or whole lamb packs available

### PORK

- Bred & reared here at Rosegate Farm.
- Home-made sausages, dry-cured bacon and gammons (smoked and unsmoked)
- Cooked Ham

### CHICKEN (sourced from Diaper Poultry)

- Sutton Hoo Free Range
- St George Chicken

BBQ Meats – Burgers – Kebabs – Glazes

*See you in the butchery!*



## Rothwell's Carpet Cleaning

### Carpet, Stone Floor, Upholstery & Rug Cleaning

*A few points that make us stand out,*

Rothwell's has been in business since 1993

We're an honest local family firm.

Our large truck mounted machines mean more cleaning & drying power for the best results possible.

Members of both the NCCA and TACCA.

We will move the furniture.  
100% satisfaction or it's FREE.

Call Oliver and Max Campbell for expert help today.

**01223 832 928**

[www.Rothwells.biz](http://www.Rothwells.biz)

## STEPHANIE'S CARE

Care and Support in your own home

Offering Compassion, Kindness Confidentially as well as Personnel Care to my clients

I am local so if you think I might be able to help you please contact me for an informal chat on the phone or in your home

Telephone: 01353 777 789  
Mobile: 07800 668 788

Qualified in Health & Social Care Level 3  
18 years extensive experience  
Fully Insured & Enhanced DBS Checked  
Reference's are available

# YOUR COMPLETE

GAS, HEATING AND PLUMBING COMPANY

- PLUMBING
- HEATING
- GAS
- BATHROOMS
- WATER SOFTENERS
- PROPERTY MAINTENANCE



01954 204044

[entiregroup.co.uk](http://entiregroup.co.uk)

[service@entiregroup.co.uk](mailto:service@entiregroup.co.uk)

A distributor for Harvey Mini max water softener



# AJ Carpentry



Local, family run business who thrive on transforming project dreams into a stunning reality!

*Extensions – Conversions – New Builds – Groundworks – Bathrooms*

*Kitchens – Flooring – Electrical works – the list is endless!*

[www.ajcarpentry.co.uk](http://www.ajcarpentry.co.uk)

07989 341724 / 07812 671495

## Stamp Chiropody & Podiatry

Casey Stamp MCPod BSc (Hons)  
HCPC registered CH15068



- General chiropody – nails, hard skin & corns
- Diabetic foot care
- Children's Feet – Growing pains, Verrucas, etc.
- Sporty Feet & associated injuries + pains
- Ingrowing toe nails
- Custom made Orthotics/insoles
- Dancing feet – we'll keep you on your toes
- Biomechanics & Gait analysis

New Clients Always Welcome.

Find us at:

Willingham Medical Practice,  
52 Long Lane, Willingham,  
Cambridge, CB24 5LB

Tel: 01480 464507 or 07807505534

Also available at:

Salus Wellness Clinics  
47 Norfolk St  
Cambridge CB1 2LD

Tel: 07807 505534

[www.stamppodiatry.co.uk](http://www.stamppodiatry.co.uk)

## CHIMNEY SWEEP Cambridgeshire Trading Standards Approved



- Fully Insured
- Enhanced CRB Check
- Certificates issued
- Bird nests removed
- All types of chimney swept
- No Mess, No Fuss



MAKE AN APPOINTMENT  
TODAY WITH

## SWEEPOVER

Tel: 01954 230777  
Mob: 07779711458

[www.sweepover.co.uk](http://www.sweepover.co.uk)

19 New Road, Over, CB24 5PJ



The Ultimate  
FLOOR SANDING  
Company

AFFILIATED SERVICE PROVIDER

## Dust Free Wood Floor Sanding & Restoration

Is your Wooden Floor in need of  
Sanding?

Call us today **01223 863 632**

Please quote "Swavesey Mag"

[www.floorsandingcambridge.co.uk](http://www.floorsandingcambridge.co.uk)

## Vintage travel your own pool

..holidays with added peace of mind.

Your Local  
Travel  
Company



Handpicked Villas with private pools.  
Over 30 years of creating perfect holidays.  
Book with confidence.

• Greece • Spain • Lanzarote • Balearics • Portugal • Turkey • France • Italy • Croatia • Cyprus

01954 261 431  
[www.vintagetravel.co.uk](http://www.vintagetravel.co.uk)



# MAGAZINE ADVERTISING RATES

ADVERTISING RATES AS FROM FEBRUARY 2024.  
For a one year inclusion i.e. six issues.

Size	Advertiser	Magazine
Full page	£260	£345
Half page	£135	£195
Quarter page	£90	£120

The following rates are for one inclusion only and as a premium rate is already charged will be positioned in the magazine section:-

Half page one inclusion only £90

A small charge may be made for creating and amending artwork

For all advertising details please contact:  
April Martin Tel: 01954 200533 or  
Email: [adverts@swaveseymeridian.org.uk](mailto:adverts@swaveseymeridian.org.uk)



Plumbing and heating supplies  
to the trade and public



We are a local independent company supplying  
all your plumbing & heating needs, including:

**Bathroom Taps • Boilers • Bathroom Suites  
Underfloor Heating • Central Heating Radiators  
Heated Towel Rails • Showers • Kitchen Taps  
Sinks • Baths • Sanitaryware  
Plastic Plumbing Systems • Fittings**



*Do not hesitate to ring, email or visit...*

Unit 10, Norman Way Industrial Estate, Over, Cambridge CB24 5QE.  
Tel: 01954 230268. E-mail: [info@dandtsupplies.co.uk](mailto:info@dandtsupplies.co.uk). [www.dandtsupplies.co.uk](http://www.dandtsupplies.co.uk)

## EXTRA MAGAZINES

Send a Meridian Magazine subscription to your favourite Auntie, or to a friend who has recently left the village.

Six issues (one year) costs only £12.00.

Send a cheque (made out to 'The Meridian Magazine') and the address of the recipient, to:

Jan Waller, Meridian Subscriptions,  
35 Carters Way, Swavesey, Cambridge, CB4 5RZ

## NOTIFICATION OF MAJOR EVENTS

Please use this form to notify us of any major events you are organising so that we can publish the dates in the magazine and on the website at [www.swaveseymeridian.org.uk](http://www.swaveseymeridian.org.uk)

It is hoped this will avoid major events clashing on the same day. Please send to the Editor, 14 Black Horse Lane, Swavesey.

Event \_\_\_\_\_

Location \_\_\_\_\_ Date \_\_\_\_\_ Time \_\_\_\_\_

Contact Name \_\_\_\_\_ Tel No. \_\_\_\_\_

## BIRTHDAYS, ANNIVERSARIES & SPECIAL OCCASIONS

If you would like to mark any occasion that is special to you or somebody that you know by announcing it in this magazine, please fill in the form below.

Also supply your name and contact details, and return to the Editor by the copy date.

We will endeavour to include it in our next issue.

SHORT MESSAGE:

---



---



---

USEFUL TELEPHONE NUMBERS & WEBSITES		
Doctor's Surgery (Swavesey)	01954 230202	
Doctor's Surgery (Over)	01954 231550	
<b>Police:</b>		www.cambs.police.uk
Emergency	999	
All Non Emergency Calls	101	
Swavesey Parish Council	01954 202982	www.swavesey.org.uk
Swavesey Pre-school Enquires	01954 273312 Ext 2	eyandp@swavesey.cambs.sch.uk
Swavesey Primary School	01954 273312	www.swavesey.cambs.sch.uk/
Swavesey Village College:	01954 230366	www.swaveseyvc.co.uk
Community Office	01954 234488	www.swaveseyvc.co.uk/community-education/
Swavesey Post Office	01954 232311	
<b>Cambridgeshire County Council:</b>		www.cambridgeshire.gov.uk
General Enquiries	0345 045 5200	
Library Service	0345 045 5225	www.cambridgeshire.gov.uk/residents/libraries-leisure-culture/libraries
South Cambs District Council	01954 713000	www.scambs.gov.uk
<b>Electricity (UK Power Networks):</b>		
Emergency & Power Cut Report Line	0800 783 8838	www.ukpowernetworks.co.uk
Gas Emergencies (National Grid)	0800 111999	https://www.nationalgrid.com/gas-transmission/safety-and-emergencies/emergencies-and-safety-advice
Water (Cambridge Water Company) Leak:	0800 316 7676	www.cambridge-water.co.uk
Sewage (Anglia Water) Emergency	03457 145 145	www.anglianwater.co.uk
Environment Agency (Flood Line):	0800 807060	www.environment-agency.gov.uk
Samaritans	116 123	www.samaritans.org
Addenbrooke's Hospital:	01223 245151	www.addenbrookes.org.uk
Hinchingbrooke Hospital	01480 416416	www.hinchingbrooke.nhs.uk
NHS Direct	111	111.nhs.uk
<b>Airports + Road &amp; Rail:</b>		
Local Taxi: Alpha Cars	01954 232300	www.alphacarsonline.co.uk
Gatwick	0844 892 0322	www.gatwickairport.com
Heathrow	0844 335 1801	www.heathrow.com
Luton	01582 405100	www.london-luton.co.uk
Stansted	0808 169 7031	www.stanstedairport.com
Traveline (Bus Coach & Rail)	0871 200 22 33	www.traveline.info
<b>Local Timetables:</b>		
Cambridgeshire Bus Information		www.cambridgeshirebus.info
Stagecoach	01223 433250 0345 241 8000	www.stagecoachbus.com
National Express Coaches	03717 81 81 81	www.nationalexpress.com
Whippet Coaches	01954 230011	www.go-whippet.co.uk
National Rail	03457 48 49 50	www.nationalrail.co.uk
<b>Veterinary Practices:</b>		
Village Vet (Longstanton)	01954 780027	www.villagevet.co.uk
Ash Croft (Hardwick)	01954 210250	www.ashcroftvet.co.uk

**RADSOC presents;**  
**A murder mystery like**  
**you've never seen before....**



**HELLO,  
IS THERE  
ANY BODY  
THERE?**

Written by Ian Hornby  
Directed by Chris Avery



**SCAN ME**

**Bethel Baptist Church, Swavesey: Tuesday 7th May 7.30pm**

**Rampton Village Hall: Friday 10th May 7.30pm**

**Bar Hill Church: Saturday 11th May 2.30pm & 7.30pm**

*Tickets available via web or phone:*

**www.swaveseyradsoc.org.uk or Call 07563334555**



# CELEBRATE 100 YEARS OF SWAVESEY MEMORIAL HALL!



SATURDAY 18TH MAY 2024



10-3PM

▶ HISTORY OF THE HALL EXHIBITION

ARTISAN POP UP MARKET ◀

▶ TEA, COFFEE & CAKE!



SWAVESEY MEMORIAL HALL  
HIGH STREET, SWAVESEY  
CAMBRIDGE, CB24 4QU.

