

THE MERIDIAN SWAVESEY



No. 210 October/November 2024

Global Wave of Light

Tuesday 15 October, 7-8 PM

We would like to invite you to join others across the world by lighting a candle at 7pm local time and leaving it burning for one hour to remember all babies that have died too soon.



St Andrew's Church, Swavesey, will be open all day for your quiet reflections and especially between 7-8 pm, for those who would like to light a candle as part of the global wave of light. Come and go as quietly as you wish.

Alternatively, join the virtual Wave of Light, by taking a photo of your candle and posting it to Facebook, X (Formally Twitter) or Instagram using [#WaveOfLight](https://www.facebook.com/hashtag/WaveOfLight) at 7pm.



Details from Martin & Diane Herrington
ms_herrington@yahoo.co.uk
(01954 230894)
babyloss-awareness.org

EDITORIAL

Looking ahead to autumn, cooler days longer nights but also the many colours of autumn and the beginning of plans for Christmas for many, discover what is happening-! where else? in the pages of your Meridian! Swavesey has a lot to offer with evening and daytime classes clubs and societies for all ages. New to the village? look and see what we have for you.

There is a downside to autumn however and that is darker evenings and mornings so remember reflective clothing and lights even if you are walking- have a dog? they need safety items too! so do children.

Watch out for speed restriction signs especially in areas where you have been used to going faster!

NB deadline for the December/January issue is 20th October, this is a popular issue to promote Xmas and New year festivities don't miss out.

Editor

IN THIS ISSUE ...	
Front Cover - Pigs by Edwin Parish	
Inside Front Cover - Wave of Light	
Inside Back Cover - ODC Quiz Night	
Back Cover - RADSOC Wind in the Willows	
Editorial	page 1
Meridian Committee	page 2
Major Events List	page 3
Dates for your diary and forthcoming events	page 4
Club Reports	page 5-12
Miscellany	page 13-25
Medical News	Page 25 -28
School Information	page 29-33
Parish and County news	page 35-40
Churches	page 41-46
Community Groups & Charities table	page 47
Club Information	page 48-50
Advertiser	Page 51-70
Extra Magazines, Major Events & Birthday forms	Page70-71
Useful Telephone Numbers	page 72

MERIDIAN COMMITTEE

Editor:	April Martin	Tel: 01954 200533
Treasurer	David Gedny	Tel: 01954 231305
Production:	Alan Morris	Tel: 01954 202664
Advertising:	David Gedny/April Martin	Tel: 01954 231305 / 01954 200533
Distribution	Neil Jordison	Tel: 01954 204390
Subscriptions	Neil Jordison	Tel: 01954 204390
Complaints	Maureen Hadfield	Tel: 01954 230414
Proofreading	Alison Lucas	Tel: 01954 232984
Website:	Alan Morris www.swaveseymeridian.org.uk	Tel: 01954 202664
Emails:	editor@swaveseymeridian.org.uk	
	adverts@swaveseymeridian.org.uk	
	webmaster@swaveseymeridian.org.uk	
	distribution@swaveseymeridian.org.uk	

SUMMIT



LANDSCAPES

PAVING - DRIVEWAYS - BRICKWORK
CARPENTRY - GROUNDWORKS





www.landscapingpaving.co.uk
PHONE: 01223-929394

Major Events List

This list is intended to avoid major events clashing on the same day. It will only work if we are advised of all such events, so please let us know as soon as you can confirm the details.

A form is available at the back of this magazine. We will list them in this section of the Magazine and also on our website at www.swaveseymeridian.org.uk

Friday 18 October	St Andrews Church	Wine Tasting Evening - See social media for ticket details or contact Jacqui Fuller: 01954 230774 or Bridget Lofts: bml20@cam.ac.uk
Saturday 16 November	Alison Martin	Swavesey Christmas Craft Market - 10-4pm in Memorial Hall - Refreshments + Tombola - Proceeds to Over Day Centre - Contact 07719 624201
Friday 17 January	RADSOC	Wind in the Willows - Swavesey Village College - For info & tickets contact:- swaveseyradsoc.org.uk
Saturday 18 January	RADSOC	Wind in the Willows - Swavesey Village College - For info & tickets contact:- swaveseyradsoc.org.uk
Sunday 19 January	RADSOC	Wind in the Willows - Swavesey Village College - For info & tickets contact:- swaveseyradsoc.org.uk

October		
Friday 4	Refuse Collection	Black Bin Collection
Thursday 10	Parish Council	Planning Meeting
Friday 11	Refuse Collection	Green & Blue Bins
Friday 18	St Andrews Church	Wine Tasting Evening - See social media for ticket details or contact Jacqui Fuller: 01954 230774 or Bridget Lofts: bml20@cam.ac.uk
Friday 18	Refuse Collection	Black Bin Collection
Friday 25	Refuse Collection	Green & Blue Bins
Monday 28	Parish Council	Full Council Meeting
November		
Friday 1	Refuse Collection	Black Bin Collection
Friday 8	Refuse Collection	Green & Blue Bins
Thursday 14	Parish Council	Planning Meeting
Friday 15	Refuse Collection	Black Bin Collection
Saturday 16	Alison Martin	Swavesey Christmas Craft Market - 10-4pm in Memorial Hall - Refreshments + Tombola - Proceeds to Over Day Centre - Contact 07719 624201
Friday 22	Refuse Collection	Green & Blue Bins
Monday 25	Parish Council	Full Council Meeting
Friday 29	Refuse Collection	Black Bin Collection



Swavesey WI News

Meetings coming up

October 14 th	Apple Day and Harvest Festival Competition. Members to take part in Art/Craft/Baking competitions Should be a fun meeting!!
November 11 th	Make your own Christmas Cracker. Demonstration by Linda Smith
December 9 th	The Great Big Swavesey WI Quiz of the Year!

Our August meeting found us in the Memorial Hall enjoying a Bingo Night! A very well attended meeting which proved lucky for some winning members taking home prizes!

Along with our monthly meetings we support our Book Group/Eating Out Group/ Walking Groups. Hopefully something for everyone.

If you would like further information on any of our activities please contact Margaret Guest 01954. 202757/Deirdre Burgess 01954 230897.

You can also find us hosting the Compass Cafe on the 4th Thursday of the month in the Bethel Church.

Swavesey & District History Society

May meeting. 48 people, including some first timers, attended to hear Eleanora Gardner, an Ely Tour Guide, speak on Cambridgeshire Customs and Folklore. She selected just a few topics from courtship, marriage, pregnancy, birth, death and burial, weather, curing the sick, calendar customs, ghosts and witchcraft.

Because of the difficulty of travelling around in the Fens the most convenient time for young people to meet was often after church. Young ladies wore yarrow and young men wore wormwood to show members of the opposite, er, that they were interested in courtship and trying to find a possible partner. In winter evenings young men would make two corn dollies and give one to the girl of his choice after church. The following week if she wore it on her left breast, over her heart, it showed that her parents approved that they could court each other. Picking the right person involved a girl putting a 2 leaf clover in her shoe after which the first boy she fancied would be the right one to marry.

If there was a thunderstorm during the wedding ceremony the girl would not have any children. If a sparrow was seen having a bath on the wedding day the husband would always be at the pub. But having a chimney sweep at the wedding was a lucky omen. Well into the 1700s the birth of a child would be attended by several women, known as "God's sisters", initially and this became corrupted to "Gossips". If a baby was expected on 1st May this was such bad luck that steps were taken to speed up the birth, e.g. by mixing horehound with gin and herbs. To bear more children, drink an infusion of mandrake (the root of white bryony) which produces terrible diarrhoea but makes a girl more fertile. Tansy, often found near rabbit warrens, also worked. To induce a miscarriage, chew hemlock. When death occurred in a house, salt was rubbed on the dead person's stomach to stop bloating. The salt could then be kept for later treatment of chilblains. If the family kept bees, they had to be told about the death else they would swarm.

June Meeting. Jim Stebbings from Dereham, near Norwich, gave a talk entitled "Oh yes, it is. The English Pantomime". Pantomime has its roots in ancient Greece. In Roman times a pantomime was often an individual telling stories in mime, accompanied by dance and music. Most people know what they will get at a pantomime and they expect it. The principal boy is traditionally played by a young woman and her romantic partner is usually the principal girl. An older woman, the pantomime dame, is usually played by a man in drag (Dress Resembling a Girl). Audience participation is encouraged, including calls of "He's behind you!" and "Oh, yes, it is!". The good fairy enters from stage right (left from the audience's perspective) and the villain enters from stage left. This comes from medieval mystery play convention where the right side of the stage symbolised Heaven and the left side symbolised Hell. The audience is always encouraged to hiss or jeer at the villain. A slapstick comedy routine (slosh scene) may be performed, often a decorating or baking scene, with humour based on throwing messy things.

John Rich played a key role in the emergence of pantomime. He was a dancer, acrobat and mime artist and during the 1720s he was managing a theatre at Lincoln's Inn Fields. He invented Harlequin, with spectacular performances that

attracted controversy. Critics complained that this foreign entertainment threatened the downfall of Shakespeare and the death of serious theatre. David Garrick was one of the critics but he also realised the commercial potential of this emerging form. He set about changing pantomime's perception, partly by limiting Theatre Royal, Drury Lane pantomimes to the Christmas season. Thus, pantomimes became associated with the fun and frivolity of the holiday season.

Pantomime in Europe first became popular in 16th century Italy with improvised performances taking place outside in streets and marketplaces. Travelling from place to place these actors began to take their shows across Europe. They visited England on several occasions and Shakespeare was impressed. By the 18th century thousands of people, from aristocrats to apprentices, patronised theatres in London every night.

In the early 1800s, pantomime clown Joseph Grimaldi, with white face and red cheeks, became one of the most famous characters in Regency London. Lord Byron gave him a snuff box and Charles Dickens compiled Grimaldi's biography. These early pantomimes were restricted to being silent, or "dumb show", performances with only dancing and gestures. Spoken drama was not allowed in London theatres until Parliament changed this restriction in 1843. Dan Leno was a music-hall performer who created the dame in the late 1880s. He started playing roles like the Queen in Humpty Dumpty, or Widow Twankey in Aladdin and thus he brought cross dressing into panto. He became one of the highest paid comedians in the world.

R. A. Miller
Plumbing and Domestic Heating
Fenside, 71 Willingham Road, Over
Cambridge CB24 5PE
Tel: 01954 203277 Mob: 07831 853885
Email: robert.miller@ntlworld.com



All plumbing work undertaken

- » New boiler replacement and installation with free quotation.
- » GAS boiler and GAS fire servicing
Landlord Certificates.
- » Heating problems - Diagnosis and rectification.
- » General plumbing - taps, washers, pipework, showers, etc.
- » Full and partial Bathroom installation work.

For a reliable and professional service

Robert Miller MCIPHE RP

Office 01954 203 277
Mobile 07831 853 885

Family firm since 1974

PEST PROBLEM?

LOCAL QUALITY SERVICE

pest control/prevention/
emergencies/contracts/quotations/
birds/rodents/insects/more...

t: 01954 230708
m: 07789 502556
w: www.drepestcontrol.co.uk
e: info@drepestcontrol.co.uk



DRE Pest Control Limited

19, WALLMANS LANE
CAMBRIDGE
CB24 4QY

ALAN'S CARPETS

Carpets and Vinyl Supplied and Fitted

We have been in the carpet trade
for over 47 Years!

Samples To Your Home

Measure

Quote

Express delivery & fitting included

Phone 07790 681317

or

07790 544250

CHIMNEY SWEEP

J. L. Wight

City & Guilds Qualified

Advice given /
Problems solved



Certificates issued

Fully Insured



HETAS registered

01954 253315

www.camsweep.co.uk

26 Cow Lane, Rampton

CHIROPODIST/ PODIATRIST

I can offer a professional service

For further details please ring

01954 201256

07494 196065

Biomechanical assessments &
orthotic therapy also available.

Michelle Dolan

*HCPC Registered Chiropodist/Podiatrist
CH34864*

e-mail: michelldolan@outlook.com

JASON KIRBY

Professional Painting & Decorating Ltd

All Aspects of Internal & External Decorating

Period, Residential & Commercial Properties.

Wallpaper & Mural Install

Kitchen Cabinet & Furniture Re-Sprays.

Floor Sanding & Restoration.

City & Guilds, NVQ Qualified.

Service, Quality & Reliability.



01954 211775

www.jasonkirbyltd.co.uk



Swavesey Spartans FC

Another summer passes and our 2023/24 under 18 colts have all left the club; age catches up with us all at some point? Some have signed for local adult teams, mostly for Swavesey Institute who play games on Saturday afternoons. This gives our former players (and parents) a lie in after 11 years of Saturday morning football. The 3 players who played the most were defender Samuel Land (193 games/25 goals), goalkeeper Samuel Dawson (182 games/4 goals) and midfielder Max Jordison (181 games and 102 goals). All 3 featured for Swavesey Institute last season, with both Samuels expected to play in the new season. Max has signed to play 6 months of cricket in Western Australia aiming to be back at Easter for the 2025 cricket season.

Swavesey Spartans main objective is to encourage under 18s to participate in and enjoy the sport of football. We have started 2024/25 season with 12 youth teams spread across the Cambridgeshire FA mini league, the girls league and the colts league. A ladies team and the Walking Football team leave us with 14 sides "on our books". A little delving revealed that Spartans have wider England Football links than would be expected of a village football club. Many of you will know Andy Cranch who is often providing the bar at local events with his Banquet Inn hat on, but fewer of you might know his grandchildren play for Spartans and that Andy is player/manager of the England over 55s. It is understood that watching the Spartans coaches in action allows Andy to keep his notepad current with things to try and surprisingly the odd thing we don't want to see again..... although Spartans is mainly a football club for those under 18, the club does also host Swavesey Spartans Walking Football Club for affiliation purposes. Walking footballer Andy Campbell is Northstowe based now, but originates from Yorkshire. Even a fit person in their 70s still picks up the odd injury and Andy is no exception. Andy needed treatment and went to see Susie Jennings who runs Swavesey Physio. Susie suggested that as part of an injury rehabilitation plan Andy should try the Walking Football club run. Andy was part of the Stagecoach hierarchy, and still conducts the odd interview on BBC Radio Cambridgeshire talking about "bus matters" (if you have been given a face made for radio you can't waste it even in retirement). As one career has wound down, Andy's football career has progressed and he has even captained the England Over 70s side and was in the England squad for the Over 70s world cup in August, hosted in Cardiff.

How about having an Allotment

Hopefully lots of people in the village came along to the Produce Sale, tried some of our fresh fruit and vegetables and perhaps thought it might be fun to have an allotment. You may well have imagined that there would be a huge waiting list and that you'd be "old and grey" before one came up! Well the good news is that at Hale Road the waiting list is very short at the moment, as we have recently had a number of plots change hands.



Having an allotment is not just about the growing. We are a community of all age groups, from those with small children to the retired. There always seems to be someone on the site ready for a chat, often with lots of knowledge to share. We hold various fund raising events during the year including the open day in September that we hope many of the village enjoyed.

Of course having an allotment requires some work, but it keeps you fit! In my opinion its much more fun than a gym and it allows me to be outside in the fresh air too! As a bonus of course you will have the freshest of produce to share with family and friends.

So if you fancy knowing more about having an allotment then please feel free to drop me an email valsage24@gmail.com or give me a ring on 01954 230853. Now is the perfect time to begin your allotment growing journey.

Val (Chair of the Hale Road Allotment and Gardening Association).



HEMINGFORD
ARB

PROFESSIONAL TREE SURGEON

- ⌘ Felling/sectional felling
- ⌘ Crown reduction/thinning
- ⌘ Pollarding
- ⌘ Shaping
- ⌘ Hedge trimming
- ⌘ Stump grinding
- ⌘ Firewood for sale
- ⌘ Free quotation

All aspects of garden and tree work covered.
NPTC Qualified. Fully insured.

Tel: 01480 463674
Mob: 07876 521605
Email: hemingfordarb2016@gmail.com



HEMINGFORD
ARB



A LITTLE BIT OF EVERYTHING

There will be plenty of interest for everyone in our club this term : competitions to keep us on our toes, guidance on what to submit, Members' nights, and illustrated talks from photographic techniques to Travel. (Nothing new, then, our old members will say, that is what our Programme Secretary always gives us, but it might surprise some of our newer members that such a small local club can produce such variety).

Our talks include:

- Long Exposure Photography ' by Anthony Zacarious - 3rd October.
- A Photographic immersion in Havana' by Roy Essery - 10th October.
- How I Process my Nature Images' by Kevin Pigney - 17th October.
- A Taste of Africa ' by Bob Brind-Surch - 7th November.
- Blowing Hot & Cold' by Rene De Here - 28th November. N.B. On Zoom.

Our Competitions are still being supported by critique evenings held a couple of weeks before the event, on Tuesdays by zoom. On October 8th we have help for entries to the Monochrome Trophy on the 24th, to be judged by Paul Radden.

Our first Set subject is ' Abandoned, Broken or Damaged', on 14th November , judged by Jim Bennet, the critique evening is on 29th October. A similar evening to be held on Tuesday, 19th November is for the Colour Print Competition on December 5th.

On Wednesday 16th October we are entering a four-way competition at Ely, we do enjoy meeting other local clubs. We have a Members Night on 21st November, who knows what this will bring? Watch this space. Better still, come along and see for yourself, very small entrance fee for non members.

Mo Hadfield
Swavesey Camera Club
www.swaveseycameraclub.com .uk

Paying too much for your glasses?

Save Money - Buy Direct!
Visit our factory shop to see our fabulous range of Discount Prescription Eyewear

- Hundreds of frames to choose from, including designer frames from Ray-Ban, Polo Ralph Lauren, Oakley, PRADA, Ted Baker and Versace
- Specialists in high and complex prescriptions
- Same-day or next-day service available*
- Save up to 75%
- Huge range of designer sunglasses
- Full range of sports eyewear

Official stockists *subject to prescription and availability





We are open 9am to 5pm Monday to Friday, and 9am to 1pm Saturday



ALL EYES
SPECTACLE MAKERS
SINCE 1947

Call us **01954 231545** Visit our website
www.all-eyes.co.uk

20 Norman Way Industrial Park, Over, Cambridge CB24 5QE

As a nature reserve, Fen Drayton Lakes is managed with specific species in mind. These target species are determined in conversation with our ecologists and are based on the habitats present on site, the UK Red-list of endangered birds, and by the RSPB's list of priority species.

The mosaic of diverse habitats that make up our reserve, including lakes, reedbed, and woodland means that we have a wide range of animals, plants and fungi on site. Each habitat has different target species that we aim to attract, whilst also drawing in many other species that make their homes in similar environs.

As we've mentioned in previous articles, our year is split between the breeding and non-breeding seasons. During the autumn and winter when many of our breeding birds are down in Africa and other creatures are hibernating or just overwintering, we carry out large-scale work to maintain and improve our habitats. Much of this work is carried out rotationally around the site and following specific methods known to achieve the required results.

The culmination of this work is when spring comes around and we carry out our breeding bird surveys. The hope is that numbers of each species have remained stable, maybe even increased, and that areas where work was carried out in the preceding months are being used.

Surveys often start early in the morning, none more so than for Bittern. These specialist reedbed herons are territorial with the males calling from pre-dawn and gradually quietening down as the morning progresses. We have had two calling this year, keeping the number stable over the past few years.



Moorhen chick, one of many species that breed on site – Henry Cook

Other species we survey include a variety of songbirds in the hedgerows and scrubby areas around the site; waders and waterfowl out on the lakes and wetland margins; and gulls and terns on the islands and man-made rafts.

As we enter autumn, we will be reviewing our breeding figures for the year and planning our work for the next few months to keep Fen Drayton Lakes in the best possible condition for our target, and other species.

Upcoming events at Fen Drayton Lakes

Wild(ish) Camping for Groups - A unique opportunity for groups to camp on the reserve.

Wednesday Wander Guided Walk - Join our knowledgeable volunteers for a walk around the reserve.

To see further details and book for the events mentioned above, please visit:

events.rspb.org.uk/fendraytonlakes

Email: fendraytonlakes@rspb.org.uk

Visit rspb.org.uk/days-out/reserves/fen-drayton-lakes

The Royal Society for the Protection of Birds (RSPB) is a registered charity: England and Wales no. 207076, Scotland no. SC037654

MISCELLANY

Over Day Centre Bike Rides and Social Sunday 30th June 2024

87 riders raise £2,049.25 for the Day Centre

Such amazing support from our local cycle club members, families and individuals who enjoyed five rides though the South Cambridgeshire countryside, with starts at Over or Northstowe. The 100k ride worked its way from Over to Potton, Steeple Morden Shepreth, Madingley, Northstowe and back to Over for the after-rides BBQ, bar and live music at the Over Community Centre. The 50k had the same start but returned back via Bourn and Caldecote to Over for the social. And, the three family rides followed the busway cycle track from either Northstowe to Over or Northstowe or Over to St Ives and back to join the party. All children who completed a ride were presented with a finisher medal, to help make the event a memorable day.



Very grateful thanks must go to our most generous sponsors : Law & Lewis, Joiners; All Eyes, spectacle makers; Redmayne, Miller, Rees, estate agents, and Fen Edge Community Association whose funds met all event expenses so that every penny of rider donations will go to the Day Centre, this year to enable garden raised beds and greenhouse cultivation to be added to client activities. Very grateful thanks too to the providers of raffle prizes, the rides marshalls, registration teams, Tesco Bar Hill for drinks and snacks for the family rides, first-aid, mechanical and broom-wagon supporters, photographer and graphic designer and Willighman Wheels and Swavesey & Over Cycling Club who planned the ride routes and signed them. In all, 168 signs were positioned to mark the various routes!!

In all, a lovely day, testimony to great community and local business involvement in support of the Over Day Centre charity. We look forward to you joining us for next year's event, Sunday 29th June 2025.

FDS

(CAMBRIDGE) LTD

01353 779754

fdssales@outlook.com

www.fdscambridgeltd.co.uk



GRAB/TIPPER HIRE



AGGREGATE SUPPLIES



PLANT HIRE

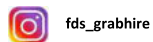
PRIVATE AND TRADE WELCOME

SOILS – SANDS – GRAVELS – SLEEPERS

HARDCORE – DIGGERS – DUMPERS

WOODCHIP – LOGS

CALL US ON 01353 779754 or 07921 777550



Compass Café

"Encompasses the community"

All are welcome on Thursdays
10:30am until 12 noon
At Bethel Baptist Church



Our cakes are home-made,
our coffee and sugar are Fairtrade,
our tea bags are plastic-free.



Priced to be affordable:
Tea/coffee/hot chocolate £1 per mug
and Cakes £1.50 per large slice
Squash is free

Please use the side door to enter, the far side door has a ramp for wheelchair users and pushchairs, and there is a carpet and toys for pre-school age customers.

Compass Café is run as a community event, a place to meet and chat. Your hosts are a group from one of:
Bethel Baptist Church, Girlguiding Units in Swavesey,
Swavesey Primary School PTA, St Andrew's Church
and Swavesey Women's Institute.

When there is a 5th Thursday in the month other groups are invited to run the café to fundraise. Please get in touch with Sue Ellington if you would like to know more. sue.ellington@virgin.net or phone 01954 202923

**Future 5th Thursday dates:
2025: 30th Jan, 29th May (half term), 31st Jul, 30th Oct**

Will Wright Memories Part 2 - Welcome to Germany.

It became blatantly obvious that the head honcho had no intention of paying us the contracted outstanding fee balance, as not only was he nowhere to be seen but no members of staff were prepared to discuss the issue. So the 4 of us got together to work out a plan to, at the very least, cut our losses if nothing else! We played out our last 4 days on the contract but nothing had changed so it was time to play our plan which started with our refusal to move out of the supplied accommodation as a result of which one of the main man's deputy heads called us into his office & questioned what was going on??, where-upon we told him we were still awaiting our contracted money! Needless to say, he was not happy and disappeared into an office. It turned out he was only prepared to give us enough money to get 2 return tickets to Harwich so we said OK, as we had been advised that would probably be the answer. We had pre-paid for the return of the van & gear so Mick & Dave drove off to the ferry port and Paddy & myself remained in Biel for 4 or 5 days and spent most of the time in the club as we had built up a small crew of friends. Then one evening the head honcho saw us & had us pulled into one of his rooms to ask what we were still doing in Biel? To which we could only say that we were not paid our full contract money & we were therefore short of the cash to get our 2 ferry tickets!! He wasn't that impressed but actually arranged for one of his heavies to pick us up in the morning & take us down to the dock & get us a couple of tickets back to the UK.

So far so good but it turned out the train tickets took us to Ostend in Belgium to catch the Dover ferry, so we had to blag our way on the ferry to get an extension which covered our trip to London as inclusive as almost all ferry tickets were in those days. After we explained the situation as to why this had all happened the staff were only too happy to give us the rail journey extension to London - not sure it would be possible in this day & age.

So, there we were at Victoria Station in central London with a couple of pounds in change plus a few marks, but luckily, I had a fair idea of the underground routes etc. so managed to get on a train which took us to the closest station to what was then called the Cambridge Roundabout on the old London North Circular Road next to Edmonton. This was effectively almost the start of the A 10 in those days and we had decided it would probably be a great place for the 2 of us to "thumb a lift" in the direction of Cambridge. Remember this was several years before the advent of mobile phones so we had little choice.

Luckily it wasn't raining and was a little warmer than Kiel which we had become accustomed to and lo & behold within about 20 minutes or so a car pulled over and the driver asked where we were heading for as he was going to St. Neots, when we said Cambridge we were asked to jump on board. Needless to say he noticed our bags & asked if we had been on holiday somewhere? and from that point we had to tell him the history of our journey to Northern Germany and he was pretty shocked to hear the tale. In fact as we were getting closer to his destination he asked where in Cambridge was our destination and actually dropped us off at Station Rd which only left us with a short trip to the rented house in Tennyson Ave.. What a hero the gentleman was.!

When we knocked on the door Dave & Mick and couple of road crew, in whose rented house I had a shared room, they almost all fell on the floor on seeing us. We had made it!

I don't know what the main man's name was but ironically it cropped up again at the back end of the '80s, apparently, he had a 4 or 5 story luxury office building about 100 yards from Marble Arch when he fell from the window onto the pavement below with no other people knowingly involved. Needless to say he didn't survive.

And no Selwyn, I had nothing to do with this incident.

Summer Outdoor Theatre; The Pantaloons

The end of July brought back our annual visit from the travelling theatre company "The Pantaloons" with their own version of the legend of Robin Hood.

The pantaloons are a small company that have revived the centuries old tradition of the travelling theatre troupe (though with the 21st century addition of booking on the internet). We were lucky with the weather, having one of the few dry evenings of this soggy summer giving us a perfect evening of village entertainment.



Many thanks to all who came to support this village event- over 150 people came and we had some very enthusiastic audience participation from the village children. The event has raised £300 donated to the Over Day Care Centre.

We plan to invite "The Pantaloons" back next summer for another outdoor theatre production; in the meantime you can follow them on social media or at <https://thepantaloons.co.uk>.
Simon Shore.

Swavesey 100 years ago (Oct & Nov 1924)

From the Cambridge Chronicle

ADVERT. 10th Oct. 1924

Some daring Aeroplane Stunts and a romance of love and adventure. See "The Broken Wing," Saturday, at the Memorial Hall. Look out for the best Squibs' Picture of all - "Squibs' Honeymoon", next Saturday.

HOCKEY. 10th Oct. 1924

The Swavesey Ladies' Hockey eleven played their first match of the season on Thursday week, when they entertained the Cam first team. Early in the game the visitors scored, but after that Swavesey bucked up and played a much faster game but failed to score up to half-time. In the second half E. Heasman captured one goal and S. Daintree another, the latter five minutes before the end, and the match resulted in a win for the homesters by two goals to one. A word of praise is due to the Swavesey half-backs, whose play throughout was fast and strong.

LOCAL SUCCESS. 10th Oct. 1924

Showing for the first time this year, Mr. R. Barwell, Swavesey Poultry Farm, gained the following successes at the Willingham Show on Tuesday: White leghorn pullet, 1st prize; White leghorn hen, 2nd prize; Rhode Island Red, reserve; white eggs, 1st prize; brown eggs, 3rd prize.

SPILL IN MARKET-STREET. 24th Oct. 1924

An accident, fortunately not attended by serious consequences, occurred in Market-street last Friday afternoon, when Mr. Joseph Froment, cycling out of High-street, came into collision with a pony attached to a buggy driven by Mr. James Norman, of Over, who turned into the street from Church End. Mr. Froment was thrown to the ground and the pony fell on the top of him. He was able to keep the animal under control by holding on to its ear until Messrs. P. Godfrey, R. Hephher and P. Spring, who witnessed the accident, ran up and released him from his precarious position. Mr. Froment escaped with a shaking and bruises on his legs and head. The pony was not injured.

ADVERTS. 24th Oct. 1924

TO-MORROW (Saturday), Sensation, Thrills and Passion, with a sprinkling of Tears, in "A Strong Man's Love," at the Memorial Hall, at 7.15. Next Saturday, a splendid Love Drama, "Mothers-in-Law."

THE ELECTION. 31st Oct. 1924

Three hundred and ninety-four of the 625 electors on the register in the Swavesey polling district (Swavesey and Fen Drayton) voted on Wednesday.

SWANS. 7th Nov. 1924

Nearly the whole of Mere Fen is under water, and swans are to be seen there.

NEEDLEWORK COMPETITION. 14th Nov. 1924

Eight out of the 10 children attending Swavesey National School who entered for the Watkin Needlework Competition, 1924, have been awarded prizes, viz., Class C, Minnie Bull (7s. 6d), Leah Spearman, Lily Spearman, Gwen Dodson, and Ruby Williams (2s. 6d. each); Class B, Violet Carrier, May Parish and Vida Parish.

AN UNFORTUNATE CHILD. 14th Nov. 1924

Henry Oakman, the three-year-old grandson of Mr. E. Oakman, licensee of the New Inn, Huntingdon-road, whose arm was broken by a horse on Sept. 23rd, again fractured the bone on Friday through a fall from a settle. He was attended to by Dr. J. W. Ellis, and on Saturday morning was taken to Addenbrooke's Hospital, where he had already been under treatment, and the bone was re-set.

WHAT POPPIES DO. 14th Nov. 1924

The proceeds from the sale of poppies for Lord Haig's Fund, under the auspices of the Swavesey and District Branch of the British Legion, increase year by year. In 1922 £7 19s. 3d. was realised, viz., : £5 11s at Swavesey (against £5 10s. 11d. in 1923), £2 3s. 4d. at Boxworth, £1 5s. at Lolworth, £1 2s. at Fen Drayton, and 16s. at Conington. The distributors at Swavesey, all of whom worked with great enthusiasm, were the Misses L. Thurlow, J. Willson, L. Melbourne, J. Pettitt, M. Bull, W. Froment, Ivy Thorp, and M. Coulson, and last, but not least, the energetic Secretary of the Branch of the Legion (Mr. A. W. Melbourne).

DANCE. 28th Nov. 1924

There was a rather larger attendance at the fortnightly dance at the Memorial Hall on the 20th inst. than on the previous occasion. Albert Smith's jazz band provided a good selection of music, and excellent light refreshments were dispensed under the superintendence of Mesdames Thompson and Thurlow. Mr. R. Godfrey acted as M.C.

Chris Richardson



REED KITCHENS & BATHROOMS

DESIGN TO INSTALLATION
THE COMPLETE SERVICE

We are a local established company since 1994 that manufactures a range of top quality kitchens and offers them direct to you, at an upfront price that includes everything from design to full installation. It also includes your choice of top range appliances from the likes of NEFF and Bosch.

Makeover your kitchen using our door and worktop replacement service.

Call for a free Brochure



www.kbbi.org.uk

KITCHENS



BATHROOMS



BEDROOMS



Tel: 01954 232899 Mobile: 07711 696015

For more details visit: www.kitchenscambridge.com
email: glenn@kitchenscambridge.com

It Will Probably Be Cloudy...

A guide to the night sky over Swavesey during October and November.

Will comet C/2023 A3 Tsuchinshan–ATLAS be a bright naked eye object in the night sky? By the time you read this you'll probably know the answer!

Scheduled for launch in October 2024, the Europa Clipper will explore Jupiter's icy moon Europa, which scientists believe has an ocean of liquid water under its crust which has more water than Earth's oceans combined, making it one of the only places in our Solar System that humans could inhabit in the future. The spacecraft, set to reach orbit around Jupiter by 2030, will make multiple flybys around Europa at altitudes as low as 25 kilometres above the surface, and will be able to scan almost the entirety of the moon. This mission aims to gather more information about Europa's composition and geology, which will help to investigate whether places underneath the surface have conditions that may support life.

The Draconids meteor shower produces about 10 meteors per hour. It is produced by dust grains left behind by comet 21P Giacobini-Zinner. The shower runs annually from the 6th – 10th October and peaks this year on the night of the 8th. Best viewing will be in the early evening from a dark location. Meteors will radiate from the constellation Draco, but can appear anywhere in the sky.

The Full Moon on 17th October is traditionally called the Hunter's Moon. October is a time to start preparing for the coming winter by hunting or slaughtering animals and preserving meat. It is also called Travel Moon, Dying Grass Moon, and sometimes Blood Moon or Sanguine Moon. This is also the second of three supermoons for 2024.

The Orionids meteor shower produces up to 25 meteors per hour at its peak. It is caused by dust grains left behind by the famous Halley's comet. The shower runs annually from the 2nd October to 7th November. It peaks this year on the night of 21st October.

The Taurids meteor shower is a long-running meteor shower producing 5-10 meteors per hour. It is unusual in that it consists of two separate streams. The first is produced by dust grains left behind by Asteroid 2004 TG10. The second stream is produced by debris left behind by Comet 2P Encke. The shower runs annually from 7th September to 10th December. It peaks this year on the night of 4th November.

November's Full Moon on 15th November is traditionally called a Beaver Moon, after beavers that build their dams during this time of the year and because this was the time of year to set the beaver traps before the swamps and rivers froze. It is also called Frost Moon, Dark Moon, and Mourning Moon. This is also the last of three supermoons for 2024.

On 17th November, Uranus will be at Opposition. The blue-green planet will be at its closest approach to Earth and its face will be fully illuminated by the Sun.

It will be brighter than any other time of the year and is visible all night long. Due to its distance, it will only appear as a tiny blue-green dot in all but the most powerful amateur telescopes.

The Leonids meteor shower produces an average of up to 15 meteors per hour at its peak. It is produced by dust grains left behind by comet Tempel-Tuttle. The shower runs annually from 6th – 30th November. It peaks this year on the night of the 17th November.

The Pleiades star cluster is well-placed in the night sky for observing throughout the whole of November. This open star cluster sits within the constellation of Taurus the Bull and is visible with the naked eye. It's one of the most easily recognisable asterisms (pattern of stars) to spot in the night sky during the winter, with the stars in the cluster glowing a luminous blue. While you may assume there are only seven stars in the cluster, there are actually over 1,000, but only six are usually visible with the naked eye. Stargazers with sharper eyes, however, may be able to spot more members of the family. The Pleiades are very young in the scheme of the Universe at only around 100 million years old, meaning the dinosaurs walked the Earth before these stars were formed! No viewing equipment is needed to see the sisters, but taking a look with binoculars or a telescope will allow you to look closely at the cluster.

Chris & Helen Nunn

Quality Bespoke Secure Storage



Space for all your storage needs

Easy to open & fast to access. High security with PIN codes, HD CCTV cameras & individual room alarms. Choose as little or as much space as you really need, for any length of stay, with no long term commitment. Clean, dry, ventilated & condensation free. Friendly & helpful service with packaging available. Open to customers everyday from 7am to 9pm. Viewings arranged by appointment.

MoreSpace

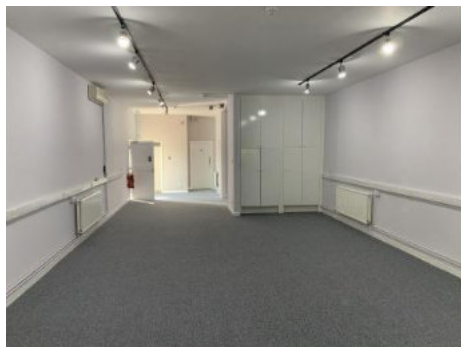
• Home • Document • Commercial

Located at Manor Farm, Graveley, PE19 6PH. Mention SMM22 to receive £5 discount on your first month of storage room rental.

www.morespacestorage.co.uk Call 01480 830130

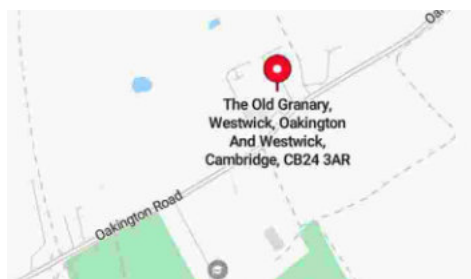
The Old Granary - Westwick (near Oakington)

The property comprises a ground floor open plan office suite within an attractive converted granary. The office benefits from gas fired central heating, ample car parking, bicycle parking, kitchen, WC and showering facilities.



The village of Westwick (near Oakington) is situated approximately 3 miles to the northwest of Cambridge and only 2 miles from the A14 and M11. The Guided Busway, connecting Huntingdon, St Ives and Cambridge, is approximately 150 metres away.

Mains electricity, gas and water are available to the premises.



For more information please contact us:
01223 644210
Rebecca.Haylett@OpenArch.co.uk
www.openarch.co.uk

SWAVESEY LIBRARY moves to a new location within Swavesey Village College.

To facilitate redevelopment of the kitchen and food preparation area within the college, Swavesey library has now moved to a new location – the old stage area within the old hall, just next to our old location.

Firstly, we must apologise to our readers for our poor service throughout the summer whilst we sat in temporary accommodation waiting for our new library to be painted, shelves and computer installed.

Secondly, we hope that by the time you read this article our new brighter, bigger, better library will be fully operational and just waiting for you to come and enjoy.

There's no change to our entrance, it's still on the righthand side of the Gibraltar Lane car park. Just follow the library signs into the college and along the corridor to our new location. The old Stage area within the old hall

**We continue to be open: -
Tuesday afternoons 3.30pm -5.30pm,
Wednesday evenings 5pm – 7pm and
Saturday mornings 10 – 12 noon.**

We continue to provide you with all our normal library facilities and hope to see you soon at our new library.

For further information; - see our web site
<http://www.swavesey.org.uk/community/swavesey-your-library/>

Facebook at Swavesey Village Life or contact

Richard at Richard94hart@gmail.com / 01954 202707 or

Doug at Doughuntuk@yahoo.co.uk / 01954 232478.

Swavesey Memorial Hall – 100 years old (Part 2)

The decision to build a Hall in Swavesey as a memorial to the First World War had been made by the people of the village. The question remained as to how this major project could be financed. In order to solve this problem a committee was formed in May 1919, by the Parish Council, of four parish councillors and eight non-councillors with power to add to their number.

To begin raising the necessary funding a subscription list was opened towards the end of the month, the treasurer being Mr. C. Wood, headmaster of the National School.

The newspaper report at the time stated that:

“One great aim of the Committee is to spare the ratepayer’s pockets. The bigger the contributions to the Memorial Hall Fund, the less danger there is of a demand being made on the rates.”

By the 25th of July it was reported that “The village is about to be thoroughly canvassed for subscriptions to the Memorial Hall Fund. The architect’s plans etc for the proposed building have been provisionally accepted by the Committee and an urgent appeal is being made to all persons interested in the parish for support. The buildings, fittings and furniture are estimated to cost £1,500.”

The villagers took up the challenge to raise the necessary money in many different ways.

A recurring money-raiser was the series of Whist Drives held specifically to raise money for the Hall fund. Over twenty of these took place between 1919 and 1923 with up to 29 tables occupied at one session. Prizes had been donated. The Whist Drive in late October 1919 raised £7.10s for the fund.

Garden fetes were another popular fund-raiser, but the weather for these outdoor events was not always favourable. A very successful fete took place in September 1919 in bright sunshine. “The financial result of the fete and dance resulted in £71.11s.6½d being handed to the Fund Treasurer. The whole of the expenses were borne by the organisers, stall holders and other workers.”

However, on the 6th of August 1920 another fete held in the vicarage gardens under ever increasing rain proved more difficult. One item on the day was Mrs. Jarley’s waxworks, the cast being members of the village who were not seen to advantage because of the weather. It was repeated on the 20th of August in dry conditions proving very popular. Mrs Jarley was Elsie Dodson and her “faithful ally, the indefatigable and garrulous George” was Mr Barwell.

In 1919 a working party of ladies was formed in the village to make garments to be sold for the ‘Swavesey War Memorial and Institute Fund’. They raised over £60 for the fund.

Swavesey school children gave an entertainment in February 1923. About 80 out of the 127 on the National School Register took part, repeating the entertainment the following week.

Many other entertainments raised money for the fund, including dances held in the school and later in the Hall before the opening ceremony took place. Money was also collected at cricket matches.

Balloon races were held at events to raise money. Surprisingly on two occasions the balloons reached Germany, then suffering the effects of the war. On the second occasion letters were sent back to the village showing how inflation was affecting them. One letter pointed out that furnishing a worker’s home would have cost 500 German marks pre-war but would now buy only 2 pairs of stockings. 100 marks which would have bought a sewing machine would now only buy a spool for the same.

One of the biggest fund raisers was the raffling of a bike in September 1923. “The 10 guinea bicycle which has been presented by the Sun Cycle Company for the benefit of Swavesey War Memorial Hall has been won by Mr. Bert Robinson, West-street Over (No. 1,178). The sum of £58.8s has been raised and the whole of this considerable amount will be available for the purposes of the hall, the expenses having been generously borne by Mr. Dick Wilderspin, Swavesey. Mr. Charles Ordish of Luton, whose mother was a native of Swavesey and whose father was a munificent contributor to the building fund, announced the winner.”

With donations, some from Australia and South Africa, and subscriptions, a considerable amount of money was raised, but would it prove enough? To be continued.

Chris Richardson

New Saturday Lunch Club

Over Day Centre

The Over Day Centre is launching a new Saturday Lunch Club at the Day Centre for residents of Over and the surrounding villages. Run entirely by volunteers and will take place on the fourth Saturday of the month, straight after the Memory Café.

The cost is just £10.00 per person and you'll enjoy a main course and dessert, plus tea and coffee. Service will start at 12.30pm.

All food is freshly prepared and we're happy to cater for any dietary requirements or allergies - please call Day Centre on 01954 231807 or 07710 694900, or visit our website: <https://www.overdaycentre.co.uk/whats-on/saturday-lunch-club/>

The menu for each Lunch Club will be available one month before at the Memory Café and on the website.

Doctors Surgeries

Swavesey Surgery

(01954) 230202

Out of hours 111

Website:- www.swaveseyurgery.nhs.uk

Information & updates on facebook page

Over Surgery

(01954) 231550

Out of hours 111

Website:- www.oversurgery.nhs.uk

Information & updates on facebook page

Longstanton

(01954) 207600

Out of hours 111

Website:- www.willinghammedicalpractice.nhs.uk

[nhs.uk](http://www.willinghammedicalpractice.nhs.uk)

See our website at www.swaveseymeridian.org.uk
for the full and latest surgery newsletters. Ed

Bar Hill Surgery

(01954) 780442

Out of hours (01954) 780442 -

call will automatically be diverted

Website:- www.maplebarhill.co.uk

Fenstanton

7E High Street, Fenstanton

01480 461873

Out of hours 111

Website:- www.riverportmedicalpractice.co.uk

[riverportmedicalpractice.co.uk](http://www.riverportmedicalpractice.co.uk)

Over Memory Café

inviting all people living with memory loss, their families and carers, to join us for Music, Refreshments and Fun.

Saturday, October 26th
Saturday, November 23rd
Saturday, December 28th

from 10 am to 12 noon

at The Over Day Centre, 1 Drings Close, Over CB24 5N
wheelchair accessible, free parking available

please visit <https://www.facebook.com/OverMemoryCafe/>



Professional day care and friendship for older people in Cambridgeshire



- Open Monday to Friday, 9.30am – 3.30pm
- Professionally trained carers
- Morning and afternoon refreshments
- Freshly cooked two course lunch from our kitchen
- Activities throughout the day
- Bathing service, in-house hairdresser and podiatry service
- Minibus service available for residents of local villages

For enquiries, please call our Lead Carer, Samantha Hammond on 01954 231807 or email lead.care@overdaycentre.co.uk

And for further information please visit www.overdaycentre.co.uk or our Facebook page

The Over Day Centre,
1 Drings Close, Over, Cambs, CB24 5NZ
Registered Charity No 1196202

FREE TASTER DAY
INCLUDING TWO
COURSE LUNCH



Swavesey Warden Scheme

Service Overview

- Flexible Assistance to meet individual needs to remain living independently at home. Providing reassuring daily contact (Mon-Fri) either in person or by telephone call.
- Support with small practical tasks to ensure a sense of security and wellbeing.
- Free 2 weeks trial.

“ How did I cope before? Bits of shopping, sorting my post, watering plants, filling my bird feeder and bringing me a cup of tea...wonderful. ”

Contact Us

Email: wardens@ageukcap.org.uk

Tel: **07436 102 736**

SCHOOLS INFORMATION



1st Swavesey Scout Group

We are still on the hunt for new leaders. Firstly, for our Squirrels unit. We need adults to help run and organise the group. The main leader Rachael is a well experienced leader and will help any new volunteers. Also, the volunteer experience in scouting is changing to make it easier for us all to do training that is required.

Our other sections need volunteers too. All our sections are almost all full. With more young people more volunteers help keep them safe and it's a chance for learning to happen in both ways. One of the greatest pleasures volunteering in scouting is seeing young people achieve new skills but also, it's a chance for you to learn new skills and new ways of doing things. A young person's perspective can be most enlightening.



If you are interested please email one of the leaders below to start your volunteering journey with us.

As the evenings draw in and the clocks change so do the activities we can do with our multiple young people. We still take full advantage of the lighter evenings until half term to try to be outside as much as possible.



Cooking outside on fire is something we like all our young people to get proficient at. They are all excellent fire starters. Their love of instant noodles is amazing.

You may also see some of the sections hiking around even on the darkest of evenings in these months. They all enjoy it when we finish somewhere they can get chips.

Scouts meet on a Wednesday evening at 7pm. Cubs meet on Tuesday at 6.15pm. Beavers at 6pm on Thursday. Squirrels meet at 4.15pm on Monday.

Beavers (ages 6-8)
john.pawson@1stswaveseyscoutgroup.org.uk

Cubs (ages 8-10½)
steven.wilson@1stswaveseyscoutgroup.org.uk

Scouts (ages 10½ -14)
marian.bentley@1stswaveseyscoutgroup.org.uk





Rainbows, Brownies, Guides and Rangers.

Adventures around the world

1st and 2nd Swavesey Brownies held their first joint Brownie holiday in July at the Jarman Centre, a Girlguiding residential centre near Newmarket, with dormitories with bunk beds for the girls, separate rooms for helpers and leaders, a large indoor space ideal for crafts and games, and kitchen, plus access to 18 acres of private woodland. The theme was 'Adventures around the World', based on a challenge badge which required the girls to complete a range of activities linked to different countries.

The girls arrived on Friday evening and were given a holiday booklet, which included their passport for the weekend, country and activity stickers to stick in their passports and puzzles and colouring in sheets to do during their free time. We started by taking their passport photos and folding their passports, finishing with hot chocolate and songs.

On Saturday, we worked in groups making safari collages, origami animals, truffles, truffle presentation boxes, elephant and llama crafts, weaving wool baskets and making koala pencil toppers out of pipe cleaners. We went outside to compete in the shotput, discus and long jump for a mini-Olympics. Everyone helped to set up and put away during the weekend, with a rota for the girls to help with setting up and clearing away before and after activities and meals. In the evening, after the girls had some free time, we held a campfire where the girls toasted marshmallows, ate S'mores and sang campfire songs.

On Sunday, we finished with a treasure hunt and a mystery, led by our Guide helper, where the girls learned how to take and look at fingerprints and work out who they belonged to. There was an opportunity to finish off crafts from the day before. The holiday ended with a group photo, the girls were presented with the 'I stayed at the house at the Jarman Centre' badge and challenge badge and went home with a bag full of crafts.

We asked the girls for feedback after the event, with one describing the weekend as 'epic'. One of the leaders completed their Going Away With licence, so overnight events can be organised for both Brownie groups again in future.

Come and join the fun, we are looking for adult helpers, please sign up here: www.girlguiding.org.uk/get-involved/become-a-volunteer/register-your-interest/

Please sign your daughters up early for Rainbows, don't wait until she is 5 and her friends have started! We are full with a waiting list. www.girlguiding.org.uk/joinus



INDUSTRY LEADING CAR DETAILING

MOBILE SERVICES BASED IN CAMBRIDGESHIRE

Experience a professional service from a highly trained team of car enthusiasts. We are the industry leading choice for detailing services in the Cambridgeshire area.



Our Services

- ✓ Maintenance Details
- ✓ Luxury Details
- ✓ Exterior & Interior Protection
- ✓ Ceramic Coating
- ✓ Swirl and Scratch Removal
- ✓ Staged Polishing
- ✓ Gloss Restoration
- ✓ New Car Protection

Contact us today

07307 367570

07307 367570



detailedauto.co.uk

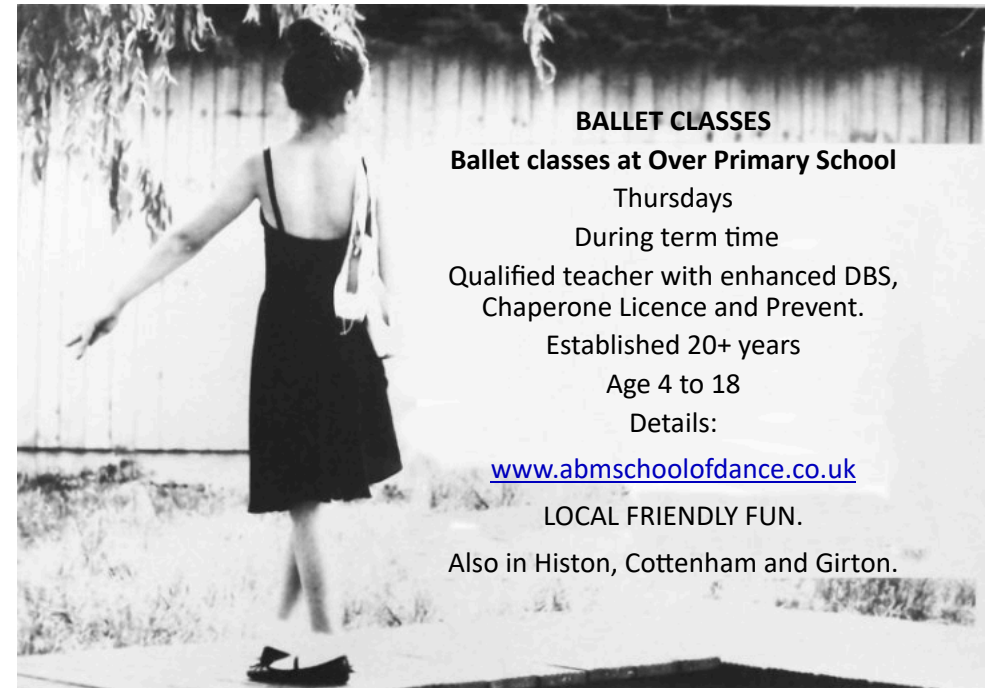
info@detailedauto.co.uk

Swavesey Primary School Early Years and Playwork Centre
Wraparound Care and Early Years Provision - Mon to Fri - term-time
 Registration Fee £15 per family for using Breakfast and/or After School Club

Breakfast Club 7.30 am - 8.55 am
 3+ year olds to Year 6 children: £6 per child per session

After School Club 3.15 pm to 6.00 pm
 For Reception to Year 6 children: £12 per child, family rate £11 per child

Early Years 9.00 am to 3.00 pm (full day) or morning (9-12/1) or afternoon (12-3)
 For 2½ year olds to 4 year olds
 Places for funded children up to 30 hours per week
 Charged sessions:-
 3+ year olds £15 half-day and £30 full-day.
 2 years and 6 months £17 am only
 £5 for lunch hour (12-1)
 For more information and to register:-
www.swavesey.cambs.sch.uk (Select EY & P)



BALLET CLASSES
Ballet classes at Over Primary School
 Thursdays
 During term time
 Qualified teacher with enhanced DBS, Chaperone Licence and Prevent.
 Established 20+ years
 Age 4 to 18
 Details:
www.abmschoolofdance.co.uk
 LOCAL FRIENDLY FUN.
 Also in Histon, Cottenham and Girton.

9.30 am – 10.15 am
 Music Theory classes for ALL

10.15 am – 11.00 am
 Little Rockets for 3-9 yrs
 Join the Band & Find your voice!

11:00 am – 12:00 pm
 The BIG Rock School for
 Drummers, vocalists or guitarists
 with some experience or have
 been playing for some time aged
 10 yrs+

10.15 am – 11:00 am
 The BIG Sing!
 (aka Choir/Sing up – 7 – 77yrs! ALL AGES)

11am – 12pm
 The BIG Orchestra!
 An opportunity for children,
 parents, adults & community in
 an orchestra together.
 Everyone welcome... beginners
 to experienced players!

Swavesey Music School
 admin@swaveseymusic.co.uk
 Swavesey Village College CB24 4RS

LANGLEY & Co.
Accountants

Are you paying too much tax?
Are you claiming all your business expenses?
Do you need help with your accounting and taxation affairs?

We provide a complete range of accounting and taxation services including:

- ◆ Accounts preparation for sole traders, partnerships and small businesses including limited companies
 - ◆ Self assessment preparation and online filing
 - ◆ Bookkeeping including payroll, CIS and VAT
- ◆ Taxation advice
- ◆ Business start-ups
- ◆ Business planning
- ◆ Pension reviews

For a friendly and competitively priced service from local accountants please contact Doug Langley at:

Unit C1, 2 Station Road, Swavesey, CB24 4QJ
 Tel: 01954 231249 Email:doug@langleyaccountants.co.uk

Visit our truly stunning display gardens ...



**Probably the largest display centre in the UK,
selling directly to trade and the general public**

Bannold are one of the UK's largest independent suppliers of natural hard landscaping materials. We stock natural products sourced directly from the UK and around the world enabling Bannold to offer premium products at the most competitive rates to trade and the general public.

- Natural Paving • Setts and Paviours • Stone Walling
- Decorative Gravels • Rockery • Boulders • Waterfeatures
- Topsoils • Soil Improvers • Bark Mulches • Sands
- Hardcores and Cements

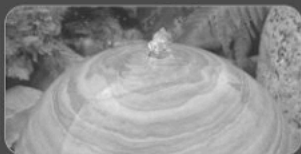


Freephone: 0500 012231
or 01954 231666

Capability Barns
Huntingdon Road
Fen Drayton
Cambridge CB24 4SD

Opening Times:
Mon-Fri 07.30 till 5.00
Saturdays 09.00 till 1.00

www.bannold.co.uk



PARISH & COUNTY NEWS

From Your DC - Sue Ellington

Hello Residents of Swavesey

This month South Cambs District Council has been very generous to Swavesey. Three new grant applications have been successful. £25,000 for the Memorial Hall solar panels and batteries to store electricity so that running costs are reduced and booking charges can be kept to a minimum. £2,000 for the Hale Road allotments to provide a portacabin for safe storage of the mower and equipment and £2,000 for the Fenland Squash Club to improve facilities. Well done all those who completed application forms and promoted their cause. There are many grants available from South Cambs - if you have a good idea or need financial support for a club or project - talk to me or SCDC staff and we can point you in the right direction.

South Cambs District Council have been working hard to find a way to make the Community Warden service sustainable. In March 2024 there was a threat that the service would have to close due to lack of funding but SCDC found money to cover costs until April 2025. They commissioned a research project to determine what all the different 19 community warden services provided. Different village community warden services are financed in different ways using village charities, parish council funds and payments from users. The research project report has just been given to me and identifies a wealth of tasks which wardens perform to support elderly people at home and prevent them needing to be admitted to nursing home care. It estimates that for every £1 spent they provide £3.50 worth of value. This is very valuable evidence to present to the County Council. So next week I shall be spending a lot of time working through proposals to make this service sustainable in the future. Hopefully the County Council, who have the statutory responsibility for providing care, will recognise its value and find some funds as it must be cheaper to enable people to stay at home than pay for them in hospital or a nursing home.

The four day week continues to be a source of discussion but the new Government are more positive about this type of development so I believe it will continue. It is interesting to note which staff are moving on to 5 day week jobs.

Anyway, be in touch if I can help with any problem. cllr.ellington@scambs.gov.uk
07774146331

Best wishes
Sue Ellington
District Councillor Swavesey Ward.

SWAVESEY PARISH

Parish Council News July/August 2024

Firstly this month we would like to thank the volunteers in the village who have been helping us with various projects and maintenance over this summer, we are very lucky to have these wonderful people:

- Spreading bark around the back of the Recreation Green, through to Brick Kiln Drove
- SVC Experience Week students spreading bark & cleaning up the children's play area on the Green
- The many Swavesey litterpickers who are walking around the village helping to keep it litter-free
- The Community Orchard Group helping to maintain the Orchard on Station Rd
- The Hale Rd Allotmenters managing the allotment site
- Residents helping to look after the wildflower and garden areas around the village

Plus the many other volunteers all running events, community groups, clubs, charity trustees and of course this magazine.

During July and August the Parish Council was involved with:

County Council Business

Meeting with CCC Officers to discuss ongoing highways maintenance and how Parish Councils can be involved with longer-term planning for major capital highway maintenance. CCC has received over £55M over the next two years for capital maintenance. Work to repair Fen Drayton Rd is one of the main priorities Swavesey Parish Council is requesting.

The PC has responded to consultations on: continued improvements to public rights of way alongside the A1307; Active Travel Hierarchy, looking at improved maintenance & management of the network of routes for cyclists/pedestrians/horseriders; Community Energy Plan.

The PC has returned comments on the treatment of weeds alongside the roads/pavements this year, asking if first treatments could start earlier in the season next year.

Traffic Calming – the consultation comments on options for Boxworth End-Ramper Rd have been reviewed with CCC Officers and updated options are expected during Sept.

The 20mph zones for villages for this year will be announced by CCC in October.

District Council Business

The PC continues to be involved in the review of how funding is provided for the Community Warden Schemes, of which Swavesey has a very successful scheme.

COUNCIL NEWS

Drainage

PC reps attended an event held by the Environment Agency in August to discuss the condition and maintenance of the St Ives and Brownhill staunches on the river, which have a number of gates permanently shut due to lack of maintenance. This is impacting on river flow downstream and flood risk, as seen over last winter with the prolonged flooding. The PC will be meeting with our new MP, Ian Sollom, in Sept to discuss this. The PC is also working alongside many other parishes and drainage boards between Hemingford and down to Bluntisham to question why the EA has not repaired the staunch gates.

Finance

A grant has been provided from the S106 developer funds held by the PC, to the Memorial Hall for further improvements to its car park to enable easier access to the Hall along a new pathway.

Village Projects

An order has been placed to commission a new Village Sign for Market St, as the old one could not be repaired. The new sign will be exactly the same as the original, made of Oak with a carved and painted sign. It should be ready for installation sometime later this year.

A report on Biodiversity projects around the village was given at the July meeting, further information can be found on the PC website. The PC is awaiting a decision on a grant application to the Combined Authority's Fund for Nature, which should be announced in September.

General

During the summer a bench at the back of the Recreation Green was completely destroyed one evening by fire, which also damaged part of the hedge. No information on how it started was received, however it was reported to the Police. The bench has since been replaced and relocated slightly forward into the Green, with a litter bin also provided.

New litterbins have also been installed in a few other areas around the village, providing larger capacity and additional bins. The PC is also looking at introducing more recyclables bins.

Cllr Rachel Vollerthun was nominated as a PC Trustee on the Frere Cottages Trust.

The PC will be contacting the Village College to discuss parking when there are evening events at the College as over July there were a number of evenings where parking was causing issues in roads around the College.

Further details on everything that is discussed at Parish Council meetings can be found in the Minutes or on the pages of the Council's website at: www.swavesey-pc.gov.uk

Swavesey Parish Council		Website: swavesey-pc.gov.uk
Parish Councillors	Telephone (01954)	E-mail address
Doug Hunt (Chairman)	232478	dhunt@swavesey-pc.gov.uk
Sandie Smith (Vice-Chair)	07806 709939	ssmith@swavesey-pc.gov.uk
James Dodson	230560	jdodson@swavesey-pc.gov.uk
Colin Parsons	230861	cparsons@swavesey-pc.gov.uk
Martin Johnston	200605	mjohnston@swavesey-pc.gov.uk
Warren Wright	203172	wwright@swavesey-pc.gov.uk
Jonathan Kerley	231304	jkerley@swavesey-pc.gov.uk
Rachel Vollerthun	07312 102526	rvollerthun@swavesey-pc.gov.uk
Sue Ellington	202923 / 07774 146331	sellington@swavesey-pc.gov.uk
Sue Rogers	0777 224 7673	srogers@swavesey-pc.gov.uk
Mandy Smith	07909 798968	msmith@swavesey-pc.gov.uk
Clerk: Linda Miller	202982 / 07458 302193	clerk@swavesey-pc.gov.uk
District Councillor: Sue Ellington	202923 / 07774 146331	cllr.ellington@scams.gov.uk
County Councillor: Mandy Smith Papworth & Swavesey Ward	07909 798968	mandy.smith@cambridgeshire.gov.uk
Memorial Hall Administrator: Nicole Mullee	07963 861791	memorialhall@swavesey.org.uk

Swavesey Parish Council meets on the 2nd Thursday of each month for Planning items and on the 4th Monday of each month for Full Council.
All meetings are held in the Memorial Hall at 7.30pm. There is always a 10 minute public forum at the start of the meeting.



The Complete Gas Heating and Plumbing Company

**Plumbing • Heating • Gas
Bathrooms • Water Softeners
Property Maintenance**

**Tel: 01954 204044 • Web: www.entiregroup.co.uk
Email: service@entiregroup.co.uk**

New Website address for Swavesey Parish Council

www.swavesey-pc.gov.uk

In August the Parish Council's website changed domain name to

www.swavesey-pc.gov.uk

All of the email addresses for the Clerk and Parish Cllrs also changed to use the new domain name of swavesey-pc.gov.uk If you have any of our emails in your contacts lists, please make a note to update them. They are all listed in the contacts box elsewhere in this Magazine.

The gov.uk domain is exclusively used by government and public sector organisations at every level in the UK. All local authorities are now advised to move to .gov.uk domains to safeguard their information and security. A gov.uk domain is easily recognisable and acknowledges the link to local government.

Have you visited the Swavesey Parish Council website ?

- For news on local projects, discussion items and issues
- Parish Council Meeting Agendas and Minutes
- Parish Council documents, policies, accounts
- Webpages and links to other village facilities, services and club sites

www.swavesey-pc.gov.uk



You can also find us on Facebook

HIDDEN BEAUTY

BY REBECCA



NAILS | LASHES | WAXING | MASSAGE

Home based salon offering a range of professional beauty treatments. Whether it's a relaxing, stress relieving massage A facial using vegan & cruelty-free Husk & seed products fabulous eye lash extensions or a pampering manicure or pedicure

Hidden Beauty is here for you.

Gift vouchers available

07815 443009
BECCASTART@HOTMAIL.COM
f HIDDENBEAUTYBYREBECCA

The Thomas Galon Charity

Are you aware of this village charity which has been supporting the community, primarily elderly residents, for many hundreds of years?

In 1528 Thomas Galon left agricultural land in his Will for the benefit of the community of Swavesey. A charity was set up enabling the land to be rented out and the income used to help those in need.

Since then the charity has provided winter fuel grants to elderly residents, grants to local doctors' surgeries, Day Centres and Hospices whose services benefit residents of Swavesey and individual grants to residents for various support services (within the charity scheme).

Energy Grant

An Energy Grant Scheme is available for elderly residents. Under this scheme, residents who are aged 70 or over and have lived in the village for 2 years or more can apply to the Thomas Galon Charity for an energy grant, to help with rising energy costs. At the November meeting, Trustees will then consider the amount of grant, depending on funds available, to be paid in the December.

An application form is available if you wish to apply for assistance from this scheme. Please contact the Clerk to the Trustees, Linda Miller at thomasgaloncharity@swavesey.org.uk or call 01954 202982.

The charity trustees meet twice a year in April and November. Grants can be provided to residents for assistance with medical and wellbeing services or items, in particular for elderly residents. Applications can be made in confidence to the charity to be considered at either of these meetings. Please do call the Clerk or talk to any of the trustees if you would like to find out more.

Clerk: Linda Miller email: thomasgaloncharity@swavesey.org.uk
Tel: 01954 202982

Austin Day, Chairman (230050)

Ben Baker James Dodson

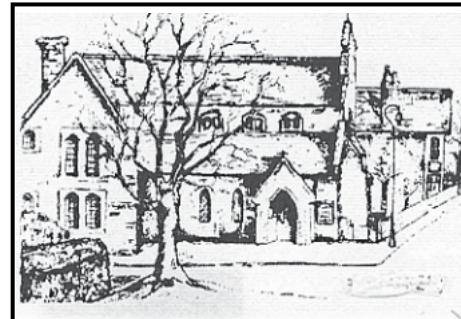
Ollie Hodson Bridget Lofts

Hannah Parish Dudley Morgan

Rob Wick Will Wright

Further history on the charity can be found on the charity website www.swavesey-pc.gov.uk/community/the-thomas-galon-charity/

August 2024



SACRED HEART OF JESUS
Roman-Catholic Parish
19 Needingworth Road, St Ives, Cambs. PE27 5JT

Parish Priest: Rev ThomasJ Walton

Tel: 01480 462 192
www.sacredheart-stives.org.uk
email: office@sacredheart-stives.org.uk

Mass Times:
Saturday 17.00 (Anticipatory)
Sunday 09.00 and 11.00

FLOOR COVERINGS

Cambridgeshire's largest flooring showroom est. 1996

◆
Luxury Vinyl Tiles (LVT)
Laminate - Hardwood & Natural
Over 3500 Carpet samples
Cushion Vinyl

◆
FREE no obligation quotes.
Fitted by fully employed craftsmen with over 100 years experience.

◆
01223 233233

www.floor-coverings.net

◆
Showroom:
Unit 31-32 Dry Drayton Industries, Scotland Road,
Dry Drayton, Cambridge CB238AT
Open: Mon - Sat 9-5



Scan to see our showroom



HOCKEYS
ESTABLISHED 1885

Thinking of a move? We are happy to offer you a free, no obligation valuation of your property.



Call our Cambridge office for a free valuation
(01223) 356054



Call our Willingham office for a free valuation
(01954) 260940



Services at St Andrew's

You are always welcome to join us at 11am on Sunday mornings. We usually hold communion services on the first three Sundays in the month and a service of Morning Praise on the fourth Sunday. There is a special activity for children at all of our morning services.

If there is a fifth Sunday in the month, you might not find us at St Andrew's as we take this opportunity to praise God with the other churches in our 5Folds Benefice.

At 8pm on the first Thursday of each month, we have fifteen minutes of silence and prayer remembering the people of Ukraine and other countries affected by war. This is followed by Compline (a short-sung service of night prayer). By tradition, people then leave in silence.

Wave of Light, Tuesday, October 15th

We would like to invite you to join others across the world by lighting a candle at 7pm and leaving it burning for at least one hour to remember all babies that have died too soon.

The church will be open all day for your quiet reflections and especially between 7-8pm, for those who would like to light a candle as part of the global wave of light. Come and go quietly as you wish.

Alternatively, join the virtual Wave of Light, by taking a photo of your candle and posting it to Facebook, Twitter or Instagram using #WaveOfLight at 7pm local time.

Details from Martin & Diane Herrington: ms_herrington@yahoo.co.uk (01954 230894)

Harvest Festival Service September 29th: 11am

A shared celebration of Harvest with Bethel Baptist Church at St Andrew's with a food collection in aid of St Ives Food Bank.

Service of Remembrance: Sunday, November 10th: 10:50pm

As usual, this will be a joint service with Bethel Baptist Church and will begin outside in the carpark and then move into church for the rest of the Remembrance Service.

Christingle Service: Sunday December 1st: 4:30pm

Please come and mark the beginning of the Advent season with us at our annual Christingle Service which is organised in support of The Children's Society, "a national charity working to transform the hopes and happiness of young people facing abuse, exploitation and neglect."

You can find information about all our services and events on Facebook and online at A Church near You:-

<https://www.achurchnearyou.com/church/2834/service-and-events/events-all/>



Christenings

Would you like to have your child christened? Did you miss the opportunity because of covid or family circumstances? Are you interested in being christened yourself as an adult? Maybe you were christened as a baby or child but now feel that you want to find out more about it all. Whatever the reason, do get in touch with us.

Ministry Team:

Rev'd Jenny Hill (Priest and interim Team Leader): jenny@5folds.org.uk

Canon Jan Payne (Licensed Lay Minister): jan.payne@northstowe.church

Colin Smith (Benefice Administrator): 01954 203459 admin@5folds.org.uk
(Colin works Tuesday to Friday 9.30 am to noon)

Churchwardens Jacqui Fuller: 01954 230774 or Bridget Lofts: bml20@cam.ac.uk

Events at St Andrew's

Outdoor Church Tuesday, August 13th

A big thank you to everyone who came to search for Snowy the missing sheep at our family Outdoors Church session on Tuesday, August 13th. Craft activities were enjoyed, songs were sung and with the help of the children, Snowy was found hiding in a tree.

We are hoping to hold similar sessions in the future.

Harvest Happenings Saturday September 28th 10am – 5pm

Harvest displays, including scarecrows on the theme of favourite films and television programmes, will be on show from 10am. A range of rural skills will be demonstrated from 2 – 5pm when harvest activities will also be available for adults and children to try out. The displays will remain in church during the next week.

Wine Tasting Evening: Friday, October 18th

Jonathan Kinns, our local wine expert will be leading an evening of wine tasting in the Lady Chapel on Friday, October 18th. This will be an opportunity to taste a range of locally available red, white and rosé wines, chosen to show different varieties of grape. Jonathan will be discussing where in the world they are grown, the kind of climate in which they grow best and exploring the differences in style between Old World and New World wines.

See social media for ticket details or contact Jacqui Fuller: 01954 230774 or Bridget Lofts: bml20@cam.ac.uk

If you have any queries about church services or about our events, please contact the churchwardens: Jacqui Fuller: 01954 230774 or Bridget Lofts: bml20@cam.ac.uk



Club Vintage - Wednesdays 2-4pm

A warm welcome awaits older people and the club is dementia-friendly. There is a small £3 weekly charge. Enjoy a rotating variety of activities such as chair-based exercise, singing, bible-based crafts, quizzes, games and entertainment from others.



Thursdays 10:30am-12:00pm



You will receive a very warm welcome at our community run cafe. Enjoy reasonably priced coffee, tea and homemade cakes.

LITTLE LIGHTS - Fridays 10am-12pm

Baby & toddler group. All are welcome, bumps, babies, toddlers, parents and carers. Drop in at anytime for as long as you need. Only £2 per family, including drinks & snacks for all! We hope you can come along and join us!



The Hub - Youth Group - Fridays 7-9pm



Open to all year 6 and secondary aged children. Come along and meet up with friends, chat, play games, listen to music and much more! Snack bar also available. Parents must complete a permission form.

Sunday Services - Sundays 10:45am

You are warmly invited to join us for our weekly services followed by coffee in our compass room. Our services are open to all and are family friendly with children's Sunday School groups for all ages! We have a special Communion service once a month on the 3rd Sunday.

Café Church

Every first Sunday of the month is our alternative all age, café-style service which include refreshments around tables, conversation and maybe even some crafts!

At Bethel we are brought together by our Faith, but what truly makes us family is our passion to serve God and love one another through every season.

We are known for our warm welcome and offer friendship and hospitality to both each other and the local community.



The nights are drawing in, the new school year is well under way and Christmas is fast approaching! Here are some of the activities running this Christmas. More details will be available nearer the time.

Swavesey Village Carols

Saturday 14th from 5pm @ Market Street

Carols by Candlelight

Sunday 22nd at 7pm @ Bethel

Christmas Day Family Service

Monday 25th from 10:45am @ Bethel

CONTACT US

Pastor Bob- pastorbob@bethelbaptistchurch.org.uk

Sue Hope (Secretary) - secretary@bethelbaptistchurch.org.uk

Charlotte Holmár (Administrator) - admin@bethelbaptistchurch.org.uk

www.bethelbaptistchurch.org.uk

www.facebook.co.uk/SwaveseyBethel

The horrific scenes on TV in recent weeks have stirred so much in the life of our world, from scenes of slaughter in the Middle East and Myanmar in Burma to the war torn countryside Ukraine and Russia. The international refugee and displaced people crisis is at an all time high. There have been riots on the streets of the UK, and the self indulgent mudslinging politics in the USA, just a snapshot of our world. What a diet to be fed as we read the press, it seems that good news is at a premium.

The emotions of anger and hatred are almost palpable, and calls for retribution are everywhere. Protests have been filed and politicians look most uncomfortable with the turn of events as sabres are rattled and the beasts of war and propaganda begin to stretch themselves in preparation for revenge.

In every generation there have been those who have gained a profile either politically or as a celebrity, many have used their position to influence life for good and bad. Humility is needed in all of us as we realise that despite our illusions of greatness we are a mist that appears for a little while and then vanishes.

Take a look around you right at this moment, it is incredible to think that the things that we regard as so permanent will one day dissolve and crumble and fade away. Nothing lasts forever, technology has proved that as our phones, tablets etc come to us with built in obsolescence. I have an old phone at home that is like new in condition but in regard to technology it is ancient history!

True depreciation however, is more dramatic than that; the machinery of our bodies for example will run down and slow to a stop one day, they [our bodies] will turn to dust. Everything will go, but the important things will last forever. God's love for us and our expression of his love to others will continue even after the world we know gone. 'We are a mist' and that perspective should enables us to think hard, gain perspective, and realise our humanity is part of something far greater than ourselves.

In our transience let's determine to think of others before ourselves, maybe then the world news won't be so depressing.

Pastor Bob.

Bethel Baptist Church

Community Groups & Charities

Swavesey Sustainability Hub	The Sustainability Hub is a community group that offers space and support for people to realise their ideas for a more sustainable way of life. Contact: rvollerthun@gmail.com Website: www.thesustainabilityhub.biz
Cam Sight	Cam Sight is a local charity which offers support to anyone with a visual impairment, along with their family and carers. We meet on the 4th Wednesday afternoon of each month in Bar Hill. For more information please telephone Joan in Bar Hill on 01954 200622 or Alison at Cam Sight on 01223 420033 or email alison@camsight.org.uk . For more info see:- www.camsight.org.uk
Cambridgeshire Hearing Help	CHH is a charity that helps people with hearing loss. Volunteers service NHS hearing aids and provide batteries and they attend Swavesey quarterly at Thistle Green. Advice on any aspects of hearing loss is available at a hearing help session or by calling the office on 01223 416141, E-mail: enquiries@cambridgeshirehearinghelp.org.uk Website: cambridgeshirehearinghelp.org.uk
Care Network	Care Network supports volunteers, encourages independence and develops good neighbour projects. We provide the Welcome Home from Hospital service across Cambridgeshire. Contact:- Care Network, 5 Broadway House, 149-151 St Neots Rd, Hardwick, Cambridge, CB23 7QJ (tel: 01954 211919). Website: care-network.org.uk/
Compass Cafe	Meets every Thursday morning from 10.30 until 12.00 at Bethel Baptist Church. Contact Sue Ellington on 01954 202923 or sue.ellington@virgin.net
Dog Lovers of Swavesey	Dog Lovers of Swavesey is a friendly group where anyone with a love for dogs is welcome with or without dog. Meetings are on the Recreation Green organised through the Facebook group at https://www.facebook.com/groups/dogloversofswavesey where we also exchange tips, ask for advice or have a laugh. Resources are gathered at https://dogloversofswavesey.co.uk/ . Contact: Matt at matthewyoung1@btinternet.com or Anita at anita.faul@outlook.com Tel 01954 232791
Swavesey Library	A volunteer run community library based in Swavesey Village College. We are able to providing a full range of library facilities being directly linked to the Cambridgeshire County Council library service. For more info see:- www.swavesey.org.uk/community/swavesey-your-library/
The Friends of the Rosie Hospital	The Friends of the Rosie Hospital are helping to make the Rosie a more comfortable environment for mothers and babies. Contact:- Mrs Mary Sanders (Hon Chair) rosieinstitches@ukonline.co.uk Tel 01223 356615
East Anglia's Children's Hospice (EACH)	Put your free time to good use and volunteer at East Anglia's Children's Hospice (EACH) in Milton. Volunteering at a children's hospice doesn't always mean care work and fundraising as there are also tasks such as admin and maintenance of the grounds. Contact:- Clare Bates on 01223 815134, Email: clare.bates@each.org.uk
OWLS Community Car Scheme	Run by DBS checked volunteers the scheme offers a door-to-door service, for medical or some social journeys, to people who are unable to access other forms of transport. Ring 07505 254363 to book a journey, find out more, or to volunteer as a driver Website: http://www.swavesey.org.uk/village-links/owl-community-care-scheme/

CLUB INFORMATION

Army Cadets UK	Swavesey Detachment, No 2 (Cromwell) Company, Cambridgeshire Army Cadet Force meets each Tuesday evening at the Swavesey Village College from 7 pm. New recruits are welcomed from ages 12 years (year 8) to 18 years. www.armycadets.com/county/cambridgeshire-acf/		
Swavesey Five-a-Side Football Club	Currently seeking new members for this long-established club. We play each Wednesday evening from 6:30 to 7:30pm in the new sports hall at Swavesey Village College. Enquiries to Stewart Smith (07803 050234).		
Swavesey Girlguiding	Unit	Evening	Contact
	1st Swavesey Rainbows	Thursdays	caroline@overroad.co.uk
	1st Swavesey Brownies	Mondays	swaveseybrownies@outlook.com
	2nd Swavesey Brownies	Wednesdays	secondswaveseybrownies@outlook.com
	1st Swavesey Guides	Thursdays	swaveseyguides@gmail.com
1st Swavesey Rangers	Thursdays	swaveseyrangers@gmail.com	
Swavesey Spartans	Swavesey Spartans (swaveseyspartans.co.uk) is a Chartered Standard Football Club affiliated to Cambridgeshire Football Association. The club delivers football for children aged 6 and above. The club helps with the transition to open age football. Colts football ceases at the end of a player's Under 18 season. Open age football for men in Swavesey is available through Swavesey Institute FC (separate entry in this section of the Meridian). Swavesey Spartans FC have an open age football team for ladies playing league games on a Sunday. For more information about Spartans please contact Lewis Walsh (swavesey.chairperson@gmail.com) or Neil Jordison (swavesey.secretary@gmail.com or (01954) 204390).		
1st Swavesey Scout Group	All sections meet at the Scout Hut on the SVC site		
	Beavers Day: Thursday 18:00 to 19:00 Contact: John Pawson - Beaver Leader john.pawson@1stswaveseyscoutgroup.org.uk		
	Cubs Day: Tuesday 18:15 to 19:30 Contact: Steven Wilson - Cub Leader steven.wilson@1stswaveseyscoutgroup.org.uk		
Swavesey Early Years and Playwork Centre	Scouts Day: Wednesday 19:00 to 20:30 Contact : Marian Bentley - Scout Leader Marian.Bentley@1stswaveseyscoutgroup.org.uk For any other enquiries please email info@1stswaveseyscoutgroup.org.uk		
	Swavesey Early Years and Playwork Centre are based in their own purpose-built unit on the primary school site. It comprises Early Years children (aged from 2 years and 6 Months) between 9am and 3pm (formerly Swavesey Pre School) and we provide activities and care for primary school aged children before and after school. Breakfast Club runs from 7.30 am to 9am and After School Club from 3.15pm to 6pm. For information please contact Carol Panther (Early Years and Playwork Manager) by email: evandp@swavesey.cambs.sch.uk or by phone (01954) 273312 Ext 2 or 07803 812221.		
Swavesey Community Choir	If you enjoy singing and having fun then come and join Swavesey Community Choir. We meet every Wednesday in term time in Fen Drayton Village Hall, Cootes Lane, Fen Drayton from 7.45pm - 9.30pm. You don't need to be able to read music and no auditions needed, tenor and bass voices particularly welcome. For further details contact Julie Holmes julieholmes78@gmail.com Website: www.swaveseycommunitychoir.co.uk		

British Tang Soo Do Institute	British Tang Soo Do Institute practices the Korean martial art of Tang Soo Do. Our club training covers self defence techniques and many aspects of fitness including flexibility, coordination, conditioning, balance and discipline helping to promote a healthy lifestyle. For further information please contact Master Jeff Cockram on 07863 345681 or jeff@btsdi.co.uk Or see our website: www.btsdi.com
Swavesey Tang Soo Do Club	Swavesey Tang Soo Do have classes on a Monday, Tuesday and Wednesday. Classes are in the primary school main hall at 6pm. The contact details are Master Louise Morton on 07919 050261 or email enquiries@swaveseytsd.co.uk . The website is www.swaveseytsd.co.uk
Allotments in Swavesey	Down Hale Road towards the windmill and on the right there are 61 plots, mostly 150 sq yds (125 m2) in area, backed up by eight water tanks. Large yields of a wide range of high quality vegetable, fruit and flower crops can be grown successfully. If you are interested in joining the waiting list contact Val Sage Tel (01954) 230853
British Legion	For information contact:- Secretary - Angela Dye. (01954) 277453. email: dyeangela0@gmail.com
Swavesey Badminton Club	Located at the Swavesey Village College Sports Centre. The Club offers a high standard of play at club nights on Tuesdays 7pm to 8pm and on Fridays from 6.30pm to 9.30pm. We play competitive badminton in the Cambridge leagues and run men's, women's and mixed teams. Contact Helen Taylor on (01954) 230997 Email: enquiries@swaveseybadminton.net Website: www.swaveseybadminton.net
Swavesey Billiards and Snooker Club	For information/membership please contact Graeme Waites (01954 230113) Email graham.waites566@btinternet.com
Swavesey Camera Club	At Swavesey Camera Club we are proud to cater for photographers of all standards. For more information visit our website at:- www.swaveseycameraclub.co.uk . We meet every Thursday, 7.30 - 9.30pm, Lecture Room, SVC. Non-members welcome - £4 charge (first visit free). For further details please ring Simon Shore (01954) 230848
Swavesey Squash Club	Swavesey Squash Club has three international standard squash courts, in our recently refurbished clubhouse, on the Swavesey Village College site. The club has a number of weekly sessions running, suitable for beginners, improvers, and more advanced players. Unlimited use of the facility from £17 a month. A welcoming and active community club with social events and opportunities for competition. Visit our website for more details or contact Ali Loke on 07776 176866/ ali@alilokesquash.com . www.swaveseysquash.com
Swavesey & Over Cycling Club	We meet regularly throughout the year, with rides most weekends and also weekdays on spring and summer evenings. As a Cycling UK affiliated club our goal is to explore a joint passion for cycling in a safe, inclusive and social way. We aim to organise events throughout the year from day & weekend rides in the UK and long weekend trips in Europe. Contact: John Craven Email: socccommittee@gmail.com Facebook: https://bit.ly/3GJCKsZ SOCC or Website: https://swaveseyovercc.wixsite.com/socc

Over Netball Club	Local friendly club, everyone welcome, from back-to-netballers to seasoned players. We have teams playing in CDNL and Fenland Netball league. Training is on Tuesdays 7-8:30pm at Northstowe Secondary School. First month is free, £15 per month thereafter. Contact overnetballclub@gmail.com for more information.
Over & Willingham Cricket Club	We have 2 open age (adult) cricket teams in the Cambridgeshire Saturday afternoon league playing 40 over cricket between the start of May and the end of August. If you are interested in joining our club, please get in touch with one of the club officials, come along to one of our training sessions or approach any club member on our matchdays (Saturday's). Contact Jane Reeson if you are interested. email - reesonhcx46k@aol.com ; Telephone 07768 540146; or Facebook - Over and Willingham CC, or Website - overandwillingham.play-cricket.com
Swavesey Music School	Meets every Saturday of term time at Swavesey Village College. For further details see: www.swaveseymusic.co.uk/
Swavesey District Bridleway Association	A liaison group representing local horse riders whose main aim is to protect existing and create safe new horse riding links between all local villages. New members welcome. Regular Newsletter/Social events calendar. Please contact Sue Rogers (01954) 232758
Swavesey & District History Society	Meet every third Tuesday in the month, 7.30pm, Carole Shaw room, SVC. Contact Carolyn Redmayne, Secretary (01954) 230037
Swavesey Institute Football Club	Swavesey Institute FC have 2 teams in the Cambs County Saturday afternoon leagues. For information about the club or if you are interested in playing open age (adult) football for the village please contact Martin Pickering on 07737 391445
Linedance	Linedance classes held on Wednesday mornings at the Bethel Baptist Church 9-30 to 11-30 am. Beginners always welcome. Contact Deborah Walker (01954) 231382 Email: deborahwalker105@talktalk.net
Swavesey & Over Conservation Society	At the moment we organise interesting walks If you need a lift: Phone: Trevor Grange - 01954 230119 or Pat Miles - (01954) 780485. Guests Are Always Welcome!
Swavesey & Over Tennis Club	Club night 1 October to 1 April is on Monday, 7.00 to 9.00pm. From 1 April - 30 September there will be club nights on both Mondays and Wednesdays. We welcome new members from anywhere in the locality. Further information from s.taylor996@btinternet.com https://swaveseyovertennis.wixsite.com/sotc
Swavesey RADsOc	Friendly local drama group staging two or three productions a year. New members always welcome. Contact: Nathalie Balzano: nathaliewoodward@hotmail.com Visit our website at www.swaveseyradsoc.org.uk
Swavesey W.I.	We meet every second Monday of the month at 7.30pm in the Memorial Hall. New members are always welcome to enjoy a variety of invited speakers and have a chat and cup of tea/ coffee afterwards. For further information contact Margaret Guest tel (01954) 202757
Women's Walking	Women's Walking on Mondays and Fridays at 10:00am. Meet on Market Street green. Walk for approximately one hour on pathways in and around Swavesey. A chance to exercise and chat. - Reasonably robust footwear recommended. All welcome.

THE MERIDIAN ADVERTISER

October/November 2024

Landscaping & Garden Services

Grower & Supplier of Trees, Shrubs & Hedges



- ✘ Supply and or planting of trees, shrubs and hedges
- ✘ Cutting / Pruning of trees, shrubs and hedges.
- ✘ Land Preparation, spraying, lawn seeding and turfing
- ✘ General maintenance, clearance and repairs
- ✘ Fencing, Gates and Paving

For a FREE estimate phone :- 07786699977

or visit www.eparish-landscaping.co.uk
or Email : edwin@parishnet.co.uk



■ ■ ■ ■ **Sue Allen**
Bespoke Framing

- Photos, prints, oil paintings cross-stitch, mirrors & glass replacement
- Garments including football shirts, christening gowns and first shoes
- Large selection of frame styles
- Memorabilia and baby hand casting
- Based in Over



For all enquiries please contact Sue on **01954 203272** or (m) **07779 528 408**

Sueallenframing@gmail.com
Sueallenframing.co.uk

C & C BLINDS
Specialists in Blinds | Any size | Any colour

Vertical Blinds • Roller Blinds
Venetian Blinds • Repairs • Roman • Pleated
Perfect Fit • Wooden • Roof Blinds
Awnings • Fitting Service

10% OFF
With this leaflet

Free Estimates & 1 Year Guarantee

Tel: 01223 211 171 • **Mob:** 07761 262070
Email: colincoleman64@hotmail.com

ALEX ARTHURS

BUILDING SERVICES

ALL ASPECTS OF BRICKWORK UNDERTAKEN

EXTENSIONS • TRADITIONAL BRICKWORK • ALTERATIONS
GARDEN WALLS • CHIMNEY REBUILDING • REPOINTING
FIREPLACES • STONE SILLS AND THRESHOLDS

PAVING • SLABS & NATURAL STONE • BLOCK PAVING
CONCRETING • GROUNDWORKS • FENCING • DECKING

FOR A FREE QUOTATION & ADVICE CALL ALEX ARTHURS

01954 232050 or 07841 433652



wilderspin
GARAGE LTD

A local family-run business

**MOTOR -
HOME SERVICING -
MOT'S & HABITATION CHECKS
ALL DONE ON SITE**



SERVICING & REPAIRS

EXHAUSTS | BATTERIES | TYRES | CLUTCHES | BRAKES | TIMING BELTS

M.O.T. TESTING CENTRE

CLASSES 4,5 & 7 | MOTOR HOMES | MINI BUSES
CARS | VANS | LIGHT COMMERCIAL

FREE
USE OF
COURTESY CARS

FREE
WINTER
HEALTH CHECK

FREE
COLLECTION AND
DELIVERY SERVICE

OAKTREE ROAD | FEN DRAYTON | CB24 4SS
Tel: 01954 230273 | Email: service@wilderspins.net
www.wilderspin-garage.co.uk



ANDREW EVANS

01954 780 999 – 01223 864335

email: andrew@omegaclean.co.uk

www.omegaclean.co.uk

- ✓ Carpet Cleaning
- ✓ Upholstery Cleaning
- ✓ Tile & Grout Cleaning
- ✓ Leather Cleaning
- ✓ Oriental Rug Cleaning
- ✓ Carpet & Fabric Protection
- ✓ Allergy Relief Treatment
- ✓ Odour Eradication
- ✓ Stain Removal
- ✓ Carpet Fitting

Family Business Since 1980



Flooring & Furnishing Care Specialist

- Carpet Cleaning
- Upholstery Cleaning
- Fine Rugs Cleaning
- Stone Floor Cleaning
- Wood Floor Sanding

Call us now on:

01223 790796

Please quote "Swavesey Meridian"

www.artofclean.co.uk / info@artofclean.co.uk


Art of Clean, Denny Lodge Business Park,
Ely Road, CB25 9PH
www.artofclean.co.uk

RPJ SOLUTIONS

PAINTING SOLUTIONS

INTERIOR AND EXTERIOR

CALL TODAY FOR MORE INFORMATION
AND TO ARRANGE A FREE QUOTE!

 RPJ Solutions

Phone: 07794 732097

Email: ryan@rpjsolutions.co.uk

Web: www.rpjsolutions.co.uk

Sales: Servicing Salt

- Supply & Installation Service
- Servicing & Repairs
- Drinking Water Systems
- Salt Delivery & Collection

www.aquastream-softeners.co.uk

Unit 17 Meridian, Buckingham Business Park, Anderson Road, Swavesey, Cambridge, CB24 4AE

AQUASTREAM

Water Softeners limited

01954 230898



Authorised
Ecowater & Kinetico
Dealership

 Kinetico
water systems

 ECOWATER
SYSTEMS
Your Water. Perfected.



Willingham Auctions Café

Serving food & drinks 7 days a week

Open 9am to 5pm (4pm Sundays)



Serving a selection of cakes, coffees, fresh Lakenham Creamery ice creams and a variety of breakfasts and lunches with Gluten Free and Vegetarian Options.

Thursday to Saturday Evenings we also have Lot 25 Bar, serving a large range of drinks including cocktails over the weekend with food trucks also available every Friday and Saturday evening for your enjoyment.

Find us at 25 High Street, Willingham and enjoy our inside and outside dining areas.

We also have regular event nights,
please see our on-site posters for more information.

We are also dog and child friendly please feel free to bring the entire family.

web: www.willinghamauctionscafe.com

email: hello@willinghamauctionscafe.com

tel: 01954 261252

A.M.S GROUP

Paving & Landscapes Division

Friendly, reliable, family run business
based in Swavesey

All aspects of landscaping and
garden maintenance from fencing, gates,
turfing, patios and artificial grass to Groundworks.

We always take pride in our work and always ensure
that our clients are 100% happy

Please contact us for a free no-obligation quote today
E: amsgroup76@hotmail.com - T: 07741 908344
www.amsgrouppavingandlandscapes.co.uk

Driveways (Tarmac, block pave, resin)
Patios - Fencing - Turfing - Pathways

Digger & Driver Hire Available

Fully insured in public liability

Proud to Sponsor Swavesey Spartans U15s



T
TAIT FINANCIAL
SERVICES

*Feel confident
and in control*

Financial advice for the future you imagine.

We're here to help you feel in control of your
money. Not the other way around.

Let's start a conversation.

James Tait
BA (Hons) DipPFS
Director

01954 231768
07768 305151
taitfs@sjpp.co.uk
www.taitfinancialservices.co.uk  



Tait Financial Services Ltd is an Appointed Representative of and represents only St James's Place Wealth Management plc (which is authorised and regulated by the Financial Conduct Authority) for the purpose of advising solely on the group's wealth management products and services, more details of which are set out on the group's website www.sjp.co.uk/products. The 'St James's Place Partnership' and the titles 'Partner' and 'Partner Practice' are marketing terms used to describe St James's Place representatives.

SJP Approved 30/01/2023

Associate Partner Practice

**St
James's
Place**

SJP15566e B1 (09/22)



Andy Tibbett & Sons Painting & Decorating



- * All internal & external work carried out to a high standard
- * Trade references can be supplied
- * Very competitive pricing
- * A prompt & polite service from a name you can trust

Telephone: 01954 230810

Mobile: 07717 493723

Email: andrewtibbett@hotmail.co.uk





Ash Croft Veterinary Surgery

169 St. Neots Road,
Hardwick, Cambridge CB23 7QJ
Mon.-Fri. 8.30am - 10.30am
4.30pm - 7.00pm
Saturday 9.00am - 11.00am
Sunday 10.00am - 11.00am
Tel: 01954 210250

Unit 1 Pendrill Court, Ermine Street North
Papworth Everard, Cambridge CB23 3UY
Monday, Wednesday, Friday 11.30am - 1.30pm
Saturday 12noon - 1.30pm
Tel: 01480 831615

Laura Wood MA, VetMB, MRCVS
Simon Shore MA, VETMB, MRCVS
Dragan Tomovic BVSc, MRCVS
Consultations by appointment only

G B Builders

NO JOB TOO SMALL

FOR ALL MAINTENANCE RENOVATIONS AND DIY WORK

All general building repairs & odd jobs
Specialist in Painting & Decorating
Groundwork & Grass cutting

- Fencing
- Brickwork & Plastering
- Plumbing
- Driveways, Paths, Patios
- Carpentry
- Slabbing
- Roofing
- Concreting
- Tiling
- Blockpaving
- Drainage
- Guttering

Call Today
07877 742420
Or 01480 437511
g.builders@yahoo.co.uk

BA Building Services

EXPERIENCED LOCAL BUILDER

For all your building requirements

- All aspects of Brickwork
- Extensions
- Patios, Block Paving, Fencing
- Conservatories
- Porches, Doors & Windows
- Tiling
- Bathroom & Kitchens

ALL ENQUIRIES WELCOME

TEL 01954 232 241 MOBILE 07952 339 227

F.W. COOK FUNERAL SERVICE

49 Church Street Willingham

Tel Willingham 260325

Andrew Cook Dip FD Kay Cook Dip FD MBIE

A long established family business providing a personal 24 hour service

Golden Charter pre-payment funeral plans available

COOK'S MEMORIALS

New memorials and refurbishments
Brochures available on request

Swavesey Physio

**Chartered
Physiotherapist**
Susannah Jennings BSc (Hons)
MCSP, HCPC, MAACP



Musculo-Skeletal Injuries:

- Back & Neck Pain
- Muscle & Joint Pain
- Rehabilitation after Surgery
- Postural Conditions (including Post & Ante Natal)
- Mobility Difficulties

Treatments Available:

- Joint Mobilisation & Manipulation
- Soft Tissue Massage and Stretching
- Acupuncture
- Mobility Assessments
- Electrotherapy
- 1:1 Clinical Pilates
- Rehabilitation Programs

31 Thistle Green, Swavesey, Cambridge. CB24 4RJ.
Tel: 07970 548205

Email: susie@swaveseyphysio.co.uk
Web: www.swaveseyphysio.co.uk

M.B. FLACK

Interior & Exterior Painter & Decorator & Repairs

30+ Years Experience
in the trade.

Free Estimates

Telephone
01954 231 915

La' Mac

Hairdressing for all
the family



- ◆ Friendly Service
- ◆ Traditional & up to date styling
- ◆ Fully trained in all colouring techniques
- ◆ Open Tuesday - Saturday (late 7.00pm Wednesday)

We aim to make your visit as pleasant as possible, with a professional and friendly atmosphere to help you relax.

If you are thinking of a change please pop in - we will be pleased to help.

☎ 01954 231 445
2a Market Street Swavesey
Cambridgeshire CB24 4QX

GET REFURBED



XBOX & PlayStation Repairs
Phone Repairs inc. Screens
Nintendo Switch Repairs
Games Console Refurbishments
Phone, Laptop & PC Refurbishments

Sales Repairs Refurbishments Servicing

☎ 07845 283 537
01223 752 947

getrefurbed.com

[@GetRefurbed](https://www.facebook.com/GetRefurbed)



DDB Home Solutions Limited

Making your house a home

We are a company based in Needingworth specialising in kitchen and bathroom installations and can also supply the following services;

- Carpentry and Joinery
- Plumbing
- Electrical installation – Part P registered
- Floor and wall tiling
- Less-abled Bathrooms and Wet Rooms



We are a member of the Institute of Carpenters and also the Guild of Master Craftsmen with over twenty years experience

Visit our website for more information - www.ddbhomesolutions.co.uk
For an informal discussion or quote please contact Darren or Jo Turnbull
Tel: 01480 495984, or email us at Darren@ddbhomesolutions.co.uk



ELECSA





JK Reflections
restore:relax:renew

Massage

Facials

Relaxation techniques

Mindfulness

Tropic Ambassador – freshly made, vegan, cruelty-free, green skincare products. Free Skincare consults in Swavesey/remotely.

Website: www.jkreflections.co.uk

Email: jo@jkreflections.co.uk

Phone: 07714 625243

Facebook: JK Reflections

Gift Vouchers & e-vouchers

Rothwell's Carpet Cleaning

**Carpet, Stone Floor,
Upholstery & Rug Cleaning**

A few points that make us stand out,

Rothwell's has been in business since 1993

We're an honest local family firm.

Our large truck mounted machines mean

more cleaning & drying power

for the best results possible.

Members of both the NCCA and TACCA.

We will move the furniture.

100% satisfaction or it's FREE.

*Call Oliver and Max Campbell
for expert help today.*

01223 832 928

www.Rothwells.biz

Accountancy & Taxation Services



Tax Returns
Business Accounts
Bookkeeping
VAT Returns
Payroll
Audits

L.A.Wells FCCA CTA

Chartered Certified Accountant, Chartered Tax Advisor

4 Scone
Fenstanton
Huntingdon
Cambridgeshire
PE28 9QG

Tel: 01480 466 197



www.lwells.co.uk

LIGHT REMOVALS

Small Houses to Single Items

**ANY DISTANCE
7 Days a Week**

For a Free Quote

Telephone:

01480 352220

07711 556833

www.cambslightremovals.com

R.A. Denton

Painting & Decorating

High Quality



Industrial

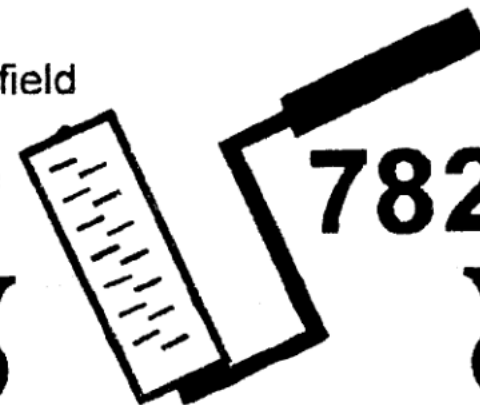
Commercial

Domestic



102, Stonefield
Bar Hill
Cambridge
CB3 8TB

782472



Open 6 days a week



Total Relaxation

at the farmhouse

Tel: 01954 789 344

Aromatherapy, Body Massage, Indian Head Massage, Reflexology, Hot Stone Massage, Hopi Ear Candles, Facials, Nail Extensions, Manicures & Pedicure, Gel Polish, Lash and Brow Treatments, Waxing, Hairdressing

Gift vouchers always available

www.total-relaxation.co.uk

email: total.relaxation@ntlworld.com

The Old Farmhouse, Gladeside, Bar Hill, Cambridge CB23 8DY

Struggling with Long Covid? Living with chronic pain? Can't get a good night's sleep?

Five Element Acupuncture

- diagnoses the root cause
- calms your nervous system
- relaxes tense muscles
- rebalances your body
- nourishes mind and spirit

Discover how working on your health with a fully qualified Five Element acupuncturist can transform your outlook.

Phone or email today for your FREE 20-minute consultation with Willingham acupuncturist Kaye Rooney
Lic. Ac., B.A Hons. MBACc
kaye@kr-acupuncture.com
07593 058748



Find out more at
kr-acupuncture.com







Eyes of Swavesey

Opticians



Progress House (Coulson's Building),
Rowles Way, Buckingway Business Park,
Swavesey CB24 4UG

T: 01954 231158
E: info@eyesofswavesey.co.uk
W: www.eyesofswavesey.co.uk

'Seeing things differently'
Experts in Eyecare since 1994. Our expert team combine the latest diagnostic technology with our carefully selected eyewear collection and products to help you look and feel your best.







Now only
£895*
for a fully fitted electric garage door.

WAS £1354 INCLUDING VAT.

Gotta get a Garolla.



Garolla garage doors are expertly made to measure in our own UK factories, they're strong and solidly built. The electric Garolla door rolls up vertically, taking up only 8 inches inside your garage, maximising valuable space. Our experienced installers will fit your new door and they'll take away the old one too, so there's no mess.

Give us a call today and we'll come and measure up **FREE** of charge.

GAROLLA
ROLLER SHUTTER DOORS 

www.garolla.co.uk

CALL US TODAY ON:
01954 750 018
MOBILE:
07537 149 128

LINES OPEN 7 DAYS A WEEK

*Offer valid for openings up to 2.6m wide & including 2 remote controls, 55mm white slats, internal manual override.

Swavesey Windmill

Hale Road Swavesey Cambridge CB24 4QP

Tel: 01954 232 247

Fantastic function hall with licensed Bar available for hire for any event, set in the grounds of The Windmill.

Private parties, Fundraising
Charity Nights, & Band Concerts!

Licensed with Cambridge County Council
For Weddings, Civil Partnerships,
& Baby Naming Ceremonies

To book to view or hire please phone Pam or Lisa.
To keep updated on events follow
Swavesey Windmill on Facebook



Contact us:
david@rosegatefarm.co.uk
07922 588171



Rose and Crown Road Road, Swavesey

Butchery Open Fridays (8.30 am - 5.30 pm) & Saturdays (8.30 am - 1.30 pm)

www.rosegatefarm.co.uk

Bespoke Butchery – butchered to suit your requirements

BEEF

- Primarily from our own Hereford / Angus herd
- All at least 21-day aged

LAMB

- Swavesey born and bred
- individual cuts, or ¼, ½ or whole lamb packs available

PORK

- Bred & reared here at Rosegate Farm.
- Home-made sausages, dry-cured bacon and gammons (smoked and unsmoked)
- Cooked Ham

CHICKEN (sourced from Diaper Poultry)

- Sutton Hoo Free Range
- St George Chicken

BBQ Meats – Burgers – Kebabs – Glazes

See you in the butchery!



YOUR COMPLETE

GAS, HEATING AND PLUMBING COMPANY

- PLUMBING
- HEATING
- GAS
- BATHROOMS
- WATER SOFTENERS
- PROPERTY MAINTENANCE



01954 204044
entiregroup.co.uk
service@entiregroup.co.uk

A distributor for Harvey Mini max water softener



AJ Carpentry



Local, family run business who thrive on transforming project dreams into a stunning reality!

Extensions – Conversions – New Builds – Groundworks – Bathrooms

Kitchens – Flooring – Electrical works – the list is endless!

www.ajcarpentry.co.uk

07989 341724 / 07812 671495

Stamp Chiropody & Podiatry

Casey Stamp MCPod BSc (Hons)

HCPC registered CH15068



- General chiropody - nails, hard skin & corns
- Diabetic foot care
- Children's Feet - Growing pains, Verrucas, etc.
- Sporty Feet & associated injuries + pains
- Ingrowing toe nails
- Custom made Orthotics/insoles
- Dancing feet - we'll keep you on your toes
- Biomechanics & Gait analysis

New Clients Always Welcome

Find us at:

1E Highgate Farm,
Over Rd, Willingham,
CB24 5EU

Tel: 07807 505534

www.stamppodiatry.co.uk

CHIMNEY SWEEP Cambridgeshire Trading Standards Approved



- Fully Insured
- Enhanced CRB Check
- Certificates issued
- Bird nests removed
- All types of chimney swept
- No Mess, No Fuss



MAKE AN APPOINTMENT
TODAY WITH

SWEEPOVER

Tel: 01954 230777

Mob: 07779711458

www.sweepover.co.uk

19 New Road, Over, CB24 5PJ



The Ultimate
FLOOR SANDING
Company

AFFILIATED SERVICE PROVIDER

Dust Free Wood Floor Sanding & Restoration

Is your Wooden Floor in need of
Sanding?

Call us today **01223 863 632**

Please quote "Swavesey Mag"

www.floorsandingcambridge.co.uk

Vintage travel your own pool

...holidays with added peace of mind.

Your Local
Travel
Company

Handpicked Villas with private pools.
Over 30 years of creating perfect holidays.
Book with confidence.



• Greece • Spain • Lanzarote • Balearics • Portugal • Turkey • France • Italy • Croatia • Cyprus

01954 261 431

www.vintagetravel.co.uk



MAGAZINE ADVERTISING RATES

ADVERTISING RATES AS FROM FEBRUARY 2024.

For a one year inclusion i.e. six issues.

Size	Advertiser	Magazine
Full page	£260	£345
Half page	£135	£195
Quarter page	£90	£120

The following rates are for one inclusion only and as a premium rate is already charged will be positioned in the magazine section:-

Half page one inclusion only £90

A small charge may be made for creating and amending artwork

For all advertising details please contact:

April Martin Tel: 01954 200533 or

Email: adverts@swaveseymeridian.org.uk



Plumbing and heating supplies
to the trade and public



We are a local independent company supplying
all your plumbing & heating needs, including:

**Bathroom Taps • Boilers • Bathroom Suites
Underfloor Heating • Central Heating Radiators
Heated Towel Rails • Showers • Kitchen Taps
Sinks • Baths • Sanitaryware
Plastic Plumbing Systems • Fittings**

Do not hesitate to ring, email or visit...

Unit 10, Norman Way Industrial Estate, Over, Cambridge CB24 5QE.
Tel: 01954 230268. E-mail: info@dandtsupplies.co.uk. www.dandtsupplies.co.uk

EXTRA MAGAZINES

Send a Meridian Magazine subscription to your favourite Auntie, or to a friend who has recently left the village.

Six issues (one year) costs only £15.00.

Send a cheque (made out to 'The Meridian Magazine') and the address of the recipient, to:

Neil Jordison, Meridian Subscription
33 Thistle Green, Swavesey, Cambridge, CB24 4RJ

NOTIFICATION OF MAJOR EVENTS

Please use this form to notify us of any major events you are organising so that we can publish the dates in the magazine and on the website at www.swaveseymeridian.org.uk

It is hoped this will avoid major events clashing on the same day. Please send to the Editor, 14 Black Horse Lane, Swavesey.

Event _____

Location _____ Date _____ Time _____

Contact Name _____ Tel No. _____

BIRTHDAYS, ANNIVERSARIES & SPECIAL OCCASIONS

If you would like to mark any occasion that is special to you or somebody that you know by announcing it in this magazine, please fill in the form below.

Also supply your name and contact details, and return to the Editor by the copy date.

We will endeavour to include it in our next issue.

SHORT MESSAGE:

QUIZ NIGHT

Join us for our annual quiz night with raffle at **OVER COMMUNITY CENTRE**

Friday 11th October
7.30pm start

£8 per person
Up to 8 people per team

Payment by cash or credit card on the night
Please book in advance if you can by calling **01954 231807**

Over Community Centre, 16 The Doles, Over, Cambridge CB24 5NW

Cash bar run by the Community Centre for evening refreshments,
open from 7.00pm

USEFUL TELEPHONE NUMBERS & WEBSITES		
Doctor's Surgery (Swavesey)	01954 230202	
Doctor's Surgery (Over)	01954 231550	
Police:		www.cambs.police.uk
Emergency	999	
All Non Emergency Calls	101	
Swavesey Parish Council	01954 202982	www.swavesey-pc.gov.uk
Swavesey Pre-school Enquires	01954 273312 Ext 2	eyandp@swavesey.cambs.sch.uk
Swavesey Primary School	01954 273312	www.swavesey.cambs.sch.uk/
Swavesey Village College:	01954 230366	www.swaveseyvc.co.uk
Community Office	01954 234488	www.swaveseyvc.co.uk/community-education/
Swavesey Post Office	01954 232311	
Cambridgeshire County Council:		www.cambridgeshire.gov.uk
General Enquiries	0345 045 5200	
Library Service	0345 045 5225	www.cambridgeshire.gov.uk/residents/libraries-leisure-culture/libraries
South Cambs District Council	01954 713000	www.scambs.gov.uk
Electricity (UK Power Networks):		
Emergency & Power Cut Report Line	0800 783 8838	www.ukpowernetworks.co.uk
Gas Emergencies (National Grid)	0800 111999	https://www.nationalgrid.com/gas-transmission/safety-and-emergencies/emergencies-and-safety-advice
Water (Cambridge Water Company) Leak:	0800 316 7676	www.cambridge-water.co.uk
Sewage (Anglia Water) Emergency	03457 145 145	www.anglianwater.co.uk
Environment Agency (Flood Line):	0800 807060	www.environment-agency.gov.uk
Samaritans	116 123	www.samaritans.org
Addenbrooke's Hospital:	01223 245151	www.addenbrookes.org.uk
Hinchingbrooke Hospital	01480 416416	www.hinchingbrooke.nhs.uk
NHS Direct	111	111.nhs.uk
Airports + Road & Rail:		
Local Taxi: Alpha Cars	01954 232300	www.alphacarsonline.co.uk
Gatwick	0844 892 0322	www.gatwickairport.com
Heathrow	0844 335 1801	www.heathrow.com
Luton	01582 405100	www.london-luton.co.uk
Stansted	0808 169 7031	www.stanstedairport.com
Traveline (Bus Coach & Rail)	0871 200 22 33	www.traveline.info
Local Timetables:		
Cambridgeshire Bus Information		www.cambridgeshirebus.info
Stagecoach	01223 433250 0345 241 8000	www.stagecoachbus.com
National Express Coaches	03717 81 81 81	www.nationalexpress.com
Whippet Coaches	01954 230011	www.go-whippet.co.uk
National Rail	03457 48 49 50	www.nationalrail.co.uk
Veterinary Practices:		
Village Vet (Longstanton)	01954 780027	www.villagevet.co.uk
Ash Croft (Hardwick)	01954 210250	www.ashcroftvet.co.uk

Swavesey RADSOC Presents

The Wind in the Willows

... the Pantomime!

A new family pantomime by Matt Isham

17th -19th January 2025

Swavesey Village
College

For info and tickets visit

www.swaveseyradsoc.org.uk