

THE MERIDIAN SWAVESEY



No. 213 April/May 2025



NEW SATURDAY LUNCH CLUB

Welcoming all residents of Over and surrounding villages to join us for lunch at the Day Centre on the fourth Saturday of each month, service starting at 12:30 following the Memory Café

- £10.00 per person, main course & dessert, includes teas & coffee
- all food is freshly prepared and we're happy to cater for any dietary requirements or allergies

to book your place or for more information visit our website www.overdaycentre.co.uk/whats-on/saturday-lunch-club/ by email: saturdaylunchclub@overdaycentre.co.uk or please call: 01954 231807 or 07710 694900

1 Drings Close, Over, Cambridgeshire CB24 5NZ02

Saturday, April 26
Saturday, May 24
Saturday, June 28



EDITORIAL

By the time you read this hopefully we will have lost the grey skies and had some blue sunny skies! It has been a long winter but your Meridian keeps you up to date, however, we can only do this if you tell us! Yes I know the deadline date can prove a problem but we have to fit in with the printers.

Please note we are having to restrict articles and club reports to a single page to limit the size of the magazine and the resulting printing costs.

Do you have an event coming up in May or June? if so tell us so we can tell others, not everyone has Facebook or a strong signal! (your editor for example).

Enjoy spring

Editor.

Deadline for the next edition is 20 April for the June/July issue

IN THIS ISSUE ...

Front Cover - The New Sign by Edwin Parish	
Inside Front Cover - ODC - Lunch & Memory Cafe	
Inside Back Cover - ODC 5 Pub Challenge	
Back Cover - St Andrews Plant Sale	
Editorial	page 1
Meridian Committee	page 2
Major Events List	page 3
Dates for your diary and forthcoming events	page 4
New Village Sign	Page 5
Club Reports	Page 6-12
Miscellany	page 13-23
Medical News	Page 24 -25
School Information	page 27-30
Parish and County news	page 31-34
Churches	page 36-39
Community Groups & Charities table	page 40
Club Information	page 41-43
Advertiser	Page 44-58
Advert Costs, Major Events & Birthday forms	Page 58-59
Useful Telephone Numbers	page 60

Over Memory Café

inviting all people living with memory loss, their families and carers, to join us for Music, Refreshments and Fun.

Saturday, April 26th
Saturday, May 24th
Saturday, June 28th

from 10 am to 12 noon

at The Over Day Centre, 1 Drings Close, Over, CB24 5NZ
wheelchair accessible, free parking available

please visit <https://www.facebook.com/OverMemoryCafe/>

MERIDIAN COMMITTEE

Editor:	April Martin	Tel: 01954 200533
Treasurer	David Gedny	Tel: 01954 231305
Production:	Alan Morris	Tel: 01954 202664
Advertising:	David Gedny/April Martin	Tel: 01954 231305 / 01954 200533
Distribution	Neil Jordison	Tel: 01954 204390
Subscriptions	Neil Jordison	Tel: 01954 204390
Complaints	Maureen Hadfield	Tel: 01954 230414
Proofreading	Alison Lucas	Tel: 01954 232984
Website:	Alan Morris www.swaveseymeridian.org.uk	Tel: 01954 202664
Emails:	editor@swaveseymeridian.org.uk	
	adverts@swaveseymeridian.org.uk	
	webmaster@swaveseymeridian.org.uk	
	distribution@swaveseymeridian.org.uk	

Major Events List

This list is intended to avoid major events clashing on the same day. It will only work if we are advised of all such events, so please let us know as soon as you can confirm the details.

A form is available at the back of this magazine. We will list them in this section of the Magazine and also on our website at:-

www.swaveseymeridian.org.uk

Saturday 12 April	St Andrews	Easter Fair
Wednesday 16 April	Parish Council	Annual Parish Meeting
Saturday 17 May	St Andrews	Plant Sale
Sunday 15 June	Swavesey Spartans	Spartans Day 09:30 to 15:30 at the Village Green
Saturday 5 July	St Andrews	Teddy Bear Zip Wire Challenge:

SUMMIT



LANDSCAPES

PAVING - DRIVEWAYS - BRICKWORK
CARPENTRY - GROUNDWORKS





www.landscapingpaving.co.uk
PHONE: 01223-929394

This space could be used to advertise your Business

Full Page, Half Page & Quarter Page spaces are available in the Magazine Section (dispersed among the articles) or in the Advertiser Section (at the rear of the magazine)

R A Miller
Plumbing and Domestic Heating
All plumbing work undertaken
New boiler replacement and installation
GAS boiler and GAS tap servicing
Leak and Corrosion
Heating systems - Oil, Gas, and Electric
General plumbing - taps, washers, showers, etc.
Full and partial Bathroom Installation work
For a reliable and professional service
Robert Miller MCIPHE RP
Office: 01954 203 277
Mobile: 07851 803 885

Paying too much for your glasses?
Save Money - Buy Direct!
Visit our factory shop to see our fabulous range of Discount Prescription Eyewear
Hundreds of frames to choose from including designer frames from Ray Ban, Polo Sport, Lenses, Oakley, PRADA, Ted Baker and Versace
Specialists in high and complex prescriptions
Same-day or next day service available
Save up to 75%
Huge range of designer sunglasses
Full range of sports eyewear

POLO **PRADA** **TED BAKER** **VERSACE**
We are open 9am to 5pm Monday to Friday, and 9am to 1pm Saturday
Call: 01954 231545 www.all-eyes.co.uk
38 Norman Way Industrial Park, Over, Cambridge CB24 1LZ

FDS
(CAMBRIDGE) LTD
01353 779754
fbsales@outlook.com www.fds.cambridgefdsltd.co.uk

GRAB/TIPPER HIRE
AGGREGATE SUPPLIES
PLANT HIRE

PRIVATE AND TRADE WELCOME
SOILS - SANDS - GRAVELS - SLEEPERS
HARDCORE - DIGGERS - DUMPERS
WOODCHIP - LOGS
CALL US ON 01353 779754 or 07921 777550

Contact : adverts@swaveseymeridian.org.uk



DATES FOR YOUR DIARY



April		
Friday 4	Refuse Collection	Black Bin Collection
Thursday 10	Parish Council	Planning Meeting
Friday 11	Refuse Collection	Green & Blue Bins
Saturday 12	St Andrews	Easter Fair
Monday 14	Refuse Collection	Black Bin Collection (Note Monday)
Wednesday 16	Parish Council	Annual Parish Meeting
Friday 25	Refuse Collection	Green & Blue Bins
Monday 28	Parish Council	Full Council Meeting
May		
Friday 2	Refuse Collection	Black Bin Collection
Thursday 8	Parish Council	Planning Meeting
Friday 9	Refuse Collection	Green & Blue Bins
Friday 16	Refuse Collection	Black Bin Collection
Saturday 17	St Andrews	Plant Sale
Monday 19	Parish Council	Full Council Meeting
Friday 23	Refuse Collection	Green & Blue Bins
Friday 30	Refuse Collection	Black Bin Collection

Swavesey Village Sign

A new Village Sign was installed at the end of January in Market St. On a day with perfect weather to show it off.

The sign has been commissioned by the Parish Council and carved by Stuart Faben (Faben Joinery), here in the village. The old sign had badly deteriorated, having been in place since 1979. It had originally been hoped the old sign could be renovated, however on closer inspection it was obvious that it had gone beyond repair.

The new sign features all of the carvings of the original and their significance is detailed below.

Swan - Prior to the Conquest the 'principal' manor of Swavesey belonged to one Edetha/Eddeva (or more commonly Edith the Fair) the Consort/Queen of the Saxon King Edward the Confessor (d.1066). The 'royal connection' with Swavesey is represented by the Royal Swan, classical bird of Beauty (for Edith the Fair) at the top of the sign.

Shield - With the arrival of Norman conquerors, and presumably on the compilation of the Domesday survey the 'favoured' manor of Swavesey was given, together with the church and other choice lands in East Anglia, to Count Alan de la Zouch, Earl of Brittany, William I (the Conqueror)'s son-in-law. Count Alan, not only held the 'main' manor, together with the church, a mill and a fishery on the River Ouse, but also land in surrounding villages and was perhaps the biggest lay landowner in the area. The de la Zouch family heraldic shield with nine gold coins is portrayed centrally on the sign.

Cross – a white cross on a blue background, the Saltire, for St Andrew. St Andrew's church stands in Swavesey.

Ship's Wheel - may be a reference to the village serving as a port.

Eel – A reference to the thousands of eels which were caught in the river and brought into the village for trade.

Snail - this appears to be a nod to the badge of the ancient Hoddendod Manor that was once located in Swavesey. Swavesey's second Manor was situated to the south of Market Street. This strange old name is Anglian dialect for the Common or Garden Snail and the snail is depicted to the right on the sign.

Beneath the shield with nine gold coins is the village's motto: "Steadfast in Work & Play"

On the back of the sign is a painted white cloud on a light blue background. Inside the white cloud is the following text: "To commemorate Silver Jubilee, Queen Elizabeth II, 1952-1977. The original sign had been commissioned by the Swavesey WI and was unveiled in 1979 by Mrs Ethel Hepher.

A bronze plaque originally on the concrete base holding the pole on which the village sign is attached will be replaced with the original wording as shown below and with the date of the new sign:

The Village Sign was originally unveiled on Sunday 2nd September 1979, by Mrs Ethel Hepher, a Founder Member of the Swavesey Womens' Institute and Former Chairman of the Parish Council, County Councillor and Alderman
A new Village Sign was installed in January 2025

CLUB REPORTS



Swavesey WI News

Meetings coming up:

April 14th	"Wherever I lay my hat". Talk by Susan Widlake
May 12th	A talk by Suffolk and Cambridgeshire Blood Runners

At January's meeting, members enjoyed taking part in an auction of pre-loved articles. Glesny Sheppard was auctioneer and this proved a fun evening with a wide selection of items to bid for! Money raised was for WI funds.

In February, we welcomed Amanda Sutherland to our meeting who spoke to us about her "Creative Journey" her career in costume design. From being 'Fashion Student of the year' at Ware College to attending the London College of Fashion. She recalled the various jobs she has had and all the experiences gained. Her jobs ranged from being a Buyer for the Royal Opera House in London, to working on costumes for musicals, Eastenders, various Bond films, her list was endless!

She had a strong interest in Bridal wear and went on to organising Wedding Fayres.

Amanda brought with her a wonderful selection of her own designer merchandise which she now sells mainly online. Hats, scarves, bags and jewellery an amazing array of goods. Our members really enjoyed trying on her hats and taking home some shopping!!

Amanda is very talented, gifted and original in all her designs. An excellent speaker, we were all enthralled by her talk and her work experience.

If you are new to the village and would like to join a very lively and thriving WI give us a call. For further information please ring Glesny Sheppard 01954 201731 or Deirdre Burgess 01954 230897.



ALAN'S CARPETS

**Carpets and Vinyl
Supplied and Fitted**

We have been in the carpet trade
for over 47 Years!

Samples To Your Home

Measure

Quote

Express delivery & fitting included

Phone 07790 681317

or

07790 544250

CHIROPODIST/ PODIATRIST

I can offer a professional service

For further details please ring

01954 201256

07494 196065

Biomechanical assessments &
orthotic therapy also available.

Michelle Dolan

*HCPC Registered Chiropodist/Podiatrist
CH34864*

e-mail: michelledolan@outlook.com

CHIMNEY SWEEP

J. L. Wight

City & Guilds Qualified

Advice given /
Problems solved



Certificates issued

Fully Insured



HETAS registered

01954 253315

www.camsweep.co.uk

26 Cow Lane, Rampton

JASON KIRBY

*Professional Painting
& Decorating Ltd*

All Aspects of Internal & External Decorating
Period, Residential & Commercial Properties.

Wallpaper & Mural Install

Kitchen Cabinet & Furniture Re-Sprays.

Floor Sanding & Restoration.

City & Guilds, NVQ Qualified.

Service, Quality & Reliability.



01954 211775

www.jasonkirbyltd.co.uk

Swavesey & District History Society

January meeting. About forty attended the talk on "A Very English Dynasty: Four Generations of the D'Oyly Carte family". Jim Stebbings of East Dereham in Norfolk gave a very detailed presentation. In 1839 Richard Cart (1808 – 1891), a respected flautist and partner in the Rudall and Rose Company, makers of musical instruments, married Eliza, who traced her descent to the Norman "D'Oyly" family. They extended the name of their first son Richard born in 1844, to Richard D'Oyly Carte to distinguish him from an already well-established musician. On leaving university in 1861, he entered his father's business and also began to compose operettas before theatrical management began to take over his activities. His early clients included Oscar Wilde and Sir Henry Morton Stanley. In 1875 he produced 'Trial by Jury,' a comic opera by Gilbert and Sullivan, followed by The Sorcerer (1877) and HMS Pinafore (1878). This activity went so well that D'Oyly Carte became the responsible manager of the venture, with Gilbert and Sullivan as partners and following The Pirates of Penzance (1880) and Patience (1881) the three were earning a fortune, with Richard having agencies in several theatres. In 1879 Richard went to USA and soon he had five touring companies performing the Gilbert and Sullivan operas there. He invested a proportion of his wealth in the erection of a large new theatre off The Strand in London in 1889 which he named The Savoy after former ownership of the land by Count Peter of Savoy. This was the first public building in the world to be lit by electricity and immediately adjacent he built the Savoy hotel. With 200 rooms and, unusually, bathrooms too, it became the top place to dine or stay in London, especially for wealthy Americans. During 1900 Richard's health failed. The death of Sullivan (Nov. 1900) proved a great blow and Richard died in April 1901.

Richard D'Oyly Carte married twice. By his first wife, who died aged 32 he had two sons, Lucas, who became a barrister but died of tuberculosis in 1907, and Rupert who went on to be chairman of the Savoy Hotel Ltd. His second wife, Helen Lenoir, was earlier his secretary and took an active part in organising his work. Rupert married and had a daughter, Bridget, in 1908. Rupert died in 1948 leaving Bridget in charge of both the D'Oyly Carte Opera company and the hotel business. She was a very successful manager but, being a heavy smoker, Bridget died of lung cancer in 1985, aged 77. In her will she left a fortune of £5.5 million but with no children of her own or surviving siblings, she was the end of her family line.

February meeting. A week earlier than usual, 30 members and visitors attended a talk by David Duker from St Neots entitled "One of Our Own", telling the story of Battle of Britain fighter pilot, Victor Ekins, MBE, DFC. When David was a child, his grandad told him stories of his wartime experience, especially in North Africa. In due course, with his interest focused on the Battle of Britain pilots, David spent 10 years meeting and interviewing many of the fighter pilots who took part when they were typically about 20 years old. A chance discovery of an online document mentioned Victor Ekins, also from St Neots. David eventually found the Ekins family and met Victor's son Tony who took him to an untidy garage with a trunk full of Battle of Britain papers and photos and the diary which Victor had completed daily for 5 years during the war. Victor had seen an advert to join the RAF Volunteer reserve and on 28 June 1940 he qualified as a fighter pilot. The Battle of Britain started on 10 July 1940 and on 1 August Victor was sent to 111 Squadron at Croydon flying hurricanes to defend London. With only a few hours of flying experience initially, he was scrambled 25 times during the first 10 days of August. At that time Germany aimed to obliterate the RAF fighter force. The diary gave details of numerous aerial battles above airfields with as many as six sorties to fight off the Luftwaffe on some days. At the beginning of August 111 Squadron had 20 pilots and spare planes but by 4 September only 8 pilots and 8 planes remained. With such severe losses the squadron was sent to Scotland to be rested by joining a training group. On 7 September, having failed to defeat the RAF fighters, Germany changed tactics to blitz bombing of London. Victor wanted to get back to defend London and after only 12 days away he joined 501 Squadron at Henley. On 27 September he was scrambled to the south coast where he was attacked by 3 Messerschmitt 109s and, with a bullet right through his body near his right shoulder, he managed to get out of the burning hurricane at 19,000 feet. By good luck he landed in a Canadian field hospital site where he was immediately treated then taken to hospital. Within 10 days he was back flying fighters again. On 31 October the Battle of Britain ended. In 1943 Victor was promoted to Squadron Leader to command 19 Squadron where he

stayed until war ended. Then he joined his father's business of Auctioneers and Estate Agents in St Neots until he died in 1993.

After almost 4 years researching Victor's story, David produced a book entitled "One Of Our Own". He also started a company called the Tally-Ho Project which goes into primary and junior schools to share with young people the values of duty, unity, courage, resilience and positive action that helped a generation rise to the extraordinary challenges of war.

Over Gardening Club

Meetings in Over Community Centre at 7.30pm on the 3rd Wednesday of the month with a guest speaker, raffle and refreshments.

Membership £15 per year entitles you to 10% discount at Oakington Garden Centre.

Visitors welcome £3. email: gardeningclubover@gmail.com

Wed 19th March - Angela Potter "Gardens I Have Visited"

Wed 16th April - The William Morris Garden

GONE BY SO FAST

One never gets used to how time flies, once again we are nearing the end of another year of photographic excellence, proud to say that in addition to our enjoyable social activities and lectures we were very successful in our entries to local competitions.

This last few weeks has three internal Competitions, the most prestigious is the Bamber Trophy, on 24th April, judged by Ian Ryall. This is a special event for our Club, in memory of our local vicar, Dr Bamber. For those not already in the know, this is not the usual type of panel all meant to fit together illustrating a single topic. This set must show everyone your widest range of skills and interests, no good looking through your portfolio for your best images if they are of similar subjects. This is always a test for even the most experienced amongst us, we all seem to specialise in certain areas, such as Wildlife or Landscape. There will be an Advisory Evening to help those still not sure how to comply with these unusual rules, on Zoom at 7:30pm, on 8th April.

The next is another typical Swavesey event. Earlier in the year, in order to improve our skills, members pair off and then meet up to share their own special knowledge. The results of this collaboration are shown and judged together and the winners this year will be chosen by Ben Pike. (8th of May).

The last competition is judged by us. All the winners of this year's competitions are given a second viewing, and we choose our absolute favourite. This is named 'Image of the Year', a great honour as it is used on all our sites, and appears on our membership cards. (15th May).

The other dates to remember are our Members Night, very soon on 3rd April, who knows what treat someone has planned for us, and then what promises to be a most helpful talk on Infrared Processing by Jonathan Vaines, (1st May).

All we have left after this is the AGM on 22nd, and the Annual Dinner on 29th, and for these and Annual Barbecue please keep your eye on our website.

Mo Hadfield.

Swavesey Camera Club

www.swaveseycameraclub.co.uk



"Some changes to report at the club since the last update. Club Chairperson Lewis Walsh has moved on to be replaced by Paul Clarke. Paul has been involved with the club for several years, starting as a parent of an U6 player, parent helper, then took the plunge to volunteer as a coach. Paul is currently the assistant manager of the U16 whites boys team. Paul joins the executive committee of Club Secretary Paula Land, Club Treasurer Amanda Foreman (who has agreed to continue in the role – Yeah!) and club Safeguarding Officer Carolyn Merrick. The coaches and committee thank Lewis for his support and wish him well for the future and also wish Paul success in the role.

As we're speaking about roles, the club would greatly benefit from a fixtures secretary. If you have great organisational skills, some free time and a desire to support your local club, please contact Paula – swavesey.secretary@gmail.com

As mentioned in the last edition, we're very keen to ensure we see an under 6 team form over the summer. To do this we need you! (but we'll help!)

Each year we look forward to celebrating all of the amazing people who run or play for our various teams via our "Spartans Day". Each year it falls on Father's Day, so this year it's Sunday June 15th on the village green.

This year we will be holding taster sessions during the morning for any Under 6s who may wish to sign up. The sessions will be free and run by qualified coaches. Please just come along with some trainers and have some fun. This is where we need you! We are always looking for new coaches to come on board and join the amazing coaching team. Again, come along and chat to us. Further details of the taster sessions will be circulated via the primary school newsletter.

Whilst we have a good number of boys and mixed teams, we're very keen to develop more girls teams across all our age groups. The national rise in the popularity of the women's game isn't as reflected at our club as we'd like it be and we remain dedicated to offering girls the opportunity to play the beautiful game.

In another positive and inclusive development, the committee are very keen to provide a gateway to football for disabled players of all ages. We understand this will be a challenge but one we're committed to rising to. We may not have the infrastructure in place for the 25/26 season, but if anyone feels able to support us with this goal or wants to discuss further, please contact Paula.

We look forward to seeing you drop by on Father's day!"

Hale Road Allotments

Would you like to grow your own fruit and vegetables?

Swavesey are very lucky to have approximately 60 allotment plots on Hale Road, just before the windmill. We are run by a plot holder management committee and have great facilities that are the envy of many other sites. With all these facilities you might think we have a huge waiting list? We do have one, but it's very short at the moment. Have you ever thought about the joy of harvesting your own produce, if so now would be a good time to act!

If you would like to be added to the list, or would like further information, then please get in touch. My contact details are in the club section of the magazine.

Val (Chair Hale Road Allotment and Gardening Association)



U3a OPEN DAY - Tuesday 29th April 2-4pm - St Ives Corn Exchange

The u3a Open Day is the perfect opportunity for adults coming up to their retirement years to explore a diverse range of creative, educational or social interest opportunities. They will see how they can develop their interests, make new friends and have fun.

Visitors will have the chance to meet existing members and explore the variety of groups on offer including arts, sciences, humanities and sport. From painting to philosophy, languages to digital skills, the u3a offers something for everyone, no matter their backgrounds. Highlights on the day will include opportunities to discuss retirement, demonstrations and entertainment from the singing and music groups.

Free refreshments also available. Website:- <https://u3aivo.uk/open-day-2025/>

HIDDEN BEAUTY

BY REBECCA



NAILS | LASHES | WAXING | MASSAGE

Home based salon offering a range of professional beauty treatments. Whether it's a relaxing, stress relieving massage A facial using vegan & cruelty-free Husk & seed products fabulous eye lash extensions or a pampering manicure or pedicure

Hidden Beauty is here for you.

Gift vouchers available

07815 443009
BECCASTART@HOTMAIL.COM
f HIDDENBEAUTYBYREBECCA



In aid of
**Blood
cancer
UK**

**The Over Players are pleased to announce that our Spring Show is
CALENDAR GIRLS THE MUSICAL!**

Show Dates:

Wednesday 28th May - Saturday 31st May 2025 at Over Community Centre

Tickets will be on sale from 9am on Monday 10th March 2025 and are £12.

Please note that due to the content of the show, it may be unsuitable for children under 14 years of age.

The Over Players will also be raising money for Blood Cancer UK at each performance.

For more information and to book your tickets, please visit our website:

<https://overplayers.uk/>

About the show:

Following the death of a much-loved husband, a group of ordinary women in a small Yorkshire Women's Institute are prompted to do an extraordinary thing and set about creating a nude calendar to raise money for charity. The story of the Calendar Girls launched a global phenomenon: a million copycat calendars, a record-breaking movie, stage play and now a musical written by Gary Barlow and Tim Firth.

Calendar Girls The Musical

A Musical by Gary Barlow and Tim Firth

Originally Produced by David Pugh & Dafydd Rogers and The Shubert Organisation.

Based on the play CALENDAR GIRLS written by Tim Firth and on the motion picture CALENDAR GIRLS written by Tim Firth and Juliette Towhidi.

This amateur production of CALENDAR GIRLS THE MUSICAL is presented by arrangement with Concord Theatricals Ltd. www.concordtheatricals.co.uk

MISCELLANY

Will Wright Memories

Towards the end of the '60s decade there were a number of free festivals popping up around the country during the summer months, many of which were being organised & arranged by an organisation by the name of "The Arts Lab", who were using their connections with local promoters and music agencies to create these outdoor concerts/festivals. In the summer of '68 we were offered a slot on what was known as Pilton Down festival, which within 2 years had become the Glastonbury festival nearby, which is still going to this day - not free entry though! I can remember the Edgar Broughton band being on the bill along with a few other acts which performed regularly in Devon & Cornwall. Our local classic festival was a 4 day event located on Jesus Green, which took place in June 1969, with bands performing on all 4 days from 2 o'clock until dusk. Acts performing included Blossom Toes, Terry Reid with his band Fantasia, King Crimson, Brian Auger & The Trinity, Family, Roy Harper and top DJ John Peel kept things going for 3 of the 4 days. We were given a slot on the opening day performing prior to the Edgar Broughton Band. On the last afternoon, Wednesday, a young lad called Dave turned up back stage with a 6 string guitar on his back and when he started playing on stage it was the first time myself, and probably most of the other attendees heard the words "Ground control to Major Tom" and yes it was a young Dave Bowie who later became called "David Bowie", who had turned up to perform as he was a member of the Beckenham Arts Lab! Crazy Days. The only outdoor festival of any kind I can remember prior to the 70's was the Windsor Jazz festival, which then became the Reading festival as we know it today...

As we entered the 70s we were still based in Cornwall and had discovered what a beautiful county it was. On days off we would explore tourist venues such as Sennon Cove, The Lizard, Perranporth, Porthcerno, St. Agnes and I could go on & on..... We were gigging constantly in the West Country with periodic journeys back to the eastern counties & we were getting many bookings on the college & university circuit all around the country and were logging up thousands of miles but we weren't getting involved with any recording companies. Then in the summer of 1970, Mick our guitarist made his decision to settle down & get married to a local Cornish girl which made things a bit difficult for me & Paddy, the bass player, as that would leave us as a duo. Mick gave us a couple of months notice which took us towards the end of the summer season. Paddy & I decided we would carry on in the business & started checking vacancy notices in the musical press - no internet in those days!.. We found an ad in the New Musical Express for a drummer & bass player wanted for a band in the Guildford region with the great comment "bread heads need not apply". We contacted them & arranged a meeting in a club in Guildford, needless to say we took our equipment but the keyboard player did not set his Hammond organ up & when questioned his reply was that he wanted to make sure we could play! Never the less we started a couple of blues numbers and he had come on board, we had decided to become members of Duffy and they agreed we would be able to complete our contractual obligations in Cornwall before we came back in a couple of weeks and they were making arrangements for our temporary residential needs.

PEST PROBLEM? Family firm since 1974

LOCAL QUALITY SERVICE

pest control/prevention/emergencies/contracts/quotations/birds/rodents/insects/more...

t: 01954 230708
m: 07789 502556
w: www.drepestcontrol.co.uk
e: info@drepestcontrol.co.uk

DRE Pest Control Limited

19, WALLMANS LANE
CAMBRIDGE
CB24 4QY

BPCA

R. A. Miller
Plumbing and Domestic Heating
Fenside, 71 Willingham Road, Over
Cambridge CB24 5PE
Tel: 01954 203277 Mob: 07831 853885
Email: robert.miller@ntlworld.com

All plumbing work undertaken

- » New boiler replacement and installation with free quotation.
- » GAS boiler and GAS fire servicing
Landlord Certificates.
- » Heating problems - Diagnosis and rectification.
- » General plumbing - taps, washers, pipework, showers, etc.
- » Full and partial Bathroom installation work.

For a reliable and professional service

Robert Miller MCIPHE RP

Office 01954 203 277
Mobile 07831 853 885

safe REGISTERED 234391

iphe

REED **REED KITCHENS & BATHROOMS**
DESIGN TO INSTALLATION
THE COMPLETE SERVICE

We are a local established company since 1994 that manufactures a range of top quality kitchens and offers them direct to you, at an upfront price that includes everything from design to full installation. It also includes your choice of top range appliances from the likes of NEFF and Bosch.

Makeover your kitchen using our door and worktop replacement service.

Call for a free Brochure

ArtiCAD COMPUTER AIDED DESIGN SERVICE

NIFF DOMESTIC INSTALLER

KBBI Institute of Kitchens, Bathrooms & Bedrooms Installers

KITCHENS

BATHROOMS

BEDROOMS

Tel: 01954 232899 Mobile: 07711 696015

For more details visit: www.kitchenscambridge.com
email: glenn@kitchenscambridge.com

An update from Fen Drayton Lakes



A sign of Spring, Cuckoos usually return around late April, and their distinctive call can be heard all around the site. Photo by Edwin Parish

With winter coming to an end and spring just around the corner, we can look back at a very wet few months here at Fen Drayton Lakes.

September through to the end of February is when we become busy with our habitat management tasks, going around the reserve carrying out work to maintain or enhance areas for our key breeding species. Most of this work is guided by the reserve species targets in our management plan. These targets detail the species, avian or otherwise, that we want to attract to the reserve to breed or overwinter. During this time the small islands on the lakes are cleared of vegetation, willow trees are removed from reedbeds and other wet areas, patches of scrub are coppiced, and many other tasks are carried out to provide the ideal habitats for our target species across the reserve.

The coming months are undoubtedly one of the best times to visit the reserve with April, May and June among the very best. To plan your visit, go to: rspb.org.uk/days-out/reserves/fen-drayton-lakes where you'll find everything you need to know.

This past autumn/winter period has not quite gone to plan with serious and prolonged periods of flooding starting in late September. Despite all the low-lying wetland areas of the reserve being inaccessible, we have still been able to get out with our dedicated volunteer group to carry out various habitat jobs around the reserve, as well as doing infrastructure repair work on livestock fencing and trails.

Upcoming events at Fen Drayton Lakes

Wednesday Wander Guided Walk - Ever thought you'd like to know more about the reserve and its wildlife? Volunteer-led guided walks take place once a month, usually on the second Wednesday.

To see further details and book, please visit:-

events.rspb.org.uk/fendraytonlakes
Email: fendraytonlakes@rspb.org.uk

Visit:-
rspb.org.uk/days-out/reserves/fen-drayton-lakes
The Royal Society for the Protection of Birds (RSPB) is a registered charity: England and Wales no. 207076, Scotland no. SC037654

We now look forward to the breeding season throughout the spring and the arrival of many migrant species returning to nest. Many of these will have been in sub-Saharan Africa or Southern Europe during the winter months, coming back to the same patch of reed or hawthorn as they did last year to set up territory and nest.

Come and join 'Sheddit!' Swavesey's Community Shed

Our local community shed is busy working on projects and we're always looking for people to come along and join in the fun of making things. We're working closely with the village climate change working group and all of our activities contribute to local biodiversity and improve sustainability.

Recently we made a large bug hotel that will reside in Constable's Rood with new signposting that explains the important role of bugs. By the time you read this it may even be in place. We are also making bird boxes for various places around the village as part of the village 'Fund for Nature' project. We make lots of other things too, often using our fabulous 3D printer and laser cutter. Everyone is welcome to bring their own things and ideas to work on.

If you like making things and spending time with pleasant company, please do get in touch with Phil on drphilcoffee@gmail.com, [who can tell you more](#). It's all free - all we ask for is a little enthusiasm and maybe even some [ideas!](#)

Sean Papworth - Swavesey to the Tottenham Hotspur Stadium

Before my 50th birthday last year I wanted to test myself again to see if I had the legs to run another marathon. This was part 1 of my challenge !

This brings me onto Part 2 of my challenge! Part 2 of this challenge is to run from my home village of Swavesey in Cambridgeshire to the Tottenham Hotspur Stadium. This has been an idea now for 5 years and I was waiting for Spurs to win something before I attempted it but soon realised that might be further away than I hoped, so I'm doing it now whilst they are in top form ! Stop laughing!

If one idiot running wasn't bad enough I will be joined by my godson and very smug Liverpool fan Max Rose to share the pain!

Hopefully along the way we will be joined by more people to support us and push us along.

Approximately 60 miles, this ultra distance is uncharted territory in running for me and I will be pushed to my limit with it and I will need to dig deep to achieve this. I will be raising money for ACT Addenbrookes Charitable Trust and for Mind. This will be in aid and memory of all those who have lived with cancer, know someone close to them with cancer and or who have lost someone close to them with cancer. I myself am indebted to the treatment I received from Addenbrookes 20 years ago so this is a charity very close to my heart.

Along side this I will also be raising money for Mind as more and more people need the support for mental health, especially us men who find it hard to open up to someone, friends and family. It is so important to get help if you need help, if you're not in a good place or if you can help someone if you know they are struggling.

I would be so grateful to any donations and support for this challenge so from the bottom of my heart thank you.

<https://www.givewheel.com/fundraising/5937/sean/>



SWAVESEY COMMUNITY PAVILION

Following the success of the 'Beer and Bubbles' Festival last summer, which was well supported by the local community, we have been able to invest the money raised back into the facility.

With the funds raised from the festival and a grant from the Parish Council we have been able to install a new Defibrillator Cabinet on the outside of the Pavilion which acts as a vital asset for the Community.



The Thalia WB Community Fund is part of the Landfill Communities Fund (LCF)

Following a successful grant application, we have also recently had a PV system installed.

The primary objective of the solar panel project was to mitigate escalating energy costs that have more than doubled recently. By generating renewable energy on-site, the Pavilion expects to save approximately £1,000 in the first year alone. Over the 25-year projected lifespan of the system, total savings from reduced electricity bills and export payments are estimated at significant savings. This financial relief will enable the Pavilion to remain open for community use, supporting a diverse range of activities without the burden of high energy expenses.

Installing a 14.19kW solar photovoltaic (PV) system with 33 solar panels will generate an estimated 12,870kWh of clean electricity annually, reducing carbon dioxide emissions by approximately 2,733kg per year. This reduction is equivalent to taking a car off the road for 9,760 miles or planting 125 trees annually. The project aligns with broader environmental goals by decreasing reliance on non-renewable energy sources and contributing positively to the local community's sustainability efforts.

National Lottery Grant

Following another successful grant application, we have been awarded funds to help renovate other elements of the building. These include; a new kitchen, installation of LED lighting, new signage, general repairs and new windows and doors. These works will happen across 2025.

The Pavilion is available to hire for a host of various activities, including local football matches, children's parties, fitness classes, and community events such as the Christmas Wreath making workshop, which took place in December. Please email scp.bookings@gmail.com if you are interested in hiring the facility.

We look forward to seeing you all at the 2025 'Beer and Bubbles' festival which will take place on 18th and 19th July!

Selwyn's Alphanumeric Quiz. Part 6

Solve the mainly cryptic clues below, e.g., Liverpoolian insects 3, 7 The Beatles - we said it was easy! Note, where a group is called "The Something", sometimes "The" is dropped.

Juveniles from Tennessee capital	3,9,5
39 of these from Buchan's novel	5
Sounds like these peers are also sirs	3,6,7
Noise associated with storms and The Hustler	11,6
May be shed if afraid	5,3,5
Goat, Hoffman film role, planes used in WWII	5,1,6,3,3,7
Adoring measurement helps medicine go down	3,5,8
Group of Knight's Counsel & Florida's nickname	2,3,3,8,4
Swimming reptiles akin to tortoises	3,7
Mode of transport for early US president	9,8

You will find the answers to this puzzle on page 25

Quality Bespoke Secure Storage

Space for all your storage needs

Easy to open & fast to access. High security with PIN codes, HD CCTV cameras & individual room alarms. Choose as little or as much space as you really need, for any length of stay, with no long term commitment. Clean, dry, ventilated & condensation free. Friendly & helpful service with packaging available. Open to customers everyday from 7am to 9pm. Viewings arranged by appointment.

MoreSpace
 • Home • Document • Commercial

Located at Manor Farm, Graveley, PE19 6PH. Mention SMM22 to receive £5 discount on your first month of storage room rental.



www.morespacestorage.co.uk

Call 01480 830130

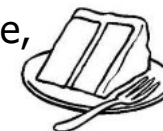
Compass Café

"Encompasses the community"

All are welcome on Thursdays
 10:30am until 12 noon
 At Bethel Baptist Church



Our cakes are homemade,
 our coffee and sugar are Fairtrade,
 our tea bags are plastic-free.



Priced to be affordable:

Tea/coffee/hot chocolate £1 per mug
 and Cakes £1.50 per large slice

Squash is free

Please use the side door to enter, the far side door has a ramp for wheelchair users and pushchairs, and there is a carpet and toys for pre-school age customers.

Compass Café is run as a community event, a place to meet and chat. Your hosts are a group from one of: Bethel Baptist Church, Girlguiding Units in Swavesey, Swavesey Primary School PTA, St Andrew's Church and Swavesey Women's Institute.

When there is a 5th Thursday in the month other groups are invited to run the café to fundraise. Please get in touch with Sue Ellington if you would like to know more.
sue.ellington@virgin.net or phone 01954 202923

Future 5th Thursday dates:

All the 5th Thursdays in 2025 are now booked.

The Old Granary - Westwick (near Oakington)

The property comprises a ground floor open plan office suite within an attractive converted granary. The office benefits from gas fired central heating, ample car parking, bicycle parking, kitchen, WC and showering facilities.



The village of Westwick (near Oakington) is situated approximately 3 miles to the northwest of Cambridge and only 2 miles from the A14 and M11. The Guided Busway, connecting Huntingdon, St Ives and Cambridge, is approximately 150 metres away.

Mains electricity, gas and water are available to the premises.



For more information please contact us:
 01223 644210
Rebecca.Haylett@OpenArch.co.uk
www.openarch.co.uk



Vets for Pets Bar Hill

Room for plenty more paws!

Your locally owned vets on Viking Way, Bar Hill

Cats

Find out more about us

Celebrating almost one year on the block!

Phone: 01223 243535
 whatsapp: 07360 493 944
 Email: barhill@vetsforpets.com

Shh...If you quote "Swavesey meridian" you could get £30 off our Complete Care plans

SWAVESEY LIBRARY

is your local voluntary run community library.

Now at a new location within Swavesey Village College.

We can provide you with the majority of the services you may find in the larger town libraries right on your doorstep, such as - a large range of adult fiction, autobiographies and large print books, Children's – early readers to young adult books; plus internet access and local information.

In addition, with our links to the Cambridgeshire County Council Library Service you can order books from most Cambridgeshire libraries for collection at Swavesey.

All you need to be is a member of the Cambridgeshire Library service to borrow our books (and those from other Cambridgeshire Libraries), and if you're not, then we can soon enrol you and your family.

We also stock numerous second-hand books for sale – only 50p each and hold regular children's activity events.

So why not pop along today.

We are open: -

Tuesday afternoons 3.30pm -5.30pm,

Wednesday evenings 5pm – 7pm and

Saturday mornings 10 – 12 noon.

There's no change to our entrance, it's still on the righthand side of the Gibraltar Lane car park. Just follow the library signs into the college and along the corridor past the new college kitchen to our new location.

The old Stage area within the old hall

For further information see our web site; -

<http://www.swavesey.org.uk/community/swavesey-your-library/>

Facebook at Swavesey Village Life or contact

Richard at Richard94hart@gmail.com / 01954 202707 or

Doug at Doughuntuk@yahoo.co.uk / 01954 232478.

Swavesey 100 years ago (April & May 1925) From the Cambridge Chronicle

PROPOSED WEIGH BRIDGE. 10th April 1925

A meeting of representatives of the Fen Drayton, Over and Swavesey Parish Councils was held at the Memorial Hall on the 2nd inst., to consider whether a joint representation from the three Councils should be made to the L.N.E.R. Co. as to the provision of a weigh bridge at Swavesey Station.

FOR ADDENBROOKE'S. 24th April 1925

The annual collection of eggs for the use of patients in Addenbrooke's Hospital, which has taken place during the past week, resulted in 1,360 being sent to the Secretary-Superintendent. The collectors, Misses M. Coulson, S. Daintree, N. Mustill, V. Parish, L. Thurlow, and J. Willson, are to be congratulated on having obtained about 200 more eggs than last year.

HOCKEY CLUB. 1st May 1925

During the past season the Swavesey District Hockey team played 22 games, winning 10 and losing 12, an improvement on the previous season. The club hope to do still better next winter.

COW RAIDS CYCLE SHOP. 1st May 1925

A cow on Monday wandered into the yard adjoining Mr. Dick Wilderspin's cycle warehouse in High-street, and finding nothing to interest him there, entered the workshop, proceeding thence through a doorway into the front shop, in which there were a number of new cycles, motor and ordinary, children's tricycles, etc; in fact the floor was so covered with various things that only a narrow passage was left. As no one was in the shop there was every possibility that the animal would do considerable damage. But the raider had been "spotted" by Vic Wilderspin, Mr. Wilderspin's seven-year-old son, a fearless and resourceful youngster. Seeing that there was no room for the cow to turn without trampling on cycles, etc., and that if he attacked from the rear the animal might make a dash through the large plate-glass window, he went round to the front of the shop, and entering the door, clambered over packing cases until he faced the intruder. With a small stick he tapped its head, and by persistent tapping induced it to back slowly along the narrow passage into the workshop, dragging with it, entangled in its feet, three small tricycles. In the workshop there was room for the intruder to turn, and it at once walked out into the yard, leaving the tricycles behind. Strange to say, no damage was done, the tricycles even escaping without a scratch.

DR. ELLIS ATTACKED BY DOG. 15th May 1925

Alderman J. W. Ellis, when walking in Market Street early in the evening on Thursday week was severely bitten in the leg by a dog, which attacked him from behind, and getting a firm grip of his calf inflicted a nasty wound, besides tearing his trousers and underclothing. After receiving first-aid, Dr. Ellis was conveyed home in his motor car, and later Dr. R. Ellis, of Cottenham, who was sent for, attended to the wound, the insertion of several stitches being necessary. Dr. Ellis is progressing satisfactorily. The dog is dead, having been promptly shot by the direction of its owner.

ANOTHER TIE. 22nd May 1925

The cricket match in the Lord Lieutenant's Cup Competition between teams representing the Swavesey District and the Comberton branches of the British Legion, which was played on Swavesey Recreation Ground on Wednesday evening, ended in a tie, each side scoring 89 runs. Play did not start until 6.15 p.m., and long before the close of the game at about 9.30 p.m., while the homesters were fighting hard for runs, the light failed. There was much excitement towards the finish. This was the second match played on the Recreation Ground within the past few days to end in a tie.

PROPERTY SALE. 29th May 1925

By direction of Mrs. Prime, widow of Mr. Ebenezer Prime, who is leaving the district, Messrs. Dille, Theakston and Read offered for sale at the White Horse Inn, Swavesey, on Wednesday evening, the freehold estate known as Wright's Farm, with brick and tiled residence, outbuildings, gardens, and 38a. 6r. 31p. accommodation pastureland; also, a freehold detached cottage with garden. Wright's Farm was purchased by Mr. F. Stanton, of Lolworth Grange, for £1,500, but the cottage was withdrawn at £110.

Chris Richardson

Doctors Surgeries

Bar Hill Surgery

(01954) 780442

Out of hours (01954) 780442 -
call will automatically be diverted
Website:- www.maplebarhill.co.uk

Fenstanton

7E High Street, Fenstanton
01480 461873

Out of hours 111

Website:- www.riverportmedicalpractice.nhs.uk/location/fenstanton/

Swavesey Surgery

(01954) 230202

Out of hours 111

Website:- www.swavesey surgery.nhs.uk
Information & updates on facebook page

Over Surgery

(01954) 231550

Out of hours 111

Website:- www.oversurgery.nhs.uk
Information & updates on facebook page

Longstanton

(01954) 207600

Out of hours 111

Website:- www.willinghammedicalpractice.nhs.uk

See our website at www.swaveseymeridian.org.uk
for the full and latest surgery newsletters. Ed

SATURDAY LUNCH CLUB

OVER DAY CENTRE

Welcoming all residents of Over and surrounding villages to join us for lunch at the Day Centre, lunch service starting at 12:30 following the Memory Café.

£10.00 per person, main course & dessert, includes teas & coffee

All food is freshly prepared and we're happy to cater for any dietary requirements or allergies

Our menu for lunch is available one month before, either on our website or at the Memory Café.

To book your place or for more information visit our website:

www.overdaycentre.co.uk/whats-on/saturday-lunch-club/

Both events are at The Over Day Centre, 1 Drings Close, Over CB24 5N wheelchair accessible, free parking available.

Answers to Selwyn's "Pop Groups Over the Decades" on page 19

Juveniles from Tennessee capital	3,9,5	The Nashville Teens
39 of these from Buchan's novel	5	Steps
Sounds like these peers are also sirs	3,6,7	The Barron Knights
Noise associated with storms and The Hustler	11,6	Thunderclap Newman
May be shed if afraid	5,3,5	Tears for Fears
Goat, Hoffman film role, planes used in WWII	5,1,6,3,3,7	Billy J Kramer and the Dakotas
Adoring measurement helps medicine go down	3,5,8	The Lovin Spoonful
Group of Knight's Counsel & Florida's nickname	2,3,3,8,4	KC and the Sunshine Band
Swimming reptiles akin to tortoises	3,7	The Turtles
Mode of transport for early US president ^{t***}	9,8	Jefferson Airplane



HEMINGFORD
ARB

PROFESSIONAL TREE SURGEON

- ⌘ Felling/sectional felling
- ⌘ Crown reduction/thinning
- ⌘ Pollarding
- ⌘ Shaping
- ⌘ Hedge trimming
- ⌘ Stump grinding
- ⌘ Firewood for sale
- ⌘ Free quotation

All aspects of garden and tree work covered.
NPTC Qualified. Fully insured.

Tel: 01480 463674
Mob: 07876 521605
Email: hemingfordarb2016@gmail.com

HEMINGFORD
ARB

City & Guilds
NPTC
Qualified



INDUSTRY LEADING CAR DETAILING

MOBILE SERVICES BASED IN CAMBRIDGESHIRE

Experience a professional service from a highly trained team of car enthusiasts. We are the industry leading choice for detailing services in the Cambridgeshire area.



Our Services

- ✓ Maintenance Details
- ✓ Luxury Details
- ✓ Exterior & Interior Protection
- ✓ Ceramic Coating
- ✓ Swirl and Scratch Removal
- ✓ Staged Polishing
- ✓ Gloss Restoration
- ✓ New Car Protection

Contact us today

07307 367570



detailedauto.co.uk
info@detailedauto.co.uk

SCHOOLS INFORMATION



Rainbows, Brownies, Guides and Rangers.

GIRLGUIDING ANGLIA'S PYJAMA PARTY:

21,000 MEMBERS CELEBRATING WORLD THINKING DAY!

This World Thinking Day Swavesey Rainbows, Guides and Rangers all took part in Girlguiding Anglia's Pyjama Party! On 22nd February 2025, girls from across the region came together for a night of fun, friendship, and inspiration—celebrating the power of guiding in a way that's truly special.

Swavesey Rainbows were joined by their friends from 4th Ely Rainbows for a 'nearly a sleepover' in the Memorial Hall, whilst Swavesey Guides and Rangers enjoyed a sleepover in Bethel.

Packs were ordered in advance with a traditional story, recipe, song, game, craft and activity suggested for 7 different countries, along with a 'goody bag for girls and leaders.

The Rainbows had a passport and travelled by magic carpet or by teleporting to all the countries hearing a story, eating food, making crafts or playing games. They settled down in their sleeping bags to watch the Little Mermaid before going home ready for bed bar brushing teeth.

The Guides and Rangers used the items from the goody bags for some of their crafts, marbling the toothbrush handle and designing a picture to iron on to their teddy t-shirts, they also created a sunset and season tree images, made Brigiderios, Fimo Dala Horses, and decorated cupcakes with a Pjs and slippers theme.

At both events meatballs were served for tea and apples for pudding, and both groups had a campfire singsong around the indoor campfire. At 4pm we joined others from around Anglia Region via Zoom to renew our Girlguiding promises and everyone got a badge to mark the event, all in all a very memorable day.

Come and join the fun, we are looking for adult helpers, please sign up here:

www.girlguiding.org.uk/get-involved/become-a-volunteer/register-your-interest/

Please sign your daughters up early for Rainbows here: www.girlguiding.org.uk/joinus

Don't wait until she is 5 and her friends have started! We are full

FDS

(CAMBRIDGE) LTD

01353 779754

fdssales@outlook.com

www.fdscambridgeltd.co.uk



GRAB/TIPPER HIRE



AGGREGATE SUPPLIES



PLANT HIRE

PRIVATE AND TRADE WELCOME

SOILS – SANDS – GRAVELS – SLEEPERS

HARDCORE – DIGGERS – DUMPERS

WOODCHIP – LOGS

CALL US ON 01353 779754 or 07921 777550



FDS Cambridge LTD



fds_grabhire

BALLET CLASSES
Ballet classes at Over Primary School
Thursdays
During term time
Qualified teacher with enhanced DBS,
Chaperone Licence and Prevent.
Established 20+ years
Age 4 to 18
Details:
www.abmschoolofdance.co.uk
LOCAL FRIENDLY FUN.
Also in Histon, Cottenham and Girton.

Paying too much for your glasses?

Save Money - Buy Direct!

Visit our factory shop to see our fabulous range of Discount Prescription Eyewear

- Hundreds of frames to choose from, including designer frames from Ray-Ban, Polo Ralph Lauren, Oakley, PRADA, Ted Baker and Versace
- Specialists in high and complex prescriptions
- Same-day or next-day service available*
- Save up to 75%
- Huge range of designer sunglasses
- Full range of sports eyewear

Official stockists

*subject to prescription and availability



POLO
RALPH LAUREN



PRADA
EYEWEAR

TED BAKER
LONDON

VERSACE

We are open 9am to 5pm Monday to Friday, and 9am to 1pm Saturday



ALL EYES
SPECTACLE MAKERS
SINCE 1987

Call us

01954 231545

Visit our website

www.all-eyes.co.uk

20 Norman Way Industrial Park, Over, Cambridge CB24 5QE

Swavesey Primary School Early Years and Playwork Centre

Wraparound Care and Early Years Provision - Mon to Fri - term-time

Registration Fee £15 per family for using Breakfast and/or After School Club

Breakfast Club 7.30 am - 8.55 am

3+ year olds to Year 6 children: £6 per child per session

After School Club 3.15 pm to 6.00 pm

For Reception to Year 6 children: £12 per child, family rate £11 per child

Early Years 9.00 am to 3.00 pm (full day) or morning (9-12/1) or afternoon (12-3)

For 2½ year olds to 4 year olds

Places for funded children up to 30 hours per week

Charged sessions:-

3+ year olds £15 half-day and £30 full-day.

2 years and 6 months £17 am only

£5 for lunch hour (12-1)

For more information and to register:-

www.swavesey.cambs.sch.uk (Select EY & P)

PARISH & COUNTY NEWS

From Your DC - Sue Ellington

Dear residents of Swavesey

Some of you will have heard that the Government sent a letter in December 2024, asking the County and District Councils to prepare plans to join forces to form Unitary Authorities. Because we have a Mayor, we don't have to do this until next year but we do have to present the plan by the end of March 2025. I am very concerned that the District Authority provides a great deal of local knowledge which could be lost in a Unitary Authority. I am also concerned at the speed this is being implemented. South Cambridgeshire District Council has called an emergency Council meeting on March 19th to obtain the consent of the council for the plan they will submit. At this late stage we still do not have any information regarding which areas will form our Unitary Authority or how it will be implemented. By the time you read this the plans will have been submitted. You will certainly hear more as the year goes by.

The Government's plans to "make Cambridgeshire the new silicon valley" and to make the planning permission process easier are already starting to have an impact. Council has been informed that the district council has lost its Five Year Land Supply, following the national government's changes to the NPPF. (This means there has been a significant increase in the number of homes which must be built per year) As many of you will be aware from the past, this will now make it harder to refuse planning applications outside of the village framework and other inappropriate developments. This means it is important to ensure that when responding to planning applications and commenting, that you look beyond the village framework for reasons for refusal and ensure that you reference what harm would be caused by the proposed development. It is difficult to say how long these conditions will apply but officers say a minimum of 12 months.

The Government's plan for growth in this area will affect Swavesey in many ways. Northstowe, Cambourne, and Bourn Village are all set to increase with the issues of fresh water, sewage going to Uttons Drove sewage works with outflow around the village to Webbs Hole Sluice, and all the other infrastructure including roads, East West rail, Health facilities and Social Care. The new Unitary Authority is going to be very busy.

As always - if I can help phone me on 97774146331 or email cllr.Ellington@scambs.gov.uk

Cllr Sue Ellington - Swavesey, Fen Drayton and Lolworth Ward.

9.30 am – 10.15 am
Music Theory classes for ALL

10.15 am – 11.00 am
Little Rockets for 3-9 yrs
Join the Band & Find your voice!

11:00 am – 12:00 pm
The BIG Rock School for
Drummers, vocalists or guitarists
with some experience or have
been playing for some time aged
10 yrs+

10.15 am – 11:00 am
The BIG Sing!
(aka Choir/Sing up – 7 – 77yrs! ALL AGES)

11am – 12pm
The BIG Orchestra!
An opportunity for children,
parents, adults & community in
an orchestra together.
Everyone welcome... beginners
to experienced players!

Swavesey Music School

admin@swaveseymusic.co.uk
Swavesey Village College CB24 4RS

SWAVESEY PARISH

Parish Council News January/February 2025

New Village Sign

We hope you will all have seen our new Village Sign in Market St. We have received many lovely comments about how good it looks and wish to thank Stuart Faben (Faben Joinery) for his wonderful work in carving and painting the sign. It replicates the original unveiled in 1979. More information in a separate article in this magazine.

County Council Business

The PC continues to discuss highway maintenance with CCC. CCC is providing investment of more than £56m in highways maintenance. This is to tackle the significant backlog of repairs, addressing resident concerns. This includes £14.5m for the day-to-day management of the highway and an additional £20m in planned maintenance including roads, pavements, drainage, bridges, safety barriers, traffic lights, public rights of way and cycleways.

Resurfacing to part of Fen Drayton Rd was completed during February, a much-needed project to repair seriously sinking sections of road. During these works the road planings from the site were taken to the guided busway car park on Over Rd to repair the large potholes and uneven surface.

Work continues along the A1307 between Swavesey and Huntingdon to replace the crash barriers. Lane restrictions and speed limits are still in place during the works.

Traffic Calming projects

- The PC is still awaiting updated plans on the speed reduction projects being discussed with CCC. The PC last met with the project team on 16th January.
- Consultation – as soon as the PC receives updated plans, a public consultation event will be arranged.
- Speed reduction for Station Rd-Over Rd. A Local Highways Improvement funding bid was submitted in January for a scheme for the north end of the village. Bids are being assessed by CCC and will go through feasibility in the next few months, then the funding process in the Autumn.
- Speedwatch – Training for volunteers to help conduct Speedwatch sessions around the village takes place Saturday 5th April. If you would like to help with Speedwatch please contact us: clerk@swavesey-pc.gov.uk. Places need to be booked in advance. The scheme cannot happen without a strong group of volunteers.

District Council

SCDC is consulting with residents on the 4-day week for its employees. The survey is open until 24th March 2025. More details can be found on the SCDC website.

Devolution and local government reorganisation.

The Government has published its white paper on plans to devolve more powers and move away from two tier local government, so replacing district and county councils with one council. As Cambridgeshire already has a Mayoral Authority, Cambs will be

COUNCIL NEWS

in the second tranche of submissions, however SCDC has been invited by government to submit proposals for future reorganisation.

Cambridgeshire County Council elections are due this May and will still be held on 1st May for all CCC ward seats and for the Cambridgeshire and Peterborough Combined Authority Mayor.

Parking

The PC continues to receive complaints re parking on double yellow lines around Market St causing safety issues and blocking residents' access. The Civil Protection Enforcement Wardens continue to visit S Cambs villages and the PC requests visits to Swavesey. Please be considerate of where you park and please do not park on double yellow lines.

Drainage

The PC is still waiting for a response from DEFRA regarding the concerns over the river flooding and lack of maintenance of the two stanchions on the River Gt Ouse. Local MP Ian Sollom, has written to DEFRA regarding this, as have other Parishes and the Huntingdon MP.

Finance

At the January meeting the PC set its budget and Precept for 2025/26. The Precept is the village share of the Council Tax. The Parish Precept will be £103,806, equating to a Band D Council Tax rate for the village of £95.27 per year (or £7.94/mth). This rate remains the same as for the 2024/25 year, ie no increase by the Parish Council to the Parish share of the Council Tax.

Village Maintenance & Projects

Biodiversity/Climate Change. Projects will continue through this year to provide flowers and bulbs in more locations around the village, with new projects being discussed. Please see the information on the Swavesey-pc.gov.uk website for more details.

Bus shelter in Boxworth End, Plans continue to replace the shelter opposite Rose & Crown Rd junction in the next couple of months.

A Christmas Tree for Market St Green. The PC has agreed to provide a real Christmas Tree each year, from this December, for Market St Green to enhance the Christmas lights display in the village.

The Parish Council congratulates the Trustees of the Community Pavilion, on the Recreation Green, for their successful grant application for solar panels on the pavilion roof. This is the second community building now to have had this work completed and will help enormously with the running costs of providing the facilities there.

Further details on everything that is discussed at Parish Council meetings can be found in the Minutes or on the pages of the Council's website at:-

www.swavesey-pc.gov.uk

Swavesey Parish Council		Website: swavesey-pc.gov.uk
Parish Councillors	Telephone (01954)	E-mail address
Doug Hunt (Chairman)	232478	dhunt@swavesey-pc.gov.uk
Sandie Smith (Vice-Chair)	07806 709939	ssmith@swavesey-pc.gov.uk
James Dodson	230560	jdodson@swavesey-pc.gov.uk
Colin Parsons	230861	cparsons@swavesey-pc.gov.uk
Martin Johnston	200605	mjohnston@swavesey-pc.gov.uk
Warren Wright	203172	wwright@swavesey-pc.gov.uk
Jonathan Kerley	231304	jkerley@swavesey-pc.gov.uk
Rachel Vollerthun	07312 102526	rvollerthun@swavesey-pc.gov.uk
Sue Ellington	202923 / 07774 146331	sellington@swavesey-pc.gov.uk
Sue Rogers	0777 224 7673	srogers@swavesey-pc.gov.uk
Mandy Smith	07909 798968	msmith@swavesey-pc.gov.uk
Clerk: Linda Miller	202982 / 07458 302193	clerk@swavesey-pc.gov.uk
District Councillor: Sue Ellington	202923 / 07774 146331	cllr.ellington@scambs.gov.uk
County Councillor: Mandy Smith Papworth & Swavesey Ward	07909 798968	mandy.smith@cambridgeshire.gov.uk
Memorial Hall Administrator: Nicole Mullee	07963 861791	memorialhall@swavesey.org.uk
Swavesey Parish Council meets on the 2nd Thursday of each month for Planning items and on the 4th Monday of each month for Full Council. All meetings are held in the Memorial Hall at 7.30pm. There is always a 10 minute public forum at the start of the meeting.		






300007

The Complete Gas Heating and Plumbing Company

Plumbing • Heating • Gas
Bathrooms • Water Softeners
Property Maintenance

Tel: 01954 204044 • Web: www.entiregroup.co.uk
Email: service@entiregroup.co.uk

Visit our truly stunning display gardens ...



Probably the largest display centre in the UK,
selling directly to trade and the general public

Bannold are one of the UK's largest independent suppliers of natural hard landscaping materials. We stock natural products sourced directly from the UK and around the world enabling Bannold to offer premium products at the most competitive rates to trade and the general public.

- Natural Paving • Setts and Paviours • Stone Walling
- Decorative Gravels • Rockery • Boulders • Waterfeatures
- Topsoils • Soil Improvers • Bark Mulches • Sands
- Hardcores and Cements



Bannold
always more choice

Freephone: 0500 012231
or 01954 231666

Capability Barns
Huntingdon Road
Fen Drayton
Cambridge CB24 4SD

Opening Times:
Mon-Fri 07.30 till 5.00
Saturdays 09.00 till 1.00

www.bannold.co.uk









St Andrew's Church

Services at St Andrew's

Please join us at 11am on any Sunday morning for worship, or at 8pm on the first Thursday of every month, for fifteen minutes of silence and prayer followed by Compline remembering the people of Ukraine and other countries affected by war.



You can find information about all our services and events on Facebook and online at A Church near You:

<https://www.achurchnearyou.com/church/2834/service-and-events/events-all/>



Ministry Team:

Rev'd Jenny Hill (Priest in charge): jenny@5folds.org.uk
Canon Jan Payne (Licensed Lay Minister): jan.payne@northstowe.church
Colin Smith (Benefice Administrator): 01954 203459 admin@5folds.org.uk
Churchwardens Jacqui Fuller: 01954 230774 or Bridget Lofts: 01954 231068

Diddy Disciples Sunday School

This is our new Sunday School for younger children. We sing songs, draw and make things and most of all, learn about Jesus. We meet every Sunday at the back of church. Do join us.



Emmaus House Group



We are a small group of people who meet every other Wednesday morning on Zoom to learn more about God through studying the Bible. We choose our own subjects and ask lots of questions but don't always find the answers! More details from Nicky Carne: nicky_carne@hotmail.com or the churchwardens.

Craft Group

Our group meets every other Wednesday to work together on group activities; you may have seen the decorations on the carpark cross. You can bring your own craft activity to work on or just come to enjoy the company over a hot drink and cake. Details from Jacqui Fuller: jacqui_fuller@hotmail.com



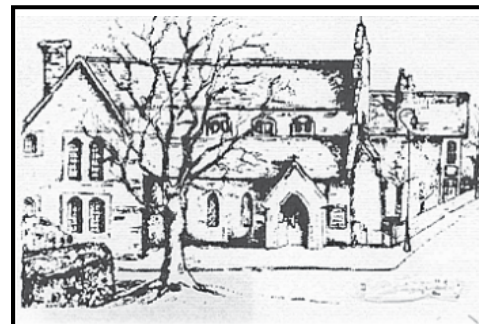
Events at St Andrew's

Thank you to everyone who supported our recent events. We hope that you enjoyed them. We would love to welcome you to the next ones.

Easter Fair: Saturday, April 12th

Plant Sale: Saturday, May 17th

Teddy Bear Zip Wire Challenge: Saturday, July 5th



SACRED HEART OF JESUS
Roman-Catholic Parish
19 Needingworth Road, St Ives, Cambs. PE27 5JT

Parish Priest: Rev ThomasJ Walton

Tel: 01480 462 192
www.sacredheart-stives.org.uk
email: office@sacredheart-stives.org.uk

Mass Times:
Saturday 17.00 (Anticipatory)
Sunday 09.00 and 11.00

FLOOR COVERINGS

Cambridgeshire's largest flooring showroom est. 1996

◆
Luxury Vinyl Tiles (LVT)
Laminate - Hardwood & Natural
Over 3500 Carpet samples
Cushion Vinyl

◆
FREE no obligation quotes.
Fitted by fully employed craftsmen with over
100 years experience.

◆
01223 233233
www.floor-coverings.net

◆
Showroom:
Unit 31-32 Dry Drayton Industries, Scotland Road,
Dry Drayton, Cambridge CB238AT
Open: Mon - Sat 9-5




Scan to see our showroom



HOCKEYS
ESTABLISHED 1885

Thinking of a move? We are happy to offer you a free, no obligation valuation of your property.




Call our Cambridge office for a free valuation
(01223) 356054

Call our Willingham office for a free valuation
(01954) 260940



Club Vintage - Wednesdays 2-4pm

A warm welcome awaits older people and the club is dementia-friendly. There is a small £3 weekly charge. Enjoy a rotating variety of activities such as chair-based exercise, singing, bible-based crafts, quizzes, games and entertainment from others.



Thursdays 10:30am-12:00pm



You will receive a very warm welcome at our community run cafe. Enjoy reasonably priced coffee, tea and homemade cakes.

LITTLE LIGHTS - Fridays 10am-12pm

Baby & toddler group. All are welcome, bumps, babies, toddlers, parents and carers. Drop in at anytime for as long as you need. Only £2 per family, including drinks & snacks for all! We hope you can come along and join us!

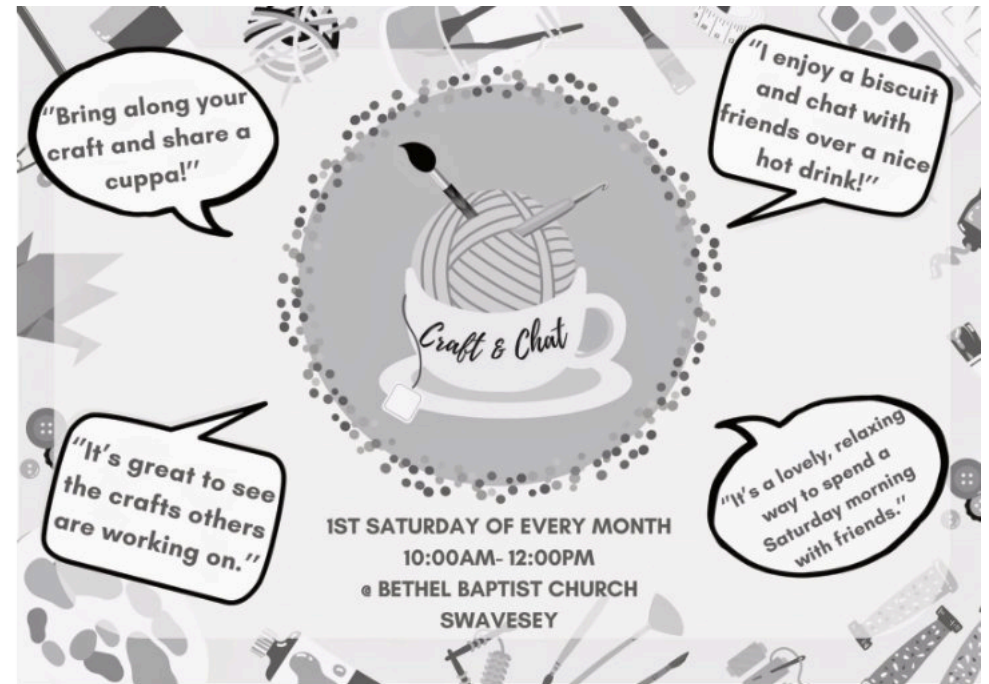


The Hub - Youth Group - Fridays 7-9pm

Open to all year 6 and secondary aged children. Come along and meet up with friends, chat, play games, listen to music and much more! Snack bar also available. £1 entry fee. Parents must complete a permission form.

Sunday Services - Sundays 10:45am

You are warmly invited to join us for our weekly services followed by coffee in our compass room. Our services are open to all and are family friendly with children's Sunday School groups for all ages! Every first Sunday of the month is our alternative all age, café-style service which include refreshments around tables, conversation and maybe even some crafts! We have a special Communion service once a month on the 3rd Sunday. At Bethel we are brought together by our Faith, but what truly makes us family is our passion to serve God and love one another through every season.



Easter Dates 2025



Good Friday Reflections - 6pm, Friday 18th April @ Bethel Baptist Church

Easter Sunrise Service - 6:30am, Sunday 20th April @ the Jetty, Fen Drayton Lakes

All Age Family Service - 10:45am, Sunday 20th April @ Bethel Baptist Church

CONTACT US

Pastor Bob- pastorbob@bethelbaptistchurch.org.uk

Sue Hope (Secretary) - secretary@bethelbaptistchurch.org.uk

Charlotte Holmár (Administrator) - admin@bethelbaptistchurch.org.uk

www.bethelbaptistchurch.org.uk

www.facebook.co.uk/SwaveseyBethel

Community Groups & Charities

Swavesey Sustainability Hub	The Sustainability Hub is a community group that offers space and support for people to realise their ideas for a more sustainable way of life. Contact: rvollerthun@gmail.com Website: www.thesustainabilityhub.biz
Cam Sight	Cam Sight is a local charity which offers support to anyone with a visual impairment, along with their family and carers. We meet on the 4th Wednesday afternoon of each month in Bar Hill. For more information please telephone Joan in Bar Hill on 01954 200622 or Alison at Cam Sight on 01223 420033 or email alison@camsight.org.uk . For more info see:- www.camsight.org.uk
Cambridgeshire Hearing Help	CHH is a charity that helps people with hearing loss. Volunteers service NHS hearing aids and provide batteries and they attend Swavesey quarterly at Thistle Green. Advice on any aspects of hearing loss is available at a hearing help session or by calling the office on 01223 416141, E-mail: enquiries@cambridgeshirehearinghelp.org.uk Website: cambridgeshirehearinghelp.org.uk
Care Network	Care Network supports volunteers, encourages independence and develops good neighbour projects. We provide the Welcome Home from Hospital service across Cambridgeshire. Contact:- Care Network, 5 Broadway House, 149-151 St Neots Rd, Hardwick, Cambridge, CB23 7QJ (tel: 01954 211919). Website: care-network.org.uk/
Compass Cafe	Meets every Thursday morning from 10.30 until 12.00 at Bethel Baptist Church. Contact Sue Ellington on 01954 202923 or sue.ellington@virgin.net
Dog Lovers of Swavesey	Dog Lovers of Swavesey is a friendly group where anyone with a love for dogs is welcome with or without dog. Meetings are on the Recreation Green organised through the Facebook group at https://www.facebook.com/groups/dogloversofswavesey where we also exchange tips, ask for advice or have a laugh. Resources are gathered at https://dogloversofswavesey.co.uk/ . Contact: Matt at matthewyoung1@btinternet.com or Anita at anita.faul@outlook.com " Tel 01954 232791
Swavesey Library	A volunteer run community library based in Swavesey Village College. We are able to providing a full range of library facilities being directly linked to the Cambridgeshire County Council library service. For more info see:- www.swavesey.org.uk/community/swavesey-your-library/
The Friends of the Rosie Hospital	The Friends of the Rosie Hospital are helping to make the Rosie a more comfortable environment for mothers and babies. Contact:- Mrs Mary Sanders (Hon Chair) rosieinstitches@ukonline.co.uk Tel 01223 356615
East Anglia's Children's Hospice (EACH)	Put your free time to good use and volunteer at East Anglia's Children's Hospice (EACH) in Milton. Volunteering at a children's hospice doesn't always mean care work and fundraising as there are also tasks such as admin and maintenance of the grounds. Contact:- Clare Bates on 01223 815134, Email: clare.bates@each.org.uk
OWLS Community Car Scheme	Run by DBS checked volunteers the scheme offers a door-to-door service, for medical or some social journeys, to people who are unable to access other forms of transport. Ring 07505 254363 to book a journey, find out more, or to volunteer as a driver Website: http://www.swavesey.org.uk/village-links/owl-community-care-scheme/

CLUB INFORMATION

Army Cadets UK	Swavesey Detachment, No 2 (Cromwell) Company, Cambridgeshire Army Cadet Force meets each Tuesday evening at the Swavesey Village College from 7 pm. New recruits are welcomed from ages 12 years (year 8) to 18 years. www.armycadets.com/county/cambridgeshire-acf/																		
Swavesey Five-a-Side Football Club	Currently seeking new members for this long-established club. We play each Wednesday evening from 6:30 to 7:30pm in the new sports hall at Swavesey Village College. Enquiries to Stewart Smith (07803 050234).																		
Swavesey Girlguiding	<table border="1"> <thead> <tr> <th>Unit</th> <th>Evening</th> <th>Contact</th> </tr> </thead> <tbody> <tr> <td>1st Swavesey Rainbows</td> <td>Thursdays</td> <td>caroline@overroad.co.uk</td> </tr> <tr> <td>1st Swavesey Brownies</td> <td>Mondays</td> <td>swaveseybrownies@outlook.com</td> </tr> <tr> <td>2nd Swavesey Brownies</td> <td>Wednesdays</td> <td>secondswaveseybrownies@outlook.com</td> </tr> <tr> <td>1st Swavesey Guides</td> <td>Thursdays</td> <td>swaveseyguides@gmail.com</td> </tr> <tr> <td>1st Swavesey Rangers</td> <td>Thursdays</td> <td>swaveseyrangers@gmail.com</td> </tr> </tbody> </table>	Unit	Evening	Contact	1st Swavesey Rainbows	Thursdays	caroline@overroad.co.uk	1st Swavesey Brownies	Mondays	swaveseybrownies@outlook.com	2nd Swavesey Brownies	Wednesdays	secondswaveseybrownies@outlook.com	1st Swavesey Guides	Thursdays	swaveseyguides@gmail.com	1st Swavesey Rangers	Thursdays	swaveseyrangers@gmail.com
	Unit	Evening	Contact																
	1st Swavesey Rainbows	Thursdays	caroline@overroad.co.uk																
	1st Swavesey Brownies	Mondays	swaveseybrownies@outlook.com																
	2nd Swavesey Brownies	Wednesdays	secondswaveseybrownies@outlook.com																
1st Swavesey Guides	Thursdays	swaveseyguides@gmail.com																	
1st Swavesey Rangers	Thursdays	swaveseyrangers@gmail.com																	
Swavesey Spartans	Swavesey Spartans (swaveseyspartans.co.uk) is a Chartered Standard Football Club affiliated to Cambridgeshire Football Association. The club delivers football for children aged 6 and above. The club helps with the transition to open age football. Colts football ceases at the end of a player's Under 18 season. Open age football for men in Swavesey is available through Swavesey Institute FC (separate entry in this section of the Meridian). Swavesey Spartans FC have an open age football team for ladies playing league games on a Sunday. For more information about Spartans please contact Paul Clarke (swavesey.chairperson@gmail.com) or Mrs Paula Land (swavesey.secretary@gmail.com)																		
1 st Swavesey Scout Group	All sections meet at the Scout Hut on the SVC site Beavers Day: Thursday 18:00 to 19:00 Contact: John Pawson - Beaver Leader john.pawson@1stswaveseyscoutgroup.org.uk																		
	Cubs Day: Tuesday 18:15 to 19:30 Contact: Steven Wilson - Cub Leader steven.wilson@1stswaveseyscoutgroup.org.uk																		
	Scouts Day: Wednesday 19:00 to 20:30 Contact : Marian Bentley - Scout Leader Marian.Bentley@1stswaveseyscoutgroup.org.uk For any other enquiries please email info@1stswaveseyscoutgroup.org.uk																		
Swavesey Early Years and Playwork Centre	Swavesey Early Years and Playwork Centre are based in their own purpose-built unit on the primary school site. It comprises Early Years children (aged from 2 years and 6 Months) between 9am and 3pm (formerly Swavesey Pre School) and we provide activities and care for primary school aged children before and after school. Breakfast Club runs from 7.30 am to 9am and After School Club from 3.15pm to 6pm. For information please contact Carol Panther (Early Years and Playwork Manager) by email: eyandp@swavesey.cambs.sch.uk or by phone (01954) 273312 Ext 2 or 07803 812221.																		
Swavesey Community Choir	If you enjoy singing and having fun then come and join Swavesey Community Choir. We meet every Wednesday in term time in Fen Drayton Village Hall, Cootes Lane, Fen Drayton from 7.45pm - 9.30pm. You don't need to be able to read music and no auditions needed, tenor and bass voices particularly welcome. For further details contact Julie Holmes julieholmes78@gmail.com Website: www.swaveseycommunitychoir.co.uk																		

British Tang Soo Do Institute	British Tang Soo Do Institute practices the Korean martial art of Tang Soo Do. Our club training covers self defence techniques and many aspects of fitness including flexibility, coordination, conditioning, balance and discipline helping to promote a healthy lifestyle. For further information please contact Master Jeff Cockram on 07863 345681 or jeff@btsdi.co.uk Or see our website: www.btsdi.com
Swavesey Tang Soo Do Club	Swavesey Tang Soo Do have classes on a Monday, Tuesday and Wednesday. Classes are in the primary school main hall at 6pm. The contact details are Master Louise Morton on 07919 050261 or email enquiries@swaveseytsd.co.uk . The website is www.swaveseytsd.co.uk
Allotments in Swavesey	Down Hale Road towards the windmill and on the right there are 61 plots, mostly 150 sq yds (125 m2) in area, backed up by eight water tanks. Large yields of a wide range of high quality vegetable, fruit and flower crops can be grown successfully. If you are interested in joining the waiting list contact Val Sage Tel (01954) 230853
British Legion	For information contact:- Secretary - Angela Dye. (01954) 277453. email: dyeangela0@gmail.com
Swavesey Badminton Club	Located at the Swavesey Village College Sports Centre. The Club offers a high standard of play at club nights on Tuesdays 7pm to 8pm and on Fridays from 6.30pm to 9.30pm. We play competitive badminton in the Cambridge leagues and run men's, women's and mixed teams. Contact Helen Taylor on (01954) 230997 Email: enquiries@swaveseybadminton.net Website: www.swaveseybadminton.net
Swavesey Billiards and Snooker Club	For information/membership please contact Graeme Waites (01954 230113) Email graham.waites566@btinternet.com
Swavesey Camera Club	At Swavesey Camera Club we are proud to cater for photographers of all standards. For more information visit our website at: www.swaveseycameraclub.co.uk . We meet every Thursday, 7.30 - 9.30pm, Lecture Room, SVC. Non-members welcome - £4 charge (first visit free). For further details please ring Simon Shore (01954) 230848
Swavesey Squash Club	Swavesey Squash Club has three international standard squash courts, in our recently refurbished clubhouse, on the Swavesey Village College site. The club has a number of weekly sessions running, suitable for beginners, improvers, and more advanced players. Unlimited use of the facility from £17 a month. A welcoming and active community club with social events and opportunities for competition. Visit our website for more details or contact Ali Loke on 07776 176866/ ali@alilokesquash.com . www.swaveseysquash.com
Swavesey & Over Cycling Club	We meet regularly throughout the year, with rides most weekends and also weekdays on spring and summer evenings. As a Cycling UK affiliated club our goal is to explore a joint passion for cycling in a safe, inclusive and social way. We aim to organise events throughout the year from day & weekend rides in the UK and long weekend trips in Europe. Contact: John Craven Email: socccommittee@gmail.com Facebook: https://bit.ly/3GJCKSZ SOCC or Website: https://swaveseyovercc.wixsite.com/socc

Over Netball Club	Local friendly club, everyone welcome, from back-to-netballers to seasoned players. We have teams playing in CDNL and Fenland Netball league. Training is on Tuesdays 7-8:30pm at Northstowe Secondary School. First month is free, £15 per month thereafter. Contact overnetballclub@gmail.com for more information.
Over & Willingham Cricket Club	We have 2 open age (adult) cricket teams in the Cambridgeshire Saturday afternoon league playing 40 over cricket between the start of May and the end of August. If you are interested in joining our club, please get in touch with one of the club officials, come along to one of our training sessions or approach any club member on our matchdays (Saturday's). Contact Jane Reeson if you are interested. email - reesonhcx46k@aol.com ; Telephone 07768 540146; or Facebook - Over and Willingham CC, or Website - overandwillingham.play-cricket.com
Swavesey Music School	Meets every Saturday of term time at Swavesey Village College. For further details see: www.swaveseymusic.co.uk/
Swavesey District Bridleway Association	A liaison group representing local horse riders whose main aim is to protect existing and create safe new horse riding links between all local villages. New members welcome. Regular Newsletter/ Social events calendar. Please contact Sue Rogers (01954) 232758
Swavesey & District History Society	Meet every third Tuesday in the month, 7.30pm, Carole Shaw room, SVC. Contact Carolyn Redmayne, Secretary (01954) 230037
Swavesey Institute Football Club	Swavesey Institute FC have 2 teams in the Cambs County Saturday afternoon leagues. For information about the club or if you are interested in playing open age (adult) football for the village please contact Martin Pickering on 07737 391445
Linedance	Linedance classes held on Wednesday mornings at the Bethel Baptist Church 9-30 to 11-30 am. Beginners always welcome. Contact Deborah Walker (01954) 231382 Email: deborahwalker105@talktalk.net
Swavesey & Over Conservation Society	At the moment we organise interesting walks If you need a lift: Phone: Trevor Grange - 01954 230119 or Pat Miles - (01954) 780485. Guests Are Always Welcome!
Swavesey & Over Tennis Club	Club night 1 October to 1 April is on Monday, 7.00 to 9.00pm. From 1 April - 30 September there will be club nights on both Mondays and Wednesdays. We welcome new members from anywhere in the locality. Further information from s.taylor996@btinternet.com https://swaveseyovertennis.wixsite.com/sotc
Swavesey RADSoc	Friendly local drama group staging two or three productions a year. New members always welcome. Contact: Nathalie Balzano: nathaliewoodward@hotmail.com Visit our website at www.swaveseyradsoc.org.uk
Swavesey W.I.	We meet every second Monday of the month at 7.30pm in the Memorial Hall. New members are always welcome to enjoy a variety of invited speakers and have a chat and cup of tea/coffee afterwards. For further information contact Margaret Guest tel (01954) 202757
Women's Walking	Women's Walking on Mondays and Fridays at 10:00am. Meet on Market Street green. Walk for approximately one hour on pathways in and around Swavesey. A chance to exercise and chat. - Reasonably robust footwear recommended. All welcome.

THE MERIDIAN ADVERTISER

April/May 2025

Landscaping & Garden Services

Grower & Supplier of Trees, Shrubs & Hedges

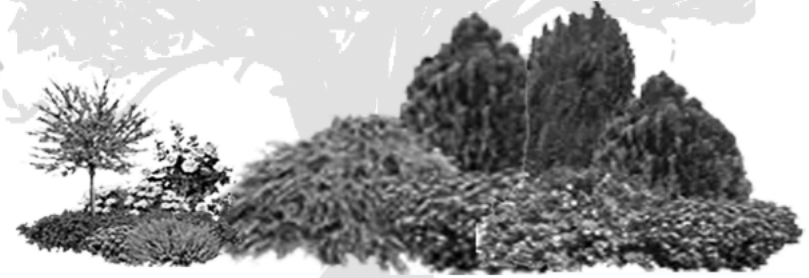


- ✧ Supply and or planting of trees, shrubs and hedges
- ✧ Cutting / Pruning of trees, shrubs and hedges.
- ✧ Land Preparation, spraying, lawn seeding and turfing
- ✧ General maintenance, clearance and repairs
- ✧ Fencing, Gates and Paving

For a FREE estimate phone :- 07786699977

or visit www.eparish-landscaping.co.uk

or Email : edwin@parishnet.co.uk




RPJ SOLUTIONS

PAINTING SOLUTIONS

INTERIOR AND EXTERIOR

CALL TODAY FOR MORE INFORMATION
AND TO ARRANGE A FREE QUOTE!

 RPJ Solutions

Phone: 07794 732097

Email: ryan@rpjsolutions.co.uk

Web: www.rpjsolutions.co.uk

ALEX ARTHURS

BUILDING SERVICES

ALL ASPECTS OF BRICKWORK UNDERTAKEN

EXTENSIONS • TRADITIONAL BRICKWORK • ALTERATIONS
GARDEN WALLS • CHIMNEY REBUILDING • REPOINTING
FIREPLACES • STONE SILLS AND THRESHOLDS

PAVING • SLABS & NATURAL STONE • BLOCK PAVING
CONCRETING • GROUNDWORKS • FENCING • DECKING

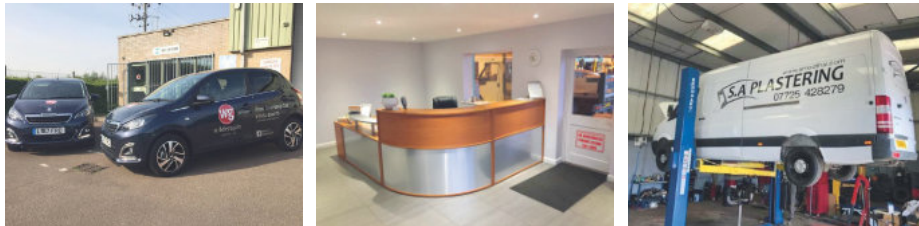
FOR A FREE QUOTATION & ADVICE CALL ALEX ARTHURS

01954 232050 or 07841 433652



wilderspin
GARAGE LTD

A local family-run business



**MOTOR HOME SERVICING -
MOT'S & HABITATION CHECKS
ALL DONE ON SITE**

SERVICING & REPAIRS

EXHAUSTS | BATTERIES | TYRES | CLUTCHES | BRAKES | TIMING BELTS

M.O.T. TESTING CENTRE

CLASSES 4,5 & 7 | MOTOR HOMES | MINI BUSES
CARS | VANS | LIGHT COMMERCIAL

FREE
USE OF
COURTESY CARS

AIR
CONDITIONING
SERVICING

FREE
COLLECTION AND
DELIVERY SERVICE



OAKTREE ROAD | FEN DRAYTON | CB24 4SS
Tel: 01954 230273 | Email: wilderspingarageltd@gmail.com
www.wilderspin-garage.co.uk



LB ROOFLINE UPGRADES

With over 30
years of
experience

Mobile: 07477775551
Landline: 01223961285
Please check out our website and our checktrade
LBroofline.co.uk

Welcome to LB
roofline
upgrades.

We carry out the following, all Upvc work including, new fascia and soffits, new guttering and dry verge system. Aswell as all general roofing work

Sales: Servicing Salt

- Supply & Installation Service
- Servicing & Repairs
- Drinking Water Systems
- Salt Delivery & Collection

AQUASTREAM
Water Softeners limited

01954 230898

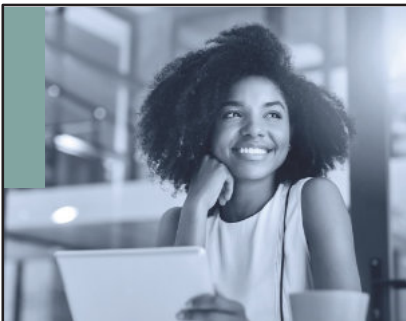


www.aquastream-softeners.co.uk

Unit 17 Meridian, Buckingham Business Park, Anderson Road, Swavesey, Cambridge, CB24 4AE

Authorised
Ecowater & Kinetico
Dealership





Feel confident and in control

Financial advice for the future you imagine.

We're here to help you feel in control of your money. Not the other way around.

Let's start a conversation.

James Tait
BA (Hons) DipPFS
Director

01954 231768
07768 305151
james.tait@sjpp.co.uk
www.taitfinancialservices.co.uk



Tait Financial Services Ltd is an Appointed Representative of and represents only St. James's Place Wealth Management plc (which is authorised and regulated by the Financial Conduct Authority) for the purpose of advising solely on the group's wealth management products and services, more details of which are set out on the group's website www.sjpp.co.uk/products. The 'St. James's Place Partnership' and the titles 'Partner' and 'Partner Practice' are marketing terms used to describe St. James's Place representatives.

SJP Approved 20/11/2024

SJP3559F_DS B2 (10/23)



Andy Tibbett & Sons Painting & Decorating



- * All internal & external work carried out to a high standard
- * Trade references can be supplied
- * Very competitive pricing
- * A prompt & polite service from a name you can trust



Telephone: 01954 230810

Mobile: 07717 493723

Email: andrewtibbett@hotmail.co.uk



Ash Croft Veterinary Surgery

169 St. Neots Road,
Hardwick, Cambridge CB23 7QJ

Mon.-Fri. 8.30am - 10.30am

4.30pm - 7.00pm

Saturday 9.00am - 11.00am

Sunday 10.00am - 11.00am

Tel: 01954 210250

Unit 1 Pendrill Court, Ermine Street North
Papworth Everard, Cambridge CB23 3UY

Monday, Wednesday, Friday 11.30am - 1.30pm

Saturday 12noon - 1.30pm

Tel: 01480 831615

Laura Wood MA, VetMB, MRCVS

Simon Shore MA, VetMB, MRCVS

Dragan Tomovic BVSc, MRCVS

Consultations by appointment only

Swavesey Physio

**Chartered
Physiotherapist**
Susannah Jennings BSc (Hons)
MCSP, HCPC, MAACP



Musculo-Skeletal Injuries:

- Back & Neck Pain
- Muscle & Joint Pain
- Rehabilitation after Surgery
- Postural Conditions (including Post & Ante Natal)
- Mobility Difficulties

Treatments Available:

- Joint Mobilisation & Manipulation
- Soft Tissue Massage and Stretching
- Acupuncture
- Mobility Assessments
- Electrotherapy
- 1:1 Clinical Pilates
- Rehabilitation Programs

31 Thistle Green, Swavesey, Cambridge. CB24 4RJ.
Tel: 07970 548205

Email: susie@swaveseyphysio.co.uk
Web: www.swaveseyphysio.co.uk

G B Builders

NO JOB TOO SMALL

FOR ALL MAINTENANCE RENOVATIONS
AND DIY WORK

All general building repairs & odd jobs
Specialist in Painting & Decorating
Groundwork & Grass cutting

- Fencing
- Brickwork & Plastering
- Plumbing
- Driveways, Paths, Patios
- Carpentry
- Slabbing
- Roofing
- Concreting
- Tiling
- Blockpaving
- Drainage
- Guttering

Call Today
07877 742420
Or 01480 437511
g.builders@yahoo.co.uk

M.B. FLACK

Interior & Exterior
Painter & Decorator
& Repairs

30+ Years Experience
in the trade.

Free Estimates

Telephone

01954 231 915

La' Mac

Hairdressing for all
the family



- ◆ Friendly Service
- ◆ Traditional & up to date styling
- ◆ Fully trained in all colouring techniques
- ◆ Open Tuesday - Saturday
(late 7.00pm Wednesday)

We aim to make your visit as pleasant as possible, with a professional and friendly atmosphere to help you relax.

If you are thinking of a change please pop in - we will be pleased to help.

☎ 01954 231 445

2a Market Street Swavesey
Cambridgeshire CB24 4QG

F.W. COOK FUNERAL SERVICE

49 Church Street Willingham

Tel Willingham 260325

Andrew Cook Dip FD Kay Cook Dip FD MBIE

A long established family business providing a personal 24 hour service

Golden Charter pre-payment funeral plans available

COOK'S MEMORIALS

New memorials and refurbishments
Brochures available on request



DDB Home Solutions Limited

Making your house a home

We are a company based in Needingworth specialising in kitchen and bathroom installations and can also supply the following services;

- Carpentry and Joinery
- Plumbing
- Electrical installation – Part P registered
- Floor and wall tiling
- Less-abled Bathrooms and Wet Rooms



We are a member of the Institute of Carpenters and also the Guild of Master Craftsmen with over twenty years experience

Visit our website for more information - www.ddbhomesolutions.co.uk
For an informal discussion or quote please contact Darren or Jo Turnbull
Tel: 01480 495984, or email us at Darren@ddbhomesolutions.co.uk



ELECSA



C & C BLINDS

Specialists in Blinds | Any size | Any colour



Vertical Blinds • Roller Blinds
Venetian Blinds • Repairs • Roman • Pleated
Perfect Fit • Wooden • Roof Blinds
Awnings • Fitting Service

10% OFF
With this leaflet

Free Estimates & 1 Year Guarantee

Tel: 01223 211 171 • Mob: 07761 262070
Email: colincoleman64@hotmail.com

Rothwell's
Carpet Cleaning

**Carpet, Stone Floor,
Upholstery & Rug Cleaning**

A few points that make us stand out,

Rothwell's has been in business since 1993
We're an honest local family firm.
Our large truck mounted machines mean
more cleaning & drying power
for the best results possible.
Members of both the NCCA and TACCA.
We will move the furniture.
100% satisfaction or it's FREE.

*Call Oliver and Max Campbell
for expert help today.*

01223 832 928
www.Rothwells.biz

LIGHT REMOVALS

Small Houses to Single Items

ANY DISTANCE
7 Days a Week

For a Free Quote

Telephone:
01480 352220
07711 556833

www.cambslightremovals.com



**Flooring & Furnishing
Care Specialist**

- Carpet Cleaning
- Upholstery Cleaning
- Fine Rugs Cleaning
- Stone Floor Cleaning
- Wood Floor Sanding

Call us now on:
01223 790796

Please quote "Swavesey Meridian"
www.artofclean.co.uk / info@artofclean.co.uk
Art of Clean, Denny Lodge Business Park,
Ely Road, CB25 9PH
www.artofclean.co.uk

R.A. Denton

Painting & Decorating

High Quality

Industrial

Commercial

Domestic



102, Stonefield
Bar Hill
Cambridge
CB3 8TB

782472



Struggling with Long Covid?
 Living with chronic pain?
 Can't get a good night's sleep?



Five Element Acupuncture

- diagnoses the root cause
- calms your nervous system
- relaxes tense muscles
- rebalances your body
- nourishes mind and spirit

Discover how working on your health with a fully qualified Five Element acupuncturist can transform your outlook.

Phone or email today for your FREE 20-minute consultation with Willingham acupuncturist Kaye Rooney
 Lic. Ac., B.A Hons. MBAcC
 kaye@kr-acupuncture.com
 07593 058748



Find out more at
kr-acupuncture.com

Contact us:
david@rosegatefarm.co.uk
 07922 588171



Rose and Crown Road Road, Swavesey

Butchery Open Fridays (8.30 am - 5.30 pm) & Saturdays (8.30 am - 1.30 pm)

www.rosegatefarm.co.uk

Bespoke Butchery – butchered to suit your requirements

BEEF

- Primarily from our own Hereford / Angus herd
- All at least 21-day aged

LAMB

- Swavesey born and bred
- individual cuts, or ¼, ½ or whole lamb packs available

PORK

- Bred & reared here at Rosegate Farm.
- Home-made sausages, dry-cured bacon and gammons (smoked and unsmoked)
- Cooked Ham

CHICKEN (sourced from Diaper Poultry)

- Sutton Hoo Free Range
- St George Chicken

BBQ Meats – Burgers – Kebabs – Glazes

See you in the butchery!





Garolla garage doors are expertly made to measure in our own UK factories, they're strong and solidly built. The electric Garolla door rolls up vertically, taking up only 8 inches inside your garage, maximising valuable space. Our experienced installers will fit your new door and they'll take away the old one too, so there's no mess.

Give us a call today and we'll come and measure up **FREE** of charge.

GAROLLA
 ROLLER SHUTTER DOORS

www.garolla.co.uk

CALL US TODAY ON:
01954 750 018
 MOBILE:
07537 149 128

LINES OPEN 7 DAYS A WEEK

Now only £895*
 for a fully fitted electric garage door.

WAS £1354 INCLUDING VAT.

Gotta get a Garolla.

CE APPROVED

Trustpilot 4.8 out of 51 Over 2,800 reviews

*Offer valid for openings up to 2.6m wide & including 2 remote controls, 55mm white slats, internal manual override.

YOUR COMPLETE

GAS, HEATING AND PLUMBING COMPANY

- PLUMBING
- HEATING
- GAS
- BATHROOMS
- WATER SOFTENERS
- PROPERTY MAINTENANCE



01954 204044
entiregroup.co.uk
service@entiregroup.co.uk

A distributor for Harvey Mini max water softener




AJ Carpentry



Local, family run business who thrive on transforming project dreams into a stunning reality!

Extensions – Conversions – New Builds – Groundworks – Bathrooms

Kitchens – Flooring – Electrical works – the list is endless!

www.ajcarpentry.co.uk

07989 341724 / 07812 671495

Stamp Chiropody & Podiatry

Casey Stamp MCPod BSc (Hons)

HCPC registered CH15068



- General chiropody - nails, hard skin & corns
- Diabetic foot care
- Children's Feet - Growing pains, Verrucas, etc.
- Sporty Feet & associated injuries + pains
- Ingrowing toe nails
- Custom made Orthotics/insoles
- Dancing feet - we'll keep you on your toes
- Biomechanics & Gait analysis

New Clients Always Welcome

Find us at:

1E Highgate Farm,
Over Rd, Willingham,
CB24 5EU

Tel: 07807 505534

www.stamppodiatry.co.uk

Accountancy & Taxation Services



Tax Returns
Business Accounts
Bookkeeping
VAT Returns
Payroll
Audits

L.A. Wells FCCA CTA

Chartered Certified Accountant, Chartered Tax Advisor

4 Scone
Fenstanton
Huntingdon
Cambridgeshire
PE28 9QG

Tel: 01480 466 197



www.lwells.co.uk

Vintage travel your own pool

...holidays with added peace of mind.

Your Local
Travel
Company

Handpicked Villas with private pools.
Over 30 years of creating perfect holidays.
Book with confidence.



• Greece • Spain • Lanzarote • Balearics • Portugal • Turkey • France • Italy • Croatia • Cyprus

01954 261 431
www.vintagetravel.co.uk



MAGAZINE ADVERTISING RATES

ADVERTISING RATES AS FROM FEBRUARY 2025
For a one year inclusion i.e. six issues.

Size	Advertiser	Magazine
Full page	£286	£379
Half page	£149	£214
Quarter page	£100	£132

The following rates are for one inclusion only and as a premium rate is already charged will be positioned in the magazine section:-

Half page one inclusion only £100

A small charge may be made for creating and amending artwork

For all advertising details please contact:
April Martin Tel: 01954 200533 or
Email: adverts@swaveseymeridian.org.uk



Plumbing and heating supplies
to the trade and public



We are a local independent company supplying
all your plumbing & heating needs, including:

**Bathroom Taps • Boilers • Bathroom Suites
Underfloor Heating • Central Heating Radiators
Heated Towel Rails • Showers • Kitchen Taps
Sinks • Baths • Sanitaryware
Plastic Plumbing Systems • Fittings**

Do not hesitate to ring, email or visit...

Unit 10, Norman Way Industrial Estate, Over, Cambridge CB24 5QE.
Tel: 01954 230268. E-mail: info@dandtsupplies.co.uk www.dandtsupplies.co.uk

NOTIFICATION OF MAJOR EVENTS

Please use this form to notify us of any major events you are organising so that we can publish the dates in the magazine and on the website at www.swaveseymeridian.org.uk

It is hoped this will avoid major events clashing on the same day. Please send to the Editor, 14 Black Horse Lane, Swavesey.

Event _____

Location _____ Date _____ Time _____

Contact Name _____ Tel No. _____

BIRTHDAYS, ANNIVERSARIES & SPECIAL OCCASIONS

If you would like to mark any occasion that is special to you or somebody that you know by announcing it in this magazine, please fill in the form below.

Also supply your name and contact details, and return to the Editor by the copy date.

We will endeavour to include it in our next issue.

SHORT MESSAGE:

USEFUL TELEPHONE NUMBERS & WEBSITES		
Doctor's Surgery (Swavesey)	01954 230202	
Doctor's Surgery (Over)	01954 231550	
Police:		www.cambs.police.uk
Emergency	999	
All Non Emergency Calls	101	
Swavesey Parish Council	01954 202982	www.swavesey-pc.gov.uk
Swavesey Pre-school Enquires	01954 273312 Ext 2	eyandp@swavesey.cambs.sch.uk
Swavesey Primary School	01954 273312	www.swavesey.cambs.sch.uk/
Swavesey Village College:	01954 230366	www.swaveseyvc.co.uk
Community Office	01954 234488	www.swaveseyvc.co.uk/community-education/
Swavesey Post Office	01954 232311	
Cambridgeshire County Council:		www.cambridgeshire.gov.uk
General Enquiries	0345 045 5200	
Library Service	0345 045 5225	www.cambridgeshire.gov.uk/residents/libraries-leisure-culture/libraries
South Cambs District Council	01954 713000	www.scambs.gov.uk
Electricity (UK Power Networks):		
Emergency & Power Cut Report Line	0800 783 8838	www.ukpowernetworks.co.uk
Gas Emergencies (National Grid)	0800 111999	https://www.nationalgrid.com/gas-transmission/safety-and-emergencies/emergencies-and-safety-advice
Water (Cambridge Water Company) Leak:	0800 316 7676	www.cambridge-water.co.uk
Sewage (Anglia Water) Emergency	03457 145 145	www.anglianwater.co.uk
Environment Agency (Flood Line):	0800 807060	www.environment-agency.gov.uk
Samaritans	116 123	www.samaritans.org
Addenbrooke's Hospital:	01223 245151	www.addenbrookes.org.uk
Hinchingbrooke Hospital	01480 416416	www.hinchingbrooke.nhs.uk
NHS Direct	111	111.nhs.uk
Airports + Road & Rail:		
Local Taxi: Alpha Cars	01954 232300	www.alphacarsonline.co.uk
Gatwick	0844 892 0322	www.gatwickairport.com
Heathrow	0844 335 1801	www.heathrow.com
Luton	01582 405100	www.london-luton.co.uk
Stansted	0808 169 7031	www.stanstedairport.com
Traveline (Bus Coach & Rail)	0871 200 22 33	www.traveline.info
Local Timetables:		
Cambridgeshire Bus Information		www.cambridgeshirebus.info
Stagecoach	01223 433250 0345 241 8000	www.stagecoachbus.com
National Express Coaches	03717 81 81 81	www.nationalexpress.com
Whippet Coaches	01954 230011	www.go-whippet.co.uk
National Rail	03457 48 49 50	www.nationalrail.co.uk
Veterinary Practices:		
Village Vet (Longstanton)	01954 780027	www.villagevet.co.uk
Ash Croft (Hardwick)	01954 210250	www.ashcroftvet.co.uk



The Five Pub Challenge

Back by popular request, the 5-pub Challenge walk. See old friends, make new ones; perhaps walk as a group. All proceeds to go to the Over Day Centre, this year to help raise funds for client activities and capital items.

Meet at Over Day Centre, Drings Close, CB245NZ from 10.00am, for a 12.5 mile walk through the beautiful Cambridgeshire fens to the Pike & Eel, the Ferry Boat, the Three Tuns, the White Horse and back to the Over Community Centre.

Minimum donation of £15 per adult, children free. Under 18s are very welcome but must be accompanied by a responsible adult. The length of the route may make it unsuitable for younger children.

For details and to register, please view :



www.overdaycentre.co.uk/fundraising/5-pub-challenge-2025/
or call the Day Centre
01954 231807

You can register online and donate before the day, the quickest way, or you can print the form yourself and complete then donate with card payment or cash on the day. If you are unable to join us but would like to donate, please go to:
www.justgiving.com/page/overdaycentre-5-pubs-may-2025

Event kindly supported by:



Ash Croft Vets

St Andrew's Church, Swavesey

Plant Sale

Saturday, May 17th

10 - 2pm

Children's
Activities



Shrubs,
flower and
vegetable
plants for
sale

Refreshments
available



Free Entry