

THE MERIDIAN SWAVESEY



No. 215 August/September 2025



EDITORIAL

We hope you are enjoying the Summer come rain or shine and some rain would be welcome.

Check out our website at <https://www.swaveseymeridian.org.uk/leisure.html> for places to visit and entertainment venues to keep you entertained during the holiday.

Tiger 1, a new bus service routed through Swavesey, is now operating Monday to Saturday between Cambridge and Huntingdon. See the timetable and all the stops at <https://bustimes.org/services/t1-huntingdon-cambridge> Please try out and use this service so that it can continue to operate.

Changes are coming to our telephone services where the landline phones will now operate via broadband and the old copper connection will be removed. This has implications for anyone using personal alarms or any equipment other than phones connected to the telephone system See the article on page 14 for details. Mobile phones are not affected and I believe you can retain your existing phone number.

Deadline for the October/November issue is **August 20**.
Please send articles to:- editor@swaveseymeridian.org.uk

Ed

IN THIS ISSUE ...	
Front Cover - Black Squirrel by Edwin Parish	
Inside Front Cover - Bee on Thistle by Peter Morris	
Inside Back Cover - Spider by Edwin Parish	
Back Cover - Fireflies Netball Club	
Editorial	page 1
Meridian Committee	page 2
Major Events List	page 3
Dates for your diary and forthcoming events	page 4
Club Reports	Page 5-11
Miscellany	page 12-23
Medical News	Page 24
School Information	page 25-28
Parish and County news	page 29-31
Churches	page 32-37
Community Groups & Charities table	page 39
Club Information	page 40-42
Advertiser	Page 43-58
Advert Costs, Major Events & Birthday forms	Page 58-59
Useful Telephone Numbers	page 60

MERIDIAN COMMITTEE

Editor:	April Martin	Tel: 01954 200533
Treasurer	David Gedny	Tel: 01954 231305
Production:	Alan Morris	Tel: 01954 202664
Advertising:	David Gedny/April Martin	Tel: 01954 231305 / 01954 200533
Distribution	Neil Jordison	Tel: 01954 204390
Subscriptions	Neil Jordison	Tel: 01954 204390
Complaints	Maureen Hadfield	Tel: 01954 230414
Proofreading	Alison Lucas	Tel: 01954 232984
Website:	Alan Morris www.swaveseymeridian.org.uk	Tel: 01954 202664
Emails:	editor@swaveseymeridian.org.uk	
	advert@swaveseymeridian.org.uk	
	webmaster@swaveseymeridian.org.uk	
	distribution@swaveseymeridian.org.uk	

Major Events List

This list is intended to avoid major events clashing on the same day. It will only work if we are advised of all such events, so please let us know as soon as you can confirm the details.

A form is available at the back of this magazine. We will list them in this section of the Magazine and also on our website at:-
www.swaveseymeridian.org.uk

No Events Submitted For This Issue

SUMMIT



LANDSCAPES

PAVING - DRIVEWAYS - BRICKWORK
CARPENTRY - GROUNDWORKS



www.landscapingpaving.co.uk
PHONE: 01223-929394

CHIMNEY SWEEP

J. L. Wight

City & Guilds Qualified

Advice given /
Problems solved



Certificates issued

Fully Insured



HETAS registered

01954 253315

www.camsweep.co.uk
26 Cow Lane, Rampton

ALAN'S CARPETS

**Carpets and Vinyl
Supplied and Fitted**

We have been in the carpet trade
for over 47 Years!

Samples To Your Home

Measure

Quote

Express delivery & fitting included

Phone 07790 681317

or

07790 544250



DATES FOR YOUR DIARY



August		
Friday 1	Refuse Collection	Green & Blue Bins
Friday 8	Refuse Collection	Black Bin Collection
Friday 15	Refuse Collection	Green & Blue Bins
Monday 18	Parish Council	Full Council Meeting
Friday 22	Refuse Collection	Black Bin Collection
Friday 29	Refuse Collection	Green & Blue Bins
Friday 5	Refuse Collection	Black Bin Collection
Thursday 11	Parish Council	Planning Meeting
September		
Friday 12	Refuse Collection	Green & Blue Bins
Friday 19	Refuse Collection	Black Bin Collection
Monday 22	Parish Council	Full Council Meeting
Friday 26	Refuse Collection	Green & Blue Bins

CLUB REPORTS

Swavesey WI News



Meetings coming up.....	
August	Summer Picnic
September 8 th	"Fig leaves to Feather Boas". Talk by Fran Saltmarsh.
October 13 th	"Food, Farming and Fishing". Talk by Jenny Jefferies

In May, Tim Forman from SERV Suffolk and Cambridgeshire Blood Runners gave us a very informative talk about this valuable service which is served by volunteers and does not receive any funding from the Government or the NHS, relying totally on donations.

It was launched in May 2011, providing an essential service delivering urgently needed blood products to our NHS hospitals, hospices and to vulnerable patients. They also deliver donated human milk to various milk banks. This service runs 24 hours a day,

In June our members enjoyed visiting fellow members' gardens up and down the village.

The weather was glorious and tea and scones were enjoyed in the garden of member Margaret Guest.

For further information on any of our meetings or membership please ring Glesny Sheppard 01954 201731 or Deirdre Burgess 01954 230897.

HIDDEN BEAUTY

BY REBECCA



NAILS | LASHES | WAXING | MASSAGE

Home based salon offering a range of professional beauty treatments. Whether it's a relaxing, stress relieving massage A facial using vegan & cruelty-free Husk & seed products fabulous eye lash extensions or a pampering manicure or pedicure

Hidden Beauty is here for you.

Gift vouchers available

07815 443009
BECCASTART@HOTMAIL.COM
f HIDDENBEAUTYBYREBECCA

JASON KIRBY Professional Painting & Decorating Ltd

All Aspects of Internal & External Decorating
Period, Residential & Commercial Properties.

Wallpaper & Mural Install

Kitchen Cabinet & Furniture Re-Sprays.

Floor Sanding & Restoration.

City & Guilds, NVQ Qualified.

Service, Quality & Reliability.



01954 211775
www.jasonkirbyltd.co.uk

CHIROPODIST/ PODIATRIST

I can offer a professional service

For further details please ring
01954 201256
07494 196065

Biomechanical assessments &
orthotic therapy also available.

Michelle Dolan
HCPC Registered Chiropodist/Podiatrist
CH34864

e-mail: michelledolan@outlook.com



Spartans Day – A Celebration of Football and Community

Did anyone make it down to the green on 15th June for our annual Spartans Day feast of football? If you did, you won't have been disappointed—what a fantastic day!

Spartans Day is our season finale and the only time all age groups, from Under 7s through to U16s, come together to celebrate everything that makes our club special. With mini 5-a-side tournaments running throughout the day, it was great to see so many players enjoying the beautiful game as one club.

We also held a taster session for prospective Under 6 players, and around a dozen little ones joined in. Watching them run around full of excitement was a joy. The contrast between their first steps in football and our Under 16 players receiving their 10-year tankards was striking. Imagine those little ones getting their own tankards in 2035!

Of course, it wasn't just about the football. Fundraising is also a key part of the day, and this year's raffle didn't disappoint, with many fantastic prizes on offer. One of the biggest laughs came when a hair treatment prize went to a rather follically challenged gentleman!

A BBQ, sweets and cake stall, and an ice cream van kept everyone well-fed and smiling too.

We were proud to present an incredible 176 participation trophies as well as 21 players from across our Under 16 boys and girls teams receiving the coveted 10-year tankards. A true celebration of dedication and passion across the club.

While our ethos remains focused on providing fun, inclusive football for all, we rightly also took time to recognise competitive success.

Congratulations to our Under 13 and Under 16 boys who finished runners-up in their leagues—and an even bigger shoutout to the Under 14 girls, who went one better and were crowned league champions! A fantastic effort from all involved!

None of this would be possible without our amazing coaches and executive committee members who give up so much of their time to ensure the young people of Swavesey and around have a club to be proud of. Without them we just do not exist.

Special mentions go to Rob Sayward for leading the organisation of the event, and to Kate Moss and Kev Ward for their incredible work securing raffle prizes.

As the season ends, we also say goodbye and thank you to two valued members of our coaching team: Kate Moss (Under 14 girls) and Dean Pettengell (Under 16 boys and club equipment officer). Their commitment and energy has been simply outstanding and they both leave with our very best wishes.

Spartans Day reminded us once again of the strong community spirit that defines our club. Here's to another great season of football ahead!

One Club. All Voices. United Through Football

Swavesey and District History Society

May meeting. At very short notice, John Sheppard of Swavesey spoke on The Revolution of Pumping Sewage in Cambridge. John, a Chartered Mechanical Engineer, is a Trustee at the Cambridge Museum of Technology based in The Old Pumping Station, Cheddars Lane, with an entrance on Riverside.

The Romans brought the first sewage treatment to England, but it was not until the 1800s when four major outbreaks of cholera started in large industrial cities where living conditions were often cramped and squalid and which killed many thousands of people, that the issue was taken seriously again. The population of England rose from 10 million in 1800 to 17 million in 1850 and it kept on rising. The university was growing and the local population continued to rise in Cambridge, leading to a problem with sewage and smells in the River Cam along with breathing discomfort and health problems, including typhoid. To combat the increasing problem a pumping station was built at Cheddars Lane, Milton in 1894. 37 miles of new sewer pipe were installed under Cambridge to transport sewage to the pumping station. The still-existing original chimney, nearly 60 metres tall, is a well-known landmark and in 1992, steam engineer Fred Dibnah did repairs on it. From the start, two impressive Hathorn Davey pumping engines, powered by steam pressure and which are still there, the last in the world, were installed to move the sewage on from the well beneath the engines to the treatment plant at Milton, 2 miles away. Initially the waste was simply spread on fields there to fertilise grassland for livestock, with major improvement when anaerobic digestion treatment was later installed.

Initially workers kept the fires burning 24 hours a day to produce the steam to power the engines. At first only coal was used, but in the early 1900s the council also started burning street rubbish collected by “scavengers” as boiler fuel. Addenbrookes hospital also supplied limbs for burning. Then gas and then electricity were subsequently used.

The pumping station was closed down in 1968, but volunteers maintain the steam engines, which are now on display as part of the museum. The museum is open to visitors Fri, Sat and Sun, 10.30 to 1600, with activities and events through to the autumn of 2025.

June meeting. Nearly 50 people attended to hear Richard Hewlings of Swavesey give a talk on Richard Bentley and Over Rectory. Bentley (1662 – 1742), was born in Oulton near Leeds. He was a brilliant classical scholar (Greek and Roman) and theologian and became Master of Trinity College, Cambridge. His father was a yeoman farmer but his mother had some education and was able to give him his first lessons. After attending grammar school in Wakefield, Bentley entered St John's College, Cambridge in 1676 where he received the degrees of BA and MA. He was appointed headmaster

of Spalding Grammar School before he was 21 years old. Edward Stillingfleet, the dean of St Paul's Cathedral (later Bishop of Worcester) hired Bentley as tutor to his son for six years including during attendance at Wadham College, Oxford. This allowed Bentley to meet eminent scholars and to have access to the best private library in England. After becoming Master of Trinity College in 1700 he initiated a programme of expensive renovations to the buildings, in particular the Chapel and the Master's Lodge, without consulting the Trinity Fellowship who became annoyed with Bentley. His contemptuous treatment of many eminent colleagues led to extensive controversy and litigation. A Fellow of the Royal Society, Bentley was interested in natural theology and the new physical sciences, subjects on which he corresponded with Isaac Newton – another difficult person. After ten years of stubborn but ineffectual resistance, the Fellows appealed with their complaints to the Bishop of Ely. When Bentley protested, the Fellows amended their petition but added a charge of Bentley having committed fifty-four breaches of the statutes. His interest to this History Society was that he rebuilt Over Rectory, having told Trinity College that he was rebuilding the old farmhouse, part of their estate in Over, but in truth he was building a gentleman's residence for himself! After successful, lengthy manoeuvring to avoid punishment, the Fellows again brought Bentley to trial before the Bishop of Ely in 1733 and he was sentenced to deprivation. The College statutes required the sentence to be exercised by the Vice-Master Richard Walker who was a friend of Bentley and refused to act. Although the feud continued until 1739 (about thirty years in all), Bentley remained in his post. He was a remarkable man in many ways.

Next meeting: - 16 September when the 2025/26 season starts. Arsenic's toxic legacy: People, Places, Pests and Peppermints. Neil Dickinson.



Air Cadets

2524 (Oakington) Squadron Air Cadets is actively recruiting both cadets and volunteer staff. Our next open evening for new cadets is on the 23rd September 2025, and we are always seeking to recruit new staff.

If you are interested, please contact us via email at:

2524@rafac.mod.gov.uk

To find out more about us, please visit www.raf.mod.uk/aircadets or follow our Instagram at 2524.oakington



An update from Fen Drayton Lakes

This September, on two dates only, we are bringing canoeing back to Fen Drayton Lakes. You will be led on an exploratory journey around islands and reed to experience the reserve from an angle rarely seen by visitors.

We are working in partnership with a well-respected water sports company to deliver this exciting event so no previous experience of canoeing is required. You will be in expert hands and guided by a reserve warden with many years knowledge of the site and its wildlife.

As you paddle gently through the waterways, you'll find yourself immersed in a world teeming with life. Majestic bitterns stand sentinel in the reeds, their long legs perfectly adapted for wading through shallow waters as they hunt for fish. Moorhens dart among the reeds, their distinctive red bills and black plumage adding splashes of colour to the landscape. With patience and a keen eye, you may also catch a glimpse of an otter moving through the water, a real highlight of any visit to the reserve.

Canoeing offers a sustainable way to explore these delicate ecosystems without disturbing the wildlife. The quiet, non-intrusive nature of a canoe allows you to observe animals in their natural habitat without causing undue stress or disruption. It's a chance to become a mindful observer, blending seamlessly into the environment and experiencing nature in its purest form.

So, consider grabbing a paddle, embarking on an adventure and letting the wonders of the natural world unfold before you.

To see further details and book tickets for this event and all other upcoming events, please visit:

events.rspb.org.uk/fendraytonlakes



There's a network of channels to explore by canoe

Other upcoming events at Fen Drayton Lakes

Wednesday Wander Guided Walk - Ever thought you'd like to know more about the reserve and its wildlife? Volunteer-led guided walks take place once a month, usually on the second Wednesday.

Volunteering Opportunities

We have a variety of different volunteer roles on the reserve including our practical work groups, visitor engagement and breeding bird surveys. If you would like to find out how you could get involved, please get in touch.

Email: fendraytonlakes@rspb.org.uk

Visit:

rspb.org.uk/days-out/reserves/fen-drayton-lakes

The Royal Society for the Protection of Birds (RSPB) is a registered charity: England and Wales no. 207076, Scotland no. SC037654

STILL ON HOLS

You might remember from the last issue of your magazine that we are closed for the Summer. However at the same time we advertised our Welcome Evening back in SVC on September 4th at 7:00pm. This is a free event for everyone, so please come along and meet us. If we ourselves can't tempt you, there will be drinks and small eats too. Please record this in your diaries, as there is still some time to go. Once September starts we shall be in full swing.

The first lecture shouldn't be missed, on September 11th, given by the legendary Will Cheung FRPS, a great favourite in our club. Our next lecture is on 25th,

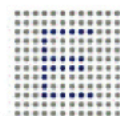
'Faces and Figures - People Photography ' by Dave Stewart.

An enjoyable evening for us all will be a homegrown event on 18th, when our own members will share their images which, we promise you, will not let the standard drop.

A good start to our year. To keep standards up there are two Advisory nights, on Tuesdays, both on Zoom, 16th for the Annual PDI Competition and 30th for the Monochrome Print Competition, which always have superb entries in any case.

Please enter all these dates in your diaries, or keep your eye on our website, looking forward to meeting you, old members and new.

Mo Hadfield
Swavesey Camera Club
swaveseycameraclub.co.uk



ENTIRE
GROUP



300007



The Complete Gas Heating and Plumbing Company

**Plumbing • Heating • Gas
Bathrooms • Water Softeners
Property Maintenance**

Tel: 01954 204044 • Web: www.entiregroup.co.uk

Email: service@entiregroup.co.uk

MISCELLANY

NEW TIGER BUS ROUTES FOR CAMBRIDGESHIRE AND PETERBOROUGH LAUNCHED



Seven brand-new Tiger bus routes launched on 27 May by the Cambridgeshire and Peterborough Combined Authority, improving public transport across the region with faster, more frequent services and better connections for our communities.

Here's a quick overview:

- Tiger 1 (Huntingdon - Cambridge) – A fast, hourly link into the city via Fenstanton, Swavesey and Longstanton. Ideal for commuters, students and residents seeking a quick and direct connection.
- Tiger 2 (Newmarket P&R - Madingley P&R) & Tiger 3 (Fulbourn - Grantchester) – These new services link key sites around Cambridge including Addenbrooke's, sixth forms and colleges, science parks and hospitals - avoiding city centre traffic.
- Tiger 4 (Newmarket - Addenbrooke's) & Tiger 5 (Soham ↔ Cambridge) – Serving East Cambridgeshire, these rural routes improve access to Cambridge from Fulbourn, Burwell, Swaffham and Soham.
- Tiger 7 (Wisbech - Chatteris) – Hourly buses connect underserved Fenland villages like Manea and Christchurch, running early morning to late evening.
- Tiger 12 (Longstanton P&R - Sutton) – A new rural route linking Sutton, Earith and Willingham to the guided Busway at Longstanton, perfect for onward travel into Cambridge.

If you'd like to view timetables or learn more information on the routes visit: <https://cambridgeshirepeterborough-ca.gov.uk/tiger-bus-routes/>

R. A. Miller
Plumbing and Domestic Heating
 Fenside, 71 Willingham Road, Over
 Cambridge CB24 5PE
 Tel: 01954 203277 Mob: 07831 853885
 Email: robert.miller@ntlworld.com



All plumbing work undertaken

- » New boiler replacement and installation with free quotation.
- » GAS boiler and GAS fire servicing Landlord Certificates.
- » Heating problems - Diagnosis and rectification.
- » General plumbing - taps, washers, pipework, showers, etc.
- » Full and partial Bathroom installation work.

For a reliable and professional service

Robert Miller MCIPHE RP

Office 01954 203 277
 Mobile 07831 853 885

REED **REED KITCHENS & BATHROOMS**
 DESIGN TO INSTALLATION
 THE COMPLETE SERVICE

We are a local established company since 1994 that manufactures a range of top quality kitchens and offers them direct to you, at an upfront price that includes everything from design to full installation. It also includes your choice of top range appliances from the likes of NEFF and Bosch.

Makeover your kitchen using our door and worktop replacement service.

Call for a free Brochure

Tel: 01954 232899 Mobile: 07711 696015
 For more details visit: www.kitchenscambridge.com
 email: glenn@kitchenscambridge.com

KITCHENS
BATHROOMS
BEDROOMS



Is your landline ready?

Landlines are changing. By January 2027*, traditional landlines will be upgraded with digital technology. This national upgrade is known as the **Digital Switchover** and will mean that landline calls will be made over the internet instead of the old telephone network. Telephone providers are responsible for switching customers to the upgraded service, but everyone is encouraged to check if and how the change will affect them, especially those who rely on their landline or use a telecare device.

For many, the change will be simple. All you will have to do is plug your landline phone into a broadband router instead of a traditional phone socket. But for others, especially those who rely on their landline for care alarms, medical devices, or staying in touch, it's important to understand what the change means and what action they need to take in order to stay connected.

Connecting Cambridgeshire is running the *Get Ready, Go Digital, Stay Connected* campaign to help local residents prepare form and feel confident about, the change.

The switchover will mainly affect

- People without an internet connection at home
- Those who **rely on a traditional land line** not already upgraded to a digital phone service
- Users of telecare and personal alarm systems, eg fall monitors or lifelines.



3 things to do today

1. Contact your phone provider to find out if the change affects you.
2. Need support? Ask a trusted friend or family member to help.
3. Use a personal or fall alarm? Contact your provider to ensure it will still work with the new system.

Look out for scams

The switchover doesn't require upfront payments. If you get a suspicious call, hang up and contact your phone provider using the official number from a recent bill.

Support each other

Know someone who might need help? A quick conversation or offer to help them call their phone provider could make a big difference.

No one should be left behind. Whether it's you, a neighbour or a relative, now is the time to ask the question: *Is your landline ready?*

For more information, visit: www.connectingcambridgeshire.co.uk/digitalswitchover or scan the QR code.

* Deadline confirmed by Openreach at time of publication.

Will Wright Memories

So we went back to Switzerland some time about the middle of January and went to the agents office in Biel and they told us they had arranged half a dozen gigs during the next couple of weeks which was fine and then they told us we all needed to liaise with a gentleman in the town, who was not only a record producer but also had a recording studio in the town close to the lakeside. Geographically Biel is located at one end of Lake Neuchatel which, obviously, is located at the other end from Neuchatel and it was interesting news that this guy was wanting a chat with us and a meeting had been arranged at his studio which was in a lovely location and in fact there were even a couple of English recording engineers working there. The result of all this was that we had agreed for him to produce an album of our songs so long as there was a separate and individual publishing company involved. Following discussions it was agreed that we were still short of 3 or 4 tunes for an album and a couple of weeks had been set aside for us to come up with the necessaries. Then to our amazement the management "team" had come up with a solution that was for us to lock ourselves away in a beautiful little alpine chalet to get on with it with as little distractions as possible, well would you believe it and they had even come up with an answer which was a chalet in the mountains. The village was called Adelboden in the Bernese Oberland, not on all maps - and the official road ended about a hundred yards or so before the track to the chalet. Never a dull moment but a truly amazing location even though we did have one interesting journey out with the snow chains very active.

There was another gentleman at that first get together in the studio who was not directly involved with our album but it turned out he was the main man responsible for the business side of Electro-voice speakers, aka EV speakers in the music world. Homework brought to light that though all E-V speakers were manufactured in the USA, they all entered Europe via the distribution system in Bern. The boss man was very interested in talking to us, which resulted in us being able to exchange all the speakers in our stage & sound system cabinets and he was very happy in doing such a deal and funny enough so were we. Funny old life innit?

The agency team thought it would be a good idea to send us to an alpine village called Adelboden right in the heart of the Bernese Oberland where there would be little in the form of distraction and we could get on & create more music & prepare ourselves for putting an album together in the lakeside studio. So after about 3 weeks or so we re-entered the real world from our Alpine paradise and started doing a few shows with all our new speakers encased.

The band had continued to use their original name of "Duffy" as they had already used it for a period of 6 months or so for their performances in the UK, Southern counties and a couple of short trips to Switzerland, not exactly centre of the entertainment industry but better known as the bank of Europe, so we left home with our fingers crossed. Paddy & myself seemed to have made a difference to the music we were creating together and the publicists were now categorising us as a " Progressive Rock " band which we all felt happy about.

This turned out to be a short trip during which we did about a dozen shows, all mainly in the Western area of Switzerland including a couple of nights in the Berne " Cavern" as it had become known before returning home to the UK for Christmas and we were also given a gig in Basle which is a unique town in so far that the railway station is in one country, the coach/bus station in another and needless to say the airport is in the 3rd country. Don't forget your passport

Our gig venue was on the Zurich side of town and was quite unique insofar that when it began to fill it was almost chock a block with Bikers - Motor cyclists & Rockers that is, any way we picked up on it & played a couple of " Steppenwolf " songs along with another couple of rocker album tracks and all went down well, in fact so well we were allocated another couple of gigs there later in the year.

When we returned back to the UK we did a couple of shows in the Guildford locality including one in a good club just off the High Street when we opened for the black country boys known as "Black Sabbath" whose vocalist was of course Ozzy Osbourne.

Selwyn's Easy "Pop Groups Over the Decades" Quiz. Part 7

Solve the mainly cryptic clues below, e.g., Liverpoolian insects 3, 7 The Beatles - we said it was easy! Note, where a group is called "The Something", sometimes "The" is dropped.

Society for those enjoying highbrow arts	7, 4
Hospital workers in East Yorkshire town	3, 8, 7
Sounds like largest primates	8
Profession often referred to as "Fuzz"	3, 6
Almost enchanted	1, 7
Sauces often used at Christmas	3, 11
Unlikely to find these apes in cold region	6, 7
Are his athletes out when clock strikes 12	5, 8, 7
Keep watch on winter's white stuff	4, 6
Sounds like Good Life character with heart stimulators	5, 3, 3, 10

You will find the answers to this puzzle on page 25

Quality Bespoke Secure Storage

Space for all your storage needs

Easy to open & fast to access. High security with PIN codes, HD CCTV cameras & individual room alarms. Choose as little or as much space as you really need, for any length of stay, with no long term commitment. Clean, dry, ventilated & condensation free. Friendly & helpful service with packaging available. Open to customers everyday from 7am to 9pm. Viewings arranged by appointment.

MoreSpace
 • Home • Document • Commercial

Located at Manor Farm, Graveley, PE19 6PH. Mention SMM22 to receive £5 discount on your first month of storage room rental.



www.morespacestorage.co.uk

Call 01480 830130

Compass Café

"Encompasses the community"

All are welcome on Thursdays
 10:30am until 12 noon
 At Bethel Baptist Church



Our cakes are homemade,
 our coffee and sugar are Fairtrade,
 our tea bags are plastic free.



Priced to be affordable:

Tea/coffee/hot chocolate £1 per mug
 and Cakes £1.50 per large slice
 Squash is free

Please use the side door to enter, the far side door has a ramp for wheelchair users and pushchairs, and there is a carpet and toys for pre-school age customers.

Compass Café is run as a community event, a place to meet and chat. Your hosts are a group from one of:
 Bethel Baptist Church, Girlguiding Units in Swavesey, Swavesey Primary School PTA, St Andrew's Church and Swavesey Women's Institute.

When there is a 5th Thursday in the month other groups are invited to run the café to fundraise. Please get in touch with Sue Ellington if you would like to know more.
sue.ellington@virgin.net or phone 01954 202923

Future 5th Thursday dates:

All the 5th Thursdays in 2025 are now booked.

The Old Granary - Westwick (near Oakington)

The property comprises a ground floor open plan office suite within an attractive converted granary. The office benefits from gas fired central heating, ample car parking, bicycle parking, kitchen, WC and showering facilities.



The village of Westwick (near Oakington) is situated approximately 3 miles to the northwest of Cambridge and only 2 miles from the A14 and M11. The Guided Busway, connecting Huntingdon, St Ives and Cambridge, is approximately 150 metres away.

Mains electricity, gas and water are available to the premises.



For more information please contact us:
 01223 644210
Rebecca.Haylett@OpenArch.co.uk
www.openarch.co.uk



Vets for Pets Bar Hill

Room for plenty more paws!

Your locally owned vets on Viking Way, Bar Hill

Cats

Find out more about us

Celebrating almost one year on the block!

Phone: 01223 243535
 whatsapp: 07360 493 944
 Email: barhill@vetsforpets.com

Shh...If you quote "Swavesey meridian" you could get £30 off our Complete Care plans

Bourn Windmill

15TH CENTURY BOURN WINDMILL OPEN AFTERNOONS AUGUST 17TH & SEPTEMBER 14TH

A rare opportunity to see inside one of the oldest windmills in the UK, and have a go at pushing the windmill round on its post and riding in it when it is being pushed around! It's a fantastic day out for all ages, families and friends! The mill is open from 2pm, with last tours at 4pm. There is also a replica of the mill to see, restored by Cambourne Men's Shed, which was featured in a recent ITV Anglia broadcast and on the BBC website.

Experience hands-on corn grinding with a quern and the guides will take you around the mill talking about its unique history, showing you its machinery, graffiti marks and so much more! Refreshments are available with homemade cakes, teas and coffee or cordials.

Entry £4 adults, Children £1 (under 5s go free). CPPF members are free.

Sat Nav directions and free parking in front field:

Mill Cottage, Caxton Road, Bourn, Cambridgeshire CB23 2SU

Website: <https://cambridgeppf.org/bourn-windmill/>

FLOOR COVERINGS

Cambridgeshire's largest flooring showroom est. 1996

Luxury Vinyl Tiles (LVT)
Laminate - Hardwood & Natural
Over 3500 Carpet samples
Cushion Vinyl

FREE no obligation quotes.
Fitted by fully employed craftsmen with over
100 years experience.

01223 233233

www.floor-coverings.net

Showroom:

Unit 31-32 Dry Drayton Industries, Scotland Road,
Dry Drayton, Cambridge CB23 8AT

Open: Mon - Sat 9-5



Scan to see our showroom



PEST PROBLEM?

Family firm
since 1974

LOCAL QUALITY SERVICE

pest control/prevention/
emergencies/contracts/quotations/
birds/rodents/insects/more...

t: 01954 230708

m: 07789 502556

w: www.drepestcontrol.co.uk

e: info@drepestcontrol.co.uk



19, WALLMANS LANE
CAMBRIDGE
CB24 4QY

SWAVESEY LIBRARY

is your local voluntary run community library.

Swavesey library moved to a new location within Swavesey Village College in January this year. Since then, we have slowly been developing our plans for this new space. We hope that by the time you read this article we will have installed a wonderful new children's corner with bright modern shelving, kinder boxes, new seating and loads more books.

Are your children taking part in this year's summer reading challenge "The Garden Story". If not, then you still have until mid-September to join and complete the challenge. Loads of books to read, lots of online activities, quizzes and suggestions on books to read. Don't wait, come along to Swavesey Library today and join the thousands of children who take part in these wonderful reading challenges each year.

Both good reasons to pop along to Swavesey Library and immerse yourself in the wonderful world of books.

We are open: -
Tuesday afternoons 3.30pm -5.30pm,
Wednesday evenings 5pm – 7pm and
Saturday mornings 10 – 12 noon.

The entrance into Swavesey Library is on the righthand side of the Gibraltar Lane car park. Just follow the library signs into the college and along the corridor past the new college kitchen to our new location.
The old Stage area within the old hall

For further information; - see our web site:-

<http://www.swavesey.org.uk/community/swavesey-your-library/>

Facebook at Swavesey Village Life or contact

Richard at Richard94hart@gmail.com / 01954 202707 or

Doug at Doughuntuk@yahoo.co.uk / 01954 232478.

Doctors Surgeries

Swavesey Surgery

(01954) 230202
Out of hours 111

Website:- www.swaveseyurgery.nhs.uk
Information & updates on facebook page

Over Surgery

(01954) 231550
Out of hours 111

Website:- www.oversurgery.nhs.uk
Information & updates on facebook page

Longstanton

(01954) 207600
Out of hours 111

Website:-www.willinghammedicalpractice.nhs.uk

See our website at www.swaveseymeridian.org.uk
for the full and latest surgery newsletters. Ed

Bar Hill Surgery

(01954) 780442

Out of hours (01954) 780442 -
call will automatically be diverted
Website:- www.maplebarhill.co.uk

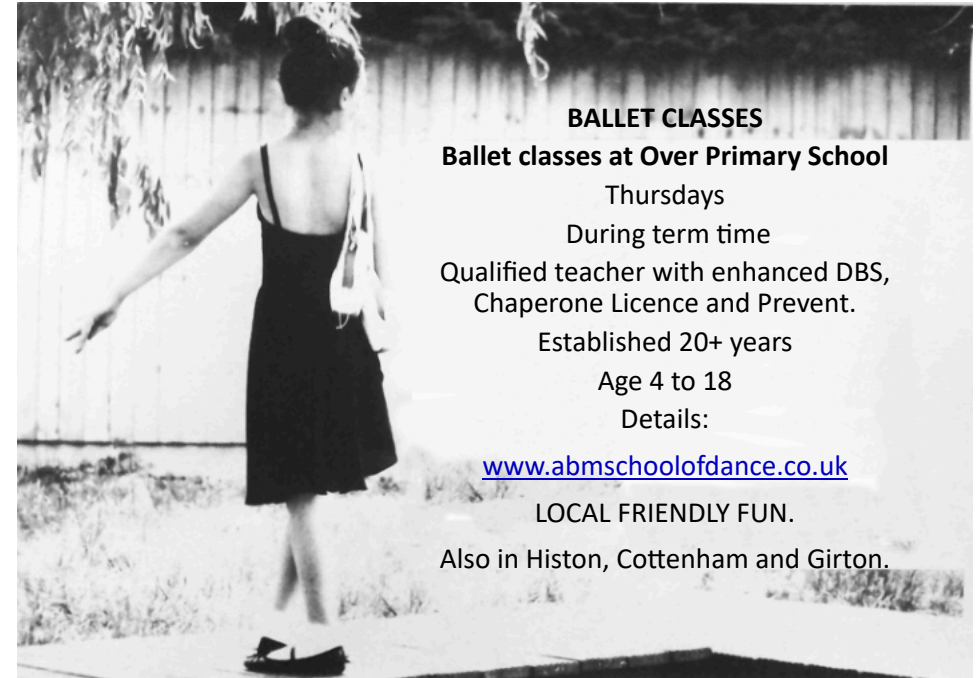
Fenstanton

7E High Street, Fenstanton
01480 461873

Out of hours 111

Website:- www.riverportmedicalpractice.nhs.uk/location/fenstanton/

SCHOOLS INFORMATION



BALLET CLASSES

Ballet classes at Over Primary School

Thursdays

During term time

Qualified teacher with enhanced DBS,
Chaperone Licence and Prevent.

Established 20+ years

Age 4 to 18

Details:

www.abmschoolofdance.co.uk

LOCAL FRIENDLY FUN.

Also in Histon, Cottenham and Girton.

Would You or Someone You Know Benefit From Wellbeing Support?



Care Network Cambridgeshire's **Wellbeing Service** offers **free, short-term support** for adults (18+) in South Cambs who may be struggling with confidence, isolation, illness, or low mood.

Our friendly team can provide **one-to-one support** and match individuals with **trained volunteers** who can offer companionship through phone calls or accompanying them to access the community. Support is tailored over **6-8 sessions**, helping people regain independence and feel more connected.

If you or someone you know could benefit, making a referral is easy — just visit care-network.org.uk/wellbeing or contact us at wellbeing@care-network.org.uk or 0330 0945750

Answers to Selwyn's "Pop Groups Over the Decades" on page18

Society for those enjoying highbrow arts	7, 4	Culture Club
Hospital workers in East Yorkshire town	3, 8, 7	The Beverley Sisters
Sounds like largest primates	8	Gorillaz
Profession often referred to as "Fuzz"	3, 6	The Police
Almost enchanted	1, 7	B*Witched
Sauces often used at Christmas	3, 11	The Cranberries
Unlikely to find these apes in cold region	6, 7	Arctic Monkeys
Are his athletes out when clock strikes 12	5, 8, 7	Dexy's Midnight Runners
Keep watch on winter's white stuff	4, 6	Snow Patrol
Sounds like Good Life character with heart stimulators	5, 3, 3, 10	Gerry and the Pacemakers



Rainbows, Brownies, Guides and Rangers.

Volunteers Needed

Volunteer for Girlguiding and share everything that's awesome about you with the women of the future.

No matter how much time you have to give, there's an opportunity for someone who's as brilliant as you.



Who can volunteer?

Anyone! There's no requirement to have been involved in guiding before, and we've got lots of opportunities for young people too.



How can I help?

Whatever your skills and interests, whether it's volunteering with girls directly or supporting behind the scenes, there's a role to suit you.



What do we do?

We offer a safe, girl-only space in which girls can build confidence, learn new skills and discover who they want to be. We've got an action-packed programme with an offer for every girl, Rainbows (4-7), Brownies (7-10), Guides (10-14) or Rangers (14-18), and we work to be truly girl-led in everything we do.


"Volunteering is just about believing in yourself, being the best you can be. Being a leader has shown me more and more of that every day."

Emma, Queen's Guide and assistant Rainbow Leader

girlguiding.org.uk/volunteer

email caroline@overroad.co.uk if you would like to know more


Please sign your daughters up early for Rainbows here: girlguiding.org.uk/joinus
Don't wait until she is 5 and her friends have started! We are full with a waiting list.



INDUSTRY LEADING CAR DETAILING

MOBILE SERVICES BASED IN CAMBRIDGESHIRE

Experience a professional service from a highly trained team of car enthusiasts. We are the industry leading choice for detailing services in the Cambridgeshire area.



Our Services

- ✓ Maintenance Details
- ✓ Luxury Details
- ✓ Exterior & Interior Protection
- ✓ Ceramic Coating
- ✓ Swirl and Scratch Removal
- ✓ Staged Polishing
- ✓ Gloss Restoration
- ✓ New Car Protection

Contact us today

07307 367570

07307 367570



detailedauto.co.uk

info@detailedauto.co.uk

Swavesey Primary School Early Years and Playwork Centre

Wraparound Care and Early Years Provision - Mon to Fri - term-time

Registration Fee £15 per family for using Breakfast and/or After School Club

Breakfast Club 7.30 am - 8.55 am

3+ year olds to Year 6 children: £6 per child per session

After School Club 3.15 pm to 6.00 pm

For Reception to Year 6 children: £12 per child, family rate £11 per child

Early Years 9.00 am to 3.00 pm (full day) or morning (9-12/1) or afternoon (12-3)

For 2½ year olds to 4 year olds

Places for funded children up to 30 hours per week

Charged sessions:-

3+ year olds £15 half-day and £30 full-day.

2 years and 6 months £17 am only

£5 for lunch hour (12-1)

For more information and to register:-

www.swavesey.cambs.sch.uk (Select EY & P)

PARISH & COUNTY NEWS

From Your DC Sue Ellington

Hello Swavesey residents

I am amazed that we have reached mid summer - days seem to rush by. But the beautiful weather we have had recently reminds me that we have a real scarcity of water in this part of the country and the recent demand to increase housing provision has only led to more concern. The Authorities have recently produced a plan to address water scarcity including advice in relation to reduction of use, more rain water retention schemes, both domestic and industrial, and the longer term building of more reservoirs. If anybody is particularly interested I can let them have a copy.

The draft proposals for the introduction of change to the County and District Authorities into Unitary Authorities are gradually being formed. By the time you read this you will have been asked to vote for the initial two Authority structure - Cambridge and Peterborough. The District configuration being divided between the two. The next interesting issue will be how the various responsibilities will be delegated to Towns and Parish councils. The changes will be fully implemented over two years. I will be particularly interested in how the approval of Grants will be managed but as it is not a statutory responsibility this may not be one of the first decisions to be made.

The four Day week project currently being run by South Cambs District Council which enables staff to work for four days but receive a salary for Five days continues. It is due to be considered by a special scrutiny meeting which will be followed by an agenda item at the next full council meeting which will decide whether it will become a permanent arrangement.

So enjoy the weather, contact me if I can help with any problem - just phone me 07774146331 - I do not use my house phone any longer - email cllr.Ellington@scambs.gov.uk

Best wishes

Sue Ellington

Swavesey Ward South Cambs District Council



9.30 am – 10.15 am
Music Theory classes for ALL

10.15 am – 11.00 am
Little Rockets for 3-9 yrs
Join the Band & Find your voice!

11:00 am – 12:00 pm
The BIG Rock School for
Drummers, vocalists or guitarists
with some experience or have
been playing for some time aged
10 yrs+

10.15 am – 11:00 am
The BIG Sing!
(aka Choir/Sing up – 7 – 77yrs! ALL AGES)

11am – 12pm
The BIG Orchestra!
An opportunity for children,
parents, adults & community in
an orchestra together.
Everyone welcome... beginners
to experienced players!

Swavesey Music School

admin@swaveseymusic.co.uk
Swavesey Village College CB24 4RS

SWAVESEY PARISH

Parish Council News May/June 2025

Parish Councillor Vacancy

Following a notice of co-option one sole application was received from Ms Lisa Boyes who, though a person of several years experience, had to stand down some 4 years ago. Lisa was accordingly welcomed back to the council.

County Council Business

Our newly elected County Councillor Chris Poulton has attended recent Parish Council meetings and has also had meetings with our local highways team who at the time of writing have yet to appoint a highways team officer for our area.

Council leaders have announced that they have identified 3 preferred options for creating new unitary councils across Cambridgeshire and Peterborough. This is in response to the national government requirement to replace the current district, county and city councils with simpler unitary councils. How this will affect the PC is unknown, but the PC will continue to monitor the situation.

The PC continues to press for the repair of our village roads.

Traffic Calming Projects

- The PC held an event at the Memorial Hall in June to allow residents to view the latest 20mph proposal. At the same time the design of the proposed traffic calming was available to be viewed. There will be further discussions with the highways department to finalise the plans.
- Speedwatch – After the completion of training the team have commenced a programme of spot checks around the village. Any additional volunteers are always welcome.

The PC has met with the new County Councillor to discuss all the outstanding issues we have, in particular the Guided Bus car park. We have asked that the road planings located at one end of the car park be spread.

Parking

Once again can we ask all motorists to be considerate where they park their vehicles, particularly in the centre of the village so that driveways and the carriageways are not blocked. It is important that wheelchairs, buggies and emergency service vehicles can get through at all times. The Civil Protection Enforcement Wardens continue to visit the village.

Drainage

As always drainage has been a point of discussion by the PC and the PC is monitoring any progress with the repair of the Brownhill and St Ives staunches by the Environment Agency (EA). The PC have joined the Cambridgeshire Community Flood Group and will attend each meeting or arrange for a local representative to attend.

New T1 Bus Service

Swavesey has benefited from the introduction of the T1 bus service which provides a fast service between Drummer Street and Huntingdon using the Guided Busway and stopping at all bus stops through the village.

COUNCIL NEWS

Village Maintenance & Projects

Many thanks to the Swavesey Litter Pickers who continue to do a sterling job, please remember that there are many litter bins around the village for your use, so please use them.

As part of the development of the new community sports field the PC visited the new Haddenham Sport field to see how their PC approached the development of the site. The visit was very informative especially as the site is of a similar size to ours.

City Fibre continue to work through our village to lay Full Fibre Broadband, the PC will monitor the work ensuring that any disruption to the verges and paths is made good when the work is completed.

The repair of the Moat Way play area should be completed by the time you read this. However, it should be noted that the repairs are very expensive so moving forward please report any damage you see to the PC without delay.

Further details on everything that is discussed at the Parish Council meetings can be found in the Minutes or on the Council's website at www.swavesey-pc.gov.uk

Swavesey Parish Council Website: swavesey-pc.gov.uk

Parish Councillors	Telephone (01954)	E-mail address
Doug Hunt (Chairman)	232478	dhunt@swavesey-pc.gov.uk
Colin Parsons (Vice-Chair)	610357	cparsons@swavesey-pc.gov.uk
Lisa Boyes	07747 002296	lboyes@swavesey-pc.gov.uk
James Dodson	230560	jdodson@swavesey-pc.gov.uk
Martin Johnston	200605	mjohnston@swavesey-pc.gov.uk
Warren Wright	203172	wwright@swavesey-pc.gov.uk
Jonathan Kerley	231304	jkerley@swavesey-pc.gov.uk
Rachel Vollerthun	07312 102526	rvollerthun@swavesey-pc.gov.uk
Sue Ellington	202923 / 07774 146331	sellington@swavesey-pc.gov.uk
Sue Rogers	0777 224 7673	srogers@swavesey-pc.gov.uk
Mandy Smith	07909 798968	msmith@swavesey-pc.gov.uk
Clerk: Linda Miller	202982 / 07458 302193	clerk@swavesey-pc.gov.uk
District Councillor: Sue Ellington	202923 / 07774 146331	cllr.ellington@scambsgov.uk
County Councillor: Chris Poulton Papworth & Swavesey Ward		Chris.Poulton@cambridgeshire.gov.uk https://www.cambridgeshire.gov.uk/council/county-councillors
Memorial Hall Administrator: Nicole Mullee	07963 861791	memorialhall@swavesey.org.uk

Swavesey Parish Council meets on the 2nd Thursday of each month for Planning items and on the 4th Monday of each month for Full Council.

All meetings are held in the Memorial Hall at 7.30pm. There is always a 10 minute public forum at the start of the meeting.



St Andrew's Church

Services at St Andrew's

Please join us for worship at 11am on any Sunday morning. At 8pm on the first Thursday of every month, we have fifteen minutes of silence and prayer followed by Compline remembering the people of Ukraine and other countries affected by war.

You can find information about all our services and events on Facebook and online at A Church near You: <https://www.achurchnearyou.com/church/2834/service-and-events/events-all/>



A message from our new Team Rector



Hello I'm Stephen, the new priest at St Andrew's Church. A little bit about me: I love running, reading and live music. I recently saw Beyonce on her Cowboy Carter tour which was a truly amazing evening! I'm really enjoying getting to know St Andrew's and the community of Swavesey. I look forward to hopefully meeting more people who live, work and play here in the coming weeks and months.

Ministry Team:

Rev'd Stephen Dove (Team Rector): stephen@5folds.org.uk
Canon Jan Payne (Licensed Lay Minister): jan.payne@northstowe.church
Colin Smith (Benefice Administrator): 01954 203459 admin@5folds.org.uk
(Colin works Tuesday to Friday 9.30 am to noon)
Churchwardens Jacqui Fuller: 01954 230774 and Bridget Lofts: 01954 231068

Diddy Disciples Sunday School

This is our new Sunday School for younger children. We sing songs, draw and make things and most of all, learn about Jesus. We meet every Sunday at the back of church. Do join us.



St Andrew's Church



Emmaus House Group

We are a small group of people who meet every other Wednesday morning on Zoom to learn more about God through studying the Bible. We choose our own subjects and ask lots of questions but don't always find the answers! More details from Nicky Carne: nicky_carne@hotmail.com or the churchwardens.



Craft Group

Our group meets every other Wednesday to work together on group activities; have you seen our decorations on the carpark cross? You can bring your own craft activity to work on or just come to enjoy the company over a hot drink and cake. Details from Jacqui Fuller: jacqui_fuller@hotmail.com



Meet us at Swavesey's Community Café - Compass Café every third Thursday of the month, 10:30am - 12 noon. Enjoy our wonderful cakes and coffee.

Events at St Andrew's

Thank you for your support at all of our events so far this year; we hope that you have enjoyed them. Keep an eye on social media for news of new events.



Our new Benefice Team Vicar

We are delighted to welcome The Rev'd Edward (Ed) Green as our new 5Folds Team Vicar from September 16th. Ed has a background in teaching prior to his training for ministry and is currently Assistant Curate at Little St Mary's Church in Cambridge. Ed is married to Katie and they have a young daughter born in 2024.

SACRED HEART RC PARISH HALL

AVAILABLE FOR HIRE

Sacred Heart St Ives
19 Needingworth Rd, St. Ives,
Cambridgeshire, PE27 5JT

Suitable for Community Groups,
Conferences & Meetings,
Coffee mornings, Classes & Parties.

Our parish hall is now available to rent
at £20 an hour An additional fee of £25
will be applied for use of the kitchen.
Guest WiFi available

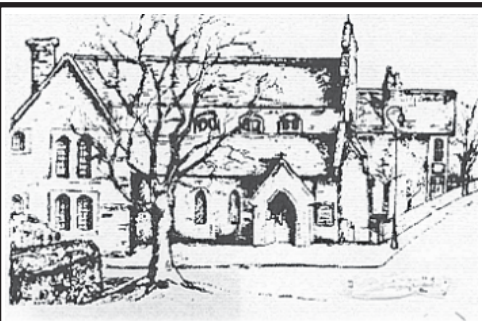
Please enquiry on tel.:
(+44) 1480 462 192

e- mail:

office@sacredheart-stives.org.uk

Website:

www.sacredheart-stives.org.uk/the-church-hall



**SACRED HEART OF JESUS
Roman-Catholic Parish**

19 Needingworth Road, St Ives, Cambs. PE27 5JT

Priest in Charge: Fr Trindade J Monteiro

Tel: 01480 462 192

www.sacredheart-stives.org.uk

email: office@sacredheart-stives.org.uk

Mass Times:

Saturday 17.00 (Anticipatory)

Sunday 09.00 and 11.00

Paying too much for your glasses?

Save Money - Buy Direct!

Visit our factory shop to see our fabulous
range of Discount Prescription Eyewear

- Hundreds of frames to choose from, including designer frames from Ray-Ban, Polo Ralph Lauren, Oakley, PRADA, Ted Baker and Versace
- Specialists in high and complex prescriptions
- Same-day or next-day service available*
- Save up to 75%
- Huge range of designer sunglasses
- Full range of sports eyewear

Official stockists

*subject to prescription and availability



We are open 9am to 5pm Monday to Friday, and 9am to 1pm Saturday



ALL EYES
SPECTACLE MAKERS
SINCE 1937

Call us

01954 231545

Visit our website

www.all-eyes.co.uk

20 Norman Way Industrial Park, Over, Cambridge CB24 5QE

HOCKEYS

ESTABLISHED 1885

**Thinking of a move? We are happy to offer you a free,
no obligation valuation of your property.**



Call our Cambridge office for a free valuation
(01223) 356054



Call our Willingham office for a free valuation
(01954) 260940



HEMINGFORD ARB

PROFESSIONAL TREE SURGEON

- ⊕ Felling/sectional felling
- ⊕ Crown reduction/thinning
- ⊕ Pollarding
- ⊕ Shaping
- ⊕ Hedge trimming
- ⊕ Stump grinding
- ⊕ Firewood for sale
- ⊕ Free quotation

All aspects of garden and tree work covered.
NPTC Qualified. Fully insured.

Tel: 01480 463674

Mob: 07876 521605

Email: hemingfordarb2016@gmail.com



HEMINGFORD
ARB





Club Vintage - Wednesdays 2-4pm

A warm welcome awaits older people and the club is dementia-friendly. There is a small £3 weekly charge. Enjoy a rotating variety of activities such as chair-based exercise, singing, bible-based crafts, quizzes, games and entertainment from others.



Compass Café - Thursdays 10:30am-12pm



You will receive a very warm welcome at our community run cafe. Enjoy reasonably priced coffee, tea and homemade cakes.

LITTLE LIGHTS - Fridays 10am-12pm

Baby & toddler group. All are welcome, bumps, babies, toddlers, parents and carers. Drop in at anytime for as long as you need. Only £2 per family, including drinks & snacks for all! We hope you can come along and join us!



The Hub - Youth Group - Fridays 7-9pm

Open to all year 6 and secondary aged children. Come along and meet up with friends, chat, play games, listen to music and much more! Snack bar also available. £1 entry fee. Parents must complete a permission form.

Craft & Chat - 1st Saturday of every month 10am-12pm

Bring along your craft and share a cuppa! Whatever it is you are working on, (whether knitting or cross stitch, painting or scrap booking) come and enjoy a relaxed Saturday morning with other crafters.



Sunday Services - Sundays 10:45am

You are warmly invited to join us for our weekly services followed by coffee in our compass room. Our services are open to all and are family friendly with children's Sunday School groups for all ages! Every first Sunday of the month is our alternative all age, café-style service which include refreshments around tables, conversation and maybe even some crafts! We have a special Communion service once a month on the 3rd Sunday. At Bethel we are brought together by our Faith, but what truly makes us family is our passion to serve God and love one another through every season.



Curious about faith?

Then Alpha may be for you and it's coming to Swavesey this autumn!

Join a series of group conversations that freely explore the basics of the Christian faith in an open, friendly environment. At each Alpha session, after a meal together you'll watch a video which unpacks the basics of the Christian faith in an engaging way, each one looking at a different question of faith. Then in a small group, you'll have a chance to share your thoughts and hear what others think. You can say anything you like, or nothing at all.

Everyone's welcome; you're invited, no matter your background or beliefs. There's no charge and no pressure to come back. Our team can't wait to welcome you. Whatever age or stage of life you are, we would love you to join us.

Alpha will be hosted at Bethel Baptist Church, 111 Middlewatch, Swavesey CB24 4RP, on Tuesday evenings at 7pm starting on October 7th.

Book your place now by

- scanning the QR code
- calling 07863 299545
- emailing karen.smith@bethelbaptistchurch.org.uk



Save the Date! Swavesey Village Carols are returning to Market Street on Saturday 13th December 2025. Look out for more details nearer the time!

CONTACT US

Pastor Bob - pastorbob@bethelbaptistchurch.org.uk

Sue Hope (Secretary) - secretary@bethelbaptistchurch.org.uk

Charlotte Holmár (Administrator) - admin@bethelbaptistchurch.org.uk

www.bethelbaptistchurch.org.uk

www.facebook.co.uk/SwaveseyBethel

Visit our truly stunning display gardens ...



Probably the largest display centre in the UK, selling directly to trade and the general public

Bannold are one of the UK's largest independent suppliers of natural hard landscaping materials. We stock natural products sourced directly from the UK and around the world enabling Bannold to offer premium products at the most competitive rates to trade and the general public.

- Natural Paving • Setts and Paviours • Stone Walling
- Decorative Gravels • Rockery • Boulders • Waterfeatures
- Topsoils • Soil Improvers • Bark Mulches • Sands
- Hardcores and Cements



Capability Barns
Huntingdon Road
Fen Drayton
Cambridge CB24 4SD

Freephone: 0500 012231
or 01954 231666

Opening Times:
Mon-Fri 07.30 till 5.00
Saturdays 09.00 till 1.00

www.bannold.co.uk



Community Groups & Charities

Swavesey Sustainability Hub	The Sustainability Hub is a community group that offers space and support for people to realise their ideas for a more sustainable way of life. Contact: rvollerthun@gmail.com Website: www.thesustainabilityhub.biz
Sheddit!	Sheddit! is the community shed for Swavesey and surrounding areas. The group works on a range of projects and welcome new members who enjoy making things from wood and metal. Contact: Phil Cohen 07957 422292 Website: https://shareborrowconnect.org/
Cam Sight	Cam Sight is a local charity which offers support to anyone with a visual impairment, along with their family and carers. We meet on the 4th Wednesday afternoon of each month in Bar Hill. For more information please telephone Joan in Bar Hill on 01954 200622 or Alison at Cam Sight on 01223 420033 or email alison@camsight.org.uk . For more info see:- www.camsight.org.uk
Cambridgeshire Hearing Help	CHH is a charity that helps people with hearing loss. Volunteers service NHS hearing aids and provide batteries and they attend Swavesey quarterly at Thistle Green. Advice on any aspects of hearing loss is available at a hearing help session or by calling the office on 01223 416141, E-mail: enquiries@cambridgeshirehearinghelp.org.uk Website: cambridgeshirehearinghelp.org.uk
Care Network	Care Network supports volunteers, encourages independence and develops good neighbour projects. We provide the Welcome Home from Hospital service across Cambridgeshire. Contact:- Care Network, 5 Broadway House, 149-151 St Neots Rd, Hardwick, Cambridge, CB23 7QJ (tel: 01954 211919). Website: care-network.org.uk/
Compass Cafe	Meets every Thursday morning from 10.30 until 12.00 at Bethel Baptist Church. Contact Sue Ellington on 01954 202923 or sue.ellington@virgin.net
Dog Lovers of Swavesey	Dog Lovers of Swavesey is a friendly group where anyone with a love for dogs is welcome with or without dog. Meetings are on the Recreation Green organised through the Facebook group at https://www.facebook.com/groups/dogloversofswavesey where we also exchange tips, ask for advice or have a laugh. Resources are gathered at https://dogloversofswavesey.co.uk/ . Contact: Matt at matthewyoung1@btinternet.com or Anita at anita.faul@outlook.com Tel 01954 232791
Swavesey Library	A volunteer run community library based in Swavesey Village College. We are able to providing a full range of library facilities being directly linked to the Cambridgeshire County Council library service. For more info see:- https://www.swavesey-pc.gov.uk/community/swavesey-your-library/
East Anglia's Children's Hospice (EACH)	Put your free time to good use and volunteer at East Anglia's Children's Hospice (EACH) in Milton. Volunteering at a children's hospice doesn't always mean care work and fundraising as there are also tasks such as admin and maintenance of the grounds. Contact:- Clare Bates on 01223 815134, Email: clare.bates@each.org.uk
OWLS Community Car Scheme	Run by DBS checked volunteers the scheme offers a door-to-door service, for medical or some social journeys, to people who are unable to access other forms of transport. Ring 07505 254363 to book a journey, find out more, or to volunteer as a driver Website: https://www.swavesey-pc.gov.uk/community/owls-community-car-scheme/

CLUB INFORMATION

Army Cadets UK	Swavesey Detachment, No 2 (Cromwell) Company, Cambridgeshire Army Cadet Force meets each Tuesday evening at the Swavesey Village College from 7 pm. New recruits are welcomed from ages 12 years (year 8) to 18 years. www.armycadets.com/county/cambridgeshire-acf/																		
Swavesey Five-a-Side Football Club	Currently seeking new members for this long-established club. We play each Wednesday evening from 6:30 to 7:30pm in the new sports hall at Swavesey Village College. Enquiries to Stewart Smith (07803 050234).																		
Swavesey Girlguiding	<table border="1"> <thead> <tr> <th>Unit</th> <th>Evening</th> <th>Contact</th> </tr> </thead> <tbody> <tr> <td>1st Swavesey Rainbows</td> <td>Thursdays</td> <td>caroline@overroad.co.uk</td> </tr> <tr> <td>1st Swavesey Brownies</td> <td>Mondays</td> <td>swaveseybrownies@outlook.com</td> </tr> <tr> <td>2nd Swavesey Brownies</td> <td>Wednesdays</td> <td>secondswaveseybrownies@outlook.com</td> </tr> <tr> <td>1st Swavesey Guides</td> <td>Thursdays</td> <td>swaveseyguides@gmail.com</td> </tr> <tr> <td>1st Swavesey Rangers</td> <td>Thursdays</td> <td>swaveseyrangers@gmail.com</td> </tr> </tbody> </table>	Unit	Evening	Contact	1st Swavesey Rainbows	Thursdays	caroline@overroad.co.uk	1st Swavesey Brownies	Mondays	swaveseybrownies@outlook.com	2nd Swavesey Brownies	Wednesdays	secondswaveseybrownies@outlook.com	1st Swavesey Guides	Thursdays	swaveseyguides@gmail.com	1st Swavesey Rangers	Thursdays	swaveseyrangers@gmail.com
	Unit	Evening	Contact																
	1st Swavesey Rainbows	Thursdays	caroline@overroad.co.uk																
	1st Swavesey Brownies	Mondays	swaveseybrownies@outlook.com																
	2nd Swavesey Brownies	Wednesdays	secondswaveseybrownies@outlook.com																
1st Swavesey Guides	Thursdays	swaveseyguides@gmail.com																	
1st Swavesey Rangers	Thursdays	swaveseyrangers@gmail.com																	
Swavesey Spartans	Swavesey Spartans (swaveseyspartans.co.uk) is a Chartered Standard Football Club affiliated to Cambridgeshire Football Association. The club delivers football for children aged 6 and above. The club helps with the transition to open age football. Colts football ceases at the end of a player's Under 18 season. Open age football for men in Swavesey is available through Swavesey Institute FC (separate entry in this section of the Meridian). Swavesey Spartans FC have an open age football team for ladies playing league games on a Sunday. For more information about Spartans please contact Paul Clarke (swavesey.chairperson@gmail.com) or Mrs Paula Land (swavesey.secretary@gmail.com)																		
1st Swavesey Scout Group	All sections meet at the Scout Hut on the SVC site Beavers Day: Thursday 18:00 to 19:00 Contact: John Pawson - Beaver Leader john.pawson@1stswaveseyscoutgroup.org.uk																		
	Cubs Day: Tuesday 18:15 to 19:30 Contact: Steven Wilson - Cub Leader steven.wilson@1stswaveseyscoutgroup.org.uk																		
	Scouts Day: Wednesday 19:00 to 20:30 Contact : Marian Bentley - Scout Leader Marian.Bentley@1stswaveseyscoutgroup.org.uk For any other enquiries please email info@1stswaveseyscoutgroup.org.uk																		
Swavesey Early Years and Playwork Centre	Swavesey Early Years and Playwork Centre are based in their own purpose-built unit on the primary school site. It comprises Early Years children (aged from 2 years and 6 Months) between 9am and 3pm (formerly Swavesey Pre School) and we provide activities and care for primary school aged children before and after school. Breakfast Club runs from 7.30 am to 9am and After School Club from 3.15pm to 6pm. For information please contact Carol Panther (Early Years and Playwork Manager) by email: eyandp@swavesey.cambs.sch.uk or by phone (01954) 273312 Ext 2 or 07803 812221.																		
Swavesey Community Choir	If you enjoy singing and having fun then come and join Swavesey Community Choir. We meet every Wednesday in term time in Fen Drayton Village Hall, Cootes Lane, Fen Drayton from 7.45pm - 9.30pm. You don't need to be able to read music and no auditions needed, tenor and bass voices particularly welcome. For further details contact Julie Holmes julieholmes78@gmail.com Website: www.swaveseycommunitychoir.co.uk																		

British Tang Soo Do Institute	British Tang Soo Do Institute practices the Korean martial art of Tang Soo Do. Our club training covers self defence techniques and many aspects of fitness including flexibility, coordination, conditioning, balance and discipline helping to promote a healthy lifestyle. For further information please contact Master Jeff Cockram on 07863 345681 or jeff@btsdi.co.uk Or see our website: www.btsdi.com
Swavesey Tang Soo Do Club	Swavesey Tang Soo Do have classes on a Monday, Tuesday and Wednesday. Classes are in the primary school main hall at 6pm. The contact details are Master Louise Morton on 07919 050261 or email enquiries@swaveseytsd.co.uk . The website is www.swaveseytsd.co.uk
Allotments in Swavesey	Down Hale Road towards the windmill and on the right there are 61 plots, mostly 150 sq yds (125 m2) in area, backed up by eight water tanks. Large yields of a wide range of high quality vegetable, fruit and flower crops can be grown successfully. If you are interested in joining the waiting list contact Val Sage Tel (01954) 230853
British Legion	For information contact:- Secretary - Angela Dye. (01954) 277453. email: dyeangela0@gmail.com
Swavesey Badminton Club	Located at the Swavesey Village College Sports Centre. The Club offers a high standard of play at club nights on Tuesdays 7pm to 8pm and on Fridays from 6.30pm to 9.30pm. We play competitive badminton in the Cambridge leagues and run men's, women's and mixed teams. Contact Helen Taylor on (01954) 230997 Email: enquiries@swaveseybadminton.net Website: www.swaveseybadminton.net
Swavesey Billiards and Snooker Club	For information/membership please contact Graeme Waites (01954 230113) Email graham.waites566@btinternet.com
Swavesey Camera Club	At Swavesey Camera Club we are proud to cater for photographers of all standards. For more information visit our website at: www.swaveseycameraclub.co.uk . We meet every Thursday, 7.00 - 9.30pm, Carole Shaw room, SVC. Non-members welcome - £4 charge (first visit free). For further details please ring Simon Shore (01954) 230848
Swavesey Squash Club	Swavesey Squash Club has three international standard squash courts, in our recently refurbished clubhouse, on the Swavesey Village College site. The club has a number of weekly sessions running, suitable for beginners, improvers, and more advanced players. Unlimited use of the facility from £17 a month. A welcoming and active community club with social events and opportunities for competition. Visit our website for more details or contact Ali Loke on 07776 176866/ ali@alilokesquash.com . www.swaveseysquash.com
Swavesey & Over Cycling Club	We meet regularly throughout the year, with rides most weekends and also weekdays on spring and summer evenings. As a Cycling UK affiliated club our goal is to explore a joint passion for cycling in a safe, inclusive and social way. We aim to organise events throughout the year from day & weekend rides in the UK and long weekend trips in Europe. Contact: John Craven Email: socccommittee@gmail.com Facebook: https://bit.ly/3GJkcsZ SOCC or Website: https://swaveseyovercc.wixsite.com/socc

Fireflies Netball Club	Friendly local club, everyone welcome, from back-to-netballers to seasoned players. We have teams playing in CDNL and Fenland Netball leagues. Training is on Tuesdays 7-8:30pm at Northstowe Secondary School. First month is free. £15 per month thereafter. Contact firefliesnetballclub@gmail.com for more information.
Over & Willingham Cricket Club	We have 2 open age (adult) cricket teams in the Cambridgeshire Saturday afternoon league playing 40 over cricket between the start of May and the end of August. If you are interested in joining our club, please get in touch with one of the club officials, come along to one of our training sessions or approach any club member on our matchdays (Saturday's). Contact Jane Reeson if you are interested. email - reesonhcx46k@aol.com ; Telephone 07768 540146; or Facebook - Over and Willingham CC, or Website - overandwillingham.play-cricket.com
Swavesey Music School	Meets every Saturday of term time at Swavesey Village College. For further details see: www.swaveseymusic.co.uk/
Swavesey District Bridleway Association	A liaison group representing local horse riders whose main aim is to protect existing and create safe new horse riding links between all local villages. New members welcome. Regular Newsletter/ Social events calendar. Please contact Sue Rogers (01954) 232758
Swavesey & District History Society	Meet every third Tuesday in the month, 7.30pm, Carole Shaw room, SVC. Contact Carolyn Redmayne, Secretary (01954) 230037
Swavesey Institute Football Club	Swavesey Institute FC have 2 teams in the Cambs County Saturday afternoon leagues. For information about the club or if you are interested in playing open age (adult) football for the village please contact Martin Pickering on 07737 391445
Linedance	Linedance classes held on Wednesday mornings at the Bethel Baptist Church 9-30 to 11-30 am. Beginners always welcome. Contact Deborah Walker (01954) 231382 Email: deborahwalker105@talktalk.net
Swavesey & Over Conservation Society	At the moment we organise interesting walks If you need a lift: Phone: Trevor Grange - 01954 230119 or Pat Miles - (01954) 780485. Guests Are Always Welcome!
Swavesey & Over Tennis Club	Swavesey & Over Tennis Club: Club nights are Mondays and Fridays, 6.30-8.30pm. We welcome new members - further information our website https://swaveseyovertennis.wixsite.com/sotc , or you can email us on SwaveseyOverTennis@gmail.com , or call Steve 07393 825027 or Melanie 07453 523999.
Swavesey RADsOc	Friendly local drama group staging two or three productions a year. New members always welcome. Contact: Nathalie Balzano: nathaliewoodward@hotmail.com Visit our website at www.swaveseyradsoc.org.uk
Swavesey W.I.	We meet every second Monday of the month at 7.30pm in the Memorial Hall. New members are always welcome to enjoy a variety of invited speakers and have a chat and cup of tea/coffee afterwards. For further information contact Margaret Guest tel (01954) 202757
Women's Walking	Women's Walking on Mondays and Fridays at 10:00am. Meet on Market Street green. Walk for approximately one hour on pathways in and around Swavesey. A chance to exercise and chat. - Reasonably robust footwear recommended. All welcome.

THE MERIDIAN ADVERTISER

August/September 2025

Landscaping & Garden Services

Grower & Supplier of Trees, Shrubs & Hedges

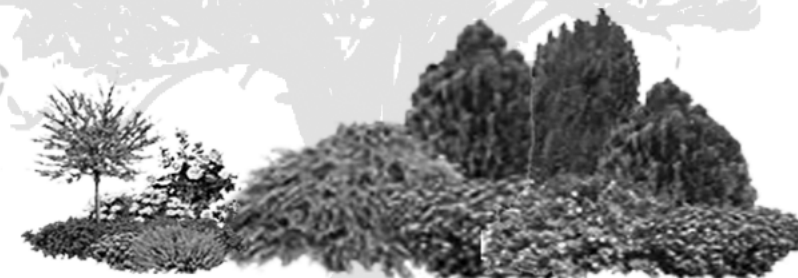


- ✘ Supply and or planting of trees, shrubs and hedges
- ✘ Cutting / Pruning of trees, shrubs and hedges.
- ✘ Land Preparation, spraying, lawn seeding and turfing
- ✘ General maintenance, clearance and repairs
- ✘ Fencing, Gates and Paving

For a FREE estimate phone :- 07786699977

or visit www.eparish-landscaping.co.uk

or Email : edwin@parishnet.co.uk



PAIN AND INJURY CLINIC



Live life pain-free, naturally!
Start your journey back to better health.

WHAT WE TREAT.

- Back Pain
- Neck Pain
- Pelvis and Hip Pain
- Headaches
- Sciatica
- Postural Problems
- Jaw Pain
- Sports Injuries
- Shoulder Injuries
- Pain during Pregnancy
- Muscle Spasms
- Mobility Issues

CHIROPRACTIC CARE | SOFT TISSUE THERAPY | REHABILITATION

www.movefreechiropractic.co.uk info@movefreechiropractic.co.uk

91 High Street, Longstanton, Cambridgeshire, CB24 3BS 07405426244

Made with PosterMyWall.com


Contact for
FREE
to find out if
chiropractic is
right for you.

RPJ SOLUTIONS

PAINTING SOLUTIONS

INTERIOR AND EXTERIOR

CALL TODAY FOR MORE INFORMATION
AND TO ARRANGE A FREE QUOTE!

 RPJ Solutions

Phone: 07794 732097

Email: ryan@rpjsolutions.co.uk

Web: www.rpjsolutions.co.uk

C & C BLINDS

Specialists in Blinds | Any size | Any colour



Vertical Blinds • Roller Blinds
Venetian Blinds • Repairs • Roman • Pleated
Perfect Fit • Wooden • Roof Blinds
Awnings • Fitting Service

Free Estimates & 1 Year Guarantee

10% OFF
With this
leaflet

Tel: 01223 211 171 • Mob: 07761 262070

Email: colincoleman64@hotmail.com

Rothwell's Carpet Cleaning

Carpet, Stone Floor, Upholstery & Rug Cleaning

A few points that make us stand out,

Rothwell's has been in business since 1993

We're an honest local family firm.

Our large truck mounted machines mean
more cleaning & drying power
for the best results possible.

Members of both the NCCA and TACCA.

We will move the furniture.

100% satisfaction or it's FREE.

*Call Oliver and Max Campbell
for expert help today.*

01223 832 928

www.Rothwells.biz

ALEX ARTHURS

BUILDING SERVICES

ALL ASPECTS OF BRICKWORK UNDERTAKEN

EXTENSIONS • TRADITIONAL BRICKWORK • ALTERATIONS
GARDEN WALLS • CHIMNEY REBUILDING • REPOINTING
FIREPLACES • STONE SILLS AND THRESHOLDS

PAVING • SLABS & NATURAL STONE • BLOCK PAVING
CONCRETING • GROUNDWORKS • FENCING • DECKING

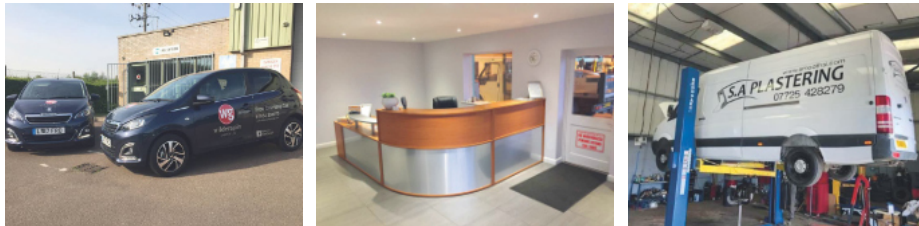
FOR A FREE QUOTATION & ADVICE CALL ALEX ARTHURS

01954 232050 or 07841 433652



wilderspin
GARAGE LTD

A local family-run business



MOTOR HOME SERVICING -
MOT'S & HABITATION CHECKS
ALL DONE ON SITE

SERVICING & REPAIRS

EXHAUSTS | BATTERIES | TYRES | CLUTCHES | BRAKES | TIMING BELTS

M.O.T. TESTING CENTRE

CLASSES 4,5 & 7 | MOTOR HOMES | MINI BUSES
CARS | VANS | LIGHT COMMERCIAL

FREE
USE OF
COURTESY CARS

AIR
CONDITIONING
SERVICING

FREE
COLLECTION AND
DELIVERY SERVICE



OAKTREE ROAD | FEN DRAYTON | CB24 4SS
Tel: 01954 230273 | Email: wilderspingarageltd@gmail.com
www.wilderspin-garage.co.uk



LB ROOFLINE UPGRADES

With over 30
years of
experience

Mobile: 07477775551
Landline: 01223961285
Please check out our website and our checktrade
LBroofline.co.uk

Welcome to LB
roofline
upgrades.

We carry out the following, all Upvc work including, new fascia and soffits, new guttering and dry verge system. Aswell as all general roofing work

Sales: Servicing Salt

AQUASTREAM
Water Softeners limited

- Supply & Installation Service
- Servicing & Repairs
- Drinking Water Systems
- Salt Delivery & Collection

01954 230898

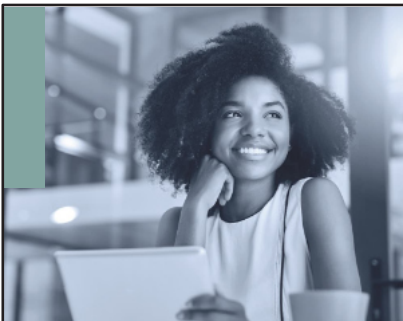


www.aquastream-softeners.co.uk

Unit 17 Meridian, Buckingham Business Park, Anderson Road, Swavesey, Cambridge, CB24 4AE

Authorised
Ecowater & Kinetico
Dealership





Feel confident and in control

Financial advice for the future you imagine.

We're here to help you feel in control of your money. Not the other way around.

Let's start a conversation.

James Tait
BA (Hons) DipPFS
Director

01954 231768
07768 305151
james.tait@sjpp.co.uk
www.taitfinancialservices.co.uk



Tait Financial Services Ltd is an Appointed Representative of and represents only St. James's Place Wealth Management plc (which is authorised and regulated by the Financial Conduct Authority) for the purpose of advising solely on the group's wealth management products and services, more details of which are set out on the group's website www.sjpp.co.uk/products. The 'St. James's Place Partnership' and the titles 'Partner' and 'Partner Practice' are marketing terms used to describe St. James's Place representatives.

SJP Approved 20/11/2024

SJP3559F_DS B2 (10/23)



Andy Tibbett & Sons Painting & Decorating



- * All internal & external work carried out to a high standard
- * Trade references can be supplied
- * Very competitive pricing
- * A prompt & polite service from a name you can trust



Telephone: 01954 230810

Mobile: 07717 493723

Email: andrewtibbett@hotmail.co.uk



Ash Croft Veterinary Surgery

169 St. Neots Road,
Hardwick, Cambridge CB23 7QJ

Mon.–Fri. 8.30am –10.30am

4.30pm–7.00pm

Saturday 9.00am–11.00am

Sunday 10.00am –11.00am

Tel: 01954 210250

Unit 1 Pendrill Court, Ermine Street North
Papworth Everard, Cambridge CB23 3UY

Monday, Wednesday, Friday 11.30am–1.30pm

Saturday 12noon–1.30pm

Tel: 01480 831615

Laura Wood MA, VetMB, MRCVS

Simon Shore MA, VETMB, MRCVS

Dragan Tomovic BVSc, MRCVS

Consultations by appointment only

Swavesey Physio

**Chartered
Physiotherapist**
Susannah Jennings BSc (Hons)
MCSP, HCPC, MAACP



Musculo-Skeletal Injuries:

- Back & Neck Pain
- Muscle & Joint Pain
- Rehabilitation after Surgery
- Postural Conditions (including Post & Ante Natal)
- Mobility Difficulties

Treatments Available:

- Joint Mobilisation & Manipulation
- Soft Tissue Massage and Stretching
- Acupuncture
- Mobility Assessments
- Electrotherapy
- 1:1 Clinical Pilates
- Rehabilitation Programs



31 Thistle Green, Swavesey, Cambridge. CB24 4RJ.
Tel: 07970 548205

Email: susie@swaveseyphysio.co.uk
Web: www.swaveseyphysio.co.uk

G B Builders

NO JOB TOO SMALL

FOR ALL MAINTENANCE RENOVATIONS AND DIY WORK

All general building repairs & odd jobs
Specialist in Painting & Decorating
Groundwork & Grass cutting

- Fencing
- Brickwork & Plastering
- Plumbing
- Driveways, Paths, Patios
- Carpentry
- Slabbing
- Roofing
- Concreting
- Tiling
- Blockpaving
- Drainage
- Guttering

Call Today
07877 742420
Or 01480 437511
g.builders@yahoo.co.uk

La` Mac

Hairdressing for all
the family



- ♦ Friendly Service
- ♦ Traditional & up to date styling
- ♦ Fully trained in all colouring techniques
- ♦ Open Tuesday - Saturday
(late 7.00pm Wednesday)

We aim to make your visit as pleasant as possible, with a professional and friendly atmosphere to help you relax.

If you are thinking of a change please pop in - we will be pleased to help.

☎ 01954 231 445

2a Market Street Swavesey
Cambridgeshire CB24 4QG

F.W. COOK

FUNERAL SERVICE

49 Church Street Willingham

Tel Willingham 260325

Andrew Cook Dip FD Kay Cook Dip FD MBIE

A long established family business providing a personal 24 hour service

Golden Charter pre-payment funeral plans available

COOK'S MEMORIALS

New memorials and refurbishments
Brochures available on request



DDB Home Solutions Limited

Making your house a home

We are a company based in Needingworth specialising in kitchen and bathroom installations and can also supply the following services;

- Carpentry and Joinery
- Plumbing
- Electrical installation – Part P registered
- Floor and wall tiling
- Less-abled Bathrooms and Wet Rooms



We are a member of the Institute of Carpenters and also the Guild of Master Craftsmen with over twenty years experience

Visit our website for more information - www.ddbhomesolutions.co.uk
For an informal discussion or quote please contact Darren or Jo Turnbull
Tel: 01480 495984, or email us at Darren@ddbhomesolutions.co.uk



ELECSA



M.B. FLACK

Interior & Exterior
Painter & Decorator
& Repairs

30+ Years Experience
in the trade.

Free Estimates

Telephone
01954 231 915

LIGHT REMOVALS

Small Houses to Single Items

ANY DISTANCE
7 Days a Week

For a Free Quote

Telephone:

01480 352220

07711 556833

www.cambslightremovals.com



Carpet, Upholstery & Fine Rug
Cleaning Service

&

Wood Floor Restoration

Call Today
01223 790796
or scan QRcode
to message us:



Please quote:
Swavesey Meridian Mag

*"We were very satisfied with the technician
and the way the carpets were cleaned. He
was very polite and phoned to say he was
coming and again later to let us know he
would be with us shortly. Thank you for
your services."*

Mrs Burling



Art of Clean, Denny Lodge Business Park, Ely
Road, CB25 9PH
www.artofclean.co.uk

R.A. Denton

Painting & Decorating

High Quality



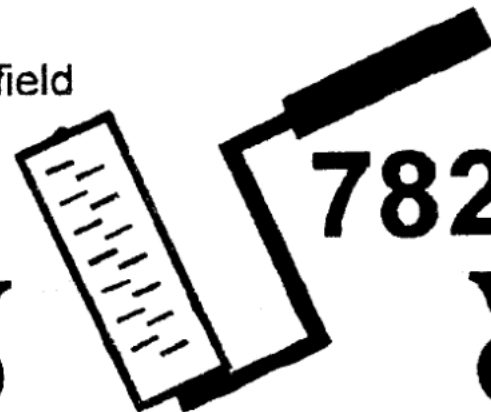
Industrial

Commercial

Domestic



102, Stonefield
Bar Hill
Cambridge
CB3 8TB



782472



Struggling with Long Covid?
 Living with chronic pain?
 Can't get a good night's sleep?



Five Element Acupuncture

- diagnoses the root cause
- calms your nervous system
- relaxes tense muscles
- rebalances your body
- nourishes mind and spirit

Discover how working on your health with a fully qualified Five Element acupuncturist can transform your outlook.

Phone or email today for your FREE 20-minute consultation with Willingham acupuncturist Kaye Rooney
 Lic. Ac., B.A Hons. MBAcC
 kaye@kr-acupuncture.com
 07593 058748



Find out more at
kr-acupuncture.com

Contact us:
david@rosegatefarm.co.uk
 07922 588171



Rose and Crown Road Road, Swavesey

Butchery Open Fridays (8.30 am - 5.30 pm) & Saturdays (8.30 am - 1.30 pm)

www.rosegatefarm.co.uk

Bespoke Butchery – butchered to suit your requirements

BEEF
 - Primarily from our own Hereford / Angus herd
 - All at least 21-day aged

LAMB
 - Swavesey born and bred
 - individual cuts, or ¼, ½ or whole lamb packs available

PORK
 - Bred & reared here at Rosegate Farm.
 - Home-made sausages, dry-cured bacon and gammons (smoked and unsmoked)
 - Cooked Ham

CHICKEN (sourced from Diaper Poultry)
 - Sutton Hoo Free Range
 - St George Chicken

BBQ Meats – Burgers – Kebabs – Glazes

See you in the butchery!





Garolla garage doors are expertly made to measure in our own UK factories, they're strong and solidly built. The electric Garolla door rolls up vertically, taking up only 8 inches inside your garage, maximising valuable space. Our experienced installers will fit your new door and they'll take away the old one too, so there's no mess.

Give us a call today and we'll come and measure up **FREE** of charge.

GAROLLA
 ROLLER SHUTTER DOORS

www.garolla.co.uk

CALL US TODAY ON:
01954 750 018
 MOBILE:
07537 149 128

LINES OPEN 7 DAYS A WEEK

CE APPROVED

Now only
£895*
 for a fully fitted electric garage door.

WAS £1354 INCLUDING VAT.

Gotta get a Garolla.

4.8 out of 5! Over 2,800 reviews

*Offer valid for openings up to 2.6m wide & including 2 remote controls, 55mm white slats, internal manual override.

YOUR COMPLETE

GAS, HEATING AND PLUMBING COMPANY

- PLUMBING
- HEATING
- GAS
- BATHROOMS
- WATER SOFTENERS
- PROPERTY MAINTENANCE

Keeping you gas safe and leak free

01954 204044
entiregroup.co.uk
service@entiregroup.co.uk

A distributor for Harvey Mini max water softener

Vaillant approved installers

AJ Carpentry



Local, family run business who thrive on transforming project dreams into a stunning reality!

Extensions – Conversions – New Builds – Groundworks – Bathrooms

Kitchens – Flooring – Electrical works – the list is endless!

www.ajcarpentry.co.uk

07989 341724 / 07812 671495

Stamp Chiropody & Podiatry

Casey Stamp MCPod BSc (Hons)

HCPC registered CH15068



- General chiropody - nails, hard skin & corns
- Diabetic foot care
- Children's Feet - Growing pains, Verrucas, etc.
- Sporty Feet & associated injuries + pains
- Ingrowing toe nails
- Custom made Orthotics/insoles
- Dancing feet - we'll keep you on your toes
- Biomechanics & Gait analysis

New Clients Always Welcome

Find us at:

1E Highgate Farm,
Over Rd, Willingham,
CB24 5EU

Tel: 07807 505534

www.stamppodiatry.co.uk

Accountancy & Taxation Services



Tax Returns
Business Accounts
Bookkeeping
VAT Returns
Payroll
Audits

L.A. Wells FCCA CTA

Chartered Certified Accountant, Chartered Tax Advisor

4 Scoreney
Fenstanton
Huntingdon
Cambridgeshire
PE28 9QG

Tel: 01480 466 197



www.lwells.co.uk

Vintage travel your own pool

...holidays with added peace of mind.

Your Local
Travel
Company

Handpicked Villas with private pools.
Over 30 years of creating perfect holidays.
Book with confidence.



• Greece • Spain • Lanzarote • Balearics • Portugal • Turkey • France • Italy • Croatia • Cyprus

01954 261 431
www.vintagetravel.co.uk



MAGAZINE ADVERTISING RATES

ADVERTISING RATES AS FROM FEBRUARY 2025
For a one year inclusion i.e. six issues.

Size	Advertiser	Magazine
Full page	£286	£379
Half page	£149	£214
Quarter page	£100	£132

The following rates are for one inclusion only and as a premium rate is already charged will be positioned in the magazine section:-

Half page one inclusion only £100

A small charge may be made for creating and amending artwork

For all advertising details please contact:
April Martin Tel: 01954 200533 or
Email: adverts@swaveseymeridian.org.uk



Plumbing and heating supplies
to the trade and public



We are a local independent company supplying
all your plumbing & heating needs, including:

**Bathroom Taps • Boilers • Bathroom Suites
Underfloor Heating • Central Heating Radiators
Heated Towel Rails • Showers • Kitchen Taps
Sinks • Baths • Sanitaryware
Plastic Plumbing Systems • Fittings**

Do not hesitate to ring, email or visit...

Unit 10, Norman Way Industrial Estate, Over, Cambridge CB24 5QE.
Tel: 01954 230268. E-mail: info@dandtsupplies.co.uk www.dandtsupplies.co.uk

NOTIFICATION OF MAJOR EVENTS

Please use this form to notify us of any major events you are organising so that we can publish the dates in the magazine and on the website at www.swaveseymeridian.org.uk

It is hoped this will avoid major events clashing on the same day. Please send to the Editor, 14 Black Horse Lane, Swavesey.

Event _____

Location _____ Date _____ Time _____

Contact Name _____ Tel No. _____

BIRTHDAYS, ANNIVERSARIES & SPECIAL OCCASIONS

If you would like to mark any occasion that is special to you or somebody that you know by announcing it in this magazine, please fill in the form below.

Also supply your name and contact details, and return to the Editor by the copy date.

We will endeavour to include it in our next issue.

SHORT MESSAGE:

USEFUL TELEPHONE NUMBERS & WEBSITES		
Doctor's Surgery (Swavesey)	01954 230202	swaveseyurgery.nhs.uk/
Doctor's Surgery (Over)	01954 231550	oversurgery.nhs.uk/
Police:		www.cambs.police.uk
Emergency	999	
All Non Emergency Calls	101	
Swavesey Parish Council	01954 202982	www.swavesey-pc.gov.uk
Swavesey Pre-school Enquires	01954 273312 Ext 2	www.swavesey.cambs.sch.uk/page/?title=EY+%26amp%3B+P&pid=59
Swavesey Primary School	01954 273312	www.swavesey.cambs.sch.uk/
Swavesey Village College:	01954 230366	www.swaveseyvc.co.uk
Community Office	01954 234488	www.swaveseyvc.co.uk/community-education/
Swavesey Post Office	01954 232311	
Cambridgeshire County Council:		www.cambridgeshire.gov.uk
General Enquiries	0345 045 5200	
Library Service	0345 045 5225	www.cambridgeshire.gov.uk/residents/libraries-leisure-culture/libraries
South Cambs District Council	01954 713000	www.scambs.gov.uk
Electricity (UK Power Networks):		
Emergency & Power Cut Report Line	0800 783 8838	www.ukpowernetworks.co.uk
Gas Emergencies (National Grid)	0800 111999	www.nationalgas.com/emergency-contacts
Water (Cambridge Water Company) Leak:	0800 316 7676	www.cambridge-water.co.uk
Sewage (Anglia Water) Emergency	03457 145 145	www.anglianwater.co.uk
Environment Agency (Flood Line):	0800 807060	www.environment-agency.gov.uk
Samaritans	116 123	www.samaritans.org
Addenbrooke's Hospital:	01223 245151	www.addenbrookes.org.uk
Hinchingbrooke Hospital	01480 416416	www.hinchingbrooke.nhs.uk
NHS Direct	111	111.nhs.uk
Airports + Road & Rail:		
Local Taxi: Alpha Cars	01954 232300	www.alphacarsonline.co.uk
Gatwick	0844 892 0322	www.gatwickairport.com
Heathrow	0844 335 1801	www.heathrow.com
Luton	01582 405100	www.london-luton.co.uk
Stansted	0808 169 7031	www.stanstedairport.com
Traveline (Bus Coach & Rail)	0871 200 22 33	www.traveline.info
Local Timetables:		
Cambridgeshire Bus Information		www.cambridgeshirebus.info
Stagecoach	01223 433250 0345 241 8000	www.stagecoachbus.com
National Express Coaches	03717 81 81 81	www.nationalexpress.com
Whippet Coaches	01954 230011	www.go-whippet.co.uk
National Rail	03457 48 49 50	www.nationalrail.co.uk
Veterinary Practices:		
Village Vet (Longstanton)	01954 780027	www.villagevet.co.uk
Ash Croft (Hardwick)	01954 210250	www.ashcroftvet.co.uk
Vets For Pets (Bar Hill)	01223 243535	www.vets4pets.com/practices/vets-in-cambridge/vets4pets-cambridge-bar-hill/





FIREFLIES NETBALL CLUB

FRIENDLY CLUB SEEKING NEW PLAYERS

Where: Northstowe Secondary College

When: Every Tue 7.00-8.30pm, year-round

Who: 16+ age, any ability with a grasp of the rules or a keenness to learn

GET IN TOUCH

FirefliesNetballClub@gmail.com

**TRY FIRST
MONTH FREE**

No commitment,
come & have a go!