

# THE MERIDIAN SWAVESEY



**No. 217 December/January 2026**

# Cinderella



*The Panto Written & Directed by S.M Fearon*

*Performed by Swavesey Radsoc*

**TICKETS  
FROM  
£10**



**Swavesey Village College, January 23<sup>rd</sup>, 24<sup>th</sup> and 25<sup>th</sup>**

**Tickets on sale December 1st!**

**[www.swaveseyradsoc.org.uk](http://www.swaveseyradsoc.org.uk)**

**or call 07563334555**



# EDITORIAL

**Note from the editor:**

Hello all,  
 I'm Sammi, your new editor. I've lived in and around Swavesey most of my life, and with my grandparents Cyril and Betty once running The White Horse, it feels very natural to be involved in something that's part of the village's character.

A quick and heartfelt thank you to everyone who contributed to the recent GoFundMe. Your support means the Meridian can continue to land on doorsteps — something that clearly matters to a lot of us.

I'm looking forward to helping the magazine feel rooted in the village we all know... the familiar faces, the small joys, the odd quirks, and the things that make Swavesey feel like home.

| <b>IN THIS ISSUE ...</b>                    |            |
|---|------------|
| Front Cover - by Edwin Parish               |            |
| Inside Front Cover - RADSOC Pantomime       |            |
| Inside Back Cover - Community Warden Poster |            |
| Back Cover - Market St. Carols              |            |
| Red Berries by Edwin Parish                 | page 1     |
| Editorial                                   | page 2     |
| Meridian Committee                          | page 3     |
| Major Events List                           | page 4     |
| Dates for your diary and forthcoming events | page 5     |
| Our Retiring Editor                         | page 6     |
| Club Reports                                | page 7-15  |
| Miscellany                                  | page 16-23 |
| Medical News                                | page 19    |
| School Information                          | page 24-26 |
| Parish and County news                      | page 28-32 |
| Churches                                    | page 33-39 |
| Community Groups & Charities table          | page 40    |
| Club Information                            | page 41-43 |
| Advertiser                                  | Page 44-58 |
| Advert Costs, Major Events & Birthday forms | Page 58-59 |
| Useful Telephone Numbers                    | page 60    |

# MERIDIAN COMMITTEE

|               |  |                   |
|---------------|--|-------------------|
| Editor:       | Sammi Leaver (see editor@ below)   |                   |
| Treasurer     | David Gedny  | Tel: 01954 231305 |
| Production:   | Alan Morris  | Tel: 01954 202664 |
| Advertising:  | (See adverts@ below)   |                   |
| Distribution  | Neil Jordison  | Tel: 01954 204390 |
| Subscriptions | Neil Jordison  | Tel: 01954 204390 |
| Proofreading  | Alison Lucas   | Tel: 01954 232984 |
| Website:      | Alan Morris <a href="http://www.swaveseymeridian.org.uk">www.swaveseymeridian.org.uk</a>       | Tel: 01954 202664 |
| Emails:       | <a href="mailto:editor@swaveseymeridian.org.uk">editor@swaveseymeridian.org.uk</a>             |                   |
|               | <a href="mailto:adverts@swaveseymeridian.org.uk">adverts@swaveseymeridian.org.uk</a>           |                   |
|               | <a href="mailto:webmaster@swaveseymeridian.org.uk">webmaster@swaveseymeridian.org.uk</a>       |                   |
|               | <a href="mailto:complaints@swaveseymeridian.org.uk">complaints@swaveseymeridian.org.uk</a>     |                   |
|               | <a href="mailto:distribution@swaveseymeridian.org.uk">distribution@swaveseymeridian.org.uk</a> |                   |

SUMMIT



# LANDSCAPES

PAVING - DRIVEWAYS - BRICKWORK  
CARPENTRY - GROUNDWORKS





[www.landscapingpaving.co.uk](http://www.landscapingpaving.co.uk)

PHONE: 01223-929394

## Major Events List

This list is intended to avoid major events clashing on the same day. It will only work if we are advised of all such events, so please let us know as soon as you can confirm the details.

A form is available at the back of this magazine. We will list them in this section of the Magazine and also on our website at:- [www.swaveseymeridian.org.uk](http://www.swaveseymeridian.org.uk)

|   |                                |  |
|---|--------------------------------|--|
| Saturday 13 December  | Bethel Baptist                 | Market St Carols from 5 to 7.30pm  |
| Tuesday 16 December   | Age Uk                         | 1.00 - 4.00pm - Swavesey Bethel Church Meet & Greet the Community Wardens                                      |
| Friday 23 January   | St Andrews                     | 7.00 pm: Dr Larry's Quiz Night   |
| Friday 23 January<br>Saturday 24 January<br>Sunday 25 January | RADSOC                         | Cinderella Pantomime - Tickets <a href="http://swaveseyradsoc.org.uk">swaveseyradsoc.org.uk</a> - 07563 334555 |
| Saturday 21 March   | Swavesey Camera Club           | Spring Exhibition 10am - 4pm in Swavesey Memorial Hall - Contact Simon Shore Mob. 07711 485114                 |
| Saturday 16 May   | St Andrews                     | 10:00: Plant Sale in St Andrews Church   |
| Saturday 27 June  | St Andrews                     | 2:00 – 4:00pm: Teddy Bear Zip Wire   |
| Friday 10 July  | The Pantaloons Outdoor Theatre | Sherlock Homes and the Hound of the Baskervilles 7pm at Market st Green -                                      |

### Our Retiring Editor

April Martin has been our Editor for many years and we wish to thank her for all those years of voluntary effort.

With the changes in communications, Facebook, Text Messaging, Email attachments etc, and being a dance teacher, she found it challenging to keep up with the technology.

In the end it was ill health that defeated her and so she had to reluctantly give up the role of Editor.

So April, we wish you a peaceful retirement and many holidays in your Camper Van.

Warm wishes from all the Meridian Committee.

1

# DATES FOR YOUR DIARY

1

| December    |                   |  |
|-------------|-------------------|--|
| Friday 5    | Refuse Collection | Green & Blue Bins  |
| Friday 12   | Refuse Collection | Black Bin Collection   |
| Saturday 13 | Bethel Baptist    | Market St Carols from 5 to 7.30pm  |
| Monday 15   | Parish Council    | Full Council Meeting   |
| Tuesday 16  | Age Uk            | 1.00 - 4.00pm - Swavesey Bethel Church Meet & Greet the Community Wardens                                      |
| Friday 19   | Refuse Collection | Green & Blue Bins  |
| Monday 29   | Refuse Collection | Black Bin Collection (Note Monday)   |
| January     |                   |  |
| Friday 23   | St Andrews        | 7.00 pm: Dr Larry's Quiz Night   |
| Friday 23   | RADSOC            | Cinderella Pantomime - Tickets <a href="http://swaveseyradsoc.org.uk">swaveseyradsoc.org.uk</a> - 07563 334555 |
| Saturday 24 | RADSOC            | Cinderella Pantomime - Tickets <a href="http://swaveseyradsoc.org.uk">swaveseyradsoc.org.uk</a> - 07563 334555 |
| Sunday 25   | RADSOC            | Cinderella Pantomime - Tickets <a href="http://swaveseyradsoc.org.uk">swaveseyradsoc.org.uk</a> - 07563 334555 |

**Note:-** January Bin Collection Dates not available at time of going to print

## ALAN'S CARPETS

### Carpets and Vinyl Supplied and Fitted

We have been in the carpet trade  
for over 47 Years!

Samples To Your Home

Measure

Quote

Express delivery & fitting included

Phone 07790 681317

or

07790 544250

## CHIMNEY SWEEP

### J. L. Wight

City & Guilds Qualified

Advice given /  
Problems solved



Certificates issued

Fully Insured



HETAS registered

**01954 253315**

[www.camsweep.co.uk](http://www.camsweep.co.uk)  
26 Cow Lane, Rampton

## CHIROPODIST/ PODIATRIST

I can offer a professional service

For further details please ring

**01954 201256**

**07494 196065**

Biomechanical assessments &  
orthotic therapy also available.

*Michelle Dolan*

*HCPC Registered Chiropodist/Podiatrist  
CH34864*

*e-mail: michelledolan@outlook.com*

## JASON KIRBY LTD

EXPERT DECORATORS

All Aspects of Internal & External Decorating

Period, Residential & Commercial Properties

Wallpaper & Mural Install

Kitchen Cabinet & Furniture Re-Sprays

Floor Sanding & Restoration

Plastering, Coving & Artex

City & Guilds, NVQ Qualified

For Service, Quality & Reliability



☎ **01954 211775**

🌐 [jasonkirbyltd.co.uk](http://jasonkirbyltd.co.uk)

## CLUB REPORTS

\*\*\*\*\* HAPPY CHRISTMAS WISHES TO ALL \*\*\*\*\*

Always comes as a great surprise to be writing an invitation to our upcoming Christmas do, the President's Evening, when it seems no time whatsoever since we were inviting everyone to join us for our Welcome Night in September. Lots of cliches, time goes fast when you're having fun, or worse, time speeds up as one gets older, let's just ignore that one. BUT here we are again, one external 4-way competition against local rivals, St Neots and St Ives to be hosted at Ely on Wednesday 3rd December, and the internal prestigious Joe Sipos Trophy for Best Colour Print Competition on the very next day, 4th December, back in SVC, (to be judged by Jim Bennet). One interesting talk, but NB, on ZOOM, will be presented by the much exhibited Sarah Howard, entitled 'Capturing Mood and Atmosphere in Landscapes'. Sarah has shown her work widely; locally, in Oxford and Westonburt Arboretum. We have a new President this year, well known to you all, Penny Reeves. Let us see what intriguing games she comes up with, to keep us on our toes. This will all happen on December 18th to get us all in a festive mood, for our seasonal break.

We start again in January on 8th, hosting a friendly competition with St Neots to be judged by Naomi Saul. The following Tuesday, 13th, there will be a zoom advisory night to help us select our entries for our second Set Subject, 'Film Titles'. This will be held at the very end of the month, 29th January. On the 15th we are all asked to 'Talk about Pictures'. We must all bring along photos that we enjoy, our own or taken by others, and discuss them with our colleagues. We have what promises to be a most interesting Members Evening on the 22nd, 'Out of Africa', by our own local Travel Agent, Clare Dudley, then 'Colorado in the Fall' by Penny Reeves, and Audio visual work from Ian Johnson.

Plenty to keep us all busy in the new year. You are always welcome to join us for a small fee.

Mo Hadfield.

Swavesey Camera Club.

The season is well and truly underway, and all of our teams are settling well into their respective leagues.

Inevitably some teams have found the start of the season more of a challenge than others, but all of the coaches are very happy with the passion and commitment on display from our players week in week out, regardless of the score or the weather!

In sad news, despite the very best efforts of the coaches, our U17 boys team folded at the start of the season without playing a competitive game.

Moving from U16 to U17 is a very challenging transition with so many competing life priorities for players of that age. This is mirrored across the county with nearly 60 U16 teams registered last season dropping to just over 30 teams registered at U17 this season. It's the stark reality of the drop off of youth football at that age.

That said, the U17 girls' coaches have done a remarkable job in keeping their team together and it's so rewarding to see them competing so well in their league.

We're delighted to have seen the first few training sessions delivered to our new U6 team. We're always looking for new players to join our club, so please contact our U6 team at:

<https://www.swavesey Spartans.co.uk/contact/?contact=U6%20mixed>

As always, our key emphasis remains offering the young people of Swavesey and surrounding villages a safe and welcoming environment to play football.

Not everyone can win the league or the cup, but everyone can enjoy the beautiful game.

The three 9v9 teams have settled well into their new home at Elsworth and we remain grateful for the partnership we have developed with their sports club committee over the last few years.

Closer to home, the damage caused to the village green by the very dry summer was much worse than first thought and the 11 a side, 7 a side and 5 a side pitches were completely unplayable for all of the early part of the season. This affected four of our teams (U16, U15, U9 and U8) as well as the Swavesey Institute adult men's team, meaning we had to seek alternative locations or reverse all of our early season games, which has been far from ideal.



The Parish Council have invested in remedial works and to date over 40 tonnes of soil has been applied onto the pitch to fill the cracks. Groundsman Michael Church has also overseeded the pitch and undertaken other remedial work to try and get the pitch back to a playable condition.

Print deadlines mean we haven't seen the fruition of that work at time of submission, but the 7 and 5 a side pitches were the most likely to be put back into action first, with the 11 a side hopefully not too far behind.

We must thank Swavesey Village College for their support in allowing us to use the 3G facility as one of the alternative locations for some of our Saturday morning games.

In other news, our Ladies team is really struggling with numbers this season and have had to start some games with less than 11 players, or have had to forfeit games due to lack of available players, which is disappointing for all concerned.

The coaches are so committed to the team, but the sad reality is that if that continues the team may have no option other than to fold, which would be a tragedy.

The team are actively recruiting. They play on Sunday afternoons at 2:00pm and train on Thursday evenings during the winter from 7:30 to 8:30 pm. If you or anyone you know would be interested in joining, please contact the coaches at <https://www.swavesey Spartans.co.uk/contact/?contact=Ladies>

Our U14 boys' team are also short of players. They play 11 a side football on Saturday mornings at Fen Drayton and train on a Wednesday evening during the winter from 6:30 to 7:30pm. The coaches can be contacted at <https://www.swavesey Spartans.co.uk/contact/?contact=U14%20boys>

In addition, we're always looking to encourage more girls to join our club. We're very keen to look at introducing a "Wild cats" team for girls to give football a go in a non competitive environment. For more information on the Wildcats programme, visit:

<https://www.thefa.com/womens-girls-football/get-involved/girls/fun/wildcats>

If you do have an interest in this exciting programme, please get in contact with us here - <https://www.swavesey Spartans.co.uk/contact/>

As previously mentioned, we will be needing a new club treasurer at the end of this season. Quite simply, the club cannot function without this crucial role. Please review the role profile and contact us if you're interested in supporting your local club.

## Overview:

Swavesey Spartans FC is looking for a reliable and organised volunteer to join our committee as Club Treasurer. This key role helps keep our grassroots youth football club financially healthy, transparent, and sustainable — ensuring young players in our community can keep enjoying the game.

## Main Responsibilities:

- Manage the club's bank account and maintain accurate financial records
- Record all income and expenditure, including player subs, match fees, and fundraising
- Prepare simple monthly updates and an annual financial report for the committee
- Support budgeting and financial planning for each season
- Ensure good financial practice and compliance with FA and club policies

## Skills & Qualities:

- Honest, organised, and comfortable working with numbers
- Good communication and teamwork skills
- Basic Excel skills

## Time Commitment:

A few hours per month, with slightly more around registration and end-of-season reporting.

## Why Volunteer:

Be part of a friendly, community-focused club and play a vital role in helping Swavesey Spartans FC continue to grow and provide football for young people of all ages.

Please follow us on our social media platforms.

<https://www.facebook.com/swaveseyspartansfc/>

<https://www.instagram.com/swaveseyspartans/>

**One Club. All Voices. United Through Football**

**HEMINGFORD**  
ARB

PROFESSIONAL TREE SURGEON

- ⊕ Felling/sectional felling
- ⊕ Crown reduction/thinning
- ⊕ Pollarding
- ⊕ Shaping
- ⊕ Hedge trimming
- ⊕ Stump grinding
- ⊕ Firewood for sale
- ⊕ Free quotation

All aspects of garden and tree work covered.  
NPTC Qualified. Fully insured.

Tel: 01480 463674  
Mob: 07876 521605  
Email: hemingfordarb2016@gmail.com

HEMINGFORD  
ARB

City Guilds  
NPTC  
Qualified

## Paying too much for your glasses?

### Save Money - Buy Direct!

Visit our factory shop to see our fabulous range of Discount Prescription Eyewear

- Hundreds of frames to choose from, including designer frames from Ray-Ban, Polo Ralph Lauren, Oakley, PRADA, Ted Baker and Versace
- Specialists in high and complex prescriptions
- Same-day or next-day service available\*
- Save up to 75%
- Huge range of designer sunglasses
- Full range of sports eyewear

Official stockists

\*subject to prescription and availability



**POLO**  
RALPH LAUREN



**PRADA**  
EYEWEAR

**TED BAKER**  
LONDON

**VERSACE**

**We are open 9am to 5pm Monday to Friday, and 9am to 1pm Saturday**



**ALL EYES**  
SPECTACLE MAKERS  
SINCE 1987

Call us

**01954 231545**

Visit our website

**www.all-eyes.co.uk**

20 Norman Way Industrial Park, Over, Cambridge CB24 5QE

## Swavesey & District History Society

September meeting. The first 2025/26 meeting was well attended by about 40 people when Neil Dickinson, a former industrial chemist from Haverhill spoke on the toxic legacy of arsenic. The element arsenic is used commercially as arsenic trioxide, a white powder which is very versatile with a variety of beneficial uses ranging from pesticide control in crops to producing a brilliant green dye used to colour ladies' dresses. It is possible that the eventual cause of Napoleon Bonaparte's death in exile was arsenic fumes from coloured wallpaper. The Victorians said that arsenic is the answer - what is the question? It was initially collected as a waste product from hundreds of tin and copper mines in Devon and Cornwall. Devon Great Consols was a copper mine near Tavistock which also produced 70,800 tonnes of arsenic between 1865 and 1902. Mined as arsenopyrite (iron, arsenic sulphide) it was roasted at high temperature in a labyrinth from which arsenic trioxide was raked and shovelled out by men wearing only a handkerchief across their faces or cotton wool up their nostrils for protection.

In the USA it was used as an insecticide to control Colorado beetle in potatoes, boll weevil in cotton and malarial pests in swamps. In Britain it controlled a number of pests in apple orchards. Sticky flypapers had arsenic added to make the flies even deader and chromated copper arsenate was used to pressure treat timber to prolong its life. The Victorians said it improved facial skin. Fowler's Solution, produced by Thomas Fowler in Stafford, contained 1% potassium arsenite and was first described as a treatment for malaria and syphilis in the late 1700s plus lumbago and epilepsy and was prescribed as a general tonic.

A quarter of a gramme of arsenic trioxide is sufficient to kill a person and many deaths have been attributed to its use. In 1857 Madelaine Smith, a Glasgow socialite was accused of poisoning her lover. Although the circumstantial evidence pointed towards her guilt (she made purchases of arsenic in the weeks before his death, and had a clear motive) the jury returned one verdict of not guilty on the first count and a verdict of "not proven" on the second count. Because of its high cost, it was common to replace some sugar in sweet production. In Bradford in 1858 the confectioner was supposed to purchase gypsum (calcium sulphate, a white powder) but a mistake at the chemist's meant arsenic trioxide was sold. About two kilograms of sweets were sold to the public, leading to around 20 deaths and over 200 people suffering from arsenic poisoning. Mary Ann Cotton was Britain's most prolific female serial killer. She was executed at the age of 40 in 1873 for the single murder of her stepson using arsenic but is believed to have killed many others including 11 of her 13 children, her mother and three of her four husbands for their life insurance policies.

October meeting. About 40 people (members and guests) heard John Vigar, a former architectural historian from Kings Lynn, present "Bedrooms, Banquets and Balls", one of his numerous talks. This talk dwelt on the development of the English Country House and the people living in them. He started with the medieval hall-house then followed architectural tastes and fashions right up to the mid twentieth century. Life in the Middle Ages was firstly about keeping safe and comfortable but also about status. By about 1450 country houses were growing in size with added

rooms, mostly remaining empty but kept for the use of high-status visitors. Royalty often toured the country with an army of servants in tow but Henry VIII challenged this practice, reducing the number of necessary followers with the assistance of the contemporary Cardinal Wolsey. Wolsey set up a list of jobs for the followers to manage and wrote a job description for each.

The speaker looked at the architecture of the houses, their furnishings and the way in which the rooms were used in different periods. Doddington House near Lincoln, built in 1601 had three towers. Two were staircases but the third was a banqueting hall although at that time banqueting referred solely to the desert course of a meal. In 1604 the Somerset House Conference took place when peace was made with Spain and in the painting of the celebratory feast a rich carpet was placed on the table, not on the floor as in earlier practice.

We also heard about the people who lived in these buildings – many of them eccentric and memorable – and discovered the ways in which their whims fashioned the houses we see today. In the 17th century aristocratic houses often had a performing dwarf. Jeffrey Hudson was a dwarf who belonged to the court of Queen Henrietta Maria of England and his party piece was to emerge from an exploding cake towards dinner guests. Lord Anglesey lived at Plas Newydd in Anglesey and loved dressing up and appeared in his own shows in Plas Newydd. The Regency period was a great time for informality with bedrooms no longer private but being used for meetings by large groups of people. Most of the houses illustrated by the speaker are open to the public, but several private homes which he has visited offer a different vision.

### The Easiest Quiz in The World. Qs obtained by Selwyn.

|    |   |
|----|---|
| 1  | How long did the Hundred Years War last?                        |
| 2  | Which country makes Panama hats?                                |
| 3  | From which animal do we get cat gut?                            |
| 4  | In which month do Russians celebrate the October Revolution?    |
| 5  | What is a camel's hair brush made of?                           |
| 6  | The Canary Islands in the Atlantic are named after what animal? |
| 7  | What was King George VI's first name?                           |
| 8  | What colour is a purple finch?                                  |
| 9  | Where are Chinese gooseberries from?                            |
| 10 | What is the colour of the black box in a commercial aeroplane?  |

You will find the answers to this puzzle on page 19

Meetings coming up.....

|                           |   |
|---------------------------|---|
| November 10 <sup>th</sup> | Christmas cards and Paper Craft Workshop. |
|---------------------------|---|

|                          |                        |
|--------------------------|------------------------|
| December 8 <sup>th</sup> | Christmas Celebrations |
|--------------------------|------------------------|

### 2026

|                          |  |
|--------------------------|--|
| January 12 <sup>th</sup> | WI Resolutions/Silent Pre-loved Auction. |
|--------------------------|--|

|                          |   |
|--------------------------|---|
| February 9 <sup>th</sup> | "Make Do and Mend" (re-use, recreate and restyle your wardrobe) |
|--------------------------|---|

Swavesey WI would like to thank everyone who supported our Cake Stall and Raffle held recently in Market Street in September. This event was very successful and £355 was raised for Over Day Care Centre. Thank you very much indeed!

Our Speaker in September was Fran Saltmarsh, who is a speaker well known in WI circles for her excellent talks and presentations on Fashion. Her theme for this meeting was "Fig leaves to Feather Boas", a history in fashion from early times right up to the 1960s! A very entertaining speaker who also brought many costumes from various eras.

We host Compass Cafe on the 4th Thursday of the month providing a super selection of homemade cakes, coffee and tea. Do join us!

For further information please ring Glesny Sheppard 01954 201731 or Deirdre Burgess 01954 230897.

## Over Players Present

Performances 9th to 13th December  
at Over Community Centre

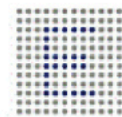


Sound the trumpets! Tickets are now on sale for The Over Players 2025 pantomime: Once Upon A Time from [bookings@overplayers.uk](mailto:bookings@overplayers.uk)

Panto Land is celebrating the upcoming royal wedding between Cinderella's daughter, Princess Lottie, and Snow White's son, Prince Marvellous. Their union is foretold to break the last hold of darkness forever. Evelyn, a wicked witch in charge of Panto Land, vows to stop the marriage, fearing the prophecy banishes evil from Pantoland forever. But Prince Marvellous embarks on a quest to rescue the princess. Along the way he is helped by many folk from fairy land, all ready to battle against Evelyn's schemes and ensure a happy ending.

Expect magical chaos, theatrical flair, and at least one villain who's possibly a bit misunderstood (and probably just needs a hug).

<https://overplayers.uk/>



**ENTIRE**  
GROUP



300007



The Complete Gas Heating and Plumbing Company

**Plumbing • Heating • Gas  
Bathrooms • Water Softeners  
Property Maintenance**

**Tel: 01954 204044 • Web: [www.entiregroup.co.uk](http://www.entiregroup.co.uk)  
Email: [service@entiregroup.co.uk](mailto:service@entiregroup.co.uk)**

# MISCELLANY

## The Queen's Veterinary School Hospital (QVSH)

The General Practice is now registering pets from across Cambridgeshire and our neighbouring counties.

### Why choose us?

Our veterinary practice is dedicated to delivering exceptional care for your pets. Based within the University of Cambridge Veterinary Teaching Hospital, we're proud to be a not-for-profit practice and referral hospital – with every penny of profit reinvested to improve facilities, advance veterinary medicine, and train the Cambridge student vets of tomorrow.

Conveniently located just off the M11 with free on-site parking, we offer everything your pet needs under one roof – from routine check-ups and vaccinations to advanced specialist treatment, with seamless referrals to our hospital when required.

**Ready to register your pet with us?** We can't wait to welcome you! Registering your pet is quick and easy - simply complete our form and let your current practice know you're moving to the QVSH General Practice – we'll take care of the rest.

Fill in our registration form by using your phone camera on the QR Code to find our form online or use the URL below.

[www.hospital.vet.cam.ac.uk/small-animal-general-practice-registration-form](http://www.hospital.vet.cam.ac.uk/small-animal-general-practice-registration-form)



Find us at this website address: [www.hospital.vet.cam.ac.uk/general-practice](http://www.hospital.vet.cam.ac.uk/general-practice)

Tel: 01223 337621

Email: [hospital@vet.cam.ac.uk](mailto:hospital@vet.cam.ac.uk)

Address: Madingley Road, Cambridge, CB3 0ES

## R. A. Miller

### Plumbing and Domestic Heating

Fenside, 71 Willingham Road, Over  
Cambridge CB24 5PE

Tel: 01954 203277 Mob: 07831 853885

Email: [robert.miller@ntlworld.com](mailto:robert.miller@ntlworld.com)

### All plumbing work undertaken

- » New boiler replacement and installation with free quotation.
- » GAS boiler and GAS fire servicing  
Landlord Certificates.
- » Heating problems - Diagnosis  
and rectification.
- » General plumbing - taps, washers,  
pipework, showers, etc.
- » Full and partial Bathroom installation work.

For a reliable and professional service

Robert Miller MCIPHE RP



Office 01954 203 277  
Mobile 07831 853 885



## REED KITCHENS & BATHROOMS

DESIGN TO INSTALLATION  
THE COMPLETE SERVICE

We are a local established company since 1994 that manufactures a range of top quality kitchens and offers them direct to you, at an upfront price that includes everything from design to full installation. It also includes your choice of top range appliances from the likes of NEFF and Bosch.

Makeover your kitchen using our door and worktop replacement service.

Call for a free Brochure



KITCHENS



BATHROOMS



BEDROOMS

Tel: 01954 232899 Mobile: 07711 696015

For more details visit: [www.kitchenscambridge.com](http://www.kitchenscambridge.com)  
email: [glenn@kitchenscambridge.com](mailto:glenn@kitchenscambridge.com)

## Is your landline your lifeline?

Landlines are changing. By January 2027\*, traditional landlines will be upgraded with digital technology. This national upgrade is known as the Digital Switchover and will mean that landline calls will be made over the internet instead of the old telephone network. Telephone providers are responsible for switching customers to the upgraded service, but everyone is encouraged to check if and how the change will affect them.

Do you rely on a personal alarm or telecare device?

It's important to check how the Digital Switchover will affect you, especially if you also rely on personal alarms or telecare devices (like fall detectors or lifelines), which may stop working.

For many, the change will be simple. All you will have to do is plug your landline phone into a broadband router instead of a traditional phone socket. But if you don't have an internet connection at home, or if you rely on your landline every day, this change might affect you more.

Three things you can do now to prepare for the Digital Switchover

1. Call your phone company – Ask if the change affects your phone line or any connected devices. Ask to speak to customer services and use the number on your most recent bill.
2. Ask for help if you need it – A trusted friend, family member or neighbour can help you make the call to your phone provider or speak to your provider on your behalf.
3. Watch out for scams – Your phone provider will not ask for money upfront. If something doesn't feel right, hang up and call the official number.

The good news is landlines are not going away, you can usually keep your existing phone and number, and it's the responsibility of your phone company to guide you through the process.

We know that for many people, the landline is more than just a phone - it's a lifeline. That's why Connecting Cambridgeshire is here to help make sure no one is left behind.

Don't wait - call your phone provider today.

Local libraries and community champions providing information hubs for vulnerable residents

Recognising that older and more vulnerable residents are best supported in trusted, community locations, libraries are acting as information hubs for the campaign. Every library, including community and mobile libraries in Cambridgeshire and Peterborough have free printed information available about the Digital Switchover. Particularly vulnerable residents, for whom their landline is a lifeline, should ask for a copy of the leaflet "Prepare for the Digital Switchover in 3 easy steps".

For more information, visit: [www.connectingcambridgeshire.co.uk/digitalswitchover](http://www.connectingcambridgeshire.co.uk/digitalswitchover)

\* Deadline confirmed by Openreach at time of publication.

## Answers to Selwyn's Alphanumeric Quiz on page 13

|    |   |                  |
|----|---|------------------|
| 1  | 24 How long did the Hundred Years War last?                     | 116 years        |
| 2  | Which country makes Panama hats?                                | Ecuador          |
| 3  | From which animal do we get cat gut?                            | Sheep and horses |
| 4  | In which month do Russians celebrate the October Revolution?    | November         |
| 5  | What is a camel's hair brush made of?                           | Squirrel fur     |
| 6  | The Canary Islands in the Atlantic are named after what animal? | Dogs             |
| 7  | What was King George VI's first name?                           | Albert           |
| 8  | What colour is a purple finch?                                  | Crimson          |
| 9  | Where are Chinese gooseberries from?                            | New Zealand      |
| 10 | What is the colour of the black box in a commercial aeroplane?  | Orange           |

## Quality Bespoke Secure Storage

### Space for all your storage needs

Easy to open & fast to access. High security with PIN codes, HD CCTV cameras & individual room alarms. Choose as little or as much space as you really need, for any length of stay, with no long term commitment. Clean, dry, ventilated & condensation free. Friendly & helpful service with packaging available. Open to customers everyday from 7am to 9pm. Viewings arranged by appointment.

**MoreSpace**

• Home • Document • Commercial

Located at Manor Farm, Graveley, PE19 6PH. Mention SMM22 to receive £5 discount on your first month of storage room rental.



[www.morespacestorage.co.uk](http://www.morespacestorage.co.uk)

Call 01480 830130

# Compass Café

"Encompasses the community"

All are welcome on Thursdays  
10:30am until 12 noon  
At Bethel Baptist Church



Our cakes are homemade,  
our coffee and sugar are Fairtrade,  
our tea bags are plastic free.



Priced to be affordable:  
Tea/coffee/hot chocolate £1 per mug  
and Cakes £1.50 per large slice  
Squash is free

Please use the side door to enter, the far side door has  
a ramp for wheelchair users and pushchairs, and there is  
a carpet and toys for pre-school age customers.

Compass Café is run as a community event, a place to meet  
and chat. Your hosts are a group from one of:  
Bethel Baptist Church, Girlguiding Units in Swavesey,  
Swavesey Primary School PTA, St Andrew's Church  
and Swavesey Women's Institute.

**When there is a 5th Thursday in the month other groups  
are invited to run the café to fundraise. Please get in  
touch with Sue Ellington if you would like to know more.  
sue.ellington@virgin.net or phone 07774 146331  
All the 5th Thursdays in 2025 are now booked.  
Future 5th Thursday dates in 2026: 29th Jan, 30th Jul, 29th Oct**

Room for plenty more paws!

Vets  
for  
Pets  
Bar Hill

Your locally  
owned  
vets on  
Viking Way,  
Bar Hill

Cats

Find out more about us

**Celebrating  
almost one  
year on the  
block!**

Phone: 01223 243535  
whatsapp: 07360 493 944  
Email: barhill@vetsforpets.com

Shh...If you quote  
"Swavesey meridian" you  
could get £30 off our  
Complete Care plans

# SWAVESEY LIBRARY

is your local voluntary run community library



Swavesey Library has just installed a fantastic new children's corner, as part of our redevelopment of the library in its new location - the old stage area within the old hall.

This was kindly designed and build by Stuart Faben Joinery.

Come along and see it for yourself, it's a really great asset to the library and gives the children a quiet enclosed area to enjoy all the fantastic books we have to offer.

The library is easy to find, our entrance is through a door into the college building to be found on the far righthand side of the Gibraltar Lane car park. Just follow the library signs into the college and along the corridor past the new college kitchen to our new location. The old Stage area within the old hall.

We can provide you with the majority of the services you may find in the larger town libraries right on your doorstep, such as - a large range of adult fiction, autobiographies

and large print books, Children's – early readers to young adult books; plus internet access and local information.

In addition, with our links to the Cambridgeshire County Council Library Service you can order books from most Cambridgeshire libraries for collection at Swavesey.

All you need to be is a member of the Cambridgeshire Library service to borrow our books (and those from other Cambridgeshire Libraries), and if you're not, then we can soon enrol you and your family.

We also stock numerous second-hand books for sale – only 50p each.

So why not pop along today.

**We are open: -**

**Tuesday afternoons 3.30pm -5.30pm,**

**Wednesday evenings 5pm – 7pm and**

**Saturday mornings 10 – 12 noon.**

For further information; - see our web site:

<http://www.swavesey.org.uk/community/swavesey-your-library/>

Facebook at Swavesey Village Life or contact:

Richard at [Richard94hart@gmail.com](mailto:Richard94hart@gmail.com) / 01954 202707 or

Doug at [Doughuntuk@yahoo.co.uk](mailto:Doughuntuk@yahoo.co.uk) / 01954 232478.

**FLOOR COVERINGS**

Cambridgeshire's largest flooring showroom est. 1996

- Luxury Vinyl Tiles (LVT)
- Laminate - Hardwood & Natural
- Over 3500 Carpet samples
- Cushion Vinyl

◆

**FREE** no obligation quotes.  
Fitted by fully employed craftsmen with over **100 years** experience.

◆

**01223 233233**

**www.floor-coverings.net**

◆

**Showroom:**  
Unit 31-32 Dry Drayton Industries, Scotland Road,  
Dry Drayton, Cambridge CB238AT  
Open: Mon - Sat 9-5

Scan to see our showroom

WINNER 2016  
WINNER 2019

Family firm since 1974

# PEST PROBLEM?

LOCAL QUALITY SERVICE

pest control/prevention/  
emergencies/contracts/quotations/  
birds/rodents/insects/more...

t: 01954 230708  
m: 07789 502556  
w: [www.drepestcontrol.co.uk](http://www.drepestcontrol.co.uk)  
e: [info@drepestcontrol.co.uk](mailto:info@drepestcontrol.co.uk)

BPCA

**DRE** Pest Control Limited

19, WALLMANS LANE  
CAMBRIDGE  
CB24 4QY

## Doctors Surgeries

### Swavesey Surgery

(01954) 230202  
Out of hours 111

Website:- [www.swaveseyurgery.nhs.uk](http://www.swaveseyurgery.nhs.uk)  
Information & updates on facebook page

### Over Surgery

(01954) 231550  
Out of hours 111

Website:- [www.oversurgery.nhs.uk](http://www.oversurgery.nhs.uk)  
Information & updates on facebook page

### Longstanton

(01954) 207600  
Out of hours 111

Website:-[www.willinghammedicalpractice.nhs.uk](http://www.willinghammedicalpractice.nhs.uk)

See our website at [www.swaveseymeridian.org.uk](http://www.swaveseymeridian.org.uk)  
for the full and latest surgery newsletters. Ed

### Bar Hill Surgery

(01954) 780442

Out of hours (01954) 780442 -  
*call will automatically be diverted*  
Website:- [www.maplebarhill.co.uk](http://www.maplebarhill.co.uk)

### Fenstanton

7E High Street, Fenstanton  
01480 461873

Out of hours 111

Website:- [www.riverportmedicalpractice.nhs.uk/location/fenstanton/](http://www.riverportmedicalpractice.nhs.uk/location/fenstanton/)

## Make sure you are protected this winter

NHS Cambridgeshire & Peterborough urging anyone eligible for their COVID-19, flu, RSV or pneumococcal vaccines to make sure they've had them this winter. Each vaccine has a slightly different eligibility criteria:

- RSV vaccine – for anyone who is pregnant, aged 75-79, or anyone who turned 80 years old from 1 September 2024.
- Pneumococcal vaccine – for anyone 65 or over (only one dose is needed).
- Flu vaccine – for anyone aged 65 or over (including those who will be 65 by 31 March 2025); have certain long-term health conditions; are pregnant; live in a care home; are the main carer for an older or disabled person, or receive a carer's allowance; or live with someone who has a weakened immune system.
- COVID-19 vaccine – for anyone aged 75+; those aged between six months and 74 years and have a weakened immune system because of a health condition or treatment; and people who live in a care home for older adults.

For some people who have got used to having their COVID-19 and flu vaccine together in winter, this might mean a change for them as the COVID-19 vaccine age criteria has changed from people over 65 to people over 75.

To find out more about these vaccines, and how to book them, or find a walk-in clinic, please visit The Vaccinators website <https://www.cpics.org.uk/the-vaccinators>



Community Warden

## Swavesey Community Warden Scheme

**Do you or a loved one need support to live independently at home?**

**If so the Community Warden Service can provide:**

- Daily contact Mon-Fri (in person or via the phone) to ensure a sense of security and wellbeing.
- Assistance with practical tasks such as light shopping, collecting prescriptions.
- Navigation and advice on local community services.
- A compassionate and listening ear.
- A companion to alleviate feelings of isolation and loneliness.

**Book a 2-week free taster to see whether this service is right for you.**

## Contact Us

Email: [wardens@ageukcap.org.uk](mailto:wardens@ageukcap.org.uk)

Tel: **07436 102 736**

## SCHOOLS INFORMATION

### Swavesey Primary School Early Years and Playwork Centre Wraparound Care and Early Years Provision - Mon to Fri - term-time

Registration Fee £15 per family for using Breakfast and/or After School Club

#### Breakfast Club 7.30 am - 8.55 am

3+ year olds to Year 6 children: £6.50 per child per session

#### After School Club 3.15 pm to 6.00 pm

For Reception to Year 6 children: £13 per child, family rate £12 per child

#### Early Years 9.00 am to 3.00 pm (full day) or morning (9-12/1) or afternoon (12-3)

For 2½ year olds to 4 year olds

Places for funded children up to 30 hours per week

Charged sessions:-

3-4 year olds £17.25 half-day and £34.50 full-day.

2 year olds £24.45 Mornings only

£5.75 for lunch hour (12-1)

For more information and to register:-

[www.swavesey.cambs.sch.uk](http://www.swavesey.cambs.sch.uk) (Select EY & P)

[eyandp@swavesey.cambs.sch.uk](mailto:eyandp@swavesey.cambs.sch.uk)



9.30 am – 10.15 am  
Music Theory classes for ALL

10.15 am – 11.00 am  
Little Rockets for 3-9 yrs  
Join the Band & Find your voice!



11:00 am – 12:00 pm  
The BIG Rock School for  
Drummers, vocalists or guitarists  
with some experience or have  
been playing for some time aged  
10 yrs+



10.15 am – 11:00 am  
The BIG Sing!  
(aka Choir/Sing up – 7 – 77yrs! ALL AGES)

11am – 12pm  
The BIG Orchestra!  
An opportunity for children,  
parents, adults & community in  
an orchestra together.  
Everyone welcome... beginners  
to experienced players!

# Swavesey Music School

[admin@swaveseymusic.co.uk](mailto:admin@swaveseymusic.co.uk)  
Swavesey Village College CB24 4RS

Visit our truly stunning display gardens ...



**Probably the largest display centre in the UK,  
selling directly to trade and the general public**

Bannold are one of the UK's largest independent suppliers of natural hard landscaping materials. We stock natural products sourced directly from the UK and around the world enabling Bannold to offer premium products at the most competitive rates to trade and the general public.

- Natural Paving • Setts and Paviours • Stone Walling
- Decorative Gravels • Rockery • Boulders • Waterfeatures
- Topsoils • Soil Improvers • Bark Mulches • Sands
- Hardcore and Cements

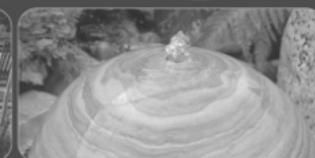


Freephone: 0500 012231  
or 01954 231666

Capability Barns  
Huntingdon Road  
Fen Drayton  
Cambridge CB24 4SD

Opening Times:  
Mon-Fri 07.30 till 5.00  
Saturdays 09.00 till 1.00

[www.bannold.co.uk](http://www.bannold.co.uk)



# PARISH & COUNTY NEWS

## From Your DC Sue Ellington

Dear Residents

As you may know your postal election vote is now limited to three years and therefore may be expiring soon. At the start of the Summer there were more than 15,000 electors that needed to make a new application. That number is now down to just over 7,200. Where SCDC holds an email addresses for electors, you will have received a reminder but if there is no email SCDC will send you a letter with a new application form. But anyone who has not made a new application by the end of January will have their postal vote cancelled. You will receive confirmation in writing. But if I can be of help please don't hesitate to contact me.

So if you want to renew your postal vote. The easiest way for a resident to re-apply is online at [www.gov.uk/apply-postal-vote](http://www.gov.uk/apply-postal-vote), or email [elections@scambs.gov.uk](mailto:elections@scambs.gov.uk) if you have any questions.

The count down to a decision about the make up of the new Unitary Authority(ies) continues. SCDC and The City have decided to back a Unitary which only includes them. Thus leaving Fenland, Peterborough, Huntingdon and East Cambs to form the other Unitary Authority. The business case continues to be developed and will be presented to the Government by the end of November. I am surprised that more attention was not given to the various resident and stakeholder surveys and I feel we should include Huntingdon as we have so many links through the River and rural interests. But we have to wait and see what the Government decides.

As always if I can help please phone 07774 146331 or email: [Cllr.Ellington@scambs.gov.uk](mailto:Cllr.Ellington@scambs.gov.uk)

## Memorial Hall Newsletter

Oct 2025

### Keeping you posted 😊

Over the past year, we've been working to improve accessibility in the rear car park. Following a helpful suggestion, the Trustees created a designated disabled parking space at the rear of the hall. This led to the addition of a new pathway from Wallmans Lane, connecting to the existing rear paving. To complete the upgrade, new parking posts have been installed and a fresh delivery of gravel has been laid. A big thank you to Andy from AMS Group helping us spread the load 😊



### Car Park

Managing the Hall's Car Park is an ongoing issue. The Car Park is only to be used by those who have hired the hall. Please remember it's a Private Car Park of a very busy Village Hall where people have paid to hire the facility. The Disabled Spaces are for attendees at the Hall.

### Grant Funding Success

Finally, after 3 applications, lots of hard work and determination, we secured funding from the Rural Prosperity Fund for Solar Panels and new Led light fittings in the Main Hall.

These upgrades will significantly benefit the hall by reducing electricity costs, allowing us to maintain current hire charges for another year, and helping us move closer to our sustainability goals.



### Hall Meetings

The Trustees meet every 6 weeks to discuss managing the Hall and make decisions on maintenance and the wish list!

### Upcoming Projects

The Trustees are continually reviewing the maintenance needs of the hall to ensure it remains in great condition for all users. Looking ahead to 2026, planned improvements include replacing the fascia boards, updating the corridor light fittings, and upgrading the heating units in the Snooker Room.

Fingers crossed!

### HALL'S HOURLY RATES

W.E.F 1<sup>ST</sup> APRIL 2025

|          | HALL    | MEETING ROOM |
|----------|---------|--------------|
| CLUB     | £ 11.00 | £ 9.00       |
| RESIDENT | £ 19.00 | £ 15.00      |
| BUSINESS | £ 22.00 | £ 22.00      |

For further information about the Hall contact Mrs Nicole Mullee: Tel 07963 861791 or email [memorialhall@swavesey.org.uk](mailto:memorialhall@swavesey.org.uk)

# SWAVESEY PARISH

## Parish Council News September/October 2025

### County Council Business

Highways maintenance items have been discussed with our area maintenance officer and we hope to see more progress in the next couple of months to complete awaited outstanding issues.

Various road closures are still taking place for utilities work, please look for reminders and details on the Parish Council website at [www.swavesey-pc.gov.uk](http://www.swavesey-pc.gov.uk)

### Traffic Calming Projects

- The 20mph limit proposals have now been finalised and are undergoing CCC road safety team audit and formal consultation during November. The final plans have been published on the PC [traffic calming](#) pages of the website.
- Boxworth End-Ramper Rd scheme has been amended to include a giveway feature in Boxworth End on the north side. Updated plans to show the location have been published on the PC [traffic calming](#) pages of the website.
- Speedwatch. Regular sessions are now taking place however more volunteers are required. Please contact us if you would like to help: [clerk@swavesey-pc.gov.uk](mailto:clerk@swavesey-pc.gov.uk)

### Guided Busway fencing

Work has now started, on the southern section, to install permanent fencing alongside the entire route of the busway. Parish Councils are being consulted with regard to formal and informal crossing points of the busway and how this will affect those crossings. Your PC is involved with these discussions.

The PC continues to liaise with our County Councillor to discuss all the outstanding issues. A [monthly report](#) from Cllr Chris Poulton is also published on our website.

### Planning

The construction of the 70 home site off Middle Watch (opp Ramper Rd) has now started. The Parish Council is liaising with the contractor with regard to the impact during construction on the village. Updates will be published on the Parish Council website as the project progresses.

### Boxworth Gateway, Tritax Big Box & Cambridge25 Logistics Sites Proposals

In the past couple of months three large development site proposals have come forward to Gtr Cambridge Planning at the Swavesey/Boxworth and Bar Hill junctions of the A14. Swavesey Parish Council is working alongside other local villages to raise objections and concerns over the proposals. Concerns are being raised over increased traffic, HGVs, safety around the A14 junction and the surface and foul water implications on the Swavesey drainage system amongst other issues. During October Gtr Cambridge Planning gave a briefing to the Parishes affected by these proposals to provide an overview and context in relation to the Local Plan. We continue to work together to highlight the implications on local communities as these proposals come through to planning application stage.

# COUNCIL NEWS

Public consultations have been and will be carried out by the developers involved in each site and we encourage you to attend these and return your comments and concerns.

[Boxworth Gateway](#), [Tritax Big Box](#) & [Cambridge25](#) Logistics Sites Proposals

### Fens Reservoir Project

Anglian Water continues to progress the project for a new reservoir on land north of Chatteris. A third public consultation is now underway and the Parish Council is involved in these discussions and is putting concerns and comments through. A large underground pipe will be laid through Swavesey Parish, as part of the route for water from the reservoir to flow to Madingley to a Cambridge Water treatment centre to provide freshwater for the Cambridge area.

### Drainage

The PC took part in discussions with the County's Flood Team and representatives from the Environment Agency, Anglian Water, SCDC Watercourses and Swavesey IDB during October to look in detail at water management and flood risk in the Parish.

### Village Maintenance & Projects

**Recreation Green** - As mentioned last month, due to the extremely dry spring and summer the clay soil on the Recreation Green has been opening up and drainage channels sinking. During October 40 tonnes of soil was brought in to fill trenches however the ground desperately needs rain. This has also meant it has been unsafe for the regular football matches to be played on there. The PC will continue to monitor the ground conditions and work with the football clubs, however we ask everyone to be aware of the conditions when walking over the Green.

At the September Council meeting, the subject of a car park on the front of the recreation green was discussed, with the Council deciding not to pursue this. The recreation green is a registered Village Green and Field in Trust, both of which hold restrictions on how the space can be used. Village greens receive statutory protection under Section 12 of the Inclosure Act 1857 and Section 29 of the Commons Act 1876. Both of these Acts are still law today. It is an offence under Section 12 of the Inclosure Act 1857 to damage or encroach upon a Village Green. Section 29 of the Commons Act 1876 states that it is only an offence where the encroachment is made 'otherwise than with a view to the better enjoyment of the green'. Therefore if a car park were to be provided it could only be available to those who are using the space for recreation. In any case consent should be sought from the Secretary of State before any 'work' or construction is carried out and additional land provided to replace that removed. In the Local Plan the Green also has a protected countryside frontage designation, identified to indicate that the frontage and the open countryside beyond should be kept open and free from development.

During September and October we had two instances of trees being damaged on the Recreation Green. One was set on fire, thankfully it went out very quickly and only scorched the grass and lower part of the tree trunk. We hope the tree will survive. The second incident was a tree being pulled out of the ground together with its stake and the metal cage around it. This tree has not been able to be replanted and a replace-

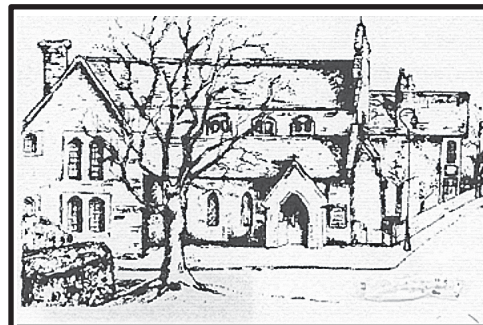
ment will be arranged. These were young trees donated to the village for the Recreation Green. In the first incident the perpetrators were identified and for both incidents the Police were informed and where possible action taken to follow up.

**Sportsfield Field Project** - Alongside this, the Council is progressing a project to turn the field at the end of Burgess Close into a community sports facility, which will include sports pitches, onsite parking as well as changing room facilities. The field was gifted to the community as part of recent housing developments. The PC is currently going through pre-planning and investigating costs, design, consultation and fundraising. More information will be available in a few months.

**Ponds** – Swan Pond and School Pond are having annual maintenance carried out and this year this will include digging out the reed roots from both ponds. The reeds have taken over the ponds over the past two years and this year most of the water also dried out. It is hoped to carry out the digging out work during November/December.

Further details on everything that is discussed at the Parish Council meetings can be found in the Minutes and on the Council's website at [www.swavesey-pc.gov.uk](http://www.swavesey-pc.gov.uk)

| <b>Swavesey Parish Council</b>  |                          | <b>Website: <a href="http://swavesey-pc.gov.uk">swavesey-pc.gov.uk</a></b>  |
|---|--------------------------|---|
| <b>Parish Councillors</b>   | <b>Telephone (01954)</b> | <b>E-mail address</b>   |
| Doug Hunt (Chairman)  | 232478                   | <a href="mailto:dhunt@swavesey-pc.gov.uk">dhunt@swavesey-pc.gov.uk</a>  |
| Colin Parsons (Vice-Chair)  | 610357                   | <a href="mailto:cparsons@swavesey-pc.gov.uk">cparsons@swavesey-pc.gov.uk</a>  |
| Lisa Boyes  | 07747 002296             | <a href="mailto:lboyes@swavesey-pc.gov.uk">lboyes@swavesey-pc.gov.uk</a>  |
| James Dodson  | 230560                   | <a href="mailto:jdodson@swavesey-pc.gov.uk">jdodson@swavesey-pc.gov.uk</a>  |
| Martin Johnston   | 200605                   | <a href="mailto:mjohnston@swavesey-pc.gov.uk">mjohnston@swavesey-pc.gov.uk</a>  |
| Warren Wright   | 203172                   | <a href="mailto:wwright@swavesey-pc.gov.uk">wwright@swavesey-pc.gov.uk</a>  |
| Jonathan Kerley   | 231304                   | <a href="mailto:jkerley@swavesey-pc.gov.uk">jkerley@swavesey-pc.gov.uk</a>  |
| Rachel Vollerthun   | 07312 102526             | <a href="mailto:rvollerthun@swavesey-pc.gov.uk">rvollerthun@swavesey-pc.gov.uk</a>  |
| Sue Ellington   | 202923 / 07774 146331    | <a href="mailto:sellington@swavesey-pc.gov.uk">sellington@swavesey-pc.gov.uk</a>  |
| Sue Rogers  | 0777 224 7673            | <a href="mailto:srogers@swavesey-pc.gov.uk">srogers@swavesey-pc.gov.uk</a>  |
| Paul Twinn  | 01954 488578             | <a href="mailto:ptwinn@swavesey-pc.gov.uk">ptwinn@swavesey-pc.gov.uk</a>  |
| <b>Clerk:</b> Linda Miller  | 202982 / 07458 302193    | <a href="mailto:clerk@swavesey-pc.gov.uk">clerk@swavesey-pc.gov.uk</a>  |
| <b>District Councillor:</b> Sue Ellington   | 07774 146331             | <a href="mailto:cll.ellington@scambs.gov.uk">cll.ellington@scambs.gov.uk</a>  |
| <b>County Councillor:</b> Chris Poulton<br>Papworth & Swavesey Ward   |                          | <a href="mailto:Chris.Poulton@cambridgeshire.gov.uk">Chris.Poulton@cambridgeshire.gov.uk</a><br><a href="https://www.cambridgeshire.gov.uk/council/county-councillors">https://www.cambridgeshire.gov.uk/council/county-councillors</a> |
| <b>Memorial Hall Administrator:</b><br>Nicole Mullee  | 07963 861791             | <a href="mailto:memorialhall@swavesey.org.uk">memorialhall@swavesey.org.uk</a>  |
| Swavesey Parish Council meets on the 2nd Thursday of each month for Planning items and on the 4th Monday of each month for Full Council.<br>All meetings are held in the Memorial Hall at 7.30pm. There is always a 10 minute public forum at the start of the meeting. |                          |   |



**SACRED HEART OF JESUS**  
**Roman-Catholic Parish**  
19 Needingworth Road, St Ives, Cambs. PE27 5JT

**Priest in Charge: Fr Trindade J Monteiro**

Tel: 01480 462 192  
[www.sacredheart-stives.org.uk](http://www.sacredheart-stives.org.uk)  
email: [office@sacredheart-stives.org.uk](mailto:office@sacredheart-stives.org.uk)

Mass Times:  
Saturday 17.00 (Anticipatory)  
Sunday 09.00 and 11.00

**SACRED HEART RC PARISH HALL**

**AVAILABLE FOR HIRE**

Sacred Heart St Ives  
19 Needingworth Rd, St. Ives,  
Cambridgeshire, PE27 5JT

Suitable for Community Groups,  
Conferences & Meetings,  
Coffee mornings, Classes & Parties.

Our parish hall is now available to rent  
at £20 an hour An additional fee of £25  
will be applied for use of the kitchen.  
Guest WiFi available

Please enquiry on tel.:  
(+44) 1480 462 192

e- mail:

[office@sacredheart-stives.org.uk](mailto:office@sacredheart-stives.org.uk)

Website:

[www.sacredheart-stives.org.uk/the-church-hall](http://www.sacredheart-stives.org.uk/the-church-hall)



**HOCKEYS**  
ESTABLISHED 1885

**Thinking of a move? We are happy to offer you a free, no obligation valuation of your property.**



Call our Cambridge office for a free valuation  
**(01223) 356054**



Call our Willingham office for a free valuation  
**(01954) 260940**

## St Andrew's Church



### Services at St Andrew's

Please join us for worship at 11am on any Sunday morning including, on the fourth Sunday of the month, our All Together Worship Service. At 8pm on the first Thursday of every month, we have fifteen minutes of silence and prayer followed by Compline remembering the people of Ukraine and other countries affected by war.

You can find information about all our services and events on Facebook and online at A Church near You: <https://www.achurchnearyou.com/church/2834/service-and-events/events-all/>

### Christmas Services

There will be a range of services at St Andrew's over the Christmas Season:

Sunday, November 30th :4:30pm: Christingle Service

Saturday, December 13th: Village Carols on the Green

Saturday, December 20th: Swavesey Community Choir Come and Sing

Sunday, December 21st: 6pm: Carol Service

Wednesday, December 24th: 4:30pm: Crib Service

Wednesday, December 24th: 11:30pm: Midnight Communion

There will not be a service in St Andrew's on Christmas Day but you will be very welcome to celebrate at any of the other 5Folds churches on Christmas morning.

### A message from our new Team Vicar

Dear all, I'm Ed, the new Vicar in the 5Folds ministry team. My wife, daughter and I are really enjoying settling into village life and are looking forward to getting to know Swavesey better as we continue to explore the area. I'm also looking forward to ministering the beautiful Church. When I'm not taking services, I'm a serial hobby-starter, but the ones that have stuck are music (singing and composing) and competitive tiddlywinks.

Do get in touch and introduce yourself if we haven't met already!"



### Ministry Team:

Rev'd Stephen Dove (Team Rector): [stephen@5folds.org.uk](mailto:stephen@5folds.org.uk)

Rev'd Ed Green (Team Vicar): [ed@5folds.org.uk](mailto:ed@5folds.org.uk)

Canon Jan Payne (Licensed Lay Minister): [jan.payne@northstowe.church](mailto:jan.payne@northstowe.church)

Colin Smith (Benefice Administrator): 01954 203459 [admin@5folds.org.uk](mailto:admin@5folds.org.uk)

Churchwardens: Jacqui Fuller: 01954 230774 and Bridget Lofts: 07732726228



## St Andrew's Church



### Diddy Disciples Sunday School



This is our new Sunday School for younger children. We sing songs, draw and make things and most of all, learn about Jesus. We meet every Sunday at the back of church. Do join us.

Emmaus House Group

We are a small group of people who meet every other Wednesday morning on Zoom to learn more about God through studying the Bible. We choose our own subjects and ask lots of questions but don't always find the answers! More details from Nicky Carne: [nicky\\_carne@hotmail.com](mailto:nicky_carne@hotmail.com) or the churchwardens.



Craft Group



Our group meets every other Wednesday to work together on group activities; have you seen our decorations on the carpark cross? You can bring your own craft activity to work on or just come to enjoy the company over a hot drink and cake.

Details from Jacqui Fuller: [jacqui\\_fuller@hotmail.com](mailto:jacqui_fuller@hotmail.com)

Meet us at Swavesey's Community Café - Compass Café every third Thursday of the month, 10:30am – 12 noon. Enjoy our wonderful cakes and coffee.



### Events at St Andrew's in 2026

Here are a few dates to put in your new diaries:

January/February: Snowdrop Walk in the garden of Priory House (date to be confirmed, look out for information on social media)

Friday, 23rd January: 7.00 pm: Dr Larry's Quiz Night

Sunday, March 15th: Afternoon Tea on Mothering Sunday

Saturday, May 16th: 10:00: Plant Sale

Saturday, June 27th: 2:00 – 4:00pm: Teddy Bear Zip Wire





**Club Vintage - Wednesdays 2-4pm**

A warm welcome awaits older people and the club is dementia-friendly. There is a small £3 weekly charge. Enjoy a rotating variety of activities such as chair-based exercise, singing, bible-based crafts, quizzes, games and entertainment from others.



**Compass Café - Thursdays 10:30am-12pm**



You will receive a very warm welcome at our community run cafe. Enjoy reasonably priced coffee, tea and homemade cakes.

**LITTLE LIGHTS - Fridays 10am-12pm**

Baby & toddler group. All are welcome, bumps, babies, toddlers, parents and carers. Drop in at anytime for as long as you need. Only £2 per family, including drinks & snacks for all! We hope you can come along and join us!



**The Hub - Youth Group - Fridays 7-9pm**

Open to all year 6 and secondary aged children. Come along and meet up with friends, chat, play games, listen to music and much more! Snack bar also available. £1 entry fee. Parents must complete a permission form.

**Craft & Chat - 1<sup>st</sup> Saturday of every month 10am-12pm**

Bring along your craft and share a cuppa! Whatever it is you are working on, (whether knitting or cross stitch, painting or scrap booking) come and enjoy a relaxed Saturday morning with other crafters.



**Sunday Services - Sundays 10:45am**

You are warmly invited to join us for our weekly services followed by coffee in our compass room. Our services are open to all and are family friendly with children's Sunday School groups for all ages! Every first Sunday of the month is our alternative all age, café-style service which include refreshments around tables, conversation and maybe even some crafts! We have a special Communion service once a month on the 3<sup>rd</sup> Sunday. At Bethel we are brought together by our Faith, but what truly makes us family is our passion to serve God and love one another through every season.



**There's lots on this Christmas season at Bethel. We extend a warm welcome to all!**

**Christmas Sanctuary - Sunday 14th December, 6pm at Bethel - Join us for a contemporary carol service, suitable for the whole family.**

**Carols by Candlelight - Sunday 21st December, 7pm at Bethel - Join us for a traditional 9 lessons and carols service by candlelight. The service will be followed by mince pies and mulled wine.**



**Swavesey Village Carols are returning to Market Street.**

**Saturday 13th December, 5-7:30pm**

**Join us for carols with a live brass band, dress up & join the nativity, mulled wine & mince pies, Christmas stalls and a special visitor towards the end of the evening!**

**CONTACT US**

*Pastor Bob - [pastorbob@bethelbaptistchurch.org.uk](mailto:pastorbob@bethelbaptistchurch.org.uk)*

*Sue Hope (Secretary) - [secretary@bethelbaptistchurch.org.uk](mailto:secretary@bethelbaptistchurch.org.uk)*

*Charlotte Holmár (Administrator) - [admin@bethelbaptistchurch.org.uk](mailto:admin@bethelbaptistchurch.org.uk)*

[www.bethelbaptistchurch.org.uk](http://www.bethelbaptistchurch.org.uk)

[www.facebook.co.uk/SwaveseyBethel](https://www.facebook.co.uk/SwaveseyBethel)

**‘Christmas is a season not only of rejoicing but of reflection’**

Winston Churchill.

**Reality, Not Nostalgia.**

Until the mid–nineteenth century, nostalgia was understood to be a form of psychosis. In his Dictionary of Music, Rousseau records that Swiss mercenaries were forbidden from singing their folk songs because they induced a painful yearning to return to their country. It was Swiss physician Johannes Hofer in 1688 who coined the term ‘nostalgia’ the word combines the Greek for homecoming – nostos – and pain – algos. The condition was connected not only with a liability to desert but also with all kinds of physical symptoms, up to and including death.

It is strange then, that we quite enjoy a mild version of this dis–ease. More recently, psychologists have identified the ways in which

**“Nostalgia, once evoked, re–establishes psychological equanimity. It elevates mood, self–esteem, and a sense of social connectedness; it fosters perceptions of continuity between past and present; it increases meaning in life; and it “fights off” death cognitions”.**

Nostalgia group. University of Southampton.

Christmas time is peak nostalgia, and 2025 will be no different. Many will be experiencing a painful longing for home or the happiness of the past. Techniques to gain some comforts are watching Christmas films, listening to festive playlists and decorating our homes with tinsel and trees.

The church responds with sincerity producing activities like carol services and plays, midnight Mass etc. All to encourage us all to look beyond nostalgia and consider the reality of the advent season for today.

We should be asking the question, what are we really longing for? Whatever it might be it cannot be found by hiding from the chaos of the world or by smothering ourselves in a festive bubble or treating church activity as the religious equivalent of a shopping centre Santa’s grotto.

It seems to me that we need to control that heady combination of nostalgia, hedonism and sentimentality, both sacred and secular. Enjoy the memories, spend time reflecting on the tough times, and recognise that we are who we are because of these experiences. Enjoy the warm fuzzy feelings but keep rooted and know that it’s impossible to leave 2025 without the knowledge that we must take stock of the past and that the answers to the future are found in the one who came at Christmas.

Pastor Bob  
Bethel Baptist Church

**✠✠ Christmas Services 2025 ✠✠**  
**ROMAN CATHOLIC PARISH OF SACRED HEART**  
**ST. IVES PE27 5JT**



**Advent Talk**

Saturday, 13<sup>th</sup> Dec 2025 after the vigil mass at 6:00pm.

**Confessions**

Thursday, 18<sup>th</sup> Dec 2025 between 7:00 p.m to 8:00 pm.

**Christmas Masses**

**Wednesday, 24<sup>th</sup> December: Christmas Eve**

Carol service – 5:30 pm

Christmas Eve Mass -- 6.00pm

Carol Service – 9:30 pm

Mass during the Night – 10:00pm

**Christmas Day**

**25<sup>th</sup> December 2025, Thursday**

**Christmas Morning:** Masses at 9:00 am & 11:00 am

**Friday, 26<sup>th</sup> Dec 2025**

10:00 am Altar Server’s Mass (Feast of St. Stephen)

**Saturday, 27<sup>th</sup> Dec 2025**

5:00 pm – Vigil Mass (Feast of Holy Family)

After the Vigil Mass Bring & Share Parish family supper.

**Sunday, 28<sup>th</sup> Dec 2025 (Feast of the Holy Family)**

Masses at 9:00 am & 11:00 am.

**Wednesday, 31<sup>st</sup> Dec 2025**

7:30 pm Mass (Thanksgiving Mass)

**New Year’s Day Thursday 1<sup>st</sup> January 2025**

**10:00 am Mass (Solemnity of Mary, The Holy Mother of God)**

Please join us as we celebrate this joyful time and a warm welcome to all our parishioners and visitors

## Community Groups & Charities

|   |   |
|---|---|
| Swavesey Sustainability Hub             | The Sustainability Hub is a community group that offers space and support for people to realise their ideas for a more sustainable way of life.<br>Contact: <a href="mailto:rvollerthun@gmail.com">rvollerthun@gmail.com</a><br>Website: <a href="http://www.thesustainabilityhub.biz">www.thesustainabilityhub.biz</a>   |
| Sheddit!                                | Sheddit! is the community shed for Swavesey and surrounding areas. The group works on a range of projects and welcome new members who enjoy making things from wood and metal.<br>Contact: Phil Cohen 07957 422292<br>Website: <a href="https://shareborrowconnect.org/">https://shareborrowconnect.org/</a>  |
| Cam Sight                               | Cam Sight is a local charity which offers support to anyone with a visual impairment, along with their family and carers. We meet on the 4th Wednesday afternoon of each month in Bar Hill. For more information please telephone Joan in Bar Hill on 01954 200622 or Alison at Cam Sight on 01223 420033 or email <a href="mailto:alison@camsight.org.uk">alison@camsight.org.uk</a> . For more info see:-<br><a href="http://www.camsight.org.uk">www.camsight.org.uk</a>   |
| Cambridgeshire Hearing Help             | CHH is a charity that helps people with hearing loss. Volunteers service NHS hearing aids and provide batteries and they attend Swavesey quarterly at Thistle Green. Advice on any aspects of hearing loss is available at a hearing help session or by calling the office on 01223 416141,<br>E-mail: <a href="mailto:enquiries@cambridgeshirehearinghelp.org.uk">enquiries@cambridgeshirehearinghelp.org.uk</a><br>Website: <a href="http://cambridgeshirehearinghelp.org.uk">cambridgeshirehearinghelp.org.uk</a>  |
| Care Network                            | Care Network supports volunteers, encourages independence and develops good neighbour projects. We provide the Welcome Home from Hospital service across Cambridgeshire. Contact:- Care Network, 5 Broadway House, 149-151 St Neots Rd, Hardwick, Cambridge, CB23 7QJ (tel: 01954 211919).<br>Website: <a href="http://care-network.org.uk/">care-network.org.uk/</a>   |
| Compass Cafe                            | Meets every Thursday morning from 10.30 until 12.00 at Bethel Baptist Church. Contact Sue Ellington on 01954 202923 or <a href="mailto:sue.ellington@virgin.net">sue.ellington@virgin.net</a>   |
| Dog Lovers of Swavesey                  | Dog Lovers of Swavesey is a friendly group where anyone with a love for dogs is welcome with or without dog. Meetings are on the Recreation Green organised through the Facebook group at <a href="https://www.facebook.com/groups/dogloversofswavesey">https://www.facebook.com/groups/dogloversofswavesey</a> where we also exchange tips, ask for advice or have a laugh. Resources are gathered at <a href="https://dogloversofswavesey.co.uk/">https://dogloversofswavesey.co.uk/</a> . Contact: Matt at <a href="mailto:matthewyoung1@btinternet.com">matthewyoung1@btinternet.com</a> or Anita at <a href="mailto:anita.faul@outlook.com">anita.faul@outlook.com</a> "<br>Tel 01954 232791 |
| Swavesey Library                        | A volunteer run community library based in Swavesey Village College. We are able to providing a full range of library facilities being directly linked to the Cambridgeshire County Council library service. For more info see:-<br><a href="https://www.swavesey-pc.gov.uk/community/swavesey-your-library/">https://www.swavesey-pc.gov.uk/community/swavesey-your-library/</a>   |
| East Anglia's Children's Hospice (EACH) | Put your free time to good use and volunteer at East Anglia's Children's Hospice (EACH) in Milton. Volunteering at a children's hospice doesn't always mean care work and fundraising as there are also tasks such as admin and maintenance of the grounds.<br>Contact:- Clare Bates on 01223 815134,<br>Email: <a href="mailto:clare.bates@each.org.uk">clare.bates@each.org.uk</a>  |
| OWLS Community Car Scheme               | Run by DBS checked volunteers the scheme offers a door-to-door service, for medical or some social journeys, to people who are unable to access other forms of transport. Ring 07505 254363 to book a journey, find out more, or to volunteer as a driver<br>Website: <a href="https://www.swavesey-pc.gov.uk/community/owls-community-car-scheme/">https://www.swavesey-pc.gov.uk/community/owls-community-car-scheme/</a>   |

## CLUB INFORMATION

| Army Cadets UK                           | Swavesey Detachment, No 2 (Cromwell) Company, Cambridgeshire Army Cadet Force meets each Tuesday evening at the Swavesey Village College from 7 pm. New recruits are welcomed from ages 12 years (year 8) to 18 years.<br><a href="http://www.armycadets.com/county/cambridgeshire-acf/">www.armycadets.com/county/cambridgeshire-acf/</a>  |  |         |         |                       |           |  |                       |         |  |                       |            |  |                     |           |  |                      |           |  |
|--|---|--|---------|---------|-----------------------|-----------|--|-----------------------|---------|--|-----------------------|------------|--|---------------------|-----------|--|----------------------|-----------|--|
| Swavesey Five-a-Side Football Club       | Currently seeking new members for this long-established club. We play each Wednesday evening from 6:30 to 7:30pm in the new sports hall at Swavesey Village College. Enquiries to Stewart Smith (07803 050234).   |  |         |         |                       |           |  |                       |         |  |                       |            |  |                     |           |  |                      |           |  |
| Swavesey Girlguiding                     | <table border="1"> <thead> <tr> <th>Unit</th> <th>Evening</th> <th>Contact</th> </tr> </thead> <tbody> <tr> <td>1st Swavesey Rainbows</td> <td>Thursdays</td> <td><a href="mailto:caroline@overroad.co.uk">caroline@overroad.co.uk</a></td> </tr> <tr> <td>1st Swavesey Brownies</td> <td>Mondays</td> <td><a href="mailto:swaveseybrownies@outlook.com">swaveseybrownies@outlook.com</a></td> </tr> <tr> <td>2nd Swavesey Brownies</td> <td>Wednesdays</td> <td><a href="mailto:secondswaveseybrownies@outlook.com">secondswaveseybrownies@outlook.com</a></td> </tr> <tr> <td>1st Swavesey Guides</td> <td>Thursdays</td> <td><a href="mailto:swaveseyguides@gmail.com">swaveseyguides@gmail.com</a></td> </tr> <tr> <td>1st Swavesey Rangers</td> <td>Thursdays</td> <td><a href="mailto:swaveseyrangers@gmail.com">swaveseyrangers@gmail.com</a></td> </tr> </tbody> </table> | Unit   | Evening | Contact | 1st Swavesey Rainbows | Thursdays | <a href="mailto:caroline@overroad.co.uk">caroline@overroad.co.uk</a> | 1st Swavesey Brownies | Mondays | <a href="mailto:swaveseybrownies@outlook.com">swaveseybrownies@outlook.com</a> | 2nd Swavesey Brownies | Wednesdays | <a href="mailto:secondswaveseybrownies@outlook.com">secondswaveseybrownies@outlook.com</a> | 1st Swavesey Guides | Thursdays | <a href="mailto:swaveseyguides@gmail.com">swaveseyguides@gmail.com</a> | 1st Swavesey Rangers | Thursdays | <a href="mailto:swaveseyrangers@gmail.com">swaveseyrangers@gmail.com</a> |
| Unit                                     | Evening   | Contact  |         |         |                       |           |  |                       |         |  |                       |            |  |                     |           |  |                      |           |  |
| 1st Swavesey Rainbows                    | Thursdays   | <a href="mailto:caroline@overroad.co.uk">caroline@overroad.co.uk</a>                       |         |         |                       |           |  |                       |         |  |                       |            |  |                     |           |  |                      |           |  |
| 1st Swavesey Brownies                    | Mondays   | <a href="mailto:swaveseybrownies@outlook.com">swaveseybrownies@outlook.com</a>             |         |         |                       |           |  |                       |         |  |                       |            |  |                     |           |  |                      |           |  |
| 2nd Swavesey Brownies                    | Wednesdays  | <a href="mailto:secondswaveseybrownies@outlook.com">secondswaveseybrownies@outlook.com</a> |         |         |                       |           |  |                       |         |  |                       |            |  |                     |           |  |                      |           |  |
| 1st Swavesey Guides                      | Thursdays   | <a href="mailto:swaveseyguides@gmail.com">swaveseyguides@gmail.com</a>                     |         |         |                       |           |  |                       |         |  |                       |            |  |                     |           |  |                      |           |  |
| 1st Swavesey Rangers                     | Thursdays   | <a href="mailto:swaveseyrangers@gmail.com">swaveseyrangers@gmail.com</a>                   |         |         |                       |           |  |                       |         |  |                       |            |  |                     |           |  |                      |           |  |
| Swavesey Spartans                        | Swavesey Spartans ( <a href="http://swaveseyspartans.co.uk">swaveseyspartans.co.uk</a> ) is a Chartered Standard Football Club affiliated to Cambridgeshire Football Association. The club delivers football for children aged 6 and above. The club helps with the transition to open age football. Colts football ceases at the end of a player's Under 18 season. Open age football for men in Swavesey is available through Swavesey Institute FC (separate entry in this section of the Meridian). Swavesey Spartans FC have an open age football team for ladies playing league games on a Sunday. For more information about Spartans please contact Paul Clarke ( <a href="mailto:swavesey.chairperson@gmail.com">swavesey.chairperson@gmail.com</a> ) or Mrs Paula Land ( <a href="mailto:swavesey.secretary@gmail.com">swavesey.secretary@gmail.com</a> )               |  |         |         |                       |           |  |                       |         |  |                       |            |  |                     |           |  |                      |           |  |
| 1 <sup>st</sup> Swavesey Scout Group     | All sections meet at the Scout Hut on the SVC site<br><b>Beavers</b><br>Day: Thursday 18:00 to 19:00 Contact: John Pawson - Beaver Leader<br><a href="mailto:john.pawson@1stswaveseyscoutgroup.org.uk">john.pawson@1stswaveseyscoutgroup.org.uk</a><br><b>Cubs</b><br>Day: Tuesday 18:15 to 19:30 Contact: Steven Wilson - Cub Leader<br><a href="mailto:steven.wilson@1stswaveseyscoutgroup.org.uk">steven.wilson@1stswaveseyscoutgroup.org.uk</a><br><b>Scouts</b><br>Day: Wednesday 19:00 to 20:30 Contact : Marian Bentley - Scout Leader<br><a href="mailto:Marian.Bentley@1stswaveseyscoutgroup.org.uk">Marian.Bentley@1stswaveseyscoutgroup.org.uk</a><br>For any other enquiries please email <a href="mailto:info@1stswaveseyscoutgroup.org.uk">info@1stswaveseyscoutgroup.org.uk</a>  |  |         |         |                       |           |  |                       |         |  |                       |            |  |                     |           |  |                      |           |  |
| Swavesey Early Years and Playwork Centre | Swavesey Early Years and Playwork Centre are based in their own purpose-built unit on the primary school site. It comprises Early Years children (aged from 2 years and 6 Months) between 9am and 3pm (formerly Swavesey Pre School) and we provide activities and care for primary school aged children before and after school. Breakfast Club runs from 7.30 am to 9am and After School Club from 3.15pm to 6pm. For information please contact Carol Panther (Early Years and Playwork Manager) by email: <a href="mailto:eyandp@swavesey.camb.sch.uk">eyandp@swavesey.camb.sch.uk</a> or by phone (01954) 273312 Ext 2 or 07803 812221.  |  |         |         |                       |           |  |                       |         |  |                       |            |  |                     |           |  |                      |           |  |
| Swavesey Community Choir                 | If you enjoy singing and having fun then come and join Swavesey Community Choir. We meet every Wednesday in term time in Fen Drayton Village Hall, Cootes Lane, Fen Drayton from 7.45pm - 9.30pm. You don't need to be able to read music and no auditions needed, tenor and bass voices particularly welcome. For further details contact Julie Holmes <a href="mailto:julieholmes78@gmail.com">julieholmes78@gmail.com</a><br>Website: <a href="http://www.swaveseycommunitychoir.co.uk">www.swaveseycommunitychoir.co.uk</a>   |  |         |         |                       |           |  |                       |         |  |                       |            |  |                     |           |  |                      |           |  |

|                                     |   |
|-------------------------------------|---|
| British Tang Soo Do Institute       | British Tang Soo Do Institute practices the Korean martial art of Tang Soo Do. Our club training covers self defence techniques and many aspects of fitness including flexibility, coordination, conditioning, balance and discipline helping to promote a healthy lifestyle. For further information please contact Master Jeff Cockram on 07863 345681 or <a href="mailto:jeff@btsdi.co.uk">jeff@btsdi.co.uk</a><br>Or see our website: <a href="http://www.btsdi.com">www.btsdi.com</a>  |
| Swavesey Tang Soo Do Club           | Swavesey Tang Soo Do have classes on a Monday, Tuesday and Wednesday. Classes are in the primary school main hall at 6pm. The contact details are Master Louise Morton on 07919 050261 or email <a href="mailto:enquiries@swaveseytsd.co.uk">enquiries@swaveseytsd.co.uk</a> .<br>The website is <a href="http://www.swaveseytsd.co.uk">www.swaveseytsd.co.uk</a>   |
| Allotments in Swavesey              | Down Hale Road towards the windmill and on the right there are 61 plots, mostly 150 sq yds (125 m2) in area, backed up by eight water tanks. Large yields of a wide range of high quality vegetable, fruit and flower crops can be grown successfully. If you are interested in joining the waiting list contact Val Sage Tel (01954) 230853  |
| British Legion                      | For information contact:- Secretary - Angela Dye. (01954) 277453.<br>email: <a href="mailto:dyeangela0@gmail.com">dyeangela0@gmail.com</a>  |
| Swavesey Badminton Club             | Located at the Swavesey Village College Sports Centre. The Club offers a high standard of play at club nights on Tuesdays 7pm to 8pm and on Fridays from 6.30pm to 9.30pm. We play competitive badminton in the Cambridge leagues and run men's, women's and mixed teams. Contact Helen Taylor on (01954) 230997<br>Email: <a href="mailto:enquiries@swaveseybadminton.net">enquiries@swaveseybadminton.net</a><br>Website: <a href="http://www.swaveseybadminton.net">www.swaveseybadminton.net</a>  |
| Swavesey Billiards and Snooker Club | For information/membership please contact Graeme Waites (01954 230113) Email <a href="mailto:graham.waites566@btinternet.com">graham.waites566@btinternet.com</a>   |
| Swavesey Camera Club                | At Swavesey Camera Club we are proud to cater for photographers of all standards. For more information visit our website at:- <a href="http://www.swaveseycameraclub.co.uk">www.swaveseycameraclub.co.uk</a> . We meet every Thursday, 7.00 - 9.30pm, 'Carole Shaw Room, SVC. Non-members welcome - £4 charge (first visit free). For further details please ring Simon Shore (01954) 230848  |
| Swavesey Squash Club                | Swavesey Squash Club has three international standard squash courts, in our recently refurbished clubhouse, on the Swavesey Village College site. The club has a number of weekly sessions running, suitable for beginners, improvers, and more advanced players. Unlimited use of the facility from £17 a month. A welcoming and active community club with social events and opportunities for competition. Visit our website for more details or contact Ali Loke on 07776 176866/<br><a href="mailto:ali@alilokesquash.com">ali@alilokesquash.com</a> .<br><a href="http://www.swaveseysquash.com">www.swaveseysquash.com</a>                             |
| Swavesey & Over Cycling Club        | We meet regularly throughout the year, with rides most weekends and also weekdays on spring and summer evenings. As a Cycling UK affiliated club our goal is to explore a joint passion for cycling in a safe, inclusive and social way. We aim to organise events throughout the year from day & weekend rides in the UK and long weekend trips in Europe.<br>Contact: John Craven<br>Email: <a href="mailto:socccommittee@gmail.com">socccommittee@gmail.com</a><br>Facebook: <a href="https://bit.ly/3GJCKSZ">https://bit.ly/3GJCKSZ</a> SOCC or<br>Website: <a href="https://swaveseyovercc.wixsite.com/socc">https://swaveseyovercc.wixsite.com/socc</a> |

|   |  |
|---|--|
| Fireflies Netball Club                  | Friendly local club, everyone welcome, from back-to-netballers to seasoned players. We have teams playing in CDNL and Fenland Netball leagues. Training is on Tuesdays 7-8:30pm at Northstowe Secondary School. First month is free. £15 per month thereafter.<br>Contact <a href="mailto:firefliesnetballclub@gmail.com">firefliesnetballclub@gmail.com</a> for more information.   |
| Over & Willingham Cricket Club          | We have 2 open age (adult) cricket teams in the Cambridgeshire Saturday afternoon league playing 40 over cricket between the start of May and the end of August.<br>If you are interested in joining our club, please get in touch with one of the club officials, come along to one of our training sessions or approach any club member on our matchdays (Saturday's).<br>Contact Jane Reeson if you are interested.<br>email - <a href="mailto:reesonhcx46k@aol.com">reesonhcx46k@aol.com</a> ; Telephone 07768 540146;<br>or Facebook - Over and Willingham CC,<br>or Website - <a href="http://overandwillingham.play-cricket.com">overandwillingham.play-cricket.com</a> |
| Swavesey Music School                   | Meets every Saturday of term time at Swavesey Village College.<br>For further details see: <a href="http://www.swaveseymusic.co.uk/">www.swaveseymusic.co.uk/</a>  |
| Swavesey District Bridleway Association | A liaison group representing local horse riders whose main aim is to protect existing and create safe new horse riding links between all local villages. New members welcome. Regular Newsletter/ Social events calendar. Please contact Sue Rogers (01954) 232758   |
| Swavesey & District History Society     | Meet every third Tuesday in the month, 7.30pm, Carole Shaw room, SVC. Contact Carolyn Redmayne, Secretary (01954) 230037   |
| Swavesey Institute Football Club        | Swavesey Institute FC have 2 teams in the Cambs County Saturday afternoon leagues. For information about the club or if you are interested in playing open age (adult) football for the village please contact Martin Pickering on 07737 391445  |
| Linedance                               | Linedance classes held on Wednesday mornings at the Bethel Baptist Church 9-30 to 11-30 am. Beginners always welcome.<br>Contact Deborah Walker (01954) 231382<br>Email: <a href="mailto:deborahwalker105@talktalk.net">deborahwalker105@talktalk.net</a>  |
| Swavesey & Over Conservation Society    | At the moment we organise interesting walks<br>If you need a lift: Phone: Trevor Grange - 01954 230119 or Pat Miles - (01954) 780485. Guests Are Always Welcome!   |
| Swavesey & Over Tennis Club             | Swavesey & Over Tennis Club: Club nights are Mondays and Fridays, 6.30-8.30pm. We welcome new members - further information our website <a href="https://swaveseyovertennis.wixsite.com/sotc">https://swaveseyovertennis.wixsite.com/sotc</a> , or you can email us on <a href="mailto:SwaveseyOverTennis@gmail.com">SwaveseyOverTennis@gmail.com</a> , or call Steve 07393 825027 or Melanie 07453 523999.  |
| Swavesey RADSoc                         | Friendly local drama group staging two or three productions a year. New members always welcome. Contact: Nathalie Balzano: <a href="mailto:nathaliewoodward@hotmail.com">nathaliewoodward@hotmail.com</a><br>Visit our website at <a href="http://www.swaveseyradsoc.org.uk">www.swaveseyradsoc.org.uk</a>   |
| Swavesey W.I.                           | We meet every second Monday of the month at 7.30pm in the Memorial Hall. New members are always welcome to enjoy a variety of invited speakers and have a chat and cup of tea/coffee afterwards. For further information contact Margaret Guest tel (01954) 202757   |
| Women's Walking                         | Women's Walking on Mondays and Fridays at 10:00am. Meet on Market Street green. Walk for approximately one hour on pathways in and around Swavesey. A chance to exercise and chat. - Reasonably robust footwear recommended.<br>All welcome.   |

# THE MERIDIAN ADVERTISER

**December/January 2026**

## Landscaping & Garden Services

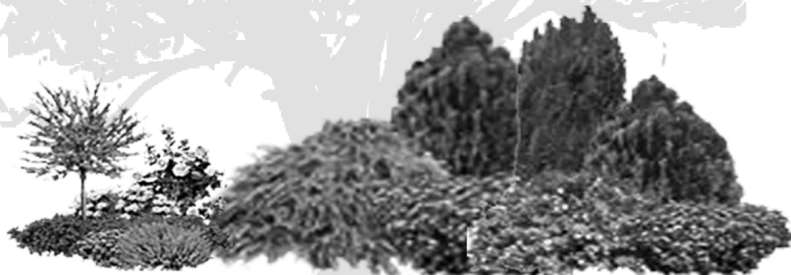
Grower & Supplier of Trees, Shrubs & Hedges



- ✘ Supply and or planting of trees, shrubs and hedges
- ✘ Cutting / Pruning of trees, shrubs and hedges.
- ✘ Land Preparation, spraying, lawn seeding and turfing
- ✘ General maintenance, clearance and repairs
- ✘ Fencing, Gates and Paving

For a FREE estimate phone :- 07786699977

or visit [www.eparish-landscaping.co.uk](http://www.eparish-landscaping.co.uk)  
or Email : [edwin@parishnet.co.uk](mailto:edwin@parishnet.co.uk)



## PAIN AND INJURY CLINIC



Live life pain-free, naturally!  
Start your journey back to better health.

### WHAT WE TREAT.

- Back Pain
- Neck Pain
- Pelvis and Hip Pain
- Headaches
- Sciatica
- Postural Problems
- Jaw Pain
- Sports Injuries
- Shoulder Injuries
- Pain during Pregnancy
- Muscle Spasms
- Mobility Issues

CHIROPRACTIC CARE | SOFT TISSUE THERAPY | REHABILITATION

[www.movefreechiropractic.co.uk](http://www.movefreechiropractic.co.uk) [info@movefreechiropractic.co.uk](mailto:info@movefreechiropractic.co.uk)

91 High Street, Longstanton, Cambridgeshire, CB24 3BS 07405426244

Made with PosterMyWall.com

Contact for  
**FREE**  
to find out if  
chiropractic is  
right for you.

## C & C BLINDS

*Specialists in Blinds | Any size | Any colour*





Vertical Blinds • Roller Blinds  
Venetian Blinds • Repairs • Roman • Pleated  
Perfect Fit • Wooden • Roof Blinds  
Awnings • Fitting Service

Free Estimates & 1 Year Guarantee

**10% OFF**  
With this  
leaflet

**Tel:** 01223 211 171 • **Mob:** 07761 262070  
**Email:** [colincoleman64@hotmail.com](mailto:colincoleman64@hotmail.com)

# RPJ SOLUTIONS

## PAINTING SOLUTIONS

### INTERIOR AND EXTERIOR

CALL TODAY FOR MORE INFORMATION  
AND TO ARRANGE A FREE QUOTE!

 RPJ Solutions

Phone: 07794 732097

Email: [ryan@rpjsolutions.co.uk](mailto:ryan@rpjsolutions.co.uk)

Web: [www.rpjsolutions.co.uk](http://www.rpjsolutions.co.uk)

# ALEX ARTHURS

## BUILDING SERVICES

ALL ASPECTS OF BRICKWORK UNDERTAKEN

EXTENSIONS • TRADITIONAL BRICKWORK • ALTERATIONS  
GARDEN WALLS • CHIMNEY REBUILDING • REPOINTING  
FIREPLACES • STONE SILLS AND THRESHOLDS

PAVING • SLABS & NATURAL STONE • BLOCK PAVING  
CONCRETING • GROUNDWORKS • FENCING • DECKING

FOR A FREE QUOTATION & ADVICE CALL ALEX ARTHURS

**01954 232050 or 07841 433652**



**wilderspin**  
GARAGE LTD

*A local family-run business*

**MOTOR  
SERVICING -  
MOT'S & HABITATION CHECKS  
ALL DONE ON SITE**



## SERVICING & REPAIRS

EXHAUSTS | BATTERIES | TYRES | CLUTCHES | BRAKES | TIMING BELTS

## M.O.T. TESTING CENTRE

CLASSES 4,5 & 7 | MOTOR HOMES | MINI BUSES  
CARS | VANS | LIGHT COMMERCIAL

**FREE**  
USE OF  
COURTESY CARS

AIR  
CONDITIONING  
SERVICING

**FREE**  
COLLECTION AND  
DELIVERY SERVICE



OAKTREE ROAD | FEN DRAYTON | CB24 4SS  
Tel: 01954 230273 | Email: [wilderspingarageltd@gmail.com](mailto:wilderspingarageltd@gmail.com)  
[www.wilderspin-garage.co.uk](http://www.wilderspin-garage.co.uk)



# Rothwell's Carpet Cleaning

## Carpet, Stone Floor, Upholstery & Rug Cleaning

*A few points that make us stand out,*

Rothwell's has been in business since 1993

We're an honest local family firm.

Our large truck mounted machines mean more cleaning & drying power for the best results possible.

Members of both the NCCA and TACCA.

We will move the furniture.

100% satisfaction or it's FREE.

*Call Oliver and Max Campbell  
for expert help today.*

**01223 832 928**

**www.Rothwells.biz**



## Achieve the future you want

**We all imagine our future differently.**

Whatever your goals, we believe there is value in taking advice from someone you trust. We will work with you to plan, grow and protect your financial future.

**Let's start a conversation.**

**James Tait**

BA (Hons) DipPFS  
Cert CII (MP & ER)

**Adviser**

07768 305151

james.tait@sjpp.co.uk

Associate Partner Practice

**St  
James's  
Place**

Willow Bay Financial Partners Ltd is an Appointed Representative of and represents only St. James's Place Wealth Management plc (which is authorised and regulated by the Financial Conduct Authority) for the purpose of advising solely on the group's wealth management products and services, more details of which are set out on the group's website [www.sjpp.co.uk/products](http://www.sjpp.co.uk/products). The 'St. James's Place Partnership' and the titles 'Partner' and 'Partner Practice' are marketing terms used to describe St. James's Place representatives.

SJP Approved 16/07/2025

SJP13570e\_DS 83 (0/24)

## Sales: Servicing Salt

- ▶ Supply & Installation Service
- ▶ Servicing & Repairs
- ▶ Drinking Water Systems
- ▶ Salt Delivery & Collection

[www.aquastream-softeners.co.uk](http://www.aquastream-softeners.co.uk)

Unit 17 Meridian, Buckingham Business Park, Anderson Road, Swavesey, Cambridge, CB24 4AE

**AQUASTREAM**  
Water Softeners limited

01954 230898



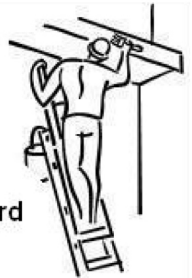
**Authorised  
Ecowater & Kinetico  
Dealership**

 **Kinetico**  
water systems

**ECOWATER**  
SYSTEMS  
  
Your Water. Perfected.



## Andy Tibbett & Sons Painting & Decorating



- \* All internal & external work carried out to a high standard
- \* Trade references can be supplied
- \* Very competitive pricing
- \* A prompt & polite service from a name you can trust

Telephone: 01954 230810

Mobile: 07717 493723

Email: [andrewtibbett@hotmail.co.uk](mailto:andrewtibbett@hotmail.co.uk)





# Ash Croft Veterinary Surgery

169 St. Neots Road,  
Hardwick, Cambridge CB23 7QJ  
Mon.–Fri. 8.30am –10.30am  
4.30pm–7.00pm  
Saturday 9.00am–11.00am  
Sunday 10.00am –11.00am  
Tel: 01954 210250

Unit 1 Pendrill Court, Ermine Street North  
Papworth Everard, Cambridge CB23 3UY  
Monday, Wednesday, Friday 11.30am–1.30pm  
Saturday 12noon–1.30pm  
Tel: 01480 831615

Laura Wood MA, VetMB, MRCVS  
Simon Shore MA, VETMB, MRCVS  
Dragan Tomovic BVSc, MRCVS  
Consultations by appointment only

## G B Builders

NO JOB TOO SMALL

**FOR ALL MAINTENANCE RENOVATIONS  
AND DIY WORK**

All general building repairs & odd jobs  
Specialist in Painting & Decorating  
Groundwork & Grass cutting

- Fencing
- Brickwork & Plastering
- Plumbing
- Driveways, Paths, Patios
- Carpentry
- Slabbing
- Roofing
- Concreting
- Tiling
- Blockpaving
- Drainage
- Guttering

Call Today  
07877 742420  
Or 01480 437511  
g.builders@yahoo.co.uk

## Swavesey Physio

**Chartered  
Physiotherapist**

**Susannah Jennings BSc (Hons)  
MCSP, HCPC, MAACP**



Musculo-Skeletal Injuries:

- Back & Neck Pain
- Muscle & Joint Pain
- Rehabilitation after Surgery
- Postural Conditions  
(including Post & Ante  
Natal)
- Mobility Difficulties

Treatments Available:

- Joint Mobilisation &  
Manipulation
- Soft Tissue Massage and  
Stretching
- Acupuncture
- Mobility Assessments
- Electrotherapy
- 1:1 Clinical Pilates
- Rehabilitation Programs

31 Thistle Green, Swavesey, Cambridge. CB24 4RJ.  
Tel: 07970 548205

Email: [susie@swaveseyphysio.co.uk](mailto:susie@swaveseyphysio.co.uk)  
Web: [www.swaveseyphysio.co.uk](http://www.swaveseyphysio.co.uk)

## F.W. COOK FUNERAL SERVICE

49 Church Street Willingham

Tel Willingham 260325

Andrew Cook Dip FD Kay Cook Dip FD MBIE

A long established family business providing a personal 24 hour service

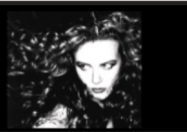
Golden Charter pre-payment funeral plans available

## COOK'S MEMORIALS

New memorials and refurbishments  
Brochures available on request

**La` Mac**

Hairdressing for all  
the family



- ◆ Friendly Service
- ◆ Traditional & up to date styling
- ◆ Fully trained in all colouring techniques
- ◆ Open Tuesday - Saturday  
(late 7.00pm Wednesday)

We aim to make your visit as pleasant as possible, with a professional and friendly atmosphere to help you relax.

If you are thinking of a change please pop in - we will be pleased to help.

☎ 01954 231 445

2a Market Street Swavesey  
Cambridgeshire CB24 4QG



**DDB Home Solutions Limited**

Making your house a home

We are a company based in Needingworth specialising in kitchen and bathroom installations and can also supply the following services;

- Carpentry and Joinery
- Plumbing
- Electrical installation – Part P registered
- Floor and wall tiling
- Less-abled Bathrooms and Wet Rooms



We are a member of the Institute of Carpenters and also the Guild of Master Craftsmen with over twenty years experience

Visit our website for more information - [www.ddbhomesolutions.co.uk](http://www.ddbhomesolutions.co.uk)  
For an informal discussion or quote please contact Darren or Jo Turnbull  
Tel: 01480 495984, or email us at [Darren@ddbhomesolutions.co.uk](mailto:Darren@ddbhomesolutions.co.uk)



ELECSA  
Part of the IET Group



**R.A. Denton**

**Painting & Decorating**

*High Quality*



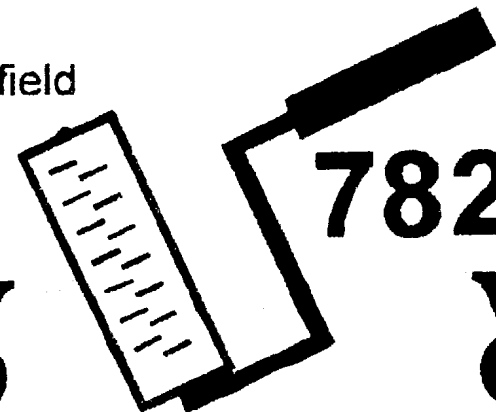
**Industrial**

**Commercial**

**Domestic**



102, Stonefield  
Bar Hill  
Cambridge  
CB3 8TB



**782472**



Struggling with Long Covid?  
 Living with chronic pain?  
 Can't get a good night's sleep?



Five Element Acupuncture

- diagnoses the root cause
- calms your nervous system
- relaxes tense muscles
- rebalances your body
- nourishes mind and spirit

Discover how working on your health with a fully qualified Five Element acupuncturist can transform your outlook.

Phone or email today for your FREE 20-minute consultation with Willingham acupuncturist Kaye Rooney  
 Lic. Ac., B.A Hons. MBAcC  
 kaye@kr-acupuncture.com  
 07593 058748



Find out more at  
[kr-acupuncture.com](http://kr-acupuncture.com)

## LIGHT REMOVALS

Small Houses to Single Items

ANY DISTANCE  
 7 Days a Week

For a Free Quote

Telephone:

01480 352220

07711 556833

[www.cambslightremovals.com](http://www.cambslightremovals.com)



Carpet, Upholstery & Fine Rug  
 Cleaning Service  
 &  
 Wood Floor Restoration

Call Today  
 01223 790796  
 or scan QRcode  
 to message us:



Please quote:  
 Swavesey Meridian Mag

"We were very satisfied with the technician and the way the carpets were cleaned. He was very polite and phoned to say he was coming and again later to let us know he would be with us shortly. Thank you for your services."

Mrs Burling

Art of Clean, Denny Lodge Business Park, Ely  
 Road, CB25 9PH  
[www.artofclean.co.uk](http://www.artofclean.co.uk)

Contact us:  
[david@rosegatefarm.co.uk](mailto:david@rosegatefarm.co.uk)  
 07922 588171



Rose and Crown Road, Swavesey

Butchery Open Fridays (8.30 am - 5.30 pm) & Saturdays (8.30 am - 1.30 pm)

[www.rosegatefarm.co.uk](http://www.rosegatefarm.co.uk)

Bespoke Butchery – butchered to suit your requirements

### BEEF

- Primarily from our own Hereford / Angus herd
- All at least 21-day aged

### LAMB

- Swavesey born and bred
- individual cuts, or ¼, ½ or whole lamb packs available

### PORK

- Bred & reared here at Rosegate Farm.
- Home-made sausages, dry-cured bacon and gammons (smoked and unsmoked)
- Cooked Ham

### CHICKEN (sourced from Diaper Poultry)

- Sutton Hoo Free Range
- St George Chicken

BBQ Meats – Burgers – Kebabs – Glazes

*See you in the butchery!*



# YOUR COMPLETE

GAS, HEATING AND PLUMBING COMPANY

- PLUMBING
- HEATING
- GAS
- BATHROOMS
- WATER SOFTENERS
- PROPERTY MAINTENANCE



**ENTIRE**  
 Keeping you gas safe and leak free

01954 204044  
[entiregroup.co.uk](http://entiregroup.co.uk)  
[service@entiregroup.co.uk](mailto:service@entiregroup.co.uk)

A distributor for Harvey Mini max water softener



# AJ Carpentry



Local, family run business who thrive on transforming project dreams into a stunning reality!

*Extensions – Conversions – New Builds – Groundworks – Bathrooms*

*Kitchens – Flooring – Electrical works – the list is endless!*

[www.ajcarpentry.co.uk](http://www.ajcarpentry.co.uk)

07989 341724 / 07812 671495

## Stamp Chiropody & Podiatry

Casey Stamp MCPod BSc (Hons)

HCPC registered CH15068



- General chiropody - nails, hard skin & corns
- Diabetic foot care
- Children's Feet - Growing pains, Verrucas, etc.
- Sporty Feet & associated injuries + pains
- Ingrowing toe nails
- Custom made Orthotics/insoles
- Dancing feet - we'll keep you on your toes
- Biomechanics & Gait analysis

**New Clients Always Welcome**

**Find us at:**

1E Highgate Farm,  
Over Rd, Willingham,  
CB24 5EU

Tel: 07807 505534

[www.stamppodiatry.co.uk](http://www.stamppodiatry.co.uk)

## Accountancy & Taxation Services



Tax Returns  
Business Accounts  
Bookkeeping  
VAT Returns  
Payroll  
Audits

L.A. Wells FCCA CTA

Chartered Certified Accountant, Chartered Tax Advisor

4 Scorney  
Fenstanton  
Huntingdon  
Cambridgeshire  
PE28 9QG

Tel: 01480 466 197



[www.lwells.co.uk](http://www.lwells.co.uk)

## M.B. FLACK

Interior & Exterior  
Painter & Decorator  
& Repairs

30+ Years Experience  
in the trade.

**Free Estimates**

Telephone

**01954 231 915**

## Vintage travel your own pool

...holidays with added peace of mind.

Your Local  
Travel  
Company

Handpicked Villas with private pools.  
Over 30 years of creating perfect holidays.  
Book with confidence.



• Greece • Spain • Lanzarote • Balearics • Portugal • Turkey • France • Italy • Croatia • Cyprus

01954 261 431  
[www.vintagetravel.co.uk](http://www.vintagetravel.co.uk)



# MAGAZINE ADVERTISING RATES

ADVERTISING RATES AS FROM FEBRUARY 2025  
For a one year inclusion i.e. six issues.

| Size         | Advertiser | Magazine |
|--------------|------------|----------|
| Full page    | £286       | £379     |
| Half page    | £149       | £214     |
| Quarter page | £100       | £132     |

The following rates are for one inclusion only and as a premium rate is already charged will be positioned in the magazine section:-

Half page one inclusion only £100

A small charge may be made for creating and amending artwork

For all advertising details please contact:  
April Martin Tel: 01954 200533 or  
Email: [adverts@swaveseymeridian.org.uk](mailto:adverts@swaveseymeridian.org.uk)



Plumbing and heating supplies  
to the trade and public



We are a local independent company supplying  
all your plumbing & heating needs, including:

**Bathroom Taps • Boilers • Bathroom Suites  
Underfloor Heating • Central Heating Radiators  
Heated Towel Rails • Showers • Kitchen Taps  
Sinks • Baths • Sanitaryware  
Plastic Plumbing Systems • Fittings**

*Do not hesitate to ring, email or visit...*



Unit 10, Norman Way Industrial Estate, Over, Cambridge CB24 5QE.  
Tel: 01954 230268. E-mail: [info@dandtsupplies.co.uk](mailto:info@dandtsupplies.co.uk) [www.dandtsupplies.co.uk](http://www.dandtsupplies.co.uk)

## NOTIFICATION OF MAJOR EVENTS

Please use this form to notify us of any major events you are organising so that we can publish the dates in the magazine and on the website at [www.swaveseymeridian.org.uk](http://www.swaveseymeridian.org.uk)

It is hoped this will avoid major events clashing on the same day. Please send to the Editor, [editor@swaveseymeridian.org.uk](mailto:editor@swaveseymeridian.org.uk)

Event \_\_\_\_\_

Location \_\_\_\_\_ Date \_\_\_\_\_ Time \_\_\_\_\_

Contact Name \_\_\_\_\_ Tel No. \_\_\_\_\_

## BIRTHDAYS, ANNIVERSARIES & SPECIAL OCCASIONS

If you would like to mark any occasion that is special to you or somebody that you know by announcing it in this magazine, please fill in the form below.

Also supply your name and contact details, and return to the Editor by the copy date.

We will endeavour to include it in our next issue.

SHORT MESSAGE:

---



---



---

| USEFUL TELEPHONE NUMBERS & WEBSITES     |                               |  |
|---|-------------------------------|--|
| Doctor's Surgery (Swavesey)             | 01954 230202                  | <a href="http://swaveseyurgery.nhs.uk/">swaveseyurgery.nhs.uk/</a>   |
| Doctor's Surgery (Over)                 | 01954 231550                  | <a href="http://oversurgery.nhs.uk/">oversurgery.nhs.uk/</a>   |
| <b>Police:</b>                          |                               | <a href="http://www.cambs.police.uk">www.cambs.police.uk</a>   |
| Emergency                               | 999                           |  |
| All Non Emergency Calls                 | 101                           |  |
| Swavesey Parish Council                 | 01954 202982                  | <a href="http://www.swavesey-pc.gov.uk">www.swavesey-pc.gov.uk</a>   |
| Swavesey Pre-school Enquires            | 01954 273312 Ext 2            | <a href="http://www.swavesey.cambs.sch.uk/page/?title=EY+%26amp%3B+P&amp;pid=59">www.swavesey.cambs.sch.uk/page/?title=EY+%26amp%3B+P&amp;pid=59</a>                         |
| Swavesey Primary School                 | 01954 273312                  | <a href="http://www.swavesey.cambs.sch.uk/">www.swavesey.cambs.sch.uk/</a>   |
| Swavesey Village College:               | 01954 230366                  | <a href="http://www.swaveseyvc.co.uk">www.swaveseyvc.co.uk</a>   |
| Community Office                        | 01954 234488                  | <a href="http://www.swaveseyvc.co.uk/community-education/">www.swaveseyvc.co.uk/community-education/</a>   |
| Swavesey Post Office                    | 01954 232311                  |  |
| <b>Cambridgeshire County Council:</b>   |                               | <a href="http://www.cambridgeshire.gov.uk">www.cambridgeshire.gov.uk</a>   |
| General Enquiries                       | 0345 045 5200                 |  |
| Library Service                         | 0345 045 5225                 | <a href="http://www.cambridgeshire.gov.uk/residents/libraries-leisure-culture/libraries">www.cambridgeshire.gov.uk/residents/libraries-leisure-culture/libraries</a>         |
| South Cambs District Council            | 01954 713000                  | <a href="http://www.scambs.gov.uk">www.scambs.gov.uk</a>   |
| <b>Electricity (UK Power Networks):</b> |                               |  |
| Emergency & Power Cut Report Line       | 0800 783 8838                 | <a href="http://www.ukpowernetworks.co.uk">www.ukpowernetworks.co.uk</a>   |
| Gas Emergencies (National Grid)         | 0800 111999                   | <a href="http://www.nationalgas.com/emergency-contacts">www.nationalgas.com/emergency-contacts</a>   |
| Water (Cambridge Water Company) Leak:   | 0800 316 7676                 | <a href="http://www.cambridge-water.co.uk">www.cambridge-water.co.uk</a>   |
| Sewage (Anglia Water) Emergency         | 03457 145 145                 | <a href="http://www.anglianwater.co.uk">www.anglianwater.co.uk</a>   |
| Environment Agency (Flood Line):        | 0800 807060                   | <a href="http://www.environment-agency.gov.uk">www.environment-agency.gov.uk</a>   |
| Samaritans                              | 116 123                       | <a href="http://www.samaritans.org">www.samaritans.org</a>   |
| Addenbrooke's Hospital:                 | 01223 245151                  | <a href="http://www.addenbrookes.org.uk">www.addenbrookes.org.uk</a>   |
| Hinchingbrooke Hospital                 | 01480 416416                  | <a href="http://www.hinchingbrooke.nhs.uk">www.hinchingbrooke.nhs.uk</a>   |
| NHS Direct                              | 111                           | <a href="http://111.nhs.uk">111.nhs.uk</a>   |
| <b>Airports + Road &amp; Rail:</b>      |                               |  |
| Local Taxi: Alpha Cars                  | 01954 232300                  | <a href="http://www.alphacarsonline.co.uk">www.alphacarsonline.co.uk</a>   |
| Gatwick                                 | 0844 892 0322                 | <a href="http://www.gatwickairport.com">www.gatwickairport.com</a>   |
| Heathrow                                | 0844 335 1801                 | <a href="http://www.heathrow.com">www.heathrow.com</a>   |
| Luton                                   | 01582 405100                  | <a href="http://www.london-luton.co.uk">www.london-luton.co.uk</a>   |
| Stansted                                | 0808 169 7031                 | <a href="http://www.stanstedairport.com">www.stanstedairport.com</a>   |
| Traveline (Bus Coach & Rail)            | 0871 200 22 33                | <a href="http://www.traveline.info">www.traveline.info</a>   |
| <b>Local Timetables:</b>                |                               |  |
| Cambridgeshire Bus Information          |                               | <a href="http://www.cambridgeshirebus.info">www.cambridgeshirebus.info</a>   |
| Stagecoach                              | 01223 433250<br>0345 241 8000 | <a href="http://www.stagecoachbus.com">www.stagecoachbus.com</a>   |
| National Express Coaches                | 03717 81 81 81                | <a href="http://www.nationalexpress.com">www.nationalexpress.com</a>   |
| Whippet Coaches                         | 01954 230011                  | <a href="http://www.go-whippet.co.uk">www.go-whippet.co.uk</a>   |
| National Rail                           | 03457 48 49 50                | <a href="http://www.nationalrail.co.uk">www.nationalrail.co.uk</a>   |
| <b>Veterinary Practices:</b>            |                               |  |
| Village Vet (Longstanton)               | 01954 780027                  | <a href="http://www.villagevet.co.uk">www.villagevet.co.uk</a>   |
| Ash Croft (Hardwick)                    | 01954 210250                  | <a href="http://www.ashcroftvet.co.uk">www.ashcroftvet.co.uk</a>   |
| Vets For Pets (Bar Hill)                | 01223 243535                  | <a href="http://www.vets4pets.com/practices/vets-in-cambridge/vets4pets-cambridge-bar-hill/">www.vets4pets.com/practices/vets-in-cambridge/vets4pets-cambridge-bar-hill/</a> |



# Join Us!

## Meet and greet the community wardens!



 The Bethel Baptist Church Swavesey

 Tuesday 16<sup>th</sup> December  1:00 pm - 4:00 pm

### For a festive celebration and community gathering including:

- Chance to chat with others in the community
- Live entertainment
- Raffle (£1.00 per strip)
- Refreshments
- Christmas jumper competition





# Christmas Carols

SAVE THE DATE!

5:00PM- 7:30PM  
MARKET STREET

Saturday 13th December

CAROLS WITH A LIVE BRASS BAND

MULLED WINE & MINCE PIES

DRESS UP AND JOIN THE NATIVITY

CHRISTMAS FETE STALLS

CLO-HO-HO-SING WITH A VISIT FROM SOMEONE SPECIAL

TOMBOLA AND SO MUCH MORE!



Sponsor opportunities available, contact [swaveseyvillagecarols@gmail.com](mailto:swaveseyvillagecarols@gmail.com)