

# THE MERIDIAN SWAVESEY



No. 219 April/May 2026

## Swavesey Community Warden Service

Do you or a loved one need support to live independently at home?

### How can we help

Wardens assist older people to continue to live independently at home by providing contact and support, either by a personal visit or telephone call.

You will be entitled to a two week free trial

### Contact Us



07812 496004



wardens@ageukcap.org.uk



www.ageukcap.org.uk



## EDITORIAL

I am really sorry to have to say that the Swavesey Meridian Magazine will be closing down at the end of April. Owing to 'administrative difficulties' we are unable to realise money from the adverts and although the GoFundMe income has kept us going for two issues, after this issue there will no funds to continue with the printed magazine or the website. Note, when the website shuts down so will all the (---@swaveseymeridian.org.uk) email addresses. I have set up a Google email at [swavesey.meridian@gmail.com](mailto:swavesey.meridian@gmail.com) should you wish to contact me regarding the Swavesey Meridian Magazine.

There are now only four active members of the team i.e. Myself – Production Manager and reluctant Acting Deputy Editor, the Distribution Manager and his team of distributors and two Proof Readers. I wish to thank all those who have been part of the team.

If anyone wishes to set up a new team to continue with a village magazine for Swavesey then let me know as there is a lot of information that can be passed on and some of the previous team may be willing to assist or even join a new team.

Regards

Alan Morris

Acting Deputy Editor – Swavesey Meridian Magazine

[swavesey.meridian@gmail.com](mailto:swavesey.meridian@gmail.com)

### IN THIS ISSUE ...

Front Cover - By Peter Morris	page 1
Community Warden Service Poster	page 2
Editorial	page 3
Meridian Committee	page 4
Major Events List	page 5
Dates for your diary and forthcoming events	page 6
Club Reports	page 8-13
Miscellany	page 15-20
Medical News	page 21
School Information	page 22-24
Parish and County news	page 25-29
Churches	page 29-34
Community Groups & Charities table	page 35
Club Information	page 36-38
Advertiser	Page 39-54
Advert Costs, Major Events & Birthday forms	Page 53-54
Useful Telephone Numbers	page 55
Family History Show Poster	page 56

## MERIDIAN COMMITTEE

Editor:		
Treasurer		
Production:	Alan Morris	Tel: 01954 202664
Advertising:	(See adverts@ below)	
Distribution	Neil Jordison	Tel: 01954 204390
Proofreading	Alison Lucas	Tel: 01954 232984
Proofreading	April Martin	
Website:	Alan Morris <a href="http://www.swaveseymeridian.org.uk">www.swaveseymeridian.org.uk</a>	Tel: 01954 202664
Emails and Website (only active until end of April)	Default Email after end of April <a href="mailto:swavesey.meridian@gmail.com">swavesey.meridian@gmail.com</a>	
	<a href="mailto:editor@swaveseymeridian.org.uk">editor@swaveseymeridian.org.uk</a>	
	<a href="mailto:adverts@swaveseymeridian.org.uk">adverts@swaveseymeridian.org.uk</a>	
	<a href="mailto:webmaster@swaveseymeridian.org.uk">webmaster@swaveseymeridian.org.uk</a>	
	<a href="mailto:complaints@swaveseymeridian.org.uk">complaints@swaveseymeridian.org.uk</a>	
	<a href="mailto:distribution@swaveseymeridian.org.uk">distribution@swaveseymeridian.org.uk</a>	

SUMMIT



# LANDSCAPES

PAVING - DRIVEWAYS - BRICKWORK  
CARPENTRY - GROUNDWORKS



[www.landscapingpaving.co.uk](http://www.landscapingpaving.co.uk)  
PHONE: 01223-929394

## Major Events List

This list is intended to avoid major events clashing on the same day. It will only work if we are advised of all such events, so please let us know as soon as you can confirm the details.

A form is available at the back of this magazine. We will list them in this section of the Magazine and also on our website at:- [www.swaveseymeridian.org.uk](http://www.swaveseymeridian.org.uk)

Wednesday 15 April	Parish Council	Annual Parish Meeting - 7.00pm Memorial Hall
Saturday 16 May	St Andrews	10:00: Plant Sale
Sunday 21 June	Spartans Football	Spartans Day
Saturday 27 June	St Andrews	2:00 – 4:00pm: Teddy Bear Zip Wire
Saturday 27 June	Community Orchard	Swavesey Community Orchard BioBlitz
Friday 10 July	The Pantaloons Outdoor Theatre	Sherlock Homes and the Hound of the Baskervilles 7pm at Market st Green - Contact Simon Shore Mob. 07711 485114 Email <a href="mailto:simonshore99@gmail.com">simonshore99@gmail.com</a>
Friday 17 July	Stuart Faben - 07887 906982	Beer & Bubbles - 2.30pm at Swavesey Pavilion – The Green
Saturday 18 July	Stuart Faben - 07887 906982	Beer & Bubbles - 2.30pm at Swavesey Pavilion – The Green

1

# DATES FOR YOUR DIARY

1

<b>March</b>		
Saturday 28	St Andrews	Easter Fair with Easter Egg Tombola and Easter Egg Hunt
Monday 30	Refuse Collection	Black Bin Collection (Note Monday 4 days early)
<b>April</b>		
Friday 10	Refuse Collection	Blue Bin Collection
Wednesday 15	Parish Council	Annual Parish Meeting - 7.00pm Memorial Hall
Friday 17	Refuse Collection	Black Bin Collection
Friday 24	Refuse Collection	Blue Bin Collection
Monday 27	Parish Council	Full Council Meeting
<b>May</b>		
Friday 1	Refuse Collection	Black Bin Collection
Friday 8	Refuse Collection	Blue Bin Collection
Friday 15	Refuse Collection	Black Bin Collection
Saturday 16	St Andrews	10:00: Plant Sale
Monday 18	Parish Council	Full Council Meeting
Friday 22	Refuse Collection	Blue Bin Collection
Friday 29	Refuse Collection	Black Bin Collection
<b>June</b>		
Friday 5	Refuse Collection	Blue Bin Collection

## CHIMNEY SWEEP

### J. L. Wight

City & Guilds Qualified

Advice given /  
Problems solved



Certificates issued

Fully Insured



HETAS registered

**01954 253315**

www.camsweep.co.uk  
26 Cow Lane, Rampton

## ALAN'S CARPETS

**Carpets and Vinyl  
Supplied and Fitted**

We have been in the carpet trade  
for over 47 Years!

Samples To Your Home

Measure

Quote

Express delivery & fitting included

Phone 07790 681317

or

07790 544250

## JASON KIRBY LTD

EXPERT DECORATORS

All Aspects of Internal & External Decorating  
Period, Residential & Commercial Properties  
Wallpaper & Mural Install  
Kitchen Cabinet & Furniture Re-Sprays  
Floor Sanding & Restoration  
Plastering, Coving & Artex  
City & Guilds, NVQ Qualified  
For Service, Quality & Reliability



☎ 01954 211775

🌐 jasonkirbyltd.co.uk

## R. A. Miller

**Plumbing and Domestic Heating**

Fenside, 71 Willingham Road, Over  
Cambridge CB24 5PE

Tel: 01954 203277 Mob: 07831 853885

Email: robert.miller@ntlworld.com

**All plumbing work undertaken**

- » New boiler replacement and installation with free quotation.
- » GAS boiler and GAS fire servicing  
Landlord Certificates.
- » Heating problems - Diagnosis  
and rectification.
- » General plumbing - taps, washers,  
pipework, showers, etc.
- » Full and partial Bathroom installation work.

For a reliable and professional service

Robert Miller MCIPHE RP



Office 01954 203 277  
Mobile 07831 853 885



# CLUB REPORTS

## ⚽ Volunteer Treasurer Needed – Help Support Our Grassroots Team! ⚽

We're looking for someone to help us as Club Treasurer.



FA rules dictate that for us to register as a club next season, we must have a treasurer in place, so it's imperative we fill this role if we want the club to continue.

It's a light-touch role and a great way to support the kids and the club behind the scenes.

What's involved?

- Looking after the club bank account
- Tracking subs and allocating transactions
- Paying expenses and invoices
- Attending a short monthly committee meeting
- Helping out at fundraising events
- Year-end FA accounts (support available if needed)

🕒 Just a few hours a month

🇬🇧 No finance background required

If you're comfortable with online banking and basic excel and want to give something back to Spartans, we'd love to hear from you. Please contact us via our Facebook page, website or email [swavesey.treasurer@gmail.com](mailto:swavesey.treasurer@gmail.com) for more information

It's almost inconceivable that whilst looking out the window on a very drab, cold and wet early February day, that our season will be pretty much wrapped up by the time you're reading this. It's perhaps even more inconceivable that our minds will then turn to organising our annual Spartans Day celebration on Sunday 21<sup>st</sup> June!

Frustratingly, we are still unable to use the 11 a side pitch on Swavesey green. Remedial works remain ongoing and whilst the start of the year has been very wet, it really is what the pitch needs. It would be great to report back next time that both we and the Swavesey Institute adult teams have been able to fulfil a few fixtures back on home turf.

In more positive news, we have been able to fulfil mini league matches on both the 5 and 7 a side pitches, so football has partially come home!!!

Across the whole club our various teams are holding their own in their respective leagues. With 12 competitive teams, you would expect mixed success, but we remain proud of every single player who pulls on the Swavesey Spartans shirt.

Talking of shirts, the club is always looking for sponsorship for our various teams. The club doesn't attract the revenue to provide every team with new kit on a regular basis and must rely on parent donations or external sponsorship. If you want the opportunity to have your company logo proudly displayed on our shirts, please contact us via our website for more details.

We're still looking for players to join us at U6, U14 and our Ladies team. You may or may not know that we also have an affiliated walking football team. The team meet on Wednesday night at 7:30pm for an hour, so if your regular football days are behind you or your knees, ankles, hips, back etc have given up the ghost, this may be the perfect way to get your football fix. Again, please check our website for details.

**One Club. All Voices. United Through Football.**



Would you like to grow your own fresh fruit & vegetables?

**The waiting list isn't that long**

**Hale Road Allotments**

Contact Val on 01954 230853 for more information

## FLOOR COVERINGS

Cambridgeshire's largest flooring showroom est. 1996

- ◆ Luxury Vinyl Tiles (LVT)
- Laminate - Hardwood & Natural
- Over 3500 Carpet samples
- Cushion Vinyl
- ◆
- FREE no obligation quotes.
- Fitted by fully employed craftsmen with over 100 years experience.
- ◆

**01223 233233**

**www.floor-coverings.net**

◆

**Showroom:**  
Unit 31-32 Dry Drayton Industries, Scotland Road,  
Dry Drayton, Cambridge CB238AT  
Open: Mon - Sat 9-5



Scan to see our showroom



# PEST PROBLEM?

Family firm since 1974

## LOCAL QUALITY SERVICE

pest control/prevention/  
emergencies/contracts/quotations/  
birds/rodents/insects/more...

t: 01954 230708  
m: 07789 502556  
w: [www.drepestcontrol.co.uk](http://www.drepestcontrol.co.uk)  
e: [info@drepestcontrol.co.uk](mailto:info@drepestcontrol.co.uk)




19, WALLMANS LANE  
CAMBRIDGE  
CB24 4QY

## Swavesey & District History Society

**January meeting.** Thirty-five attended a talk on “The Young Charles Darwin in Cambridge” by Murray Jacobs from Linton. Darwin’s mother was part of the Wedgewood Pottery family and his father was a successful doctor. Charles attended Shrewsbury School as a boarder but hated it and was eventually removed as a failure. Aged 15 his father sent him to Edinburgh University, with his brother Erasmus, to study medicine but Darwin felt queasy at the sight of blood and he left Edinburgh without taking a degree. His father, anxious that he did not become idle, insisted that Darwin take up clerical studies in Cambridge. His name was listed in the admissions book at Christ’s College in October 1827 but after spending time being tutored on his forgotten Greek, he eventually entered Christ’s in January 1828. All the college rooms were full so Darwin took lodgings over the tobacconist’s in Sidney-street, now occupied by Boot’s. A blue plaque under the first-floor windows of Boot’s commemorates his stay there. Darwin was content at the thought of becoming a country clergyman since this would provide the freedom required to pursue his growing scientific interests. While at Christ’s Darwin became an avid beetle collector. He had a special six-drawer cabinet built to house his collection. He decorated his room with eighteenth-century engravings of master paintings and was a fan of Shakespeare. He enjoyed riding, visiting Kings College chapel and participating in the “Glutton Club”. He also spent much time shooting. Darwin became irreversibly devoted to science at Cambridge. His beetles were more than a hobby and his botany and entomology work under his mentor, Professor Henslow, prepared him for a life in science. Shortly afterwards he was taught the rudiments of geology by Professor Sedgwick. It was Henslow who passed on the suggestion to Darwin to accompany Captain Robert Fitzroy on board the voyage of HMS *Beagle* as naturalist and gentleman companion. He sat his BA exam in January 1831 and was astonished to be ranked 10th out of 178 candidates.

His father was strongly against him going on the *Beagle* voyage and progress was not easy since it seems he was the fourth choice of naturalist for the journey but on 27 December 1831 he finally set sail on *The Beagle* and his work thereafter revolutionised the life sciences. After a heart attack Charles Darwin died aged 73 in April 1882 and in due course was buried in Westminster Abbey.

**February meeting.** The Real Basil Brown: from Rickingham to Sutton Hoo. Sarah Doig, herself from Rickingham in mid Suffolk, spoke to 38 attendees. Basil was a modest man and was little known outside his local area until firstly The National Trust took over the care of the Sutton Hoo estate, including the Anglo-Saxon burial mounds, in 1998 and secondly the Netflix film “The Dig” was released in 2021. He undertook many archaeological digs throughout his life and he put much effort into making detailed records of each one. Sarah spent nearly five years researching over 100 of his notebooks, with his scribbled writing, and numerous sketches. He also took many photographs but had a habit of cutting people’s heads off. Thirty-five of his desk diaries and several of his scientific documents still exist. In 1893, aged 5, he started at the local school in Rickingham. He taught himself astronomy and gradually his interests settled on archaeology by day and astronomy by night. He left school at 13 and, to

earn a living, went to work on the local farm where his father was employed but he kept up evening classes and gained knowledge in many subjects. He spent WWI at the farm having been assessed as medically unfit but the details are unknown. Soon after the war he met his wife, Dorothy. They married in 1923 and lived with Basil’s parents at Church Farm. His first publication was on astronomy in 1932 and also in 1932 he took on the tenancy of Church Farm. He was an inadequate farmer and by 1935 he was an odd job man living in a rented part of the local schoolhouse. From the mid-1930s he became better known as an archaeological expert. In 1934 he discovered Roman kilns at a major site at Foxledge Common near Rickingham. Then he discovered and took 3 years to excavate a Roman villa at Stanton Chare. He met Guy Maynard, Curator of Ipswich Museum in 1934 and was taken on as assistant archaeologist.

On 20 June 1938 when aged 50 he first arrived at Sutton Hoo to investigate several large mounds. Maynard had negotiated for him to be employed by the helpful estate owner, Mrs Edith Pretty, at 30 shillings per week plus free accommodation with Mrs Pretty’s chauffeur. By early July, assisted by two of Mrs Pretty’s labourers, he had found iron rivets, iron bands and very fine pieces of glass from the Anglo-Saxon period which Basil recognised as an important ship burial. During WW2 he was a special constable, a member of the Observer Corps and worked in the NAAFI in Bury St Edmunds. He continued as a casual archaeologist for Ipswich Museum without holding a permanent job. He spent much time teaching history and archaeology to children in local schools. Although Dorothy and Basil had no children, they had many godchildren. He died at the age of 89 on 12 March 1977. In May 2023 a blue plaque was installed in his honour in Rickingham.

### Selwyn’s Alphanumeric Quiz. Part 6.

Back to the verbal numbers quiz because many readers find it more entertaining than the pop groups quiz. Example 1: 18 H on a GC. 18 Holes on a Golf Course. Example 2: 23 R C. H of T H. 23 Railway Cuttings. Home of Tony Hancock

1	15	M on a D M C	6	3	B on a B T
2	1	W on a U	7	7	D S
3	2	W on a B	8	7	W of the W
4	147	M B in S	9	360	D in a C
5	22	B on a S T	10	12	F K on a P C K

You will find the answers to this puzzle on page 17



## Swavesey WI News

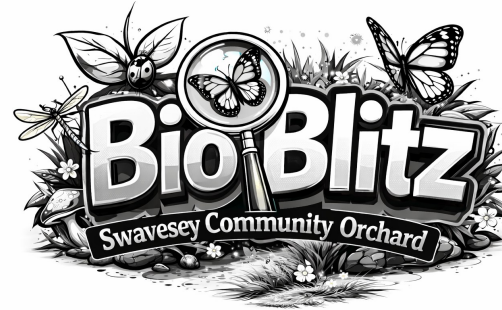
In January, members enjoyed a "Quiz with Fizz". Questions were set by Leigh Clements and Carole Pook. A fun and chatty evening to start off 2026 for our WI.

In February, Amanda Sutherland a very talented costume designer returned to visit us with another one of her inspiring talks and presentation of her creative work. She is multi-talented and she brought so many examples of her designer creations for us to view and buy. Her talk this time mainly concentrated on how she re-works clothing to create new outfits. Lots of ideas for us all to take on board!

We look forward to our AGM in April and a new programme for the year ahead.

You can find us hosting Compass Cafe on the 4th Thursday of the month, do pop along for a chat, coffee and delicious cakes.

To find out more about your local WI, please contact the following:  
Glesny Sheppard 01954 201731/Deirdre Burgess 01954 230897.



**Saturday 27<sup>th</sup> June 2026**

A BioBlitz is an event in which volunteers work together in small groups to find and identify as many species of plants, animals, birds, fungi, and other organisms as possible.

Come for an hour or stay all day—bring along a picnic

**A free fun and informative experience for budding ecologists young and old**

**A BioBlitz can be a great hands-on way to interact with nature. You don't need to be an expert. We will provide guides and you can use the iNaturalist app on your smartphone to photograph and identify the species you find. Experts will also be on hand to help. The iNaturalist data will be collated to create a biodiversity map of the orchard.**



The Complete Gas Heating and Plumbing Company

**Plumbing • Heating • Gas  
Bathrooms • Water Softeners  
Property Maintenance**

**Tel: 01954 204044 • Web: [www.entiregroup.co.uk](http://www.entiregroup.co.uk)  
Email: [service@entiregroup.co.uk](mailto:service@entiregroup.co.uk)**

- Activities and habitats will include:
- Early morning dawn chorus
- Pond dipping
- Moth overnight traps
- Hedgerows
- Orchard fruit trees
- Grasses and flowers
- Evening bat and bird walk
- Carpet refugia (carpet squares)

We hope to have pond dipping nets, butterfly nets, bat detector, moth traps, binoculars, hand lenses, microscope(s), wildlife cameras and aspirators for use or for demonstration on the day. If you can offer any equipment please get in touch.

The free Merlin app can be used on a smartphone to record and identify song birds

For more information on how you can be part of this event please contact Glyn Jones [gj@2gsc.net](mailto:gj@2gsc.net) 07977 907622



**HEMINGFORD**  
ARB

PROFESSIONAL TREE SURGEON

- ⌘ Felling/sectional felling
- ⌘ Crown reduction/thinning
- ⌘ Pollarding
- ⌘ Shaping
- ⌘ Hedge trimming
- ⌘ Stump grinding
- ⌘ Firewood for sale
- ⌘ Free quotation

All aspects of garden and tree work covered.  
NPTC Qualified. Fully insured.

Tel: 01480 463674  
Mob: 07876 521605  
Email: hemingfordarb2016@gmail.com




## Paying too much for your glasses?

### Save Money - Buy Direct!

**Visit our factory shop to see our fabulous range of Discount Prescription Eyewear**

- Hundreds of frames to choose from, including designer frames from Ray-Ban, Polo Ralph Lauren, Oakley, PRADA, Ted Baker and Versace
- Specialists in high and complex prescriptions

- Same-day or next-day service available\*
- Save up to 75%
- Huge range of designer sunglasses
- Full range of sports eyewear

Official stockists \* subject to prescription and availability








**We are open 9am to 5pm Monday to Friday, and 9am to 1pm Saturday**



**ALL EYES**  
SPECTACLE MAKERS  
SINCE 1987

Call us **01954 231545** Visit our website **www.all-eyes.co.uk**  
20 Norman Way Industrial Park, Over, Cambridge CB24 5QE

# MISCELLANY

## Swavesey Library has a new home!



*Do come and visit our lovely new library. Follow the signs at the front of Swavesey Village College by the mini roundabout.*

*Opening times are:  
Tuesday afternoons 3.30pm - 5.30pm, Wednesday evenings 5pm – 7pm and Saturday mornings 10 – 12 noon.*

*New for 2026 –*

- *Theme months*
- *Lego morning – Saturday 21<sup>st</sup> February*
- *Easter event – Saturday 4<sup>th</sup> April*

*Hundreds of childrens' (picture books – young adults) books to borrow.*

*Order and return books from any Cambridgeshire Library.*

*Not a member? It's easy to join online or at the library. Swavesey Library is run by volunteers. Could you spare a couple of hours a month to join the team?*

*We look forward to welcoming you and your family*

*For further information – [www.swavesey-pc.gov.uk/community/swavesey-your-library/](http://www.swavesey-pc.gov.uk/community/swavesey-your-library/) Swavesey Village Life on Facebook*

*or contact: Catherine 01954 232536 - evenings or Lorraine 01954 232478*

Visit our truly stunning display gardens ...



Probably the largest display centre in the UK, selling directly to trade and the general public

Bannold are one of the UK's largest independent suppliers of natural hard landscaping materials. We stock natural products sourced directly from the UK and around the world enabling Bannold to offer premium products at the most competitive rates to trade and the general public.

- Natural Paving • Setts and Paviours • Stone Walling
- Decorative Gravels • Rockery • Boulders • Waterfeatures
- Topsoils • Soil Improvers • Bark Mulches • Sands
- Hardcore and Cements



Freephone: 0500 012231  
or 01954 231666

Capability Barns  
Huntingdon Road  
Fen Drayton  
Cambridge CB24 4SD

Opening Times:  
Mon-Fri 07.30 till 5.00  
Saturdays 09.00 till 1.00

[www.bannold.co.uk](http://www.bannold.co.uk)



Answers to Selwyn's "Pop Groups Over the Decades" on page 11

1	15	M on a D M C	15 Men on a Dead Man's Chest
2	1	W on a U	1 Wheel on a Unicycle
3	2	W on a B	2 Wheels on a Bicycle
4	147	M B in S	147 Maximum Break in Snooker
5	22	B on a S T	22 Balls on a Snooker Table
6	3	B on a B T	3 Balls on a Billiard Table
7	7	D S	7 Deadly Sins
8	7	W of the W	7 Wonders of the World
9	360	D in a C	360 Degrees in a Circle
10	12	F K on a PC K	12 F Keys on a PC Keyboard

Quality Bespoke Secure Storage

Space for all your storage needs

Easy to open & fast to access. High security with PIN codes, HD CCTV cameras & individual room alarms. Choose as little or as much space as you really need, for any length of stay, with no long term commitment. Clean, dry, ventilated & condensation free. Friendly & helpful service with packaging available. Open to customers everyday from 7am to 9pm. Viewings arranged by appointment.



Located at Manor Farm, Graveley, PE19 6PH. Mention SMM22 to receive £5 discount on your first month of storage room rental.

• Home • Document • Commercial



[www.morespacestorage.co.uk](http://www.morespacestorage.co.uk)

Call 01480 830130

# Compass Café

"Encompasses the community"

All are welcome on Thursdays  
10:30am until 12 noon  
At Bethel Baptist Church



Our cakes are home-made,  
our coffee and sugar are Fairtrade,  
our tea bags are plastic-free.



Priced to be affordable:  
Tea/coffee/hot chocolate £1 per mug  
and Cakes £1.50 per large slice  
Squash is free

Please use the side door to enter, the front and far side doors  
have a ramp for wheelchair users and pushchairs, and there is  
a carpet and toys for pre-school age customers.

Compass Café is run as a community event, a place to meet  
and chat. Your hosts are a group from one of:  
Bethel Baptist Church, Girlguiding Units in Swavesey,  
Swavesey Primary School PTA, St Andrew's Church  
and Swavesey Women's Institute.

**When there is a 5th Thursday in the month other groups  
are invited to run the café to fundraise. Please get in touch with  
Sue Ellington if you would like to know more.  
sue.ellington@virgin.net or phone 07774 146331  
Future 5th Thursday dates available in 2026: 30th Jul, 29th Oct**

Room for plenty more paws!

Vets  
for  
Pets  
Bar Hill

Your locally  
owned  
vets on  
Viking Way,  
Bar Hill

Cats

Find out more about us

**Celebrating  
almost one  
year on the  
block!**

Phone: 01223 243535  
whatsapp: 07360 493 944  
Email: barhill@vetsforpets.com

Shh...If you quote  
"Swavesey meridian" you  
could get £30 off our  
Complete Care plans

## Ben Suckling

University has always been as much about life-enhancing experiences as obtaining a qualification and former Swavesey Village College pupil Ben Suckling will long remember his boxing match on Leeds University's second Wilder Student Fight Night both for getting the win while raising a substantial amount for charity.

"We're mainly novice boxers," said Ben, 20, a third-year accountancy student at the University of Leeds. "My sister was involved in Wilder fight night at Loughborough a couple of years ago and it was an amazing experience for her, so it was a given that I'd be involved. It was a fantastic experience for me too. I'm not aggressive by nature but I've always like watching combat sports. Six weeks of training at a local Leeds gym was hard. The whole experience opened my eyes to just how tough and courageous boxers are. This was without doubt the most courageous thing I've ever done. I learnt a lot about myself."



"I'm delighted to have raised £715 for The Oddballs Foundation whose purpose is to raise awareness of testicular cancer which sadly affects many young men. They're the main charity partner for Wilder Fight Night." Organiser Sal Sinawi, also known as Wilder, said "Ben is to be congratulated on his fundraising and for his skill and courage displayed in the ring. We began our fundraising fight nights in Durham in 2021. Since then, we've raised over £700,000 for various charity partners including £24,000 at two Leeds events in 2025 including Ben's."

"I'm loving my time in Leeds,' enthused Ben. "I chose to study at the University of Leeds because it enjoys such a high-quality reputation and I'm enjoying my time in a large northern city with a great social vibe and that's easy to get around. I don't intend to box again but I might well continue with the training as this will help me maintain fitness when playing football for the University of Leeds team."

To find out more visit [www.wilderfightnight.com](http://www.wilderfightnight.com) and <https://theoddballsfoundation.com/> for further information about Oddballs.

## Doctors Surgeries

### Swavesey Surgery

(01954) 230202

Out of hours 111

Website:- [www.swaveseyurgery.nhs.uk](http://www.swaveseyurgery.nhs.uk)

Information & updates on facebook page

### Over Surgery

(01954) 231550

Out of hours 111

Website:- [www.oversurgery.nhs.uk](http://www.oversurgery.nhs.uk)

Information & updates on facebook page

### Longstanton

(01954) 207600

Out of hours 111

Website:-[www.willinghammedicalpractice.nhs.uk](http://www.willinghammedicalpractice.nhs.uk)

See our website at [www.swaveseymeridian.org.uk](http://www.swaveseymeridian.org.uk)

for the full and latest surgery newsletters. Ed

### Bar Hill Surgery

(01954) 780442

Out of hours (01954) 780442 -

call will automatically be diverted

Website:- [www.maplebarhill.co.uk](http://www.maplebarhill.co.uk)

### Fenstanton

7E High Street, Fenstanton

01480 461873

Out of hours 111

Website:- [www.riverportmedicalpractice.nhs.uk/](http://www.riverportmedicalpractice.nhs.uk/location/fenstanton/)

[location/fenstanton/](http://www.riverportmedicalpractice.nhs.uk/location/fenstanton/)

# HOCKEYS

ESTABLISHED 1885



**Thinking of a move?** We are happy to offer you a free, no obligation valuation of your property.



Call our Cambridge office for a free valuation  
(01223) 356054



Call our Willingham office for a free valuation  
(01954) 260940

## SCHOOLS INFORMATION

### Swavesey Primary School Early Years and Playwork Centre Wraparound Care and Early Years Provision - Mon to Fri - term-time

Registration Fee £15 per family for using Breakfast and/or After School Club

#### Breakfast Club 7.30 am - 8.55 am

3+ year olds to Year 6 children: £6.50 per child per session

#### After School Club 3.15 pm to 6.00 pm

For Reception to Year 6 children: £13 per child, family rate £12 per child

#### Early Years 9.00 am to 3.00 pm (full day) or morning (9-12/1) or afternoon (12-3)

For 2½ year olds to 4 year olds

Places for funded children up to 30 hours per week

Charged sessions:-

3-4 year olds £17.25 half-day and £34.50 full-day.

2 year olds £24.45 Mornings only

£5.75 for lunch hour (12-1)

For more information and to register:-

[www.swavesey.cambs.sch.uk](http://www.swavesey.cambs.sch.uk) (Select EY & P)

[eyandp@swavesey.cambs.sch.uk](mailto:eyandp@swavesey.cambs.sch.uk)



9.30 am – 10.15 am  
Music Theory classes for ALL

10.15 am – 11.00 am  
Little Rockets for 3-9 yrs  
Join the Band & Find your voice!

10.15 am – 11.00 am  
The BIG Sing!  
(aka Choir/Sing up – 7 – 77yrs! ALL AGES)



11:00 am – 12:00 pm  
The BIG Rock School for  
Drummers, vocalists or guitarists  
with some experience or have  
been playing for some time aged  
10 yrs+



11am – 12pm  
The BIG Orchestra!  
An opportunity for children,  
parents, adults & community in  
an orchestra together.  
Everyone welcome... beginners  
to experienced players!

# Swavesey Music School

[admin@swaveseymusic.co.uk](mailto:admin@swaveseymusic.co.uk)  
Swavesey Village College CB24 4RS

## Adult Education Classes at Swavesey Village College



New community evening classes are now available to book via our website.

Try something new for 2026!

From Yoga to Badminton, Language classes for all levels and many art classes to choose from such as mosaics & knitting.

Courses range from 4-10 weeks, starting from just £36.



[www.swaveseyvc.co.uk/general-courses/](http://www.swaveseyvc.co.uk/general-courses/)

## Junior netball at Swavesey VC

Develop your skills and build confidence with our fun and inclusive sessions.

New venue!

Easter fun!

**Holiday netball club**  
Wed 8 April, 10-3.30

Age 8 to 15  
£30, £24 for siblings.

Book at:  
[gkfit.co.uk/holiday](http://gkfit.co.uk/holiday)

Book by 31 March to get 20% off!  
Use code: TWEET

**Tuesday netball club**  
From 14 April

4.15: Years 4, 5 & 6  
5.15: Years 7, 8 & 9  
£6.25, £5 for siblings.

Book at:  
[gkfit.co.uk/netball](http://gkfit.co.uk/netball)



Visit [gkfit.co.uk](http://gkfit.co.uk) for more info or email [info@gkfit.co.uk](mailto:info@gkfit.co.uk)



**We help all girls know they can do anything.**

We show girls from 4 to 18 a world of possibilities big and small. One where every girl can laugh and learn and be herself. Girlguiding is what each girl wants it to be. It might be the thrill of doing something for the first time. Songs around a campfire. The buzz of getting a new badge. Coming home exhausted and full of stories. It's a space where she can be herself, get creative, explore, and most of all have fun.

## How can I get involved?

You choose the volunteer role that matches your skills and time available. You can be a leader, a helper, a treasurer, a fundraiser, an administrator, a trainer, the list goes on and on...

"We're awesome as we help girls to thrive and grow because we are all part of a huge family"

**Volunteer, Bedfordshire**

**Are you interested to find out more?**

**Get in touch:**

caroline@overroad.co.uk

<https://www.girlguiding.org.uk/get-involved/become-a-volunteer>

Rainbow, Brownie and Guide units in the area are recruiting volunteers.



**You're amazing → Pass it on**

# PARISH & COUNTY NEWS

## News From Your DC Sue Ellington

Hello All Swavesey Residents

I am very concerned that this may be the last Meridian. It is so important for the village to report community clubs and events as well as inform residents about progress with village issues, and raise concerns. Not everybody is online, but every household has copy of the Meridian and can check bin days, local tradesmen and upcoming events. If I can do anything to help maintain this valuable village treasure please let me know.

I think we are all aware that the Government sees the growth of Greater Cambridge as key to the growth of the country. As a result it has proposed the creation of a Greater Cambridge Development Corporation to help speed up the growth process. I am concerned that businessmen will be appointed by the Government to form the management board of the Corporation and will be given sweeping powers over planning, transport, and infrastructure; away from the elected and accountable local councils. I will be fighting to ensure that local people do not lose their democratic powers to determine how the area grows.

South Cambs District Council had already indicated they would hold the elections in May 26, but it will only be for a two year period as it develops into a Unitary Authority by combining with the County Council in 2028. As yet, the Government has not indicated which, if any, other District(s) will be included in our new Authority.

I hope this is not the last Meridian but whatever happens please contact me if I can help you with any issues 07774146331 or [cllr.ellington@scambs.gov.uk](mailto:cllr.ellington@scambs.gov.uk)

Best wishes  
Cllr Sue Ellington  
Swavesey Ward

# SWAVESEY PARISH

## Parish Council News January/February 2026

### No increase in Parish Precept for 2026/27

At the January meeting the Parish Council set its Precept at £104,892 for the 2026/27 financial year. This being the level of funding required to carry out the functions and services of the Parish Council. This equates to keeping the Parish portion of the Council Tax at the same level as the current year 2025/26, ie no increase. For the fourth year running the Parish Council has kept to a Band D level of £95.27/year (£7.94/mth).

### County and District Precept increases 2026/27

Cambs County Council has increased its portion of the Council Tax by 4.99%, which equates to a Band D level increase of £84.78/yr. Giving an average Band D charge of £1,785.64 per year.

South Cambs District Council proposes to increase the district element of the Council Tax by £5.24 per annum, giving an average Band D Council Tax of £180.64 per year.

### County Council Business

Highways maintenance continues with various roads having had repairs carried out over the past two months. All highways defects can be reported by anyone via the County Council's online 'Report It' form linked to Cambridgeshire County Council's website (<https://www.cambridgeshire.gov.uk/top-tasks/report>).

### Traffic Calming Projects

- CCC has approved the proposals and implementation of the two speed reduction projects which were consulted on during December/January. The schemes for a 20mph limit through the village (although not including Boxworth End) plus speed reduction measures for Boxworth End and Ramper Rd were approved on 25<sup>th</sup> February. The full details can be viewed on the decision page of the [CCC Website](#). There is also a link on the Traffic Calming pages of the Swavesey Parish Council website: [www.swavesey-pc.gov.uk](http://www.swavesey-pc.gov.uk) It is expected these two schemes will be installed during spring/summer of this year.
- The PC has now purchased three solar MVAS (speed monitor) units, for installation permanently in the Boxworth End area
- Two solar MVAS units will also be installed along Over Rd as part of the LHI funded project.
- Speedwatch. More volunteers are required. Please contact us if you would like to help: [clerk@swavesey-pc.gov.uk](mailto:clerk@swavesey-pc.gov.uk)

The PC continues to liaise with our County Councillor to discuss all the outstanding issues. A monthly report from Cllr Chris Poulton is also published on our website at <https://www.swavesey-pc.gov.uk/the-council/county-district-councillors/>.

### Mobile Phone Signal

The Parish Council has for the past 18 months or so, been discussing with Connecting Cambridgeshire (CCC) and a signal tower company, as to how the mobile phone signal could be improved around the village. This progresses with a potential new mast site being investigated.

# COUNCIL NEWS

### District Council

The PC recently returned comments on several major consultations around future planning decisions including the Gtr Cambridge Draft Local Plan; proposed logistics development sites; MHCLG proposals for a Development Corporation for Gtr Cambridge; Gtr Cambridge Planning CIL infrastructure Levy draft charging schedule.

Also on the next stages of the Local Government Reorganisation proposals.

### 70-home housing development site

The Parish Council continues to liaise with the contractor, CCC Highways and Planning Officers regarding the impact of these works during construction on the village. During February highway safety issues escalated with HGVs queued up along Boxworth End during school start times. Hill acted and hopefully this has now eased. A tarmac entrance road has also been put into the development site so that the delivery lorries can gain access and wait inside the site. Contractor vehicle parking is now also available inside the site. Updates will be published on the Parish Council website as the project progresses.

### Village Maintenance & Projects

March 8<sup>th</sup> is a National Day of Reflection commemorating the Covid19 Pandemic. A blossom tree, donated by South Cambs District Council, was planted on Market Street Green as part of the commemorations.

### Admin

Frere Cottages Charity – the PC has nominated two new trustees to this charity.

Policy reviews – a few statutory policies which the PC must have in place were reviewed.

The PC also pledged to sign up to the Civility & Respect Pledge for Local Government.

### Elections May 2026

This May the Parish Cllr term of office ends and nominations will be taken for the next four-year term. The nomination period opens on 30<sup>th</sup> March and closes on 9<sup>th</sup> April at 4pm. Those wishing to stand as a candidate for the Parish Council election will need to complete a nomination form which goes back to the Electoral Office at South Cambs District Council. If anyone would like further information on what is involved in becoming a Parish Councillor please do contact the Clerk. General information can also be found on the Parish Council's website (<https://www.swavesey-pc.gov.uk/the-council/how-to-become-a-parish-councillor/>).

### Great British Spring Clean!

On Sunday 22<sup>nd</sup> March, Swavesey Litterpicker Group organised a community litterpick around the village. This is the third year this has taken place with, again, excellent support from residents.

Further details on everything that is discussed at the Parish Council meetings can be found in the Minutes and on the Council's website at [www.swavesey-pc.gov.uk](http://www.swavesey-pc.gov.uk)

**Swavesey Annual Parish Meeting  
Weds 15<sup>th</sup> April 2026  
7.30pm, Swavesey Memorial Hall**

Your opportunity to hear reports from and ask questions of the Parish Council, its committees, village charities, other village organisations and your County and District Councillors on items over the past year and for the forthcoming year. Please do come along to the meeting to learn more about your village

**Swavesey Parish Council**

<b>Swavesey Parish Council Website: swavesey-pc.gov.uk</b>		
<b>Parish Councillors</b>	<b>Telephone (01954)</b>	<b>E-mail address</b>
Doug Hunt (Chairman)	232478	<a href="mailto:dhunt@swavesey-pc.gov.uk">dhunt@swavesey-pc.gov.uk</a>
Colin Parsons (Vice-Chair)	610357	<a href="mailto:cparsons@swavesey-pc.gov.uk">cparsons@swavesey-pc.gov.uk</a>
Lisa Boyes	07747 002296	<a href="mailto:lboyes@swavesey-pc.gov.uk">lboyes@swavesey-pc.gov.uk</a>
James Dodson	230560	<a href="mailto:jdodson@swavesey-pc.gov.uk">jdodson@swavesey-pc.gov.uk</a>
Martin Johnston	200605	<a href="mailto:mjohnston@swavesey-pc.gov.uk">mjohnston@swavesey-pc.gov.uk</a>
Warren Wright	203172	<a href="mailto:wwright@swavesey-pc.gov.uk">wwright@swavesey-pc.gov.uk</a>
Jonathan Kerley	231304	<a href="mailto:jkerley@swavesey-pc.gov.uk">jkerley@swavesey-pc.gov.uk</a>
Rachel Vollerthun	07312 102526	<a href="mailto:rvollerthun@swavesey-pc.gov.uk">rvollerthun@swavesey-pc.gov.uk</a>
Sue Ellington	202923 / 07774 146331	<a href="mailto:sellington@swavesey-pc.gov.uk">sellington@swavesey-pc.gov.uk</a>
Sue Rogers	0777 224 7673	<a href="mailto:srogers@swavesey-pc.gov.uk">srogers@swavesey-pc.gov.uk</a>
Paul Twinn	01954 488578	<a href="mailto:ptwinn@swavesey-pc.gov.uk">ptwinn@swavesey-pc.gov.uk</a>
<b>Clerk:</b> Linda Miller	202982 / 07458 302193	<a href="mailto:clerk@swavesey-pc.gov.uk">clerk@swavesey-pc.gov.uk</a>
<b>District Councillor:</b> Sue Ellington	07774 146331	<a href="mailto:cldr.ellington@scamb.gov.uk">cldr.ellington@scamb.gov.uk</a>
<b>County Councillor:</b> Chris Poulton Papworth & Swavesey Ward	<a href="mailto:Chris.Poulton@cambridgeshire.gov.uk">Chris.Poulton@cambridgeshire.gov.uk</a> <a href="https://www.cambridgeshire.gov.uk/council/county-councillors">https://www.cambridgeshire.gov.uk/council/county-councillors</a>	
<b>Memorial Hall Administrator:</b> Nicole Mullee	07963 861791	<a href="mailto:memorialhall@swavesey.org.uk">memorialhall@swavesey.org.uk</a>
Swavesey Parish Council meets on the 2nd Thursday of each month for Planning items and on the 4th Monday of each month for Full Council. All meetings are held in the Memorial Hall at 7.30pm. There is always a 10 minute public forum at the start of the meeting.		

**Sacred Heart Roman Catholic Church  
St. Ives, Cambridgeshire  
PE27 5JT**

**THE SACRED PASCHAL TRIDUUM SERVICES**

	<b><u>MAUNDY THURSDAY – 2<sup>nd</sup> APRIL 2026</u></b> <b>MASS OF THE LORD’S SUPPER</b> <i>Watch at the Altar of repose till 12:00 midnight</i>	7pm
	<b><u>GOOD FRIDAY – 3<sup>rd</sup> APRIL 2026</u></b> <b>THE CELEBRATION OF THE PASSION OF THE LORD</b> <i>STATIONS OF THE CROSS AT 7PM</i>	3pm
	<b><u>EASTER VIGIL - SATURDAY 4<sup>th</sup> APRIL</u></b> <b>THE EASTER VIGIL IN THE HOLY NIGHT</b>	8pm

**EASTER SUNDAY – 5<sup>th</sup> APRIL 2026**

**EASTER DAY SUNDAY 5<sup>th</sup>  
APRIL 2026**

**NORMAL MASSES  
9 AM & 11 AM.**

**SACRED HEART RC PARISH HALL**

**AVAILABLE FOR HIRE**

Sacred Heart St Ives  
19 Needingworth Rd, St. Ives,  
Cambridgeshire, PE27 5JT

Suitable for Community Groups,  
Conferences & Meetings,  
Coffee mornings, Classes & Parties.

Our parish hall is now available to rent  
at £20 an hour An additional fee of £25  
will be applied for use of the kitchen.  
Guest WiFi available

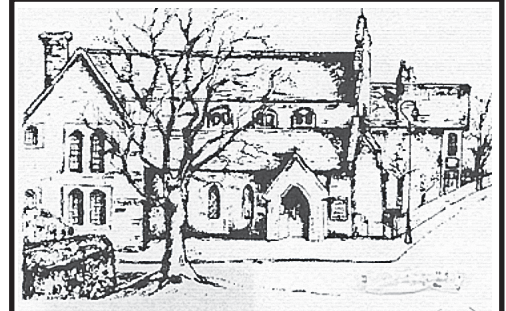
Please enquiry on tel.:  
(+44) 1480 462 192

e- mail:

[office@sacredheart-stives.org.uk](mailto:office@sacredheart-stives.org.uk)

Website:

[www.sacredheart-stives.org.uk/the-church-hall](http://www.sacredheart-stives.org.uk/the-church-hall)



**SACRED HEART OF JESUS**  
**Roman-Catholic Parish**  
19 Needingworth Road, St Ives, Cambs. PE27 5JT

**Priest in Charge: Fr Trindade J Monteiro**

Tel: 01480 462 192  
[www.sacredheart-stives.org.uk](http://www.sacredheart-stives.org.uk)  
email: [office@sacredheart-stives.org.uk](mailto:office@sacredheart-stives.org.uk)

Mass Times:  
Saturday 17.00 (Anticipatory)  
Sunday 09.00 and 11.00



## St Andrew's Church

### Services at St Andrew's

Please join us for worship at 11am on any Sunday morning including, on the fourth Sunday of the month, our All Together Worship Service. At 8pm on the first Thursday of every month, we have fifteen minutes of silence and prayer followed by Compline remembering the people of Ukraine and other countries affected by war. If there is a fifth Sunday in the month, you may find us worshipping in any of our four benefice churches.



### Easter Services:

There will be a range of services during Holy Week:

March 29<sup>th</sup>: Palm Sunday: 11am: Holy Communion

April 2<sup>nd</sup>: Maundy Thursday: 7:30pm: Holy Communion

April 3<sup>rd</sup>: Good Friday: 3pm: Poetry and meditations on the Stations of the Cross

April 5<sup>th</sup>: Easter Sunday:

6:30am - 7:30am: Easter Dawn Service (details to be confirmed)

11am: Holy Communion

You can find information about all our services and events on Facebook and online at A Church near You: <https://www.achurchnearyou.com/church/2834/service-and-events/events-all/>

### Ministry Team



Rev'd Stephen Dove (Team Rector): [stephen@5folds.org.uk](mailto:stephen@5folds.org.uk)

Rev'd Ed Green (Team Vicar): [ed@5folds.org.uk](mailto:ed@5folds.org.uk)

Canon Jan Payne (Licensed Lay Minister): [jan@5folds.org.uk](mailto:jan@5folds.org.uk)

Colin Smith (Benefice Administrator): 01954 203459 -

[admin@5folds.org.uk](mailto:admin@5folds.org.uk)

Churchwardens: Jacqui Fuller: 01954 230774 and Bridget Lofts: 01954 231195

### Diddy Disciples Sunday School

This is our Sunday School for younger children. We sing songs, draw and make things and most of all, learn about Jesus. We meet every Sunday at the back of church. Do join us.



## St Andrew's Church



### Emmaus House Group



We are a small group of people who meet every other Wednesday morning on Zoom to learn more about God through studying the Bible. We choose our own subjects and ask lots of questions but don't always find the answers! More details from Nicky Carne: [nicky\\_carne@hotmail.com](mailto:nicky_carne@hotmail.com) or the churchwardens.

### Craft Group

Our group meets every other Wednesday to work together on group activities; have you seen our decorations on the carpark cross? You can bring your own craft activity to work on or just come to enjoy the company over a hot drink and cake. Details from Jacqui Fuller: [jacqui\\_fuller@hotmail.com](mailto:jacqui_fuller@hotmail.com)



Meet us at Swavesey's Community Café - Compass Café every third Thursday of the month, 10:30am - 12 noon.

Enjoy our wonderful cakes and coffee.

### Events at St Andrew's in 2026

Here are a few dates to put in your diaries:

Easter Fair with Easter Egg Tombola: Saturday, 28<sup>th</sup> March, 2.00 - 4.00 pm

Plant Sale - Saturday, 16<sup>th</sup> May 10.00 am

Teddy Bear Zip Wire - Saturday, 27<sup>th</sup> June, 2.00 - 4.00 pm

Crafternoon - Saturday, 3<sup>rd</sup> October



*St Andrew's Plant Sale  
Saturday, May 16<sup>th</sup>  
10am*



*See social media for details*



### Club Vintage - Wednesdays 2-4pm

A warm welcome awaits older people and the club is dementia-friendly. There is a small £3 weekly charge. Enjoy a rotating variety of activities such as chair-based exercise, singing, bible-based crafts, quizzes, games and entertainment from others.



### Compass Café - Thursdays 10:30am-12pm



You will receive a very warm welcome at our community run cafe. Enjoy reasonably priced coffee, tea and homemade cakes.

### LITTLE LIGHTS - Fridays 10am-12pm

Baby & toddler group. All are welcome, bumps, babies, toddlers, parents and carers. Drop in at anytime for as long as you need. Only £2 per family, including drinks & snacks for all! We hope you can come along and join us!



### The Hub - Youth Group - Fridays 7-9pm



Open to all year 6 and secondary aged children. Come along and meet up with friends, chat, play games, listen to music and much more! Snack bar also available. £1 entry fee. Parents must complete a permission form.

### Sunday Services - Sundays 10:45am

You are warmly invited to join us for our weekly services followed by coffee in our compass room. Our services are open to all and are family friendly with children's Sunday School groups for all ages! Every first Sunday of the month is our alternative all age, café-style service which include refreshments around tables, conversation and maybe even some crafts! We have a special Communion service once a month on the 3rd Sunday. At Bethel we are brought together by our Faith, but what truly makes us family is our passion to serve God and love one another through every season.



## Easter is fast approaching and there is lots going on at Bethel Baptist Church:

**Good Friday Reflections** - 6:30pm Friday 3<sup>rd</sup> April @ Bethel Baptist Church.

**Sunrise Service** - 6:00am Sunday 5th April @ Fen Drayton Lakes (Jetty opposite the RSPB car park).

**All-age Easter Service** - 10.45am Sunday 5th April @ Bethel Baptist Church

---

### Upcoming events for your diaries:

## An Evening of Music & Testimony

7:00pm Friday 24<sup>th</sup> April @ Bethel Baptist Church - Come along to an all-age concert as we host a visiting group of singers and musicians.

## Comberton Gospel Choir

7:00pm Saturday 27<sup>th</sup> June @ Bethel Baptist Church - Comberton Gospel Choir are returning for an exciting evening of Gospel music.

### CONTACT US

Pastor Bob - [pastorbob@bethelbaptistchurch.org.uk](mailto:pastorbob@bethelbaptistchurch.org.uk)

Sue Hope (Secretary) - [secretary@bethelbaptistchurch.org.uk](mailto:secretary@bethelbaptistchurch.org.uk)

Charlotte Holmár (Administrator) - [admin@bethelbaptistchurch.org.uk](mailto:admin@bethelbaptistchurch.org.uk)

[www.bethelbaptistchurch.org.uk](http://www.bethelbaptistchurch.org.uk)

[www.facebook.co.uk/SwaveseyBethel](https://www.facebook.co.uk/SwaveseyBethel)

## Spring is on the way

As the evenings are beginning to get lighter and the cold wet weather begins to fade from our memory, it's time to start getting outside and looking for nature's cues that spring is on the way. It is possibly the most popular season as we all look for the riot of colour in the gardens around us, the birds treat us with their morning song; we hear the buzzing of bees and get the first glimpse of a butterfly.

Spring is also great time to do some spring cleaning, a time to get back in the shed and take a fresh look so that we can get out of the rut of the winter routine. The energy that spring inspires in us energises us to get creative, so it's also a good time to maybe visit a museum or gallery, or admire your favourite view, have a go at a new creative craft, or even write some poetry.

This season of spring creates in us a sense of renewal and new hope with all the promise of a fresh start, maybe even a clean slate and potential transformation in our life and circumstances. For me, the change of the seasons is a sign that we are a part of something that is far greater than ourselves, and it is humbling to consider that we are participants in the created order. Spring then, is more than the evidence of new life all around us, the brighter fresher days and the sounds of busyness. It is a time to reflect on our routines, our focus and our purpose in life. It is a time to consider whether we are givers or takers.

The kettle is on, come on let's have a chat about it.

Pastor Bob Adams

Bethel Baptist Church.

### **CHIROPODIST/ PODIATRIST**

I can offer a professional service

For further details please ring

**01954 201256**

**07494 196065**

Biomechanical assessments &  
orthotic therapy also available.

*Michelle Dolan*

*HCPC Registered Chiropodist/Podiatrist  
CH34864*

*e-mail: michelledolan@outlook.com*

## Community Groups & Charities

Swavesey Sustainability Hub	The Sustainability Hub is a community group that offers space and support for people to realise their ideas for a more sustainable way of life. Contact: <a href="mailto:rvollerthun@gmail.com">rvollerthun@gmail.com</a> Website: <a href="http://www.thesustainabilityhub.biz">www.thesustainabilityhub.biz</a>
Sheddit!	Sheddit! is the community shed for Swavesey and surrounding areas. The group works on a range of projects and welcome new members who enjoy making things from wood and metal. Contact: Phil Cohen 07957 422292 Website: <a href="https://shareborrowconnect.org/">https://shareborrowconnect.org/</a>
Cam Sight	Cam Sight is a local charity which offers support to anyone with a visual impairment, along with their family and carers. We meet on the 4th Wednesday afternoon of each month in Bar Hill. For more information please telephone Joan in Bar Hill on 01954 200622 or Alison at Cam Sight on 01223 420033 or email <a href="mailto:alison@camsight.org.uk">alison@camsight.org.uk</a> . For more info see:- <a href="http://www.camsight.org.uk">www.camsight.org.uk</a>
Cambridgeshire Hearing Help	CHH is a charity that helps people with hearing loss. Volunteers service NHS hearing aids and provide batteries and they attend Swavesey quarterly at Thistle Green. Advice on any aspects of hearing loss is available at a hearing help session or by calling the office on 01223 416141, E-mail: <a href="mailto:enquiries@cambridgeshirehearinghelp.org.uk">enquiries@cambridgeshirehearinghelp.org.uk</a> Website: <a href="http://cambridgeshirehearinghelp.org.uk">cambridgeshirehearinghelp.org.uk</a>
Care Network	Care Network supports volunteers, encourages independence and develops good neighbour projects. We provide the Welcome Home from Hospital service across Cambridgeshire. Contact:- Care Network, 5 Broadway House, 149-151 St Neots Rd, Hardwick, Cambridge, CB23 7QJ (tel: 01954 211919). Website: <a href="http://care-network.org.uk/">care-network.org.uk/</a>
Compass Cafe	Meets every Thursday morning from 10.30 until 12.00 at Bethel Baptist Church. Contact Sue Ellington on 01954 202923 or <a href="mailto:sue.ellington@virgin.net">sue.ellington@virgin.net</a>
Dog Lovers of Swavesey	Dog Lovers of Swavesey is a friendly group where anyone with a love for dogs is welcome with or without dog. Meetings are on the Recreation Green organised through the Facebook group at <a href="https://www.facebook.com/groups/dogloversofswavesey">https://www.facebook.com/groups/dogloversofswavesey</a> where we also exchange tips, ask for advice or have a laugh. Resources are gathered at <a href="https://dogloversofswavesey.co.uk/">https://dogloversofswavesey.co.uk/</a> . Contact: Matt at <a href="mailto:matthewyoung1@btinternet.com">matthewyoung1@btinternet.com</a> or Anita at <a href="mailto:anita.faul@outlook.com">anita.faul@outlook.com</a> Tel 01954 232791
Swavesey Library	A volunteer run community library based in Swavesey Village College. We are able to providing a full range of library facilities being directly linked to the Cambridgeshire County Council library service. For more info see:- <a href="https://www.swavesey-pc.gov.uk/community/swavesey-your-library/">https://www.swavesey-pc.gov.uk/community/swavesey-your-library/</a>
East Anglia's Children's Hospice (EACH)	Put your free time to good use and volunteer at East Anglia's Children's Hospice (EACH) in Milton. Volunteering at a children's hospice doesn't always mean care work and fundraising as there are also tasks such as admin and maintenance of the grounds. Contact:- Clare Bates on 01223 815134, Email: <a href="mailto:clare.bates@each.org.uk">clare.bates@each.org.uk</a>
OWLS Community Car Scheme	Run by DBS checked volunteers the scheme offers a door-to-door service, for medical or some social journeys, to people who are unable to access other forms of transport. Ring 07505 254363 to book a journey, find out more, or to volunteer as a driver Website: <a href="https://www.swavesey-pc.gov.uk/community/owls-community-car-scheme/">https://www.swavesey-pc.gov.uk/community/owls-community-car-scheme/</a>

# CLUB INFORMATION

Army Cadets UK	Swavesey Detachment, No 2 (Cromwell) Company, Cambridgeshire Army Cadet Force meets each Tuesday evening at the Swavesey Village College from 7 pm. New recruits are welcomed from ages 12 years (year 8) to 18 years. <a href="http://www.armycadets.com/county/cambridgeshire-acf/">www.armycadets.com/county/cambridgeshire-acf/</a>																		
Swavesey Five-a-Side Football Club	Currently seeking new members for this long-established club. We play each Wednesday evening from 6:30 to 7:30pm in the new sports hall at Swavesey Village College. Enquiries to Stewart Smith (07803 050234).																		
Swavesey Girlguiding	<table border="1"> <thead> <tr> <th>Unit</th> <th>Evening</th> <th>Contact</th> </tr> </thead> <tbody> <tr> <td>1st Swavesey Rainbows</td> <td>Thursdays</td> <td><a href="mailto:caroline@overroad.co.uk">caroline@overroad.co.uk</a></td> </tr> <tr> <td>1st Swavesey Brownies</td> <td>Mondays</td> <td><a href="mailto:swaveseybrownies@outlook.com">swaveseybrownies@outlook.com</a></td> </tr> <tr> <td>2nd Swavesey Brownies</td> <td>Wednesdays</td> <td><a href="mailto:secondswaveseybrownies@outlook.com">secondswaveseybrownies@outlook.com</a></td> </tr> <tr> <td>1st Swavesey Guides</td> <td>Thursdays</td> <td><a href="mailto:swaveseyguides@gmail.com">swaveseyguides@gmail.com</a></td> </tr> <tr> <td>1st Swavesey Rangers</td> <td>Thursdays</td> <td><a href="mailto:swaveseyrangers@gmail.com">swaveseyrangers@gmail.com</a></td> </tr> </tbody> </table>	Unit	Evening	Contact	1st Swavesey Rainbows	Thursdays	<a href="mailto:caroline@overroad.co.uk">caroline@overroad.co.uk</a>	1st Swavesey Brownies	Mondays	<a href="mailto:swaveseybrownies@outlook.com">swaveseybrownies@outlook.com</a>	2nd Swavesey Brownies	Wednesdays	<a href="mailto:secondswaveseybrownies@outlook.com">secondswaveseybrownies@outlook.com</a>	1st Swavesey Guides	Thursdays	<a href="mailto:swaveseyguides@gmail.com">swaveseyguides@gmail.com</a>	1st Swavesey Rangers	Thursdays	<a href="mailto:swaveseyrangers@gmail.com">swaveseyrangers@gmail.com</a>
	Unit	Evening	Contact																
	1st Swavesey Rainbows	Thursdays	<a href="mailto:caroline@overroad.co.uk">caroline@overroad.co.uk</a>																
	1st Swavesey Brownies	Mondays	<a href="mailto:swaveseybrownies@outlook.com">swaveseybrownies@outlook.com</a>																
	2nd Swavesey Brownies	Wednesdays	<a href="mailto:secondswaveseybrownies@outlook.com">secondswaveseybrownies@outlook.com</a>																
1st Swavesey Guides	Thursdays	<a href="mailto:swaveseyguides@gmail.com">swaveseyguides@gmail.com</a>																	
1st Swavesey Rangers	Thursdays	<a href="mailto:swaveseyrangers@gmail.com">swaveseyrangers@gmail.com</a>																	
Swavesey Spartans	Swavesey Spartans ( <a href="http://swaveseyspartans.co.uk">swaveseyspartans.co.uk</a> ) is a Chartered Standard Football Club affiliated to Cambridgeshire Football Association. The club delivers football for children aged 6 and above. The club helps with the transition to open age football. Colts football ceases at the end of a player's Under 18 season. Open age football for men in Swavesey is available through Swavesey Institute FC (separate entry in this section of the Meridian). Swavesey Spartans FC have an open age football team for ladies playing league games on a Sunday. For more information about Spartans please contact Paul Clarke ( <a href="mailto:swavesey.chairperson@gmail.com">swavesey.chairperson@gmail.com</a> ) or Mrs Paula Land ( <a href="mailto:swavesey.secretary@gmail.com">swavesey.secretary@gmail.com</a> )																		
1st Swavesey Scout Group	All sections meet at the Scout Hut on the SVC site																		
	<b>Beavers</b> Day: Thursday 18:00 to 19:00 Contact: John Pawson - Beaver Leader <a href="mailto:john.pawson@1stswaveseyscoutgroup.org.uk">john.pawson@1stswaveseyscoutgroup.org.uk</a>																		
	<b>Cubs</b> Day: Tuesday 18:15 to 19:30 Contact: Steven Wilson - Cub Leader <a href="mailto:steven.wilson@1stswaveseyscoutgroup.org.uk">steven.wilson@1stswaveseyscoutgroup.org.uk</a>																		
Swavesey Early Years and Playwork Centre	<b>Scouts</b> Day: Wednesday 19:00 to 20:30 Contact : Marian Bentley - Scout Leader <a href="mailto:Marian.Bentley@1stswaveseyscoutgroup.org.uk">Marian.Bentley@1stswaveseyscoutgroup.org.uk</a> For any other enquiries please email <a href="mailto:info@1stswaveseyscoutgroup.org.uk">info@1stswaveseyscoutgroup.org.uk</a>																		
	Swavesey Early Years and Playwork Centre are based in their own purpose-built unit on the primary school site. It comprises Early Years children (aged from 2 years and 6 Months) between 9am and 3pm (formerly Swavesey Pre School) and we provide activities and care for primary school aged children before and after school. Breakfast Club runs from 7.30 am to 9am and After School Club from 3.15pm to 6pm. For information please contact Carol Panther (Early Years and Playwork Manager) by email: <a href="mailto:eyandp@swavesey.cambs.sch.uk">eyandp@swavesey.cambs.sch.uk</a> or by phone (01954) 273312 Ext 2 or 07803 812221.																		
Swavesey Community Choir	If you enjoy singing and having fun then come and join Swavesey Community Choir. We meet every Wednesday evening in term time at Fenstanton Church Centre, School Lane, Fenstanton from 7.30pm - 9pm. You don't need to be able to read music and no auditions needed, tenor and bass voices particularly welcome. For further details contact Julie Holmes <a href="mailto:julieholmes78@gmail.com">julieholmes78@gmail.com</a> Website: <a href="http://www.swaveseycommunitychoir.co.uk">www.swaveseycommunitychoir.co.uk</a>																		

British Tang Soo Do Institute	British Tang Soo Do Institute practices the Korean martial art of Tang Soo Do. Our club training covers self defence techniques and many aspects of fitness including flexibility, coordination, conditioning, balance and discipline helping to promote a healthy lifestyle. For further information please contact Master Jeff Cockram on 07863 345681 or <a href="mailto:jeff@btsdi.co.uk">jeff@btsdi.co.uk</a> Or see our website: <a href="http://www.btsdi.com">www.btsdi.com</a>
Swavesey Tang Soo Do Club	Swavesey Tang Soo Do have classes on a Monday, Tuesday and Wednesday. Classes are in the primary school main hall at 6pm. The contact details are Master Louise Morton on 07919 050261 or email <a href="mailto:enquiries@swaveseytsd.co.uk">enquiries@swaveseytsd.co.uk</a> . The website is <a href="http://www.swaveseytsd.co.uk">www.swaveseytsd.co.uk</a>
Allotments in Swavesey	Down Hale Road towards the windmill and on the right there are 61 plots, mostly 150 sq yds (125 m2) in area, backed up by eight water tanks. Large yields of a wide range of high quality vegetable, fruit and flower crops can be grown successfully. If you are interested in joining the waiting list contact Val Sage Tel (01954) 230853
British Legion	For information contact:- Secretary - Angela Dye. (01954) 277453. email: <a href="mailto:dyeangela0@gmail.com">dyeangela0@gmail.com</a>
Swavesey Badminton Club	Located at the Swavesey Village College Sports Centre. The Club offers a high standard of play at club nights on Tuesdays 7pm to 8pm and on Fridays from 6.30pm to 9.30pm. We play competitive badminton in the Cambridge leagues and run men's, women's and mixed teams. Contact Helen Taylor on (01954) 230997 Email: <a href="mailto:enquiries@swaveseybadminton.net">enquiries@swaveseybadminton.net</a> Website: <a href="http://www.swaveseybadminton.net">www.swaveseybadminton.net</a>
Swavesey Billiards and Snooker Club	For information/membership please contact Graeme Waites (01954 230113) Email <a href="mailto:graham.waites566@btinternet.com">graham.waites566@btinternet.com</a>
Swavesey Camera Club	At Swavesey Camera Club we are proud to cater for photographers of all standards. For more information visit our website at: <a href="http://www.swaveseycameraclub.co.uk">www.swaveseycameraclub.co.uk</a> . We meet every Thursday, 7.00 - 9.30pm. 'Carole Shaw Room, SVC. Non-members welcome - £4 charge (first visit free). For further details please ring Simon Shore (01954) 230848
Swavesey Squash Club	Swavesey Squash Club has three international standard squash courts, in our recently refurbished clubhouse, on the Swavesey Village College site. The club has a number of weekly sessions running, suitable for beginners, improvers, and more advanced players. Unlimited use of the facility from £17 a month. A welcoming and active community club with social events and opportunities for competition. Visit our website for more details or contact Ali Loke on 07776 176866/ <a href="mailto:ali@alilokesquash.com">ali@alilokesquash.com</a> . <a href="http://www.swaveseysquash.com">www.swaveseysquash.com</a>
Swavesey & Over Cycling Club	We meet regularly throughout the year, with rides most weekends and also weekdays on spring and summer evenings. As a Cycling UK affiliated club our goal is to explore a joint passion for cycling in a safe, inclusive and social way. We aim to organise events throughout the year from day & weekend rides in the UK and long weekend trips in Europe. Contact: John Craven Email: <a href="mailto:socccommittee@gmail.com">socccommittee@gmail.com</a> Facebook: <a href="https://bit.ly/3GJCKsZ">https://bit.ly/3GJCKsZ</a> SOCC or Website: <a href="https://swaveseyovercc.wixsite.com/soccc">https://swaveseyovercc.wixsite.com/soccc</a>

Fireflies Netball Club	Friendly local club, everyone welcome, from back-to-netballers to seasoned players. We have teams playing in CDNL and Fenland Netball leagues. Training is on Tuesdays 7-8:30pm at Northstowe Secondary School. First month is free. £15 per month thereafter. Contact <a href="mailto:firefliesnetballclub@gmail.com">firefliesnetballclub@gmail.com</a> for more information.
Over & Willingham Cricket Club	We have 2 open age (adult) cricket teams in the Cambridgeshire Saturday afternoon league playing 40 over cricket between the start of May and the end of August. If you are interested in joining our club, please get in touch with one of the club officials, come along to one of our training sessions or approach any club member on our matchdays (Saturday's). Contact Jane Reeson if you are interested. email - <a href="mailto:reesonhcx46k@aol.com">reesonhcx46k@aol.com</a> ; Telephone 07768 540146; or Facebook - Over and Willingham CC, or Website - <a href="http://overandwillingham.play-cricket.com">overandwillingham.play-cricket.com</a>
Swavesey Music School	Meets every Saturday of term time at Swavesey Village College. For further details see: <a href="http://www.swaveseymusic.co.uk/">www.swaveseymusic.co.uk/</a>
Swavesey District Bridleway Association	A liaison group representing local horse riders whose main aim is to protect existing and create safe new horse riding links between all local villages. New members welcome. Regular Newsletter/ Social events calendar. Please contact Sue Rogers (01954) 232758
Swavesey & District History Society	Meet every third Tuesday in the month, 7.30pm, Carole Shaw room, SVC. Contact Carolyn Redmayne, Secretary (01954) 230037
Swavesey Institute Football Club	Swavesey Institute FC have 2 teams in the Cambs County Saturday afternoon leagues. For information about the club or if you are interested in playing open age (adult) football for the village please contact Martin Pickering on 07737 391445
Linedance	Linedance classes held on Wednesday mornings at the Bethel Baptist Church 9-30 to 11-30 am. Beginners always welcome. Contact Deborah Walker (01954) 231382 Email: <a href="mailto:deborahwalker105@talktalk.net">deborahwalker105@talktalk.net</a>
Swavesey & Over Conservation Society	At the moment we organise interesting walks If you need a lift: Phone: Trevor Grange - 01954 230119 or Pat Miles - (01954) 780485. Guests Are Always Welcome!
Swavesey & Over Tennis Club	Swavesey & Over Tennis Club: Club nights are Mondays and Fridays, 6.30-8.30pm. We welcome new members - further information our website <a href="https://swaveseyovertennis.wixsite.com/sotc">https://swaveseyovertennis.wixsite.com/sotc</a> , or you can email us on <a href="mailto:SwaveseyOverTennis@gmail.com">SwaveseyOverTennis@gmail.com</a> , or call Steve 07393 825027 or Melanie 07453 523999.
Swavesey RADsOc	Friendly local drama group staging two or three productions a year. New members always welcome. Contact: Nathalie Balzano: <a href="mailto:nathaliewoodward@hotmail.com">nathaliewoodward@hotmail.com</a> Visit our website at <a href="http://www.swaveseyradsoc.org.uk">www.swaveseyradsoc.org.uk</a>
Swavesey W.I.	We meet every second Monday of the month at 7.30pm in the Memorial Hall. New members are always welcome to enjoy a variety of invited speakers and have a chat and cup of tea/coffee afterwards. For further information contact Margaret Guest tel (01954) 202757
Women's Walking	Women's Walking on Mondays and Fridays at 10:00am. Meet on Market Street green. Walk for approximately one hour on pathways in and around Swavesey. A chance to exercise and chat. - Reasonably robust footwear recommended. All welcome.

# THE MERIDIAN ADVERTISER

## April/May 2026

### Landscaping & Garden Services

Grower & Supplier of Trees, Shrubs & Hedges

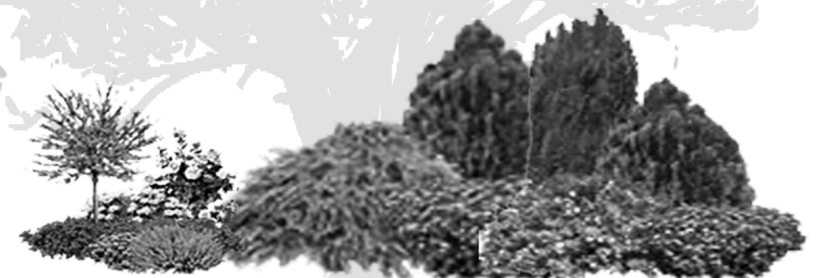


- ✧ Supply and or planting of trees, shrubs and hedges
- ✧ Cutting / Pruning of trees, shrubs and hedges.
- ✧ Land Preparation, spraying, lawn seeding and turfing
- ✧ General maintenance, clearance and repairs
- ✧ Fencing, Gates and Paving

For a FREE estimate phone :- 07786699977

or visit [www.eparish-landscaping.co.uk](http://www.eparish-landscaping.co.uk)

or Email : [edwin@parishnet.co.uk](mailto:edwin@parishnet.co.uk)



# PAIN AND INJURY CLINIC



Live life pain-free, naturally!  
Start your journey back to better health.

#### WHAT WE TREAT.

- Back Pain
- Neck Pain
- Pelvis and Hip Pain
- Headaches
- Sciatica
- Postural Problems
- Jaw Pain
- Sports Injuries
- Shoulder Injuries
- Pain during Pregnancy
- Muscle Spasms
- Mobility Issues

CHIROPRACTIC CARE | SOFT TISSUE THERAPY | REHABILITATION

[www.movefreechiropractic.co.uk](http://www.movefreechiropractic.co.uk) [info@movefreechiropractic.co.uk](mailto:info@movefreechiropractic.co.uk)

91 High Street, Longstanton, Cambridgeshire, CB24 3BS 07405426244

Made with PosterMyWall.com

Contact for  
**FREE**  
to find out if  
chiropractic is  
right for you.

# RPJ SOLUTIONS

## PAINTING SOLUTIONS

### INTERIOR AND EXTERIOR

CALL TODAY FOR MORE INFORMATION  
AND TO ARRANGE A FREE QUOTE!

 RPJ Solutions

Phone: 07794 732097

Email: [ryan@rpjsolutions.co.uk](mailto:ryan@rpjsolutions.co.uk)

Web: [www.rpjsolutions.co.uk](http://www.rpjsolutions.co.uk)

# C & C BLINDS

Specialists in Blinds | Any size | Any colour



Vertical Blinds • Roller Blinds  
Venetian Blinds • Repairs • Roman • Pleated  
Perfect Fit • Wooden • Roof Blinds  
Awnings • Fitting Service

Free Estimates & 1 Year Guarantee

**10% OFF**  
With this leaflet

Tel: 01223 211 171 • Mob: 07761 262070

Email: [colincoleman64@hotmail.com](mailto:colincoleman64@hotmail.com)

# ALEX ARTHURS

## BUILDING SERVICES

ALL ASPECTS OF BRICKWORK UNDERTAKEN

EXTENSIONS • TRADITIONAL BRICKWORK • ALTERATIONS  
GARDEN WALLS • CHIMNEY REBUILDING • REPOINTING  
FIREPLACES • STONE SILLS AND THRESHOLDS

PAVING • SLABS & NATURAL STONE • BLOCK PAVING  
CONCRETING • GROUNDWORKS • FENCING • DECKING

FOR A FREE QUOTATION & ADVICE CALL ALEX ARTHURS

**01954 232050 or 07841 433652**



**wilderspin**  
GARAGE LTD

*A local family-run business*

**MOTOR  
HOME SERVICING -  
MOT'S & HABITATION CHECKS  
ALL DONE ON SITE**



## SERVICING & REPAIRS

EXHAUSTS | BATTERIES | TYRES | CLUTCHES | BRAKES | TIMING BELTS

## M.O.T. TESTING CENTRE

CLASSES 4,5 & 7 | MOTOR HOMES | MINI BUSES  
CARS | VANS | LIGHT COMMERCIAL

**FREE**  
USE OF  
COURTESY CARS

**AIR  
CONDITIONING  
SERVICING**

**FREE**  
COLLECTION AND  
DELIVERY SERVICE



OAKTREE ROAD | FEN DRAYTON | CB24 4SS  
Tel: 01954 230273 | Email: wilderspingarageltd@gmail.com  
[www.wilderspin-garage.co.uk](http://www.wilderspin-garage.co.uk)



## **Rothwell's** Carpet Cleaning

**Carpet, Stone Floor,  
Upholstery & Rug Cleaning**

*A few points that make us stand out,*

Rothwell's has been in business since 1993  
We're an honest local family firm.

Our large truck mounted machines mean  
more cleaning & drying power  
for the best results possible.

Members of both the NCCA and TACCA.  
We will move the furniture.  
100% satisfaction or it's FREE.

*Call Oliver and Max Campbell  
for expert help today.*

**01223 832 928**

**[www.Rothwells.biz](http://www.Rothwells.biz)**

## Sales: Servicing Salt

**AQUASTREAM**  
Water Softeners limited

- Supply & Installation Service
- Servicing & Repairs
- Drinking Water Systems
- Salt Delivery & Collection

**01954 230898**



**[www.aquastream-softeners.co.uk](http://www.aquastream-softeners.co.uk)**

Unit 17 Meridian, Buckingway Business Park, Anderson Road, Swavesey, Cambridge, CB24 4AE

**Authorised  
Ecowater & Kineticco  
Dealership**





## Achieve the future you want

We all imagine our future differently.

Whatever your goals, we believe there is value in taking advice from someone you trust. We will work with you to plan, grow and protect your financial future.

Let's start a conversation.

**James Tait**  
BA (Hons) DipPFS  
Cert CII (MP & ER)  
Adviser

07768 305151  
james.tait@sjpg.co.uk

Associate Partner Practice

**St James's Place**

Willow Bay Financial Partners Ltd is an Appointed Representative of and represents only St. James's Place Wealth Management plc (which is authorised and regulated by the Financial Conduct Authority) for the purpose of advising solely on the group's wealth management products and services, more details of which are set out on the group's website [www.sjpg.co.uk/products](http://www.sjpg.co.uk/products). The 'St. James's Place Partnership' and the titles 'Partner' and 'Partner Practice' are marketing terms used to describe St. James's Place representatives.

SJP Approved 16/07/2025

S.P13570e\_05 B3 (10/24)



## Andy Tibbett & Sons Painting & Decorating



- \* All internal & external work carried out to a high standard
- \* Trade references can be supplied
- \* Very competitive pricing
- \* A prompt & polite service from a name you can trust



Telephone: 01954 230810

Mobile: 07717 493723

Email: [andrewtibbett@hotmail.co.uk](mailto:andrewtibbett@hotmail.co.uk)



# Ash Croft Veterinary Surgery

169 St. Neots Road,  
Hardwick, Cambridge CB23 7QJ  
Mon.–Fri. 8.30am –10.30am  
4.30pm–7.00pm  
Saturday 9.00am–11.00am  
Sunday 10.00am–11.00am  
Tel: 01954 210250

Unit 1 Pendrill Court, Ermine Street North  
Papworth Everard, Cambridge CB23 3UY  
Monday, Wednesday, Friday 11.30am–1.30pm  
Saturday 12noon–1.30pm  
Tel: 01480 831615

Laura Wood MA, VetMB, MRCVS  
Simon Shore MA, VETMB, MRCVS  
Dragan Tomovic BVSc, MRCVS  
Consultations by appointment only

## Swavesey Physio

**Chartered  
Physiotherapist**  
**Susannah Jennings BSc (Hons)**  
**MCSP, HCPC, MAACP**



### Musculo-Skeletal Injuries:

- Back & Neck Pain
- Muscle & Joint Pain
- Rehabilitation after Surgery
- Postural Conditions (including Post & Ante Natal)
- Mobility Difficulties

### Treatments Available:

- Joint Mobilisation & Manipulation
- Soft Tissue Massage and Stretching
- Acupuncture
- Mobility Assessments
- Electrotherapy
- 1:1 Clinical Pilates
- Rehabilitation Programs



31 Thistle Green, Swavesey, Cambridge. CB24 4RJ.  
Tel: 07970 548205

Email: [susie@swaveseyphysio.co.uk](mailto:susie@swaveseyphysio.co.uk)  
Web: [www.swaveseyphysio.co.uk](http://www.swaveseyphysio.co.uk)

# G B Builders

NO JOB TOO SMALL

## FOR ALL MAINTENANCE RENOVATIONS AND DIY WORK

All general building repairs & odd jobs  
Specialist in Painting & Decorating  
Groundwork & Grass cutting

- Fencing
- Brickwork & Plastering
- Plumbing
- Driveways, Paths, Patios
- Carpentry
- Slabbing
- Roofing
- Concreting
- Tiling
- Blockpaving
- Drainage
- Guttering

Call Today  
07877 742420  
Or 01480 437511  
g.builders@yahoo.co.uk

# La` Mac

Hairdressing for all  
the family



- ◆ Friendly Service
- ◆ Traditional & up to date styling
- ◆ Fully trained in all colouring techniques
- ◆ Open Tuesday - Saturday  
(late 7.00pm Wednesday)

We aim to make your visit as pleasant as possible, with a professional and friendly atmosphere to help you relax.

If you are thinking of a change please pop in - we will be pleased to help.

☎ 01954 231 445

2a Market Street Swavesey  
Cambridgeshire CB24 4QG

# F.W. COOK

## FUNERAL SERVICE

49 Church Street Willingham

Tel Willingham 260325

Andrew Cook Dip FD Kay Cook Dip FD MBIE

A long established family business providing a personal 24 hour service

Golden Charter pre-payment funeral plans available

## COOK'S MEMORIALS

New memorials and refurbishments  
Brochures available on request



### DDB Home Solutions Limited

Making your house a home

We are a company based in Needingworth specialising in kitchen and bathroom installations and can also supply the following services;

- Carpentry and Joinery
- Plumbing
- Electrical installation – Part P registered
- Floor and wall tiling
- Less-abled Bathrooms and Wet Rooms



We are a member of the Institute of Carpenters and also the Guild of Master Craftsmen with over twenty years experience

Visit our website for more information - [www.ddbhomesolutions.co.uk](http://www.ddbhomesolutions.co.uk)  
For an informal discussion or quote please contact Darren or Jo Turnbull  
Tel: 01480 495984, or email us at [Darren@ddbhomesolutions.co.uk](mailto:Darren@ddbhomesolutions.co.uk)



ELECSA  
Part of the ICA Group



# R.A. Denton

## Painting & Decorating

### High Quality



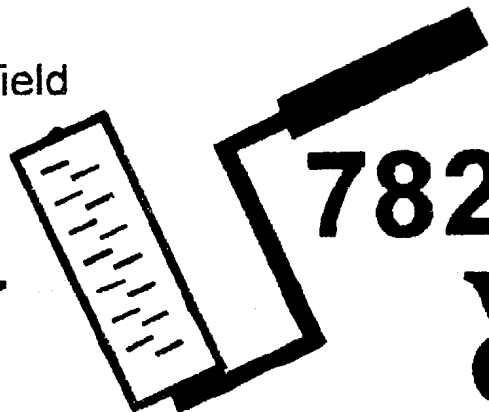
Industrial

Commercial

Domestic



102, Stonefield  
Bar Hill  
Cambridge  
CB3 8TB



# 782472



Struggling with Long Covid?  
Living with chronic pain?  
Can't get a good night's sleep?



Five Element Acupuncture

- diagnoses the root cause
- calms your nervous system
- relaxes tense muscles
- rebalances your body
- nourishes mind and spirit

Discover how working on your health with a fully qualified Five Element acupuncturist can transform your outlook.

Phone or email today for your FREE 20-minute consultation with Willingham acupuncturist Kaye Rooney  
Lic. Ac., B.A Hons. MBAcC  
kaye@kr-acupuncture.com



Find out more at  
kr-acupuncture.com

07593 058748



Carpet, Upholstery & Fine Rug  
Cleaning Service

&

Wood Floor Restoration

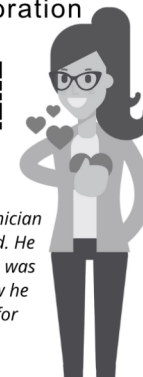
Call Today  
01223 790796  
or scan QRcode  
to message us:



Please quote:  
Swavesey Meridian Mag

"We were very satisfied with the technician and the way the carpets were cleaned. He was very polite and phoned to say he was coming and again later to let us know he would be with us shortly. Thank you for your services."

Mrs Burling



Art of Clean, Denny Lodge Business Park, Ely  
Road, CB25 9PH  
www.artofclean.co.uk

## LIGHT REMOVALS

Small Houses to Single Items

### ANY DISTANCE 7 Days a Week

### For a Free Quote

Telephone:

01480 352220

07711 556833

www.cambslightremovals.com

Contact us:  
david@rosegatefarm.co.uk  
07922 588171



Rose and Crown Road Road, Swavesey

Butchery Open Fridays (8.30 am - 5.30 pm) & Saturdays (8.30 am - 1.30 pm)

[www.rosegatefarm.co.uk](http://www.rosegatefarm.co.uk)

*Bespoke Butchering – butchered to suit your requirements*

**BEEF**

- Primarily from our own Hereford / Angus herd
- All at least 21-day aged

**PORK**

- Bred & reared here at Rosegate Farm.
- Home-made sausages, dry-cured bacon and gammons (smoked and unsmoked)
- Cooked Ham

**LAMB**

- Swavesey born and bred
- individual cuts, or ¼, ½ or whole lamb packs available

**CHICKEN (sourced from Diaper Poultry)**

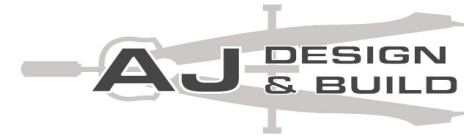
- Sutton Hoo Free Range
- St George Chicken

**BBQ Meats – Burgers – Kebabs – Glazes**

*See you in the butchery!*



# AJ Carpentry



**Local, family run business who thrive on transforming project dreams into a stunning reality!**

***Extensions – Conversions – New Builds – Groundworks – Bathrooms***

***Kitchens – Flooring – Electrical works – the list is endless!***

[www.ajcarpentry.co.uk](http://www.ajcarpentry.co.uk)

**07989 341724 / 07812 671495**

# YOUR COMPLETE

GAS, HEATING AND PLUMBING COMPANY

- PLUMBING
- HEATING
- GAS
- BATHROOMS
- WATER SOFTENERS
- PROPERTY MAINTENANCE



# M.B. FLACK

Interior & Exterior  
Painter & Decorator  
& Repairs

30+ Years Experience  
in the trade.

**Free Estimates**

Telephone  
**01954 231 915**

## Accountancy & Taxation Services



- Tax Returns
- Business Accounts
- Bookkeeping
- VAT Returns
- Payroll
- Audits

**L.A. Wells** FCCA CTA

Chartered Certified Accountant, Chartered Tax Advisor

4 Scorey  
Fenstanton  
Huntingdon  
Cambridgeshire  
PE28 9QG

Tel: 01480 466 197



[www.lwells.co.uk](http://www.lwells.co.uk)

## Stamp Chiropody & Podiatry

Casey Stamp MCPod BSc (Hons)

HCPC registered CH15068



- General chiropody - nails, hard skin & corns
- Diabetic foot care
- Children's Feet - Growing pains, Verrucas, etc.
- Sporty Feet & associated injuries + pains
- Ingrowing toe nails
- Custom made Orthotics/insoles
- Dancing feet - we'll keep you on your toes
- Biomechanics & Gait analysis

**New Clients Always Welcome**

**Find us at:**

1E Highgate Farm,  
Over Rd, Willingham,  
CB24 5EU

Tel: 07807 505534

[www.stamppodiatry.co.uk](http://www.stamppodiatry.co.uk)

## MAGAZINE ADVERTISING RATES

ADVERTISING RATES AS FROM FEBRUARY 2025

For a one year inclusion i.e. six issues.

Size	Advertiser	Magazine
Full page	£286	£379
Half page	£149	£214
Quarter page	£100	£132

The following rates are for one inclusion only and as a premium rate is already charged will be positioned in the magazine section:-

Half page one inclusion only £100

A small charge may be made for creating and amending artwork

For all advertising details please contact:

April Martin Tel: 01954 200533 or

Email: [adverts@swaveseymeridian.org.uk](mailto:adverts@swaveseymeridian.org.uk)

## Vintage travel your own pool

..holidays with added peace of mind.

Your Local  
Travel  
Company



Handpicked Villas with private pools.  
Over 30 years of creating perfect holidays.  
Book with confidence.



**Vintage**  
travel  
Handpicked villas with private pools

• Greece • Spain • Lanzarote • Balearics • Portugal • Turkey • France • Italy • Croatia • Cyprus

01954 261 431

[www.vintagetravel.co.uk](http://www.vintagetravel.co.uk)



Plumbing and heating supplies  
to the trade and public



We are a local independent company supplying  
all your plumbing & heating needs, including:

**Bathroom Taps • Boilers • Bathroom Suites  
Underfloor Heating • Central Heating Radiators  
Heated Towel Rails • Showers • Kitchen Taps  
Sinks • Baths • Sanitaryware  
Plastic Plumbing Systems • Fittings**

*Do not hesitate to ring, email or visit...*

Unit 10, Norman Way Industrial Estate, Over, Cambridge CB24 5QE.  
Tel: 01954 230268. E-mail: [info@dandtsupplies.co.uk](mailto:info@dandtsupplies.co.uk) [www.dandtsupplies.co.uk](http://www.dandtsupplies.co.uk)

## NOTIFICATION OF MAJOR EVENTS

Please use this form to notify us of any major events you are organising so that we can publish the dates in the magazine and on the website at [www.swaveseymeridian.org.uk](http://www.swaveseymeridian.org.uk)

It is hoped this will avoid major events clashing on the same day. Please send to the Editor, [editor@swaveseymeridian.org.uk](mailto:editor@swaveseymeridian.org.uk)

Event \_\_\_\_\_

Location \_\_\_\_\_ Date \_\_\_\_\_ Time \_\_\_\_\_

Contact Name \_\_\_\_\_ Tel No. \_\_\_\_\_

## BIRTHDAYS, ANNIVERSARIES & SPECIAL OCCASIONS

If you would like to mark any occasion that is special to you or somebody that you know by announcing it in this magazine, please fill in the form below.

Also supply your name and contact details, and return to the Editor by the copy date.

We will endeavour to include it in our next issue.

SHORT MESSAGE:

---



---



---

USEFUL TELEPHONE NUMBERS & WEBSITES		
Doctor's Surgery (Swavesey)	01954 230202	<a href="http://swaveseyurgery.nhs.uk/">swaveseyurgery.nhs.uk/</a>
Doctor's Surgery (Over)	01954 231550	<a href="http://oversurgery.nhs.uk/">oversurgery.nhs.uk/</a>
<b>Police:</b>		<a href="http://www.cambs.police.uk">www.cambs.police.uk</a>
Emergency	999	
All Non Emergency Calls	101	
Swavesey Parish Council	01954 202982	<a href="http://www.swavesey-pc.gov.uk">www.swavesey-pc.gov.uk</a>
Swavesey Pre-school Enquires	01954 273312 Ext 2	<a href="http://www.swavesey.cambs.sch.uk/page/?title=EY+%26amp%3B+P&amp;pid=59">www.swavesey.cambs.sch.uk/page/?title=EY+%26amp%3B+P&amp;pid=59</a>
Swavesey Primary School	01954 273312	<a href="http://www.swavesey.cambs.sch.uk/">www.swavesey.cambs.sch.uk/</a>
Swavesey Village College:	01954 230366	<a href="http://www.swaveseyvc.co.uk">www.swaveseyvc.co.uk</a>
Community Office	01954 234488	<a href="http://www.swaveseyvc.co.uk/community-education/">www.swaveseyvc.co.uk/community-education/</a>
Swavesey Post Office	01954 232311	
<b>Cambridgeshire County Council:</b>		<a href="http://www.cambridgeshire.gov.uk">www.cambridgeshire.gov.uk</a>
General Enquiries	0345 045 5200	
Library Service	0345 045 5225	<a href="http://www.cambridgeshire.gov.uk/residents/libraries-leisure-culture/libraries">www.cambridgeshire.gov.uk/residents/libraries-leisure-culture/libraries</a>
South Cambs District Council	01954 713000	<a href="http://www.scambs.gov.uk">www.scambs.gov.uk</a>
<b>Electricity (UK Power Networks):</b>		
Emergency & Power Cut Report Line	0800 783 8838	<a href="http://www.ukpowernetworks.co.uk">www.ukpowernetworks.co.uk</a>
Gas Emergencies (National Grid)	0800 111999	<a href="http://www.nationalgas.com/emergency-contacts">www.nationalgas.com/emergency-contacts</a>
Water (Cambridge Water Company) Leak:	0800 316 7676	<a href="http://www.cambridge-water.co.uk">www.cambridge-water.co.uk</a>
Sewage (Anglia Water) Emergency	03457 145 145	<a href="http://www.anglianwater.co.uk">www.anglianwater.co.uk</a>
Environment Agency (Flood Line):	0800 807060	<a href="http://www.environment-agency.gov.uk">www.environment-agency.gov.uk</a>
Samaritans	116 123	<a href="http://www.samaritans.org">www.samaritans.org</a>
Addenbrooke's Hospital:	01223 245151	<a href="http://www.addenbrookes.org.uk">www.addenbrookes.org.uk</a>
Hinchingbrooke Hospital	01480 416416	<a href="http://www.hinchingbrooke.nhs.uk">www.hinchingbrooke.nhs.uk</a>
NHS Direct	111	<a href="http://111.nhs.uk">111.nhs.uk</a>
<b>Airports + Road &amp; Rail:</b>		
Local Taxi: Alpha Cars	01954 232300	<a href="http://www.alphacarsonline.co.uk">www.alphacarsonline.co.uk</a>
Gatwick	0844 892 0322	<a href="http://www.gatwickairport.com">www.gatwickairport.com</a>
Heathrow	0844 335 1801	<a href="http://www.heathrow.com">www.heathrow.com</a>
Luton	01582 405100	<a href="http://www.london-luton.co.uk">www.london-luton.co.uk</a>
Stansted	0808 169 7031	<a href="http://www.stanstedairport.com">www.stanstedairport.com</a>
Traveline (Bus Coach & Rail)	0871 200 22 33	<a href="http://www.traveline.info">www.traveline.info</a>
<b>Local Timetables:</b>		
Cambridgeshire Bus Information		<a href="http://www.cambridgeshirebus.info">www.cambridgeshirebus.info</a>
Stagecoach	01223 433250 0345 241 8000	<a href="http://www.stagecoachbus.com">www.stagecoachbus.com</a>
National Express Coaches	03717 81 81 81	<a href="http://www.nationalexpress.com">www.nationalexpress.com</a>
Whippet Coaches	01954 230011	<a href="http://www.go-whippet.co.uk">www.go-whippet.co.uk</a>
National Rail	03457 48 49 50	<a href="http://www.nationalrail.co.uk">www.nationalrail.co.uk</a>
<b>Veterinary Practices:</b>		
Village Vet (Longstanton)	01954 780027	<a href="http://www.villagevet.co.uk">www.villagevet.co.uk</a>
Ash Croft (Hardwick)	01954 210250	<a href="http://www.ashcroftvet.co.uk">www.ashcroftvet.co.uk</a>
Vets For Pets (Bar Hill)	01223 243535	<a href="http://www.vets4pets.com/practices/vets-in-cambridge/vets4pets-cambridge-bar-hill/">www.vets4pets.com/practices/vets-in-cambridge/vets4pets-cambridge-bar-hill/</a>

#rufhsstives2026



# The BIGGEST FAMILY HISTORY SHOW in East Anglia!

Who do you think you are?  
Come along and find out!

DNA Talk with Donna Rutherford

Research Advice Panel with local experts



Burgess Hall, Westwood Rd, St Ives, PE27 6WU

18 APRIL 10AM-4.30PM

FREE Entry